

Cut/Fill Table				
Lower_value		Upper_value		Colour
-18	to	-16.5	1.5	
-16.5	to	-15	1.5	
-15	to	-13.5	1.5	
-13.5	to	-12	1.5	
-12	to	-10.5	1.5	
-10.5	to	-9	1.5	
-9	to	-7.5	1.5	
-7.5	to	-6	1.5	
-6	to	-4.5	1.5	
-4.5	to	-3	1.5	
-3	to	-1.5	1.5	
-1.5	to	0	1.5	
0	to	1.5	1.5	
1.5	to	3	1.5	
3	to	4.5	1.5	
4.5	to	6	1.5	
6	to	7.5	1.5	
7.5	to	9	1.5	
9	to	10.5	1.5	
10.5	to	12	1.5	

Total Excavation
Cut - 81,493m³
Fill - 3,028m³
*[If additional North Headland excavated
Total Cut - 84,783m³]*

Staged Excavation
Stage A
Cut - 33,860m³ / Fill - 3,001m³
stage B
Cut - 47,628m³ / Fill - 27m³

ISSUES / AMENDMENTS		
REV.	DESCRIPTION	DATE



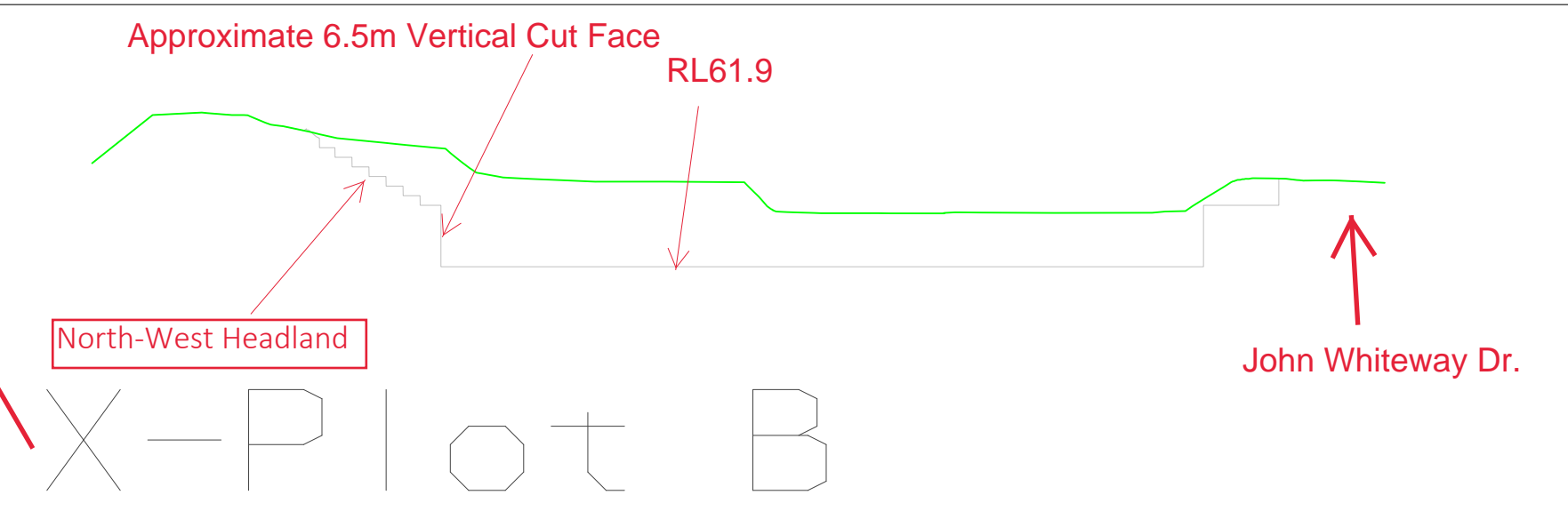
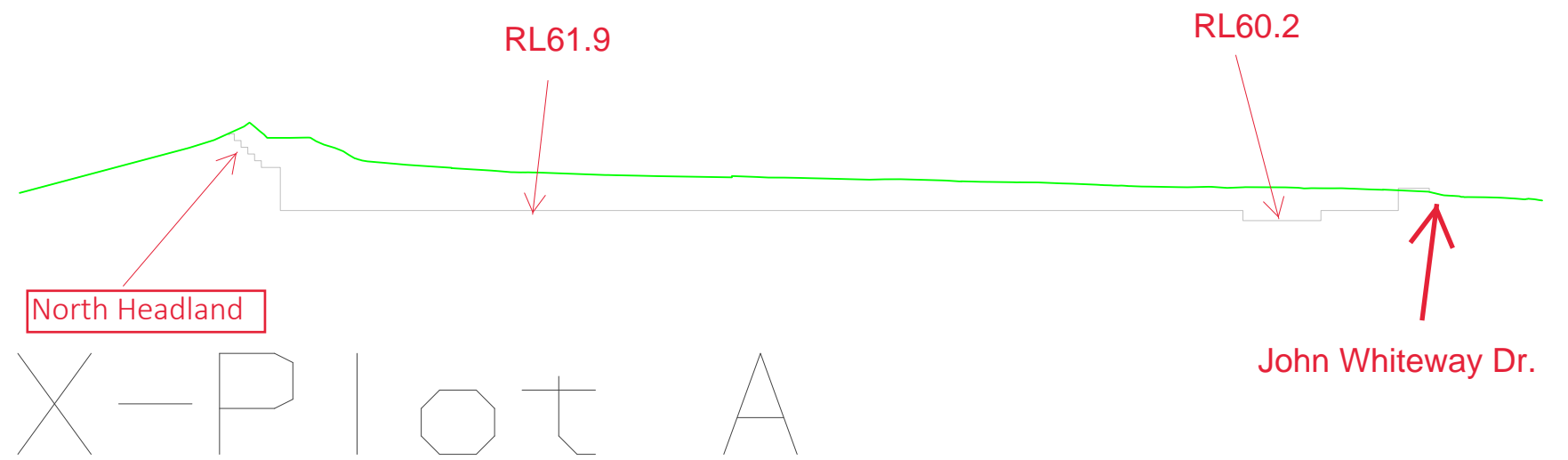
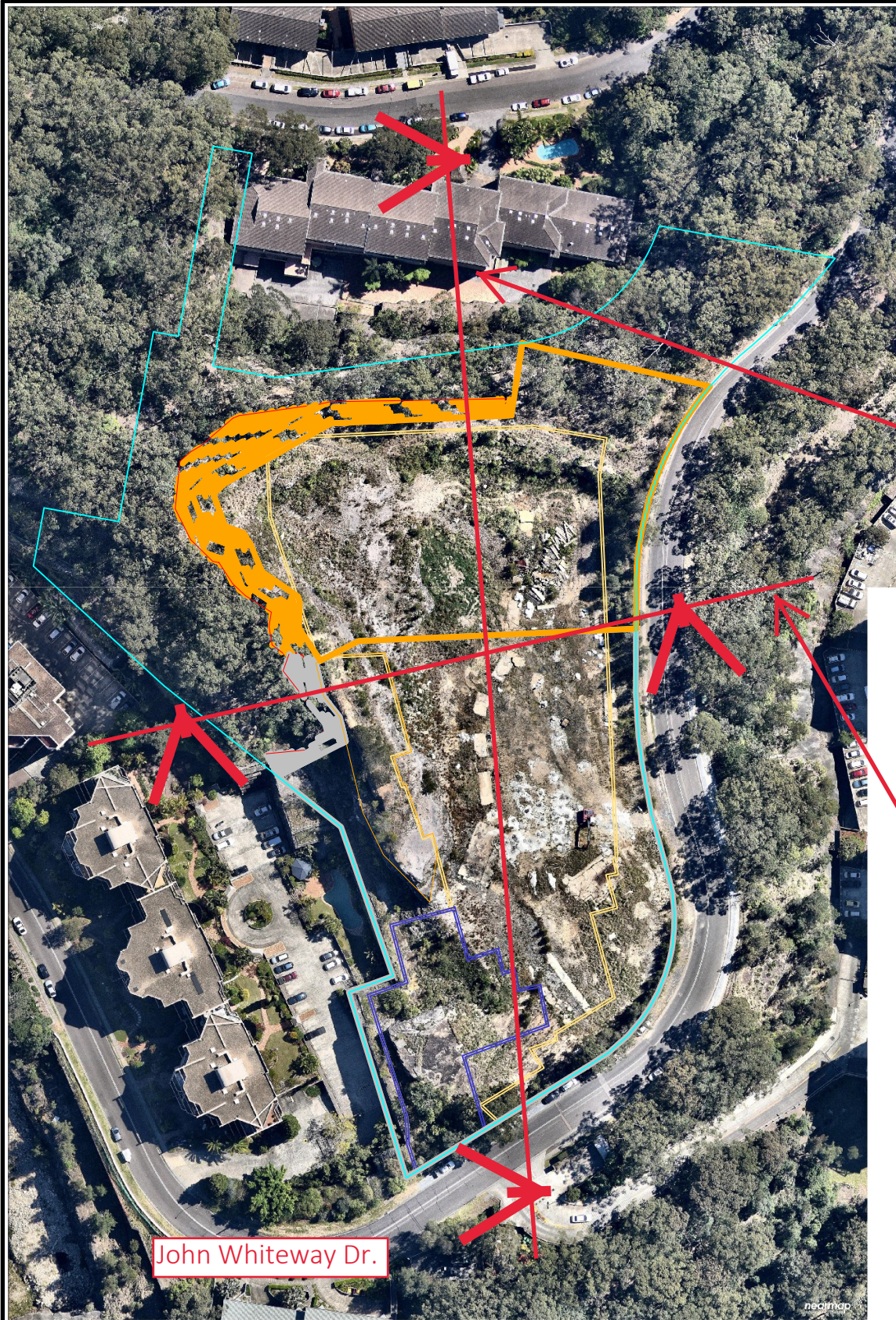
NOTES
This Cut/Fill Plan is a rough outlook.
Design Levels are not accurate.
Limited information provided.

DESIGNED / DRAWN RM	DATE 27/11/19
SURVEYED	DATE
SCALE 1 : -1	DATUM

CLIENT <i>ADG Architects</i>
PROJECT 87-89 John Whiteway Dr. Wyong

DRAWING TITLE Cut - Fill Plan 1.5m Inc.

CAD FILE N/A
PROJECT/JOB No. 2879-05
DRAWING No.



Notes:

1. Levels shown are Bulk Earthworks Levels and reflect Basement Slab thickness of 200mm.
2. Basement walls extended outwards by 600mm to allow for Retaining Wall system and subsoil drainage.

ISSUES / AMENDMENTS		
REV.	DESCRIPTION	DATE



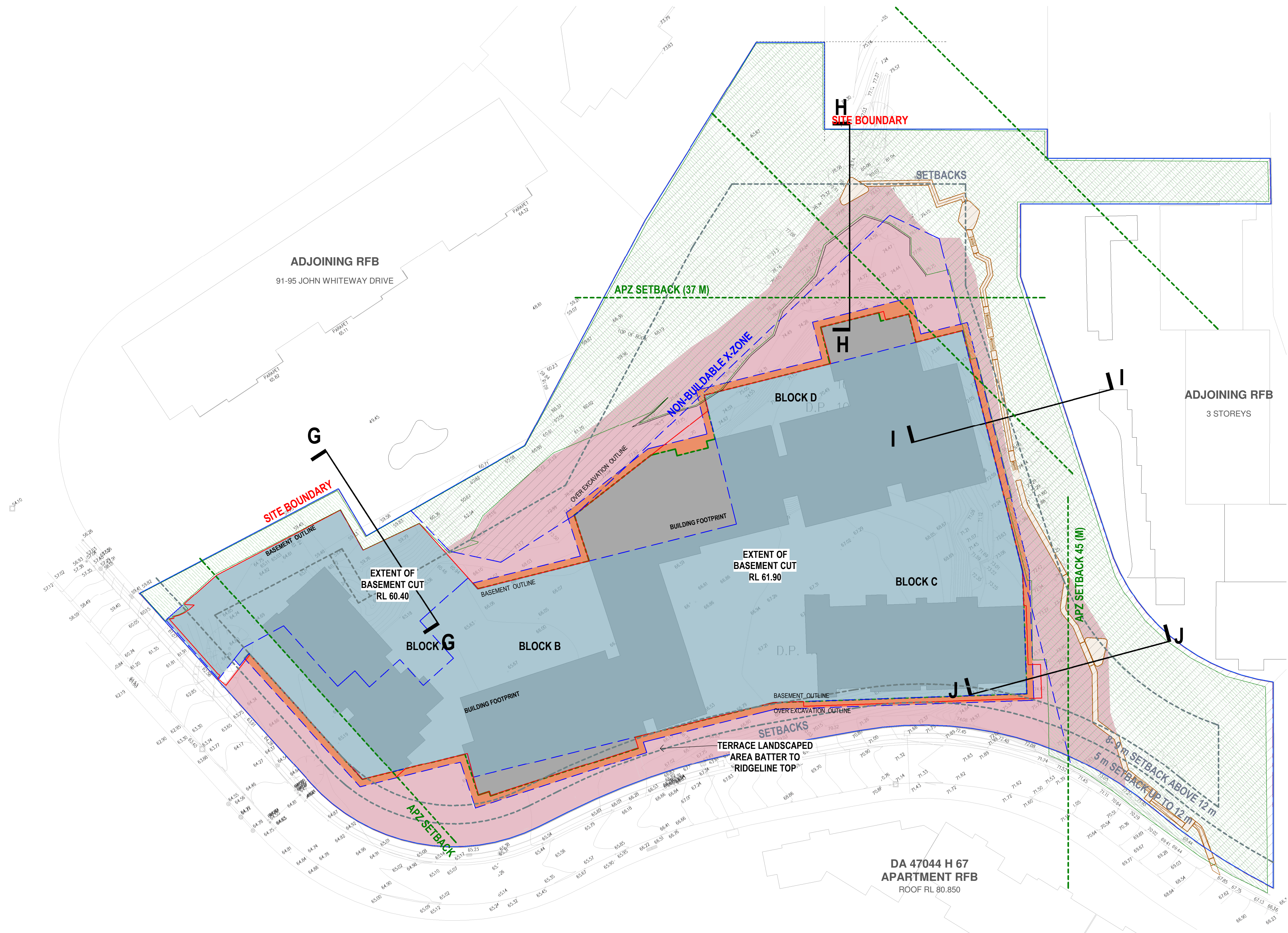
NOTES

This Cut/Fill Plan is a rough outlook.
Design Levels are not accurate.
Limited information provided.

DESIGNED / DRAWN RM	DATE 27/11/19
SURVEYED	DATE
SCALE 1 : -1	DATUM

CLIENT <i>ADG Architects</i>
PROJECT 87-89 John Whiteway Dr. Wyong

DRAWING TITLE Cut - Fill Plan 1.5m Inc.
CAD FILE N/A
PROJECT/JOB No. 2879-05
DRAWING No.



- KEY:
- EXTENT OF BATTER AREA
 - EXTENT OF BASEMENT CUT (RL 60.40 AND RL 61.90)
 - OVER EXCAVATION OUTLINE AREA
 - BUILDING FOOTPRINT ABOVE BASEMENT
 - NON-BUILDABLE ZONE
 - TOP EDGE OF QUARRY FACE (APPROX)
 - BASEMENT CUT OUTLINE AREA

- LEGEND:
- SITE BOUNDARY LINE
 - SETBACKS
 - APZ SETBACKS
 - NON-BUILDABLE AREA

1 CUT AND FILL DIAGRAM - IMPACT ANALYSIS PLAN
DA003.1 1:500

North

12	RFI SUBMISSION	26.07.21	JS	JS
11	RTS RESUBMISSION	27.05.21	JS	PL
10	SSD DA RESUBMISSION	19.03.21	JS	PL
9	SSD DA RESUBMISSION (DRAFT)	26.02.21	JS	PL
8	ISSUE FOR CONSULTANT	16.02.20	JS	PL
7	SSD DA RESUBMISSION	25.08.20	JS	PL
6	ISSUE FOR CONSULTANT/RESPONSE TO SUBMISSION (3rd)	16.07.20	JS	PL,SC
5	RESPONSE TO SUBMISSIONS (2nd)	14.07.20	JS	PL,SC
Rev.	Description	Date	Chk	Drw

ADGarchitects

Suite 3.04, Level 3, 107-109 Marn St, Gosford NSW 2250
Postal Address P.O. BOX 457 Gosford NSW 2250
ph: 02 4312 5110 fax: 02 4312 3113
e: info@adgarchitects.com.au



Client

JWD DEVELOPMENTS PTY LTD

Title

CUT AND FILL DIAGRAMS

Project

87 - 89 JOHN WHITEWAY DRIVE

Location

87 - 89 JOHN WHITEWAY DRIVE,
GOSFORD, NSW, 2250

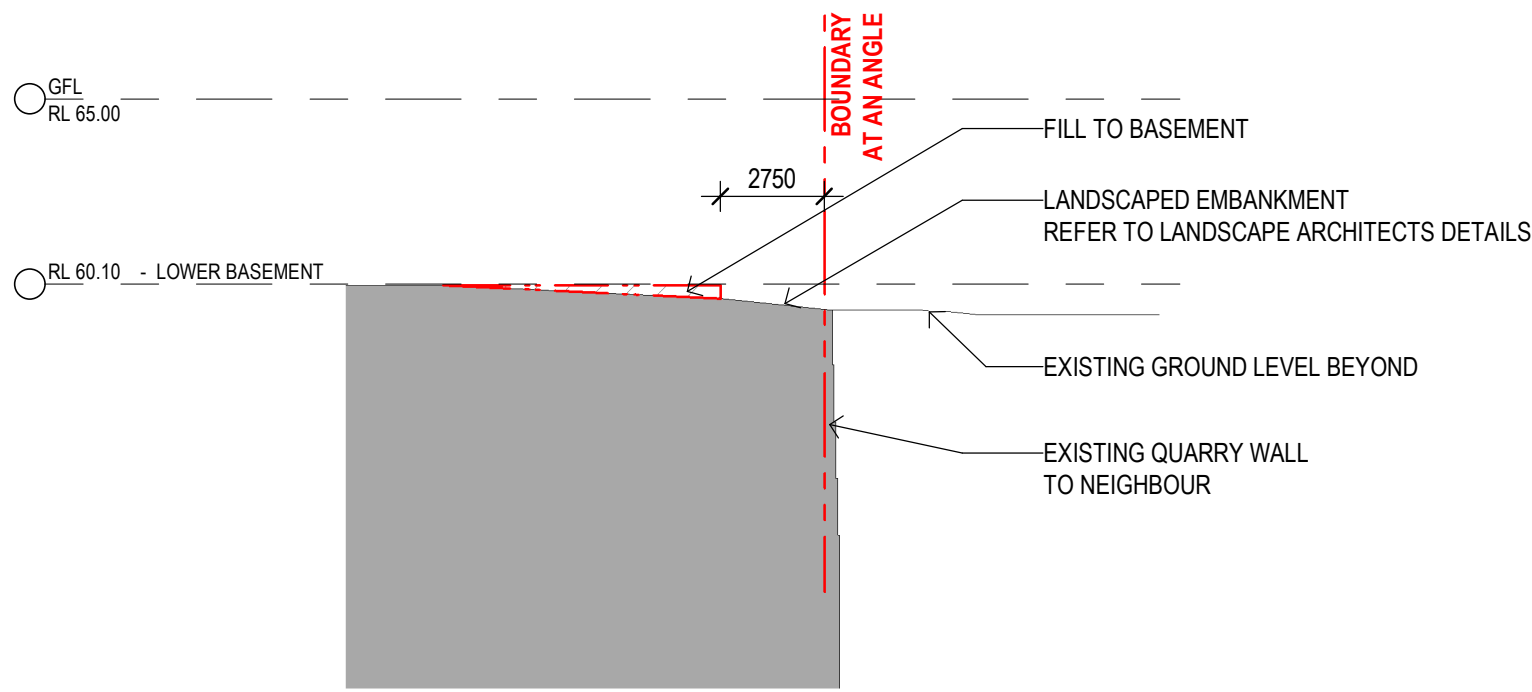
Do not scale drawings. Use figured dimensions only. Check and verify levels and dimensions on site prior to commencement of any work, the fabrication of shop drawings or the fabrication of components.

This drawing is the copyright of ADG Architects and is protected under the Copyright Act 1968. It may not be altered, reproduced or transmitted in any form or by any means without the express permission of ADG Architects.

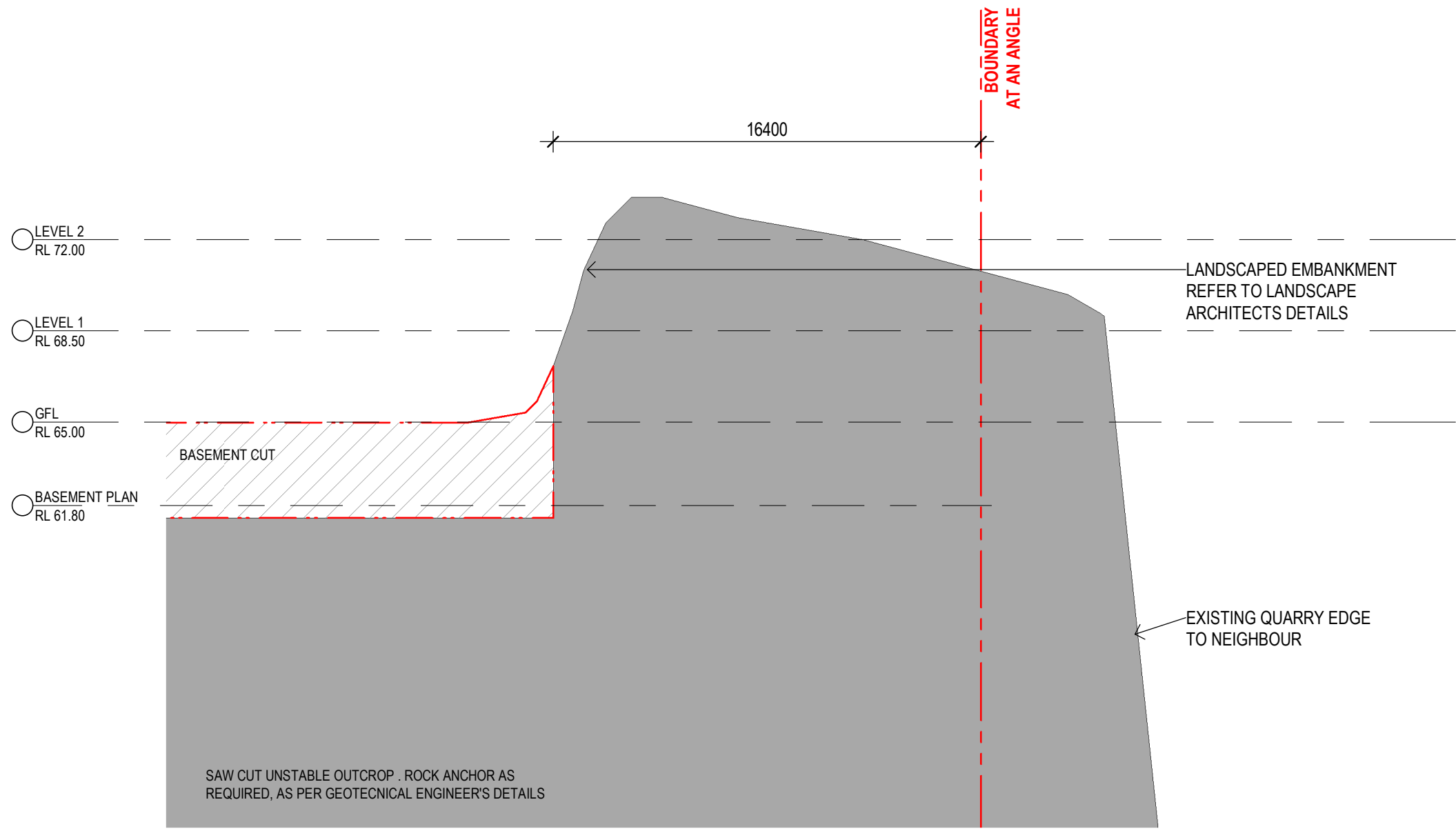
SSD DA SUBMISSION
NOT TO BE USED DURING CONSTRUCTION

Project Number	Drawing Number	Rev
19002	DA005.9	12
Coordinator : Approver	Checked : Checker	
Scale: As indicated @ A1	Date Printed: 2021-07-26 4:40:33 PM	
File Name:		

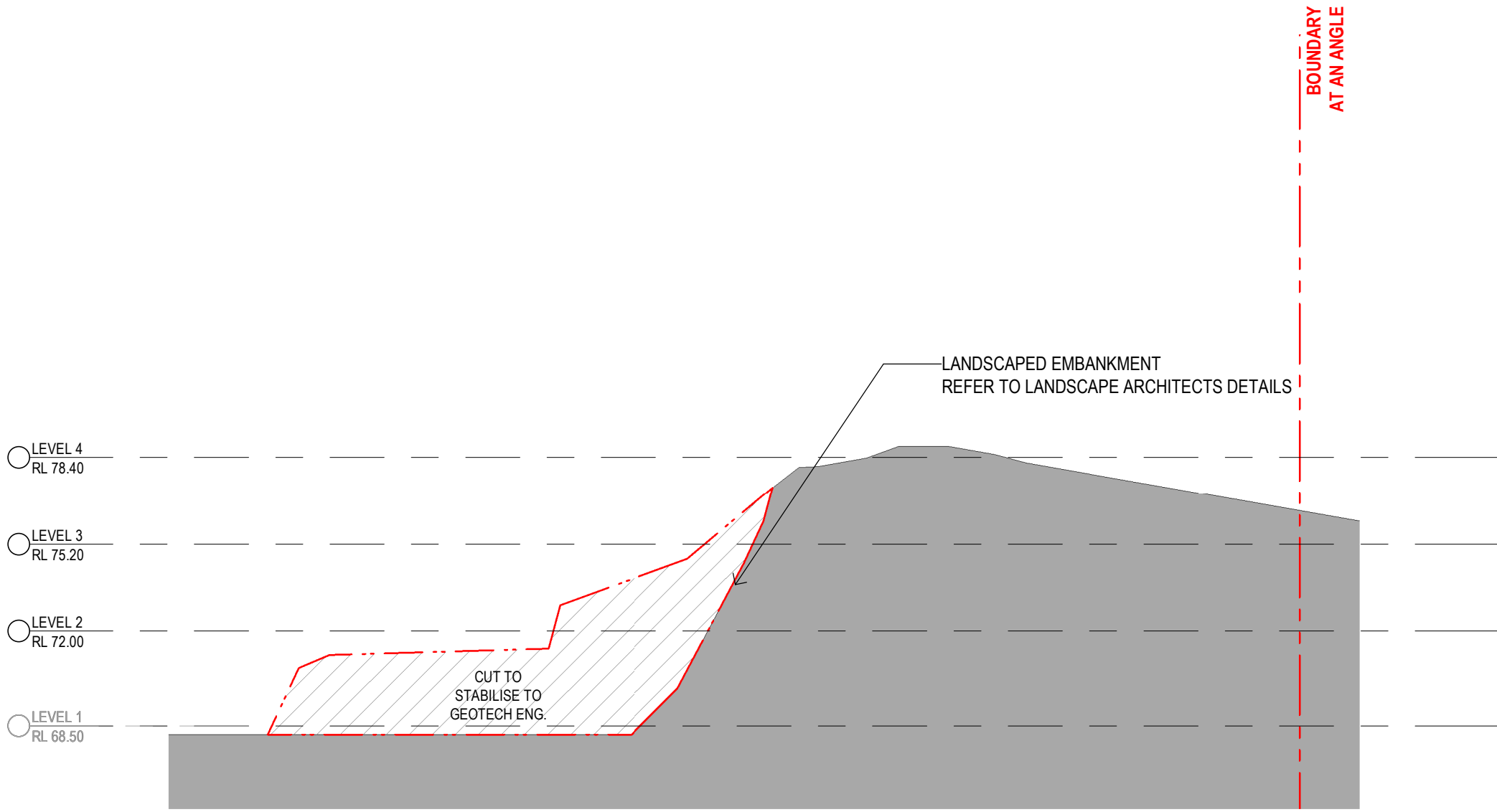
Printed From: C:\Users\johann@adg\OneDrive - ADG Architects\Desktop\ADG989_JWD989 John Whiteway Drive_DA_Central_details.dwg



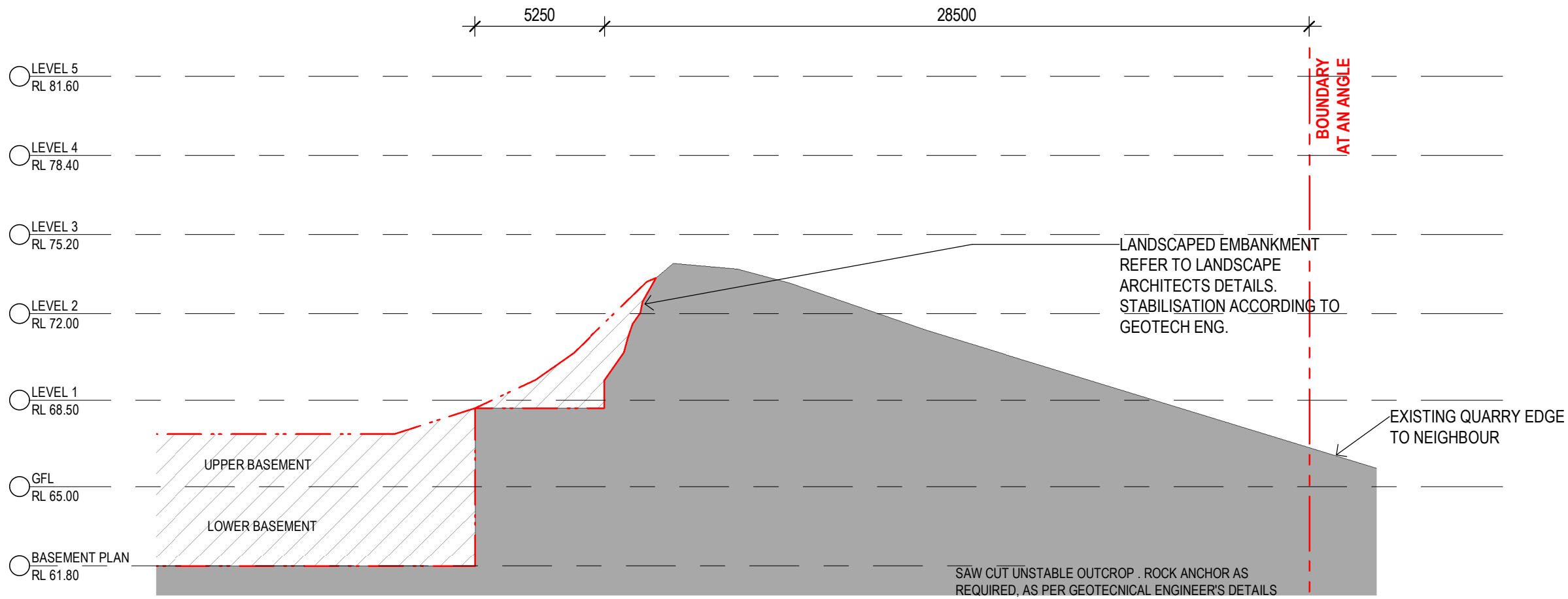
7 CUT AND FILL G-G
DA002.1 1:200



9 CUT AND FILL I-I
DA005.3 1:200



8 CUT AND FILL H-H
SK02 1:200



10 CUT AND FILL J-J
1:200

CUT
REFER TO GEOTECHNICAL
ENGINEER'S DETAILS

LANDSCAPED EMBANKMENT
REFER TO LANDSCAPE
ARCHITECTS DETAILS

NOTE: CUT & FILL IS INDICATIVE ONLY AND
HAS TO BE DETERMINED DURING
CONSTRUCTION ACCORDING TO
GEOTECHNICAL ENGINEER

Rev.	Description	Date	Chk	Drw
12	RFI SUBMISSION	26.07.21	JS	JS
11	RTS RESUBMISSION	27.05.21	JS	PL
10	SSD DA RESUBMISSION	19.03.21	JS	PL
9	SSD DA RESUBMISSION (DRAFT)	26.02.21	JS	PL
8	ISSUE FOR CONSULTANT	16.02.20	JS	PL
7	SSD DA RESUBMISSION	25.08.20	JS	PL
6	ISSUE FOR CONSULTANT/RESPONSE TO SUBMISSION (3rd)	16.07.20	JS	PL,SC
5	RESPONSE TO SUBMISSIONS (2nd)	14.07.20	JS	PL,SC

ADGarchitects

Suite 3.04, Level 3, 107-109 Mann St, Gosford NSW 2250
Postal Address P.O. BOX 457 Gosford NSW 2250
ph: 02 4312 5110 fax: 02 4312 3113
e: info@adgarchitects.com.au



Client
JWD DEVELOPMENTS PTY LTD

Title
CUT AND FILL DIAGRAMS

Project
87 - 89 JOHN WHITEWAY DRIVE

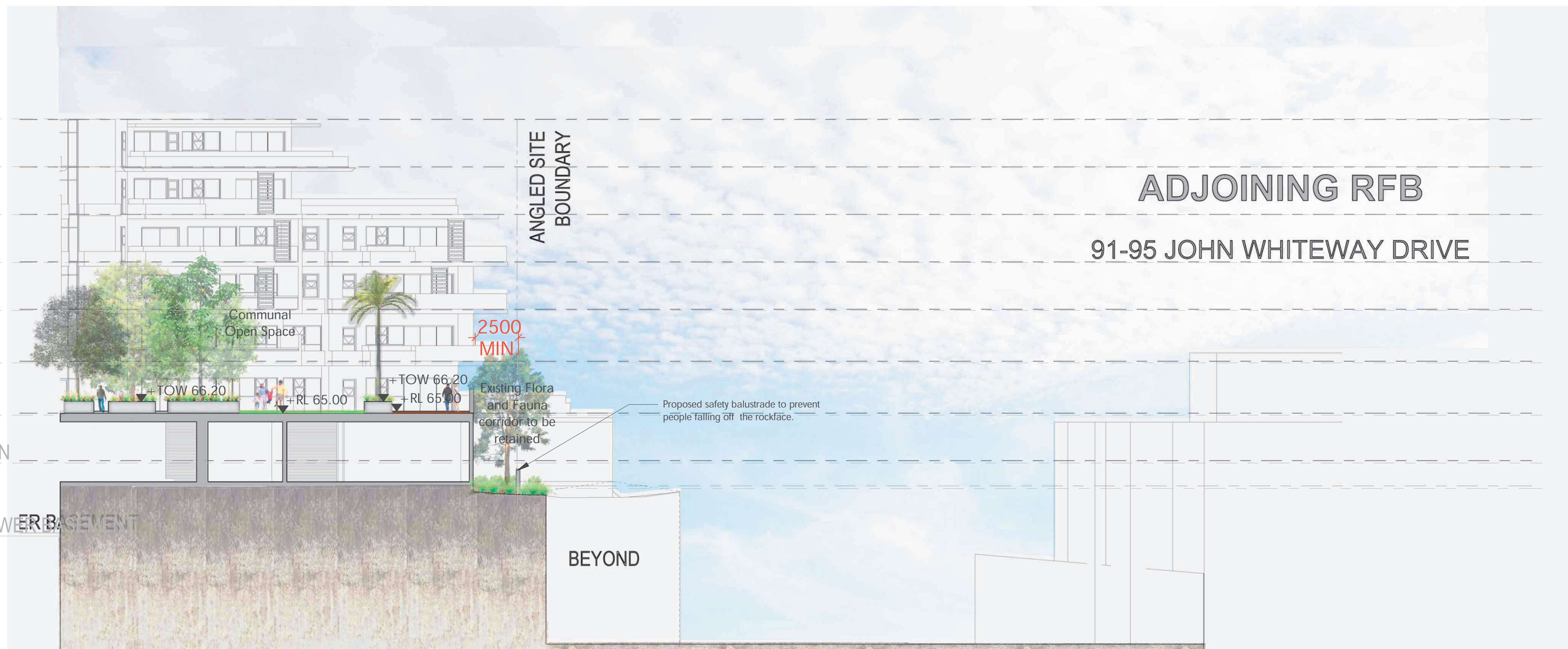
Location
**87 - 89 JOHN WHITEWAY DRIVE,
GOSFORD, NSW, 2250**

Do not scale drawings. Use figured dimensions only. Check and verify levels and dimensions on site prior to commencement of any work, the fabrication of shop drawings or the fabrication of components.
This drawing is the copyright of ADG Architects and is protected under the Copyright Act 1968. It may not be altered, reproduced or transmitted in any form or by any means without the express permission of ADG Architects.

SSD DA SUBMISSION
NOT TO BE USED DURING CONSTRUCTION

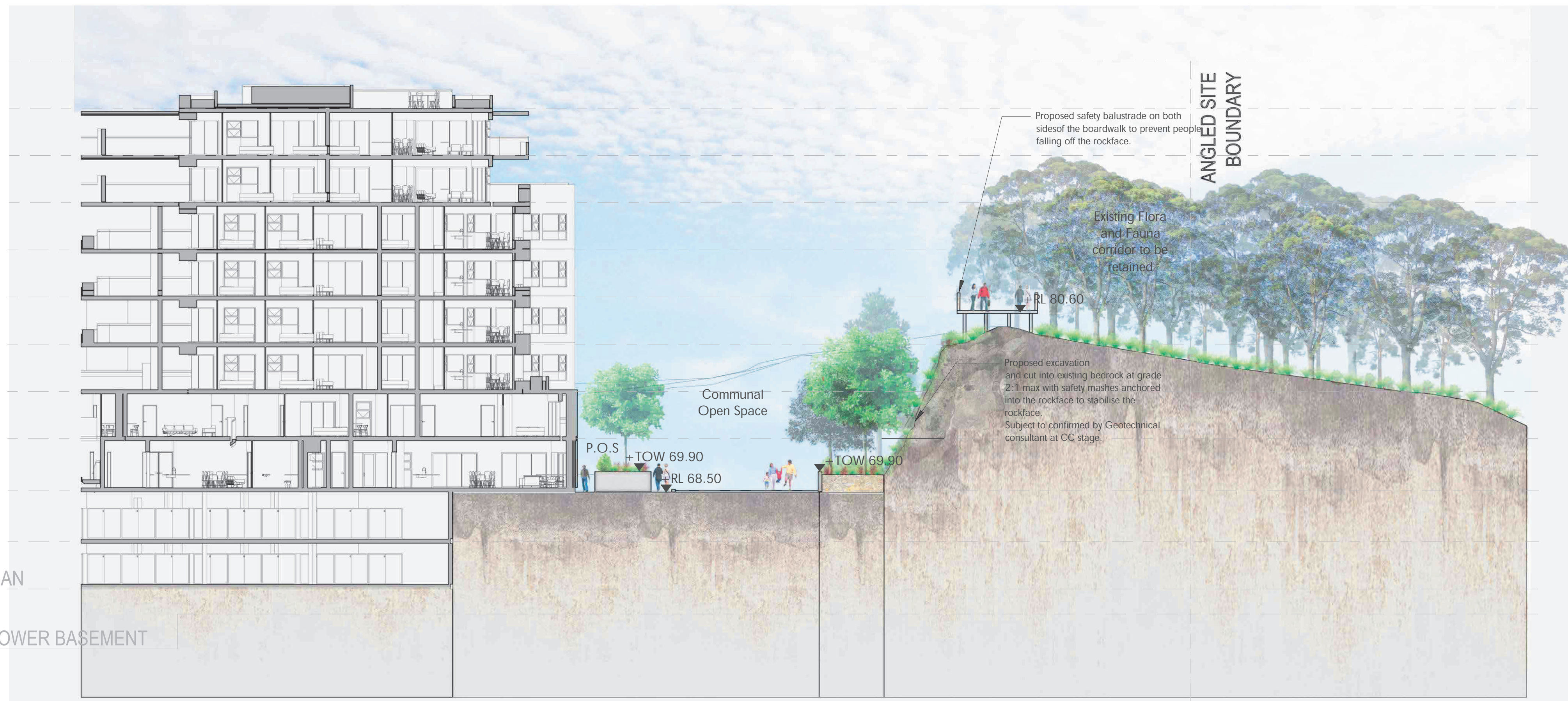
Project Number	Drawing Number	Rev
19002	DA005.10	12
Coordinator : Approver	Checked : Checker	
Scale: As indicated @ A1	Date Printed: 26/07/2021 2:10:22 PM	
File Name:		

- LEVEL 6
RL 84.80
- LEVEL 5
RL 81.60
- LEVEL 4
RL 78.40
- LEVEL 3
RL 75.20
- LEVEL 2
RL 72.00
- LEVEL 1
RL 68.50
- GFL
RL 65.00
- BASEMENT PLAN
RL 61.80
- RL 60.10 - LOWER BASEMENT



SECTION GG
SCALE 1:400 @A3

- LEVEL 10
RL 97.60
- LEVEL 9
RL 94.40
- LEVEL 8
RL 91.20
- LEVEL 7
RL 88.00
- LEVEL 6
RL 84.80
- LEVEL 5
RL 81.60
- LEVEL 4
RL 78.40
- LEVEL 3
RL 75.20
- LEVEL 2
RL 72.00
- LEVEL 1
RL 68.50
- GFL
RL 65.00
- BASEMENT PLAN
RL 61.80
- RL 60.10 - LOWER BASEMENT



SECTION HH
SCALE 1:400 @A3

Rev:	Revision note:	Date:	Dwn by:
E	FOR DA APPROVAL	14.02.20	LZ
F	FOR DA APPROVAL	20.02.20	LZ
G	AMENDMENTS FOR DA APPROVAL	22.06.20	PG/LZ
H	AMENDMENTS FOR DA APPROVAL	17.07.20	PG/LZ
I	AMENDMENTS FOR DA APPROVAL	06.08.20	PG/LZ
J	AMENDMENTS FOR DA APPROVAL	07.08.20	PG/LZ
K	AMENDMENTS FOR DA APPROVAL	21.08.20	LZ
L	AMENDMENTS FOR DA APPROVAL	14.09.20	PG
M	AMENDMENTS FOR DA APPROVAL	19.10.20	JG/LZ
N	AMENDMENTS FOR DA APPROVAL	11.02.21	LZ
O	AMENDMENTS FOR DA APPROVAL	27.05.21	PG/LZ





SECTION II
SCALE 1:400 @A3



Indicative imagery for potential design outcome of the rockface stabilisation.

- LEVEL 11
RL 100.80
- LEVEL 10
RL 97.60
- LEVEL 9
RL 94.40
- LEVEL 8
RL 91.20
- LEVEL 7
RL 88.00
- LEVEL 6
RL 84.80
- LEVEL 5
RL 81.60
- LEVEL 4
RL 78.40
- LEVEL 3
RL 75.20
- LEVEL 2
RL 72.00
- LEVEL 1
RL 68.50
- GFL
RL 65.00
- BASEMENT PLAN
RL 61.80
- RL 60.10 - LOWER BASEMENT



SECTION JJ
SCALE 1:400 @A3