

LEGEND:

- SITE BOUNDARY LINE
- SETBACKS
- APZ SETBACKS
- NON-BUILDABLE AREA

PARKING LEGEND (2 LEVELS)

U = UNIT CAR SPACE NO STORAGE (6 SPACES)
US = UNIT CAR SPACE WITH STORAGE (250 SPACES)
V = VISITOR CAR SPACE (42 SPACES)

NOTE:
ACC = ACCESSIBLE CAR SPACE (32 SPACES)
(INCLUDED IN UNIT AND VISITOR CAR SPACES CALCULATION
NOT LESS THAN 10 % OF THE REQUIRED RESIDENT AND VISITOR SPACES)

GTP = GREEN TRAVEL PLAN CAR SPACE - CAR SHARING / ELECTRIC CAR CHARGING STATION (7 SPACES)

M = MOTORCYCLE SPACE (17 SPACES)

BASEMENT STORAGE

1.18 X 2.4 X 2.2 m = 6.2 m³
MIN. BASEMENT STORAGE 6.2 m³ / UNIT

PROPOSED PARKING

BASEMENT LEVEL:

SINGLE PARKING SPACE (UNITS)	= 172
VISITORS PARKING SPACE	= 23
TOTAL BASEMENT PARKING	= 195

NOTE: INCLUDED 4 SPACES FOR GREEN TRAVEL PLAN (GTP- CAR SHARING AND ELECTRIC CHARGING STATION)

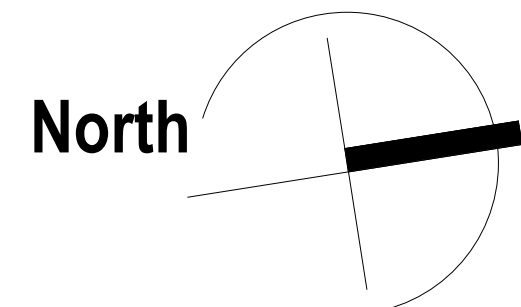
UPPER BASEMENT (GFL) LEVEL:

SINGLE PARKING SPACE	= 92
VISITORS PARKING SPACE	= 18
TOTAL UPPER BASEMENT PARKING	= 110

NOTE: INCLUDED 3 SPACE FOR GREEN TRAVEL PLAN (GTP - CAR SHARING AND ELECTRIC CHARGING STATION)

TOTAL PARKING PROPOSED = 305

NOTE: INCLUDED 7 SPACE FOR GREEN TRAVEL PLAN (GTP - CAR SHARING AND ELECTRIC CHARGING STATION)



Rev.	Description	Date	Chk	Drw
16	RFI SUBMISSION	26.07.21	JS	JS
15	RTS RESUBMISSION	27.05.21	JS	PL
14	SSD DA RESUBMISSION	19.03.21	JS	PL
13	SSD DA RESUBMISSION (DRAFT)	26.02.21	JS	PL
12	ISSUE FOR CONSULTANT	29.01.21	JS	PL
11	ISSUE FOR CONSULTANT	19.01.21	JS	PL
10	ISSUE FOR CONSULTANT	12.10.20	JS	PL
9	SSD DA RESUBMISSION	25.08.20	JS	PL
8	ISSUE FOR CONSULTANT	06.08.20	JS	PL

ADGarchitects

Suite 3.04, Level 3, 107-109 Marn St, Gosford NSW 2250
Postal Address P.O. BOX 457 Gosford NSW 2250
ph: 02 4312 5110 fax: 02 4312 3113
e: info@adgarchitects.com.au



Client

JWD DEVELOPMENTS PTY LTD

Title

BASEMENT

Project

87 - 89 JOHN WHITEWAY DRIVE

Location

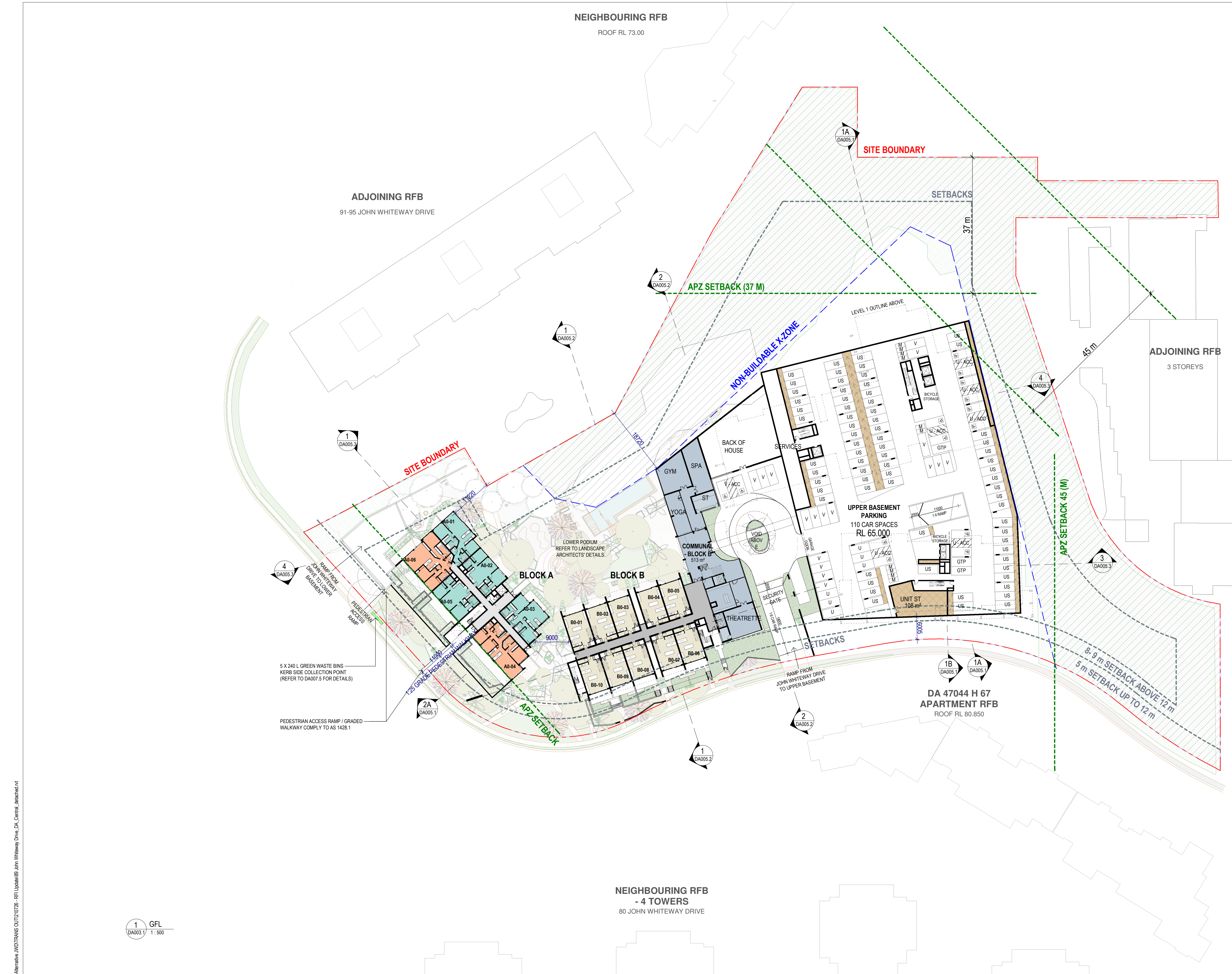
87 - 89 JOHN WHITEWAY DRIVE,
GOSFORD, NSW, 2250

Do not scale drawings. Use figured dimensions only. Check and verify levels and dimensions on site prior to commencement of any work, the fabrication of shop drawings or the fabrication of components.

This drawing is the copyright of ADG Architects and is protected under the Copyright Act 1968. It may not be altered, reproduced or transmitted in any form or by any means without the express permission of ADG Architects.

SSD DA SUBMISSION
NOT TO BE USED DURING CONSTRUCTION

Project Number	Drawing Number	Rev
19002	DA002.1	16
Coordinator : Approver	Checked : Checker	
Scale: As indicated @ A1	Date Printed: 2021-07-26 3:16:28 PM	
File Name:		



GFA CALCULATED AREAS:

- 3 BEDROOM UNIT
- 2 BEDROOM UNIT
- 1 BEDROOM UNIT
- 2 BEDROOM TOWNHOUSE
- 3 BEDROOM TOWNHOUSE
- CORRIDOR
- COMMUNAL

LEGEND:

- SITE BOUNDARY LINE
- SETBACKS
- APZ SETBACKS
- NON-BUILDABLE AREA

PARKING LEGEND (2 LEVELS)

U = UNIT CAR SPACE NO STORAGE (6 SPACES)
US = UNIT CAR SPACE WITH STORAGE (250 SPACES)
V = VISITOR CAR SPACE (42 SPACES)
NOTE:
ACC = ACCESSIBLE CAR SPACE (32 SPACES)
(INCLUDED IN UNIT AND VISITOR CAR SPACES CALCULATION
NOT LESS THAN 10 % OF THE REQUIRED RESIDENT AND VISITOR SPACES)
GTP = GREEN TRAVEL PLAN CAR SPACE - CAR SHARING / ELECTRIC CAR CHARGING STATION (7 SPACES)
M = MOTORCYCLE SPACE (17 SPACES)

BASEMENT STORAGE
1.18 X 2.4 X 2.2 m = 6.2 m³
MIN. BASEMENT STORAGE 6.2 m³ / UNIT

PROPOSED PARKING

BASEMENT LEVEL:

SINGLE PARKING SPACE (UNITS)	= 172
VISITORS PARKING SPACE	= 23
TOTAL BASEMENT PARKING	= 195

NOTE: INCLUDED 4 SPACES FOR GREEN TRAVEL PLAN (GTP - CAR SHARING AND ELECTRIC CHARGING STATION)

UPPER BASEMENT (GFL) LEVEL:

SINGLE PARKING SPACE	= 92
VISITORS PARKING SPACE	= 18
TOTAL UPPER BASEMENT PARKING	= 110

NOTE: INCLUDED 3 SPACE FOR GREEN TRAVEL PLAN (GTP - CAR SHARING AND ELECTRIC CHARGING STATION)

TOTAL PARKING PROPOSED = 305

NOTE: INCLUDED 7 SPACE FOR GREEN TRAVEL PLAN (GTP - CAR SHARING AND ELECTRIC CHARGING STATION)