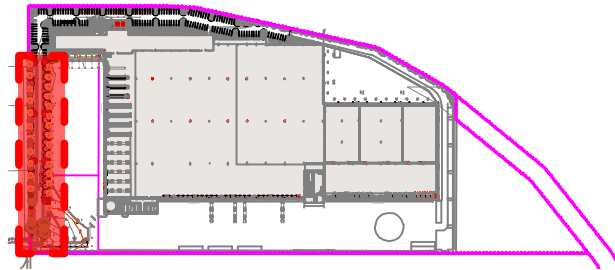


Response to comments from NSW government Planning Industry & Environment department:

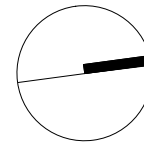
- The proposed Chinese Tallowood species has been removed from the Landscape design and replaced with Claret Ash to achieve an Avenue effect.
- The bulk of the remaining planting has been substituted with **Sandstone Gravel Transition Forest Vegetation & Endemic Cumberland Plain Species**
- The requested salvaging of removed plant material may be achieved by chipping organic material on site and reusing in new garden beds as mulch
- The S4.55 proposes to replace the removal of 51 trees with 62 trees, achieving greater than a 1:1 tree replacement ratio



LOCATION MAP
SCALE: n.t.s

SITE ANALYSIS PLAN

SCALE: 1:500



OTHER LANDSCAPE ITEMS

- ▬ Retaining / raised planter wall - refer engineer's detail
- Trees proposed to be removed and replaced with new landscaping

REV	DATE	NOTATION/AMENDMENT
A	18.06.19	Preliminary plan prepared for review
B	01.07.19	Co-ordinated with amended architectural plan
C	21.08.19	Co-ordinated with Planning Industry & Environment's comments
D	26.08.19	Finalized landscape plan

LOCATION PLAN

Scale: NTS



TREE SURVEY

Existing Trees based on Arborists Report by Tree Consult expert solutions prepared on 26.04.2019

No.#	Species	Size (Ht x Sp)	Condition	Action
1	Eucalyptus tereticornis	15x7	Fair	Remove
2	Eucalyptus tereticornis	9x6	Poor	Remove
3	Eucalyptus tereticornis	10x7	Fair	Remove
4	Eucalyptus tereticornis	6x3	Fair	Remove
5	Eucalyptus tereticornis	12x6	Fair	Remove
6	Eucalyptus tereticornis	12x6	Fair	Remove
7	Eucalyptus tereticornis	10x3	Fair	Remove
8	Eucalyptus tereticornis	7x4	Fair	Remove
9	Eucalyptus tereticornis	13x7	Fair	Remove
10	Eucalyptus tereticornis	13x5	Fair	Remove
11	Eucalyptus tereticornis	12x7	Fair	Remove
12	Eucalyptus tereticornis	11x5	Fair	Remove
13	Eucalyptus tereticornis	12x4	Fair	Remove
14	Eucalyptus tereticornis	14x4	Fair	Remove
15	Eucalyptus tereticornis	12x5	Fair	Remove
16	Eucalyptus tereticornis	8x6	Poor	Remove
17	Eucalyptus tereticornis	11x4	Fair	Remove
18	Eucalyptus tereticornis	12x4	Fair	Remove
19	Jacaranda mimosifolia	4.5x4	Fair	Remove
20	Jacaranda mimosifolia	3x2	Fair	Remove
21	Corymbia maculata	15x6	Fair	Remove
22	Eucalyptus baueriana	6x3	Fair	Remove
23	Casuarina glauca	7.5x2	Fair	Remove
24	Acacia fimbriata	4.5x4	Fair	Remove
25	Acacia fimbriata	4x4	Fair	Remove

TREE SURVEY

Existing Trees based on Arborists Report by Tree Consult expert solutions prepared on 26.04.2019

No.#	Species	Size (Ht x Sp)	Condition	Action
26	Acacia fimbriata	3.5x2	Fair	Remove
27	Allocasuarina torulosa	5x2	Fair	Remove
28	Allocasuarina torulosa	7x2	Fair	Remove
29	Casuarina glauca	11x6	Fair	Remove
30	Casuarina glauca	9x6	Fair	Remove
31	Casuarina glauca	12x4	Fair	Remove
32	Casuarina glauca	11x5	Fair	Remove
33	Eucalyptus saligna	14x6	Fair	Remove
34	Eucalyptus tereticornis	9x4	Poor	Remove
35	Casuarina glauca	6x2	Good	Remove
36	Eucalyptus tereticornis	4x1	Poor	Remove
37	Allocasuarina torulosa	5x5	Fair	Remove
38	Casuarina glauca	6x2	Fair	Remove
39	Allocasuarina torulosa	5x3	Fair	Remove
40	Allocasuarina torulosa	7x4	Fair	Remove
41	Allocasuarina torulosa	4x2.5	Fair	Remove
42	Eucalyptus tereticornis	14x7	Fair	Remove
43	Casuarina glauca	8x2	Good	Remove
44	Casuarina glauca	9x2	Good	Remove
45	Allocasuarina torulosa	4x2	Fair	Remove
46	Allocasuarina torulosa	4x2.5	Fair	Remove
47	Eucalyptus tereticornis	2x0.6	Fair	Remove

DRAWING SCHEDULE

SHEET #	DRAWING TITLE	REV.
	SITE ANALYSIS	D
/1	LANDSCAPE PLAN-1	D
/2	LANDSCAPE PLAN-2	D
/3	LANDSCAPE PLAN-3	D
/4	DETAILS	A
/5	SPECIFICATION	A

PROPOSED COMMERCIAL CAR PARKING DEVELOPMENT
BURANDO ROAD, PRESTONS NSW

Conzept
Landscape Architects

Suite 101, 506 Miller St
CAMMERAY NSW 2062

Phone: 9922 5312
Fax: 8209 4982
Mob: 0413 861 351

www.conzept.net.au
enquiries@conzept.net.au

LEGEND & SCHEDULE

- NOTES:**
1. ALL FINAL PLANT QUANTITIES INDICATED ON PLANS SHALL BE CHECKED AND VERIFIED BY SUCCESSFUL LANDSCAPE CONTRACTOR.
 2. ANY PLANT SUBSTITUTES REQUIRED DUE TO UNAVAILABILITY SHALL BE RECOMMENDED BY THE LANDSCAPE CONTRACTOR TO BEST MATCH SUBSTITUTED PLANTS AND APPROVED PRIOR TO PURCHASING BY THE LANDSCAPE ARCHITECT.
 3. WORKS CERTIFIED FOR FINAL OCCUPANCY CERTIFICATE ARE TO MATCH APPROVED LANDSCAPE PLANS.
 4. LANDSCAPE CONTRACTOR SHALL LOCATE AND AVOID SITE STORM WATER & DRAINAGE SERVICES. LOCATE TREES A MINIMUM 1.25M FROM PITS.
 5. ALL PLANTING AROUND EXISTING TREES SHALL BE ADJUSTED TO AVOID DAMAGE AND CLASHING WITH SURFACE ROOTS.
 6. THE NATURE STRIP (STREET FRONTAGE) FOR THE SITE IS PUBLIC LAND, AND ONLY AUTHORIZED WORKS MAY OCCUR HERE. EXISTING CONDITIONS SUCH AS STREET TREES, COUNCIL PLANTING ETC SHALL BE RETAINED AND PROTECTED DURING CONSTRUCTION, UNLESS SPECIFIC APPROVAL HAS BEEN GRANTED FOR NEW WORK IN THIS AREA.

SCHEDULE FOR LANDSCAPE PLAN-1

TREES

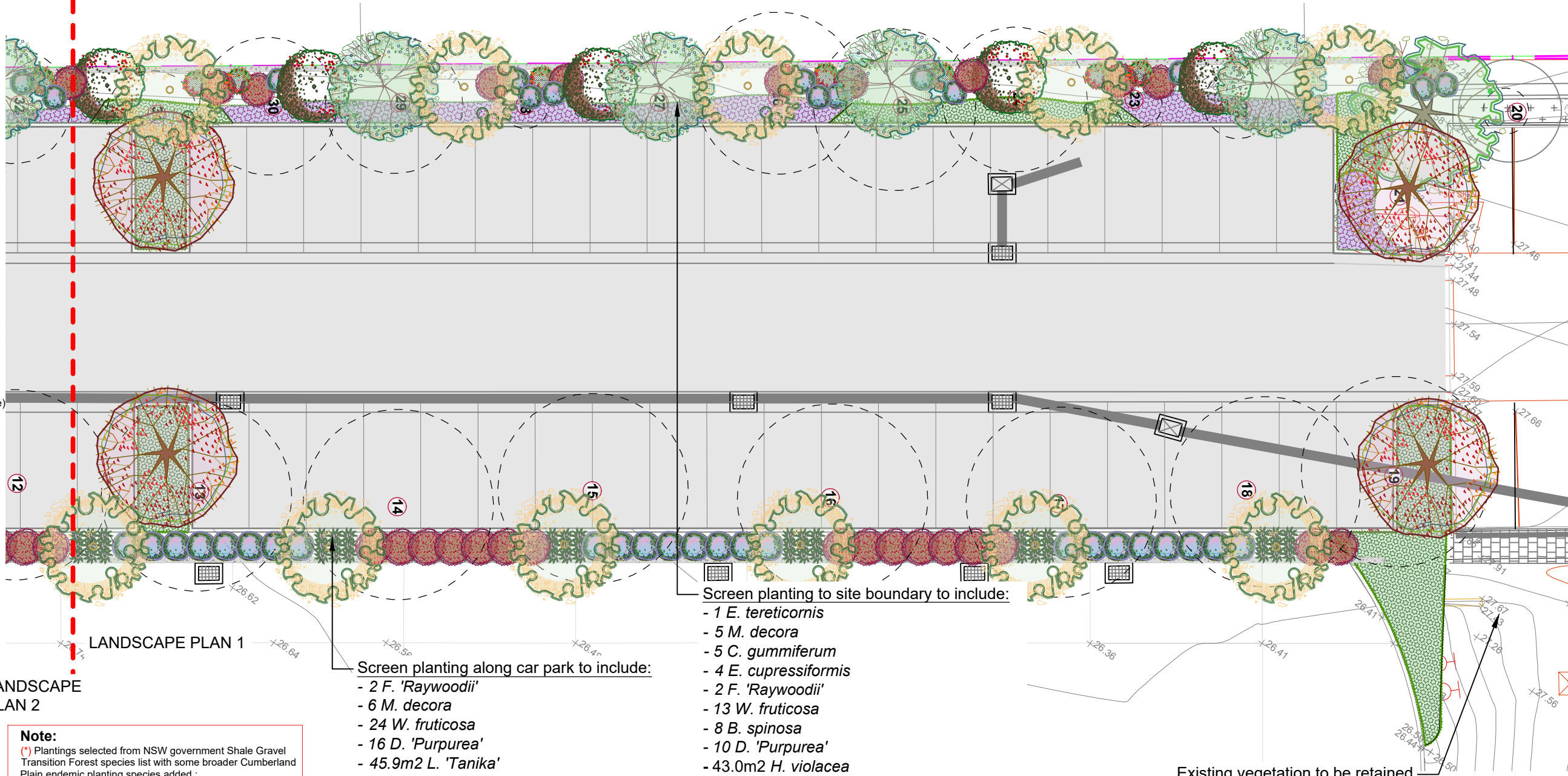
- Botanical Name:** *Eucalyptus tereticornis*(*)
Common Name: Forest Red Gum (Native)
Pot size: 100Lt
Mature H x S: 15-20m x 5-8m
Qty Required: 1
- Botanical Name:** *Melaleuca decora*(*)
Common Name: White feather honeymyrtle (Native)
Pot size: 100Lt
Mature H x S: 6m x 4m
Qty Required: 11
- Botanical Name:** *Exocarpos cupressiformis*(*)
Common Name: Native cherry (Native)
Pot size: 100Lt
Mature H x S: 6m x 3m
Qty Required: 4
- Botanical Name:** *Ceratopetalum gummiferum*
Common Name: NSW Christmas Bush (Native)
Pot size: 100Lt
Mature H x S: 5-8m x 3-4m
Qty Required: 5
- Botanical Name:** *Fraxinus 'Raywoodii'*
Common Name: Claret Ash (Exotic)
Pot size: 100Lt
Mature H x S: 10m x 5m
Qty Required: 4

SHRUBS AND HEDGES

- Botanical Name:** *Bursaria spinosa*(*)
Common Name: Blackthorn (Native)
Pot size: 300mm
Mature H x S: 2-3m x 1m
Qty Required: 8
- Botanical Name:** *Dodonaea viscosa 'Purpurea'*(*)
Common Name: Purple Sticky Hop Bush (Native)
Pot size: 300mm
Mature H x S: 2m x 1.5m
Qty Required: 26
- Botanical Name:** *Westringia fruticosa*
Common Name: Native Rosemary (Native)
Pot size: 300mm
Mature H x S: 1.3m x 1.1m
Qty Required: 37

GRASSES / GROUNDCOVERS

- Botanical Name:** *Dianella revoluta*(*)
Common Name: Black Anther Flax Lily (Native)
Pot size: 200mm
Mature H x S: 0.7m x 0.65m
Qty Required: 54
- Botanical Name:** *Hardenbergia violacea*(*)
Common Name: Purple Coral Pea (Native)
Pot size: 140mm
Mature H x S: 0.3m x 1.5m
Qty Required: 5/m² (43.0m² total)
- Botanical Name:** *Lomandra longifolia 'Tanika'*
Common Name: Lomandra Tanika (Native)
Pot size: 200mm
Mature H x S: 0.8m x 0.8m
Qty Required: 3/m² (36.4m² total)



LANDSCAPE PLAN 2

Note:
(*) Plantings selected from NSW government Shale Gravel Transition Forest species list with some broader Cumberland Plain endemic planting species added : <https://www.environment.nsw.gov.au/>



LANDSCAPE PLAN NOTES

This plan should be read in conjunction with the architectural and hydraulics plans. Work specific to these plans should be prepared in accordance to these plans, including specification and details prior to the installation of landscaping, and should not be altered or compromised during landscape construction. Elements such as drainage swales may be incorporated in garden bed areas (using non-floatable mulch) without compromising the capacity or form.

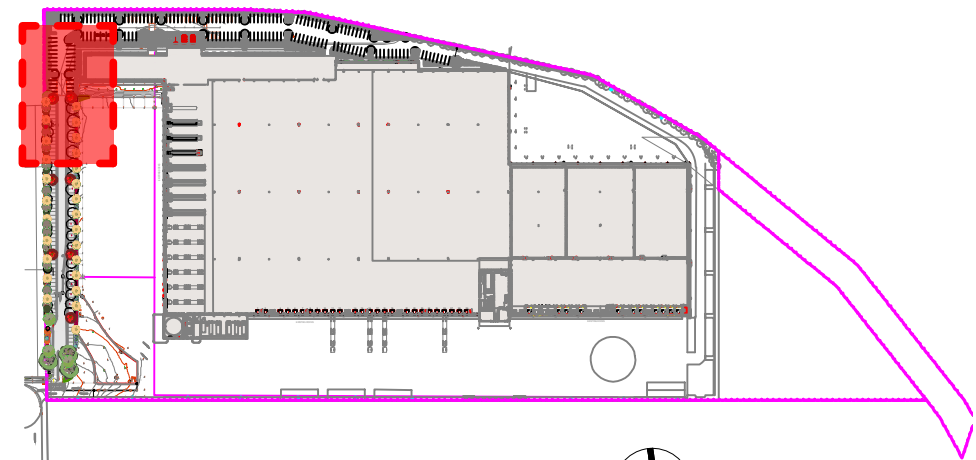
This plan has been prepared for Development Application approval only, not for construction.

This plan has been prepared with reference to **LIVERPOOL Councils** Landscaping Guidelines & requirements. Planting proposed using mainly indigenous, commercially available plant species selected from local planting lists and the BASIX local plant list and from Sydney Waters "Plant Selector" web site

one-drip rated native plants (*acceptable for Basix planting*).

The Design & location of new letter boxes shall be in accordance with Australia Post's "Requirements for Delivery of Mail to Residential Premises" published Feb '97. All noxious weeds listed in Councils weed lists & located on the site shall be continually removed & suppressed. Reinstate all boundary fencing in poor condition with Council approved 1.8m fencing to rear of building line, rake to 1m forward of BL. Pollution, sediment & erosion control devices as specified shall be in place, and maintained for the duration of the construction period. Proposed excavation near existing established trees to be supervised by arborist.

D.A approved landscape plan's are required to be constructed as approved to obtain occupancy certificate. **Permeable areas may be indicated to achieve site coverage restrictions & should be constructed as drawn on this plan.**



LOCATION MAP

SCALE: n.t.s

General Notes:

Figured dimensions take preference to scale readings. Verify all dimensions on site. PDF'd plans may vary slightly in Scale for that indicated on plans. Report any discrepancies to the Landscape Architect before proceeding with the work.

© Copyright R. L. Frew Landscape Architectural Services T/A CONZEPT
This drawing is protected by copyright. All rights are reserved. Unless permitted under the Copyright Act 1968, no part of this drawing may in any form or by any means be reproduced, published, broadcast or transmitted without the prior written permission of the copyright owner.
If the Status of this drawing is not signed off For Construction it may be subject to change, alteration or amendment at the discretion of our office. If so, Concept is not liable for any loss, damage, harm or injury whether special, consequential, direct or indirect, suffered by you or any other person as a result of your use of this drawing for construction purposes.
These plans and associated IP remain the property of R. L. Frew Landscape Architectural Services Pty Ltd (T/A Concept) until such time as all agreed payments are made in full. We retain the right to withdraw this information from the assessment process if such payments are not made following the notification period.

AILA Associate



www.dialbeforeyoudig.com.au



Bar Scale



REV	DATE	NOTATION/AMENDMENT
A	18.06.19	Preliminary plan prepared for review
B	01.07.19	Co-ordinated with amended architectural plan
C	21.08.19	Co-ordinated with Planning Industry & Environment's comments
D	26.08.19	Finalized landscape plan

COUNCIL	LIVERPOOL
CLIENT	ALDI PRESTONS
ARCHITECT	BARKER RYAN STEWART
STATUS / ISSUE	DA - ISSUE D

Conzept
Landscape Architects

Conzept Landscape Architects Suite 101, 506 Miller St CAMMERAY NSW 2062
Phone: 9922 5312 Fax: 8209 4982
www.conzept.net.au enquiries@conzept.net.au Mob: 0413 861 351

TITLE:	LANDSCAPE PLAN-1	DWG.No:	LPDA 19 - 195 / 1
SCALE:	1:200 @ A3	DATE:	JUNE 2019
PROJECT:	PROPOSED COMMERCIAL CAR PARKING DEVELOPMENT	DRAWN:	K.Z
LOCATION:	BURANDO ROAD PRESTONS	CHECKED:	R.F

LEGEND & SCHEDULE

- NOTES:
1. ALL FINAL PLANT QUANTITIES INDICATED ON PLANS SHALL BE CHECKED AND VERIFIED BY SUCCESSFUL LANDSCAPE CONTRACTOR.
 2. ANY PLANT SUBSTITUTES REQUIRED DUE TO UNAVAILABILITY SHALL BE RECOMMENDED BY THE LANDSCAPE CONTRACTOR TO BEST MATCH SUBSTITUTED PLANTS AND APPROVED PRIOR TO PURCHASING BY THE LANDSCAPE ARCHITECT.
 3. WORKS CERTIFIED FOR FINAL OCCUPANCY CERTIFICATE ARE TO MATCH APPROVED LANDSCAPE PLANS.
 4. LANDSCAPE CONTRACTOR SHALL LOCATE AND AVOID SITE STORM WATER & DRAINAGE SERVICES. LOCATE TREES A MINIMUM 1.25M FROM PITS
 5. ALL PLANTING AROUND EXISTING TREES SHALL BE ADJUSTED TO AVOID DAMAGE AND CLASHING WITH SURFACE ROOTS.
 6. THE NATURE STRIP (STREET FRONTAGE) FOR THE SITE IS PUBLIC LAND, AND ONLY AUTHORIZED WORKS MAY OCCUR HERE. EXISTING CONDITIONS SUCH AS STREET TREES, COUNCIL PLANTING ETC SHALL BE RETAINED AND PROTECTED DURING CONSTRUCTION, UNLESS SPECIFIC APPROVAL HAS BEEN GRANTED FOR NEW WORK IN THIS AREA.

SCHEDULE FOR LANDSCAPE PLAN-2

TREES

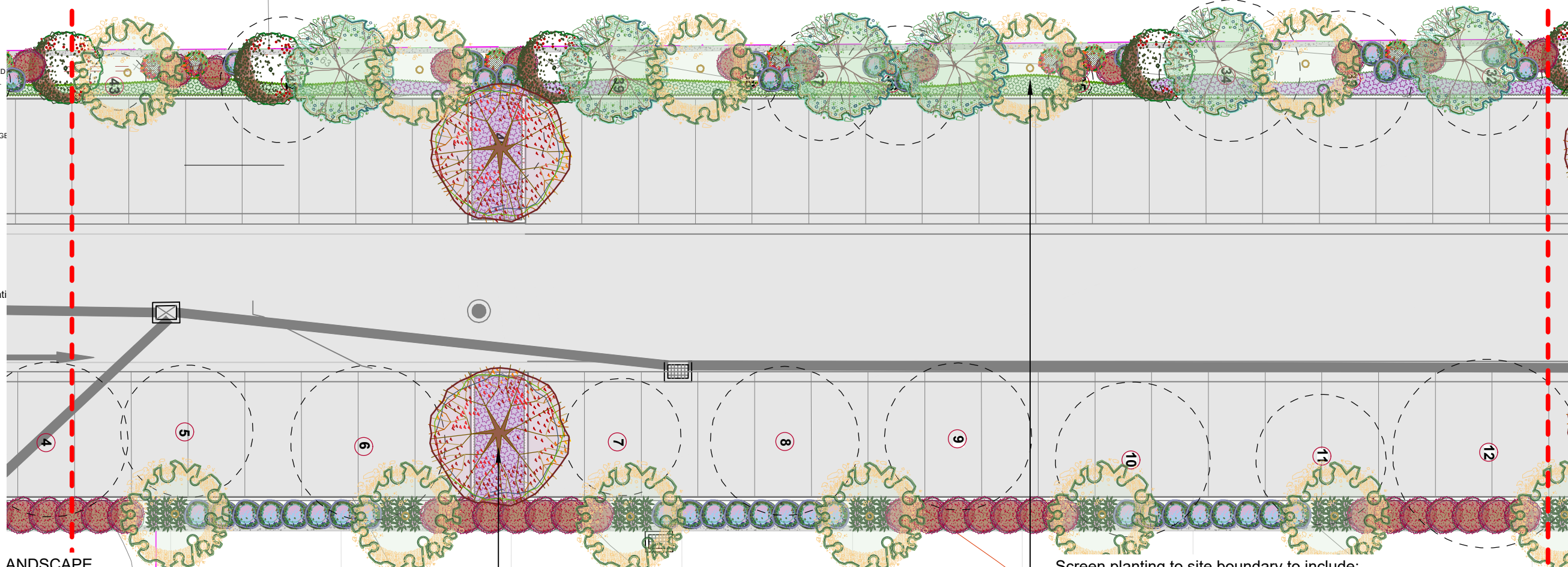
- Botanical Name:** *Melaleuca decora* (*)
Common Name: White feather honeymyrtle (Native)
Pot size: 100Lt
Mature H x S: 6m x 4m
Qty Required: 11
- Botanical Name:** *Exocarpos cupressiformis* (*)
Common Name: Native cherry (Native)
Pot size: 100Lt
Mature H x S: 6m x 3m
Qty Required: 6
- Botanical Name:** *Ceratopetalum gummiferum*
Common Name: NSW Christmas Bush (Native)
Pot size: 100Lt
Mature H x S: 5-8m x 3-4m
Qty Required: 3
- Botanical Name:** *Fraxinus 'Raywoodii'*
Common Name: Claret Ash (Exotic)
Pot size: 100Lt
Mature H x S: 10m x 5m
Qty Required: 2

SHRUBS AND HEDGES

- Botanical Name:** *Bursaria spinosa* (*)
Common Name: Blackthorn (Native)
Pot size: 300mm
Mature H x S: 2-3m x 1m
Qty Required: 9
- Botanical Name:** *Dodonaea viscosa 'Purpurea'* (*)
Common Name: Purple Sticky Hop Bush (Native)
Pot size: 300mm
Mature H x S: 2m x 1.5m
Qty Required: 36
- Botanical Name:** *Westringia fruticosa*
Common Name: Native Rosemary (Native)
Pot size: 300mm
Mature H x S: 1.3m x 1.1m
Qty Required: 39

GRASSES / GROUNDCOVERS

- Botanical Name:** *Dianella revoluta* (*)
Common Name: Black Anther Flax Lily (Native)
Pot size: 200mm
Mature H x S: 0.7m x 0.65m
Qty Required: 54
- Botanical Name:** *Hardenbergia violacea* (*)
Common Name: Purple Coral Pea (Native)
Pot size: 140mm
Mature H x S: 0.3m x 1.5m
Qty Required: 5/m² (43.6m² total)
- Botanical Name:** *Lomandra longifolia 'Tanika'*
Common Name: Lomandra Tanika (Native)
Pot size: 200mm
Mature H x S: 0.8m x 0.8m
Qty Required: 3/m² (27.2m² total)



LANDSCAPE PLAN 3

LANDSCAPE PLAN 2

LANDSCAPE PLAN 2

Note:
(*) Plantings selected from NSW government Shale Gravel Transition Forest species list with some broader Cumberland Plain endemic planting species added : <https://www.environment.nsw.gov.au/>

Screen planting along car park to include:
- 1 *F. 'Raywoodii'*
- 6 *M. decora*
- 24 *W. fruticosa*
- 24 *D. 'Purpurea'*
- 12.0m² *H. violacea*
- 54 *D. revoluta*

Screen planting to site boundary to include:
- 5 *M. decora*
- 3 *C. gummiferum*
- 6 *E. cupressiformis*
- 1 *F. 'Raywoodii'*
- 15 *W. fruticosa*
- 9 *B. spinosa*
- 12 *D. 'Purpurea'*
- 31.6m² *H. violacea*
- 27.2m² *L. 'Tanika'*



LANDSCAPE PLAN NOTES

This plan should be read in conjunction with the architectural and hydraulics plans. Work specific to these plans should be prepared in accordance to these plans, including specification and details prior to the installation of landscaping, and should not be altered or compromised during landscape construction. Elements such as drainage swales may be incorporated in garden bed areas (using non-floatable mulch) without compromising the capacity or form.

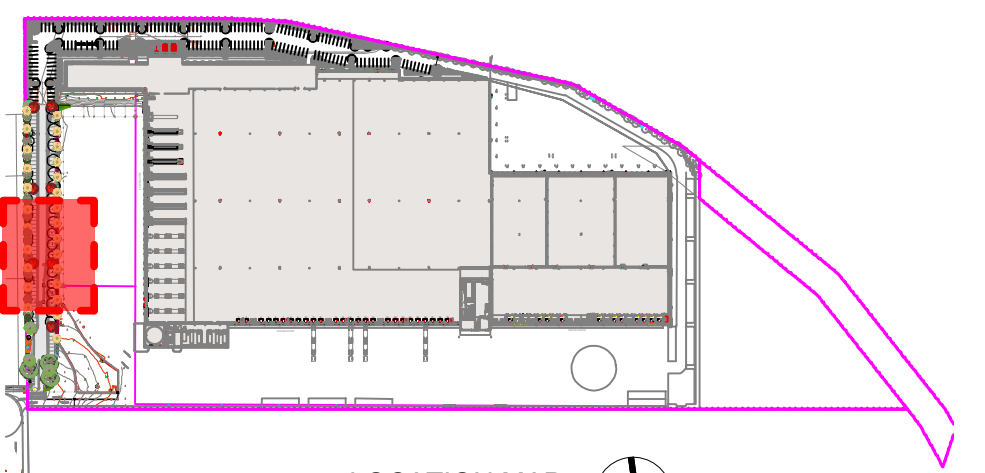
This plan has been prepared for Development Application approval only, not for construction.

This plan has been prepared with reference to LIVERPOOL Councils Landscaping Guidelines & requirements. Planting proposed using mainly indigenous, commercially available plant species selected from local planting lists and the BASIX local plant list and from Sydney Waters "Plant Selector" web site

one-drip rated native plants (acceptable for Basix planting).

The Design & location of new letter boxes shall be in accordance with Australia Post's "Requirements for Delivery of Mail to Residential Premises" published Feb '97. All noxious weeds listed in Councils weed lists & located on the site shall be continually removed & suppressed. Reinstate all boundary fencing in poor condition with Council approved 1.8m fencing to rear of building line, rake to 1m forward of BL. Pollution, sediment & erosion control devices as specified shall be in place, and maintained for the duration of the construction period. Proposed excavation near existing established trees to be supervised by arborist.

D.A approved landscape plan's are required to be constructed as approved to obtain occupancy certificate. Permeable areas may be indicated to achieve site coverage restrictions & should be constructed as drawn on this plan.



LOCATION MAP
SCALE: n.t.s

General Notes:
Figured dimensions take preference to scale readings. Verify all dimensions on site. PDF'd plans may vary slightly in Scale for that indicated on plans. Report any discrepancies to the Landscape Architect before proceeding with the work.
© Copyright R. L. Frew Landscape Architectural Services T/A CONZEPT
This drawing is protected by copyright. All rights are reserved. Unless permitted under the Copyright Act 1968, no part of this drawing may in any form or by any means be reproduced, published, broadcast or transmitted without the prior written permission of the copyright owner.
If the Status of this drawing is not signed off For Construction it may be subject to change, alteration or amendment at the discretion of our office. It is. Concept is not liable for any loss, damage, harm or injury whether special, consequential, direct or indirect, suffered by you or any other person as a result of your use of this drawing for construction purposes.
These plans and associated IP remain the property of R. L. Frew Landscape Architectural Services Pty Ltd (T/A Concept) until such time as all agreed payments are made in full. We retain the right to withdraw this information from the assessment process if such payments are not made following the notification period.

AILA Associate
www.dialbeforeyoudig.com.au
DIAL 1100 BEFORE YOU DIG
Australian Institute of Landscape Architects
Bar Scale
0 2 4 6 8 10m

REV	DATE	NOTATION/AMENDMENT
A	18.06.19	Preliminary plan prepared for review
B	01.07.19	Co-ordinated with amended architectural plan
C	21.08.19	Co-ordinated with Planning Industry & Environment's comments
D	26.08.19	Finalized landscape plan

COUNCIL	LIVERPOOL
CLIENT	ALDI PRESTONS
ARCHITECT	BARKER RYAN STEWART
STATUS / ISSUE	DA - ISSUE D

Conzept
Landscape Architects
Suite 101, 506 Miller St
CAMMERAY NSW 2062
Phone: 9922 5312
Fax: 8209 4982
www.conzept.net.au
enquiries@conzept.net.au

TITLE:
LANDSCAPE PLAN-2
PROPOSED COMMERCIAL CAR PARKING DEVELOPMENT
BURANDO ROAD PRESTONS


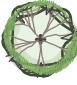

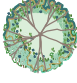
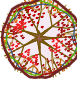
DWG No:	LPDA 19 - 195 / 2
SCALE:	1:200 @ A3
DATE:	JUNE 2019
DRAWN:	K.Z
CHECKED:	R.F

LEGEND & SCHEDULE






- NOTES:**
 1. ALL FINAL PLANT QUANTITIES INDICATED ON PLANS SHALL BE CHECKED AND VERIFIED BY SUCCESSFUL LANDSCAPE CONTRACTOR.
 2. ANY PLANT SUBSTITUTES REQUIRED DUE TO UNAVAILABILITY SHALL BE RECOMMENDED BY THE LANDSCAPE CONTRACTOR TO BEST MATCH SUBSTITUTED PLANTS AND APPROVED PRIOR TO PURCHASING BY THE LANDSCAPE ARCHITECT.
 3. WORKS CERTIFIED FOR FINAL OCCUPANCY CERTIFICATE ARE TO MATCH APPROVED LANDSCAPE PLANS.
 4. LANDSCAPE CONTRACTOR SHALL LOCATE AND AVOID SITE STORM WATER & DRAINAGE SERVICES. LOCATE TREES A MINIMUM 1.25M FROM PITS
 5. ALL PLANTING AROUND EXISTING TREES SHALL BE ADJUSTED TO AVOID DAMAGE AND CLASHING WITH SURFACE ROOTS.
 6. THE NATURE STRIP (STREET FRONTAGE) FOR THE SITE IS PUBLIC LAND, AND ONLY AUTHORIZED WORKS MAY OCCUR HERE. EXISTING CONDITIONS SUCH AS STREET TREES, COUNCIL PLANTING ETC SHALL BE RETAINED AND PROTECTED DURING CONSTRUCTION, UNLESS SPECIFIC APPROVAL HAS BEEN GRANTED FOR NEW WORK IN THIS AREA.

SCHEDULE FOR LANDSCAPE PLAN-3

TREES

-  **Botanical Name:** *Eucalyptus tereticornis*(*)
Common Name: Forest Red Gum (Native)
Pot size: 100Lt
Mature H x S: 15-20m x 5-8m
Qty Required: 3
-  **Botanical Name:** *Corymbia maculata*(*)
Common Name: Spotted Gum (Native)
Pot size: 100Lt
Mature H x S: 35-45m x 14-20m
Qty Required: 3
-  **Botanical Name:** *Melaleuca decora*(*)
Common Name: White feather honeymyrtle (Native)
Pot size: 100Lt
Mature H x S: 6m x 4m
Qty Required: 4
-  **Botanical Name:** *Exocarpos cupressiformis*(*)
Common Name: Native cherry (Native)
Pot size: 100Lt
Mature H x S: 6m x 3m
Qty Required: 2
-  **Botanical Name:** *Fraxinus 'Raywoodii'*
Common Name: Claret Ash (Exotic)
Pot size: 100Lt
Mature H x S: 10m x 5m
Qty Required: 1
-  **Botanical Name:** *Ceratopetalum gummiferum*
Common Name: NSW Christmas Bush (Native)
Pot size: 100Lt
Mature H x S: 5-8m x 3-4m
Qty Required: 2


GRASSES / GROUNDCOVERS

-  **Botanical Name:** *Themeda australis 'Mingo'*(*)
Common Name: Dwarf Kangaroo Grass (Native)
Pot size: 140mm
Mature H x S: 0.2m x .6m
Qty Required: 5/m2 (95.1m2 total)
-  **Botanical Name:** *Lomandra longifolia 'Tanika'*
Common Name: Lomandra Tanika (Native)
Pot size: 200mm
Mature H x S: 0.8m x 0.8m
Qty Required: 3/m2 (29.5m2 total)
-  **Botanical Name:** *Hardenbergia violacea*(*)
Common Name: Purple Coral Pea (Native)
Pot size: 140mm
Mature H x S: 0.3m x 1.5m
Qty Required: 5/m2 (83.2m2 total)
-  **Botanical Name:** *Dianella revoluta*(*)
Common Name: Black Anther Flax Lily (Native)
Pot size: 200mm
Mature H x S: 0.7m x 0.65m
Qty Required: 27
-  **Botanical Name:** *Lomandra multiflora subsp. multiflora*(*)
Common Name: Many-flowered Mat-rush (Native)
Pot size: 300mm
Mature H x S: 0.5m x 0.5m
Qty Required: 21

SHRUBS AND HEDGES

-  **Botanical Name:** *Bursaria spinosa*(*)
Common Name: Blackthorn (Native)
Pot size: 300mm
Mature H x S: 2-3m x 1m
Qty Required: 9
-  **Botanical Name:** *Dodonaea viscosa 'Purpurea'*(*)
Common Name: Purple Sticky Hop Bush (Native)
Pot size: 300mm
Mature H x S: 2m x 1.5m
Qty Required: 25
-  **Botanical Name:** *Callistemon 'Better John'*
Common Name: Better John Bottlebrush (Native)
Pot size: 200mm
Mature H x S: 1m x 0.9m
Qty Required: 41
-  **Botanical Name:** *Metrosideros 'Tahiti'*
Common Name: NZ Christmas Bush (Exotic)
Pot size: 200mm
Mature H x S: 1m x 1m
Qty Required: 2
-  **Botanical Name:** *Westringia fruticosa*
Common Name: Native Rosemary (Native)
Pot size: 300mm
Mature H x S: 1.3m x 1.1m
Qty Required: 45

ACCENT PLANTS

-  **Botanical Name:** *Doryanthes excelsa*
Common Name: Gymea Lily (Native)
Pot size: 45L
Mature H x S: 1.1m x 1m
Qty Required: 12

Note:
 (*) Plantings selected from NSW government Shale Gravel Transition Forest species list with some broader Cumberland Plain endemic planting species added :
<https://www.environment.nsw.gov.au/>



General Notes:
 Figured dimensions take preference to scale readings. Verify all dimensions on site. PDF'd plans may vary slightly in Scale for that indicated on plans. Report any discrepancies to the Landscape Architect before proceeding with the work.
 Copyright R. L. Frew Landscape Architectural Services T/A CONZEPT
 This drawing is protected by copyright. All rights are reserved. Unless permitted under the Copyright Act 1968, no part of this drawing may in any form or by any means be reproduced, published, broadcast or transmitted without the prior written permission of the copyright owner.
 If the Status of this drawing is not signed off For Construction it may be subject to change, alteration or amendment at the discretion of our office. If so, Concept is not liable for any loss, damage, harm or injury whether special, consequential, direct or indirect, suffered by you or any other person as a result of your use of this drawing for construction purposes.
 These plans and associated IP remain the property of R. L. Frew Landscape Architectural Services Pty Ltd (T/A Concept) until such time as all agreed payments are made in full. We retain the right to withdraw this information from the assessment process if such payments are not made following the notification period.

AILA Associate
 Australian Institute of Landscape Architects
www.dialbeforeyoudig.com.au
DIAL 1100 BEFORE YOU DIG
 Bar Scale: 0 2 4 6 8 10m

REV	DATE	NOTATION/AMENDMENT
A	18.06.19	Preliminary plan prepared for review
B	01.07.19	Co-ordinated with amended architectural plan
C	21.08.19	Co-ordinated with Planning Industry & Environment's comments
D	26.08.19	Finalized landscape plan

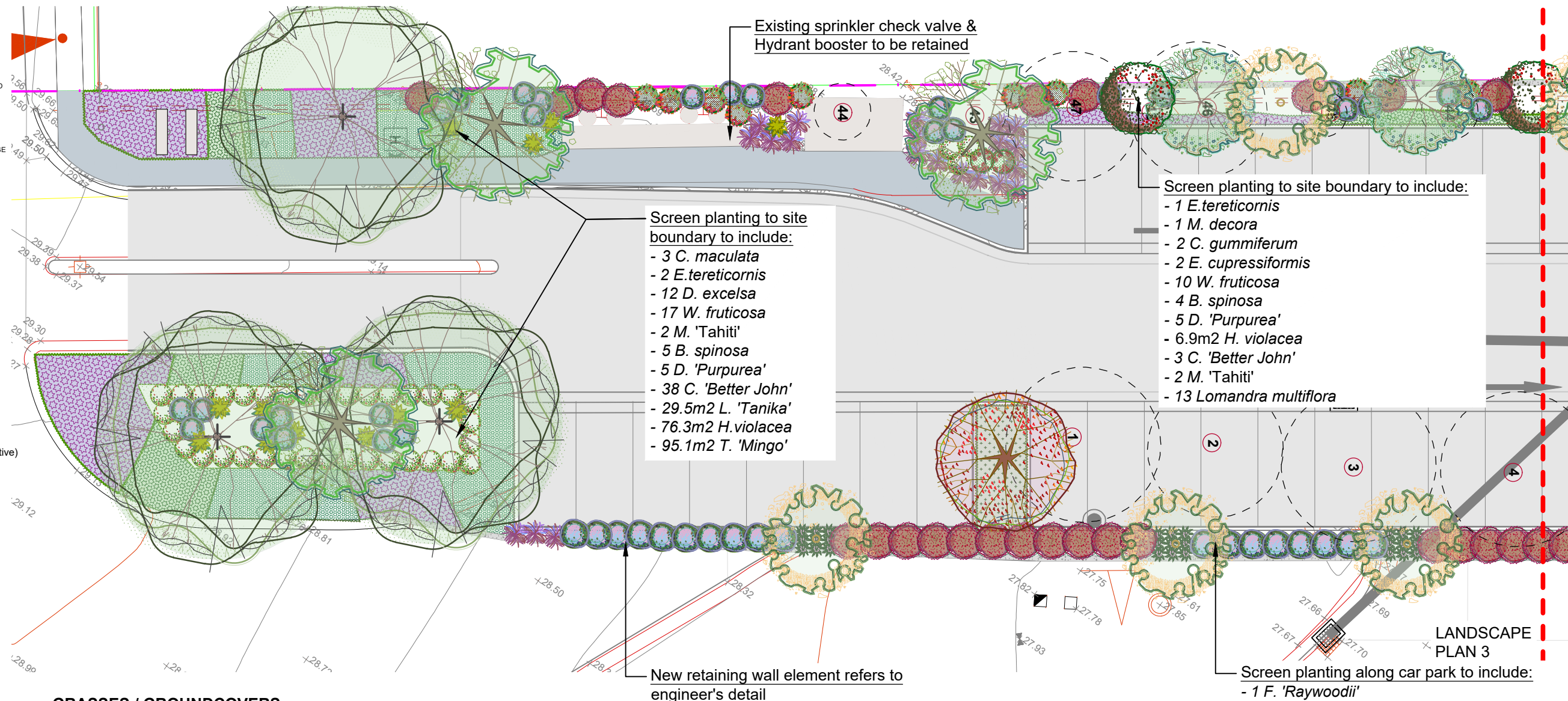
COUNCIL	LIVERPOOL
CLIENT	ALDI PRESTONS
ARCHITECT	BARKER RYAN STEWART
STATUS / ISSUE	DA - ISSUE D

Conzept Landscape Architects
 Suite 101, 506 Miller St
 CAMMERAY NSW 2062
 Phone: 9922 5312
 Fax: 8209 4982
 www.conzept.net.au
 enquiries@conzept.net.au
 Mob: 0413 861 351

LOCATION MAP
 SCALE: n.t.s.

TITLE:
LANDSCAPE PLAN-3
 PROPOSED COMMERCIAL CAR PARKING DEVELOPMENT
BURANDO ROAD PRESTONS

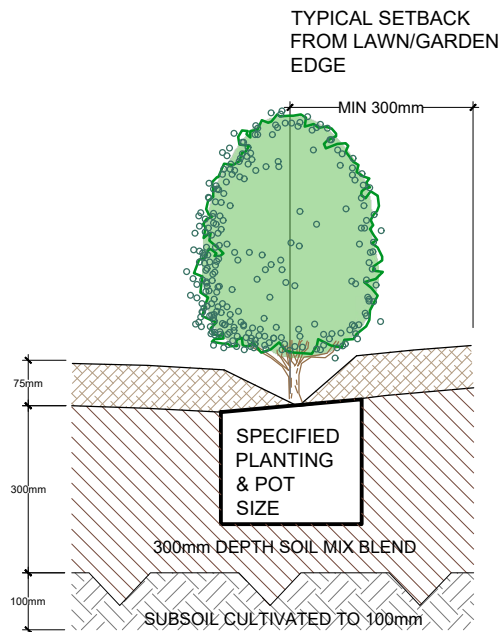
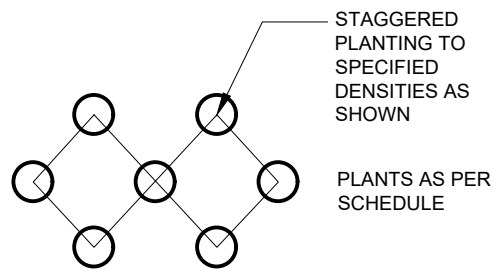
DWG.No:	LPDA 19 - 195 / 3
SCALE:	1:200 @ A3
DATE:	JUNE 2019
DRAWN:	K.Z
CHECKED:	R.F



- Screen planting to site boundary to include:**
- 3 *C. maculata*
 - 2 *E. tereticornis*
 - 12 *D. excelsa*
 - 17 *W. fruticosa*
 - 2 *M. 'Tahiti'*
 - 5 *B. spinosa*
 - 5 *D. 'Purpurea'*
 - 38 *C. 'Better John'*
 - 29.5m2 *L. 'Tanika'*
 - 76.3m2 *H. violacea*
 - 95.1m2 *T. 'Mingo'*

- Screen planting to site boundary to include:**
- 1 *E. tereticornis*
 - 1 *M. decora*
 - 2 *C. gummiferum*
 - 2 *E. cupressiformis*
 - 10 *W. fruticosa*
 - 4 *B. spinosa*
 - 5 *D. 'Purpurea'*
 - 6.9m2 *H. violacea*
 - 3 *C. 'Better John'*
 - 2 *M. 'Tahiti'*
 - 13 *Lomandra multiflora*

- Screen planting along car park to include:**
- 1 *F. 'Raywoodii'*
 - 3 *M. decora*
 - 18 *W. fruticosa*
 - 15 *D. 'Purpurea'*
 - 12.1m2 *L. 'Tanika'*
 - 27 *D. revoluta*
 - 3 *Lomandra multiflora*



NOTE
THIS DETAIL IS ONLY APPLICABLE FOR PLANTING AREA OUTSIDE TREE PROTECTION ZONE OF TREES TO BE RETAINED. NO CHANGES ARE TO OCCUR TO EXISTING LEVELS, INCLUDING RIPPING/CULTIVATING OF THE SOIL WITHIN THE TPZ OF TREES TO BE RETAINED ON SITE

75mm DEPTH "FOREST BLEND" MULCH OR EQUIVALENT

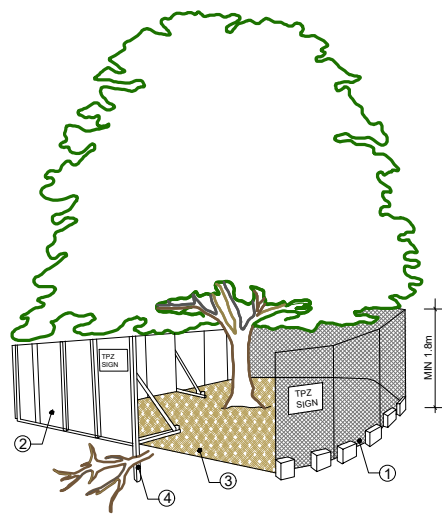
SOIL MIX:
50% OF STOCKPILED SITE TOPSOIL FREE FROM ALL BUILDER'S RUBBISH AND DELETERIOUS MATERIALS. TOPSOIL TO BE MIXED WITH MINIMUM 50% IMPORTED GARDEN MIX OR SOIL CONDITIONER/ COMPOSTED ORGANIC MATTER - SEE SPEC. USE 100% IMPORTED SOIL MIX WHEN SITE TOPSOIL RUNS OUT.

MASS PLANTING SETOUT

N.T.S

TYPICAL GARDEN PREPARATION DETAIL

SCALE 1:10



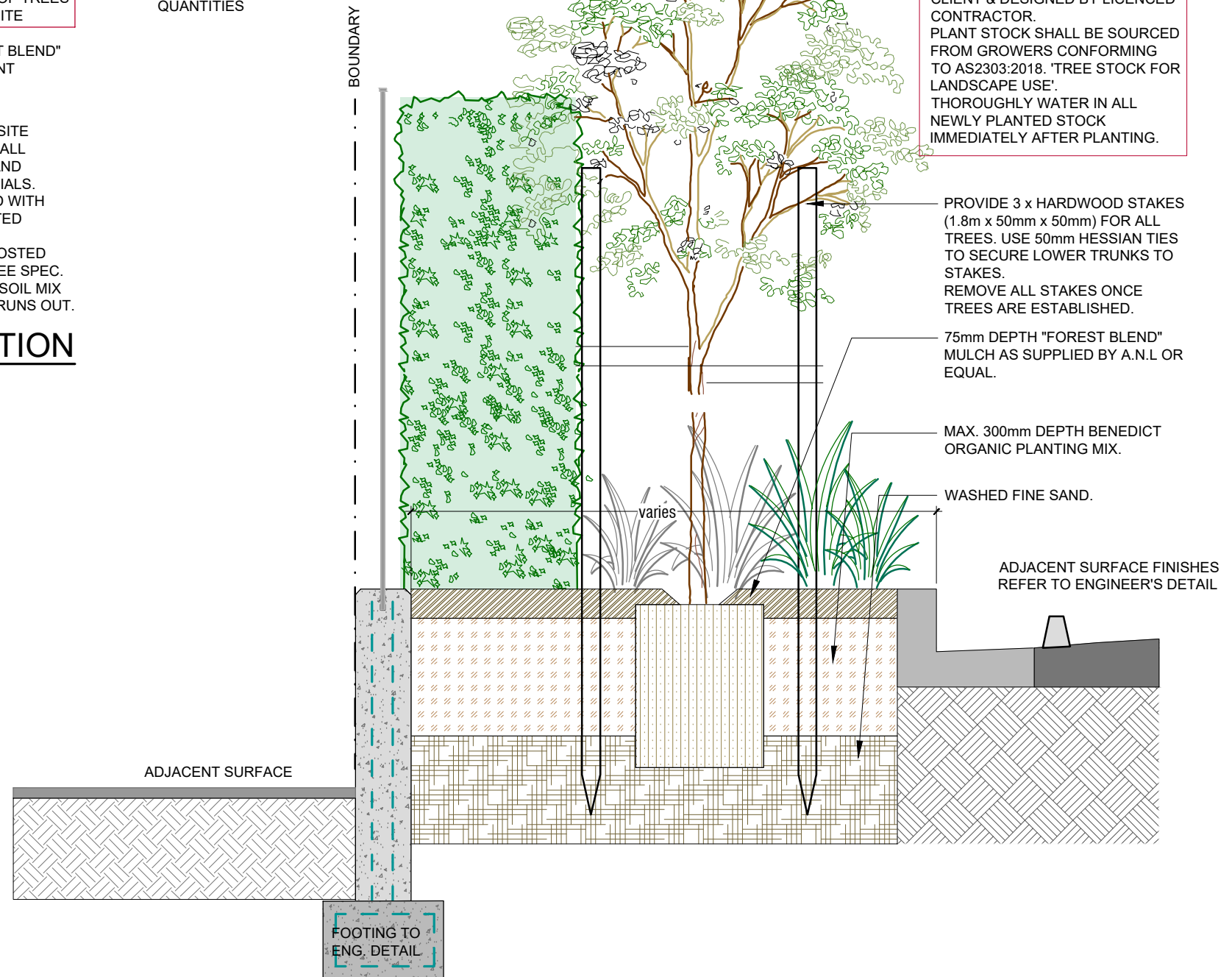
1. CHAIN WIRE MESH PANELS WITH SHADE CLOTH (IF REQUIRED) ATTACHED, HELD IN PLACE WITH CONCRETE FEET
2. ALTERNATIVE PLYWOOD OR WOODEN PALING FENCE PANELS. THE FENCING MATERIAL ALSO PREVENTS BUILDING MATERIALS OR SOIL ENTERING THE TPZ
3. MULCH INSTALLATION ACROSS SURFACE OF TPZ (AT THE DISCRETION OF THE PROJECT ARBORIST). NO EXCAVATION, CONSTRUCTION ACTIVITY, GRADE CHANGES, SURFACE TREATMENT OR STORAGE OF MATERIALS OF ANY KIND IS PERMITTED WITHIN THE TPZ
4. BRACING IS PERMISSIBLE WITHIN THE TPZ. INSTALLATION OF SUPPORTS TO AVOID DAMAGING ROOTS
5. PRUNING & MAINTENANCE TO TREE REFER TO AS 4373-2007 PRUNING OF AMENITY TREES

PROVIDE FENCING AS DETAILED TO ALL TREES PROPOSED TO BE RETAINED ON THE SUBJECT SITE. FENCING TO BE LOCATED TO THE DRIP LINE OF TREES OR AS INDICATED ON PLANS OR DIRECTED ON-SITE BY ARBORIST. NO STOCKPILING WITHIN FENCE PERIMETERS.

TREE PROTECTION ZONE

N.T.S

REFER LANDSCAPE PLAN FOR TREE SPECIES, POT SIZES AND QUANTITIES



NOTE: DRIP IRRIGATION MAY BE REQUIRED AS NOMINATED BY CLIENT & DESIGNED BY LICENCED CONTRACTOR. PLANT STOCK SHALL BE SOURCED FROM GROWERS CONFORMING TO AS2303:2018. 'TREE STOCK FOR LANDSCAPE USE'. THOROUGHLY WATER IN ALL NEWLY PLANTED STOCK IMMEDIATELY AFTER PLANTING.

SECTION A-A: TYPICAL TREE PLANTING IN CARPARK

SCALE:NTS

General Notes: Figured dimensions take preference to scale readings. Verify all dimensions on site. PDF'd plans may vary slightly in Scale for that indicated on plans. Report any discrepancies to the Landscape Architect before proceeding with the work. © Copyright R. L. Frew Landscape Architectural Services T/A CONZEPT This drawing is protected by copyright. All rights are reserved. Unless permitted under the Copyright Act 1968, no part of this drawing may in any form or by any means be reproduced, published, broadcast or transmitted without the prior written permission of the copyright owner. If the Status of this drawing is not signed off For Construction it may be subject to change, alteration or amendment at the discretion of our office. If so, Conzept is not liable for any loss, damage, harm or injury whether special, consequential, direct or indirect, suffered by you or any other person as a result of your use of this drawing for construction purposes. These plans and associated IP remain the property of R. L. Frew Landscape Architectural Services Pty Ltd (T/A Conzept) until such time as all agreed payments are made in full. We retain the right to withdraw this information from the assessment process if such payments are not made following the notification period.	 www.dialbeforeyoudig.com.au Australia Institute of Landscape Architects	REV DATE A 18.06.19	NOTATION/AMENDMENT Preliminary plan prepared for review	COUNCIL LIVERPOOL	 Conzept Landscape Architects Suite 101, 506 Miller St CAMMERAY NSW 2062 Phone: 9922 5312 Fax: 8209 4982 enquiries@conzept.net.au Mob: 0413 861 351	TITLE: DETAILS PROPOSED COMMERCIAL CAR PARKING DEVELOPMENT BURANDO ROAD PRESTONS	DWG.No: LPDA 19 - 195 / 4
		CLIENT ALDI PRESTONS	ARCHITECT BARKER RYAN STEWART	STATUS / ISSUE DA - ISSUE A		SCALE: AS SHOWN @ A3	DATE: JUNE 2019

LANDSCAPE WORK SPECIFICATION

PRELIMINARIES

1.01 GENERAL

The following general conditions should be considered prior to the commencement of landscape works:

- The landscape plans should be read in conjunction with the architectural plans, hydraulic plans, service plans and survey prepared for the proposed development.
- All services including existing drainage should be accurately located prior to the commencement of landscape installation. Any proposed tree planting which falls close to services will be relocated on site under the instruction of the landscape architect.
- Installation of conduit for required irrigation, electrical and other services shall be completed prior to the commencement of hardscape works and hardstand pours.
- All outdoor lighting specified by architect or client to be installed by qualified electrician
- Anomalies that occur in these plans should be brought to our immediate attention.
- Where an Australian Standard applies for any landscape material testing or installation technique, that standard shall be followed.

1.02 PROTECTION OF ADJACENT FINISHES

The Contractor shall take all precautions to prevent damage to all or any adjacent finishes by providing adequate protection to these areas / surfaces prior to the commencement of the Works

1.03 PROTECTION OF EXISTING TREES

Existing trees identified to be retained shall be done so in accordance with AS 4970-2009 Protection of trees on development sites as well as in accordance with the tree protection measures prepared by project arborist.

Where general works are occurring around such trees, or pruning is required, a qualified Arborist shall be engaged to oversee such works and manage tree health.

Existing trees designated on the drawing for retention shall be protected at all times during the construction period. Any soil within the drip-line of existing trees shall be excavated and removed by hand only. No stockpiling shall occur within the root zone of existing trees to be retained.

Any roots larger in diameter than 50mm shall only be severed under instruction by a qualified arborist. Roots smaller than 50mm diameter shall be cut cleanly with a saw.

Temporary fencing shall be installed around the base of all trees to be retained prior to the commencement of landscape works. Where possible this fencing will be located around the drip line of these trees, or a minimum of 3m from the trunk. The fencing shall be maintained for the full construction period.

1.04 EROSION & POLLUTION CONTROL

The Contractor shall take all proper precautions to prevent the erosion of soil from the subject site. The contractor shall install erosion & sediment control barriers and as required by council, and maintain these barriers throughout the construction period. Note that the sediment control measures adopted should reflect the soil type and erosion characteristics of the site.

Erosion & pollution control measures shall incorporate the following:

- Construction of a sediment trap at the vehicle access point to the subject site.
- Sediment fencing using a geotextile filter fabric in the location indicated on the erosion control plan or as instructed on site by the landscape architect.
- Earth banks to prevent scour of stockpiles
- Sandbag kerb sediment traps
- Straw bale & geotextile sediment filter.
- Exposed banks shall be pegged with an approved Jute matting in preparation for mass planting

Refer to 'Guidelines for Erosion and Sediment Control on Building Sites' by DLWC (2000) for construction techniques

SOIL WORKS

2.01 MATERIALS

Specified Soil Conditioner (Generally to improve site soil)

The specified soil conditioner for site top-soil improvement shall be an organic mix complies with AS 4454-2012 Composts, soil conditioners and mulches. Note that for sites where soil testing indicates toxins or extremes in pH, or soils that are extremely poor, allow to excavate and supply 300mm of imported soil mix.

New gardens & proposed Planting

New garden and planting areas shall consist of a 50/50 mix of clean site soil (refer d) below) and imported soil. All mixes are to comply with AS4419-2003 Soils for Landscaping and garden use, & AS 4454 Composts, Soil conditioners & mulches.

Specified Soil Mix - Turf

The specified soil mix for all turf areas shall be a min 75mm layer of imported soil mix consisting of 80% washed river sand (reasonably coarse), and 20% composted organic matter equivalent to mushroom compost or soil conditioner, or other approved lawn top dress.

Site Topsoil

Site topsoil is to be clean and free of unwanted matter such as gravel, clay lumps, grass, weeds, tree roots, sticks, rubbish and plastics, and any deleterious materials and materials toxic to plants. The topsoil must have a pH of between 5.5 and 7. Use 100% imported soil mix when site when site topsoil runs out.

2.02 INSTALLATION

Note: No level changes (Cut or Fill), soil ripping within the Tree Protection Zones of trees to be retained

a) Testing

All testing is to be conducted in accordance with AS4419-2003 Soils for Landscaping and garden use Methods for testing soils for engineering purposes. Site soil shall be given a pH test prior to modifying to ensure conditions are appropriate for planting as stated above. Tests shall be taken in several areas where planting is proposed, and the pH shall be adjusted accordingly with sulphur or lime to suit.

Note that a soil test conducted by the Sydney Environmental & Soil Laboratory or approved equal shall be prepared for all commercial, industrial and multi-unit residential sites. The successful landscape contractor shall implement the recommendations of this test.

b) Set Out of Individual Trees & Mass Planting Areas

All individual tree planting positions and areas designated for mass planting shall be set out with stakes or another form of marking, ready for inspection and approval. Locate all services.

c) Establishing Subgrade Levels

Subgrade levels are defined as the finished base levels prior to the placement of the specified material (i.e. soil conditioner). The following subgrade levels shall apply:

- Mass Planting Beds - 300mm below existing levels with specified imported soil mix.
- Turf areas - 100mm below finished surface level.

Note that all subgrades shall consist of a relatively free draining natural material, consisting of site topsoil placed previously by the Civil Contractor. No builders waste material shall be acceptable.

d) Subgrade Cultivation

Cultivate all subgrades to a minimum depth of 100mm in all planting beds and all turf areas, ensuring a thorough breakup of the subgrade into a reasonably coarse tilth. Grade subgrades to provide falls to surface and subsurface drains, prior to the placement of the final specified soil mix.

e) Drainage Works

Install surface and subsurface drainage where required and as detailed on the drawing. Drain subsurface drains to outlets provided, with a minimum fall of 1:100 to outlets and / or service pits.

f) Placement and Preparation of Specified Soil Conditioner & Mixes.

- Trees in turf & beds - Holes shall be twice as wide as root ball and minimum 100mm deeper - backfill hole with 50/50 mix of clean site soil and imported "Organic Garden Mix" as supplied by ANL or approved equal.
 - Mass Planting Beds - Install specified soil conditioner to a compacted depth of 100mm
- Place the specified soil conditioner to the required compacted depth and use a rotary hoe to thoroughly mix the conditioner into the top 300mm of garden bed soil. Ensure thorough mixing and the preparation of a reasonably fine tilth and good growing medium in preparation for planting.
- Turf Areas - Install specified soil mix to a minimum compacted depth of 75mm.
- Place the specified soil mix to the required compacted depth and grade to required finished soil levels, in preparation for planting and turfing.

PLANTING

3.01 MATERIALS

a) Quality and Size of Plant Material

All trees supplied above a 25L container size must be grown and planted in accordance with AS 2303:2018 Tree stock for landscape use. Certification that trees have been grown to AS2303:2018 guidelines is to be provided upon request of Council's Tree Management Officer.

Above - Ground Assessment:

The following plant quality assessment criteria should be followed:

Plant true to type, Good vigour and health, free from pest & disease, free from injury, self-supporting, good stem taper, has been pruned correctly, is apically dominant, has even crown symmetry, free from included bark & stem junctions, even trunk position in pot, good stem structure

Below - Ground Assessment:

Good root division & direction, rootball occupancy, rootball depth, height of crown, non-suckering For further explanation and description of these assessment criteria, refer to AS2303:2018.

All Plant material shall be to the type and size specified. No substitutions of plant material shall be permitted without written prior approval by the Landscape Architect. No plant shall be accepted which does not conform to the standards listed above.

b) Stakes and Ties

Provide min. 3 No. Stakes and ties to all plants identified as trees in the plant schedule. Stakes shall be sound, unpainted, straight hardwood, free of knots and pointed at one end. They shall be 2200mm x 50mm x 50mm Hardwood, or approved alternative. Ties shall be 50mm wide hessian webbing material.

c) Fertilisers

Fertilisers shall be approved slow release fertilisers suitable for the proposed planting types. Note that for native plants, specifically Proteaceae family plants including Grevillea species, low phosphorus fertilizers shall be used.

d) Mulch

Mulch shall be an approved equal to "Forest Blend" as supplied by ANL. Mulch shall be completely free from any soil, weeds, rubbish or other debris.

e) Turf

Turf shall be soft leaf Buffalo or equivalent (unless stated otherwise), free from any weeds and other grasses, and be in a healthy growing condition.

3.02 INSTALLATION

a) Setting Out

All planting set out shall be in strict accordance with the drawings, or as directed. Note that proposed tree planting located near services should be adjusted at this stage. Notify Landscape Architect for inspection for approval prior to planting.

b) Planting

All plant material shall be planted as soon after delivery as possible. Planting holes for trees shall be excavated as detailed and specified. Plant containers shall be removed and discarded, and the outer roots gently teased from the soil mass. Immediately set plant in hole and backfill with specified soil mix, incorporating the approved quantity of fertiliser for each plant type. Ensure that plants are set plumb vertically and root balls set to the consolidated finished grades detailed on the drawings. Compact the backfilled soil and saturate by hand watering to expel any remaining air pockets immediately after planting.

c) Staking and Tying

Staking and tying shall be in strict accordance with the drawings and shall occur immediately following plant placement and soil backfilling. All plants identified as "Trees" on the planting schedule shall be staked with a min. 3 stakes.

d) Mulching

Mulch should be spread so that a compacted thickness of 75mm is achieved after settlement in all planting beds and around each individual plant. Apply immediately following planting and watering in, ensuring that a 50mm radius is maintained around the trunk of each plant. There shall be no mixing of soil and mulch material.

e) Turfing

Moisten soil prior to the turf being laid. Turf shall be neatly butt jointed and true to grade to finish flush with adjacent surfaces. Incorporate a lawn fertilizer and thoroughly water in. Keep turf moist until roots have taken and sods/rolls cannot be lifted. Keep all traffic off turf until this has occurred. Allow for top dressing of all turf areas. All turf shall be rolled immediately following installation.

f) Nature Strip and public domain works

The nature strip (street frontage) for the site is public land, and only authorized works may occur here. Existing Conditions such as street trees, council planting etc shall be retained and protected during construction, unless specific approval has been granted for new work in this area. Where council policy specifies a particular unit paver, material finish, pattern or treatment, it shall be the contractors responsibility to check and verify that this material & treatment is correct and current prior to undertaking construction works'

HARDSCAPE WORKS

4.01 GENERAL

The Contractor shall undertake the installation of all hardscape works as detailed on the drawing, or where not detailed, by manufacturers specification.

- Paving - refer to typical details provided, and applicable Australian Standards. *Permeable paving may be used as a suitable means of satisfying Council permeable surface requirements, while providing a useable, hardwearing, practical surface.* In most instances, the client shall nominate the appropriate paving material to be used.

Australian Standards shall be adhered to in relation to all concrete, masonry & metal work. Some details are typical and may vary on site. All hardscape works shall be setout as per the drawings, and inspected and approved by the Landscape Architect prior to installation. All workmanship shall be of the highest standard. Any queries or problems that arise from hardscape variations should be bought to the attention of the Landscape Architect.

Your attention is directed to any obligations or responsibilities under the Dividing Fences Act, 1991 in respect of adjoining property owner/s which may arise from this application. Any enquiries in this regard may be made to the Crown Lands on 1300 886 235.

IRRIGATION WORKS

5.01 GENERAL (PERFORMANCE SPECIFICATION)

This is a general Irrigation Performance Specification only, as a guide for projects requiring irrigation systems as part of consent requirements or building contractual arrangements.

An automated irrigation system is recommended for the effective establishment of new gardens, and to assist with the success of planting areas on terraces, over slabs and in Communal Open Spaces.

The inclusion of this general specification is no guarantee that an irrigation system forms part of the landscape scope of works, which will be determined by the building contract.

New irrigation systems to planting areas shall be a Commercial Grade Irrigation System conforming to all relevant Australian standards, including AS 3500 & the Gas and Electricity (Consumer Safety) Act 2017, Workplace Health & Safety Act 2011, & the latest Sydney Water Code

An automated drip-irrigation system is to be installed to all gardens, planters and lawn areas in accordance with the approved Irrigation Design. This system shall be designed and installed by a qualified and licensed irrigation specialist, to the highest industry standards and to maximise the efficient usage of water.

The installer is required to obtain all approvals necessary for the completion of works in accordance with the Laws of Australia, Laws of the State of NSW, Liverpool Council By-Laws and Ordinances.

Drawings:

- The Landscape Contractor nominated Licensed Irrigation Specialist shall provide irrigation drawings for approval upon engagement.

Design Requirements:

- The irrigation system shall be installed prior to all planting works. It shall incorporate a commercially available irrigation system, with sub-surface dripper lines to irrigate all gardens, planters and lawn areas.
- It shall incorporate a suitable back flow prevention device for the scale of works, an in-line filter, check valves, and suitable high and low density poly hose fittings and PVC piping to achieve flow rates suitable for specified planting.
- The irrigation application rate shall not exceed the infiltration rate of the soil or creates run-off.
- The landscape contractor shall check the existing pressure available from the ring mains and size irrigation piping to suit. Supply shall be from local hose cock where available.
- All piping and fittings shall be buried 50mm below the finished soil levels in garden and lawn areas, and secured in position at 500mm centres with galv wire pins.
- Size of pipes shall be selected to ensure the working pressure at the end of the line does not decrease by more than 5%.

Services Co-ordination:

- Co-ordination required by Landscape Contractor or Project Manager to provide required conduit, pipe work and penetration through slabs and planter walls for water and power provisions.
- The Landscape Contractor shall be engaged with the Irrigation Specialist to co-ordinate with the Project Manager to identify the preferred service and conduit locations.
- Project Manager and Landscape Contractor to establish area suitable for irrigation control system with required area, power provision and water supply.

Testing & Defects:

Upon completion of installation, the system shall be tested, including:

- Main Line Pressure Test: The main line is pressurised to test for leaks. All valves are shut and the pressure is taken over a determined length of time.
- Dripper Pressure Test: Measurement at flushing valves are taken and the pressure gauged to make sure it conforms to the manufacturer recommendations. The inlet pressure is then tested under the same conditions to check it does not exceed 300Kpa.
- All components are to be satisfactorily functional and operational prior to approval. Should any defect develop, or the capacity or efficiency of the system decline during the agreed maintenance system, then these faults shall be immediately rectified.

Warranty :

- A full 12 month warranty shall be included to cover labour and all parts.

Further Documentation:

- On request, a detailed irrigation performance specification report can be issued.

CONSOLIDATION AND MAINTENANCE




6.01 GENERAL

The consolidation and maintenance period shall be 12 months beginning from the approved completion of the specified construction work (Practical Completion). A qualified landscape maintenance contractor shall undertake the required landscape maintenance works. Consolidation and maintenance shall mean the care and maintenance of Contracted works by accepted landscaping or horticultural practices, ensuring that all plants are in optimum growing conditions and appearance at all times, as well as rectifying any defects that become apparent in the contracted works.

This shall include, but not be limited to, the following items where and as required:

- Watering all planting and lawn areas / irrigation maintenance.
- Clearing litter and other debris from landscaped areas.
- Removing weeds, pruning and general plant maintenance.
- Replacement of damaged, stolen or unhealthy plants.
- Make good areas of soil subsidence or erosion.
- Topping up of mulched areas.
- Spray / treatment for Insect and disease control.
- Fertilizing with approved fertilizers at correct rates.
- Mowing lawns & trimming edges each 14 days in summer or 18 days in winter
- Adjusting ties to Stakes
- Maintenance of all paving, retaining and hardscape elements.

On the completion of the maintenance period, the landscape works shall be inspected and at the satisfaction of the superintendent or landscape architect, the responsibility will be signed over to the client.

<p>General Notes:</p> <p><small>Figured dimensions take preference to scale readings. Verify all dimensions on site. PDF'd plans may vary slightly in Scale for that indicated on plans. Report any discrepancies to the Landscape Architect before proceeding with the work.</small></p> <p><small>Copyright R. L. Frew Landscape Architectural Services T/A CONZEPT</small></p> <p><small>This drawing is protected by copyright. All rights are reserved. Unless permitted under the Copyright Act 1968, no part of this drawing may in any form or by any means be reproduced, published, broadcast or transmitted without the prior written permission of the copyright owner.</small></p> <p><small>If the Status of this drawing is not signed off For Construction it may be subject to change, alteration or amendment at the discretion of our office. If so, Conzept is not liable for any loss, damage, harm or injury whether special, consequential, direct or indirect, suffered by you or any other person as a result of your use of this drawing for construction purposes.</small></p> <p><small>These plans and associated IP remain the property of R. L. Frew Landscape Architectural Services Pty Ltd (T/A Conzept) until such time as all agreed payments are made in full. We retain the right to withdraw this information from the assessment process if such payments are not made following the notification period.</small></p>	 <p>Australian Institute of Landscape Architects</p>	 <p>www.dialbeforeyoudig.com.au</p>	REV	DATE	NOTATION/AMENDMENT	COUNCIL	 <p>Conzept Landscape Architects Suite 101, 506 Miller St CAMMERAY NSW 2062 Phone: 9922 5312 Fax: 8209 4982 enquiries@conzept.net.au Mob: 0413 861 351</p>	TITLE:	DWG.No:
			A	18.06.19	Preliminary plan prepared for review	LIVERPOOL		SPECIFICATION PROPOSED COMMERCIAL CAR PARKING DEVELOPMENT BURANDO ROAD PRESTONS	LPDA 19 - 195 / 5 SCALE: DATE: JUNE 2019 DRAWN: K.Z CHECKED: R.F