

18 June 2021

Department of Planning, Industry and Environment
4 Parramatta Square, 12 Darcy Street
Parramatta NSW 2150
Mirvac

Attention: Russell Hand

Re: Waterloo Metro Quarter – Northern & Central Precinct – City of Sydney Council Waste Responses

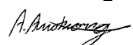
The purpose of this letter is to address City of Sydney Councils *Response to RtS – Waterloo OSD Northern Precinct – SSD 10440*. The Northern Precinct shares waste facilities and a loading dock with the Central Precinct, hence these responses also relate to the Central Precinct.

City of Sydney Response	Elephants Foot Recycling Solutions (EFRS) Response
<p>16 (a) The City is the waste contractor for Building 2. The City does not support more than weekly collection, and as such sufficient bins and storage areas are to be provided.</p> <p>Note: The City recommends that a minimum 50mm be provided between each bin to allow for access/manoeuvrability between bins and provisions for disability access should be considered (i.e. 1500mm aisle width between bin rows and avoid bin stacking). Doorway widths into and out of WSA should be designed with appropriate space to accommodate the movement of the largest bin proposed for development. The Waste Management Plan should identify the path of access for residents, retail staff, cleaners and collection vehicles demonstrating the functionality of the bin stores and loading dock.</p>	<p>2 x weekly collections for residential waste bins and weekly collections for residential recycling bins is consistent with previous Waste Management Plans compiled by EFRS in the City of Sydney Council jurisdiction.</p> <p>Considering the development has over one hundred residential units, 2 x weekly collections should be considered for waste bins due to the high putrescible nature of general waste. Twice weekly collection will reduce issues relating to odour and vermin. Furthermore, twice weekly collections will reduce the bin quantities and storage area required, which is paramount considering the spatial restraints in the loading area.</p> <p>Similar large-scale City of Sydney projects that have previously been approved with twice weekly collections for waste include the following:</p> <ul style="list-style-type: none"> • 505 George Street, Sydney incorporating 507 residential units and approximately 9793m² of NLA allocated to retail tenancies. • 230-238 Sussex Street, Sydney incorporating 102 residential units, 200 hotel suites and a large restaurant. • 71 Macquarie Street, Sydney incorporating 104 residential units and approximately 1000m² of NLA allocated to retail tenancies. <p>Refer to Attachment 2, 3 & 4 for travel paths of residential bins, bulky waste and the route of travel for retail/commercial staff/cleaners.</p>
<p>16 (b) 5 x weekly collections are proposed for Building 1, resulting in excessive truck movements. This is inconsistent with Sustainable Sydney 2030 and the TOD model which seek to reduce vehicle movements. Sufficient bin storage should be provided to allow for no more than 3 x weekly collection.</p>	<p>5 x weekly collections will be maintained for 1100L mixed recycling bins due to spatial constraints within the loading area. Daily collections for food waste will also be maintained due to its high putrescible nature and potential issues with odour and vermin.</p> <p>Based on the waste generation rates in City of Sydney Council's <i>Guidelines for Waste Management in New Developments 2019</i> and EFRS calculations for the retail, commercial and childcare component, a 12m² portable</p>

	<p>compactor (compacting at a 5:1 ratio) would be serviced once a week. Furthermore, cardboard ales and crushed glass receptacles would likely be collected 1-2 x weekly.</p> <p>The building caretaker will monitor the capacity of these streams and will arrange collections with the allocated waste contractor through a booking system when required. There will be fluctuations on the quantities of waste and recycling generated throughout peak seasons, therefore a monitored booking system will encapsulate collections when they are required.</p> <p>The Traffic Consultant has confirmed that 5 x weekly collections for mixed recycling and daily collections for food waste will not affect vehicle movement in the loading area, particularly as other waste and recycling streams will only be collected 1-2 x per week.</p>
<p>16 (c) Food waste generation cannot be merged with general waste. Separate space must be allocated for food waste recycling. Food waste must be stored in bins 240L or smaller</p>	<p>As per the previous letter prepared by EFRS for City of Sydney Council on the 11th of March, food waste separation for the residential component has been considered. A plan has been put in place to separate food waste from general waste if Council's food waste trial progresses to a Council service during operation.</p> <p>If this is to occur, separate 25 x 120L food waste bins or 13 x 240L food waste bins will be provided in the residential waste room (substituting 3 x 1100L general waste bins) and will be caged off from the general waste and recycling bins. Residents will be required to walk their food waste down to the allocated food waste bins.</p> <p>Food waste has already been separated for the retail/commercial component.</p> <p>Refer to Attachment. 1 detailing the caged off area and travel route for residents.</p>
<p>16 (d) Details the ongoing management, storage and collection of waste, including responsibility for cleaning, transfer of bins between storage areas and collection points, implementation and maintenance of signage, and security of storage areas.</p>	<p>These details have already been provided in the Waste Management Plan (Norther Precinct), as per the below:</p> <ul style="list-style-type: none"> • 9 – Stakeholder Roles & Responsibilities (pg. 27) • 11 – Waste and Recycling Storage Areas (pg. 29)
<p>16 (e) Waste management plans for demolition and construction including material storage areas for reusable materials and recyclables during demolition and construction; vehicle access to material storage areas; estimation of quantities and types of materials to be reused, recycled or left over for removal from the site are required. A template is available at appendix A and B of the City of Sydney Guidelines for Waste Management in New Developments 2018</p>	<p>A separate Construction and Demolition WMP will be prepared by the applicant and provided prior to the relevant Construction Certificate. This is consistent with other OSD proposals (such as Pitt Street and Victoria Cross) and the applicant accepts a condition to this effect..</p>

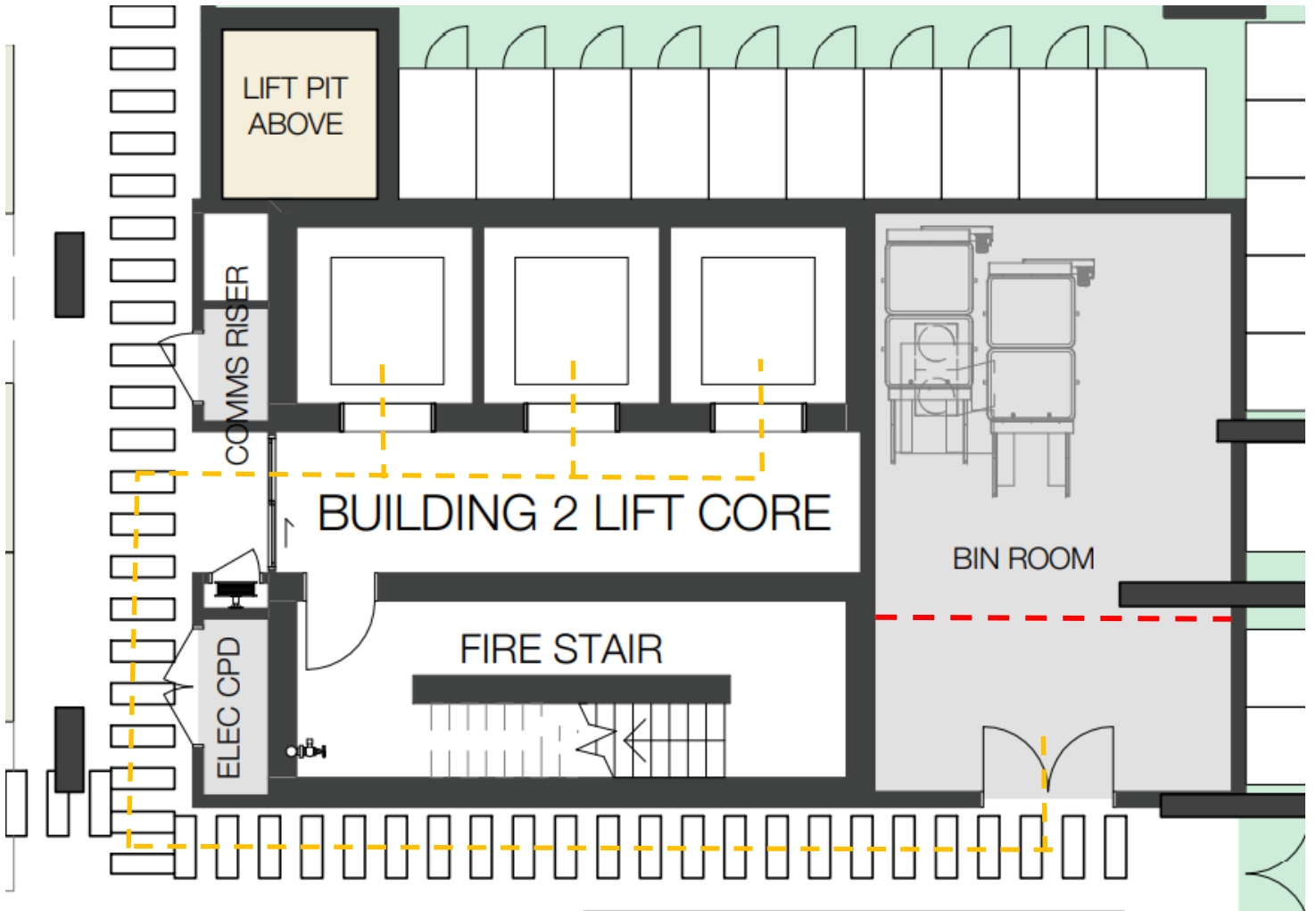
If you require any further information or clarification, please do not hesitate to contact me.

Kind Regards,



Ashleigh Armstrong

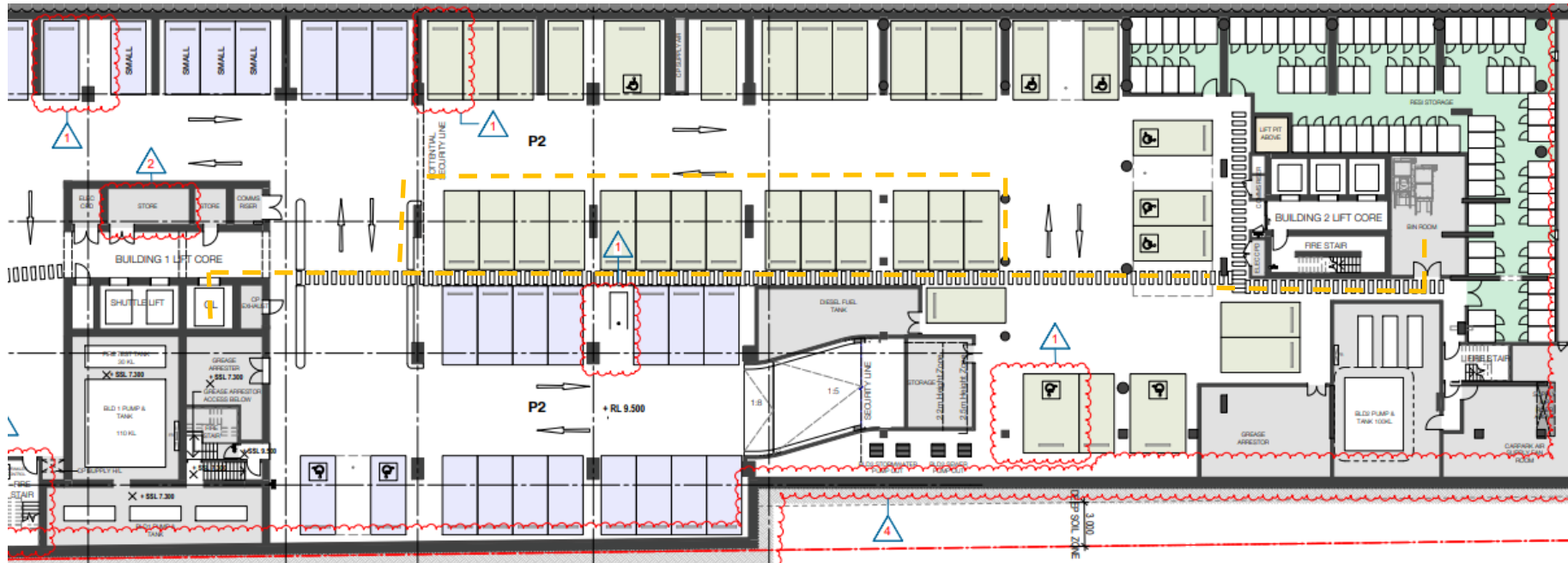
ATTACHMENT 1 – Residential Food Waste Caged Area



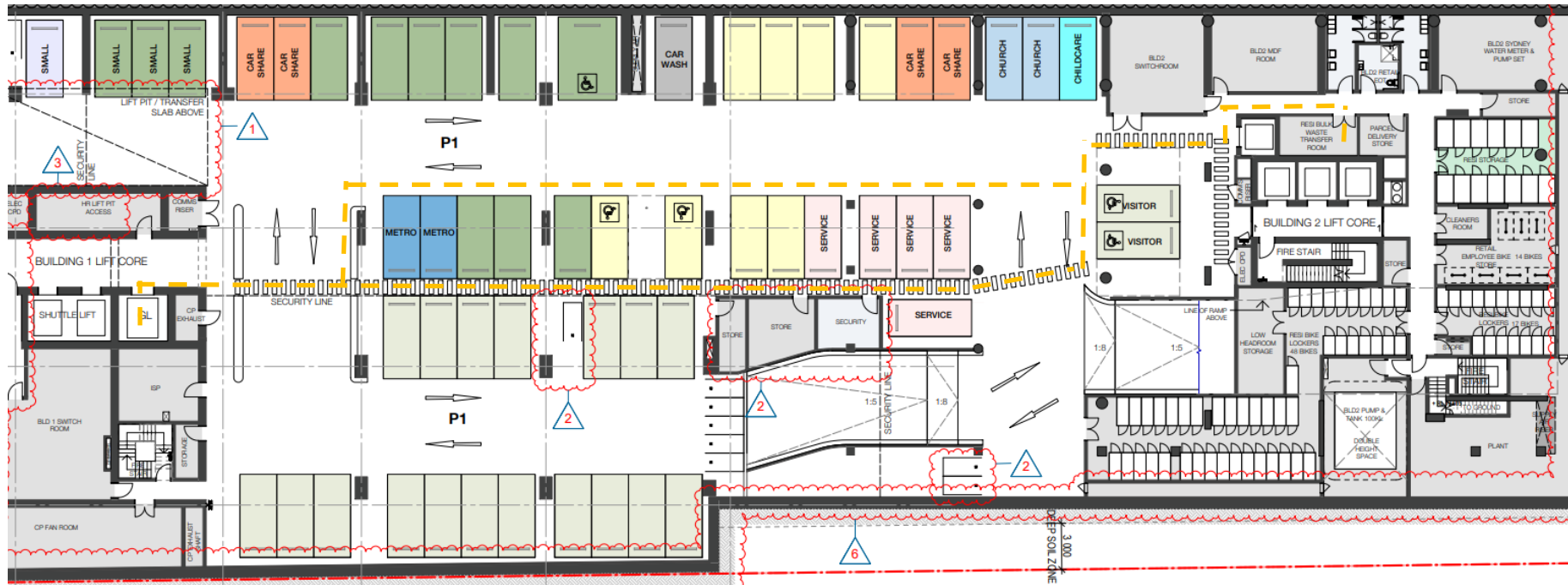
Key

- - Caging in the Residential Chute Discharge Room to allow approximately 8m² to store 13 x 240L food waste bins
- - Travel path residents will take to dispose of food waste directly into the food waste bins provided

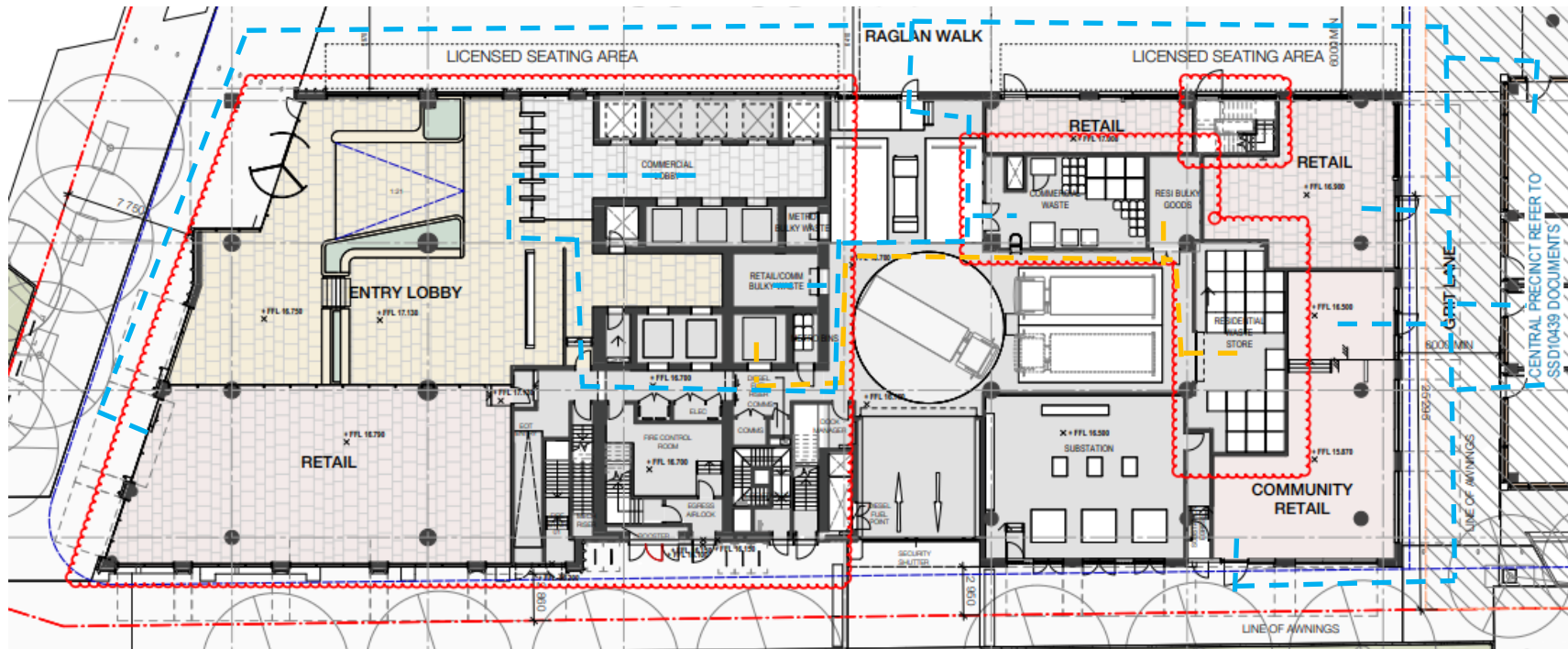
ATTACHMENT 2 – Travel Path Options of Residential Bins from the Chute Discharge Room (Basement 2) to the Loading Area (Ground)



ATTACHMENT 3 – Travel Path Options of Bulky Waste from the Bulky Waste Transfer Room (Basement 1) to the Loading Area (Ground)



ATTACHMENT 3 – Ground Level Travel Paths



Key

- - - Residential bin and bulky waste travel path
- - - Retail/Commercial staff travel path from each tenancy to the retail/commercial waste room and bulky waste room