



RWDI Australia Pty Ltd (RWDI) Tel: +61.2.9437.4611
272 Pacific Highway – Level 4 E-mail: solutions@rwdi.com
Crows Nest, NSW, Australia, 2065 ABN: 86 641 303 871

March 31, 2021

Project Number: 2102730-C
Reference: OWE INV31032021_BJM

Guy Smith
Goodman Property Services (Aust) Pty Limited
GPO Box 4703
Sydney NSW 2001
Email: Guy.Smith@goodman.com

Re: SSD10397 MOD 2, Oakdale West Stage 2 – S.4.55(1A) Application to modify architectural plans and Condition B8

Introduction

RWDI was commissioned by Goodman to undertake an acoustic review of the modifications of the SSD10397 MOD 2, Oakdale West Stage 2. The modifications proposed in SSD10397 include two solar inverter enclosures at Warehouse 2B and the fencing along building frontage to have a maximum height of 2.4m high rather than 2.1m high.

The solar inverters enclosures will be located on the north and south exterior side of warehouse 2B. The SE82.8K Three Phase Inverters is proposed to be installed at the warehouse. It is proposed 14 inverters will be installed on the north side of the warehouse and 15 on the on the south side.

The purpose of the review is to determine the noise impact from SSD10397 modification on surrounding receivers and provide any noise control recommendations, if required. The review takes into consideration two operational scenarios, this includes the operation of Warehouses 1A and 2B simultaneously and the operation of the whole Oakdale West Estate.

Noise Modelling

Operational noise emissions from the site have been predicted with a model prepared using the SoundPLAN V8.0 noise modelling software, implementing the CONCAWE prediction method. The model incorporates the OWE MOD 2 modifications and the additional inverters on the north and south side of Warehouse 2B. The Sound Pressure Level of the inverter is 60dBA at 1 metre.

The locations of the inverters are shown in Figures 1 to 3.

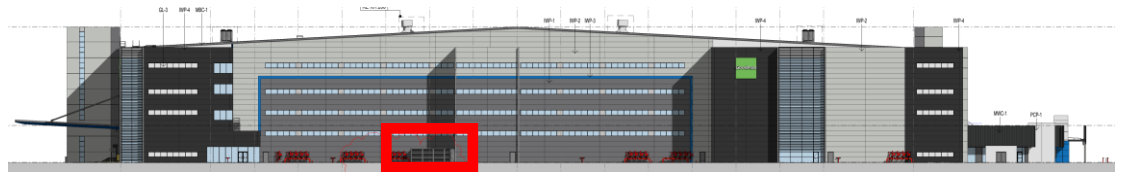


Figure 1 North elevation - location of inverters

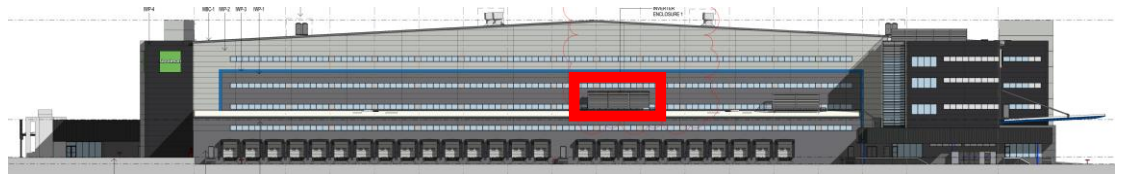


Figure 2 South elevation - location of inverters

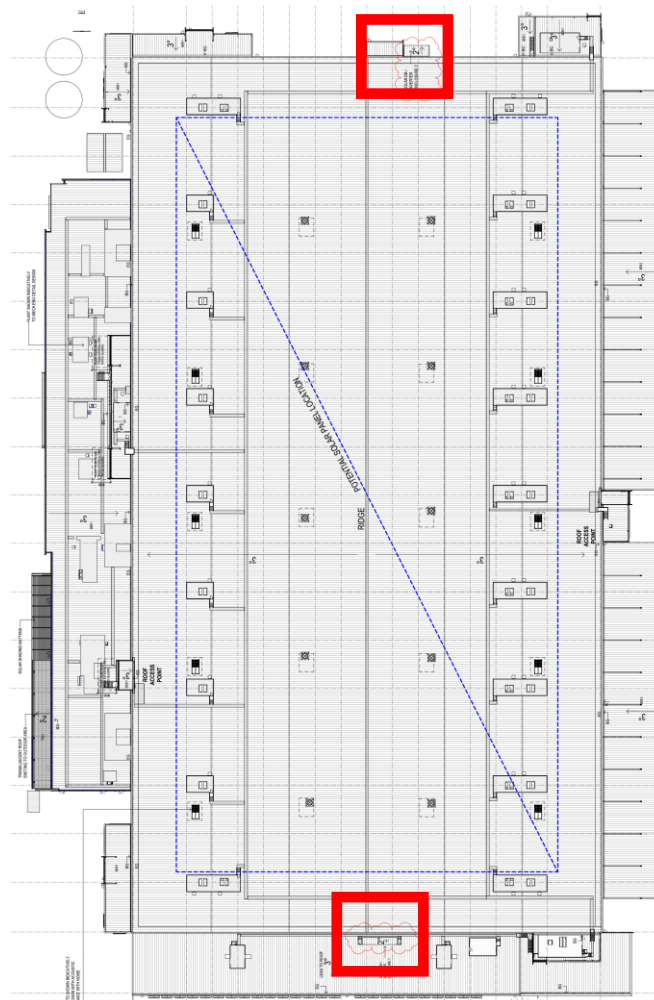


Figure 3 Location of inverters



Noise Assessment

The inverters were included in the Oakdale West Estate noise prediction model, including the Warehouses 1A and 2B operational scenario and the complete Oakdale West Estate operation scenario. The noise contribution from the inverters was not significant compared to other sources on site. There is no change to the predicted noise levels and results discussed in our previous report.

We trust this information is sufficient. Please contact us if you have any further queries.

Regards,

A handwritten signature in purple ink, appearing to read 'Brian Mendieta', with a large, stylized flourish at the end.

Brian Mendieta
Project Engineer
RWDI Australia Pty Ltd