



AGL Energy Limited

T 02 9921 2999

F 02 9921 2552

agl.com.au

ABN: 74 115 061 375

Level 24, 200 George St

Sydney NSW 2000

Locked Bag 1837

St Leonards NSW 2065

To Andrew McIntyre (TfNSW)
Subject Wellington North Solar Plant – Traffic analysis for powerline
Date 29/04/2020
From Jonathan Ambler

Andrew,

Following from our discussion yesterday, we have provided details below of the proposed access points for the transmission line construction for the Wellington North Solar Plant. This includes:

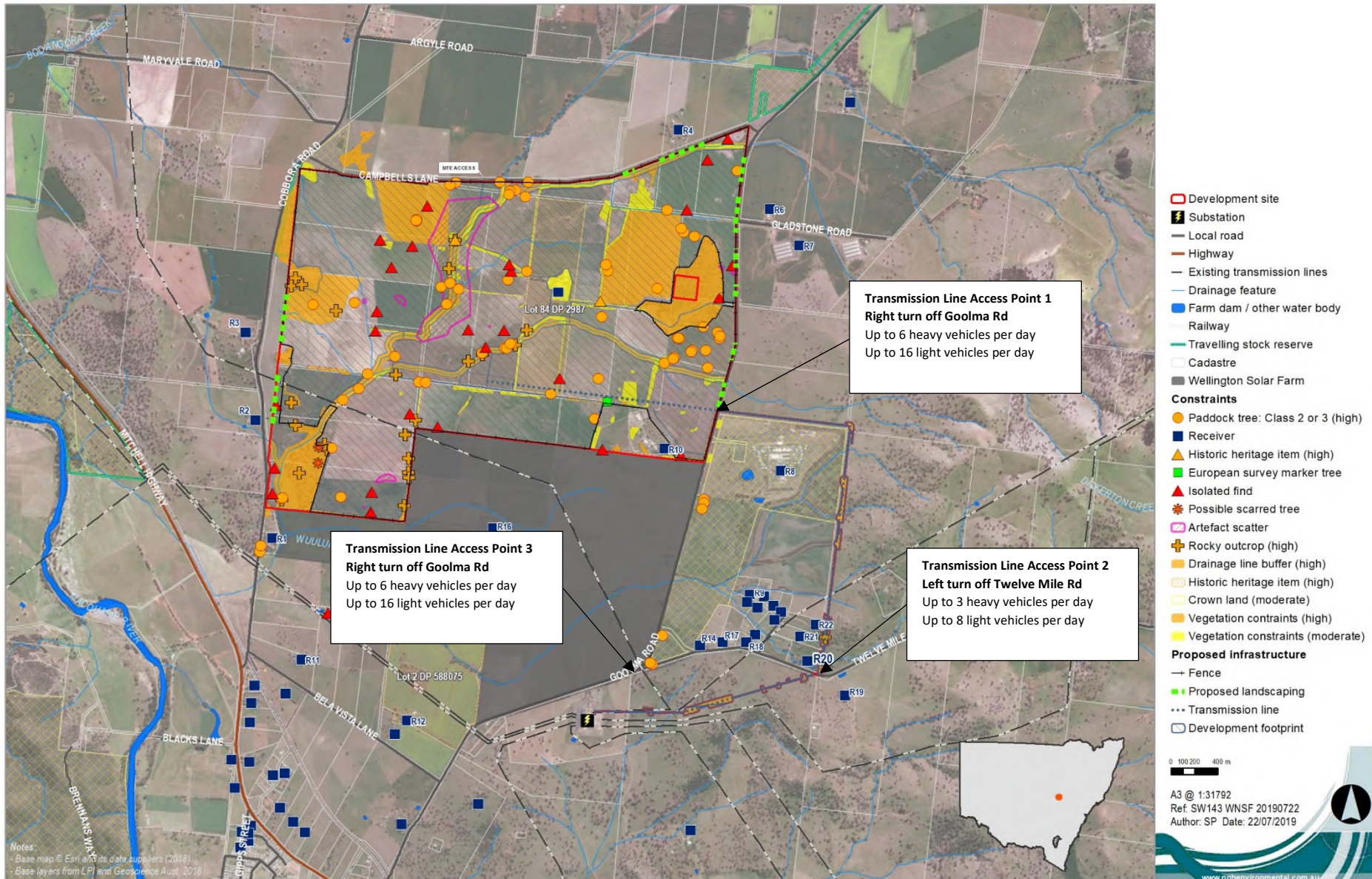
- Estimated daily vehicle numbers through each of the proposed access points,
- The transport route to each access point, and
- The access method (right or left turn)

Please let me know if this is sufficient to finalise an assessment of the traffic associated with the power line construction associated with the Wellington North Solar project.

As discussed, we would appreciate some flexibility to adjust these numbers following the completion of the Transport Management Plan (TMP), which we expect to be a condition of approval.

Regards,

Jon Ambler



Notes:
 - Base map © Esri and its data suppliers (2018)
 - Base layers from LPI and Geoscience Aust. 2018



AGL Energy Limited
T 02 9921 2999 Level 24, 200 George St
F 02 9921 2552 Sydney NSW 2000
agl.com.au Locked Bag 1837
ABN: 74 115 061 375 St Leonards NSW 2065

Transmission Line Access Point 1

Existing gated access.



Transmission Line Access Point 3

Existing access to landowner's property





Transport Route

AGL Energy Limited
T 02 9921 2999 Level 24, 200 George St
F 02 9921 2552 Sydney NSW 2000
agl.com.au Locked Bag 1837
ABN: 74 115 061 375 St Leonards NSW 2065

Transport of material and people to the transmission line during construction would be via the following roads (shown by the green line in the diagram below):

- Extension of the heavy vehicle transport route to the south along Cobbora Rd, along Bella Vista Lane, then along Goolma Rd, or
- Off Mitchell Highway (from either north or south direction) and along Goolma Rd to the access

