



EXTERIOR LEVELS TO HONEYSUCKLE DRIVE:
 Light grey hatch indicates continuation of paving type from footpath. Levels calculated from Northrop Civil Drawing CZ 2005. All finished levels interfacing with development to be C.O.S.

Check all dimensions and site conditions prior to commencement of any work, the purchase or ordering of any materials, fittings, plant, services or equipment and the preparation of shop drawings and or the fabrication of any components.
 Do not scale drawings - refer to figured dimensions only. Any discrepancies shall immediately be referred to the architect for clarification.
 All drawings may not be reproduced or distributed without prior permission from the architect.

Revision Notes:
 Refer to SK-101-SK-106 for comparison between previous layouts and proposed modification layouts

Revision	Date	Description	Initial	Checked
13	04/03/19	ISSUED FOR DA MODIFICATION	BS	DOMA
12	05/12/18	ISSUED FOR COORDINATION	JT	DE
11	24/10/18	ISSUED FOR COORDINATION	JT	DE
10	16/10/18	ISSUED FOR INFORMATION	JT	DE
9	12/09/18	ISSUED FOR COORDINATION	JT	DE
8	27/08/18	ISSUED FOR 80% TENDER	CQ	DE
7	03/08/18	ISSUED FOR 50% TENDER	CQ	DE
6	11/07/18	ISSUED FOR 30% TENDER	CQ	DE
5	02/07/18	ISSUED FOR COORDINATION	CQ	DE
4	13/06/18	ISSUED FOR COORDINATION	CQ	DE

NOT FOR CONSTRUCTION

42 Honeysuckle Drive 42 Honeysuckle Drive, Newcastle

General Arrangement Plan Ground Floor Plan

Status	DA MODIFICATION		
Scale	1 : 150	@	A1
Drawn	BS	Checked	DOMA
Project No.	s12109		
Plot Date	5/03/2019 3:07:25 PM		
Plot File	42HONEYSUCKLEDRIVE_ARCH		
Drawing no.	AD.03.101	Revision	13

Melbourne 1 Nicholson Street
 Melbourne VIC 3000 Australia
 T 03 8664 6200 F 03 8664 6300
 email mel@batesmart.com.au
 http://www.batesmart.com.au

Sydney 43 Brisbane Street
 Surry Hills NSW 2010 Australia
 T 02 8354 5100 F 02 8354 5199
 email syd@batesmart.com.au
 http://www.batesmart.com.au

Bates Smart Pty Ltd ABN 70 004 999 400



Check all dimensions and site conditions prior to commencement of any work, the purchase or ordering of any materials, fittings, plant, services or equipment and the preparation of shop drawings and or the fabrication of any components.

Do not scale drawings - refer to figured dimensions only. Any discrepancies shall immediately be referred to the architect for clarification.

All drawings may not be reproduced or distributed without prior permission from the architect.



Revision Notes:
Refer to SK.101-SK.106 for comparison between previous layouts and proposed modification layouts

Revision	Date	Description	Initial	Checked
11	04/03/19	ISSUED FOR DA MODIFICATION	BS	DOMA
10	24/01/18	ISSUED FOR COORDINATION	JT	DE
9	16/10/18	ISSUED FOR INFORMATION	JT	DE
8	27/08/18	ISSUED FOR 80% TENDER	CQ	DE
7	03/08/18	ISSUED FOR 50% TENDER	CQ	DE
6	11/07/18	ISSUED FOR 30% TENDER	CQ	DE
5	02/07/18	ISSUED FOR COORDINATION	CQ	DE
4	13/06/18	ISSUED FOR COORDINATION	CQ	DE
3	14/05/18	ISSUE FOR COORDINATION	CQ	DE
2	24/04/18	ISSUE FOR DA COMMENTS	CQ	DE

NOT FOR CONSTRUCTION

42 Honeyuckle Drive
42 Honeyuckle Drive,
Newcastle

General Arrangement Plan
Level 02

Status	DA MODIFICATION		
Scale	1 : 150	@	A1
Drawn	BS	Checked	DOMA
Project No.	s12109		
Plot Date	5/03/2019 3:08:54 PM		
Plot File	42HONEYUCKLEDRIVE_ARCH		
Drawing no.	AD.03.103	Revision	11

Melbourne 1 Nicholson Street
Melbourne VIC 3000 Australia
T 03 8664 6200 F 03 8664 6300
email mel@batesmart.com.au
http://www.batesmart.com.au

Sydney 43 Brisbane Street
Surry Hills NSW 2010 Australia
T 02 8354 5100 F 02 8354 5199
email syd@batesmart.com.au
http://www.batesmart.com.au

Bates Smart Pty Ltd ABN 70 004 999 400

BATESSMART

Check all dimensions and site conditions prior to commencement of any work, the purchase or ordering of any materials, fittings, plant, services or equipment and the preparation of shop drawings and or the fabrication of any components.

Do not scale drawings - refer to figured dimensions only. Any discrepancies shall immediately be referred to the architect for clarification.

All drawings may not be reproduced or distributed without prior permission from the architect.



Revision Notes:
Refer to SK.101-SK.106 for comparison between previous layouts and proposed modification layouts

Revision	Date	Description	Initial	Checked
11	04/03/19	ISSUED FOR DA MODIFICATION	BS	DOMA
10	24/01/18	ISSUED FOR COORDINATION	JT	DE
9	16/10/18	ISSUED FOR INFORMATION	JT	DE
8	27/08/18	ISSUED FOR 80% TENDER	CQ	DE
7	03/08/18	ISSUED FOR 50% TENDER	CQ	DE
6	11/07/18	ISSUED FOR 30% TENDER	CQ	DE
5	02/07/18	ISSUED FOR COORDINATION	CQ	DE
4	13/06/18	ISSUED FOR COORDINATION	CQ	DE
3	14/05/18	ISSUE FOR COORDINATION	CQ	DE
2	24/04/18	ISSUE FOR DA COMMENTS	CQ	DE

NOT FOR CONSTRUCTION

42 Honeyuckle Drive 42 Honeyuckle Drive, Newcastle

General Arrangement Plan Level 03

Status	DA MODIFICATION		
Scale	1 : 150	@	A1
Drawn	BS	Checked	DOMA
Project No.	s12109		
Plot Date	5/03/2019 3:09:44 PM		
Plot File	42HONEYUCKLEDRIE_ARCH		
Drawing no.	AD.03.104	Revision	11

Melbourne 1 Nicholson Street
Melbourne VIC 3000 Australia
T 03 8664 6200 F 03 8664 6300
email mel@batesmart.com.au
http://www.batesmart.com.au

Sydney 43 Brisbane Street
Surry Hills NSW 2010 Australia
T 02 8354 5100 F 02 8354 5199
email syd@batesmart.com.au
http://www.batesmart.com.au

Bates Smart Pty Ltd ABN 70 004 999 400



Check all dimensions and site conditions prior to commencement of any work, the purchase or ordering of any materials, fittings, plant, services or equipment and the preparation of shop drawings and or the fabrication of any components.

Do not scale drawings - refer to figured dimensions only. Any discrepancies shall immediately be referred to the architect for clarification.

All drawings may not be reproduced or distributed without prior permission from the architect.



Revision Notes:
Refer to SK.101-SK.106 for comparison between previous layouts and proposed modification layouts

Revision	Date	Description	Initial	Checked
11	04/03/19	ISSUED FOR DA MODIFICATION	BS	DOMA
10	24/10/18	ISSUED FOR COORDINATION	JT	DE
9	16/10/18	ISSUED FOR INFORMATION	JT	DE
8	27/08/18	ISSUED FOR 80% TENDER	CQ	DE
7	03/08/18	ISSUED FOR 50% TENDER	CQ	DE
6	11/07/18	ISSUED FOR 30% TENDER	CQ	DE
5	02/07/18	ISSUED FOR COORDINATION	CQ	DE
4	13/06/18	ISSUED FOR COORDINATION	CQ	DE
3	14/05/18	ISSUE FOR COORDINATION	CQ	DE
2	24/04/18	ISSUE FOR DA COMMENTS	CQ	DE

NOT FOR CONSTRUCTION

42 Honeyuckle Drive
42 Honeyuckle Drive,
Newcastle

General Arrangement Plan
Level 04

Status	DA MODIFICATION
Scale	1 : 150 @ A1
Drawn	BS Checked DOMA
Project No.	s12109
Plot Date	5/03/2019 3:10:28 PM
Plot File	42HONEYUCKLEDRIVE_ARCH
Drawing no.	AD.03.105
Revision	11

Melbourne 1 Nicholson Street
Melbourne VIC 3000 Australia
T 03 8664 6200 F 03 8664 6300
email mel@batesmart.com.au
http://www.batesmart.com.au

Sydney 43 Brisbane Street
Surry Hills NSW 2010 Australia
T 02 8354 5100 F 02 8354 5199
email syd@batesmart.com.au
http://www.batesmart.com.au

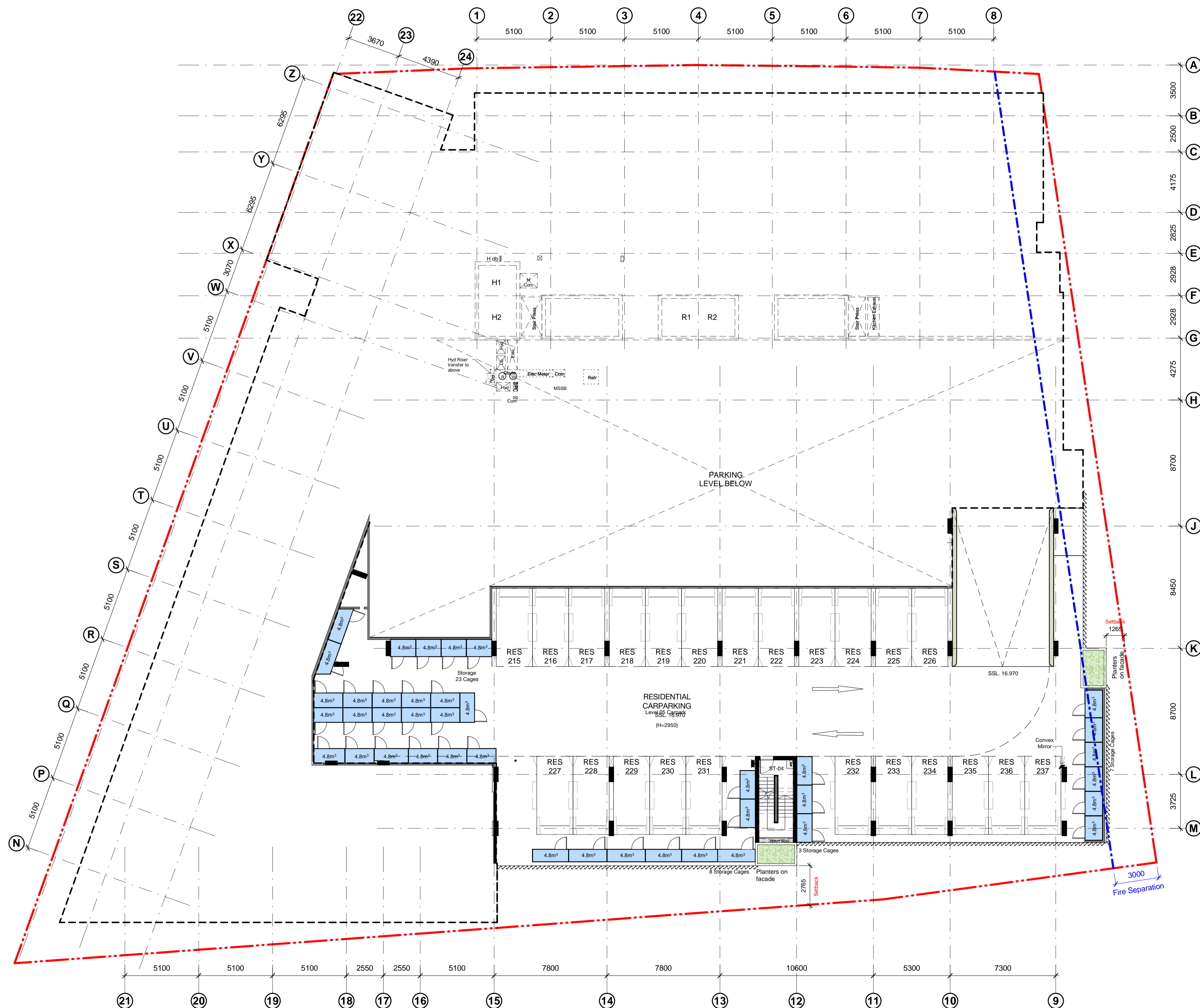
Bates Smart Pty Ltd ABN 70 004 999 400

BATESSMART

Check all dimensions and site conditions prior to commencement of any work, the purchase or ordering of any materials, fittings, plant, services or equipment and the preparation of shop drawings and/or the fabrication of any components.

Do not scale drawings - refer to figured dimensions only. Any discrepancies shall immediately be referred to the architect for clarification.

All drawings may not be reproduced or distributed without prior permission from the architect.



Revision Notes:
Refer to SK.101-SK.106 for comparison between previous layouts and proposed modification layouts

Revision	Date	Description	Initial	Checked
10	04/03/19	ISSUED FOR DA MODIFICATION	BS	DOMA
9	24/10/18	ISSUED FOR COORDINATION	JT	DE
8	27/08/18	ISSUED FOR 80% TENDER	CO	DE
7	03/08/18	ISSUED FOR 50% TENDER	CO	DE
6	11/07/18	ISSUED FOR 30% TENDER	CO	DE
5	02/07/18	ISSUED FOR COORDINATION	CO	DE
4	13/06/18	ISSUED FOR COORDINATION	CO	DE
3	14/05/18	ISSUE FOR COORDINATION	CO	DE
2	24/04/18	ISSUE FOR DA COMMENTS	CO	DE
1	12/03/18	ISSUE FOR COORDINATION	CO	DE

NOT FOR CONSTRUCTION

**42 Honeyuckle Drive,
42 Honeyuckle Drive,
Newcastle**

**General Arrangement Plan
Level 05 Parking**

Status	DA MODIFICATION		
Scale	1 : 150	@	A1
Drawn	BS	Checked	DOMA
Project No.	s12109		
Plot Date	5/03/2019 3:11:06 PM		
Plot File	42HONEYUCKLEDRIE_ARCH		
Drawing no.	AD.03.106	Revision	10

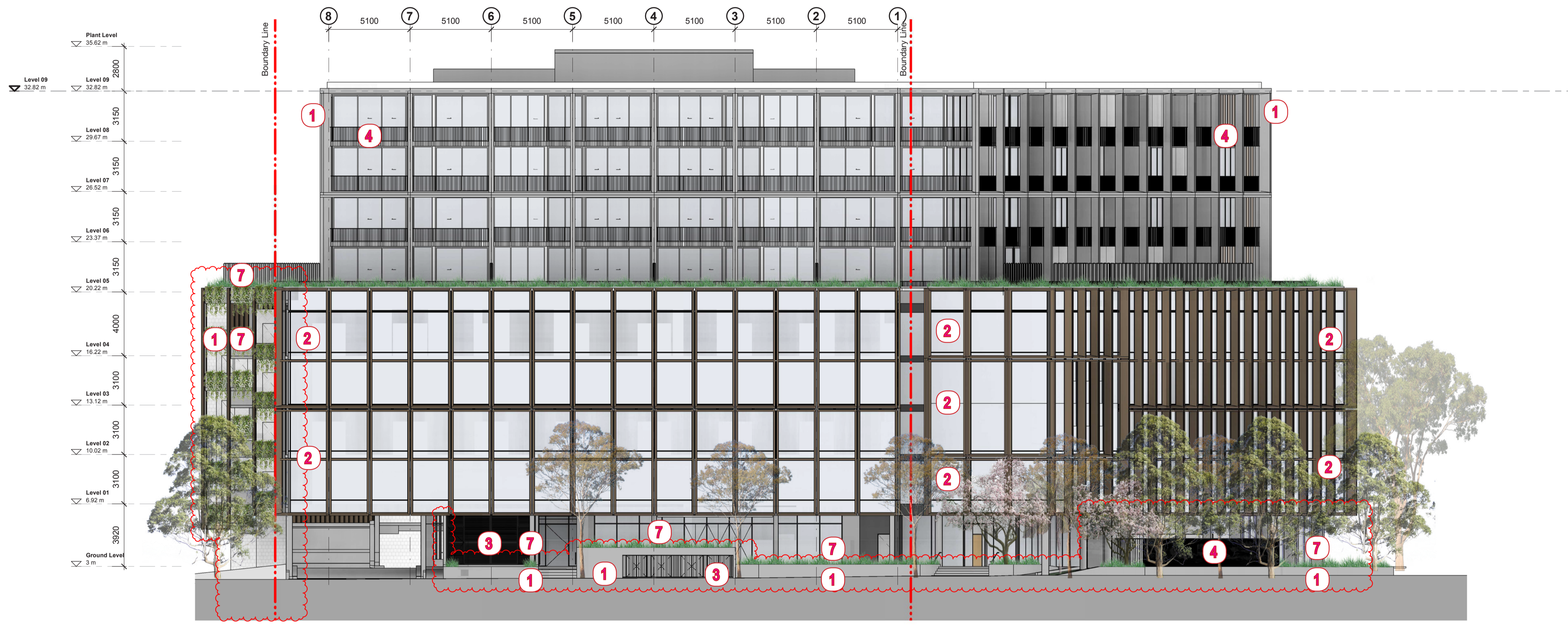
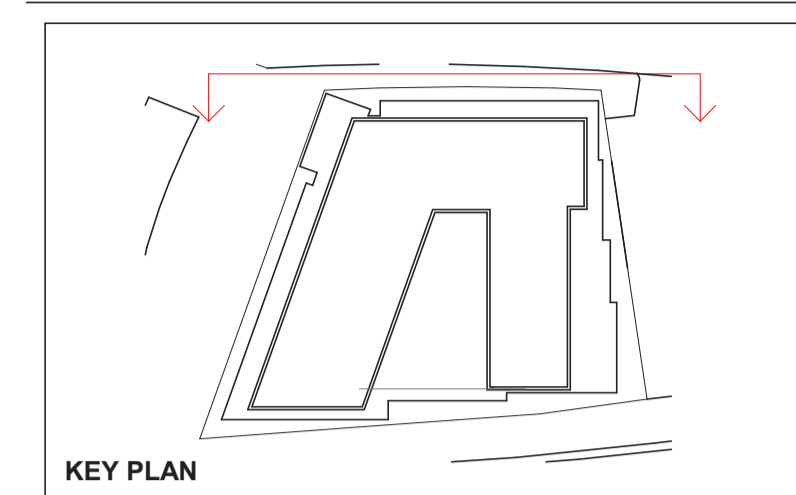
Melbourne 1 Nicholson Street
Melbourne VIC 3000 Australia
T 03 8664 6200 F 03 8664 6300
email mel@batesmart.com.au
http://www.batesmart.com.au

Sydney 43 Brisbane Street
Surry Hills NSW 2010 Australia
T 02 8354 5100 F 02 8354 5199
email syd@batesmart.com.au
http://www.batesmart.com.au

Bates Smart Pty Ltd ABN 70 004 999 400

BATESSMART

Check all dimensions and site conditions prior to commencement of any work, the purchase or ordering of any materials, fittings, plant, services or equipment and the preparation of shop drawings and or the fabrication of any components.
 Do not scale drawings - refer to figured dimensions only. Any discrepancies shall immediately be referred to the architect for clarification.
 All drawings may not be reproduced or distributed without prior permission from the architect.



Revision	Date	Description	Initial	Checked
8	04/03/19	ISSUED FOR DA MODIFICATION	BS	DOMA
7	16/10/18	ISSUED FOR INFORMATION	JT	DE
6	27/08/18	ISSUED FOR 80% TENDER	CQ	DE
5	03/08/18	ISSUED FOR 80% TENDER	CQ	DE
4	11/07/18	ISSUED FOR 30% TENDER	CQ	DE
3	14/06/18	ISSUED FOR INFORMATION	CQ	DE
2	14/05/18	ISSUE FOR COORDINATION	CQ	DE
1	24/04/18	ISSUE FOR DA COMMENTS	CQ	DE

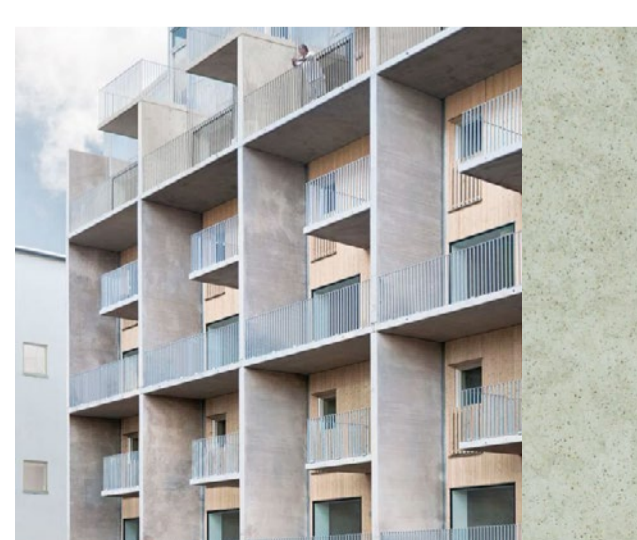
1 Elevation
 North Elevation
 1 : 150

42 Honeysuckle Drive
 42 Honeysuckle Drive,
 Newcastle

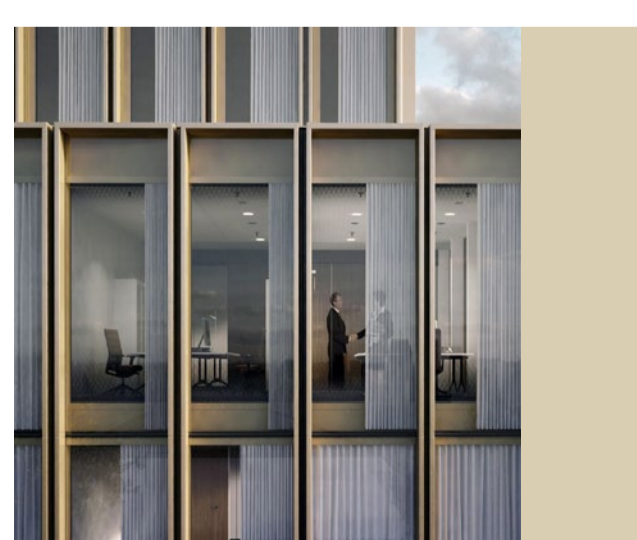
Building Elevations
 North Elevation



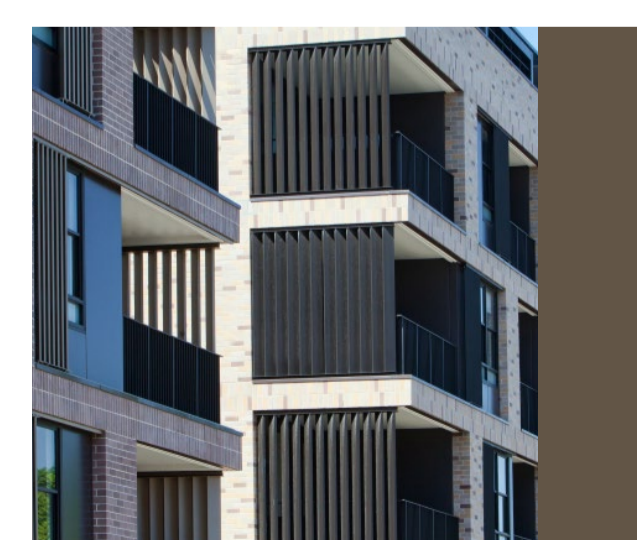
Status	DA MODIFICATION		
Scale	1 : 150	@	A1
Drawn	BS	Checked	DOMA
Project No.	s12109		
Plot Date	5/03/2019 3:12:39 PM		
Plot File	42HONEYSUCKLEDRIE_ARCH		
Drawing no.	AD.09.001	Revision	8



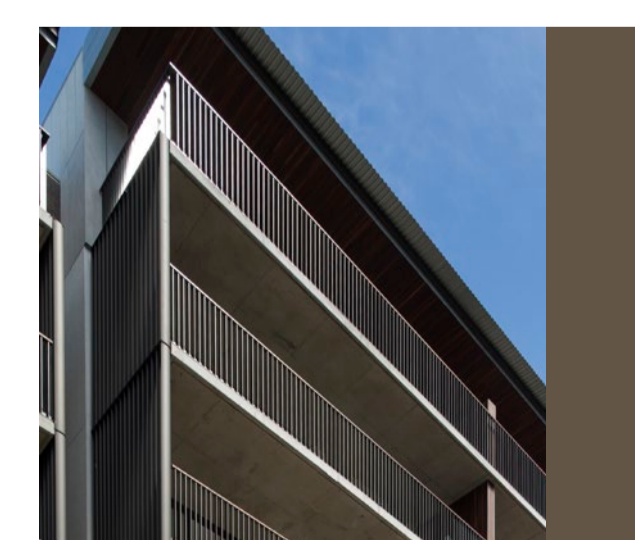
1 - CONCRETE FINISH



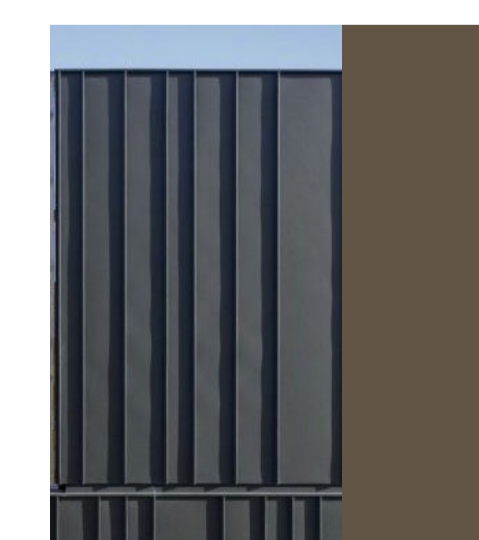
2 - ALUMINIUM FINNS & SHADOW BOX SPANDRELS



3 - ALUMINIUM LOUVRES



4 - ALUMINIUM BALUSTRADES



5 - ALUMINIUM PANELS



6 - LOUVRES - CAR PARK



7 - PLANTERS



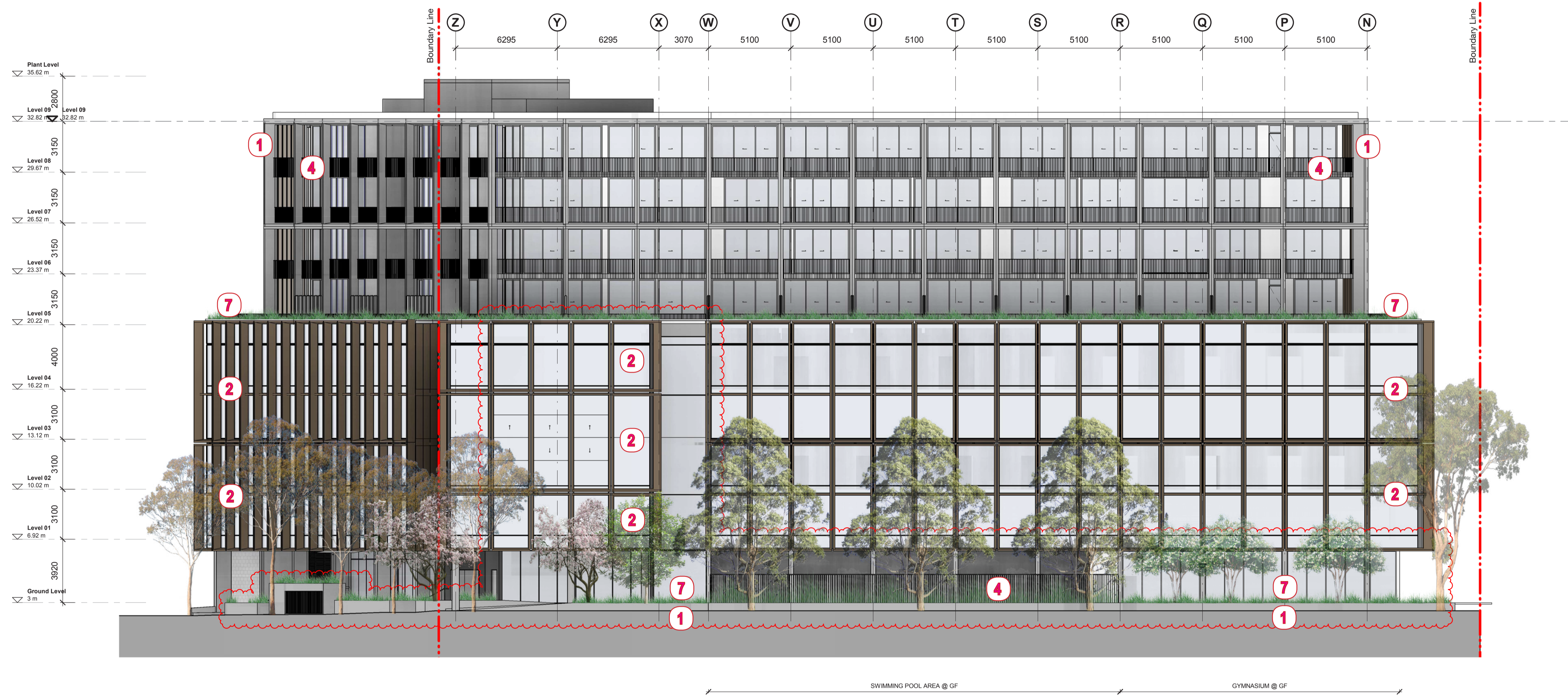
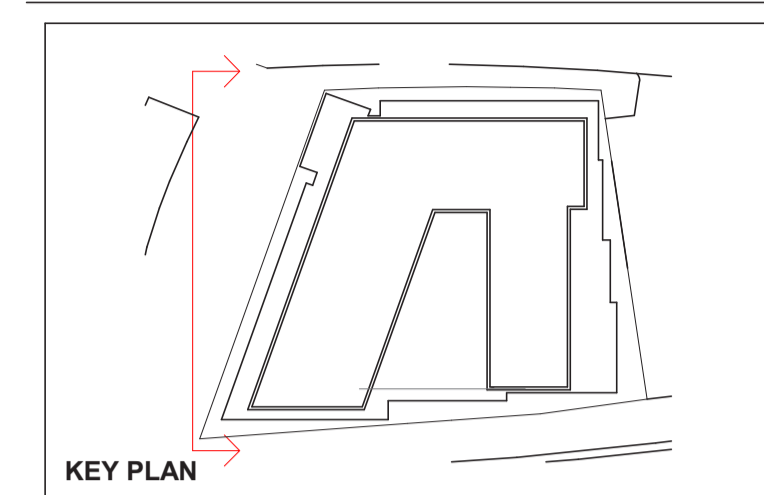
8 - FEATURE BLOCKWORK

Melbourne 1 Nicholson Street
 Melbourne VIC 3000 Australia
 T 03 8664 6200 F 03 8664 6300
 email mel@batesmart.com.au
 http://www.batesmart.com.au

Sydney 43 Brisbane Street
 Surry Hills NSW 2010 Australia
 T 02 8354 5100 F 02 8354 5199
 email syd@batesmart.com.au
 http://www.batesmart.com.au

Bates Smart Pty Ltd ABN 70 004 999 400

Check all dimensions and site conditions prior to commencement of any work, the purchase or ordering of any materials, fittings, plant, services or equipment and the preparation of shop drawings and or the fabrication of any components.
Do not scale drawings - refer to figured dimensions only. Any discrepancies shall immediately be referred to the architect for clarification.
All drawings may not be reproduced or distributed without prior permission from the architect.



Revision	Date	Description	Initial	Checked
8	04/03/19	ISSUED FOR DA MODIFICATION	BS	DOMA
7	16/10/18	ISSUED FOR INFORMATION	JT	DE
6	27/08/18	ISSUED FOR 80% TENDER	CQ	DE
5	03/08/18	ISSUED FOR 80% TENDER	CQ	DE
4	11/07/18	ISSUED FOR 30% TENDER	CQ	DE
3	14/06/18	ISSUED FOR INFORMATION	CQ	DE
2	14/05/18	ISSUE FOR COORDINATION	CQ	DE
1	24/04/18	ISSUE FOR DA COMMENTS	CQ	DE

42 Honeysuckle Drive
42 Honeysuckle Drive,
Newcastle

Building Elevations
West Elevation



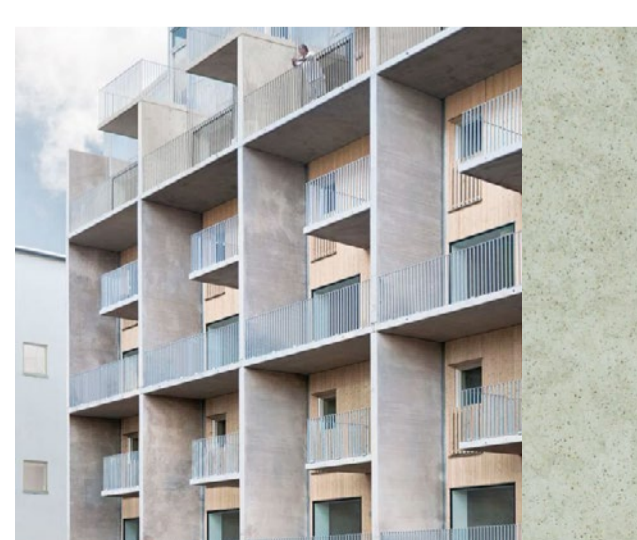
Status	DA MODIFICATION		
Scale	1 : 150	@	A1
Drawn	BS	Checked	DOMA
Project No.	s12109		
Plot Date	5/03/2019 3:14:22 PM		
Plot File	42HONEYSUCKLEDRIE_ARCH		
Drawing no.	AD.09.002	Revision	8

Melbourne 1 Nicholson Street
Melbourne VIC 3000 Australia
T 03 8664 6200 F 03 8664 6300
email mel@batesmart.com.au
http://www.batesmart.com.au

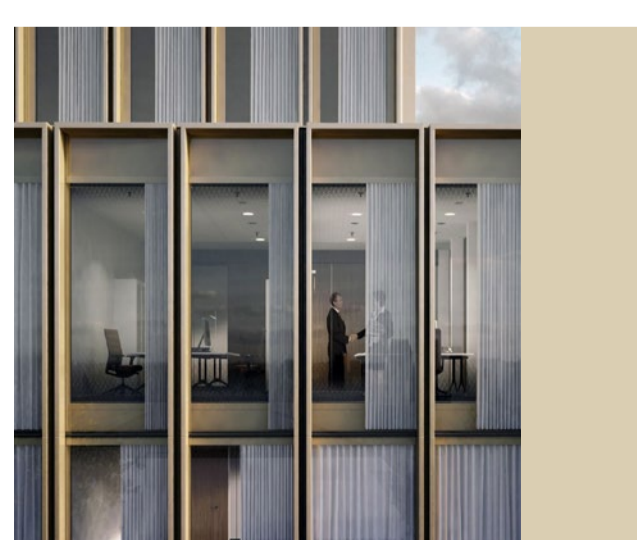
Sydney 43 Brisbane Street
Surry Hills NSW 2010 Australia
T 02 8354 5100 F 02 8354 5199
email syd@batesmart.com.au
http://www.batesmart.com.au

Bates Smart Pty Ltd ABN 70 004 999 400

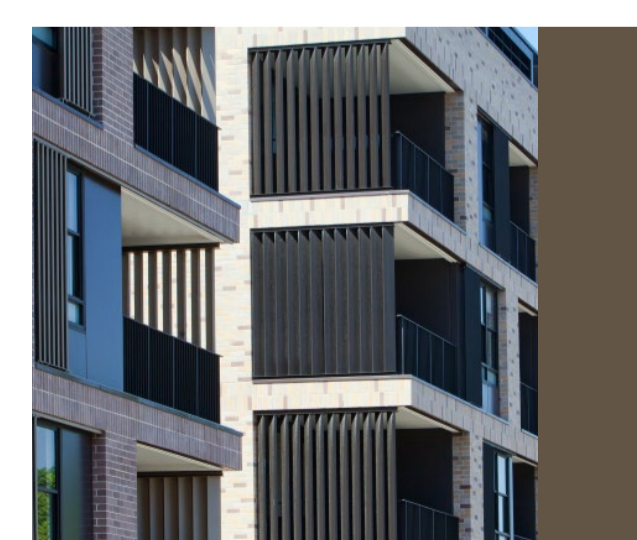
1 Elevation
West Elevation 1 : 150



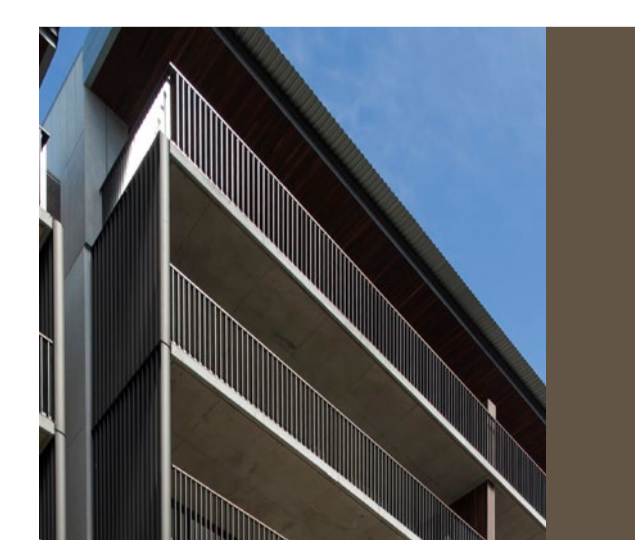
1 - CONCRETE FINISH



2 - ALUMINIUM FINS & SHADOW BOX SPANDRELS



3 - ALUMINIUM LOUVRES



4 - ALUMINIUM BALUSTRADES



5 - ALUMINIUM PANELS



6 - LOUVRES - CAR PARK

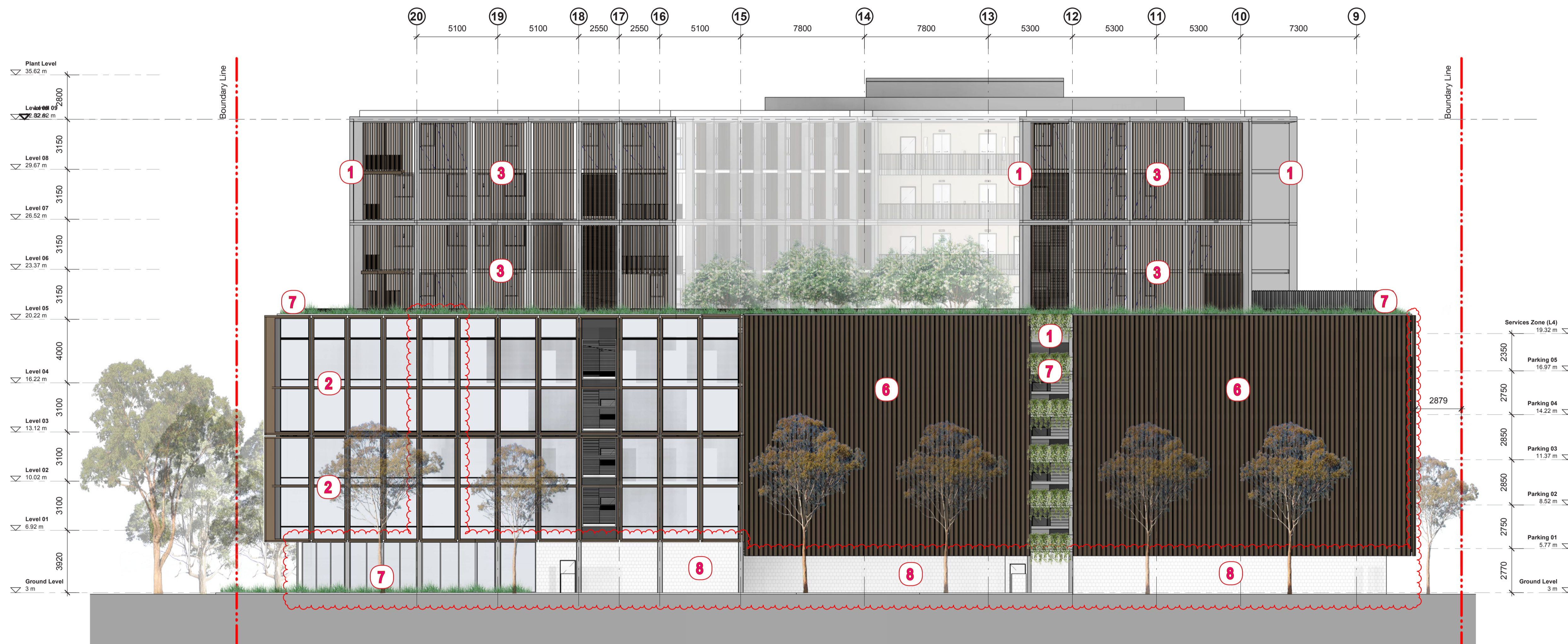
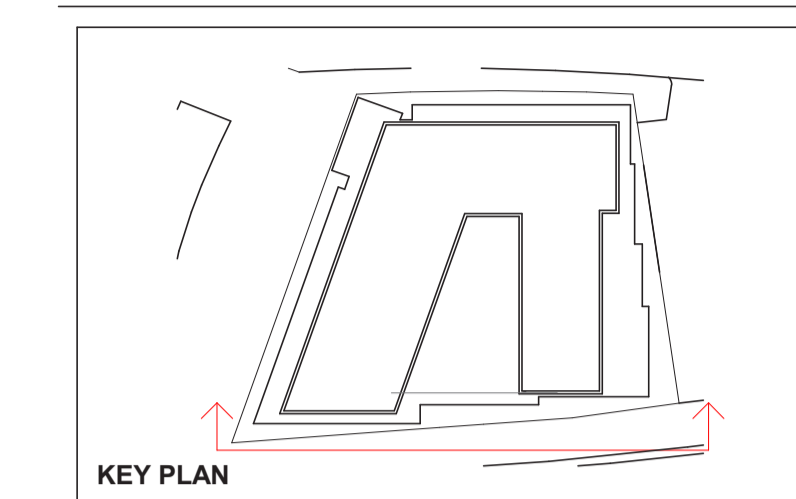


7 - PLANTERS



8 - FEATURE BLOCKWORK

Check all dimensions and site conditions prior to commencement of any work, the purchase or ordering of any materials, fittings, plant, services or equipment and the preparation of shop drawings and or the fabrication of any components.
Do not scale drawings - refer to figured dimensions only. Any discrepancies shall immediately be referred to the architect for clarification.
All drawings may not be reproduced or distributed without prior permission from the architect.



1 Elevation
South Elevation
1 : 150

Revision	Date	Description	Initial	Checked
8	04/03/19	ISSUED FOR DA MODIFICATION	BS	DOMA
7	16/10/18	ISSUED FOR INFORMATION	JT	DE
6	27/08/18	ISSUED FOR 80% TENDER	CQ	DE
5	03/08/18	ISSUED FOR 80% TENDER	CQ	DE
4	11/07/18	ISSUED FOR 30% TENDER	CQ	DE
3	14/06/18	ISSUED FOR INFORMATION	CQ	DE
2	14/05/18	ISSUED FOR COORDINATION	CQ	DE
1	24/04/18	ISSUE FOR DA COMMENTS	CQ	DE

42 Honeysuckle Drive
42 Honeysuckle Drive,
Newcastle

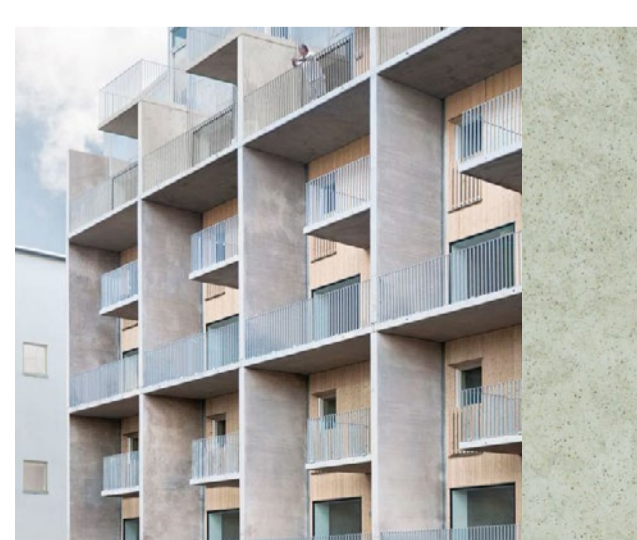
Building Elevations
South Elevation

Status	DA MODIFICATION		
Scale	1 : 150	@	A1
Drawn	BS	Checked	DOMA
Project No.	s12109		
Plot Date	5/03/2019 3:15:29 PM		
Plot File	42HONEYSUCKLEDRIE_ARCH		
Drawing no.	AD.09.003		Revision
			8

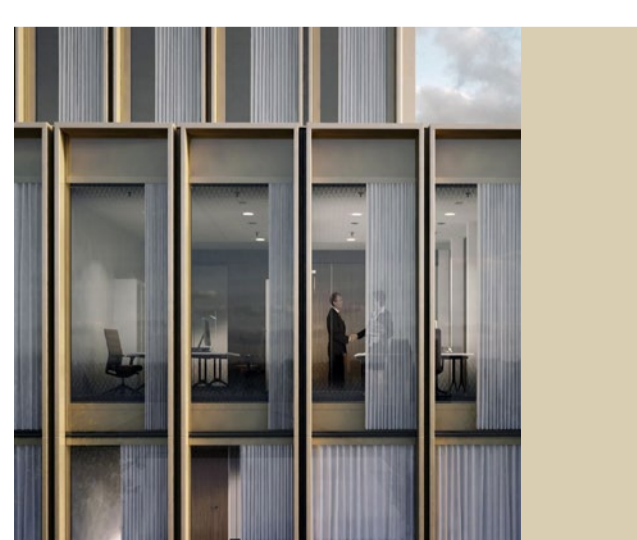
Melbourne 1 Nicholson Street
Melbourne VIC 3000 Australia
T 03 8664 6200 F 03 8664 6300
email mel@batesmart.com.au
http://www.batesmart.com.au

Sydney 43 Brisbane Street
Surry Hills NSW 2010 Australia
T 02 8354 5100 F 02 8354 5199
email syd@batesmart.com.au
http://www.batesmart.com.au

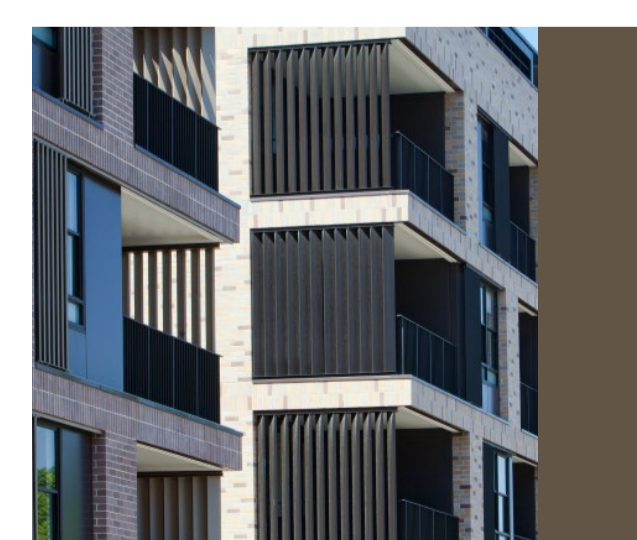
Bates Smart Pty Ltd ABN 70 004 999 400



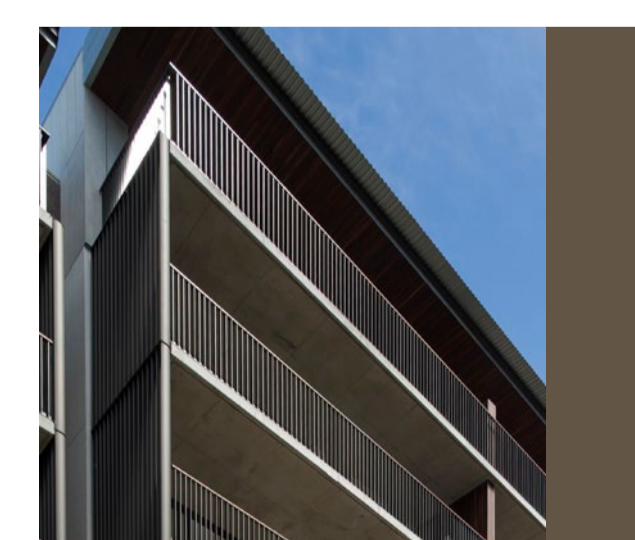
1 - CONCRETE FINISH



2 - ALUMINIUM FINS & SHADOW BOX SPANDRELS



3 - ALUMINIUM LOUVRES



4 - ALUMINIUM BALUSTRADES



5 - ALUMINIUM PANELS



6 - LOUVRES - CAR PARK

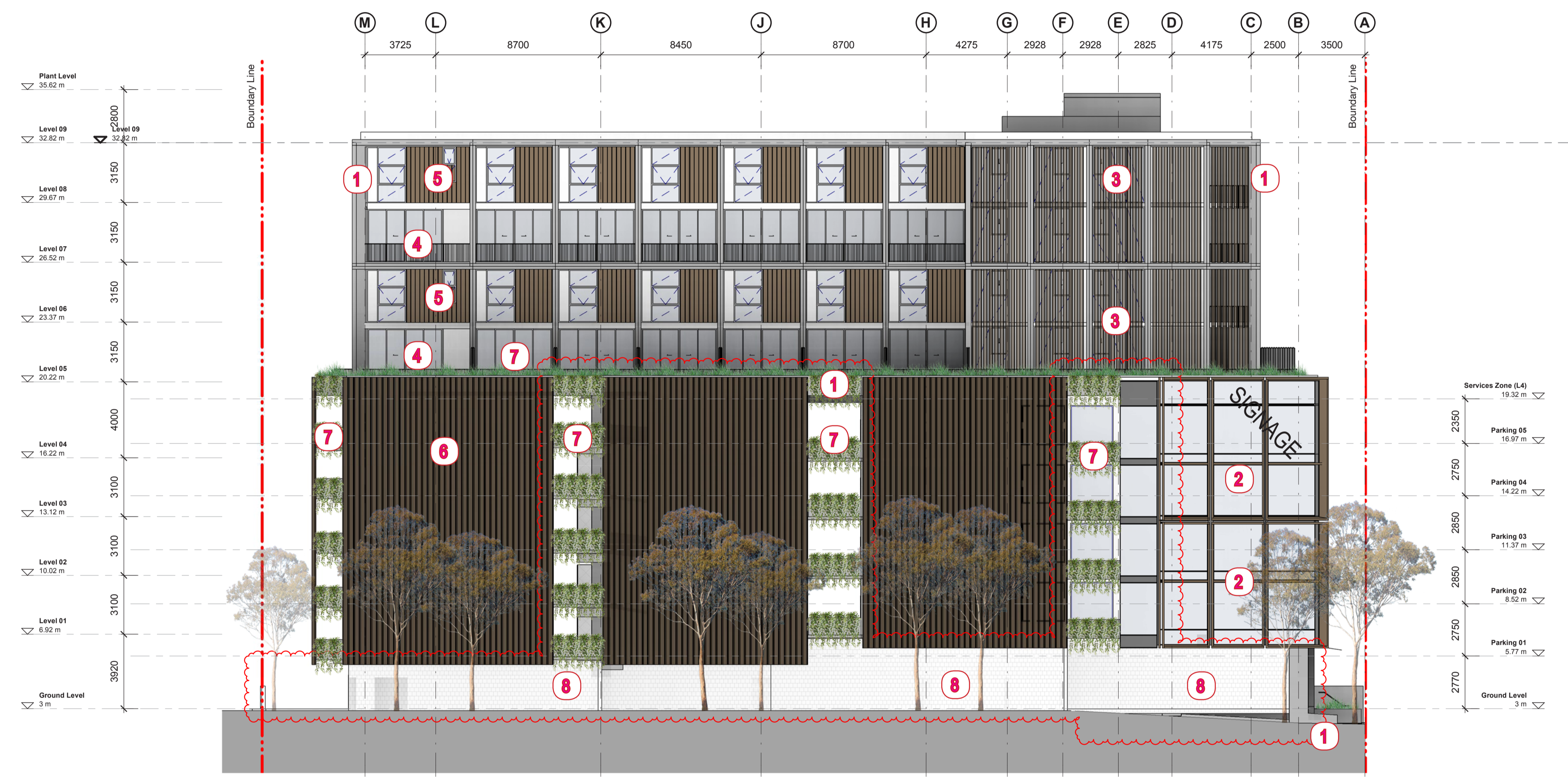
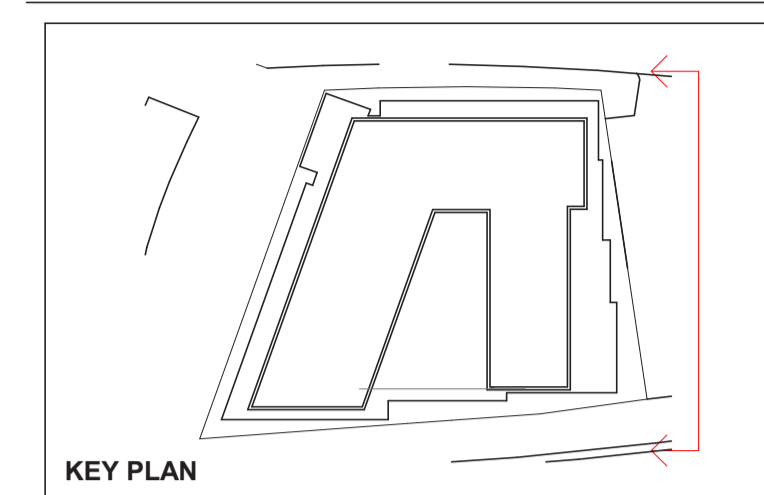


7 - PLANTERS



8 - FEATURE BLOCKWORK

Check all dimensions and site conditions prior to commencement of any work, the purchase or ordering of any materials, fittings, plant, services or equipment and the preparation of shop drawings and or the fabrication of any components.
Do not scale drawings - refer to figured dimensions only. Any discrepancies shall immediately be referred to the architect for clarification.
All drawings may not be reproduced or distributed without prior permission from the architect.



1 Elevation
East Elevation
1 : 150

Revision	Date	Description	Initial	Checked
8	04/03/19	ISSUED FOR DA MODIFICATION	BS	DOMA
7	16/10/18	ISSUED FOR INFORMATION	JT	DE
6	27/08/18	ISSUED FOR 80% TENDER	CQ	DE
5	03/08/18	ISSUED FOR 80% TENDER	CQ	DE
4	11/07/18	ISSUED FOR 30% TENDER	CQ	DE
3	14/06/18	ISSUED FOR INFORMATION	CQ	DE
2	14/05/18	ISSUE FOR COORDINATION	CQ	DE
1	24/04/18	ISSUE FOR DA COMMENTS	CQ	DE

42 Honeysuckle Drive
42 Honeysuckle Drive,
Newcastle

Building Elevations
East Elevation

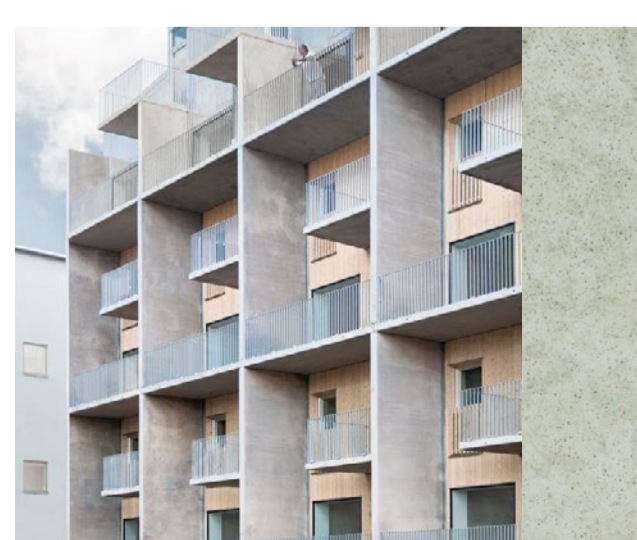


Status	DA MODIFICATION		
Scale	1 : 150	@	A1
Drawn	BS	Checked	DOMA
Project No.	s12109		
Plot Date	5/03/2019 3:16:04 PM		
Plot File	42HONEYSUCKLEDRIE_ARCH		
Drawn no.	AD.09.004	Revision	8

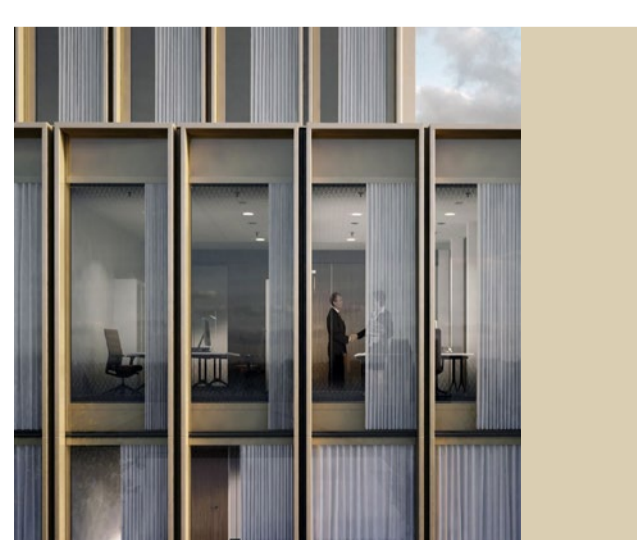
Melbourne 1 Nicholson Street
Melbourne VIC 3000 Australia
T 03 8664 6200 F 03 8664 6300
email mel@batesmart.com.au
http://www.batesmart.com.au

Sydney 43 Brisbane Street
Surry Hills NSW 2010 Australia
T 02 8354 5100 F 02 8354 5199
email syd@batesmart.com.au
http://www.batesmart.com.au

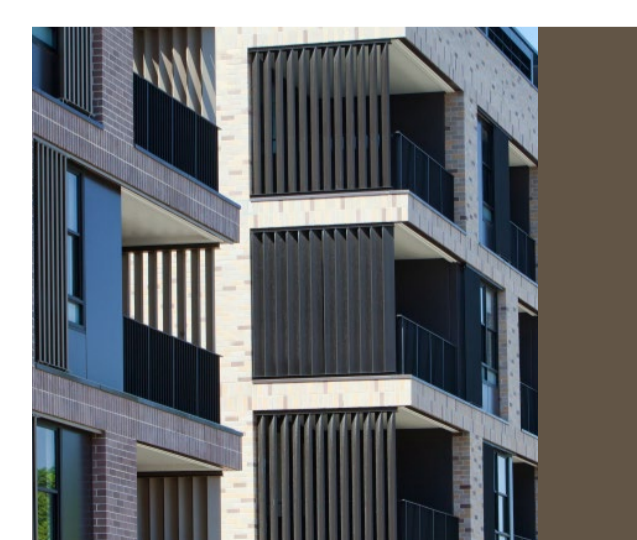
Bates Smart Pty Ltd ABN 70 004 999 400



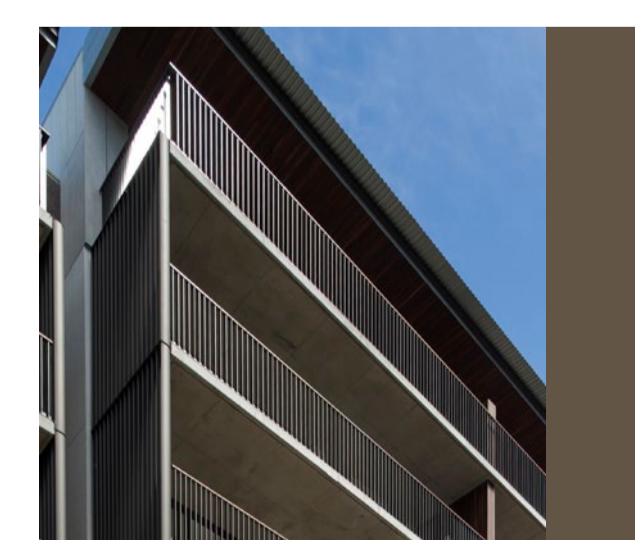
1 - CONCRETE FINISH



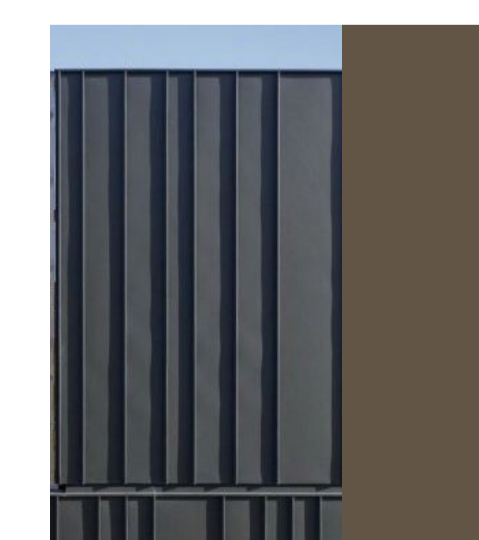
2 - ALUMINIUM FINS & SHADOW BOX SPANDRELS



3 - ALUMINIUM LOUVRES



4 - ALUMINIUM BALUSTRADES



5 - ALUMINIUM PANELS



6 - LOUVRES - CAR PARK



7 - PLANTERS

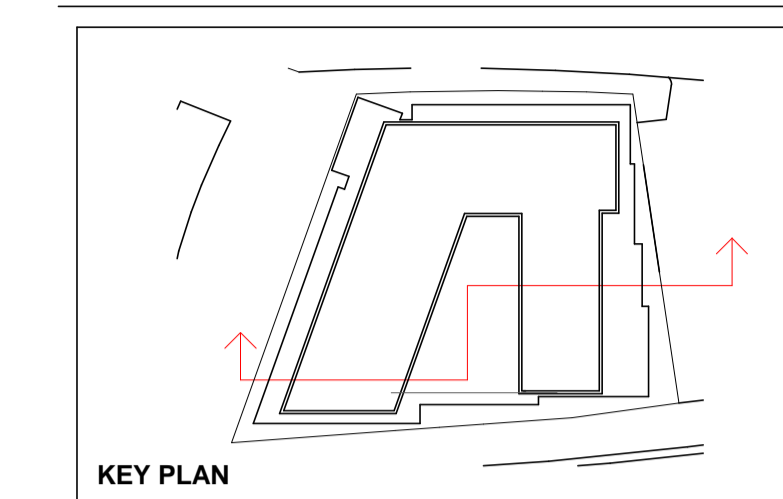


8 - FEATURE BLOCKWORK

Check all dimensions and site conditions prior to commencement of any work, the purchase or ordering of any materials, fittings, plant, services or equipment and the preparation of shop drawings and or the fabrication of any components.

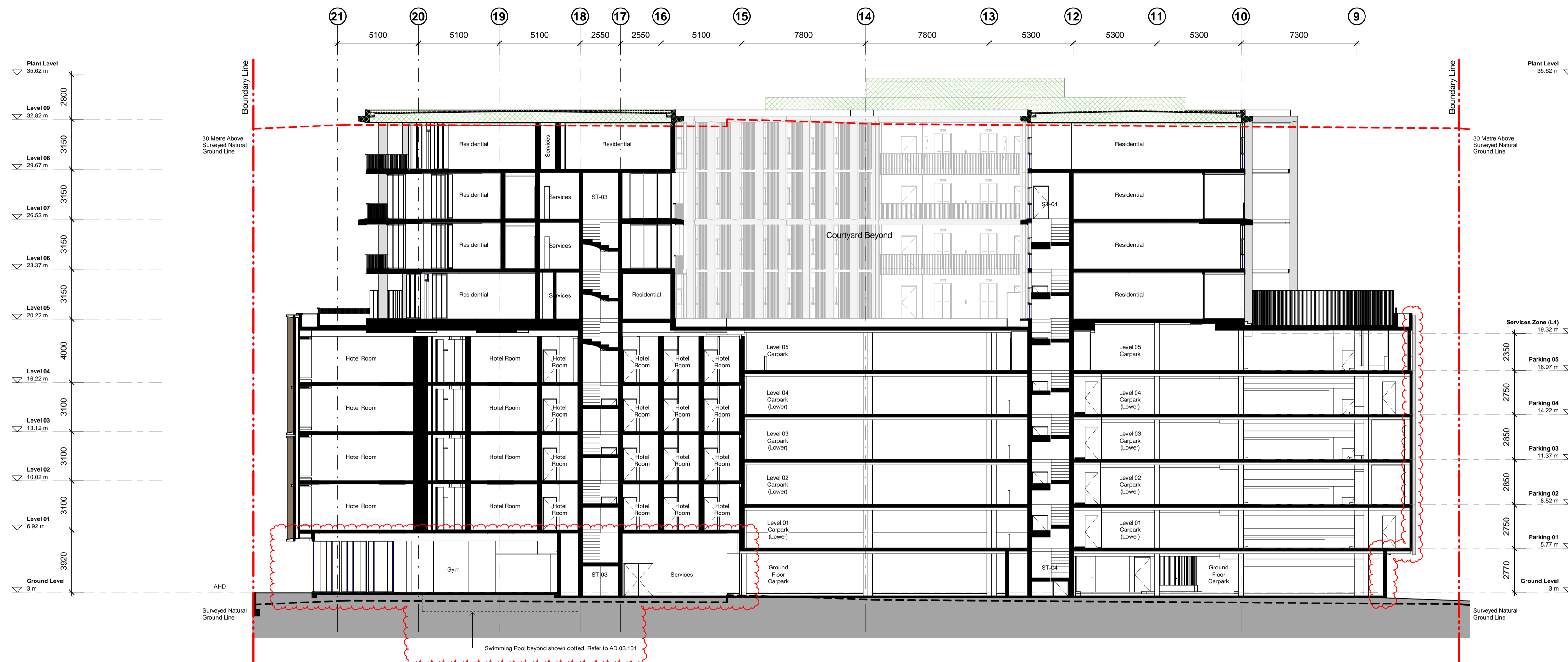
Do not scale drawings - refer to figured dimensions only. Any discrepancies shall immediately be referred to the architect for clarification.

All drawings may not be reproduced or distributed without prior permission from the architect.



Note

Green hatched zone denotes extents above 30 Metre Natural Ground Line survey.



1 Section
Section East-West
1 : 150

Revision	Date	Description	Initial	Checked
6	04/03/19	ISSUED FOR DA MODIFICATION	BS	DOMA
5	27/08/18	ISSUED FOR 80% TENDER	CQ	DE
4	03/08/18	ISSUED FOR 50% TENDER	CQ	DE
3	11/07/18	ISSUED FOR 30% TENDER	CQ	DE
2	14/06/18	ISSUED FOR INFORMATION	CQ	DE
1	24/04/18	ISSUE FOR DA COMMENTS	CQ	DE

42 Honeysuckle Drive
42 Honeysuckle Drive,
Newcastle

Building Sections
Section - East-West



Status	DA MODIFICATION		
Scale	As indicated	@	A1
Drawn	BS	Checked	DOMA
Project No.	s12109		
Plot Date	5/03/2019 3:16:34 PM		
Plot File	42HONEYSUCKLEDRIE_ARCH		
Drawing no.	AD.10.001	Revision	6

Melbourne 1 Nicholson Street
Melbourne VIC 3000 Australia
T 03 8664 6200 F 03 8664 6300
email mel@batesmart.com.au
http://www.batesmart.com.au

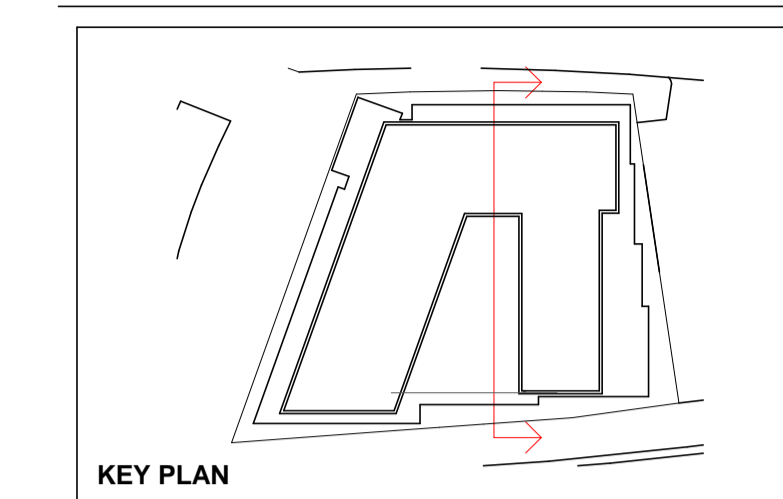
Sydney 43 Brisbane Street
Surry Hills NSW 2010 Australia
T 02 8354 5100 F 02 8354 5199
email syd@batesmart.com.au
http://www.batesmart.com.au

Bates Smart Pty Ltd ABN 70 004 999 400

Check all dimensions and site conditions prior to commencement of any work, the purchase or ordering of any materials, fittings, plant, services or equipment and the preparation of shop drawings and or the fabrication of any components.

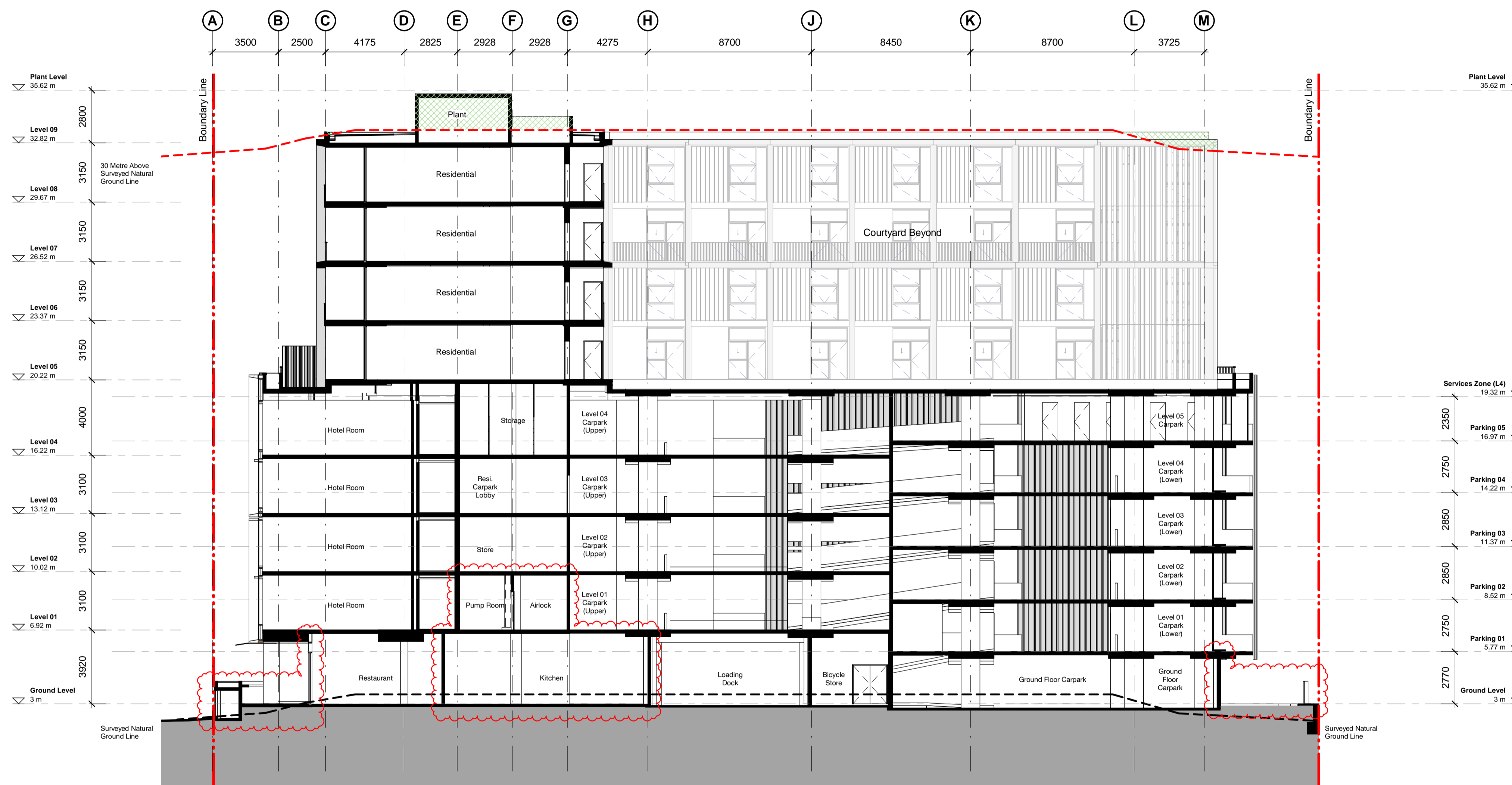
Do not scale drawings - refer to figured dimensions only. Any discrepancies shall immediately be referred to the architect for clarification.

All drawings may not be reproduced or distributed without prior permission from the architect.



Note

Green hatched zone denotes extents above 30 Metre Natural Ground Line survey.



1 Section
Section North-South
1 : 150

Revision	Date	Description	Initial	Checked
6	04/03/19	ISSUED FOR DA MODIFICATION	BS	DOMA
5	27/08/18	ISSUED FOR 80% TENDER	CQ	DE
4	03/08/18	ISSUED FOR 50% TENDER	CQ	DE
3	11/07/18	ISSUED FOR 30% TENDER	CQ	DE
2	14/06/18	ISSUED FOR INFORMATION	CQ	DE
1	24/04/18	ISSUE FOR DA COMMENTS	CQ	DE

42 Honeysuckle Drive
42 Honeysuckle Drive,
Newcastle

Building Sections
Section - North-South



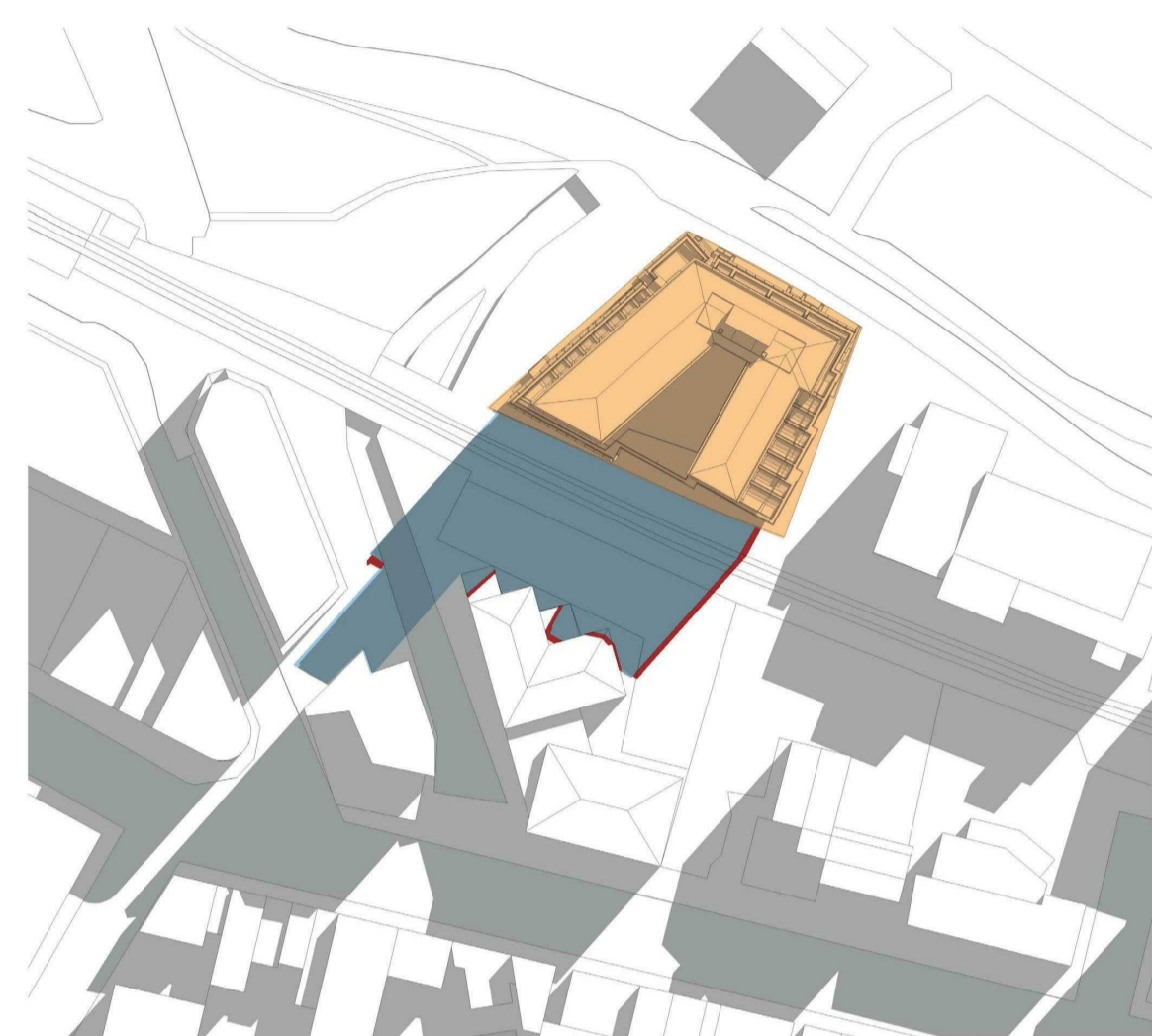
Status	DA MODIFICATION		
Scale	As indicated	@ A1	
Drawn	BS	Checked	DOMA
Project No.	s12109		
Plot Date	5/03/2019 3:16:51 PM		
Plot File	42HONEYSUCKLEDRIE_ARCH		
Drawing no.	AD.10.002	Revision	6

Melbourne 1 Nicholson Street
Melbourne VIC 3000 Australia
T 03 8664 6200 F 03 8664 6300
email mel@batesmart.com.au
http://www.batesmart.com.au

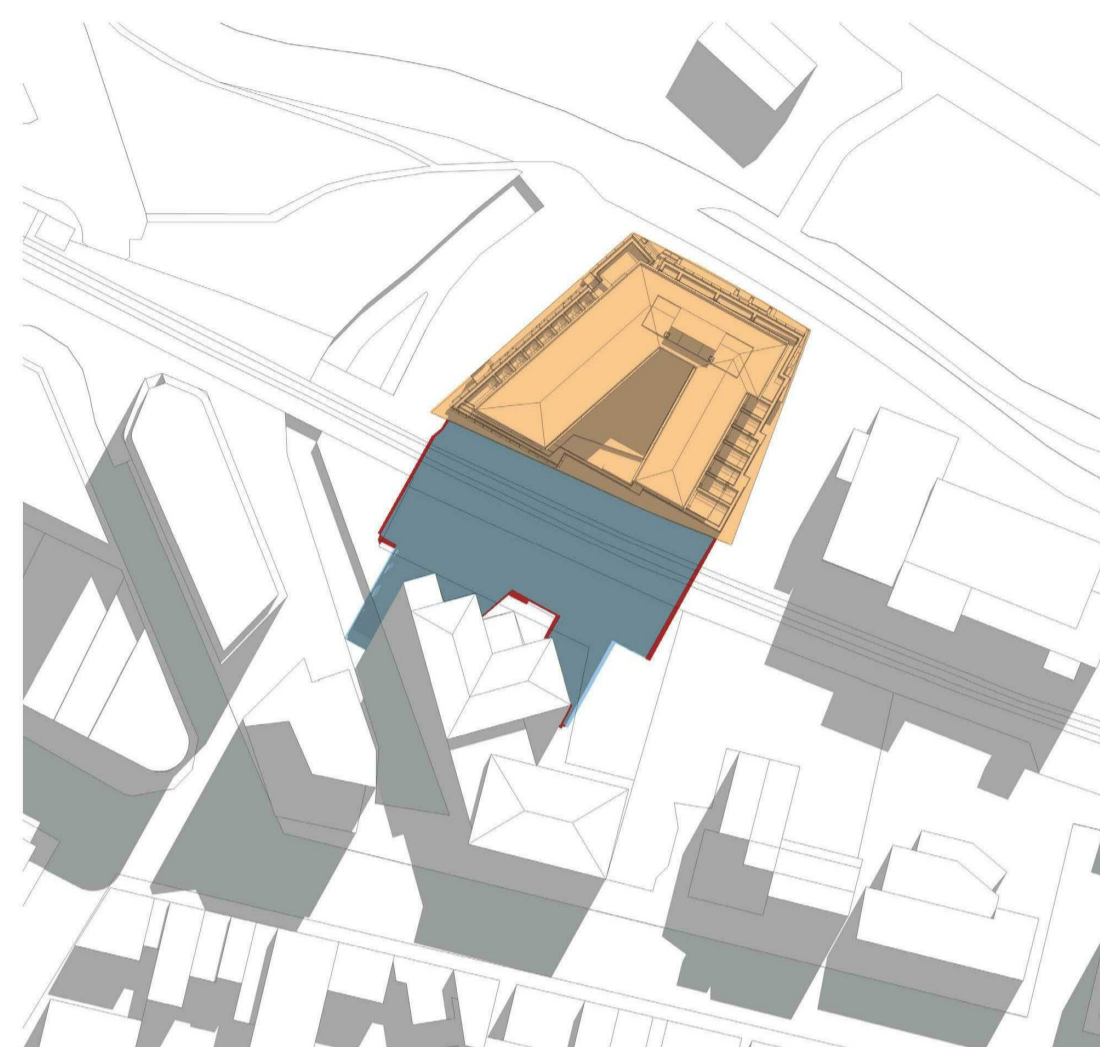
Sydney 43 Brisbane Street
Surry Hills NSW 2010 Australia
T 02 8354 5100 F 02 8354 5199
email syd@batesmart.com.au
http://www.batesmart.com.au

Bates Smart Pty Ltd ABN 70 004 999 400

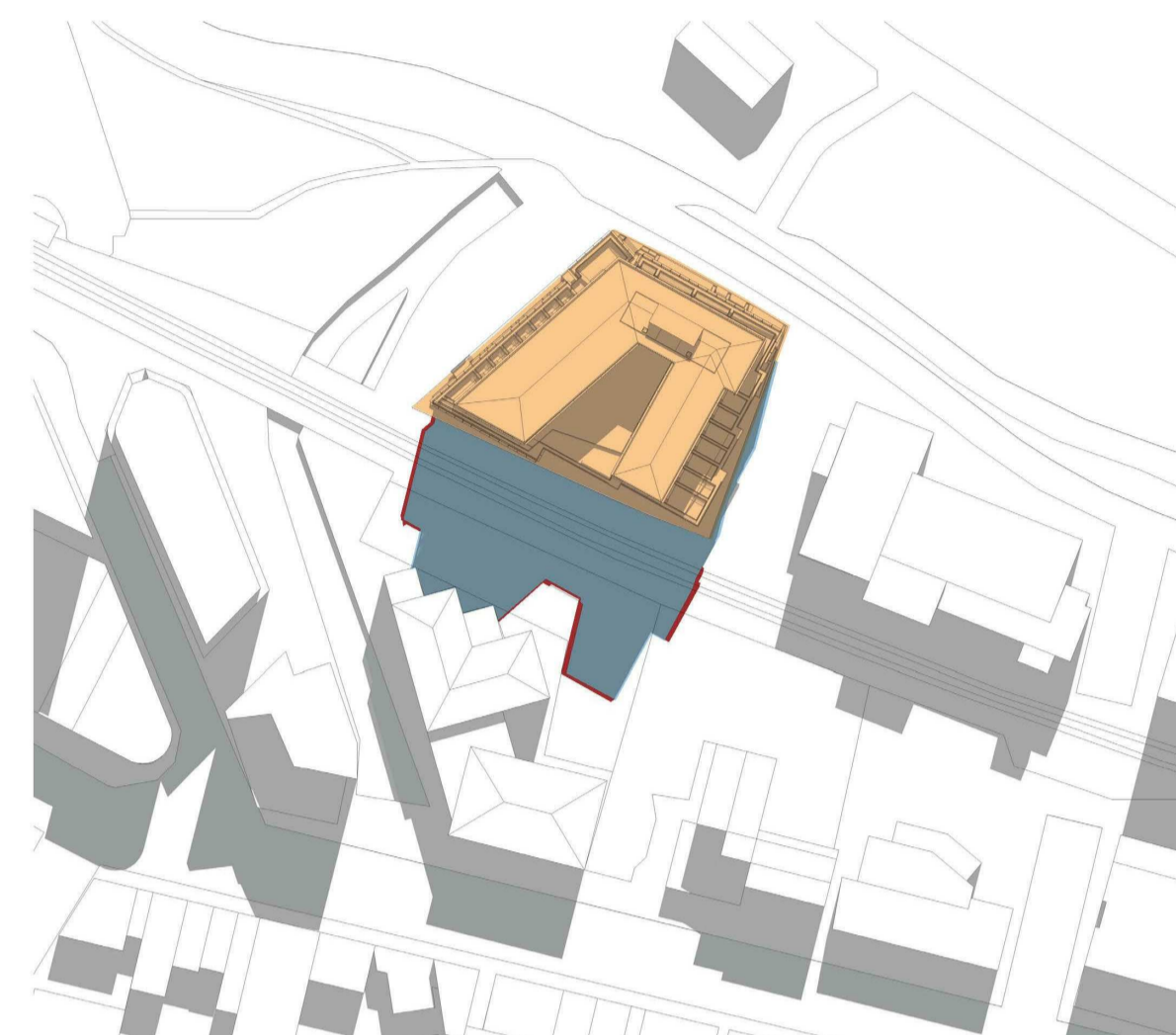
Check all dimensions and site conditions prior to commencement of any work, the purchase or ordering of any materials, fittings, plant, services or equipment and the preparation of shop drawings and or the fabrication of any components.
 Do not scale drawings - refer to figured dimensions only. Any discrepancies shall immediately be referred to the architect for clarification.
 All drawings may not be reproduced or distributed without prior permission from the architect.



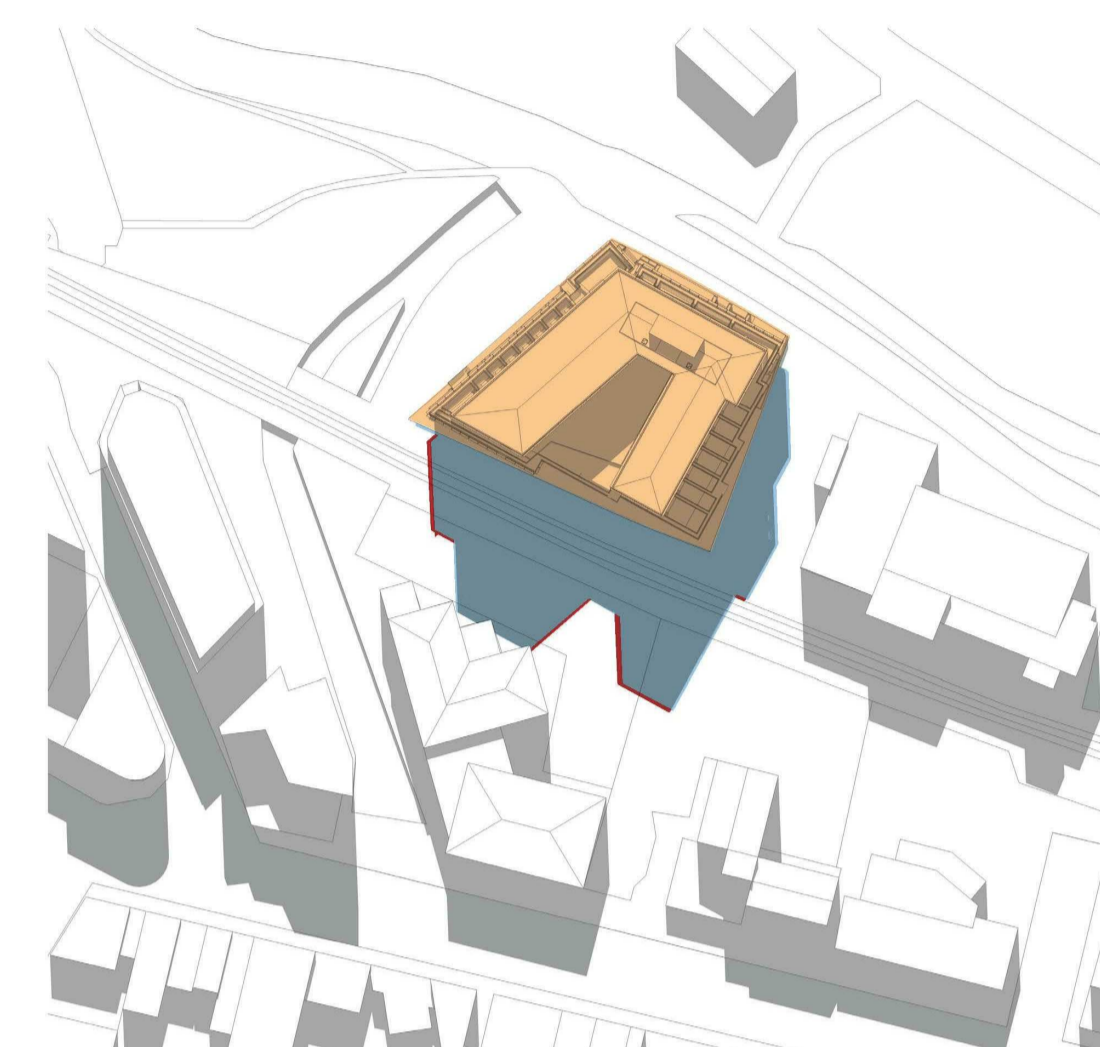
9 AM Winter Solstice



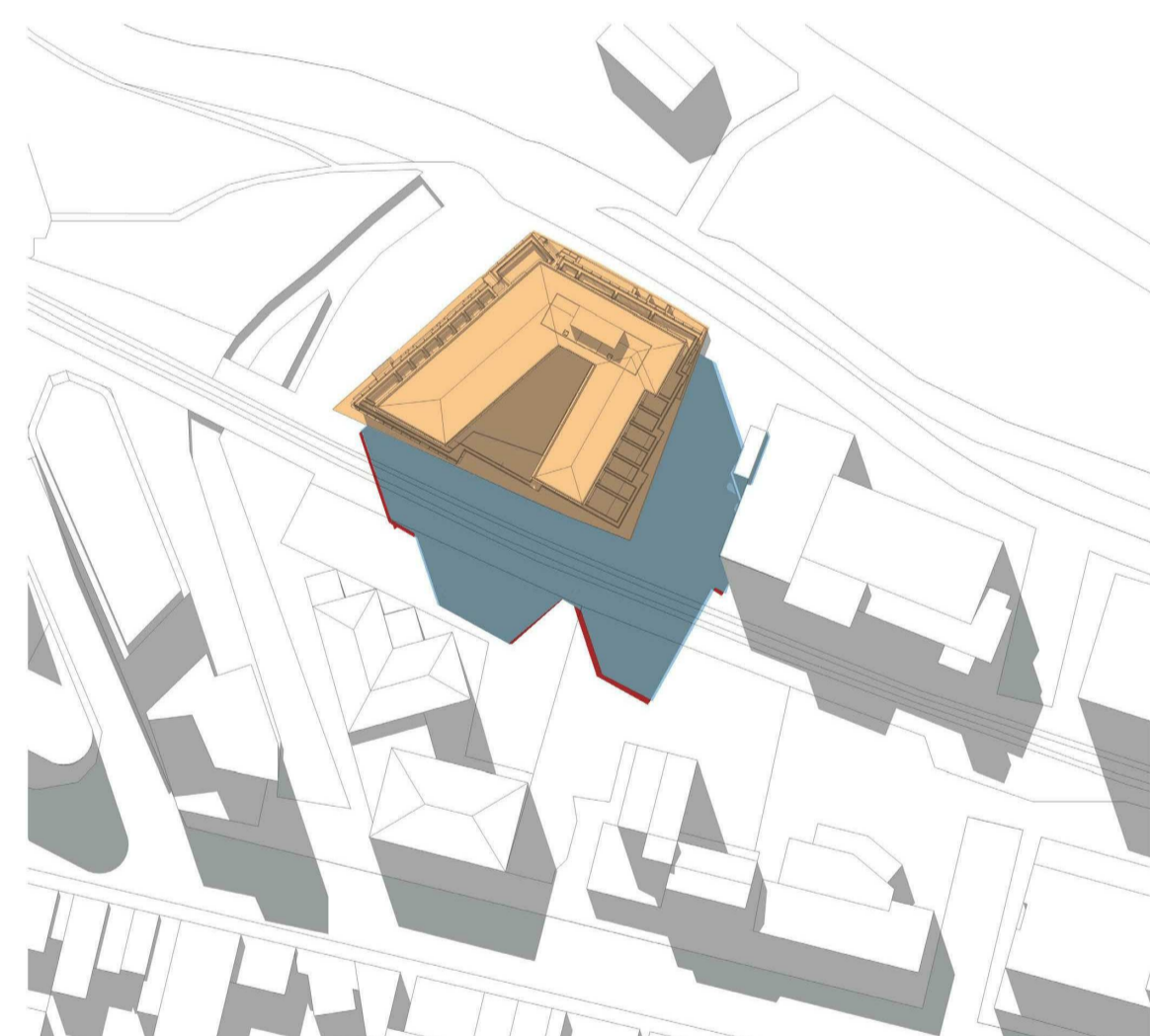
10 AM Winter Solstice



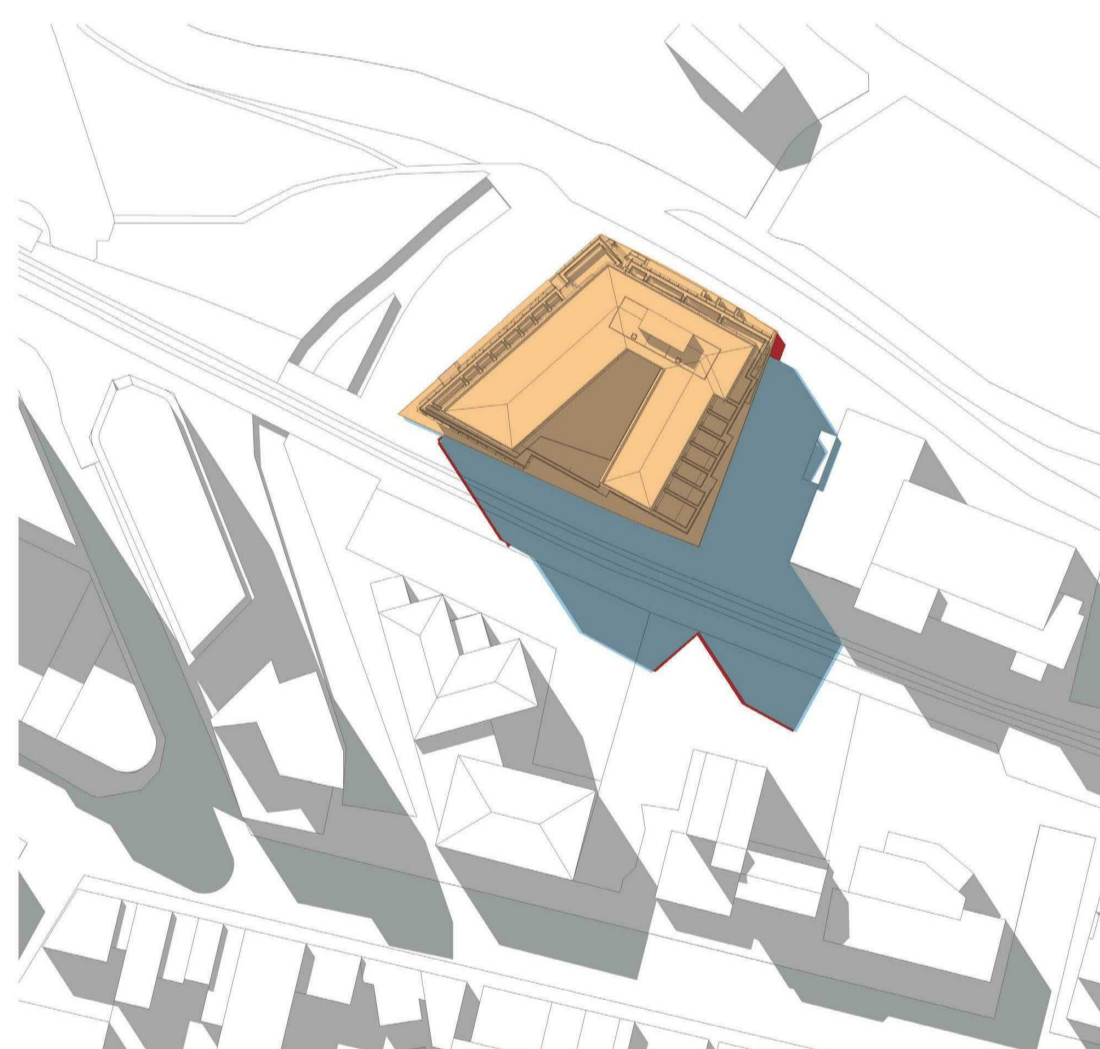
11 AM Winter Solstice



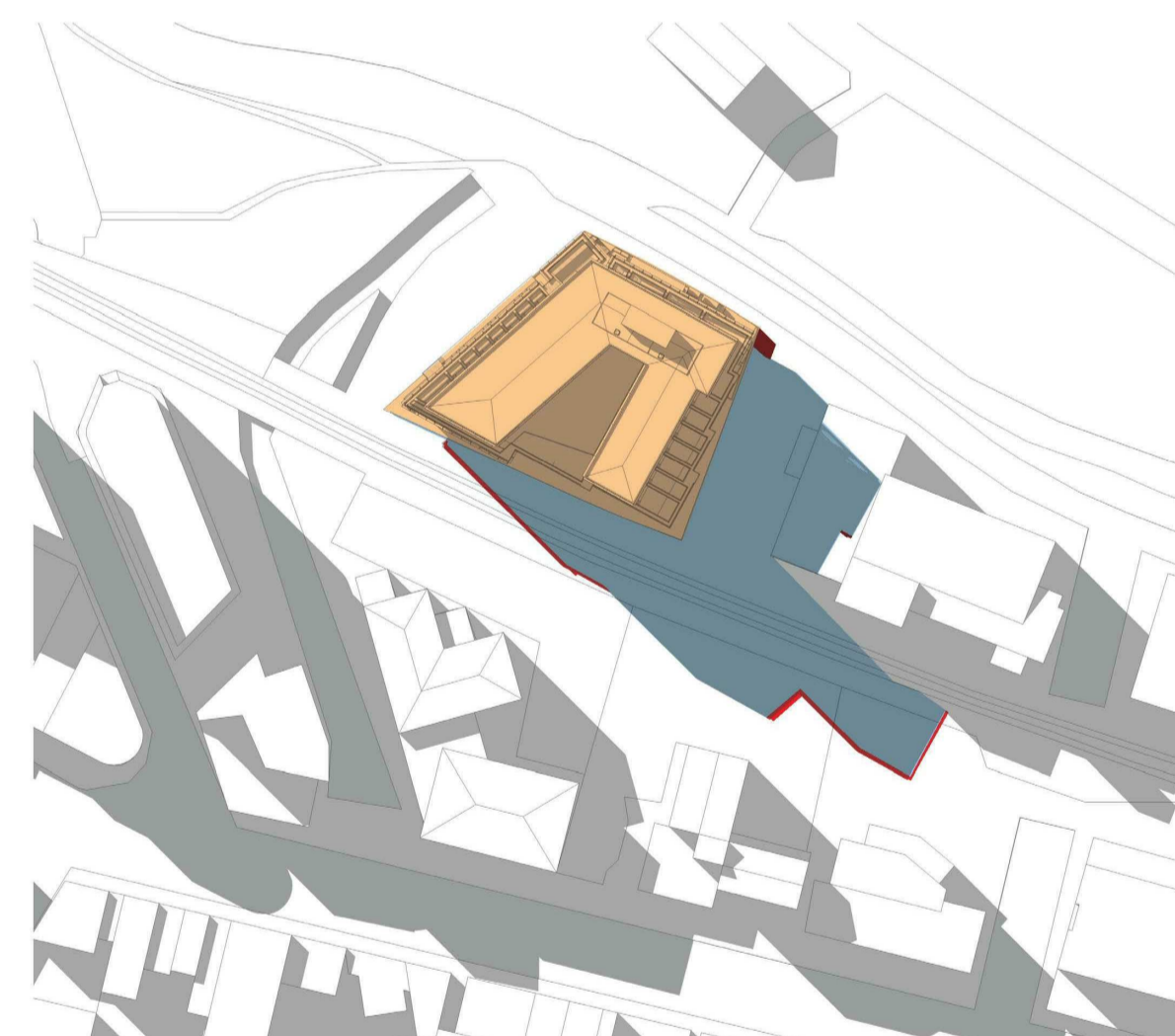
12 PM Winter Solstice



1 PM Winter Solstice



2 PM Winter Solstice



3 PM Winter Solstice

Legend:

- 30 Meter Zone
- Over 30 Meter Zone

Revision	Date	Description	Initial	Checked
1	24/04/18	ISSUE FOR DA COMMENTS	CQ	DE
A	27/09/17	DA Draft	CO	DE

NOT FOR CONSTRUCTION

**42 Honeysuckle Drive
 42 Honeysuckle Drive,
 Newcastle**

Sun Studies
 Shadow Diagrams Winter Solstice
 June 21



Status	DA MODIFICATION		
Scale	@ A1		
Drawn	Author	Checked	Checker
Project No.	s12109		
Plot Date	4/03/2019 12:28:39 PM		
Plot File	42HONEYSUCKLEDRIVE_ARCH		
Drawing no.	Revision		
A21.001	1		

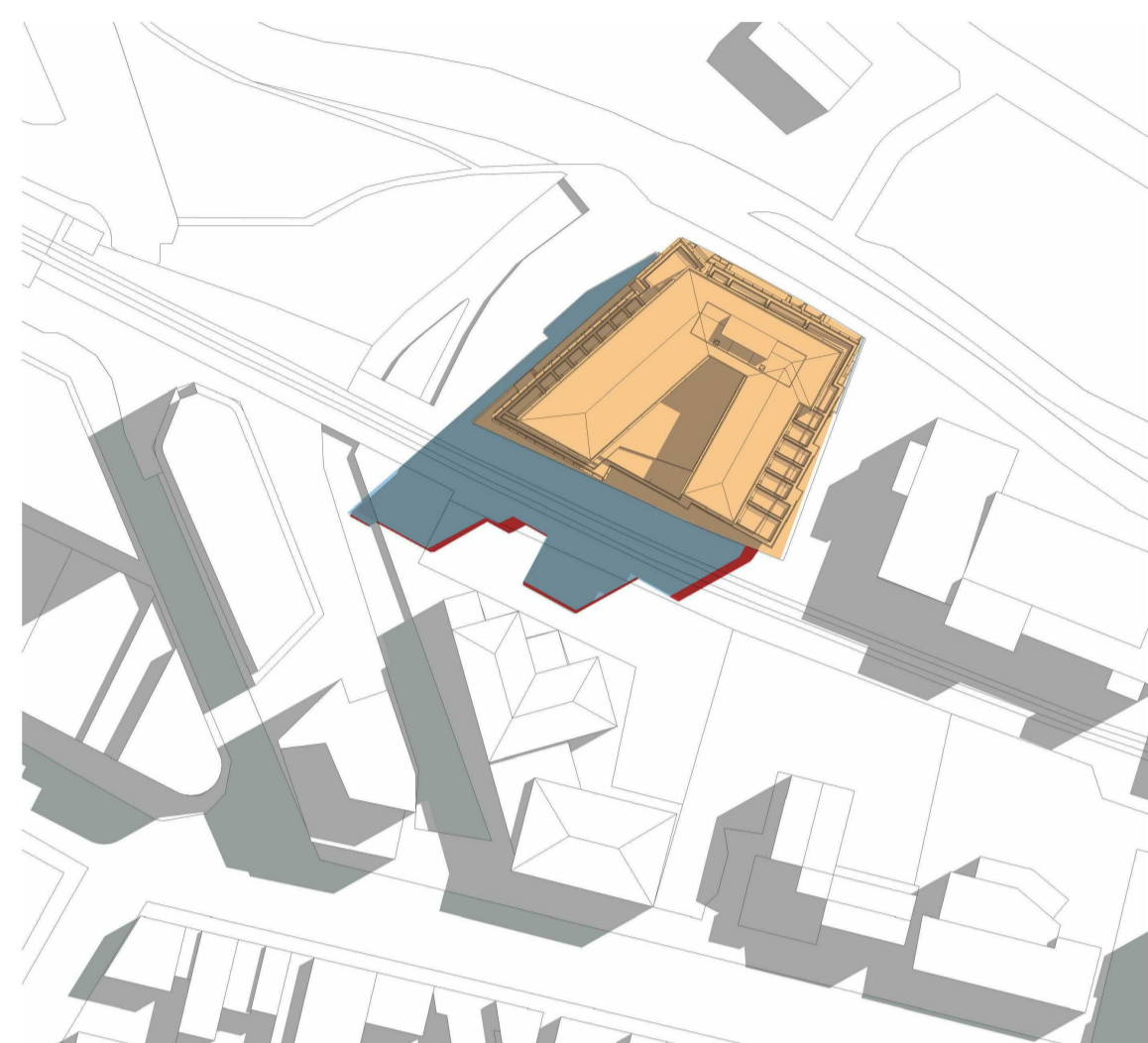
Melbourne 1 Nicholson Street
 Melbourne VIC 3000 Australia
 T 03 8664 6200 F 03 8664 6300
 email mel@batesmart.com.au
 http://www.batesmart.com.au

Sydney 43 Brisbane Street
 Surry Hills NSW 2010 Australia
 T 02 8354 5100 F 02 8354 5199
 email syd@batesmart.com.au
 http://www.batesmart.com.au

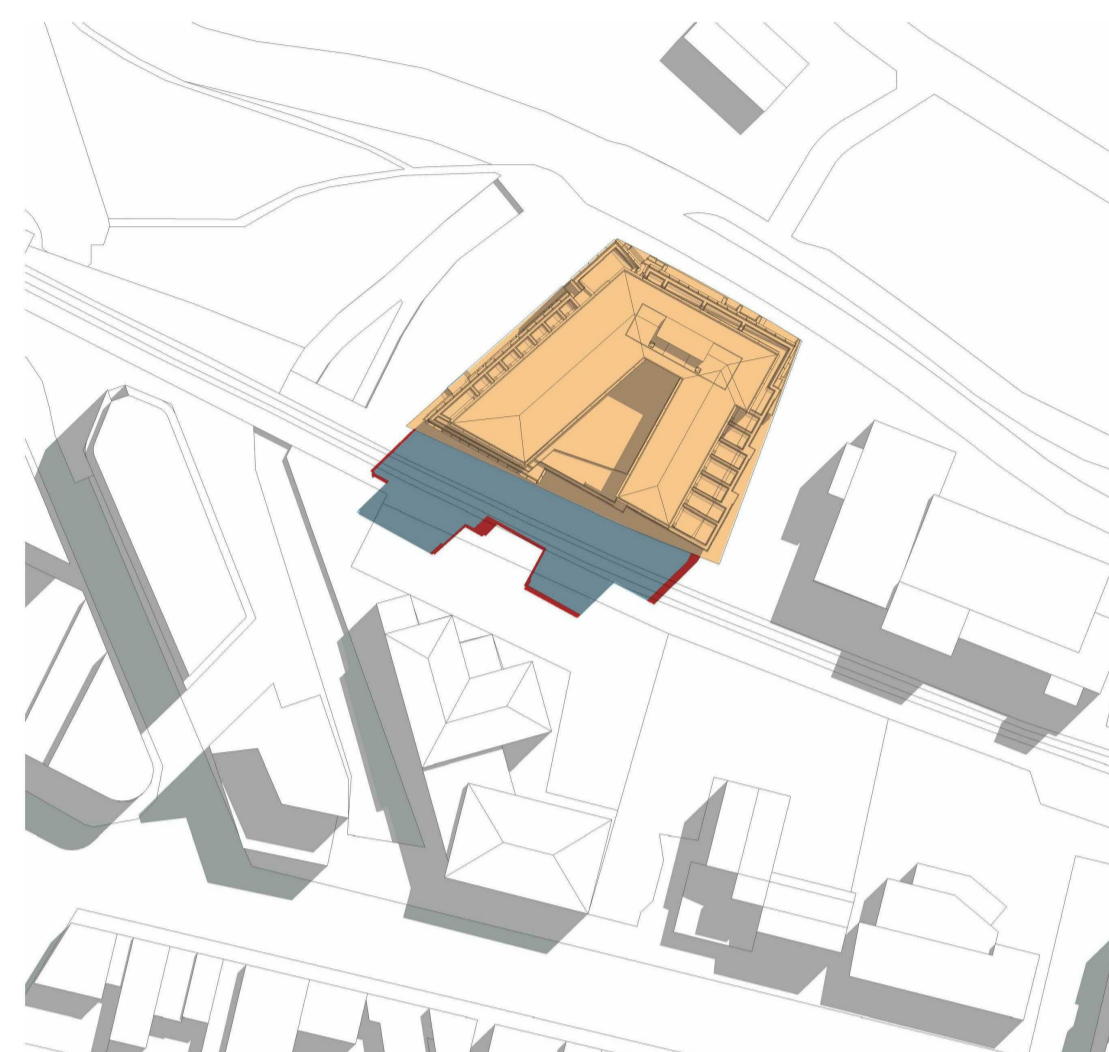
Bates Smart Pty Ltd ABN 70 004 999 400

BATESSMART

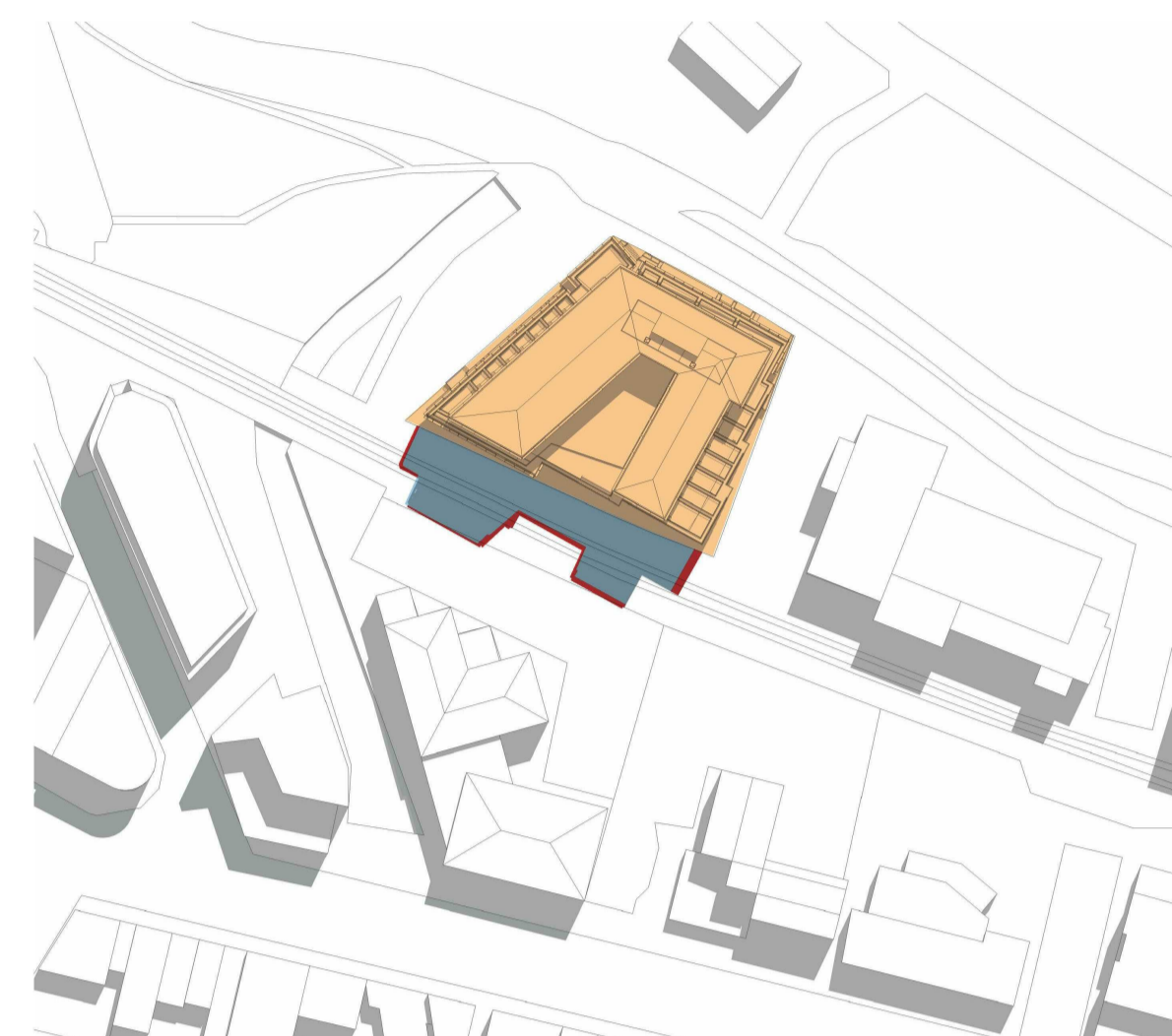
Check all dimensions and site conditions prior to commencement of any work, the purchase or ordering of any materials, fittings, plant, services or equipment and the preparation of shop drawings and or the fabrication of any components.
 Do not scale drawings - refer to figured dimensions only. Any discrepancies shall immediately be referred to the architect for clarification.
 All drawings may not be reproduced or distributed without prior permission from the architect.



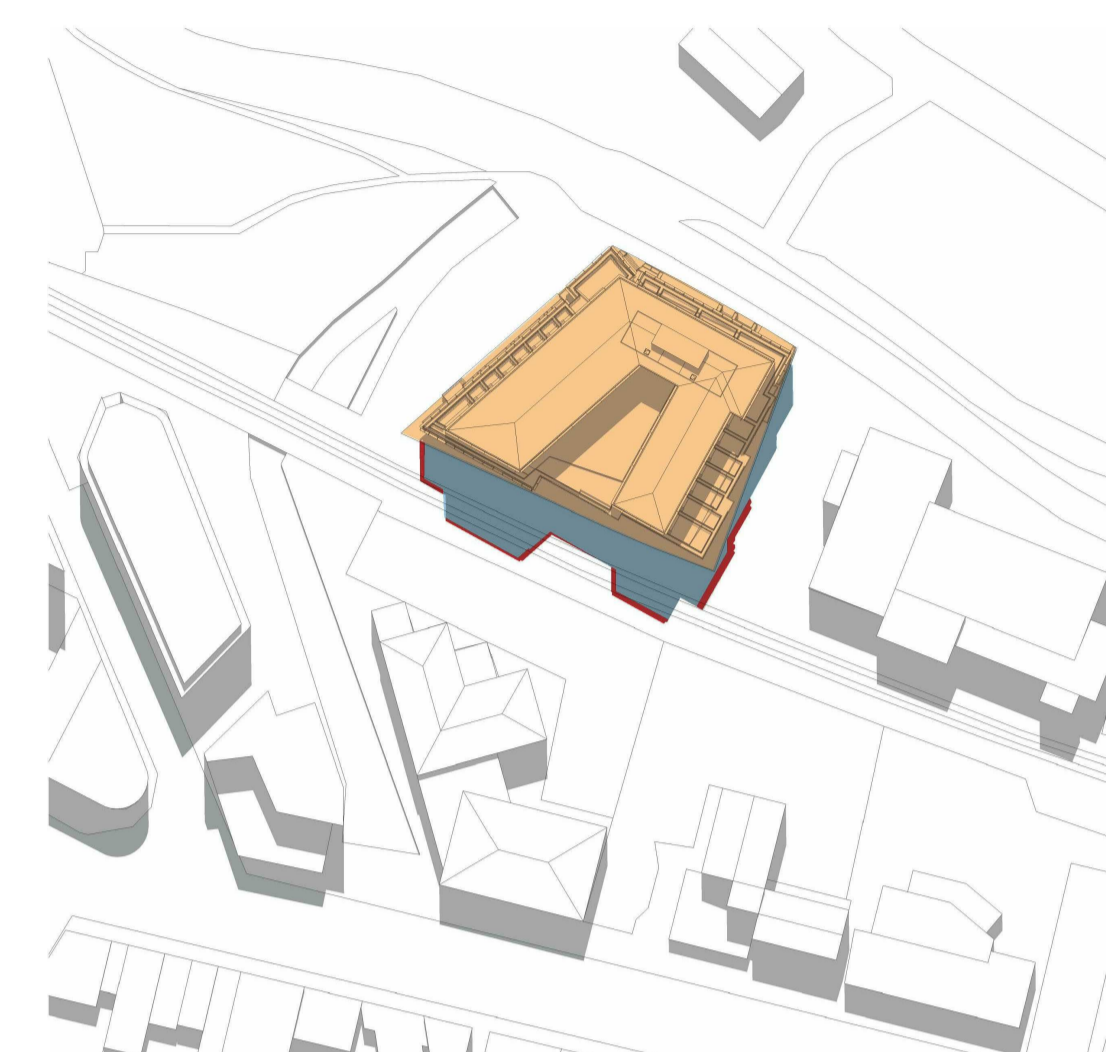
9 AM Equinox



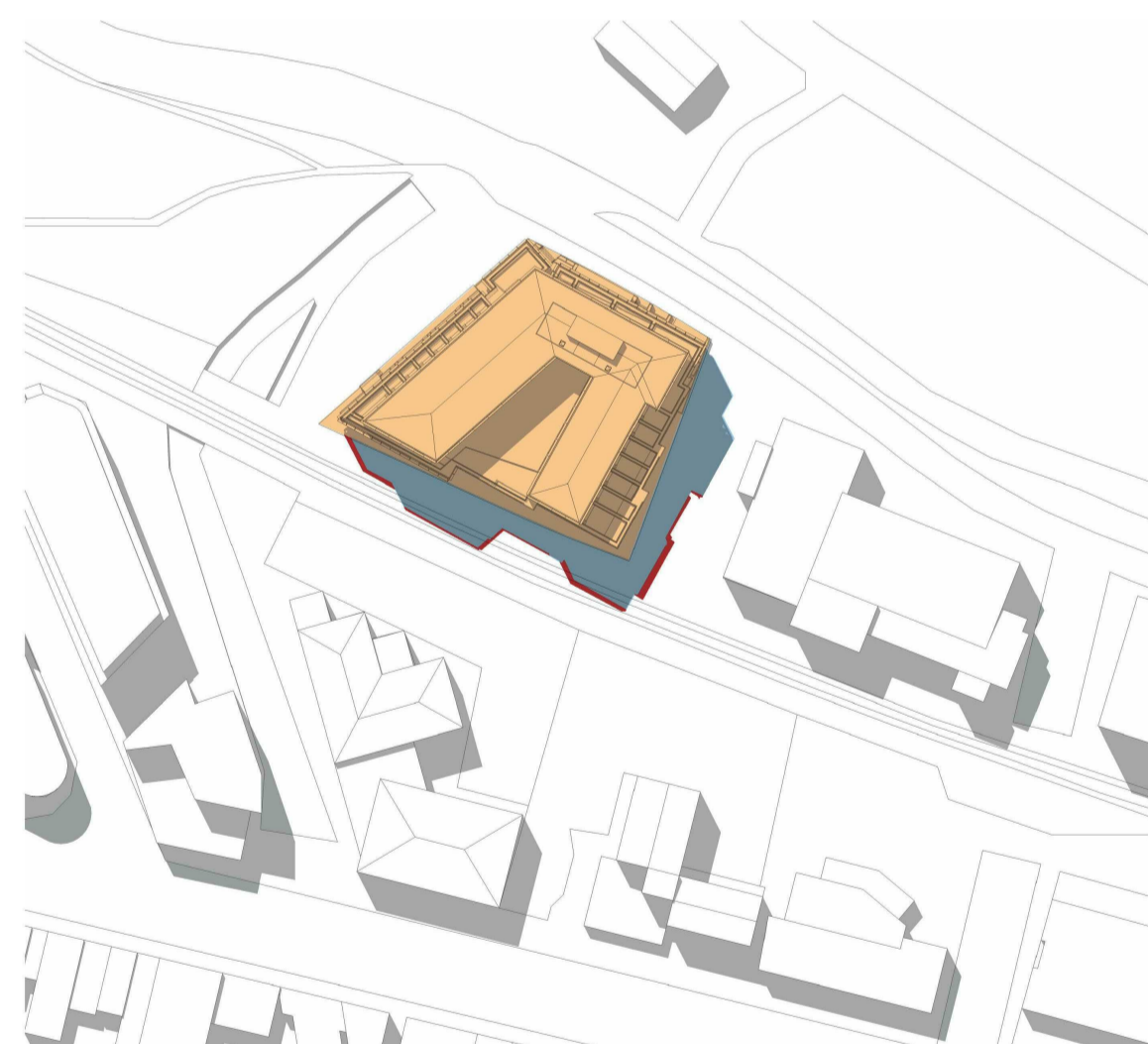
10 AM Equinox



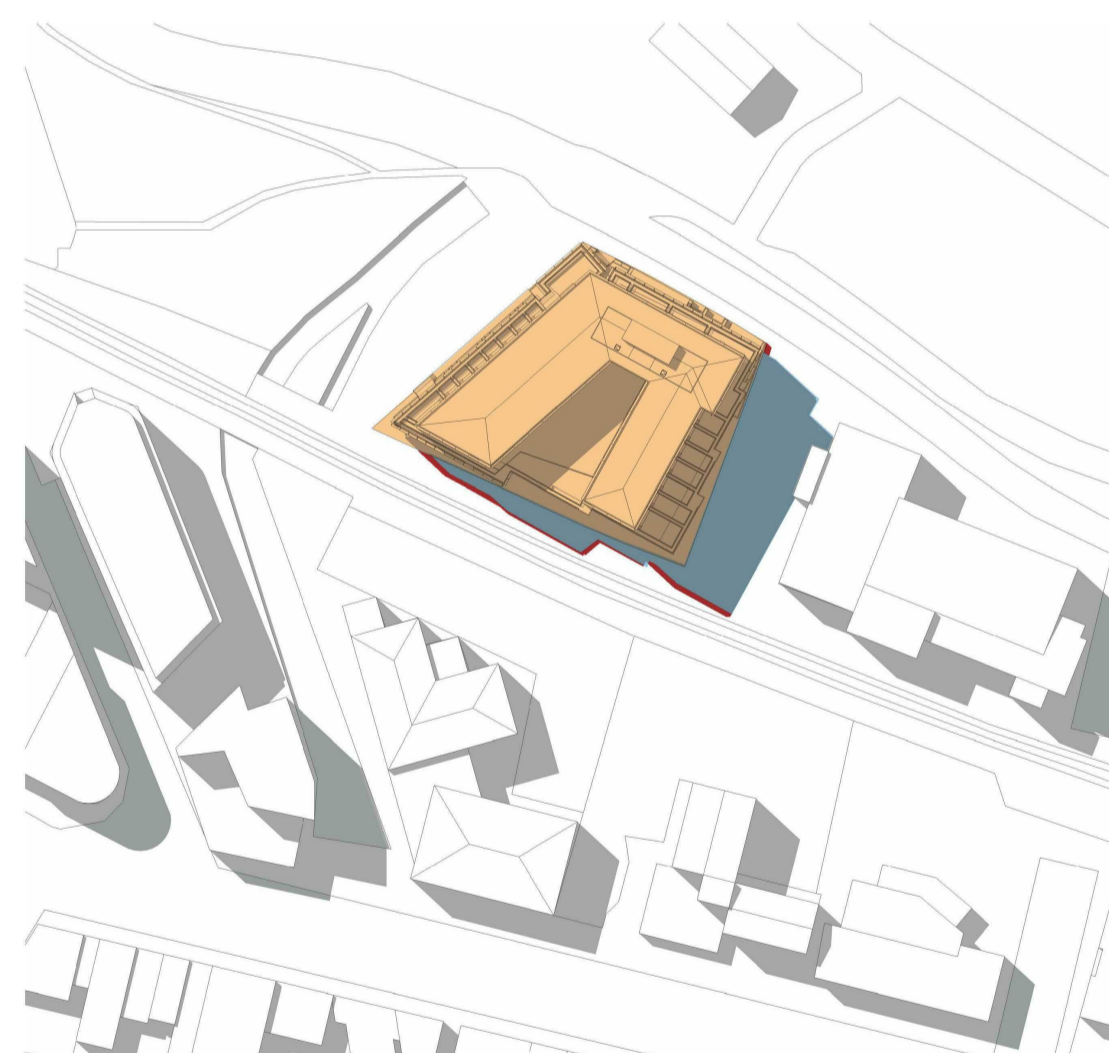
11 AM Equinox



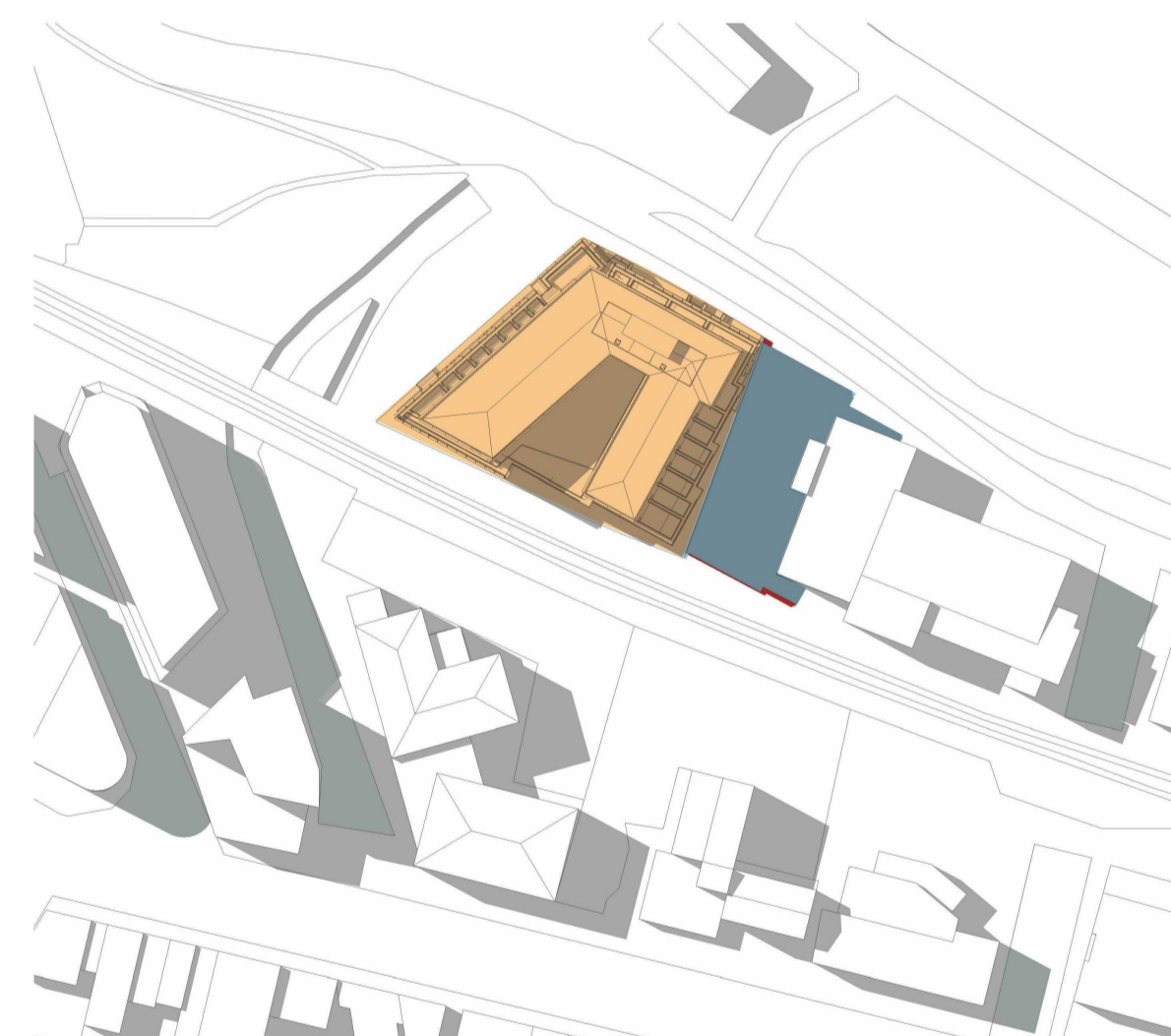
12 PM Equinox



1 PM Equinox



2 PM Equinox



3 PM Equinox

Legend:

- 30 Meter Zone
- Over 30 Meter Zone

1	24/04/18	ISSUE FOR DA COMMENTS	CQ	DE
A	27/09/17	DA Draft	CO	DE
Revision	Date	Description	Initial	Checked

NOT FOR CONSTRUCTION

**42 Honeysuckle Drive
 42 Honeysuckle Drive,
 Newcastle**



**Sun Studies
 Shadow Diagrams - Equinox -
 March 21 & September 22**

Status	DA MODIFICATION		
Scale	@ A1		
Drawn	Author	Checked	Checker
Project No.	s12109		
Plot Date	4/03/2019 12:28:44 PM		
Plot File	42HONEYSUCKLEDRIE_ARCH		
Drawing no.	A21.002		Revision
			1

Melbourne 1 Nicholson Street
 Melbourne VIC 3000 Australia
 T 03 8664 6200 F 03 8664 6300
 email mel@batesmart.com.au
 http://www.batesmart.com.au

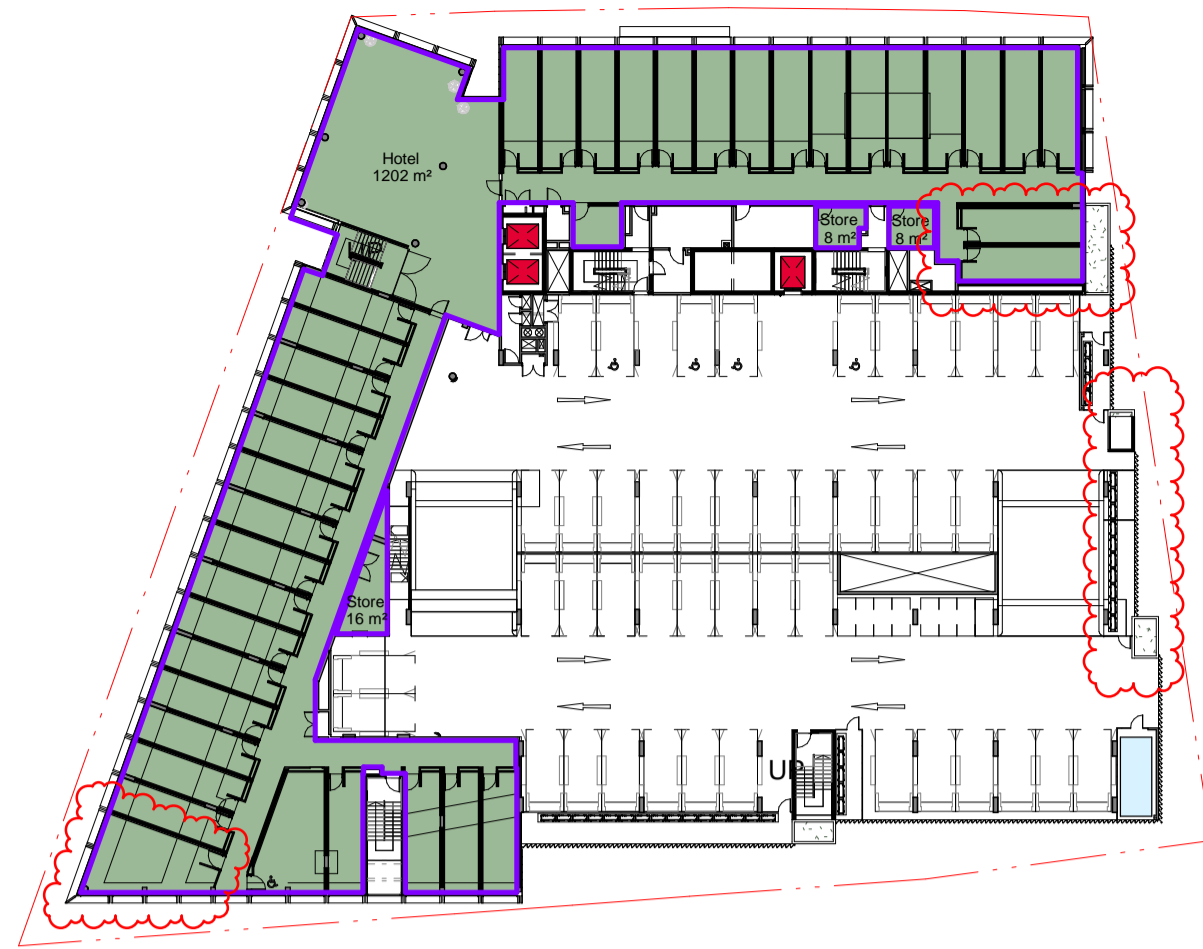
Sydney 43 Brisbane Street
 Surry Hills NSW 2010 Australia
 T 02 8354 5100 F 02 8354 5199
 email syd@batesmart.com.au
 http://www.batesmart.com.au

Bates Smart Pty Ltd ABN 70 004 999 400

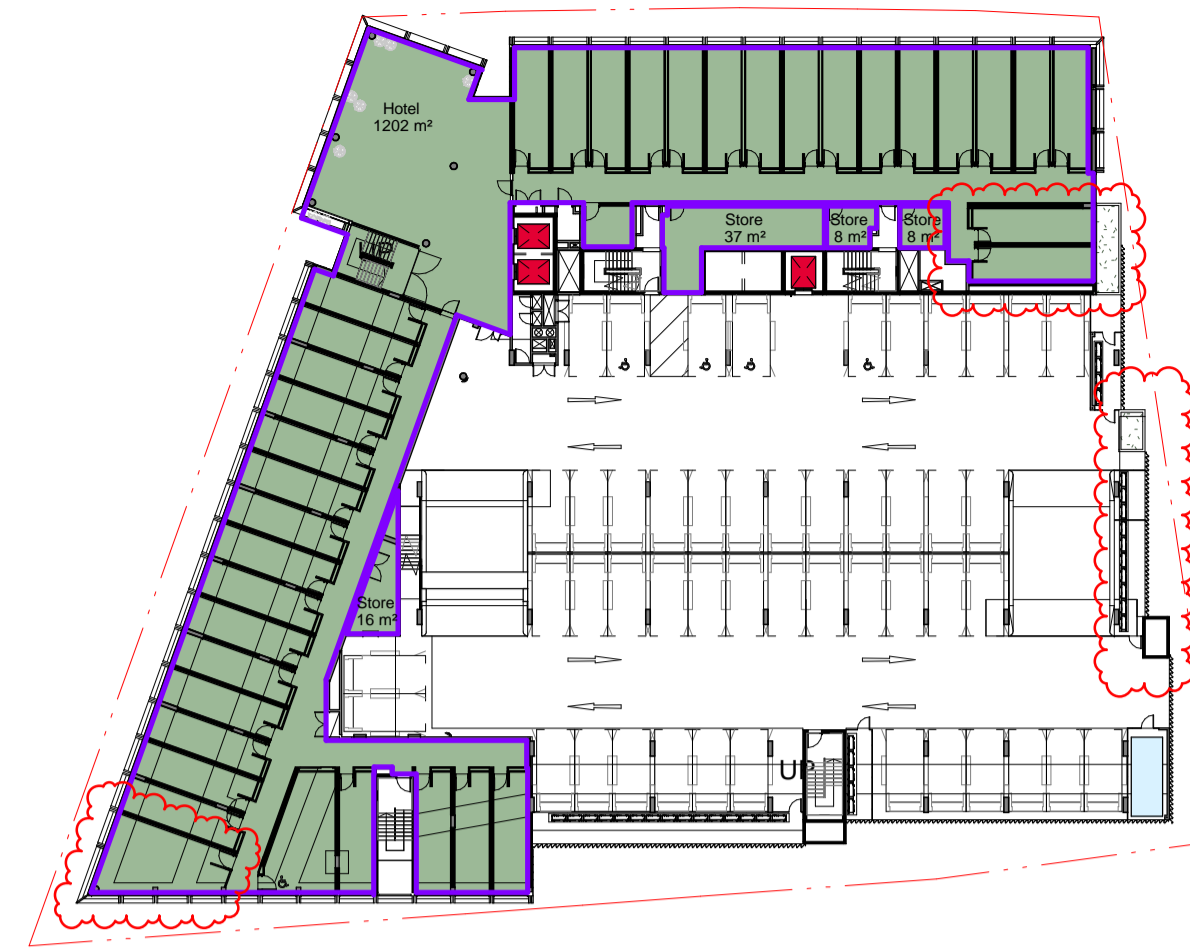
BATESSMART



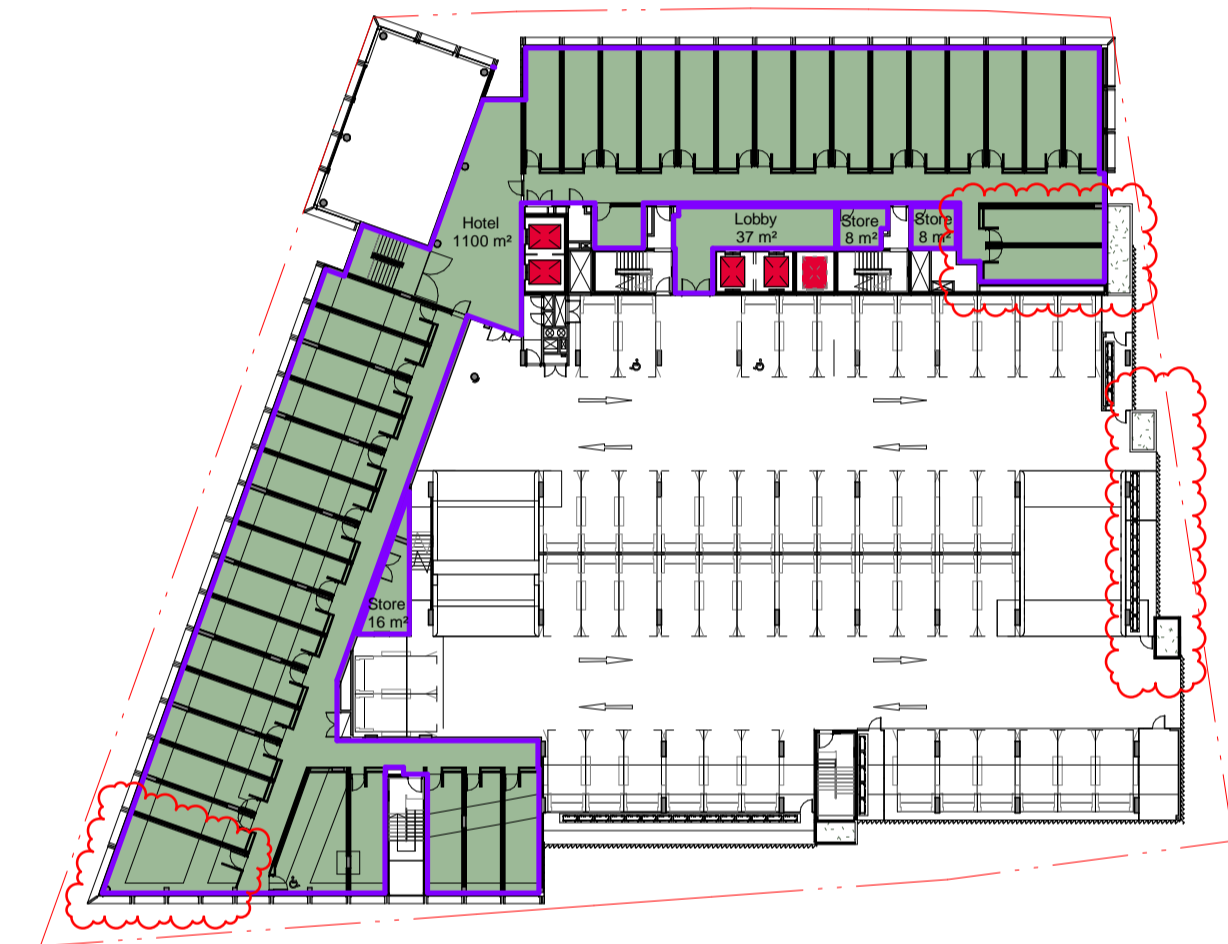
1 Plan
Ground Level 1: 500



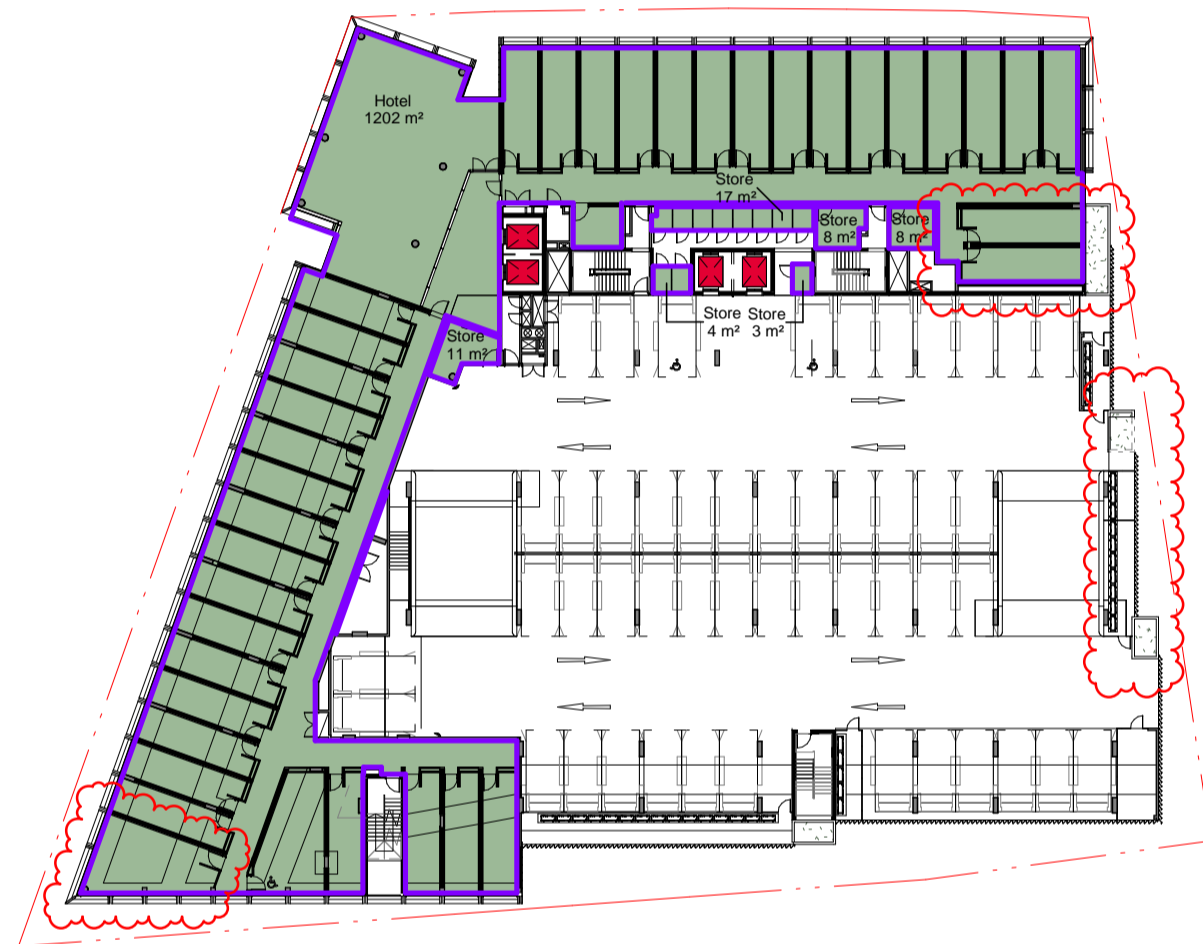
2 Plan
Level 01 1: 500



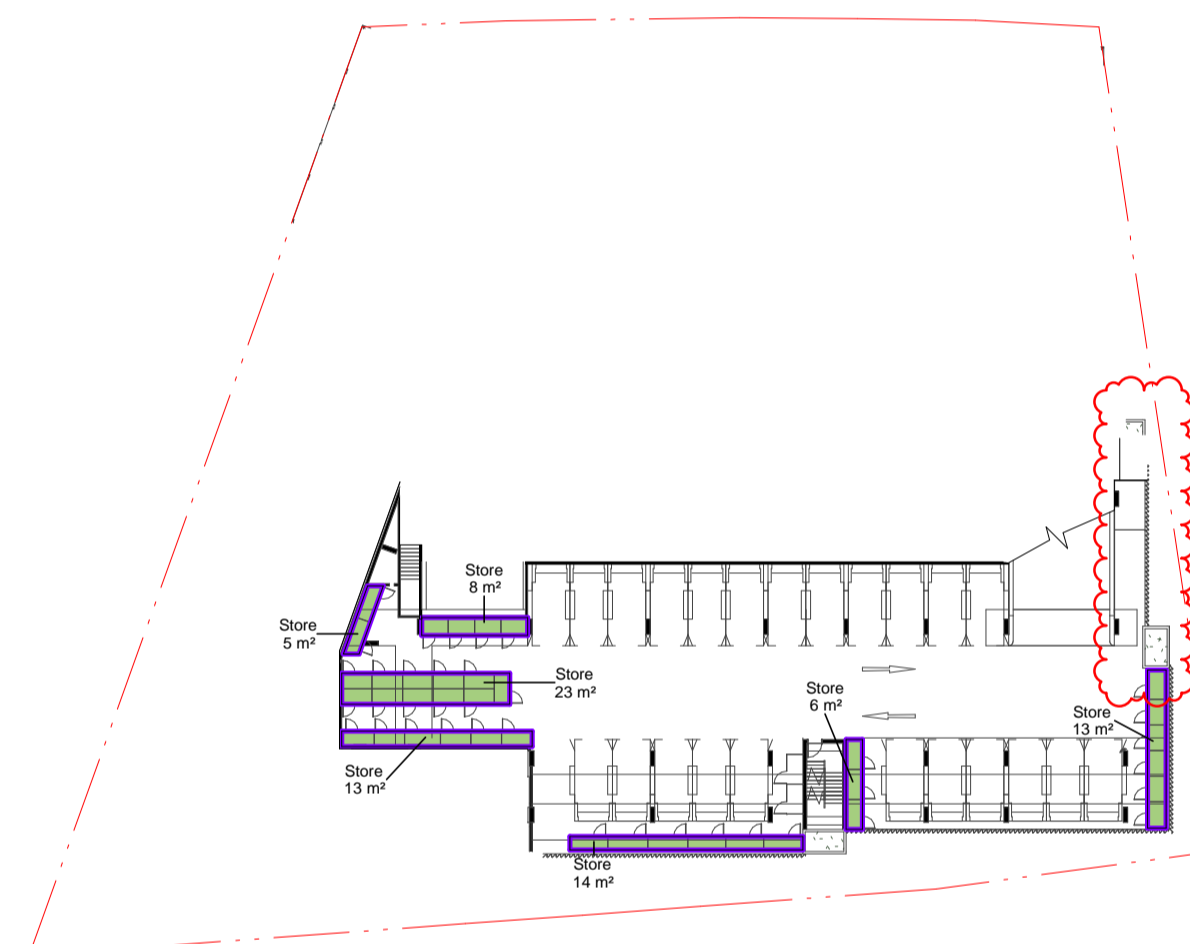
3 Plan
Level 02 1: 500



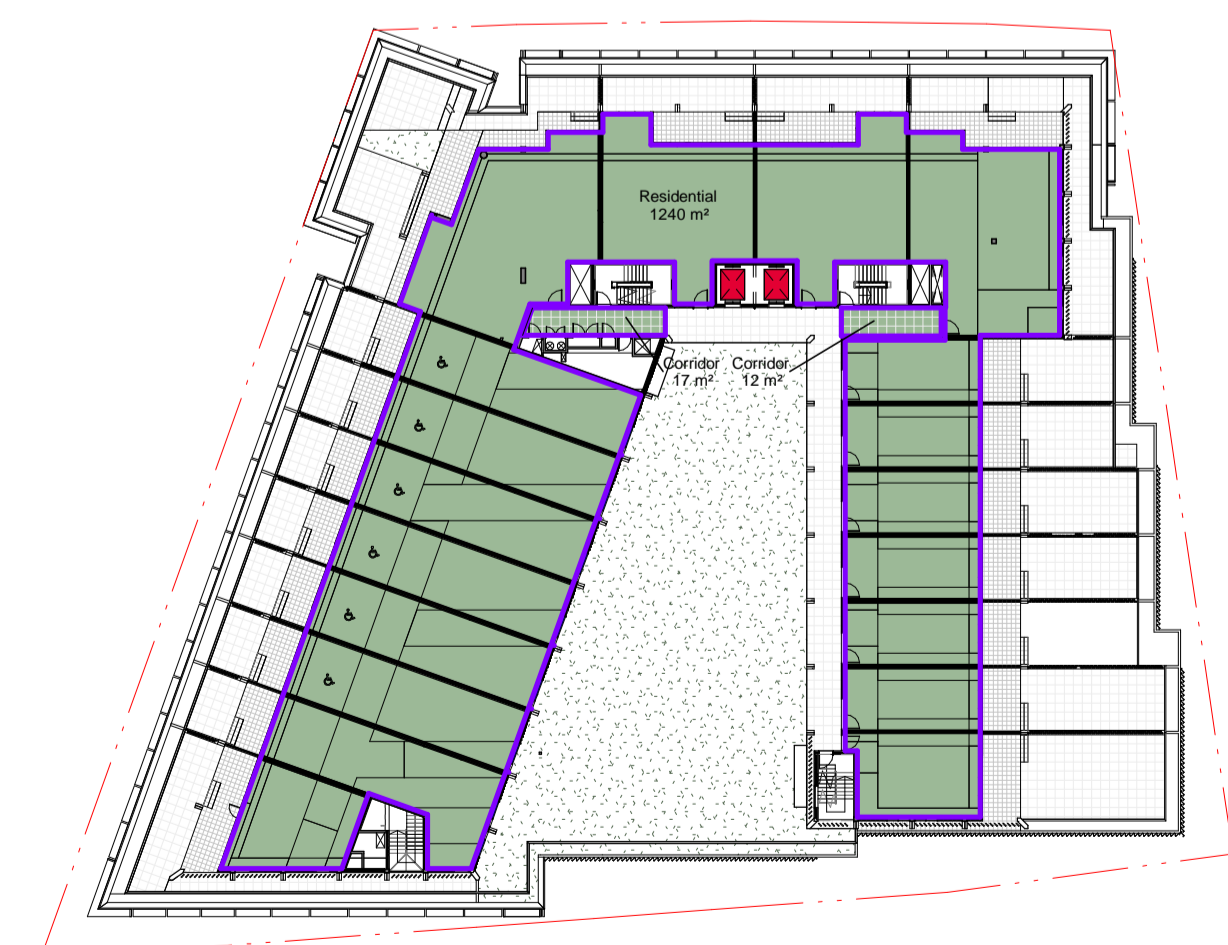
4 Plan
Level 03 1: 500



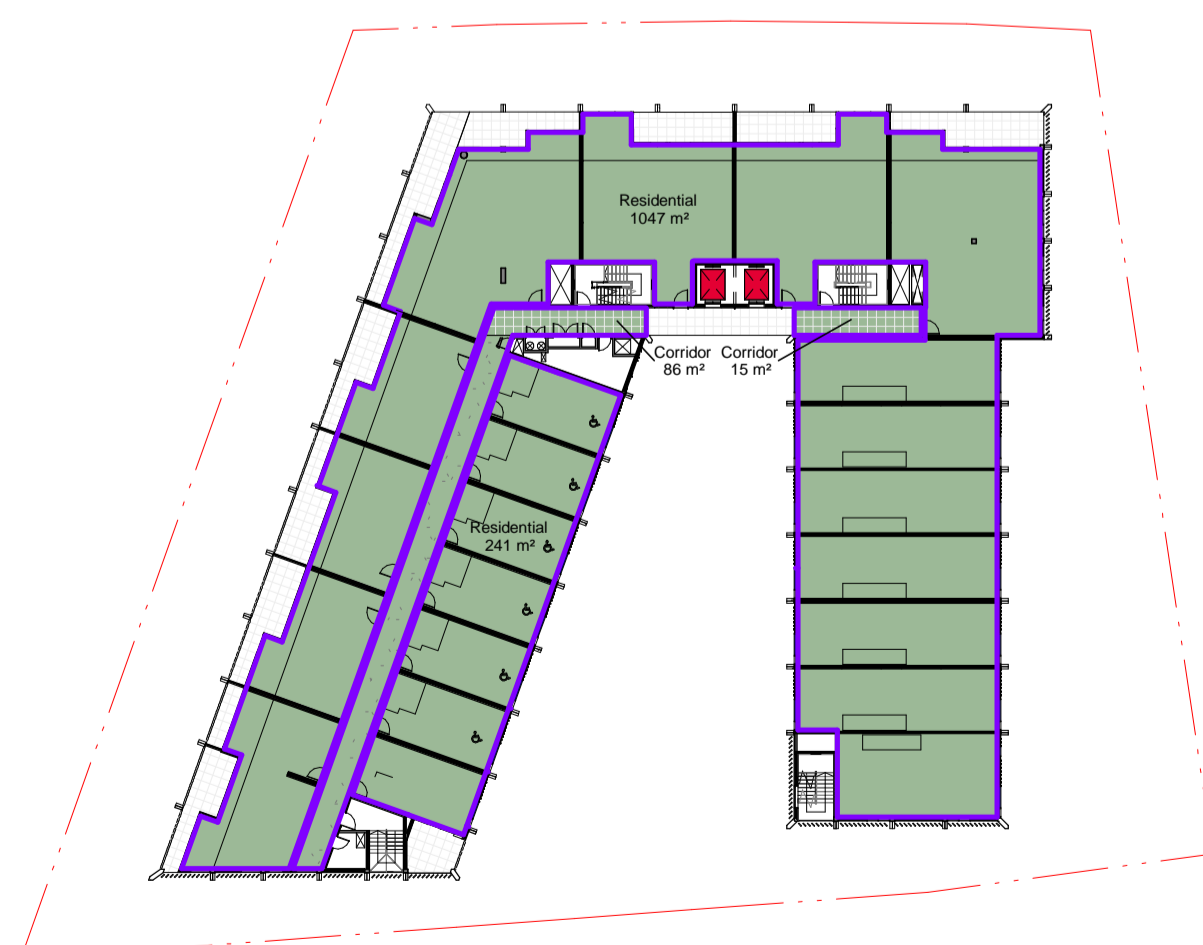
5 Plan
Level 04 1: 500



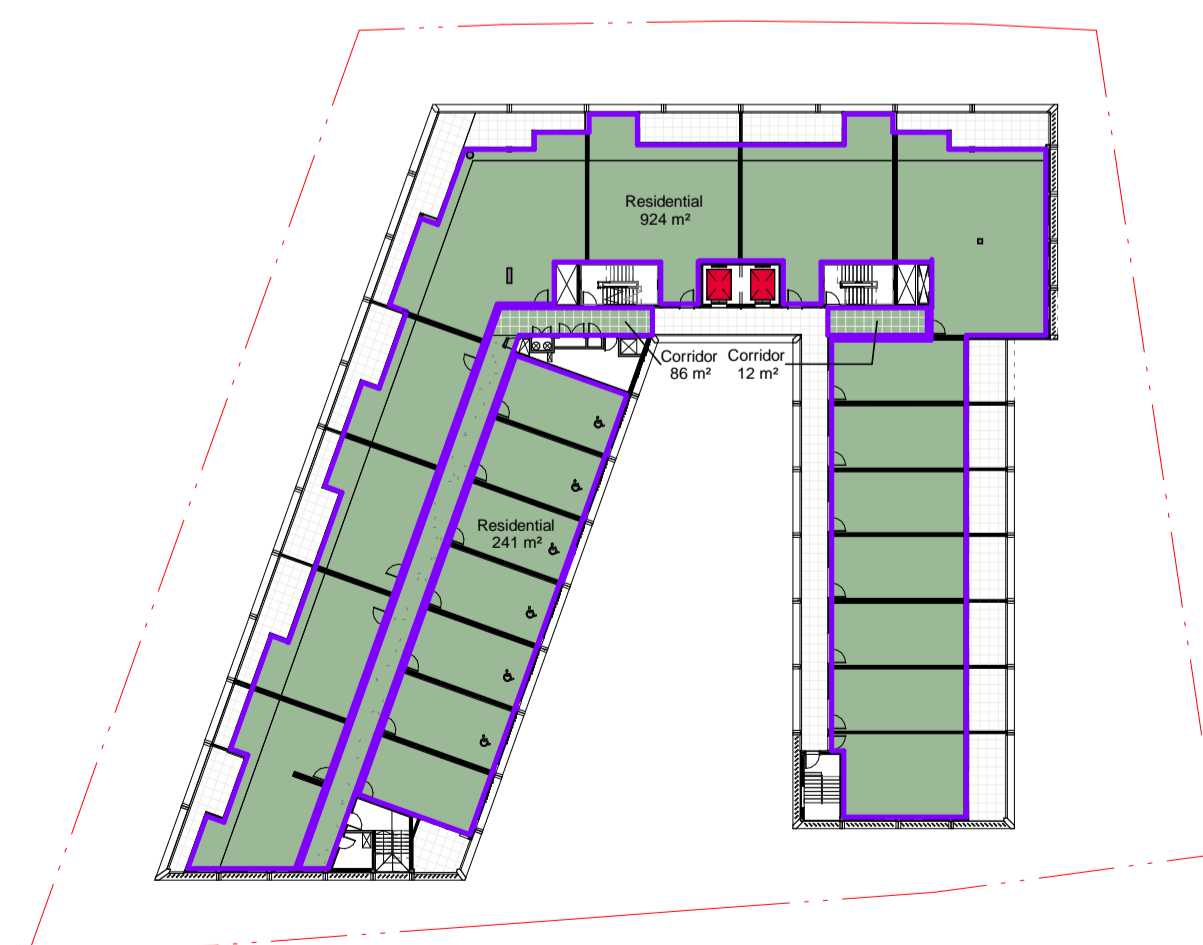
6 Plan
Parking 05 1: 500



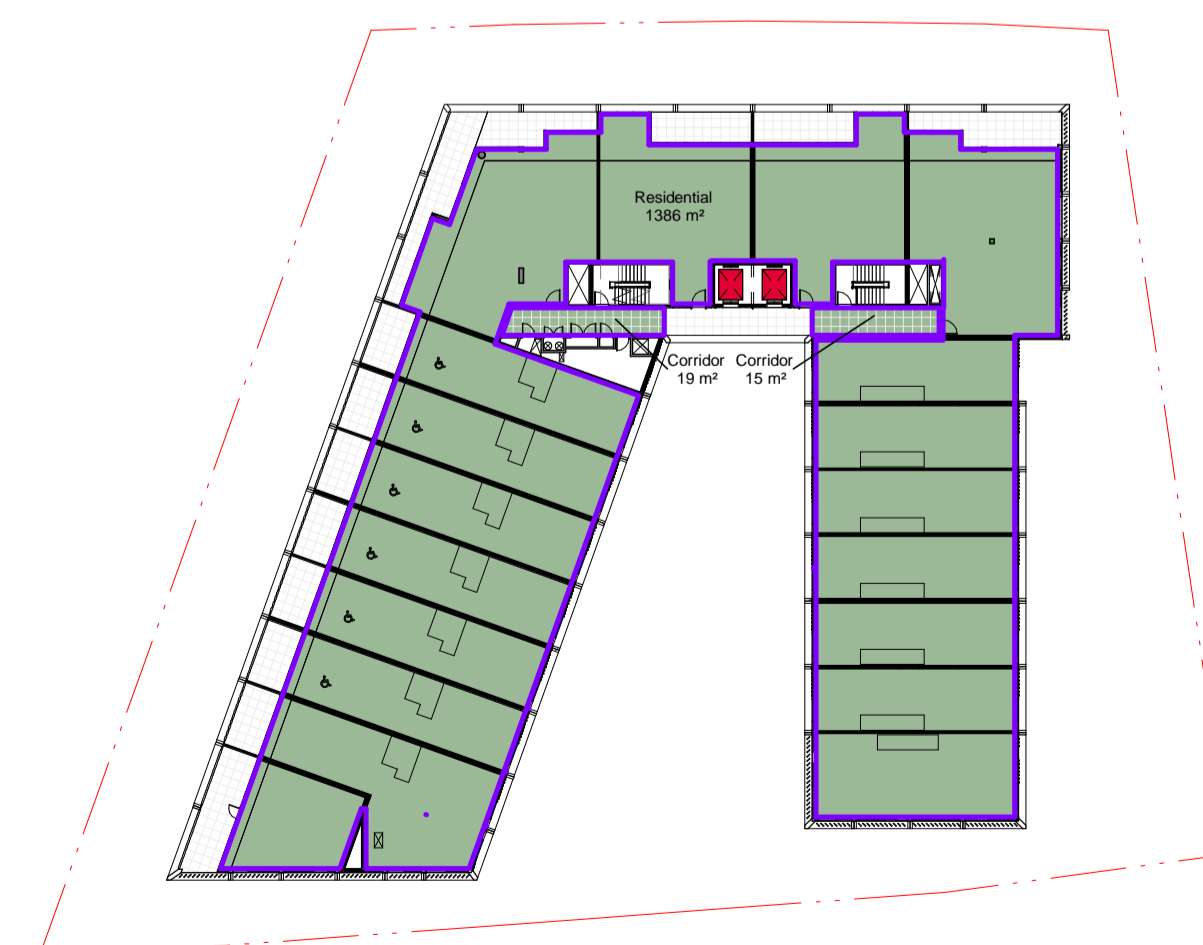
7 Plan
Level 05 1: 500



8 Plan
Level 06 1: 500



9 Plan
Level 07 1: 500



10 Plan
Level 08 1: 500

Area Schedule (GFA)	
Building Use	Area (m ²)
Ground Level	
Hotel	479 m ²
Lobby	35 m ²
Retail	188 m ²
Level 01	
Hotel	1202 m ²
Store	8 m ²
Store	16 m ²
Store	8 m ²
Level 02	
Hotel	1202 m ²
Store	8 m ²
Store	37 m ²
Store	16 m ²
Store	8 m ²
Level 03	
Hotel	1100 m ²
Lobby	37 m ²
Store	16 m ²
Store	8 m ²
Store	8 m ²
Level 04	
Hotel	1202 m ²
Store	17 m ²
Store	4 m ²
Store	3 m ²
Store	8 m ²
Store	11 m ²
Store	8 m ²
Parking 05	
Store	13 m ²
Store	6 m ²
Store	23 m ²
Store	13 m ²
Store	8 m ²
Store	5 m ²
Store	14 m ²
Level 05	
Corridor	17 m ²
Corridor	12 m ²
Residential	1240 m ²
Level 06	
Corridor	86 m ²
Corridor	15 m ²
Residential	1047 m ²
Residential	241 m ²
Level 07	
Corridor	86 m ²
Corridor	12 m ²
Residential	924 m ²
Residential	241 m ²
Level 08	
Corridor	19 m ²
Corridor	15 m ²
Residential	1386 m ²

Check all dimensions and site conditions prior to commencement of any work, the purchase or ordering of any materials, fittings, plant, services or equipment and the preparation of shop drawings and/or the fabrication of any components.

Do not scale drawings - refer to figured dimensions only. Any discrepancies shall immediately be referred to the architect for clarification.

All drawings may not be reproduced or distributed without prior permission from the architect.

Area Schedule (GFA) Totals	
Building Use	Area (m ²)
Corridor	263 m ²
Hotel	5185 m ²
Lobby	72 m ²
Residential	5079 m ²
Retail	188 m ²
Store	268 m ²
	11053 m ²

NOTE: OPEN CORRIDORS EXCLUDED
RESIDENTIAL STORAGE INCLUDED

Gross Floor Area means the sum of the floor area of each floor of a building measured from the internal face of external walls, or from the internal face of walls separating the building from any other building, measured at a height of 1.4 metres above the floor, and includes:
(a) the area of a mezzanine, and
(b) habitable rooms in a basement or an attic, and
(c) any shop, auditorium, cinema, and the like, in a basement or attic, but excludes:
(d) any area for common vertical circulation, such as lifts and stairs, and
(e) any basement:
(i) storage, and
(ii) vehicular access, loading areas, garbage and services, and
(f) plant rooms, lift towers and other areas used exclusively for mechanical services or ducting, and
(g) car parking to meet any requirements of the consent authority (including access to that car parking), and
(h) any space used for the loading or unloading of goods (including access to it), and
(i) terraces and balconies with outer walls less than 1.4 metres high, and
(j) voids above a floor at the level of a storey or storey above.

Source: Newcastle Local Environmental Plan 2012

Revision	Date	Description	Initial	Checked
5	04/03/19	ISSUED FOR DA MODIFICATION	BS	DOMA
4	17/10/18	ISSUED FOR INFORMATION	JT	DE
3	28/05/18	ISSUED FOR DA COMMENTS	CQ	DE
2	22/05/18	ISSUED FOR DA COMMENTS	CQ	DE
1	10/05/18	ISSUE FOR DA COMMENTS	CQ	DE
A	27/09/17	DA Draft	CQ	DE

42 Honeysuckle Drive 42 Honeysuckle Drive, Newcastle

Area Plans GFA Plans

Status	DA MODIFICATION
Scale	1 : 500 @ A1
Drawn	BS Checked DOMA
Project No.	s12109
Plot Date	5/03/2019 3:07:05 PM
Plot File	42HONEYSUCKLEDRIE_ARCH
Drawing no.	Revision
A05.001	5

Melbourne 1 Nicholson Street
Melbourne VIC 3000 Australia
T 03 8664 6200 F 03 8664 6300
email mel@batesmart.com.au
http://www.batesmart.com.au

Sydney 43 Brisbane Street
Surry Hills NSW 2010 Australia
T 02 8354 5100 F 02 8354 5199
email syd@batesmart.com.au
http://www.batesmart.com.au

Bates Smart Pty Ltd ABN 70 004 999 400