

MGO

MT OWEN / GLENDELL

GLENCORE

9 December 2025

Director – Resource Assessments
Department of Planning and Environment
Locked Bag 5022
PARRAMATTA NSW 2124

Attention: Stephen O’Donoghue

Dear Steve,

GLENDELL MINE MODIFICATION 6

Scoping Request

BACKGROUND

Glendell Mine (Glendell) is a coal mining operation located approximately 20 km north-west of Singleton in the Upper Hunter region of NSW. Glendell is a component of Mount Owen/Glendell Operations (MGO), a mining precinct which also includes the Mount Owen and Ravensworth East Mines and a Coal Handling and Preparation Plant. MGO is managed by Mt Owen Pty Limited (MOPL), which is a subsidiary of Glencore Coal Pty Limited (Glencore). Glendell operates under Development Consent DA 80/952 granted under the *Environmental Planning and Assessment Act 1979* (EP&A Act). The other components of MGO are subject to Development Consent SSD-5850, which relates to the Mount Owen Continued Operations Project.

MGO is a participant in the Greater Ravensworth Area Water and Tailings Scheme (GRAWTS), which is a network of infrastructure that enables transfer of water and tailings between neighbouring Glencore-managed operations (namely MGO, Integra Underground Mine, Liddell Mine and Ravensworth Operations). The GRAWTS enables surplus water at a particular site to be used for operational purposes at other sites within the scheme. The water sharing facilitated by GRAWTS has the benefits of reducing reliance on external water sources and the need for off-site discharges under the Hunter River Salinity Trading Scheme.

DA 80/952 (as modified) enables mining operations to be carried out at Glendell until the end of June 2026. The other mining operations at MGO, which are authorised by SSD-5850, can be carried out until 31 December 2037. MOPL’s mine planning has considered how the assets at Glendell can be used to complement the ongoing mining operations at the Mount Owen Mine and the wider GRAWTS network.

Open cut voids are capable of being used as water storage and transfer points. The post-mining use of voids for water management purposes is advantageous as it reduces the need for purpose-built dams.

Glendell also has an existing mine infrastructure area (MIA) which includes administration buildings, a workshop, storage facilities, communications and services infrastructure and carpark.

MOPL is seeking a modification to DA 80/952 (the Modification) to enable the following activities in the post-mining phase of Glendell Mine:

- Use of Barrett Pit as a mine water storage, including for water received via the GRAWTS; and
- Continuation of existing approved activities at the Glendell MIA until the end of approved mining operations at sites that are participants in the GRAWTS (i.e. 31 December 2039).

This Scoping Request outlines the proposed approval path and scope of the environmental assessment that will support the Modification application.

APPROVED OPERATIONS

Glendell

DA 80/952 was granted under Part 4 of the EP&A Act on 2 May 1983. It has subsequently been modified on five occasions.

The approved development under DA 80/952 includes the following activities:

- Extraction of up to 4.5 million tonnes per annum (Mtpa) of run of mine (ROM) coal using truck and excavator mining methods;
- Hauling of ROM coal to Mount Owen Mine for processing and transportation;
- Hauling of overburden and materials to and from Ravensworth East Mine;
- Transportation of up to 1 Mtpa of product coal to domestic power stations by conveyor; and
- Ancillary surface infrastructure (including the Glendell MIA) such as offices, workshop, access roads, communications, services and water management infrastructure.

The approved development layout is shown in **Figure 1**.

Condition 5 of Schedule 2 of DA 80/952 allows for mining operations to be carried out until the end of June 2026. 'Mining operations' is defined in the consent as including the removal and emplacement of overburden and extraction, processing, handling, storage and transport of coal on site. The note under Condition 5 of Schedule 2 of DA 80/952 states that:

"this consent will continue to apply in all other respects other than the right to conduct mining operations until the site has been rehabilitated and the offsets provided to a satisfactory standard."

The activities proposed by the Modification do not fall within the definition of 'mining operations'. Therefore, the Modification does not represent an extension of 'mining operations' under Condition 5 of Schedule 2 of DA 80/952.

Modification 2 to DA 80/952 (approved 25 February 2008) facilitated the integration of the Glendell and Mount Owen water management systems. Consequently, MOPL has consent to transfer water between the Glendell and Mount Owen components of MGO.

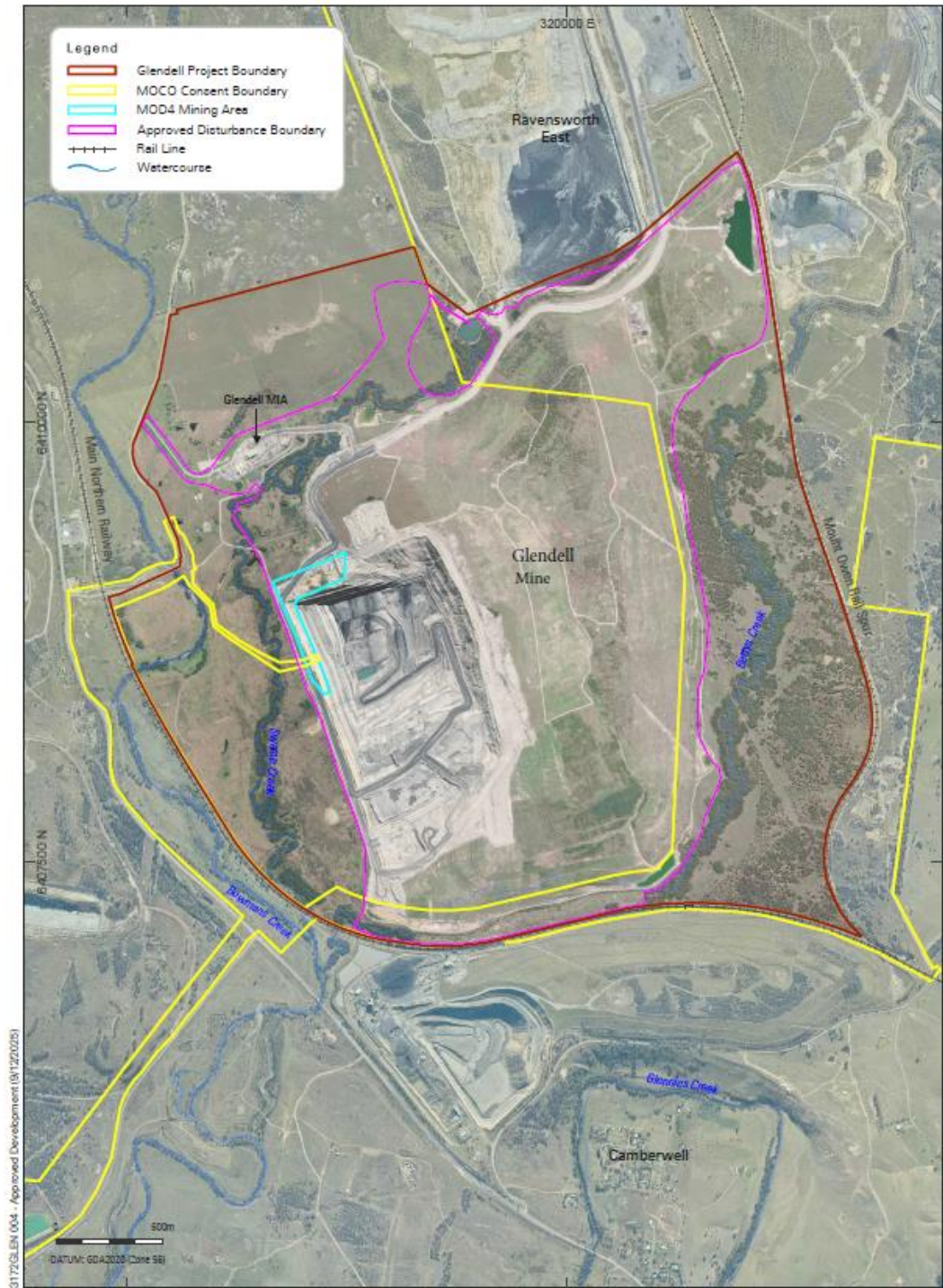
GRAWTS

The GRAWTS has been established through various modifications to the planning approvals of its participant sites, including the following modifications relevant to MGO:

- Modification 1 to SSD-5850 (Mount Owen) and Modification 7 to PA 08_0101 (Integra Underground), which facilitated the construction of a pipeline to transfer water from Integra Underground to Mount Owen;
- Modification 6 to SSD-5850, which facilitated the construction of the Narama Pipeline, which enables transfer of water between Ravensworth Operations and Mount Owen; and
- Modification 7 to SSD-5850, Modification 4 to PA 09_0176 (Ravensworth Operations) and Modification 8 to DA 305-11-01 (Liddell Mine), which removed any pre-existing volumetric limits on water transfers between these three operations.

Glendell's development consent (DA 80/952) has not directly been modified as part of any previous applications associated with GRAWTS. However, Mount Owen can receive water from and transfer water to the other GRAWTS participant sites under SSD-5850 and Glendell can receive water from and transfer water to Mount Owen pursuant to DA 80/952 Modification 2.

Figure 1 Approved Development Layout



GLENORE



GLENDALL MINE
Approved Development Layout

FIGURE 1

PROPOSED MODIFICATION

Water Storage in Barrett Pit

The Barrett Pit is approved to remain as a final void within the final landform for Glendell (as shown in Appendix 6 of DA 80/952). Under the approved development scenario, this void will receive passive inflows (i.e. groundwater seepage and catchment runoff) and form a final void lake. The Modification is seeking approval to transfer mine water to and from Barrett Pit, including water received from Mount Owen.

As explained in **Section** Error! Reference source not found., Glendell has approval to transfer water to and from Mount Owen, which has existing approval to share water with the other sites within the GRAWTS. No further approval is sought for transfers of water between different mining operations.

The Modification seeks to use Barrett Pit as a transfer point and water storage until 31 December 2039. This timeframe represents the duration of that currently approved mining operations that form part of the GRAWTS.

Water will be transferred to and from Barrett Pit primarily using existing infrastructure. If any other ancillary infrastructure is required for this purpose, such infrastructure will be located within the approved DA 80/952 disturbance area (see **Figure 1**).

Continuation of Ancillary Activities at the Glendell MIA

The Glendell MIA is used for ancillary mining activities including operational management, communications, services, training, administration and plant maintenance. These activities support other operations within the MGO complex conducted under SSD-5850. Given the synergies between MGO and the GRAWTS, the Modification seeks to confirm that ancillary activities at the Glendell MIA and connectivity with Mount Owen Mine will continue until 31 December 2039. MOPL's proposal to continue using the Glendell MIA for the benefit of the wider MGO complex has already been expressed through:

- The MGO Rehabilitation Management Plan required under Condition 37D of Schedule 3 of DA 80/952; and
- Reporting required under mining authorities granted under the *Mining Act 1992* (such as Forward Programs).

The Modification does not propose to alter the current use of the Glendell MIA. It merely clarifies that these uses will continue beyond the end of mining operations under DA 80/952, in order to continue serving the neighbouring mining operations that are participants in the GRAWTS.

PROPOSED APPROVAL PATHWAY

The proposed modification is sought under Section 4.55(2) of the EP&A Act. A development consent can only be modified under Section 4.55(2) if the consent authority is satisfied that the modified development would be 'substantially the same development'.

MOPL considers that the Modification would result in 'substantially the same development' for the following reasons:

- The transfer of water between MGO storages is an aspect of the approved Glendell development. The Modification merely proposes to continue using Barrett Pit as a water storage and transfer point during the post-mining phase;
- The Modification does not seek to change the layout or ancillary activities approved to be carried out within the Glendell MIA; and
- The Modification does not involve any changes to approved mining operations, such as mining footprint, methods, production rates, duration, operating hours and workforce.

SCOPE OF ENVIRONMENTAL ASSESSMENT

The Modification application under Section 4.55(2) of the EP&A Act will be supported by a Modification Report prepared with consideration of the '*State significant development guidelines – preparing a modification report*' (DPE, 2022).

Based on the nature of the Modification, the key environmental aspects requiring assessment are groundwater and surface water impacts. These assessments will consider whether the proposed Modification will result in an increased risk of:

- Outward seepage from Barrett Pit to the surrounding environment; and
- Uncontrolled discharges (overflows) during large storm events.

Both the surface water and groundwater assessments will be informed by numerical modelling undertaken to contemporary standards. These assessments have been substantially progressed, and preliminary results indicate that the proposed transfer of water to and from Barrett Pit is unlikely to result in either of the adverse impacts listed above.

All activities proposed by the Modification will occur within the approved DA 80/952 disturbance area. As such, no further assessment of disturbance impacts is required.

The continued use of the Glendell MIA is not expected to result in greater environmental impacts, as this element of the Modification does not propose enlargement of the MIA (i.e. no additional disturbance) or a change in the character or scale of approved activities.

The Modification Report will provide details on the rehabilitation schedule for Glendell, particularly the implications of the post-mining water management activities and ongoing use of the Glendell MIA.

Table 1 identifies the environmental aspects relevant to the Modification and the assessment scope proposed for the Modification Report. Although further assessment is not considered necessary for several of the environmental aspects listed in **Table 1**, these aspects will be discussed qualitatively in the Modification Report.

Table 1 Modification Environmental Aspects

| Aspect | Further Assessment Needed? | Justification |
|----------------------|----------------------------|--|
| Surface water | Yes | <p>A water balance will be completed to estimate the volumes that may be stored within, and transferred to and from the Barrett Pit. This will enable assessment of water levels, water quality and the risk of spills.</p> <p>The long-term equilibrium level will not be altered by the Modification, as Barrett Pit will need to be dewatered prior to final landform development. After mine closure, the water level within the final void will naturally rise as it would under the approved development scenario.</p> |
| Groundwater | Yes | <p>A groundwater assessment (including numerical modelling) will be undertaken to determine whether the proposed storage of mine water in the Barrett Pit may result in risk of seepage to the surrounding environment.</p> <p>This groundwater modelling will also be used to estimate inflows for the purposes of the GRAWTS water balance.</p> |
| Biodiversity | No | The Modification does not involve any disturbance outside of the approved disturbance footprint under DA 80/952. |
| Heritage | No | The Modification does not involve any disturbance outside of the approved disturbance footprint under DA 80/952. |
| Air quality | No | <p>Transfer of water to and from Barrett Pit will not involve any dust emissions.</p> <p>Ancillary activities at the Glendell MIA have already been accounted for in previous air quality assessments, and emissions during Glendell's post-mining phase will be significantly less than the predicted impacts during mining operations.</p> |
| Greenhouse Gas (GHG) | No | The Modification will only generate GHG emissions through energy consumption associated with transfer of water and ongoing use of the Glendell MIA. The 'NSW Guide for Large Emitters' (EPA, 2025) is not applicable as the Scope 1 & 2 emissions of the Modification will not exceed 25,000 tonnes CO ₂ -e (carbon dioxide equivalent) in any year. |
| Noise | No | <p>Noise generated by pumping equipment will be negligible in the context of mining operations in the locality.</p> <p>Ancillary activities at the Glendell MIA have already been accounted for in previous noise assessments, and noise levels during Glendell's post-mining phase will be significantly less than those predicted during mining operations.</p> |

| Aspect | Further Assessment Needed? | Justification |
|---------|----------------------------|--|
| Traffic | No | The Modification will not generate traffic movements as no additional personnel are required. |
| Social | No | The Modification will not require additional workforce, nor does it seek to alter approved site activities. As such, it is unlikely to generate any new social impacts or change the existing social dynamics in the area. |

STAKEHOLDER CONSULTATION

Given that the Modification relates to water management (and has secondary implications for the rehabilitation schedule), the following government agencies have been identified as relevant stakeholders:

- NSW Department of Climate Change, Energy, the Environment and Water – Water Group;
- NSW Environment Protection Authority; and
- Resources Regulator.

These agencies will be consulted to ascertain any specific matters that need to be addressed within the Modification Report.

Although the Modification is not expected to result in any off-site impacts, MOPL will consult with relevant community stakeholders for transparency. The outcomes of stakeholder consultation will be documented in the Modification Report.

CONCLUSION

We trust that this Scoping Request enables the Department to consider the approval path and scope of environmental assessment proposed for the Modification.

If you require any further information, please do not hesitate to contact the undersigned.

Regards;



Sébastien Moreno
 Environment & Community Manager
 Mt Owen/ Glendell Operations– GLENCORE
 E: sebastien.moreno@glencore.com.au