



**Areas**

	GFA	NSA
Residential	17,977m <sup>2</sup>	15,380m <sup>2</sup>
Carpark		0
Retail		GFA: 1,358m <sup>2</sup>

**Site (FSR 8.53:1)**

Building	99%	2,097m <sup>2</sup>
Hardscape	0%	0m <sup>2</sup>
Open Space	1%	11m <sup>2</sup>
<b>Total</b>		<b>2,108m<sup>2</sup></b>

**Urban**

Max Height (excluding Lift o/run, plant)	72.2m
Facade area	...
Floor facade	...
Basement area	8,574m <sup>2</sup>

● 226 out of a required 213 (106%) parking spaces are provided.

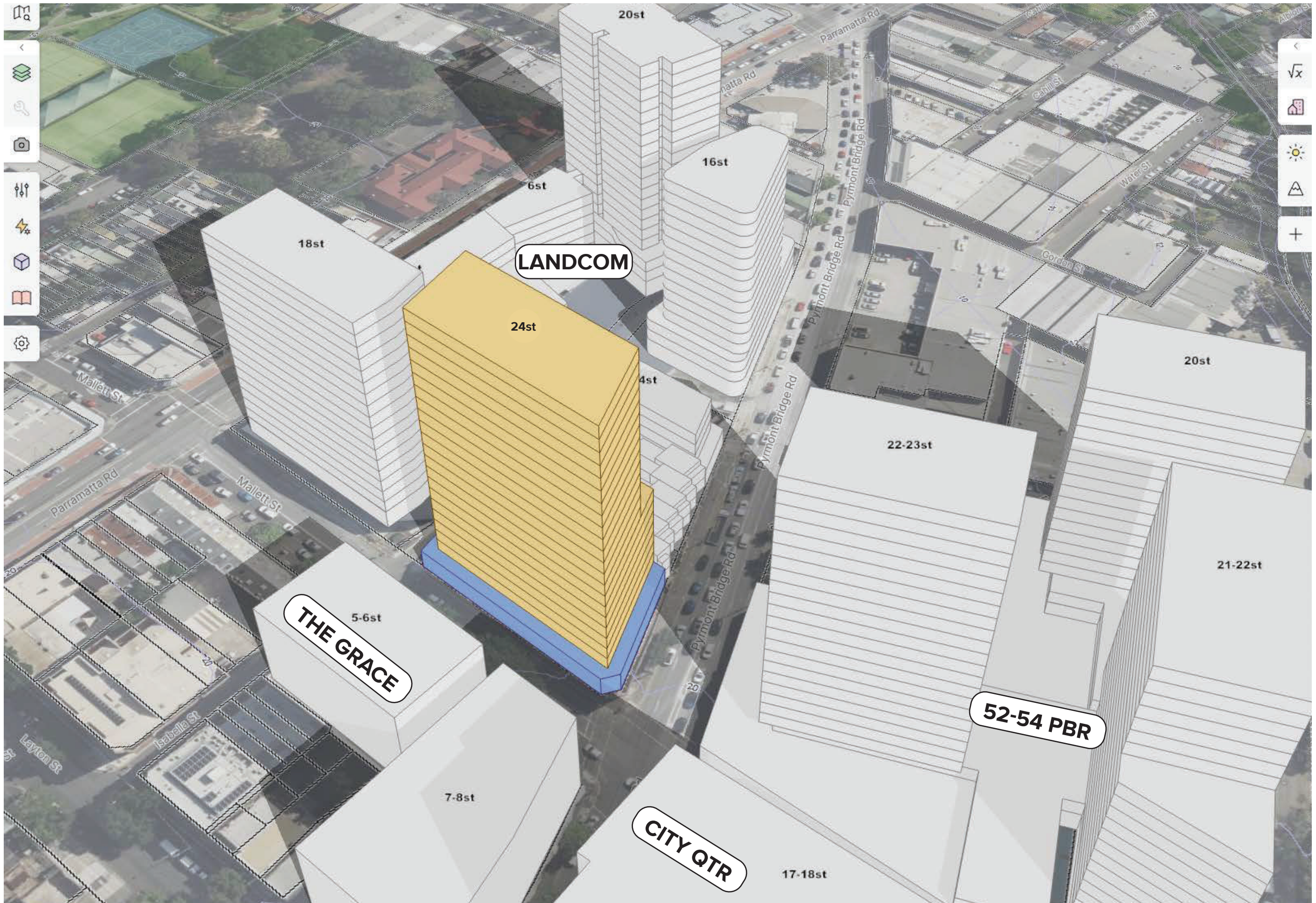
**Residential**

studio	0%	0
1 bed	20%	36
2 bed	65%	117
3 bed	15%	27
<b>Total</b>		<b>180</b>

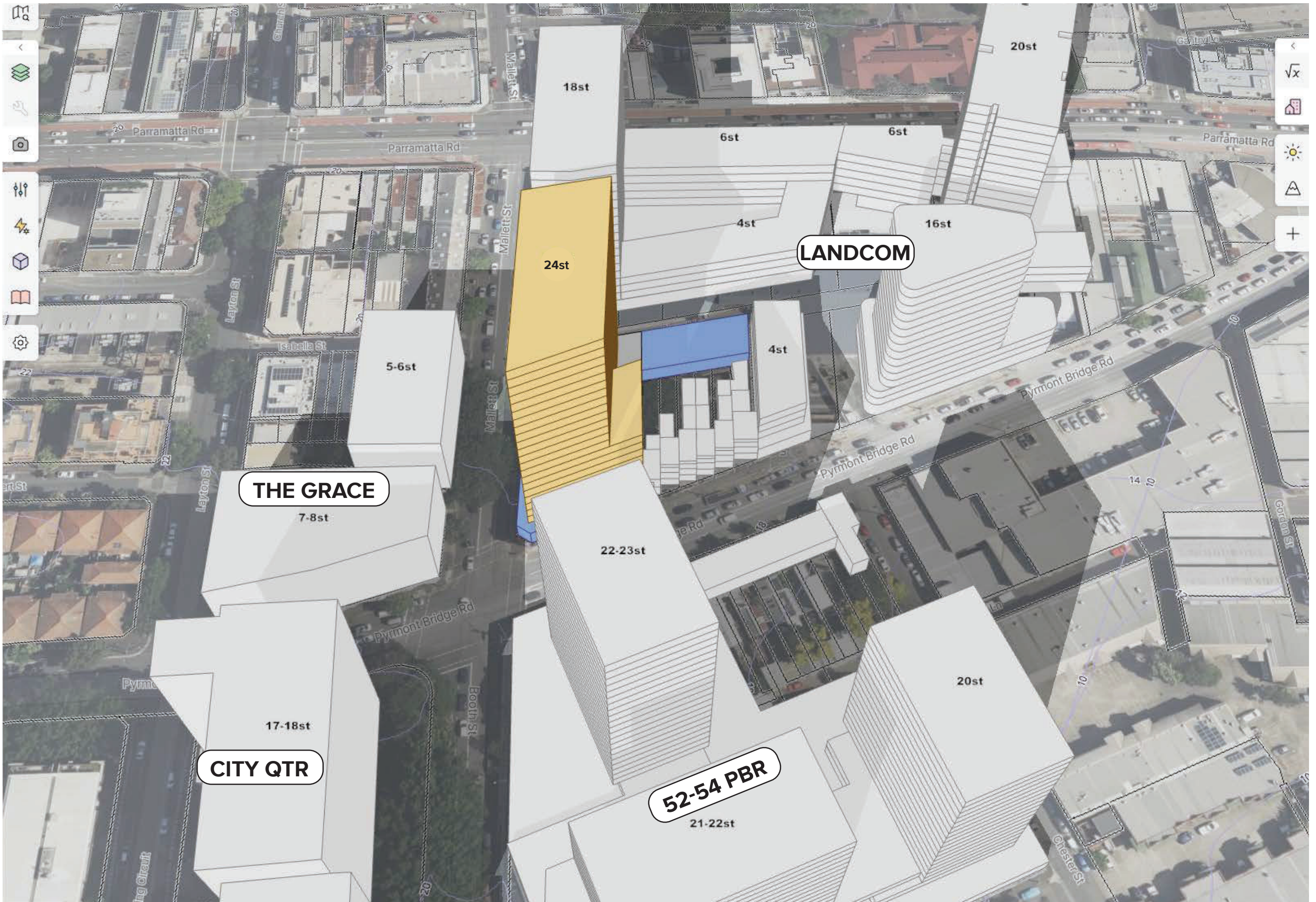
## KEY METRICS

- 1 Tower
- Height 80m, 24 Storeys
- FSR 8.53:1
- 18,000m<sup>2</sup> GFA
- 180 Dwellings
- c.1350m<sup>2</sup> Non-Residential

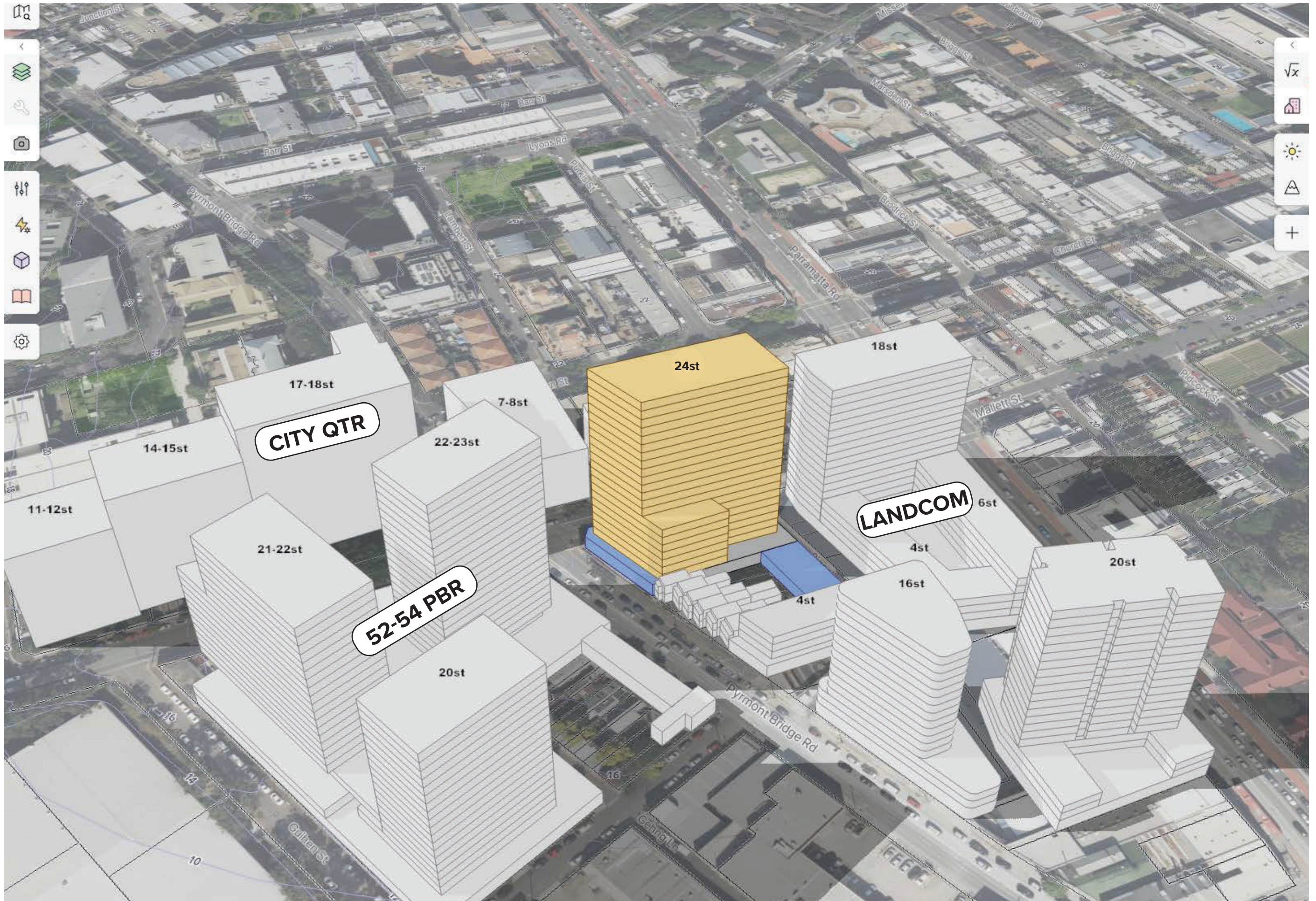
EXCLUDING TERRACE SITES - PLAN | SK1.01



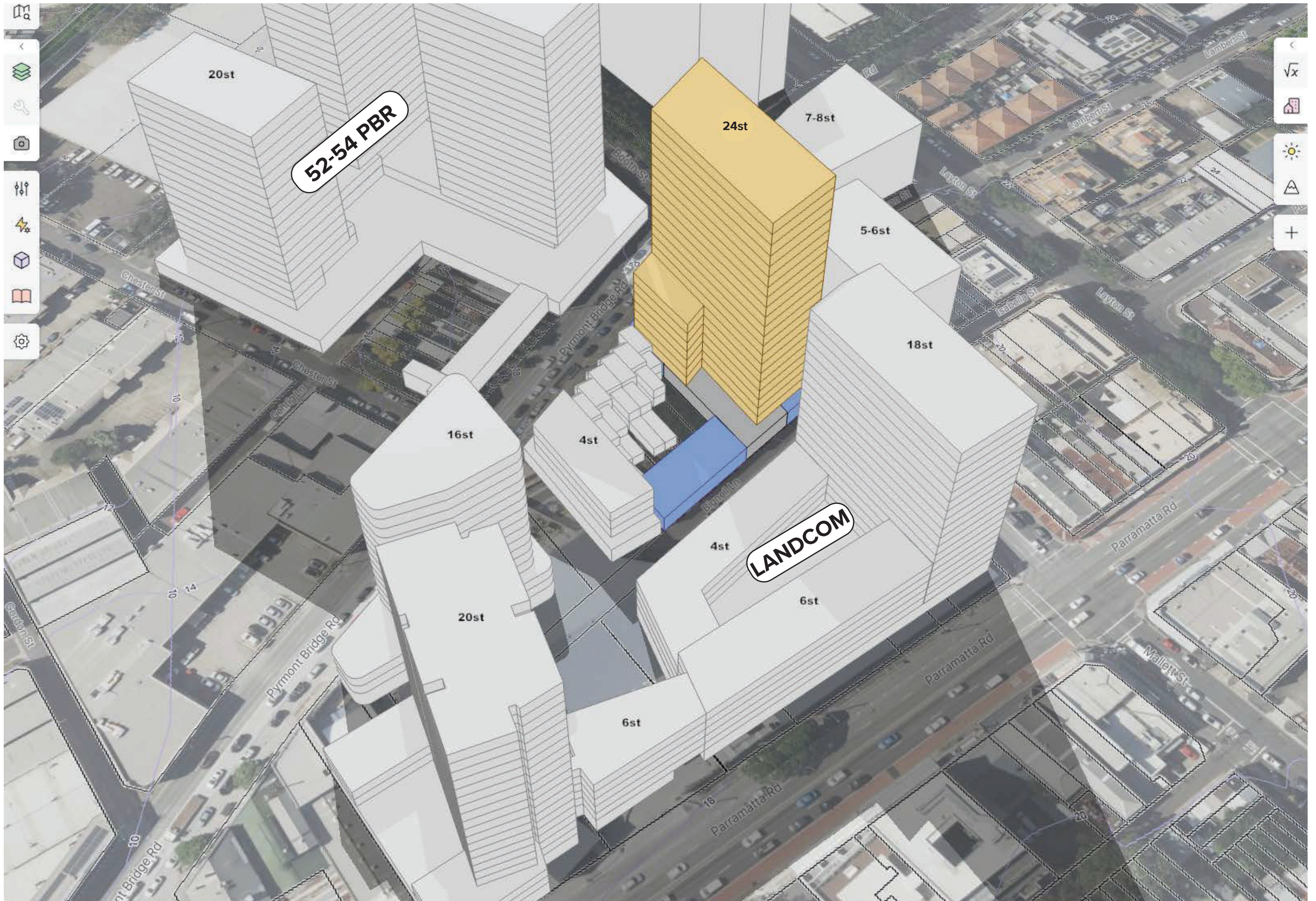
EXCLUDING TERRACE SITES - VIEW FROM NORTHEAST | SK1.02



**EXCLUDING TERRACE SITES - VIEW FROM NORTH | SK1.03**

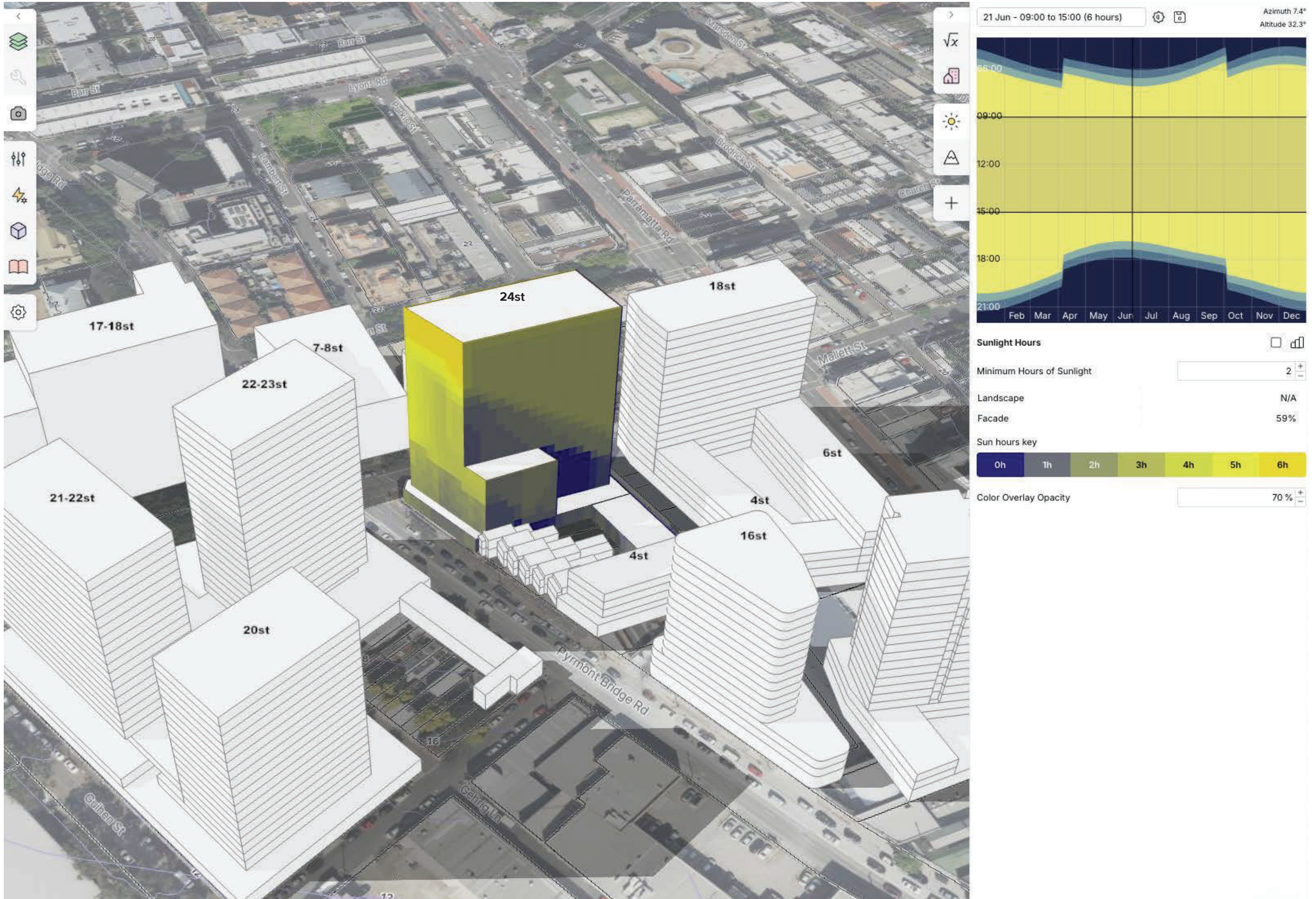


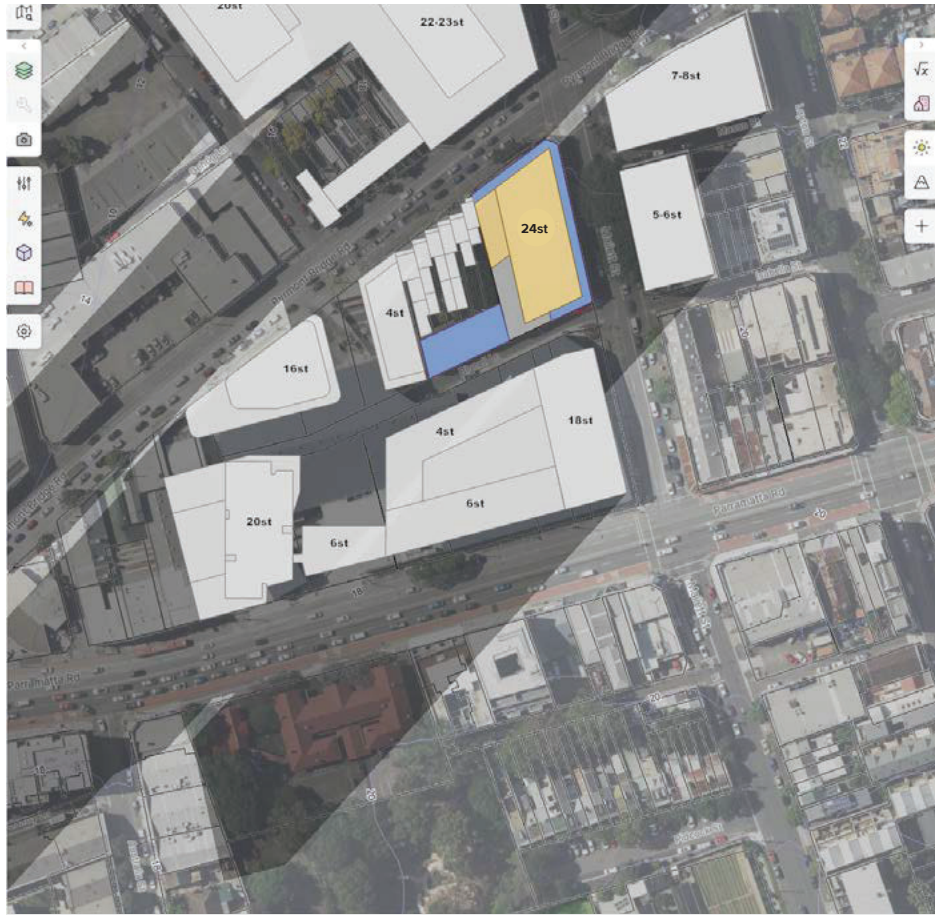
EXCLUDING TERRACE SITES - VIEW FROM WEST | SK1.04



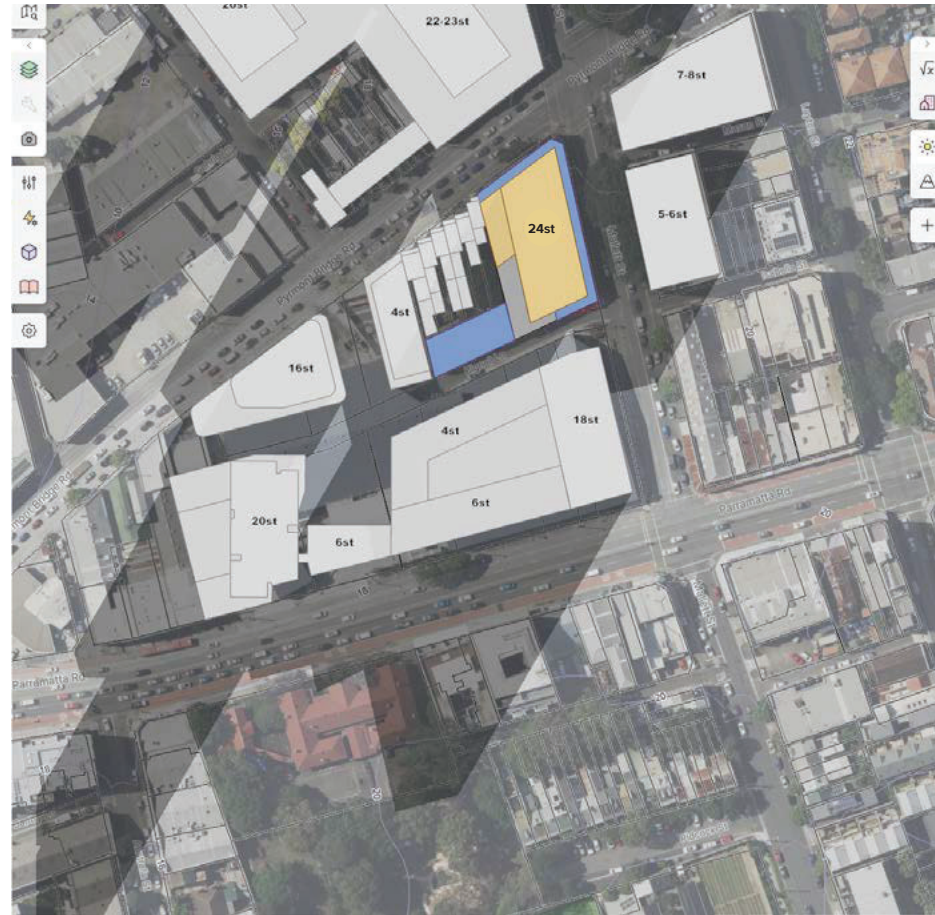
EXCLUDING TERRACE SITES - VIEW FROM SOUTH | SK1.05



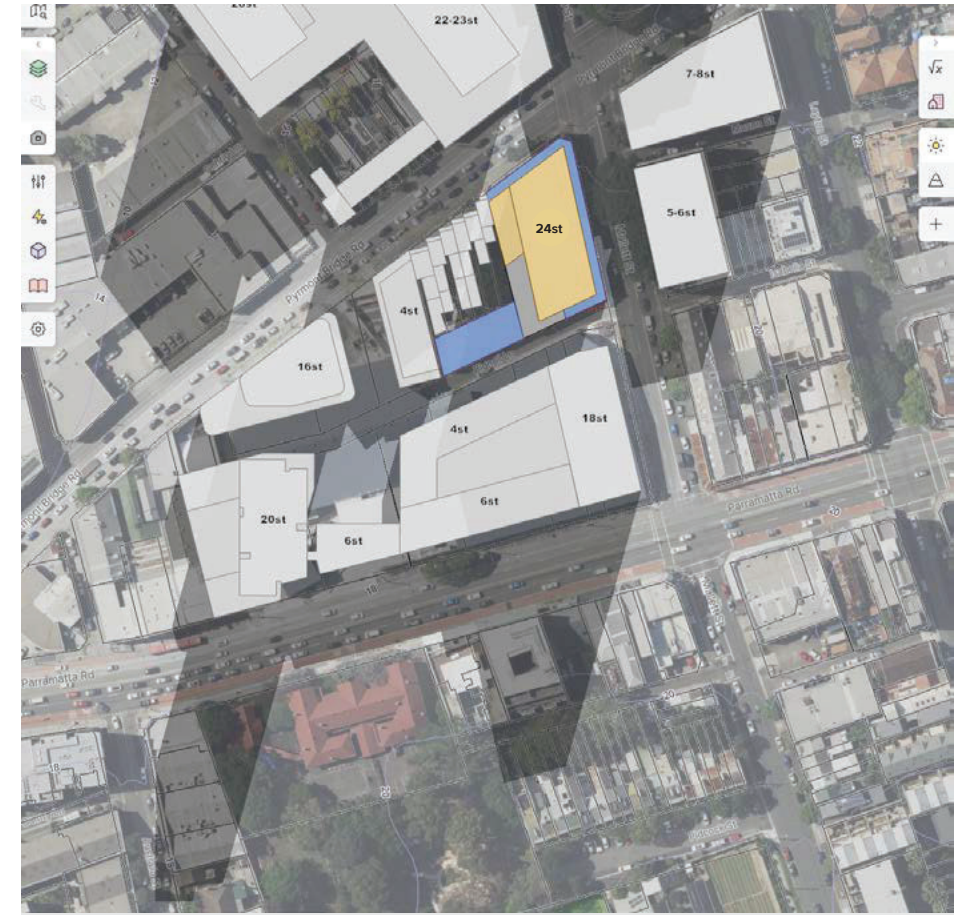




21 JUNE | 0900



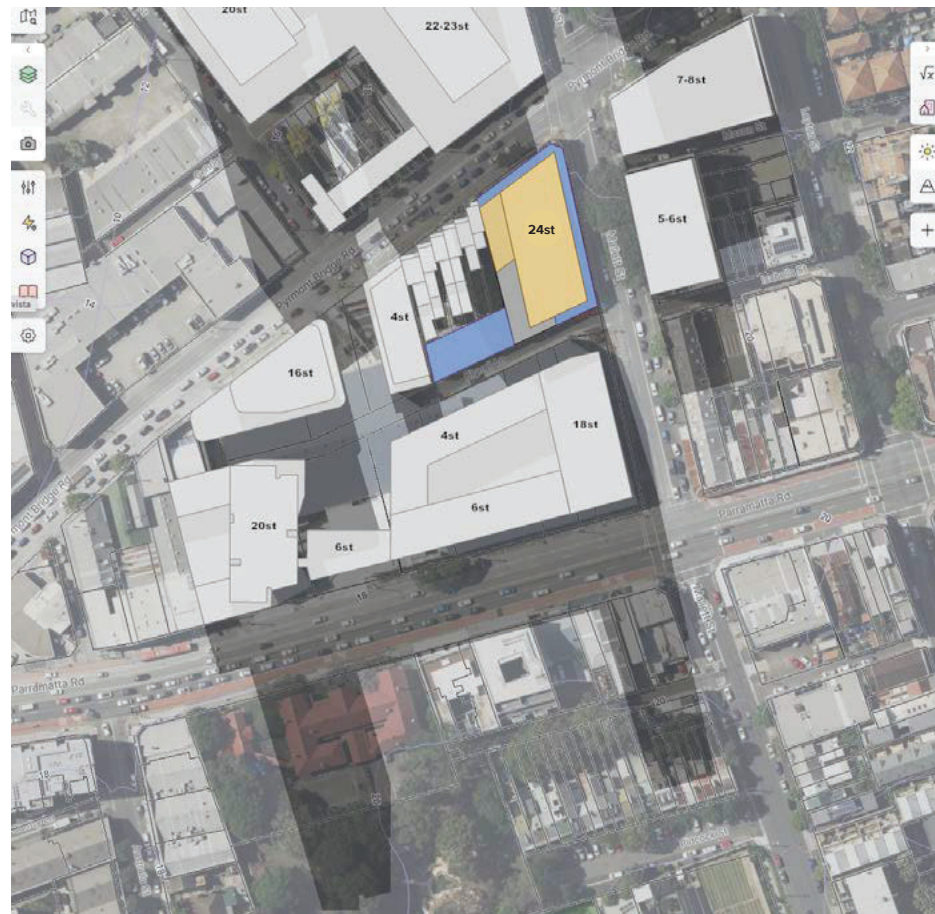
21 JUNE | 1000



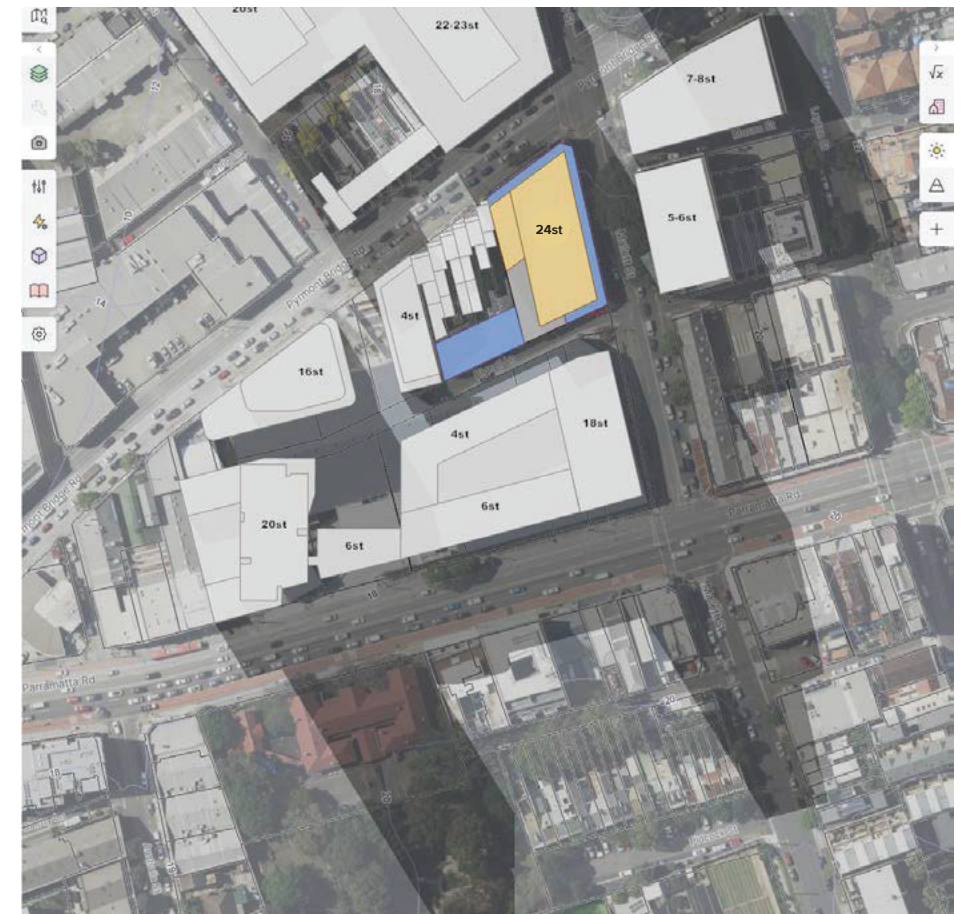
21 JUNE | 1100



21 JUNE | 1200

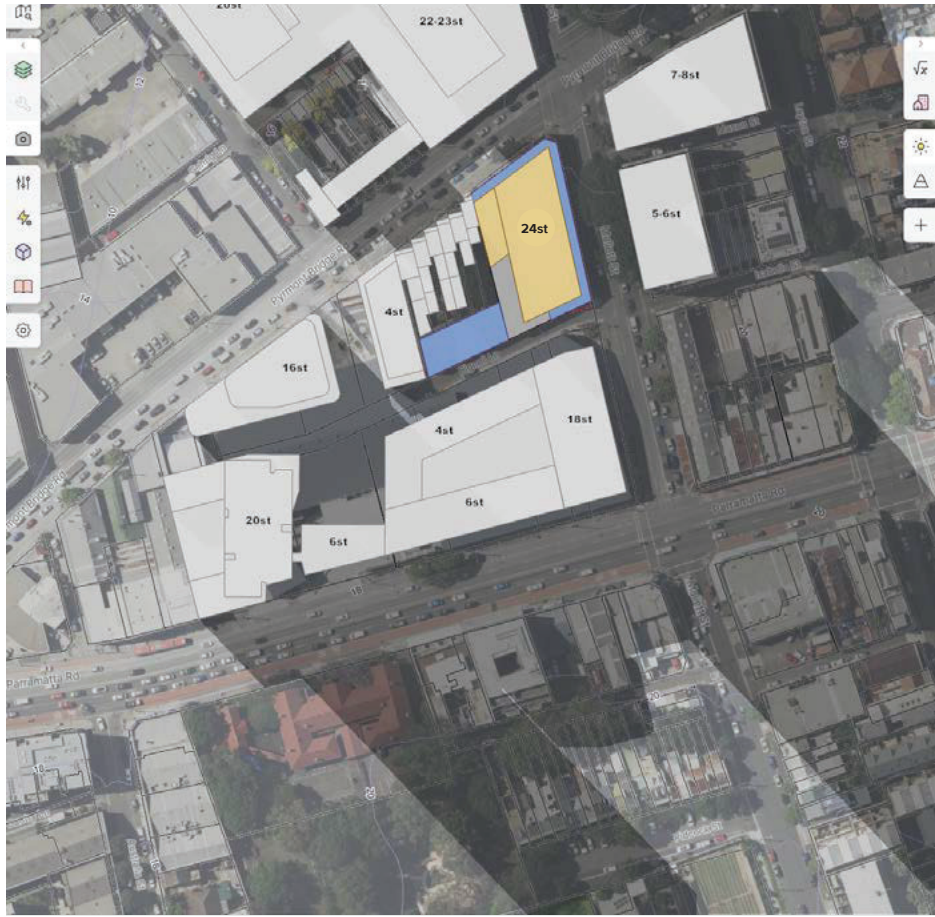


21 JUNE | 1300



21 JUNE | 1400

EXCLUDING TERRACE SITES - SHADOWS 21 JUNE | SK1.12



21 JUNE | 1500