

Prepared for Akaysha Energy

Community Engagement Summary Report

Murray Terminal Battery Energy Storage System - Scoping

August 2025

Project Number: 240892

Document verification

Project Title: Murray Terminal Battery Energy Storage System - Scoping

Project Number: 240892

Project File Name: Murray Terminal BESS Scoping Engagement Summary Report

Revision	Date	Prepared by	Approved by
Final	5/08/2025	Stephanie Ryder	Bree Schubach
Final	13/08/2025	Stephanie Ryder	Minor amendments
Final	22/08/2025	Stephanie Ryder	Minor amendments

NGH is committed to environmentally sustainable practices, including fostering a digital culture and minimising printing. Where printing is unavoidable, NGH prints on 100% recycled paper.

We acknowledge the Traditional Owners of this land and pay our respect to Elders past, present and emerging. We recognise that the First Nations peoples of Australia have traditionally managed the resources of this land in a sustainable way, and that they are the original custodians of the Australian environment.

Table of contents

- Executive summary 1**
- 1. Situational Context 1**
 - 1.1. Overview 1
 - 1.2. Design elements..... 1
- 2. Methodology 2**
 - 2.1. Stakeholder identification and analysis..... 2
 - 2.2. Engagement activities 7
- 3. Community and stakeholder feedback 9**
 - 3.1. Engagement activity feedback 9
 - 3.2. Feedback Survey 15
- 4. Findings 16**
 - 4.1. Key concerns and opportunities 16
 - 4.2. Overall sentiment 17
- 5. Future engagement recommendations 18**
 - 5.1. EIS engagement..... 18
 - 5.2. Ongoing strategic communications and robust engagement..... 18
 - 5.3. Monitoring and evaluation 19
- 6. Conclusion..... 20**

Figures

- Figure 2-1 Overview of engagement activities..... 7

Tables

- Table 2-1 Stakeholder identification 2
- Table 2-2 Engagement activities in detail 7
- Table 3-1 Engagement activities and stakeholder feedback 9
- Table 6-1 Opportunities and challenges 20

Appendices

Appendix A Community letter	A-I
Appendix B Non-associated receivers	B-II
Appendix C Drop-in community information session.....	C-I
Appendix D Project Fact Sheet	D-II
Appendix E Project FAQ Document	E-I
Appendix F Online Survey	F-II

Acronyms and abbreviations

BESS	Battery Energy Storage System
CBS	Community Benefit Scheme
CSES	Community and Stakeholder Engagement Strategy
CSP	Community Strategic Plan
DPHI	Department of Planning, Housing and Infrastructure (NSW) (formerly DPE)
DPIE	(Former) Department of Planning, Industry and Environment (NSW) (now DPE)
EIS	Environmental impact statement
ha	hectares
km	kilometres
LALC	Local Aboriginal Land Council
LEP	Local Environment Plan
LGA	Local government area
m	metres
MW	Megawatt
NEM	National Electricity Market
NSW	New South Wales
REZ	Renewable Energy Zone
SSD	State Significant Development
SVC	Snowy Valleys Council
VIA	Visual Impact Assessment
VPA	Voluntary Planning Agreement

Executive summary

Akaysha Energy (The Applicant) is proposing the development of the Murray Terminal Battery Energy Storage System (the Project). The Project would involve the construction, operation and decommissioning of a Battery Energy Storage System (BESS) with a capacity of up to approximately 500 Megawatts (MW) / 2000MWh (4 hours). The Project would connect directly into the existing 330kV Murray Terminal substation, located north of the Project site.

The Project would be located within the Snowy Valleys Council (SVC) Government Area (LGA), approximately 2 kilometres (km) south-east of the township Khancoban, New South Wales (NSW). The area of land that is being investigated for siting the Project (the Project Site) covers an area of approximately 10 hectares (ha).

The Project would assist in the stabilisation of the national energy grid, reduce energy wastage, ease peak demand, and support Australia’s transition to renewable energy. The Project is anticipated to produce approximately 150 jobs during the peak construction period, with approximately six roles expected once operational.

Methodology

A comprehensive stakeholder analysis was developed in May 2025 to inform the Community and Stakeholder Engagement Strategy (CSES). Engagement activities during the Scoping Phase of the NSW State Significant Development (SSD) application process for the Project focused on getting a base understanding of community sentiment, identifying potential impacts and possible mitigation measures, and preparing engagement recommendations for the Environmental Impact Statement (EIS). Engagement methods included one round of posted letters, emails, development of Project materials (Fact Sheet and FAQ), Project website, an online survey, community information drop-in session, and face-to-face and online meetings.

Community and stakeholder feedback

Feedback was gathered through several engagement activities. This included in-person conversations with approximately 15 community members at the community drop-in session, 313 posted letters, seven emails, five survey responses and two meetings (one online and one in-person) with Snowy Hydro. Opportunities and concerns were identified in relation to the Project and are outlined below.

Opportunities	Challenges
<ul style="list-style-type: none"> • Community benefit sharing • Local economic participation through opportunities for local employment • Economic injection through the use of ancillary services • Ongoing engagement. 	<ul style="list-style-type: none"> • Fire safety • Emergency response planning • Impacts on local environment and landscape • Accommodation and housing impacts • Visual amenity • Impacts on property values (for nearby neighbours)

	<ul style="list-style-type: none">• Clarity on Project purpose and operations.
--	--

Recommendations

To ensure effective community engagement throughout the EIS phase, it is advised that the Applicant continues proactive and transparent engagement with all key stakeholders, including non-associated receivers, SVC, elected representatives, First Nations groups, Snowy Hydro, and the broader Khancoban community as the Project progresses through the EIS stage. This includes reviewing the engagement findings in detail to determine appropriate mitigation strategies and ensuring these strategies are clearly communicated to affected stakeholders.

Ongoing two-way engagement should be prioritised, with regular written updates and, where possible, face-to-face meetings to address community questions and provide clarity on key issues such as fire and bushfire risk management, accommodation strategies, visual impacts, and local access arrangements.

The Applicant is encouraged to partner with community groups, including those experienced in energy infrastructure projects, the local RFS and local Landcare networks, to build informed community advocates and explore opportunities for collaboration. Developing a Community Benefit Scheme (CBS) in consultation with the community has the potential to deliver local infrastructure upgrades and community service enhancements, alongside continued discussions with SVC regarding a Voluntary Planning Agreement (VPA).

Engagement with First Nations groups should remain a priority to ensure cultural perspectives and connections to Country are incorporated into Project planning and decision-making.

Finally, ongoing monitoring and evaluation of engagement efforts will ensure that strategies are refined and adapted based on community feedback, leading to a more inclusive and responsive approach throughout the Project's lifecycle.

Conclusion

The sentiment towards the Project is majority neutral with appreciation for early engagement.

Moving forward, it is critical for the Applicant to explore the implementation of a CBS, mitigate any identified concerns where possible, continue to keep communication lines open, and maintain robust engagement efforts to ensure stakeholders are well-informed throughout the EIS phase and the wider SSD timeline.

1. Situational Context

1.1. Overview

The Applicant is proposing the development of the Murray Terminal Battery Energy Storage System (the Project). The Project would involve the construction, operation and decommissioning of a BESS with a capacity of up to approximately 500 Megawatts (MW) / 2000MWh (4 hours). The Project would connect directly into the existing 330kV Murray Terminal substation, located north of the Project site.

The Murray Terminal 330kV substation is a critical component of Australia's national electricity infrastructure, commissioned in 19644 by the Snowy Mountains Hydro-electric Authority. It forms part of the Snowy Scheme and connects approximately 1,5000 MW of hydroelectric energy generation to the National Energy Market (NEM).

The Project would be located within the SVC LGA, approximately 4 kilometres km south-east of the township Khancoban, New South Wales (NSW). The site address is **45 Waterfall Farm Road, Khancoban NSW 2642**. The area of land that is being investigated for siting the Project covers an area of approximately 10 ha.

The Project would contribute towards the stabilisation of the national energy grid, ease energy wastage, ease peak demand, and support Australia's transition to a renewable energy future through the implementation of a large-scale BESS.

1.2. Design elements

The Project would include the following key built form features:

- BESS including battery enclosures, inverters, transformers, switchgear and control room
- Connection to Transgrid's Murray Terminal 330kV Switching Station
- Permanent office, operation and maintenance (O&M) buildings, hardstands and Project signage
- Site access:
 - Main access off Alpine Way onto M2 Power Station Road to access the northern area of the Project Site
- Temporary construction infrastructure
- Internal roads.

The final Project Site that will be assessed in the EIS will be informed by community and stakeholder consultation, and detailed environmental investigations.

2. Methodology

2.1. Stakeholder identification and analysis

A full stakeholder identification and analysis was completed in May 2025 to inform the CSES. The focus of engagement activities for the Scoping Phase was to introduce the Project and work to understand, document, and assess community sentiment on the Project, and preparing engagement recommendations for the Applicant as the Project moves through to the EIS phase. The quality of the relationship with all stakeholders mentioned below is neutral.

Table 2-1 Stakeholder identification

Stakeholder group	Subsection	Description	Interest	Influence	Engagement needs and/or expectations	Engagement approach
Non-associated receivers	Adjacent and near neighbours (shown in Appendix B).	<ul style="list-style-type: none"> Residential properties within a 1 km in the first instance and 2 km (pending Noise Assessment) radius of the proposed site. 	<ul style="list-style-type: none"> Impacts from Project and likely mitigations Neighbour benefit sharing options directly Project information generally Opportunities to raise issues and provide feedback. 	High	<ul style="list-style-type: none"> Consistent engagement Opportunity for discussions and feedback Face-to-face discussions Personalised relationships Discussions regarding impacts and possible mitigations Collaborative approach towards mitigation development. 	<p>Inform, consult, involve, collaborate</p> <p>Consultation with this group will involve phone calls, distributing letters, invitations to the community drop-in session and a direct face-to-face meeting (where requested).</p>
Federal Government	Member for Eden-	<ul style="list-style-type: none"> Hon Kristy 	<ul style="list-style-type: none"> Overseeing 	High	<ul style="list-style-type: none"> Ongoing project updates 	<p>Inform, consult, involve</p>

Stakeholder group	Subsection	Description	Interest	Influence	Engagement needs and/or expectations	Engagement approach
	Monaro	McBain MP – Minister for Regional Development, Local Government and Territories	<ul style="list-style-type: none"> regional development projects Infrastructure funding Community engagement. 		<ul style="list-style-type: none"> Information readily available Opportunity for discussions and feedback Identification of benefits. 	This group should be engaged directly through phone calls, emails, distributing letters, and a direct face-to-face meeting where possible.
State Government	Member for Albury	<ul style="list-style-type: none"> Mr Justin Clancy MP – Member for Albury 	<ul style="list-style-type: none"> State-level infrastructure Education Regional development. 	High	<ul style="list-style-type: none"> Ongoing engagement regarding updates Information readily available Opportunity for discussions and feedback Identification of benefits. 	<p>Inform, consult, involve</p> <p>This group should be engaged directly through phone calls, emails, distributing letters, and a direct face-to-face meeting where possible.</p>
Local Government	Snowy Valleys Council	<ul style="list-style-type: none"> Governing local authority for Khancoban 	<ul style="list-style-type: none"> Local planning approvals Infrastructure development Community benefit sharing Community services. 	High	<ul style="list-style-type: none"> Ongoing engagement regarding updates Identification of benefits Discussions regarding use of Council roads, etc. 	<p>Inform, consult, involve</p> <p>This group should be engaged directly through phone calls, emails, distributing letters, and a direct face-to-face meeting where possible.</p>

Stakeholder group	Subsection	Description	Interest	Influence	Engagement needs and/or expectations	Engagement approach
Traditional Owners	Traditional Owners of the Khancoban region	<ul style="list-style-type: none"> Ngarigo Nation Indigenous Corporation Inc Bega Valley LALC. 	<ul style="list-style-type: none"> Protection of cultural heritage Land rights Involvement in land management. 	High	<ul style="list-style-type: none"> Engagement to occur face-to-face, not technology focused Open and transparent dialogue Opportunity for discussions and feedback To be listened to Personalised relationships formed Participation in benefits development Feelings of empowerment with decision making. 	<p>Inform, consult, involve, collaborate, empower</p> <p>This group should be engaged through community drop-in sessions, meetings and project update emails.</p> <p>The approach is to ensure we create meeting opportunities that are best suited to this stakeholder group, mitigating participation barriers where possible. E.g. a walk on Country and/or a listen and yarn activity.</p>
Emergency Services	<ul style="list-style-type: none"> NSW RFS - Bringenbrong Brigade, Fire station Khancoban Police Station Khancoban SES. 	<ul style="list-style-type: none"> Local emergency response unit Local law enforcement. 	<ul style="list-style-type: none"> Emergency preparedness Response planning Public safety. 	High	<ul style="list-style-type: none"> Ongoing engagement regarding updates Information readily available Face-to-face discussions Discussions regarding issues mitigation, opportunities. 	<p>Inform, consult, involve</p> <p>This group should be engaged directly through phone calls, distributing letters, and a direct face-to-face meeting where possible. Ideally, communications to this group would make use of the project web page/site.</p>

Stakeholder group	Subsection	Description	Interest	Influence	Engagement needs and/or expectations	Engagement approach
Educational Institutions	<ul style="list-style-type: none"> Khancoban Public School 	Local primary school	<ul style="list-style-type: none"> Educational opportunities Student safety Community involvement. 	Moderate	<ul style="list-style-type: none"> Ongoing engagement regarding updates Information readily available Opportunity for discussions and feedback Identification of possible opportunities and participation. 	<p>Inform, consult</p> <p>Outside of the non-associated receivers identified, this group should be engaged through broader communications during the Scoping phase through a community open drop-in session, and communications through the council.</p> <p>Ideally, communications to this group would make use of the Project web page/site.</p>
Community Organisations and Businesses	Local community groups and businesses (who may be interested in participating in aspects of the Project).	<ul style="list-style-type: none"> Khancoban United Volunteer Association (KUVA) Khancoban Landscare Group Khancoban Events Inc Pickled Parrot Providore Alpine Inn Alpine Café 	<ul style="list-style-type: none"> Project impacts Community welfare Identify opportunities to develop or utilise local capability. Environmental protection Local engagement. 	Moderate	<ul style="list-style-type: none"> Ongoing engagement regarding updates Information readily available Opportunity for discussions and feedback Identification of possible opportunities and participation. 	<p>Inform, consult</p> <p>Outside of the non-associated receivers identified, this group should be engaged through broader communications during the Scoping phase through a community open drop-in session, and communications through the council.</p>

Community Engagement Summary Report

Murray Terminal Battery Energy Storage System - Scoping

Stakeholder group	Subsection	Description	Interest	Influence	Engagement needs and/or expectations	Engagement approach
		<ul style="list-style-type: none"> Khancoban Lakeside Caravan Park. 				Ideally, communications to this group would make use of the Project web page/site.
Media & Communications	Local Newspapers	<ul style="list-style-type: none"> Regional news outlets covering Khancoban 	<ul style="list-style-type: none"> Dissemination of information Public opinion shaping Community engagement. 	Moderate	<ul style="list-style-type: none"> Information readily available Opportunity to provide comment. 	<p>Inform, consult, collaborate</p> <p>This group should be engaged through broader communications during the Scoping phase through a community open drop-in session, a public notice (print) and communications from the Applicant.</p> <p>Ideally, communications to this group would make use of the project web page/site.</p>

2.2. Engagement activities

Based on the stakeholder analysis (outlined in section 2.1), a stakeholder register was developed which enabled the distribution of materials and consultation with both the wider community as well as identified stakeholders.

In summary, this report has been informed by the following engagement activities:

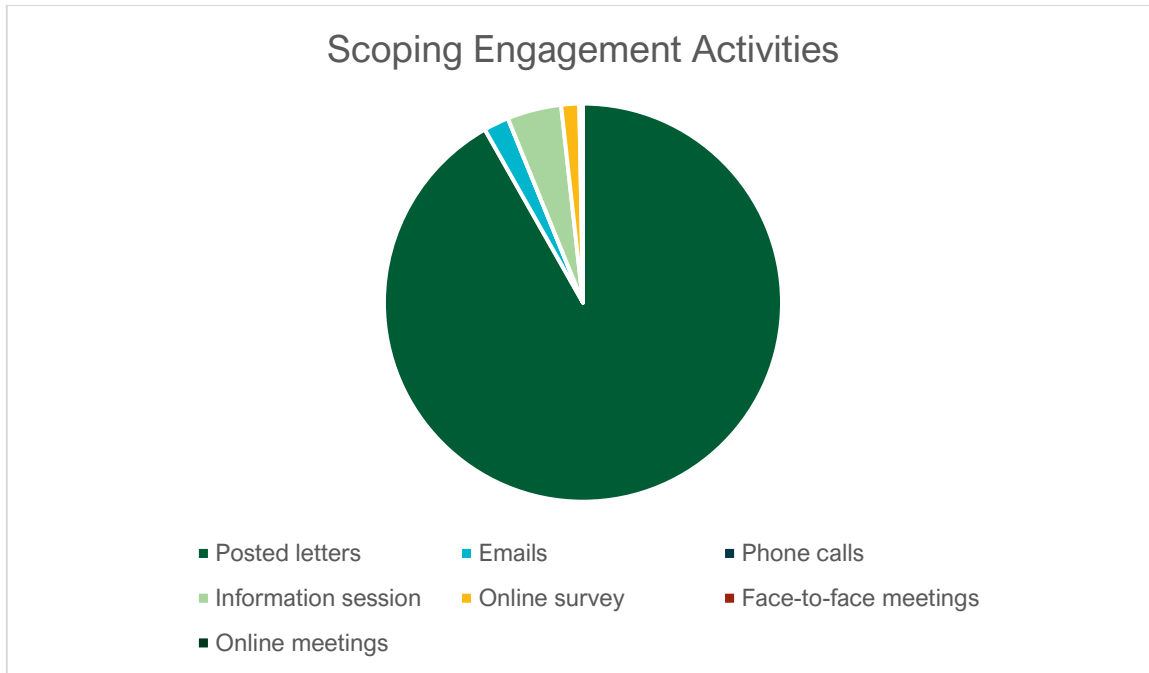


Figure 2-1 Overview of engagement activities

Table 2-2 Engagement activities in detail

How	Who	Why	When
Posted letters (Error! Reference source not found.)	Non-associated receivers within 4 km of the Project site (Appendix A) <ul style="list-style-type: none"> 313 letters posted (identifiable addresses) 	Introduce the Project, invite the community to attend the drop-in session, information on how to complete the community feedback survey, and how to contact the Project team.	18 June 2025
Emails	Targeted stakeholders <ul style="list-style-type: none"> 7 emails 	Introduce the Project, invite to community information day, invitation for further discussion.	Between 15 June and 23 June 2025
Phone calls	Non-associated receivers, First Nations Groups, and other identified stakeholders.	Introduce the Project, invitation to an in-person meeting, and discuss potential CBS.	Between 15 June and 23 June 2025

How	Who	Why	When
	<ul style="list-style-type: none"> 7 phone calls 		
Drop-in community information session (Appendix C)	Non-associated receivers, wider community members, and other identified stakeholders. <ul style="list-style-type: none"> Approximately 15 attendees 	Introduce the Project, meet the Project team, answer questions, discuss potential CBS.	12- 4 pm Saturday 12 July 2025 Alpine Inn
Fact sheet (Error! Reference source not found.)	All stakeholders where possible. <ul style="list-style-type: none"> Available at drop-in session Available on Project website 	To introduce the Project and provide information on Project.	Distributed from July 2025
FAQ document (Appendix E)	All stakeholders where possible. <ul style="list-style-type: none"> Available at drop-in session Available on Project website 	To answer frequently asked questions on the Project.	Distributed from July 2025
Online survey (Appendix F)	Wider community. Available on Project website, included in information distributed to community. <ul style="list-style-type: none"> 5 responses received 	To request feedback on the Project to help inform mitigations and build on potential CBS.	Available from 1 June to 4 August 2025
Face-to-face meetings	<ul style="list-style-type: none"> Snowy Hydro 	To introduce the Project, understand concerns, request feedback, and help inform mitigations.	11 July 2025
Online meetings	<ul style="list-style-type: none"> Snowy Hydro SVC 	To introduce the Project, understand concerns, request feedback, and help inform mitigations, discuss VPA expectations with SVC.	17 July – 22 August 2025
Project website	Wider community <ul style="list-style-type: none"> 161 website visits between 18 June and 23 July 2025 	To introduce the Project and answer known questions.	Ongoing

3. Community and stakeholder feedback

3.1. Engagement activity feedback

Several emails, face-to-face meetings and an information session were facilitated with Council, elected representatives, professional consultees, non-associated receivers, and community members. The table below outlines the stakeholder feedback received.

Table 3-1 Engagement activities and stakeholder feedback

Stakeholder	Meeting type	Concerns/comments	Actions and highlighted interests
<p>Snowy Valleys Council</p>	<ul style="list-style-type: none"> Email introducing the Project sent on June 23, 2025 Emails exchanged 12 August 2025 Online meeting facilitated Friday 22 August 2025. 	<ul style="list-style-type: none"> The Applicant sent an email introducing Project and themselves as the Applicant. Provided information on the Project’s status, information on community benefit sharing, details on community engagement sessions and an invitation to meet in-person or online to discuss further. Online meeting facilitated on Friday 22 August 2025. Discussions included the community consultation process, Project timeframes, number of workers, Snowy Hydro works, workers accommodation (queries regarding accommodation camp), bushfire mitigation, biodiversity studies, site selection, and invitation to Council meeting. Discussion regarding CBS and VPA, with Council’s preference for funds to be administered through new LGA-wide policy. Made reference to new LGA-wide policy currently in development. The Applicant raised future approvals for landholder consent, waste, water, and road upgrades. 	<ul style="list-style-type: none"> Introduced the Project and the Applicant Requested in-person meeting or online meeting Ongoing discussion regarding VPA/CS Ongoing engagement.

Stakeholder	Meeting type	Concerns/comments	Actions and highlighted interests
Member for Riverina Michael McCormack MP	<ul style="list-style-type: none"> Letter sent via email on 23 June 2025 Receipt of email confirmed on 23 June 2025. 	<ul style="list-style-type: none"> The Applicant sent a letter (via email) introducing the Project and themselves as the Applicant. Provided information on the Project’s status, information on community benefit sharing, details on community engagement sessions and an invitation to meet in-person or online to discuss further. 	<ul style="list-style-type: none"> Introduced the Project and the Applicant Requested in-person meeting or online meeting Ongoing engagement.
State Member for Albury Mr Justin Clancy	<ul style="list-style-type: none"> Letter sent via email on 23 June 2025 No response received to date. 	<ul style="list-style-type: none"> The Applicant sent a letter (via email) introducing the Project and themselves as the Applicant. Provided information on the Project’s status, information on community benefit sharing, details on community engagement sessions and an invitation to meet in-person or online to discuss further. 	<ul style="list-style-type: none"> Introduced the Project and the Applicant. Requested in-person meeting or online meeting. Ongoing engagement.
Ngarigo Nation Indigenous Corporation	<ul style="list-style-type: none"> Email sent 20 June No response received to date. 	<ul style="list-style-type: none"> The Applicant sent an email introducing the Project and themselves as the Applicant. Provided information on the Project’s status, information on community benefit sharing, and an invitation to meet in-person to discuss further. 	<ul style="list-style-type: none"> Introduced the Project and the Applicant Requested in-person meeting Ongoing engagement.
Bega Valley Local Aboriginal Land Council (LALC)	<ul style="list-style-type: none"> Email sent 20 June No response received to date. 	<ul style="list-style-type: none"> The Applicant sent an email introducing the Project and themselves as the Applicant. Provided information on the Project’s status, information on community benefit sharing, and an invitation to meet in-person to discuss further. 	<ul style="list-style-type: none"> Introduced the Project and the Applicant Requested in-person meeting Ongoing engagement.

Stakeholder	Meeting type	Concerns/comments	Actions and highlighted interests
Khancoban RFS	<ul style="list-style-type: none"> Email sent 20 June Met in-person at the Community Information Session 	<ul style="list-style-type: none"> The Applicant sent an email introducing the Project and themselves as the Applicant. Provided information on the Project’s status, information on community benefit sharing, and an invitation to meet in-person to discuss further. Response received thanking for enquiry, with notice they will respond ASAP. Representative from Khancoban RFS attended community information session to discuss the Project further. Discussed fire and bushfire management and emergency management procedures. 	<ul style="list-style-type: none"> Introduced the Project and the Applicant Requested in-person meeting Ongoing engagement.
Khancoban SES	<ul style="list-style-type: none"> Email sent 20 June No response received to date. 	<ul style="list-style-type: none"> The Applicant sent an email introducing the Project and themselves as the Applicant. Provided information on the Project’s status, information on community benefit sharing, and an invitation to meet in-person to discuss further. 	<ul style="list-style-type: none"> Introduced the Project and the Applicant Requested in-person meeting Ongoing engagement.
Snowy Hydro Snowy Area Manager	<ul style="list-style-type: none"> In-person meeting on 11th July 2025 Online meeting 17th July 2025 	<ul style="list-style-type: none"> In-person meeting facilitated with Snowy Hydro to introduce the Project and Akaysha Energy as the Applicant Discussed impacts on local community such as accommodation availability and the local impact more broadly (through both Projects operating in the area). Discussed the probability of the Project going ahead. 	<ul style="list-style-type: none"> Introduced the Project and the Applicant Provided information material Project considerations: <ul style="list-style-type: none"> Temporary accommodation impacts

Stakeholder	Meeting type	Concerns/comments	Actions and highlighted interests
			<ul style="list-style-type: none"> ○ Local impacts more broadly ○ Commercial arrangements ○ Temporary workforce impacts ● Ongoing engagement.
<p>Drop-in community information session attendees</p> <ul style="list-style-type: none"> - 15 attendees in total - Nine detailed discussions - Remaining six collected materials to take away 	<ul style="list-style-type: none"> ● Community information drop-in session 12 July 2025 	<ul style="list-style-type: none"> ● 15 people attending the community information session, with nine in-depth conversations facilitated (remaining six attendees just dropped by to collect materials) ● Questions were raised about who owns the proposed Project site and whether the landowner had been engaged. ● Attendees sought clarity on the Project’s battery’s function. ● Attendees questioned how the Project would interact with Snowy Hydro’s infrastructure. ● Technical questions regarding the substations capacity and how load sharing between NSW and VIC was also raised, with queries on the NEM’s grid resilience. ● Fire safety emerged as a key community concern, with locals citing previous bushfire experiences, particularly during the 2019/2020 Black Summer bushfire event. ● Concerns were raised about the site’s proximity to fire-prone areas, natural bushland and surrounding national parks. A desire for transparency around site selection was noted. 	<ul style="list-style-type: none"> ● Explained the Project and introduced the Applicant ● Provided information material ● Project considerations: <ul style="list-style-type: none"> ○ Environmental impacts – fire management, run off ○ CBS ○ Temporary accommodation impacts ● Ongoing engagement.

Stakeholder	Meeting type	Concerns/comments	Actions and highlighted interests
		<ul style="list-style-type: none"> • Representatives from the Rural Fire Service (RFS) attended the information session and discussed the Project and its location. This offered local expertise and highlighted the importance of integrated emergency planning and bushfire risk mitigation within the Project. • Attendees sought clarity on the Project’s battery’s function. • Attendees questioned how the Project would interact with Snowy Hydro’s infrastructure. • Community members also raised concerns about impacts to surrounding national environments – particularly regarding waterways - with concerns of toxic leakage into nearby dams. • These concerns highlighted interest into how the Project would ensure the protection of water systems and the broader environment surrounding the Project. • Concerns were raised in regard to accommodation during construction of the Project, particularly due to the impact of Snowy Hydro’s new housing developments. • This also highlighted concerns into the Project impacting local rental affordability. Such concerns saw that increases in rent would potentially displace seasonal and lower-income workers, particularly Parks and Wildlife staff who arrive in the summer season. • Suggestions were made towards the Project’s CBS, with recommendations towards supporting local food resilience and emergency preparedness, particularly in the face of natural disasters (such as bushfires). 	

Community Engagement Summary Report

Murray Terminal Battery Energy Storage System - Scoping

Stakeholder	Meeting type	Concerns/comments	Actions and highlighted interests
		<ul style="list-style-type: none">Attendees offered local knowledge and flagged preference for ongoing two-way engagement rather than one-off sessions.Attendees expressed appreciation for early engagement opportunities and expressed strong interest in staying involved through the NSW SSD process.	

3.2. Feedback Survey

The community feedback survey was developed to inform the preliminary SIA and associated worksheet and was available for community members to complete via the posted letter, fact sheet, and emails.

The survey contained 23 questions. A total of five (5) responses were received, and a summary of the data is included below.

- Of the five [5] respondents, one [1] lived within 1km of the Project site, two [2] lived within 1-2 km of the Project site, one [1] lived within 2-4 km of the Project site, and one [1] doesn't live in the area but owns property locally.
- Two [2] respondents strongly opposed the Project, one [1] somewhat opposed the Project, and two [2] respondents had a neutral attitude towards the Project.
- When asked why they respondents were interested in the Project, the following was nominated:
 - One [1] respondent was interested in seeking potential work with the Project
 - Two [2] respondents were interested due to proximity to their residence
 - One [1] respondent was interested due to potential negative impacts to the local area
 - One [1] respondent was wanting to build their understanding of the Project.
- When considering the values of the local area, all respondents [5] nominated community and family ties and recreational opportunities (including sporting, fishing, nature based etc.).
- When considering potential impacts of large-scale renewable energy developments generally, all respondents [5] nominated concerns towards visual impact. Four [4] respondents also nominated effects on land use, effects on land values, and effects on natural areas or habitats.
- When considering potential **environmental** impacts from the proposed Project, the following were considered important:
 - Four [4] respondents selected fire management practices **and** waste management procedures
 - Three (3) respondents selected native vegetation impacts **and** impacts to waterways
 - Two (2) respondents selected reduction of carbon emissions/action on climate change.
- When considering **social and economic** impacts of the proposed Project, the following were considered important:
 - All five [5] respondents selected engagement with near neighbours
 - Four [4] respondents selected the disruption to community cohesion
 - Three [3] respondents selected potential impacts to property values **and** cultural heritage
 - Two [2] respondents selected community benefit opportunities from the Project.
- When considering **amenity** factors of the proposed Project, the following were considered important:
 - All five [5] respondents selected visual impacts for near neighbours **and** transportation planning and use of local roads
 - Four [4] respondents selected potential noise impacts for near neighbours
 - Three [3] respondents selected temporary construction impacts (i.e. noise, traffic, dust).

4. Findings

4.1. Key concerns and opportunities

The feedback received throughout the Scoping engagement phase presented a range of perspectives and inputs for the Applicant to consider. The following conclusions can be drawn:

The biggest opportunities were identified as:

- CBS
- Local economic participation through opportunities for local employment (explicitly stated by one survey respondent)
- Early engagement was seen favourably and identifies an opportunity to build trust and address concerns through transparent communication and technical clarity as the Project progresses.

The biggest concerns and/or challenges that were identified were:

- Fire safety was identified as a primary concern, strongly influenced by community experience during the 2019/2020 Black Summer bushfires
- Stakeholders also continuously highlighted the need for robust bushfire risk mitigation and emergency response planning. This was raised particularly when considering the Project's proximity to fire-prone areas, national parks, and natural bushland
- Impacts on local environment and landscape through toxic leakage from the battery system seeking nearby waterways and the broader natural environment
- Accommodation and housing impacts, with concerns the Project's construction workforce could exacerbate existing housing challenges and/or displace seasonal and lower-income workers
- Impacts on visual amenity was noted by survey respondents
- Impacts on property values were also noted by survey respondents
- Clarity on Project purpose and operations were sought by several community members, particularly in relation to its interaction with Snowy Hydro's infrastructure and load-sharing through the NEM.

When considering the CBS, stakeholders suggested the following:

- Local pre-school and/or primary school
- Initiatives with Khancoban United Volunteer Association (KUVA)
- Updated sporting facilities such as a squash court and/or gym
- Initiatives towards local food resilience
- Initiatives related to emergency preparedness, particularly in the face of natural disasters (such as bushfires).

As mentioned above, feedback and engagement activities to date indicate early engagement was appreciated, and the community and wider LGA is eager to benefit from the development of the Project through job opportunities, local economic injection through the use of ancillary services (noting this is to be balanced to ensure it does not negatively impact the local community), and the creation of a CBS.

Implementation of a clear CBS, paired with mitigating risks early and robust ongoing engagement efforts will be critical in ensuring the stakeholders within the Khancoban region are well-informed moving through the EIS phase and the wider SSD timeline.

4.2. Overall sentiment

In summary, this analysis has demonstrated that the sentiment towards the Project is majority neutral, with consideration of possible negative impacts of the Project on items such as bushfire and fire safety and preparedness, environmental considerations, accommodation, and impacts (such as visual amenity) on nearby neighbours.

Sentiment towards renewable energy developments in Khancoban is unique as the community has a long-standing connection to Snowy Hydro, a legacy project that has shaped local identity and economy, creating both strong familiarity with large-scale infrastructure and heightened sensitivity to potential cumulative impacts on the environment, housing, and community cohesion. Resultantly, the community has a higher level of understanding of the NEM more broadly as a result.

The analysis of sentiment can guide future community engagement efforts for the Project. For example, if specific concerns are frequently reflected in negative sentiments (such as concerns towards bushfire and fire), these areas could be prioritised for further discussions or investigation.

5. Future engagement recommendations

5.1. EIS engagement

As indicated, NGH recommends that the Applicant:

- Review this report thoroughly to assess the concerns identified and determine the necessary mitigation strategies
- Engage with DPHI to further explore the expected requirements for stakeholder engagement, impact analysis, mitigation measures, and CBS planning during the EIS stage
- Document and report all interactions and decisions made during the engagement process to provide transparency and a clear record for future stages of the Project
- Leverage local knowledge and expertise from affected stakeholders, including residents and First Nations groups, to inform the design and execution of the Project, particularly in relation to environmental impacts and CBS
- Communicate decisions on mitigations with all relevant parties, including non-associated receivers within 2km, SVC, elected MPs, First Nations groups, and the broader Khancoban community
- Maintain ongoing dialogue with non-associated receivers throughout the SSD development application process, ensuring they are involved in specialist assessments and kept informed about the outcomes
- Strengthen relationships with the local First Nations community by continuing engagement, understanding their perspectives, and addressing their concerns in Project planning and implementation
- Engage with stakeholders continuously, ensuring their feedback is actively considered and integrated into aspects of the Project, including visual impacts, site and road access, and community benefits
- Commit to transparency by regularly updating stakeholders and sharing relevant information throughout the entire planning and development process
- Proactively cultivate positive relationships with neighbours, residents, and local community members to foster a collaborative environment
- Implement and track mitigation measures, explore a CBS program, engage in ongoing discussions regarding a potential VPA with SVC, and execute a detailed communications and engagement plan for the EIS phase that ensures broad and inclusive community participation.

5.2. Ongoing strategic communications and robust engagement

It will be essential for the Applicant to ensure strategic and robust communication with non-associated receivers, and the wider Khancoban community is applied to ensure the community is well informed on the Project and its updates, and how they may impact the local community, particularly in relation to fire and bushfire impacts and future accommodation strategies.

It is recommended that strong communication and engagement efforts continue, and where the opportunity arises for face-to-face meetings to talk through the Project further, the Applicant should proceed if possible. It would also be beneficial to consider partnering with a broad range of stakeholders and community groups to provide advocates in the community who would be confident to speak to the merits of the Project, as well as

explore opportunities for collaboration around the Project. Recommendations and suggestions of such stakeholders include stakeholders who have had previous experience working on energy infrastructure Projects, the local RFS, the local Landcare Group, as well as other influential members of the community.

The collaborative development of a CBS would provide further opportunities for partnerships, particularly in the form of infrastructure upgrades or the further development of community services. It would be beneficial to continue to explore opportunities for groups that may benefit or may appreciate the opportunity to be part of the process.

It is also recommended that the Applicant continues engaging and forging relationships with First Nations groups in the Khancoban region. Such relationships are vital to the inclusion of First Nations groups in the renewable energy industry and ensures a strong connection to Country is protected and maintained.

5.3. Monitoring and evaluation

The effectiveness of community engagement efforts will be regularly assessed, reviewed, and refined to ensure comprehensive understanding of the Project and to improve participation where possible. This ongoing evaluation will align with the objectives outlined in the CSES.

The Applicant will capture community feedback through a Stakeholder Relationship Management (SRM) platform during the issuance of SEARS and throughout the EIS phase. This process will enable the collection of valuable insights regarding the community's experiences and perceptions of the engagement process, allowing the Applicant to identify areas for improvement and refine strategies accordingly.

The engagement approach will remain adaptable, with updates made as necessary to the CSES throughout the Project's lifecycle. Key updates will occur at the beginning and end of each Project phase. Based on feedback analysis and monitoring outcomes, the Applicant will adjust engagement strategies as needed. This may involve modifying meeting formats, expanding communication channels, or addressing specific community priorities that emerge during engagement.

6. Conclusion

In conclusion, this analysis has demonstrated that the sentiment towards the Project is majority neutral (with consideration for a number of concerns raised). Based on the feedback and engagement activity to date, the main opportunities and challenges have been identified:

Table 6-1 Opportunities and challenges

Opportunities	Challenges
<ul style="list-style-type: none"> • Community benefit sharing • Local economic participation through opportunities for local employment • Economic injection through the use of ancillary services • Ongoing engagement. 	<ul style="list-style-type: none"> • Fire safety • Emergency response planning • Impacts on local environment and landscape • Accommodation and housing impacts • Visual amenity • Impacts on property values (for nearby neighbours) • Clarity on Project purpose and operations

During this analysis, non-associated sensitive receivers, SVC, Federal and State representatives, Snowy Hydro, local emergency services (RFS, SES, etc.), local First Nations groups, and the broader Khancoban community were identified as key stakeholders as the Project transitions into the EIS phase. These groups have varying interests and concerns, ranging from fire safety and environmental protection to housing pressures, visual impacts, and the long-term benefits the Project may deliver to the region.

The Applicant is encouraged to continue proactive consultation with these stakeholders to build on existing relationships and foster long-term community partnerships. Implementing a CBS program, paired with robust and transparent engagement processes, will be critical to maintaining trust and addressing emerging risks early.

Feedback and engagement activities to date indicate that early engagement was appreciated and has created a foundation for constructive dialogue. Moving forward, it is recommended that the Applicant:

- Maintain consistent, two-way engagement with non-associated sensitive receivers and the wider community to provide updates on potential impacts, mitigations, and benefits
- Proactively share assessment outcomes, ensuring stakeholders have early visibility of key findings and decisions
- Use a mix of written communication and face-to-face engagement at accessible locations to ensure information is easily available and questions are addressed directly.

As the Project progresses through the EIS phase, it will be essential for the Applicant to deliver a strong engagement and communications strategy that focuses on shared benefits, meaningful community and stakeholder partnerships, and proactive management of concerns. A transparent approach, combined with visible local benefits and clear risk management, will help to build community confidence and support for the Project's delivery.

Appendix A Community letter



20 June 2025

Dear Khancoban Resident, Let's talk about a new opportunity for energy in the region.

Akaysha Energy is excited to share early plans for a new renewable energy project near Khancoban — the Murray Terminal Battery Energy Storage System (BESS).

This large-scale battery is proposed to be built near the existing Murray Terminal and Snowy Hydro infrastructure, approximately 1.8km from the edge of town (or about 3km by road). The facility would store renewable energy from the grid and nearby generation projects — including Snowy Hydro — and release it when demand is high. This helps improve the reliability, affordability, and sustainability of electricity for all of NSW.

We're still at the beginning.

We're currently undertaking environmental, cultural, and technical studies and starting early conversations with Traditional Owners, local landholders, emergency services, and the Khancoban community.

You're invited to a local drop-in session

We'd love to meet you, hear your thoughts, and answer any questions you may have about the project.

Alpine Inn, Khancoban
Saturday 12 July 2025
12:00pm – 4:00pm (drop in anytime)

Whether you're curious about how batteries work, want to understand the proposed site location, or simply wish to meet the team – we'd love to chat.

Help shape the Murray Terminal Battery

At Akaysha Energy, we don't just build in communities — we build *with* them. That's why your input now can help influence how this project takes shape.

What does early input help us do?

- ✓ Understand what matters most to you
- ✓ Avoid or reduce local impacts
- ✓ Design a smarter, more responsible project
- ✓ Create lasting local benefits

Akaysha Head Office,
Level 7, 22 Gordon Street
Cremorne VIC 3121



We're committed to meaningful engagement

Here's what you can expect from us:

- **Clarity** – Every engagement has a clear purpose.
- **Respect** – Your views will be heard and considered.
- **Transparency** – Your feedback will inform decisions.
- **Responsiveness** – We'll respond to concerns in a timely way.

What kind of input helps?

Local knowledge is invaluable. You might have insights on:

- Cultural and heritage values
- Local flora and fauna
- Traffic, access or infrastructure
- Community benefit ideas
- Local businesses or contractors
- Who we should be partnering with

Questions to consider:

- How could this project affect me or my community?
- Are there concerns you'd like to raise early?
- Are there opportunities we should explore together?

Stay in the loop and have your say

Visit: community.akayshaenergy.com/murray-terminal-bess

If you can't make the session but would like a callback or printed info mailed to you, just reach out — we're here to listen and respond.

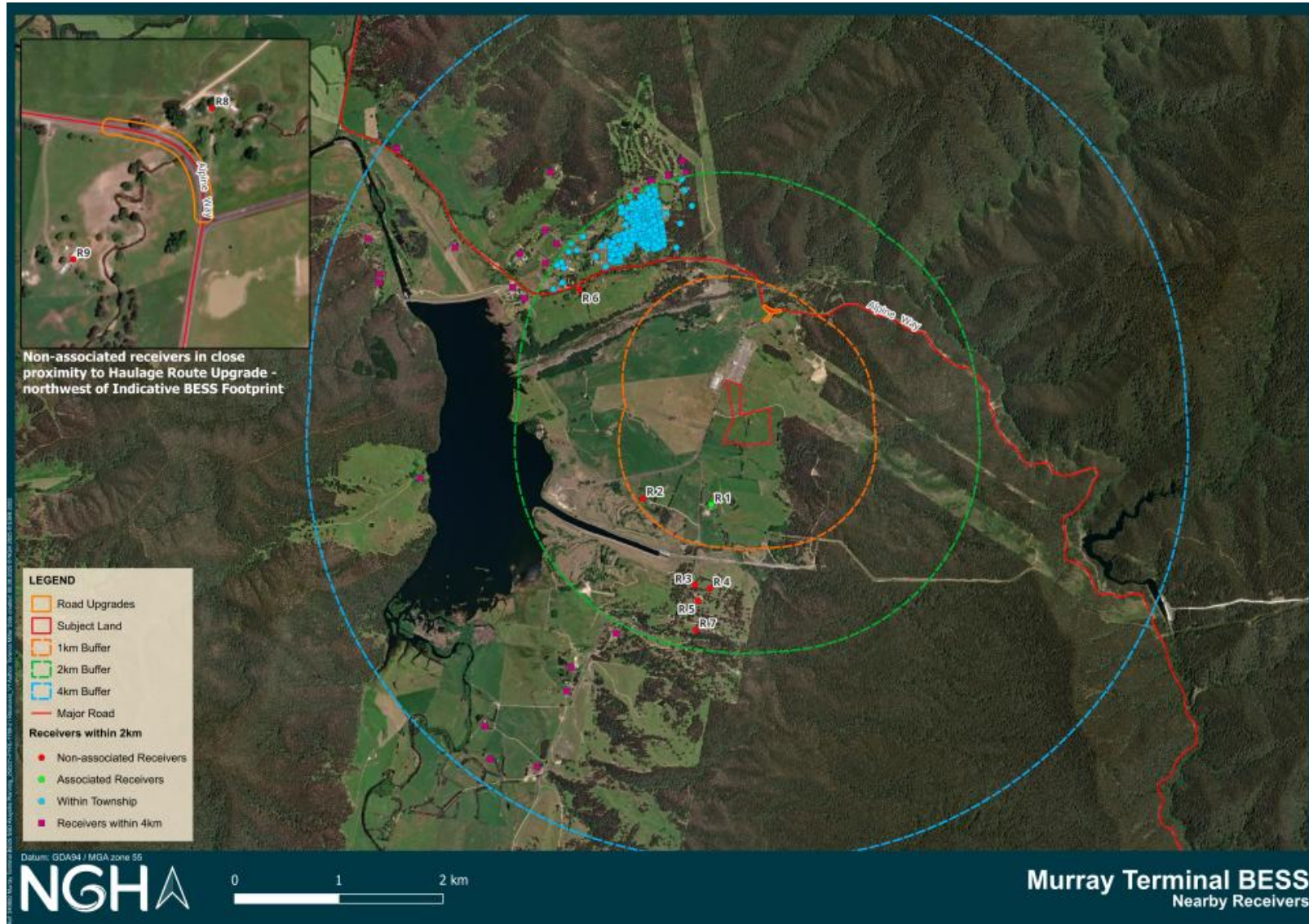
Warm regards,

Akaysha Energy

community@akayshaenergy.com



Appendix B Non-associated receivers



Appendix C Drop-in community information session



Appendix D Project Fact Sheet

Murray Terminal Battery Energy Storage System (BESS)

! Important

Akaysha Energy is committed to the delivery, development and deployment of large-scale batteries and renewables around the world.

We are proposing to develop a large-scale Battery Energy Storage System (BESS) at Khancoban, New South Wales.

This critical piece of energy infrastructure will help secure the energy supply in New South Wales and Victoria, by providing storage of excess energy generated during off peak hours for use during high demand periods.

What is a Battery Energy Storage System?

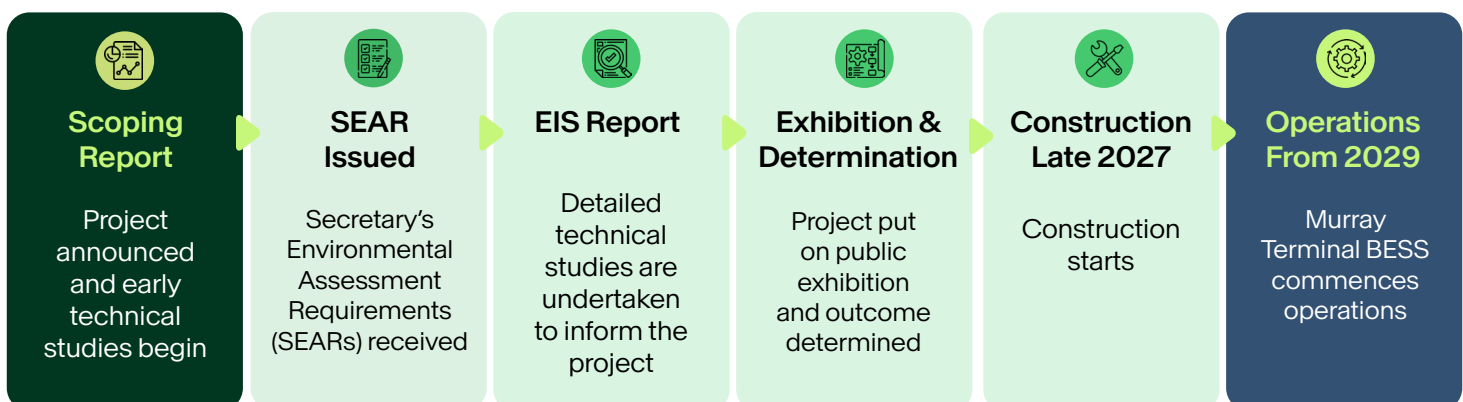
The Murray Terminal BESS will function as a robust, rechargeable battery for the power grid. It will capture excess energy from various sources from the grid, including hydro, solar, and wind to store for later use. This stored energy can be rapidly released back into the grid during periods of high demand or when renewable generation is low, helping to balance supply and demand and ensure a reliable flow of electricity.

Where will the BESS be located, and what is its capacity?

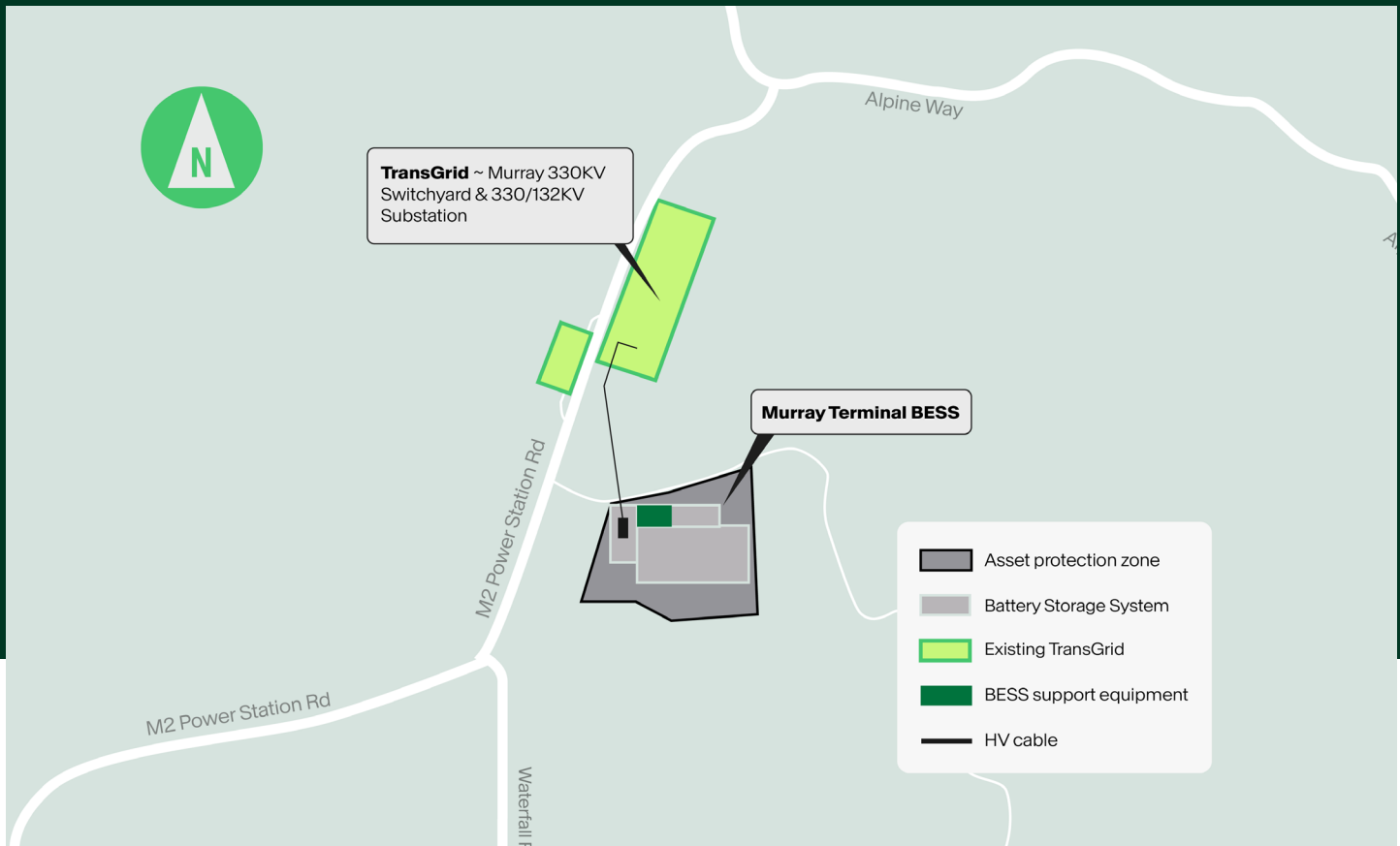
The BESS is proposed to be built directly south of the Murray Terminal 330kV Switching Station. The BESS investigation site is approximately 10 hectares (ha) of private land. The BESS is being designed for a capacity of 500MW/2000MWh providing up to 4 hours of energy storage, delivered using world-class leading battery technology.

What is the proposed timeline for the project?*

As a state-significant development, the project will be reviewed by the NSW Department of Planning Housing and Infrastructure (DPHI). The Murray Terminal BESS is in the very beginning stages of the development application phase, called the Scoping Report.



*Time frames are indicative only



The project will include:

- Installation of battery units, inverters, cooling systems, and other equipment.
- Connection to the national electrical grid.

The BESS will support the national energy network and a transition to clean energy.

What is the land currently used for, and why was it selected?

The Murray Terminal BESS is being proposed to be built on private land located to nearby existing electrical infrastructure. We selected this site following extensive studies conducted across several locations. It has been chosen for:

- Grid location
- Proximity to substation
- Renewable support

Project Benefits

- Storing up to 500MW/2000MWh of energy and providing up to 4 hours of energy storage.
- Creation of approximately 100 - 150 jobs throughout construction and operations, supporting the need for more local employment and stimulus in the economy.
- Increased energy reliability by supplying stored energy at times of low renewable energy generation.
- Funding for local community benefit programs.

Frequently Asked Questions



Snowy Hydro

Developing BESS infrastructure will not impact Snowy Hydro operations, as battery storage complements pumped hydro by providing fast-response grid stability, supporting energy reliability, and enabling better integration of renewable generation across the energy grid.



Fire

BESS facilities are designed with strict safety standards and include a range of fire prevention and protection measures to help reduce risk and keep the community safe.



Waterway and soil contamination

BESS' are designed to prevent chemical leaks and protect surrounding land and water. Environment assessments are carried out as part of the EIS process to ensure the design meets strict standards and won't negatively impact soil or waterways.



Traffic

The busiest traffic periods associated with a BESS will occur during the construction phase. A Traffic Management Plan (TMP) will be developed in collaboration with relevant road authorities to ensure appropriate management of traffic.



Electromagnetic Frequency (EMF)

EMF are a natural part of our environment and occurs in the earth's atmosphere. BESS' generate EMF levels that are typically lower than those produced by common household appliances. At the edge of a BESS site, these EMFs are not distinguishable from background environment levels.



Noise

BESS' do generate some noise, created by the cooling systems, inverters and transformers. Detailed Noise Impact Assessments (NIA) will be carried out in the EIS to make sure the development won't negatively disrupt the surrounding community.

What does a BESS look like and what are the visual impacts?

BESS facilities typically consist of containerised, modular systems that can be tailored to meet specific site and capacity needs.

The project is strategically located adjacent to existing electrical infrastructure, near the Murray Terminal Switching Station and transmission lines, to minimise visual impact.

Additionally, we will integrate vegetative screening (not shown in below images), blending the facility with existing vegetation and adding extra screening as needed.

Artists Impression

The artist's impression provides a visualisation of how the BESS could look. The image is indicative only and is subject to change based on further engineering, planning studies, and feedback from communities and stakeholders.



Artist's impression of the proposed Murray Terminal BESS



Artist's impression of the proposed Murray Terminal BESS

Planning Pathway

The project is in the beginning stages of the NSW state significant development pathway, called a Scoping Report.

Technical assessments for the development application are just commencing, and will continue over the next 6-12 months.

There will be plenty of more opportunities to engage with the project team prior to the development application being submitted to the NSW Department of Planning, Housing and Infrastructure for determination.

Please contact us for more information.

Want more information?

To find out more about the proposed Battery Energy Storage System (BESS) in the Khancoban area, come and speak to the Akaysha Energy team at our upcoming community drop-in session.



Community drop-in session

Saturday 12 July 2025
12 pm - 4 pm

Location: Alpine Inn, 1399
Alpine Way, Khancoban NSW,
2642

Contact us

We're committed to keeping you informed as we progress. Register to stay up-to-date or contact our project team for more information on our website.

Email address: community@akayshaenergy.com
Phone: 1300 530 923



Scan here and visit our website and complete the feedback survey.



Appendix E Project FAQ Document

FAQ

Overview of BESS.

Today's most
tomorrow company.

Contents

An overview of Battery Energy Storage Systems 04

- 1.1 What is a Battery Energy Storage System (BESS)? 04
- 1.2 Why are Battery Energy Storage Systems essential for the future of energy? 04
- 1.3 What are the components of a battery, and how do they store electrical energy? 04
- 1.4 How does a BESS work? What are the key components and processes involved in its operation? 05
- 1.5 How does a BESS interact with the energy grid? How does it store and distribute energy, and what are the key benefits of this technology? 06

Battery Disposal 07

- 2.1 What materials are used in Akaysha's batteries, and how do they ensure safety and environmental responsibility? 07
- 2.2 What is the expected lifespan of Akaysha's batteries, and how does this contribute to long-term sustainability? 07
- 2.3 What is the current state of battery recycling and disposal on a larger scale? 07
- 2.4 What are the specific challenges associated with battery disposal? 07
- 2.5 What advancements in battery recycling and disposal technologies are on the horizon, and how is Akaysha preparing for the future? 08
- 2.6 What steps is Akaysha taking to ensure responsible battery management if certain recycling technologies are not readily available? 09

Fire Risks and Fire Safety of BESS 10

- 3.1 How do the materials and design of Akaysha's BESS contribute to their safety and performance? 10
- 3.2 What factors can contribute to battery incidents, and how does Akaysha proactively address these concerns? 10
- 3.3 What is a thermal event? 11
- 3.4 How rare is a thermal event occurrence in a BESS? 11

3.5	What processes and infrastructure are in place to respond to any potential incident involving a BESS?	11
3.6	How does Akaysha ensure that its BESS systems are designed to contain and manage any potential incident while safeguarding the surrounding environment?	11
3.7	How are BESS protected from external fires?	12

Our Investors 13

4.1	What drives Akaysha’s vision and commitment to a sustainable energy future?	13
4.2	How does Akaysha cultivate a unique company culture that fosters innovation and collaboration?	13
4.3	What benefits does Akaysha’s partnership with BlackRock bring?	14
4.4	How does Akaysha’s ownership structure contribute to its ability to deliver value to communities?	14
4.5	In addition to BlackRock, does Akaysha have other investors or partners that support its mission?	14
4.6	How does Akaysha ensure that its mission and values remain at the forefront of its operations?	15
4.7	How does Akaysha balance its growth and financial success with its commitment to environmental responsibility and social impact?	15

Noise and Visual Impact 16

5.1	Why are BESS built in certain areas, and how close are they to where people live?	16
5.2	What causes noise from the batteries and other equipment?	16
5.3	How far does the noise travel, and what affects it?	17
5.4	How do you reduce noise from your BESS?	18

Glossary 19

Index 21



An overview of Battery Energy Storage Systems

1.1 What is a Battery Energy Storage System (BESS)?

A BESS is like a large, rechargeable battery for the power grid. It captures excess energy from various sources from the grid, such as solar panels or wind turbines, and stores it for later use. This stored energy can be released back into the grid during periods of high demand or when renewable generation is low, helping to balance supply and demand and ensure a reliable flow of electricity.

BESS technology is particularly valuable when paired with renewable energy sources, which can be intermittent depending on weather conditions. By storing excess energy generated during sunny or windy periods, a BESS helps to smooth out fluctuations in the power supply and ensure a consistent flow of clean energy, even when the sun isn't shining, or the wind isn't blowing.

A BESS acts as a buffer for the grid, storing energy when it's abundant and releasing it when it's needed, contributing to a more resilient and sustainable energy system.

1.2 Why are Battery Energy Storage Systems essential for the future of energy?

BESS are vital for the future of energy as they enable a more reliable, efficient, and sustainable power grid. They seamlessly integrate renewable energy sources like solar and wind, storing excess power and releasing it during peak demand or low generation periods. BESS also enhance grid stability by responding rapidly to fluctuations, preventing blackouts, and providing backup power during outages. Additionally, they reduce the need for costly and polluting plants, leading to a cleaner energy system and potential cost savings for consumers.

1.3 What are the components of a battery, and how do they store electrical energy?

A battery is like a tiny energy warehouse, built with three main parts. A positive electrode that is eager to lose tiny particles called electrons, a negative electrode that is eager to receive them and an electrolyte that sits between them, allowing the electrons to move between.

When the battery is charging, it's like filling up that warehouse. Electricity pushes the electrons from the positive side to the negative side, storing energy within the chemical structure of the electrodes. When the battery discharges, the electrons flow back from the negative to the positive side, creating an electrical current. This flow of electricity can power devices or be sent back to the power grid.

In a Battery Energy Storage System, the process is amplified, involving multiple batteries working together. The system includes additional components like a power converter, which acts as a translator between the battery's electricity and what's needed for the grid or your home. A management system monitors and controls the battery's performance ensuring safety and efficiency.

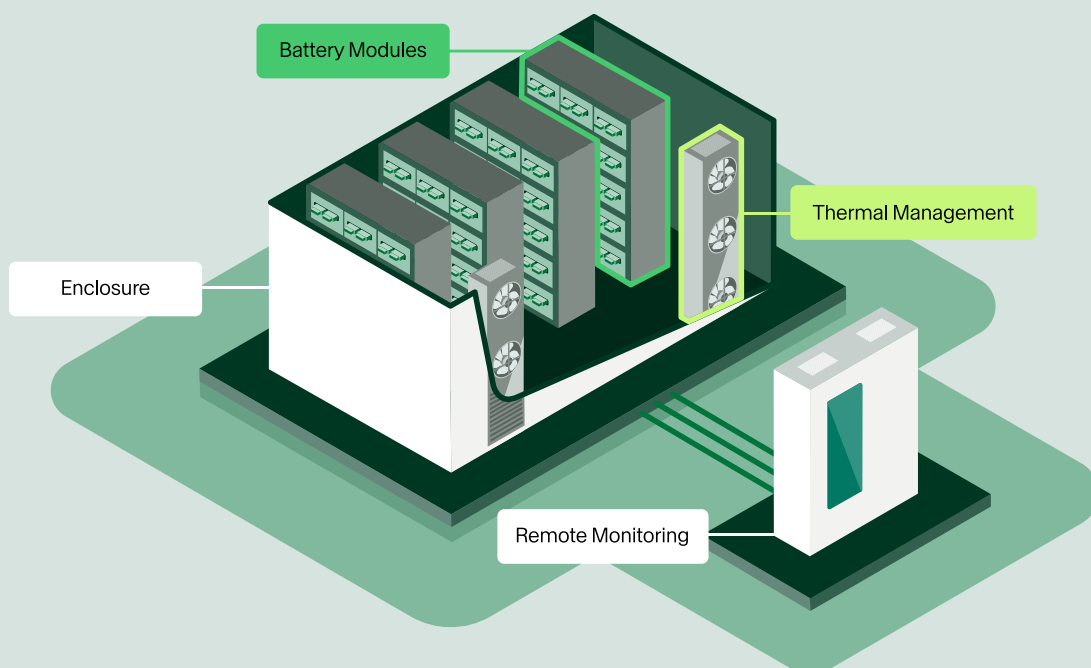
1.4 How does a BESS work? What are the key components and processes involved in its operation?

A BESS functions as a sophisticated energy reservoir, effectively managing the flow of electricity to and from the grid. At its core are the battery modules, which house individual battery cells that convert chemical energy into electrical energy. These cells are linked together in series and parallel to achieve the desired capacity.

These battery modules are housed within a secure, climate-controlled enclosure. To ensure optimal performance and longevity, the BESS incorporates sophisticated thermal management systems to maintain ideal operating temperatures for the batteries. This often involves advanced cooling and ventilation techniques to prevent overheating, especially during periods of high energy throughput. Regular maintenance, including inspections and testing, is conducted to ensure the batteries and associated components are operating safely and efficiently.

The BESS is primarily controlled and monitored remotely by a dedicated team of experts using advanced software platforms. They analyse real-time data, making adjustments to optimise performance and respond to changing grid conditions. In addition to this remote oversight, there will always be personnel on-site in close proximity to the BESS, ready to manage the system directly in the event of an emergency. This combination of centralised control and local presence ensures both efficient management and reliable integration with the power grid while providing rapid response capabilities if needed.

BESS Components.



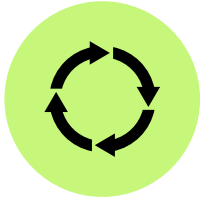
*Indicative Illustration only and not to scale.

1.5 How does a BESS interact with the energy grid? How does it store and distribute energy, and what are the key benefits of this technology?

A BESS plays a vital role in modern power grids by acting as a large-scale rechargeable battery. It interacts with the grid by charging when electricity supply exceeds demand, often from renewable sources like solar or wind power. This stored energy is then discharged back into the grid during peak demand periods or when renewable generation is low.

BESS technology offers several key benefits to the energy grid. It enhances grid reliability by balancing supply and demand, reducing the risk of blackouts, and puts downward pressure on consumer/ household electricity prices. Moreover, BESS enables better integration of renewable energy sources, which often generate power intermittently. By storing excess renewable energy, BESS ensures a steady and reliable power supply even when the sun isn't shining, or the wind isn't blowing.

Additionally, BESS contributes to the stabilisation of the reference price of electricity. It allows electricity to be stored when it's cheaper, typically during off-peak hours, and released during peak demand periods when electricity prices are higher.



Battery Disposal

2.1 What materials are used in Akaysha's batteries, and how do they ensure safety and environmental responsibility?

Our batteries use Lithium Iron Phosphate (LFP) chemistry, more stable than other lithium battery chemistries. LFP batteries are less prone to overheating and fire risks due to their stable chemical structure.

Our suppliers prioritise sustainability by sourcing materials responsibly and partnering with third-party companies to recycle batteries at the end of their life. This recycling process significantly reduces environmental impact, with a 74% reduction in CO2 emissions, 92% reduction in sulfur oxide and Nitrogen oxide emissions, and 97% less water usage compared to extracting new materials.*

*This information was received in July 2024 and is the opinion of Struber Consulting not Akaysha Energy. No such person creating the fact or figure is affiliated with Akaysha Energy or is an investor in an Akaysha-sponsored vehicle.

2.2 What is the expected lifespan of Akaysha's batteries, and how does this contribute to long-term sustainability?

Akaysha uses batteries designed to last at least 20 years, aligning with the lifespan of solar and wind systems, thereby minimising waste and the need for frequent replacements. This commitment to maximising battery lifespan while ensuring reliability and safety contributes significantly to the long-term sustainability of BESS. These batteries operate at high efficiency, requiring less auxiliary power and generating less heat and noise, further reducing their environmental impact. Once a battery's capacity degrades, it is retired, ensuring optimal performance and safety. This approach not only promotes sustainability but also maximises the value and efficiency of our battery energy storage systems.

2.3 What is the current state of battery recycling and disposal on a larger scale?

Battery recycling and disposal is evolving to meet the growing demand for batteries in our daily lives.

More and more facilities worldwide are gearing up to recycle different kinds of batteries, especially the lithium-ion ones found in our phones, electric cars, and battery energy storage systems. These facilities use cutting-edge technology to efficiently recover valuable materials from old batteries. Currently, this involves a three-step process.

See overleaf for an example of this process.



1. Shredding

Batteries are safely broken down into smaller pieces.



2. Materials Recovery

Different parts are separated, including plastics, minerals, and a special material called "black mass." Plastics are recycled, and valuable metals like copper are extracted. The "black mass," containing essential elements like lithium is processed further.



3. Chemical Processing and Material Recovery

Special techniques are used to dissolve and purify valuable metals from the shredded battery material. These purified metals are then sold back to battery manufacturers to make new batteries for various applications.

These steps ensure that materials are recycled and contribute to producing new battery components. This closed-loop system helps minimise waste and supports creating new, high-quality batteries, enabling a sustainable future.

2.4 What are the specific challenges associated with battery recycling?

Recycling Lithium Iron Phosphate (LFP) batteries, while presenting unique challenges due to developing infrastructure and specialised processes, remains a viable and increasingly important aspect of the battery lifecycle. The economic landscape is evolving as the demand for these batteries grows, driving innovation in recycling technologies and infrastructure.

While LFP batteries may not contain the same high-value metals as other chemistries, the economic benefits of recycling extend beyond simple material recovery. Recycling conserves valuable resources, reduces the environmental impact of raw material extraction, and minimises disposal costs. Advancements in recycling processes are continually improving efficiency and cost-effectiveness, making the recovery and repurposing of critical materials from LFP batteries increasingly feasible.

We are committed to being at the forefront of this evolution, actively investing in and partnering with organisations that are developing cutting-edge recycling solutions. Our goal is to ensure a sustainable and responsible end-of-life path for our batteries, contributing to a circular economy where valuable materials are recovered and reused, minimising environmental impact, and maximising resource utilisation.

2.5 What advancements in battery recycling and disposal technologies are on the horizon, and how is Akaysha preparing for the future?

While the current capacity for battery recycling isn't yet where it needs to be, there's good news on the horizon. Significant efforts are underway to improve battery recycling processes, and the Lithium Iron Phosphate batteries used in our BESS are highly recyclable.

Continued...

As part of our commitment to minimising our environmental impact, we're actively collaborating with organisations and research bodies at the forefront of battery recycling technology. Our goal is to ensure that when our batteries reach the end of their lifespan, they're recycled responsibly, contributing to a circular economy, and reducing the demand for new raw materials.

We believe that the future of energy storage is not only about performance and reliability, but also about sustainability. By staying at the forefront of battery recycling innovation, we're ensuring that Akaysha remains a leader in responsible BESS solutions.

2.6 What steps is Akaysha taking to ensure responsible battery management if certain recycling technologies are not readily available?

We're committed to responsible battery management at every stage. Even if certain recycling technologies aren't readily available now, we prioritise the safe storage of depleted batteries in secure environments that meet strict safety standards. We're seeking to collaborate with organisations specialising in battery management and disposal and exploring innovative solutions beyond traditional recycling. Our commitment extends beyond recycling, encompassing a complete battery lifecycle approach that ensures our batteries are handled safely and responsibly from sourcing to end-of-life.



Fire Risks and Fire Safety of BESS

3.1 How do the materials and design of Akaysha's BESS contribute to their safety and performance?

Our BESS are designed with safety and performance as top priorities. Our battery units adhere to rigorous fire safety and electrical standards, including UL Solutions certification - UL9540A and Australian Standards AC IEC 62619. The batteries also undergo comprehensive testing to prevent thermal runaway fire propagation. Constant monitoring further minimises risks and ensure the safe operation of our BESS.

We maintain a robust quality management process to ensure our products are free from manufacturing defects. Fire assessments, conducted by expert consultants, guide the design of our project locations, layouts, and emergency vehicle access to optimize safety. These consultants provide detailed reports that inform our safety measures. To prevent thermal runaway, we implement stringent thermal management protocols through advanced battery management systems. In rural areas, we incorporate asset protection zones and setbacks to minimize bushfire risks, further enhancing safety in line with the consultants' recommendations.

We also collaborate with local fire authorities to develop comprehensive fire management plans that enhance safety measures even further. This multi-faceted approach ensures that Akaysha's BESSs deliver reliable performance while prioritising the safety of the surrounding environment and communities.

3.2 What factors can contribute to battery incidents, and how does Akaysha proactively address these concerns?

Put simply, anything that stores energy (like a car's petrol tank) can present a risk, even batteries. While battery storage technology has an excellent safety record, we acknowledge that certain factors, including thermal runaway, manufacturing defects, and external events, can pose potential risks.

To address these risks, we only utilise battery units that have been rigorously tested to the highest industry standards for thermal runaway fire propagation. Additionally, strict thermal management protocols, including advanced control and cooling systems, are in place to prevent overheating and maintain optimal operating temperatures. We also employ comprehensive quality management processes to minimise the risk of manufacturing defects, ensuring the reliability and longevity of our battery components.

The location and layout of our BESS sites are also carefully chosen to mitigate the risk of bushfires. We incorporate asset protection zones, setbacks, and other preventative measures into the design. Furthermore, we actively collaborate with the local emergency services to develop robust fire management plans that address potential hazards specific to the site and surrounding environment. Our BESSs are equipped with state-of-the-art fire detection systems and adhere to stringent fire safety and electrical standards. To further ensure the system's safety and reliability, we continuously monitor its operation and perform regular maintenance, allowing us to identify and address any potential issues.

3.3 What is a thermal event?

A thermal event in a BESS is when the batteries get too hot. This can happen for a few reasons, like if something causes external damage to the battery or if it's overcharged.

If batteries overheat, it can lead to a more serious issue called thermal runaway. This is when the heat causes a chain reaction, making things even hotter and potentially leading to a fire.

The good news is that thermal runaway is very rare. Modern BESSs have lots of safeguards to prevent this from happening. They have special systems to keep the batteries cool and alarms to warn if they get too hot. Akaysha's asset management team constantly monitor for these alarms and are ready to intervene to prevent thermal runaway. So, while it's important to be aware of this issue, it's also important to know that battery energy storage systems are designed with safety in mind. They have multiple layers of protection to make sure they operate safely and reliably.

3.4 How rare is a thermal event occurrence in a BESS?

Thermal events in BESS are exceedingly rare. Our systems are designed with multiple layers of safety features to prevent overheating and maintain safe operating temperatures. Think of it like a thermostat in your house that automatically adjusts to keep the temperature comfortable. BESSs have similar systems to regulate temperature and ensure that every cell is monitored 24/7 to ensure they stay within safe limits. Additionally, our systems are equipped with alarms that alert operators if any unusual conditions arise, allowing them to address potential issues.

3.5 What processes and infrastructure are in place to respond to any potential incident involving a BESS?

We take the safety of our BESS very seriously. We've designed our BESS with multiple layers of protection starting with advanced safety features built into the system itself that constantly monitor for and address any potential issues. To further minimise risks, we maintain safe distances around each BESS, allowing emergency responders easy access if needed. We also work closely with local fire authorities to create detailed fire management plans for each location, ensuring a quick and effective response in case of a thermal event.

In areas prone to bushfires, we take extra precautions and follow strict guidelines on where we install the BESS to prevent fires from spreading. These measures are specific to each location and consider factors such as location, nearby vegetation, bushfire alert levels and setbacks. We're committed to the ongoing safety of our BESSs and are collaborating with local authorities and emergency services to ensure the safety and wellbeing of our communities.

3.6 How does Akaysha ensure that its BESS systems are designed to contain and manage any potential incident while safeguarding the surrounding environment?

Akaysha is committed to enhancing fire safety measures within the community. To achieve this, we are establishing strategic partnerships with relevant Rural Fire Services and other firefighting organisations across different regions where our BESSs operate. These partnerships will focus on knowledge sharing and capacity building, with Akaysha sharing its expertise on fire risks, prevention strategies, and innovative mitigation measures.

Akaysha uses UL Solutions UL9540A tested and certified battery products on all our projects. The UL9540A test standard includes multiple layers of forced thermal runaway testing of battery cells, battery modules and battery enclosures to ensure no propagation of the thermal runaway. This is the highest global safety standard for BESSs.

3.7 How is a BESS protected from external fires?

BESS are designed with robust fire safety measures to mitigate external fire risks. These measures include ample setbacks and spacing between BESS units and potential fire risks to create buffer zones to prevent fire spread. BESS housing structures are also constructed using fire-resistant materials, further enhancing their resilience against external fires.



Our Investors

4.1 What drives Akaysha's vision and commitment to a sustainable energy future?

We are always building a better tomorrow for the people and the planet. We are an action-based clean energy business, scaling fast, rapidly deploying BESS in Australia, first, then through global expansion, next.

Our vision and commitment to a sustainable energy future is driven by a deep understanding of energy markets, a passion for innovation, and a dedication to responsible project development. We believe that by leveraging our diverse expertise in energy markets, finance, engineering, project development, and technical optimisation, we can create lasting, positive change in the energy sector.

Our team brings together a wealth of experience in developing and deploying large-scale batteries and renewables projects worldwide. We understand the intricacies of energy markets and utilise our in-house dispatch optimisation software and forecasting tools to develop the highest quality and most investible projects.

We are committed to working closely with suppliers, investors, and others to deliver complex energy projects that benefit all stakeholders. We are also mindful of our footprint in the communities where we operate and engage with local stakeholders to ensure mutually beneficial and lasting legacies.

4.2 How does Akaysha cultivate a unique company culture that fosters innovation and collaboration?

Our distinct culture, centred on innovation and collaboration, is deeply rooted in four core values. We value safety, a data-based inquisitive risk measuring approach, team delivery, and authentic communication to create environments where our people are encouraged to think critically, share ideas openly, and challenge assumptions.

We like to think we have a 'scrappy' mindset, where agility and adaptability are celebrated, enabling our people to respond quickly to new challenges and opportunities. This, combined with a commitment to continuous learning and improvement, empowers Akaysha to push boundaries, explore new ideas, and ultimately drive innovation.

By nurturing a collaborative atmosphere where diverse perspectives are valued and individual contributions are recognised, we cultivate a culture that not only fuels collaboration but also ensures the successful execution of our projects.

4.3 What benefits does Akaysha's association with BlackRock bring to the company's growth and impact?

Akaysha's partnership with BlackRock brings significant financial strength and stability, accelerating our growth and expanding our project portfolio. BlackRock's global reach and expertise open new markets and opportunities, while their shared commitment to sustainability ensures our projects are developed responsibly. This partnership enhances our credibility, fosters innovation, and accelerates the adoption of industry-leading BESS technology.

4.4 How does Akaysha's investor structure contribute to its ability to deliver value to customers and communities?

Akaysha's investors trust Akaysha and believe in our commitment to delivering value to the communities in which we operate. We prioritise proactive engagement with local stakeholders, recognising the importance of establishing positive, long-term relationships based on mutual respect and benefit.

Our Community Benefit Sharing initiative is a testament to this commitment. We believe in sharing the rewards of our renewable energy developments with host communities, and we do this through a process that is transparent, tailored, collaborative, and aligned with local needs and aspirations. This approach allows us to not only deliver clean energy solutions but also contribute to the economic, social, and environmental well-being of the communities we serve.

By involving local communities in our planning processes and investing in projects that align with their strategic goals, we ensure that our presence creates lasting, positive legacies. This approach fosters trust, strengthens our relationships with local stakeholders, and ultimately enhances our ability to deliver value to both customers and communities.

4.5 In addition to BlackRock, does Akaysha have other investors or partners that support its mission?

At Akaysha Energy, we're fortunate to have the support of diverse investors who share our vision. BlackRock's investment has been pivotal in accelerating our growth and enabling us to develop innovative battery solutions like the Waratah Super Battery. We proudly chose to partner with the Clean Energy Finance Corporation (CEFC), reflecting our shared commitment to driving innovation and sustainability in the renewable energy sector.

We've also secured financial backing from leading international and domestic banks for our expanding portfolio of projects, demonstrating the global reach and appeal of our technology. We're grateful for the trust and support of our investors as we work together to build a cleaner energy future.

4.6 How does Akaysha ensure that its mission and values remain at the forefront of its operations?

At Akaysha, we live and breathe our mission and values. Our action-based approach is evident in our rapid deployment of Battery Energy Storage Systems (BESS), showcasing our commitment to tangible results and a fast-paced working environment. We are deeply involved in the entire lifecycle of our BESS projects, from development and deployment to ongoing operation and maintenance. Akaysha's unwavering commitment to seeing these projects through underscores our dedication to scaling battery energy storage solutions, starting in Australia and expanding globally as part of our commitment to a sustainable future.

Our core values aren't just words, they're embedded in our daily operations. We prioritise safety, make data-driven decisions, foster teamwork, communicate authentically, and embrace an agile mindset. We regularly review and reinforce these values, ensuring they guide our behaviour, decisions, and culture. This is how we ensure our mission, and values remain at the forefront of everything we do at Akaysha.

4.7 How does Akaysha balance its growth and financial success with its commitment to environmental responsibility and social impact?

At Akaysha, we believe that our growth and financial success are intrinsically linked to our commitment to environmental responsibility and social impact. As a company backed by BlackRock, we adhere to strict EU regulations, including a strong commitment to ESG principles. We don't see these as competing priorities, but rather as complementary aspects of our business.

Our core business of deploying Battery Energy Storage Systems (BESS) directly contributes to environmental sustainability by enabling the transition to renewable energy sources and reducing carbon emissions. This not only benefits the planet but also positions us for long-term financial success in a world increasingly focused on clean energy solutions. Furthermore, our commitment to social impact is woven into our company culture and values. We strive to create a positive impact in the communities where we operate, through ethical business practices, local partnerships, and initiatives that support sustainable development.

We constantly evaluate our operations to minimise our environmental footprint and maximise our positive social impact. This includes responsible sourcing, waste reduction, and supporting community projects. We believe this holistic approach not only strengthens our business but also contributes to a more sustainable and equitable future for all.



Noise and Visual Impact

5.1 Why are BESSs built in certain areas, and how close are they to where people live?

BESS are often built near major power transmission infrastructure or near areas with high energy demand, like cities or near energy sources. This is because they're most efficient when they're close to where electricity is being used or generated. This way, BESSs can help keep the power grid stable and more efficient, especially during peak usage times.

As for how close they are to where people live, it can vary by country. BESSs are often located in industrial areas or near existing power transmission infrastructure where there is poor grid stability. In all cases, safety is always a top priority, and these systems are designed and operated with strict regulations in place to protect the surrounding community. There are also ongoing efforts to make BESSs even quieter and more compatible with urban environments.

5.2 What causes noise from the batteries and other equipment?

While Battery Energy Storage Systems (BESS) are generally quiet compared to other power sources, they do produce some noise. Think of it like an air conditioner unit for your house - you barely notice it's running, but if you stand right next to it, you'll hear the whirring of the fan and the hum of the motor.

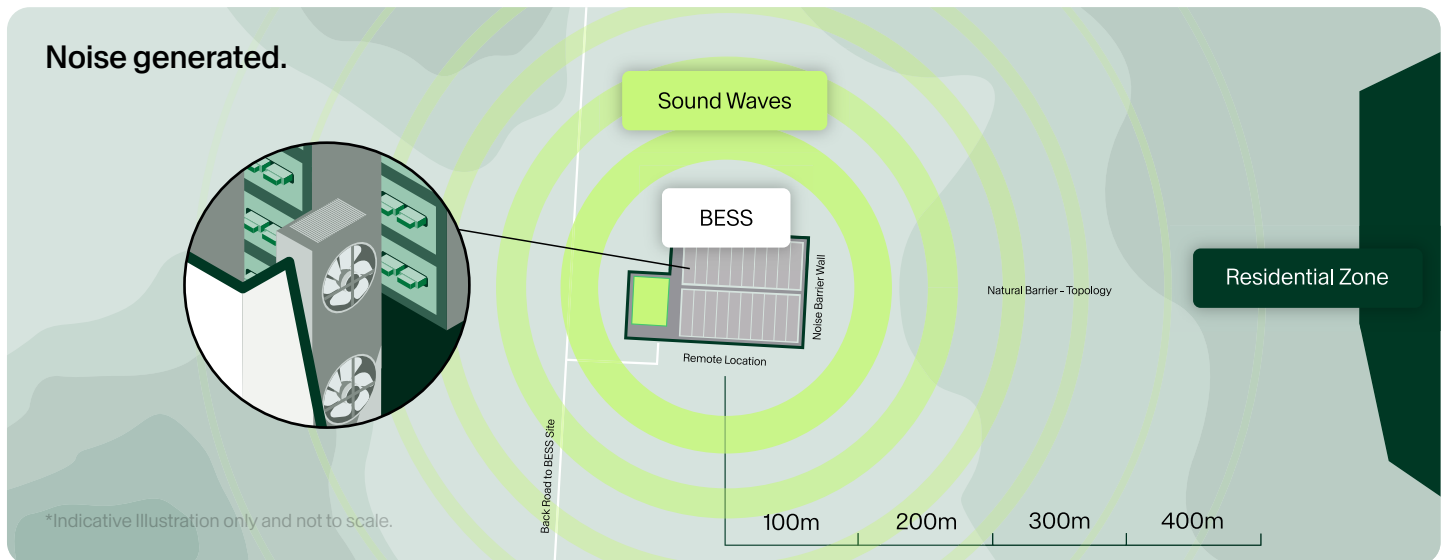
Similarly, BESS make noise primarily from their cooling systems when they're charging or discharging. Just like batteries in your laptop or phone can get warm with use, the large-scale batteries in a BESS generate heat, especially when charging or discharging energy quickly. To prevent overheating and ensure the system's longevity and safety, fans are used to cool the batteries and other components. These fans are the main source of noise you might hear from a BESS.

Besides the fans, other equipment within the BESS, such as inverters (which convert energy between different forms) and transformers (which adjust voltage levels), can also contribute to the overall noise level. While these components generally emit a low hum, they are still a factor to consider when assessing the noise impact of a BESS.

5.3 How far does the noise travel, and what affects it?

The noise generated from a Battery Energy Storage System (BESS) can vary depending on several factors, such as the system's design, the weather, topography of surrounding land, time of day, and the level of background noise. In most cases, the sound generated by a BESS can travel a few hundred meters.

While noise is a consideration, it can be effectively managed with proper planning and technology, such as using quieter cooling equipment, carefully selecting locations for BESS installations or building sound barriers. These measures are typically able to ensure BESS operational noise remains below the local noise regulations for the closest neighbouring properties.



5.4 How do you reduce noise from your BESS?

We're committed to being good neighbours, and that means keeping noise to a minimum. While Battery Energy Storage Systems (BESS) are generally quiet, the cooling systems that keep the batteries and equipment at the right temperature can generate some noise.

We tackle this in several ways. We use larger fans that can run at slower, quieter speeds while still effectively keeping everything cool. We also implement smart technology that adjusts fan speed based on the cooling demand, ensuring they aren't always running at full power. Additionally, we carefully design the layout of our BESS sites, utilizing natural barriers such as hills and trees, or constructing sound barriers to minimize noise in the surrounding area. If additional noise reduction measures are needed, we can also install noise walls to further mitigate any impact on the community.

We're always looking for ways to improve, and quieter technology is constantly being developed. Our goal is to make sure our BESS fit seamlessly into the community, with minimal impact on our neighbours.

Glossary

Term	Definition
Asset Protection Zones	Areas surrounding a BESS with reduced vegetation and other flammable materials to minimise the risk of fire spread.
Battery Energy Storage System (BESS)	A large-scale rechargeable battery for the power grid that captures excess energy and stores it for later use. It helps balance supply and demand, ensuring a reliable flow of electricity.
Battery Modules	The core of a BESS, housing individual battery cells that convert chemical energy into electrical energy. These cells are linked together to achieve the desired capacity.
Bushfire Alert Levels (BAL)	A system used in Australia to rate the risk of bushfire exposure for a given area. Higher BAL ratings indicate a greater risk.
Circular Economy	An economic model focused on reducing waste and reusing resources. In the context of batteries, it involves recycling and repurposing materials to minimise environmental impact.
Community Benefit Sharing	Akaysha initiative to share the economic benefits of its projects with host communities, ensuring mutual gain and sustainable development.
Dispatch Optimisation Software	Software used to analyse grid conditions, predict energy demand, and control the charging and discharging of BESS to maximise efficiency and profitability.
End-of-Life Threshold Capacity	Refers to the reduced charging capacity a battery reaches after a certain number of charge cycles or years of operation. When a battery's capacity falls below this threshold, it's considered to be at the end of its useful life.
IEC 62619	An international safety standard for BESS, addressing various aspects like electrical safety, performance, and environmental considerations.
Inverter	A device that converts direct current (DC) electricity, as stored in batteries, to alternating current (AC) electricity, which is used by most appliances and the power grid.
Lithium Iron Phosphate (LFP) battery	A type of lithium-ion battery using lithium iron phosphate (LiFePO ₄) as the cathode material, and a graphitic carbon electrode with a metallic backing as the anode.

Term	Definition
Reference Price of Electricity	The price of electricity at a specific location and time, used as a benchmark for trading and settlement in electricity markets. BESS can influence this price by storing energy when it's cheap and releasing it when demand drives prices up.
Thermal Management Systems	Systems within a BESS that maintain ideal operating temperatures for the batteries, preventing overheating and ensuring optimal performance.
Thermal Runaway	A rare but serious event in a BESS where excessive heat causes a chain reaction, potentially leading to a fire. Modern BESS have safeguards to prevent this.
Setbacks	Minimum required distances between a BESS installation and other structures, such as property lines, buildings, or flammable materials. Setbacks are crucial for fire safety and are often determined by council/governmental regulations and site-specific risk assessments.
Transformer	An electrical device that adjusts voltage levels. In a BESS, transformers are used to connect the battery system to the grid and to step up or down voltage as needed.
UL9540A	A rigorous fire safety standard for BESS that involves testing battery cells, modules, and enclosures to ensure they prevent thermal runaway and fire propagation.

Index

A

Akaysha information

- Culture · 4, 14, 15, 16
- Ownership structure · 15
- Partnership with BlackRock · 4, 15
- Social impact · 4, 16
- Vision and commitment on sustainability · 4, 14

Asset protection zones · 11, 19

B

Battery disposal · 3, 8

- Challenges · 2, 9
- Current state · 3, 8
- Future advancements · 3, 9
- Lifespan of batteries · 8
- Materials used in batteries · 3, 8
- Recycling and disposal technologies · 3, 8
- Responsible battery management · 3, 10

Battery Energy Storage Systems (BESS) · 3, 5, 11, 17, 19

- Components · 3, 5
- Definition · 5
- How it works · 6
- Importance for the future of energy · 5
- Interaction with energy grid · 7
- Key benefits · 7
- Location and proximity to residential areas · 11, 12
- Noise and visual impact · 17
- Operation · 6, 16

Battery incidents · 3, 11

- Causes · 11
- Thermal event · 3, 12
- Thermal runaway · 11, 12, 13, 20

Battery modules · 6, 19

Blackrock · 4, 15, 16

Bushfire alert levels (bal) · 12, 19

C

Clean Energy Finance Corporation · 15

Community benefit sharing · 15, 19

D

Dispatch optimisation software · 19

E

Environmental responsibility · 3, 8, 15, 19

F

Fire risks and safety · 3, 11

- Contributing factors · 11
- Prevention · 13
- Protection from surrounding environment · 13
- Protection of surrounding environment · 16
- Safety and performance · 11

Thermal runaway · 12

Fire safety standards

IEC 62619 · 11, 19

UI9540A · 11, 13, 20

I

Inverter · 17

L

Lithium iron phosphate batteries · 8, 9, 19

N

Noise and visual impact

Causes of noise · 4, 17

Distance noise travels · 4, 17

Factors affecting noise · 17

Noise and visual impacts

Noise reduction methods · 4, 18

R

Recycling and disposal technologies · 8

Reference price of electricity · 7

S

Setbacks · 11, 12, 13, 20

Sustainability · 3, 8, 9, 15, 16

T

Thermal events · 12

Definition · 12

Frequency · 12

Prevention · 13

Thermal runaway · 11

Definition · 12

Frequency · 12

Prevention · 12

Transformer · 16

Today's most
tomorrow company.

DISCLAIMER:

This information is a general description of BESS and Akaysha Energy only. The views expressed in this website represent those of the Akaysha Energy team and are subject to change. No information set out above constitutes advice, an advertisement, an invitation, a confirmation, an offer or a solicitation, to buy or sell any security or other financial product or to engage in any investment activity, or an offer of any banking or financial service. Some products mentioned on this website may not be suitable for you and may not be available in all jurisdictions. Before acting on any information, you should consider the appropriateness of it having regard to your particular objectives, financial situation and needs and seek advice.

Contact

community@akayshaenergy.com

Akaysha Head Office
Level 7, 22 Gordon Street
Cremorne VIC 3121

Appendix F Online Survey

Murray Terminal BESS

Share your thoughts on the Murray Terminal Battery Energy Storage System (BESS) proposal

Community Survey

Thank you for sharing your thoughts on the Murray Terminal Battery Energy Storage System (BESS) proposal. This survey will help to inform the Preliminary Social Impact Assessment (SIA) that is being undertaken as part of the Scoping Report for the proposal. The survey has 17 questions and will take between 5-10 minutes to complete.

The survey has a particular focus on social impacts and benefit sharing opportunities. Your response will help us gain a clear picture of key community values, perceptions about the proposal, likely social impacts and opportunities, and thoughts about community benefits.

Please note that information provided through this survey will be stored securely and will be used only to inform the proposal's Scoping Report and the associated engagement activities. Where you provide your contact details, these will only be used to engage with you regarding this proposal. Your responses will not be linked to your name and your name will not be recorded anywhere within the SIA report. If you have any queries on this survey or on the proposal in general, contact the Project Engagement Team at X.

Survey closes 4:00 PM, X X X 2025.

Murray Terminal BESS

About you

* Where best describes where you live?

- Less than 1km from the proposed project site
- Between 1-2km from the proposed project
- Between 2-4km from the proposed project
- More than 4km from the proposed project
- I don't live here but I own land/property
- I don't live here but visit the area for recreation
- I don't live here but visit the area for work
- Other (please specify)

* In what way are you involved in the community? Choose all that apply.

- I live here
- I attend school or work locally
- I am a member of a local club or community organisation
- I am involved in tourism
- I am a near neighbour to the proposed development
- I own a business
- I work for an agency/organisation that is focused on this area
- I am not involved in the community
- Other (please specify)

Murray Terminal BESS

Your local area

What do you value most about the local area? Choose all that apply

- Cultural heritage
- Community/family ties
- Historic values
- Landscape and views
- Natural values
- Recreation opportunities including sporting, fishing, nature based, etc.
- Work opportunities
- Other (please specify)

What views or landscape characteristics in the region and local area are important to you?

Murray Terminal BESS

Attitudes towards Battery Energy Storage Systems (BESS)

* What do you like about large-scale renewable energy developments, generally? For example, solar or wind farms. Choose all that apply.

- Reduction of greenhouse gas emissions & help to combat climate change
- Renewable energy generation
- Local economic opportunities - jobs, tourism, economic stimulus
- Diversification of land use/income streams
- Community benefits, including funds for community projects
- None of the above
- Other (please specify)

What concerns do you have about potential impacts of large-scale renewable energy developments, generally? For example, solar or wind farms. Choose all that apply.

- Community impacts
- Visual impacts
- Noise, during construction or operation
- Traffic, during construction or operation
- Effects on land use
- Effects on land values
- Effects on natural areas or habitats
- No concerns
- Other (please specify)

Murray Terminal BESS

Knowledge of and attitude towards BESS

* How would you rate your knowledge of utility-scale battery energy storage systems (BESS)?

- No knowledge
- A little knowledge
- Some knowledge
- Moderate knowledge
- Expert knowledge

How would you rate your attitude towards the Murray Terminal BESS?

- Strongly oppose
- Oppose
- Somewhat oppose
- Neutral
- Somewhat support
- Support
- Strongly support
- Undecided

Can you please give us a reason for your attitude towards the Murray Terminal BESS?

What are the main reasons you're interested in the Murray Terminal BESS? Choose all that apply.

- I would like to seek potential work with the project
- The proximity to my residence and the impacts this may cause
- The potential negative impacts on the local area
- I want to build my understanding of the project
- Other (please specify)

Murray Terminal BESS

Important factors

In terms of this proposal, what are the most important environmental factors to you? Choose all that apply.

- Native vegetation impacts
- Potential for impacts to waterways
- Fire management practices
- Waste management procedures
- Helping to reduce carbon emissions/action on climate change
- Other (please specify)

In terms of this proposal, what are the most important social and economic factors to you?
Choose all that apply.

- Securing employment
- Potential business from the project
- Potential impacts to property values
- Cultural heritage
- Engagement with near neighbours
- Disruption to community cohesion
- Community benefit opportunities from the project
- Proving proactive action against climate change
- Supporting grid stability and energy supply
- Other (please specify)

In terms of this proposal, what are the most important amenity factors to you? Choose all that apply.

- Potential for visual impacts for near neighbours
- Potential for noise impacts for near neighbours
- Transportation planning and the use of local roads
- Temporary construction impacts (i.e., noise, traffic, dust)
- Other (please specify)

In terms of the potential for Akaysha Energy to invest in community initiatives, what do you think they could invest in on an annual basis and how could this be managed locally?

Murray Terminal BESS

Future contact and final thoughts

How would you like the Project Team to engage with you going forward?

- Follow up phone call
- I would like a meeting at my residence
- I would like to subscribe to email updates
- I would like a regular newsletter in the post
- I will visit the website if I need extra information
- No further contact necessary
- Other (please specify)

Contact details

Name

**Organisation name
(if applicable)**

Address

Postcode

Email Address

Phone Number

Is there anything else that you would like to tell us or feel that is important to say?

NGH

NSW • ACT • QLD • VIC

ABN 31 124 444 622 ACN 124 444 622

E: ngh@nghconsulting.com.au

GOLD COAST

2B 34 Tallebudgera Creek Road
Burleigh Heads QLD 4220

T. (07) 3129 7633

SYDNEY REGION

Suite 9.01, Level 9, 28 Foveaux Street
Surry Hills NSW 2010

T. (02) 8202 8333

BEGA

Suite 11, 89-91 Auckland Street
(PO Box 470)
Bega NSW 2550

T. (02) 6492 8333

MELBOURNE

Level 14, 10-16 Queen Street
Melbourne VIC 3000

T. (03) 7031 9123

TOWNSVILLE

Level 4, 67-75 Denham Street
Townsville QLD 4810

T. (07) 4410 9000

BRISBANE

T3, Level 7, 348 Edward Street
Brisbane QLD 4000

T. (07) 3129 7633

**NEWCASTLE - HUNTER &
NORTH COAST**

2 Dick Street
Newcastle West NSW 2302

T. (02) 4929 2301

**WAGGA WAGGA - RIVERINA &
WESTERN NSW**

35 Kincaid Street (PO Box 5464)
Wagga Wagga NSW 2650

T. (02) 6971 9696

CANBERRA

Unit 8, 27 Yallourn Street
(PO Box 62)
Fyshwick ACT 2609

T. (02) 6280 5053

SUNSHINE COAST

Building 1, 30 Chancellor Village Boulevard
Sippy Downs QLD 4556

T: 13 54 93

WODONGA

Unit 2, 83 Hume Street
(PO Box 506)
Wodonga VIC 3690

T. (02) 6067 2533