



286-310 Gregory St, South West Rocks
Residential Development

OPERATIONAL WASTE MANAGEMENT PLAN

11/03/2025
Report No. 6192
Revision C

Client

South West Rocks Living Pty Ltd

Architect

King & Campbell

<https://www.kingcampbell.com.au/>

REVISION REFERENCE

Revision	Date	Prepared by	Reviewed by	Description
A	20/02/2025	M. Bechara	J. Parker	Draft
B	24/02/2025	M. Bechara	J. Parker	Final
C	11/03/2025	J. Parker	E. Saidi	Amendment

The information contained in this document produced by Elephants Foot Consulting (EFC) is solely for the use of the client identified on the cover sheet for the purpose for which it has been prepared for. EFC undertakes no duty, nor accepts any responsibility for any third party who may rely upon this document. Reproduction, publication or distribution of this document without written permission from EFC is strictly prohibited.

TABLE OF CONTENTS

1.0	ACKNOWLEDGEMENT OF COUNTRY	2
2.0	INTRODUCTION.....	2
2.1	SCOPE OF REPORT	2
2.2	REPORT CONDITIONS	3
3.0	LEGISLATION & GUIDANCE.....	4
4.0	DEVELOPMENT OVERVIEW.....	5
4.1	SITE LOCATION.....	5
5.0	RESIDENTIAL WASTE MANAGEMENT	6
5.1	RESIDENTIAL WASTE GENERATION ESTIMATES.....	6
5.2	RESIDENTIAL BIN SUMMARY	7
5.3	RESIDENTIAL WASTE DISPOSAL PROCEDURES.....	7
5.4	RESIDENTIAL BIN COLLECTION PROCEDURES	7
5.5	OTHER RESIDENTIAL WASTE MANAGEMENT CONSIDERATIONS	7
5.5.1	RESIDENTIAL COMMON AREAS.....	7
5.5.2	LANDSCAPED AREAS AND GARDEN ORGANICS.....	8
5.5.3	RESIDENTIAL BULKY WASTE PROCEDURES.....	8
6.0	STAKEHOLDER ROLES & RESPONSIBILITIES	9
7.0	SOURCE SEPERATION	10
8.0	EDUCATION	11
8.1	SIGNAGE.....	11
9.0	POLLUTION PREVENTION.....	11
10.0	BIN MOVING PATHS.....	12
11.0	BIN AREAS.....	13
12.0	CONSTRUCTION REQUIRMENTS.....	15
12.1	ADDITIONAL CONSIDERATIONS.....	15
13.0	USEFUL CONTACTS.....	16
APPENDIX A:	ARCHITECTURAL PLANS.....	17
APPENDIX: A.1	GROUND FLOOR PLAN.....	18
APPENDIX B:	PRIMARY WASTE MANAGEMENT PROVISIONS.....	19
APPENDIX: B.1	TYPICAL BIN SPECIFICATIONS	20
APPENDIX: B.2	SIGNAGE FOR WASTE AND RECYCLING BINS	21
APPENDIX: B.3	EXAMPLE COLLECTION VEHICLE INFORMATION.....	23
APPENDIX C:	SECONDARY WASTE MANAGEMENT PROVISIONS.....	25
APPENDIX: C.1	EXAMPLE SOURCE SEPARATION RECEPTACLES	26

TABLE OF FIGURES

Figure 1:	Site Location.....	5
-----------	--------------------	---

LIST OF TABLES

Table 1: Estimated General Waste and Recycling Volumes - Residential	6
Table 2: Stakeholder Roles and Responsibilities	9
Table 3: Operational Waste Streams.....	10
Table 4: Bin Areas.....	13
Table 5: Bin Area Requirements	14

GLOSSARY OF ABBREVIATIONS AND TERMS

TERM	DESCRIPTION
<i>Bulky Waste</i>	Recycling items that are too large to be deposited into bins, including furniture, whitegoods, electronics and mattresses
<i>Collection Area/Point</i>	Designated area or point where bins are loaded onto the collection vehicle for servicing
<i>Communal Bin Area</i>	A central, shared bin area accessible to all residents or staff to dispose of their waste stream
<i>DA</i>	Development Application
<i>DCP</i>	Development Control Plan
<i>EPA</i>	Environment Protect Authority
<i>FOGO</i>	Food Organics and Garden Organics
<i>General Waste</i>	All non-recyclable and non-hazardous waste that is sent to landfill
<i>HRV</i>	Heavy Rigid Vehicle
<i>L</i>	Litre
<i>LEP</i>	Local Environmental Plan
<i>Mobile Bins</i>	Containers with a capacity up to and including 1100L designed to be collected by a rear-loading vehicle
<i>MRV</i>	Medium Rigid Vehicle
<i>Owners Corporation</i>	An organisation or group of persons that is identified by a particular name and that acts, or may act, as an entity
<i>Recycling</i>	Waste stream that combines all recycling, including comingled recycling, paper/cardboard and metals.
<i>Source Separation Receptacles</i>	Communal containers used throughout the development for the day-to-day disposal of different waste streams
<i>SRV</i>	Small Rigid Vehicle
<i>Waste Stream</i>	A classification used to describe waste of a particular type (eg. food waste stream)
<i>WHS</i>	Workplace Health and Safety

1.0 ACKNOWLEDGEMENT OF COUNTRY

Elephants Foot Consulting (EFC) acknowledges that every project we work on takes place on First Peoples land. We recognise Aboriginal and Torres Strait Islander People as Traditional Custodians of this land. We pay respect to ancestors and Elders, past and present.

2.0 INTRODUCTION

Elephants Foot Consulting (EFC) has been engaged to prepare the following Operational Waste Management Plan (OWMP) to satisfy the conditions of the Development Application Kempsey Shire Council requires for the residential development located at 286-310 Gregory St, South West Rocks NSW.

Robust waste management strategies are required for new developments to support the design and sustainable performance of the building. It is EFC's belief that a successful waste management strategy contains three key objectives:

- i. **Promote responsible source separation** to reduce the amount of waste that goes to landfill by implementing convenient and efficient waste management systems.
- ii. **Ensure adequate waste and recycling provisions and procedures** are established that will cater for potential changes during the operational phase of the development.
- iii. **Comply** with all relevant council codes, policies, and guidelines.

To achieve these objectives, this OWMP identifies and details the following components:

- Waste streams expected to be generated onsite and anticipated volumes;
- Suitable bin sizes and quantities;
- Waste and recycling disposal procedures;
- Bin area size estimations and equipment recommendations; and
- Waste collection strategies, locations and frequencies.

It is vital that this OWMP is integrated into the overall management of the building and is clearly communicated to all relevant stakeholders.

2.1 SCOPE OF REPORT

This OWMP only applies to the **operational** phase of the proposed development; therefore, the requirements outlined in this OWMP must be implemented during the operational phase of the site and may be subject to review upon further expansion of, and/or changes to the development.

The waste management of the **construction** and **demolition** phases of the development are not addressed in this report. A construction and demolition WMP will not be provided separately.

2.2 REPORT CONDITIONS

The purpose of this report is to document an OWMP as part of a development application, which is supplied by EFC with the following limitations:

- Drawings, estimates and information contained in this OWMP have been prepared by analysing the information, plans and documents supplied by the client and third parties including Council and other government agencies. The assumptions based on the information contained in the OWMP is outside the control of EFC,
- The figures presented in the report are an estimate only – the actual amount of waste generated will be dependent on the occupancy rate of the building/s and waste generation intensity as well as the operator’s approach to educating residents and tenants regarding waste management operations and responsibilities,
- The operator will adjust waste management operations as required based on actual waste volumes (e.g. if waste is greater than estimated) and increase the number of bins and collections accordingly,
- The report will not be used to determine or forecast operational costs or prepare any feasibility study or to document any safety or operational procedures,
- The report has been prepared with all due care; however no assurance is made that the OWMP reflects the actual outcome of the proposed waste facilities, services, and operations, and EFC will not be liable for plans or results that are not suitable for purpose due to incorrect or unsuitable information or otherwise,
- EFC offer no warranty or representation of accuracy or reliability of the OWMP unless specifically stated,
- Any manual handling equipment recommended in this OWMP should be provided at the recommendation of the appropriate equipment provider who will assess the correct equipment for supply,
- Design of waste management chute equipment and systems must be approved by the supplier,
- EFC cannot be held accountable for late changes to the design after the OWMP has been submitted to Council,
- EFC will provide specifications and recommendations on bin access and travel paths within the OWMP; however, it is the architect’s responsibility to ensure the architectural drawings meet these provisions,
- EFC are not required to provide information on collection vehicle swept paths, head heights, internal manoeuvring or loading requirements. It is assumed this information will be provided by a traffic consultant,
- Council are subject to changing waste and recycling policies and requirements at their own discretion.

3.0 LEGISLATION & GUIDANCE

Waste management and resource recovery regulation in Australia is administered by the Australian Constitution, Commonwealth laws, and international agreements. State and territory governments maintain primary responsibility for controlling development and regulating waste. The following legislation has been enacted in New South Wales and provides the lawful underpinnings of this OWMP.

- NSW Environmental Planning & Assessment Act 1979
- NSW Protection of the Environment Operations Act 1997
- NSW Waste Avoidance & Resource Recovery Act 2001

At the local level, councils or Local Government Areas (LGAs) require OWMPs to be included in new development applications. This OWMP is specifically required by:

- Kempsey Shire Development Control Plan 2013
- Kempsey Shire Local Environmental Plan 2013

The primary purpose of a Development Control Plan (DCP) is to guide the planning process according to the aims of the corresponding local environmental plan (LEP). The DCP must be read in conjunction with the provisions of the relevant LEP.

Information provided in this OWMP comes from a wide range of waste management guidance at the local, state, and federal levels. The primary sources of guidance include:

- Kempsey Shire Development Control Plan 2013 – Chapter B16 – Waste Minimisation and Prevention
- NSW Better Practice Guide For Resource Recovery In Residential Developments 2019
- NSW Better Practice Guidelines for Waste Management and Recycling in Commercial and Industrial Facilities 2012
- NSW Waste Avoidance and Resource Recovery (WARR) Strategy 2014-2021
- NSW Waste Classification Guidelines 2014
- Australia’s National Waste Policy 2018

4.0 DEVELOPMENT OVERVIEW

The proposed development falls under the LGA of Kempsey Shire Council and consists of a Land Lease community managed by Broadlands:

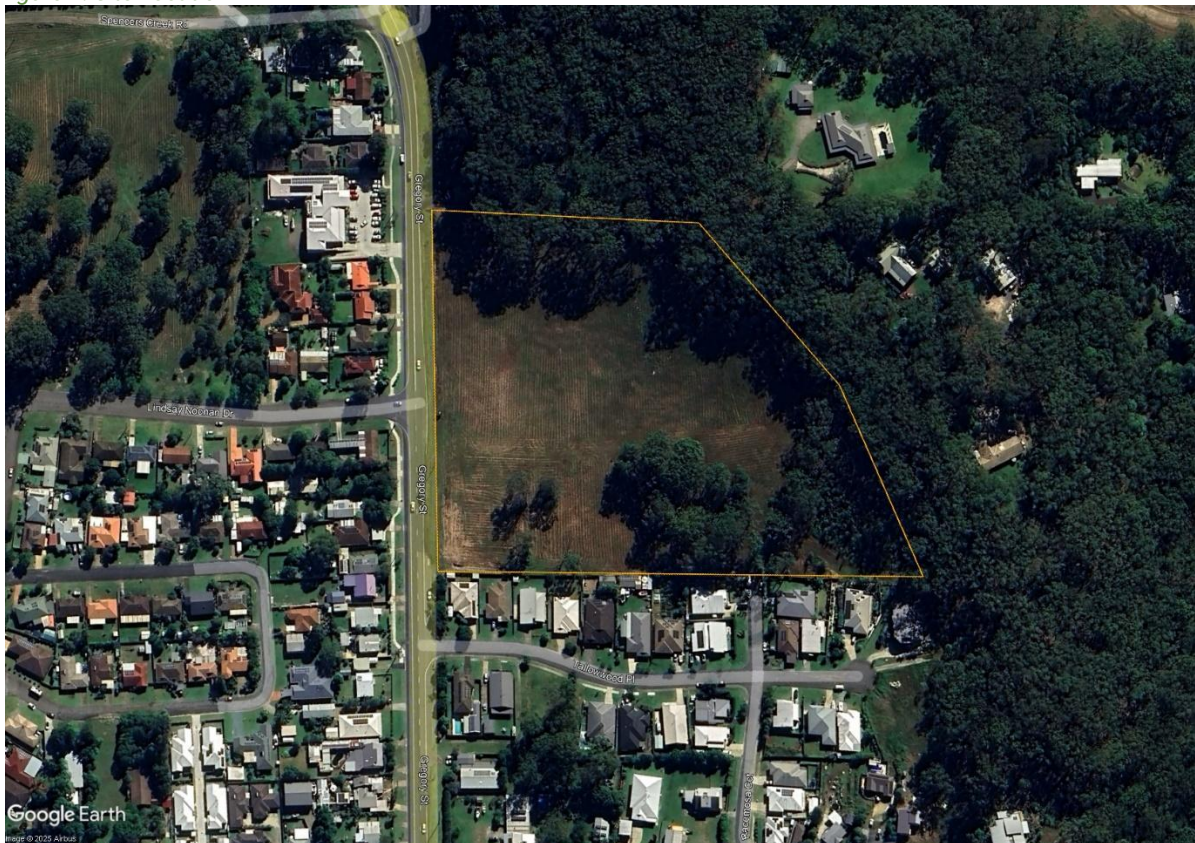
- A community for 50's demographic including:
 - 101 single dwellings
 - Clubhouse and an outdoor pool
 - Central park with large canopy trees and picnic areas
 - Park with pickleball court and picnic area

All figures and calculations are based on area schedules as advised by our client and shown on architectural drawings.

4.1 SITE LOCATION

The site (Lot 3 DP801467) is located at 286-310 Gregory St, South West Rocks NSW, as shown in Figure.1 (boundaries are indicative only). The site has frontages to Gregory Street and Racemosa Circuit with vehicle access via Gregory Street and pedestrian access via both.

Figure 1: Site Location



Source: Google Earth Pro 2025

5.0 RESIDENTIAL WASTE MANAGEMENT

The following section outlines best practice waste management for the residential component of the development, including waste stream generation estimates and disposal and collection procedures.

5.1 RESIDENTIAL WASTE GENERATION ESTIMATES

The Kempsey Shire Development Control Plan 2013, Chapter B16, Waste Minimisation and Prevention has been referenced to calculate the total number of bins required for the residential units. Calculations are based on generic general waste, recycling and Food Organics and Garden Organics (FOGO) rates. Actual volumes of general waste, recycling and FOGO generated in operation may differ according to the residents' actual waste management practices.

The following table shows the estimated volume (L) of general waste, recycling and FOGO generated by the residential component of the development.

Table 1: Estimated General Waste and Recycling Volumes - Residential

Bin Area	# Units	General Waste Generation Rate (L/unit/week)	Generated General Waste (L/week)	Recycling Generation Rate (L/unit/week)	Generated Recycling (L/week)	FOGO Waste Generation Rate (L/unit/week)	Generated FOGO Waste (L/week)
A	10	80	800	40	400	25	250
B	10	80	800	40	400	25	250
C	10	80	800	40	400	25	250
D	10	80	800	40	400	25	250
E	10	80	800	40	400	25	250
F	10	80	800	40	400	25	250
G	10	80	800	40	400	25	250
H	10	80	800	40	400	25	250
I	10	80	800	40	400	25	250
J	11	80	880	40	440	25	275
TOTAL	101		8080		4040		2525
Bins & Collections	General Waste Bin Size (L)		660	Recycling Bin Size (L)	660	FOGO Waste Bin Size (L)	240
	General Waste Collections per Week		2	Recycling Collections per Week	1	FOGO Waste Collections per Week	1
	Total General Waste Bins Required		10	Total Recycling Bins Required	10	Total FOGO Waste Bins Required	20
Bins per Building/ Core	Area	# Bins		Area	# Bins	Area	# Bins
	A	1		A	1	A	2
	B	1		B	1	B	2
	C	1		C	1	C	2
	D	1		D	1	D	2
	E	1		E	1	E	2
	F	1		F	1	F	2
	G	1		G	1	G	2
	H	1		H	1	H	2
	I	1		I	1	I	2
J	1		J	1	J	2	

Note: At the time of writing, Council do not have an active FOGO collection service. Provision for FOGO bins at this development have been included to account for a future FOGO collection service.

5.2 RESIDENTIAL BIN SUMMARY

Based on the estimated volumes of general waste, recycling and FOGO generated by the development, the recommended bin quantities and collection frequencies are as follows:

General Waste: 10 x 660L bins collected **2 x weekly**

Recycling: 10 x 660L bins collected **1 x weekly**

FOGO: 20 x 240L bins collected **1 x weekly**

During operation, it is the responsibility of the Land Lease Community operator to monitor the number of bins required for the residential component of the development. General waste, recycling and FOGO volumes may change according to residents' attitudes to waste disposal, building occupancy levels or the development's management. Any requirements for adjusting the capacity of the waste facilities may be achieved by changing the number of bins, the bin sizes or collection frequencies. Land Lease Community operator will be required to negotiate any changes to bins or collections with the collection service provider.

5.3 RESIDENTIAL WASTE DISPOSAL PROCEDURES

Each dwelling will be provided with a storage area capable of holding separate receptacles for general waste, recycling and FOGO. This is typically located within kitchen areas beneath the workbench. This space should be sized to accommodate 40L receptacles (minimum) to account for 2 days' worth of general waste and recycling and 20L for FOGO storage.

Communal bin areas are assumed for this development, a communal bin area is assumed for every 10 single dwellings. A minimum of 10 communal bin areas containing 660L bins for general waste and recycling and 240L bins for FOGO waste are suggested. The residents will be responsible for walking their waste and recycling to their allocated communal bin areas and placing their waste into the correct bin.

Refer to Council guidance for the types of materials accepted in the general waste and recycling streams.

5.4 RESIDENTIAL BIN COLLECTION PROCEDURES

It is assumed that a private waste contractor will service the general waste, recycling and FOGO waste bins on an agreed set schedule. This report assumes that general waste will be collected twice per week and recycling and FOGO once a week.

A private waste collection vehicle will enter the site from Gregory Street and drive around the development and collect the bins from each communal bin area. Upon completion, the private waste collection vehicle will exit the site from Gregory Street.

5.5 OTHER RESIDENTIAL WASTE MANAGEMENT CONSIDERATIONS

The following sections outline other waste management considerations for the residential components.

5.5.1 RESIDENTIAL COMMON AREAS

Residential common areas, described in Chapter 4 of this report, will be supplied with suitably branded source separation receptacles where considered appropriate. Receptacles should be placed in convenient locations which are accessible to all residents. The Land Lease

Community operator will monitor the capacity of these receptacles and empty the contents into the central collection bins as required.

5.5.2 LANDSCAPED AREAS AND GARDEN ORGANICS

Garden organics generated from surrounding landscaped areas and indoor foliage typically consists of lawn clippings, cuttings, leaves and branches.

Garden organics generated from surrounding landscaped areas will be managed and removed from the site by the designated landscaping contractors as they carry out scheduled landscaping maintenance works.

Garden organics generated from within residential units will be managed by the residents and should be disposed of into the FOGO bins.

5.5.3 RESIDENTIAL BULKY WASTE PROCEDURES

Residents will be responsible for managing their bulky waste and depositing them at the nearest waste transfer centre. See Council's website for information regarding the disposal of waste in the Kempsey Shire Council.

6.0 STAKEHOLDER ROLES & RESPONSIBILITIES

The following table outlines the primary roles and responsibilities of the respective stakeholders:

Table 2: Stakeholder Roles and Responsibilities

Roles	Responsibilities
Land Lease Community Operator	<ul style="list-style-type: none"> • Co-ordinate the waste strategy within the site, including engaging the waste collection contractor. • Ensure all waste service providers submit monthly reports on all equipment movements and waste quantities/weights. • Organise internal waste audits/visual assessments on a regular basis. • Purchase any on-going waste management equipment or maintenance of equipment once building is operational; and • Manage any non-compliances/complaints reported through waste audits.
Residents	<ul style="list-style-type: none"> • Dispose of all general waste and recycling in the allocated MGBs provided; • Ensure adequate separation of general waste and recycling; • Clean and transport bins as required; • Compliance with the provisions of Council and the OWMP; • Clean and transport bins as required; • Organising bulky goods collection when required; • Investigating and ensuring prompt clean-up of illegally dumped waste materials; • Preventing storm water pollution by taking necessary precautions (preventing overfilling of bins);
Waste Collection Contractor	<ul style="list-style-type: none"> • Provide a reliable and appropriate bin collection service. • Provide regarding contamination of recyclables feedback to operator/residents; and • Work with operator to customise waste systems where possible.
Gardening/Landscaping Contractor	<ul style="list-style-type: none"> • Remove all garden organics generated during gardening maintenance activities for recycling at an offsite location.
Developer	<ul style="list-style-type: none"> • Purchase all equipment required to implement this OWMP prior to the occupation of the building to be provided to the Strata or Body Corporate.

7.0 SOURCE SEPERATION

Better practice waste management includes the avoidance, reuse, and recovery of unwanted items, which can be achieved through source separation. The table below outlines what is typically included in various waste streams and how they can be managed. Refer to your local council for a list of accepted materials. Planet Ark can be accessed online to find other facilities that recover unwanted items.

Table 3: Operational Waste Streams

Waste Stream	Description	Typical Destination	Waste Stream Management
General Waste	The remaining portion of the waste stream that is not recovered for re-use, processing, or recycling. May include soft plastics, food scraps, polystyrene, etc.	Landfill	General waste should be bagged before placing in designated general waste bins.
Recycling	A mixture of items that are commonly recycled usually segregated through a MRF. Typically include food and beverage containers (e.g. aluminium, glass, steel, hard plastics, cartons). Also included cardboard and paper products.	Material Recovery Facility (MRF)	Recycling must not be bagged, and instead should be placed loosely in the designated recycling bins. Cardboard should be flattened before placing in the designated recycling bin.
FOGO	FOGO consists of unwanted or uneaten kitchen scraps that are easily compostable/biodegradable (e.g. vegetable peels, fruit rinds, coffee grounds) and garden organics including lawn clippings, leaves, pruning's and branches.	Composting Facility	FOGO should be bagged in compostable liners when deposited into the bins and will be collected.
Garden Organics	Garden organics consists of unwanted organic materials that are easily biodegradable and/or compostable (e.g. lawn clippings, branches)	Resource Recovery Centre	Landscape Maintenance Contractors will remove the garden organics from site during scheduled maintenance.
Electronic Waste	Discarded e-waste, electronic components and materials such as computers, mobile phones, keyboards, etc.	Resource Recovery Centre	Residents arrange collection for e-waste recycling as needed.
Bulky Waste Items	Items that are too large to place into general rubbish collection. This includes disused and/or broken furniture, mattresses, white goods, etc.	Resource Recovery Centre or Landfill	Residents arrange collection for bulky waste as needed.
Sanitary Waste	Feminine hygiene waste generated from female bathrooms.	Incineration or Landfill	Sanitary bins are serviced by sanitary waste contractor.
Other	Other recyclable items that require special recovery may include ink cartridges, batteries, chemical waste, fluorescent tubes, etc.	Resource Recovery Facility	Operator arranges collection by appropriate recycling services when required.

8.0 EDUCATION

Educational material encouraging correct separation of general waste, recycling and FOGO must be provided to each resident. This should include the correct disposal process for bulky waste such as old furniture, large discarded items, and other materials including electronic and chemical wastes. It is recommended that the building caretaker provide information in multiple languages to support correct behaviours, and to minimise the possibility of chute blockages and contamination in communal bins.

Education and communication must be provided consistently on a regular basis to encourage behaviour change and account for transient building personnel such as new residents, tenants, or cleaning staff. Information should include:

- Descriptions of items accepted in the general waste, recycling and FOGO streams (refer to Council guidance);
- How to dispose of bulky waste and any other items that are not general waste, recycling or FOGO (refer to Council guidance);
- Residents' obligations to health and safety as well as the Land Lease Community operator; and
- How to prevent cross contamination among waste streams.

8.1 SIGNAGE

Signage and education are essential components to support best practice waste management including resource recovery, source separation, and diversion of waste from landfill.

Signage should include:

- Clear and correctly labelled bins,
- Instructions for separating and disposing of waste items. Different languages should be considered,
- Locations of, and directions to, the waste storage areas with directional signs, arrows, or lines,
- The identification of all hazards or potential dangers associated with the waste facilities, and
- Emergency contact information should there be issues with the waste systems or services in the building.

All signage should conform to the relevant Australian Standards.

9.0 POLLUTION PREVENTION

Residents shall be responsible for the following to minimise dispersion of site litter and prevent stormwater pollution to avoid impact to the environment and local amenity:

- Promoting adequate waste disposal into the bins
- Securing all bin areas (whilst affording access to staff/contractors)
- Prevent overfilling of bins, keep all bin lids closed and bungs leak-free
- Taking action to prevent dumping or unauthorised use of waste areas
- Require collection contractor/s to clean up any spillage when clearing bins

10.0 BIN MOVING PATHS

Minimal movement of bins is anticipated for this site, as bins are to be collected directly from their storage location.

Any movement of bins should minimise manual handling where possible, as bins become heavy when full. The Land Lease Community operator must assess manual handling risks and provide any relevant documentation to key personal.

The routes along any bin moving paths should;

- Allow for a continuous route that is wholly within the property boundary.
- Be free from obstruction and obstacles such as steps and kerbs.
- Be constructed of solid materials with a non-slip surface
- Be A minimum of 300mm wider than the largest bin used onsite.
- If bins are moved manually, the route must not exceed a grade of 1:14.
- If a bin moving device is used, the route cannot exceed the maximum operating grade of the device. This is typically a grade of 1:4, however this will vary depending on the model of bin moving device acquired for the site.

11.0 BIN AREAS

The areas allocated for waste storage and collection areas are detailed in the table below and are estimates only.

Table 4: Bin Areas

Bin Area Type	Equipment	Estimated Area Required (m ²)
Communal Bin Area A	1x660L bins (<i>general waste</i>) 1x660L bins (<i>recycling</i>) 2x240L bins (<i>FOGO</i>)	6
Communal Bin Area B	1x660L bins (<i>general waste</i>) 1x660L bins (<i>recycling</i>) 2x240L bins (<i>FOGO</i>)	6
Communal Bin Area C	1x660L bins (<i>general waste</i>) 1x660L bins (<i>recycling</i>) 2x240L bins (<i>FOGO</i>)	6
Communal Bin Area D	1x660L bins (<i>general waste</i>) 1x660L bins (<i>recycling</i>) 2x240L bins (<i>FOGO</i>)	6
Communal Bin Area E	1x660L bins (<i>general waste</i>) 1x660L bins (<i>recycling</i>) 2x240L bins (<i>FOGO</i>)	6
Communal Bin Area F	1x660L bins (<i>general waste</i>) 1x660L bins (<i>recycling</i>) 2x240L bins (<i>FOGO</i>)	6
Communal Bin Area G	1x660L bins (<i>general waste</i>) 1x660L bins (<i>recycling</i>) 2x240L bins (<i>FOGO</i>)	6
Communal Bin Area H	1x660L bins (<i>general waste</i>) 1x660L bins (<i>recycling</i>) 2x240L bins (<i>FOGO</i>)	6
Communal Bin Area I	1x660L bins (<i>general waste</i>) 1x660L bins (<i>recycling</i>) 2x240L bins (<i>FOGO</i>)	6
Communal Bin Area J	1x660L bins (<i>general waste</i>) 1x660L bins (<i>recycling</i>) 2x240L bins (<i>FOGO</i>)	6

The bin areas have been calculated based on equipment requirements and/or bin dimensions with an additional 70% of bin GFA factored in for manoeuvrability.

In addition, all doorways and passageways facilitating the movement of bins and/or bulky waste items must be at least 1500mm wide.

The following table provides further waste area requirements.

Table 5: Bin Area Requirements

Bin Area Type	Bin Area Requirements
Communal Bin Area	<ul style="list-style-type: none">• Bins should be arranged so that all bins are accessible. Bins are not to be placed in front another or in such a way as to restrict access to the other bins for use.

12.0 CONSTRUCTION REQUIREMENTS

Waste area construction must comply with the minimum standards as outlined in the *Kempsey Shire Development Control Plan 2013*, in order to minimise odours, deter vermin, protect surrounding areas, and make it a user-friendly and safe area.

The *NSW Better practice guide for resource recovery in residential developments (2019)* also states that better practice bin storage areas should achieve more than the minimum compliance requirements, which are as follows:

- Ensuring BCA compliance, including ventilation. Where required, ventilation system must comply with AS1668.4-2012 The use of ventilation and air conditioning in buildings.
- Ensuring storage areas are well lit (sensor lighting preferred) and have lighting available 24 hours a day.
- Provision of bin washing facilities, including taps for hot and cold water provided through a centralised mixing valve. The taps must be protected from bins and be located where they can be easily accessed even when the area is at bin capacity.
- Floor constructed of concrete at least 75mm thick.
- Floor graded so that any water is directed to a sewer authority approved drainage connection to ensure washing bins and/or waste storage areas do not discharge flow into the stormwater drain.
- Provision of smooth, cleanable and durable floor and wall surfaces that extend up the wall to a height equivalent to any bins held in the area.
- Ensuring ceilings are finished with a smooth-faced non-absorbent material capable of being cleaned.
- All surfaces (walls, ceiling and floors) finished in a light colour.

12.1 ADDITIONAL CONSIDERATIONS

- Tap height and light switch height of 1.6m;
- Storm water access preventatives (grate);
- All walls painted with light colour and washable paint;
- Conform to the Building Code of Australia, Australian standards and local laws; and Childproofing and public/operator safety shall be assessed and ensured.

13.0 USEFUL CONTACTS

EFC does not warrant or make representation for goods or services provided by suppliers.

LOCAL COUNCIL

Kempsey Shire Customer Service Ph: (02) 6566 3200 E: ksc@kempsey.nsw.gov.au

PRIVATE WASTE COLLECTION PROVIDER

Capital City Waste Services	Ph: 02 9599 9999	E: service@ccws.net.au
Sydney Waste	Ph: 02 8661 0031	
Waste Clear	Ph: 1300 525 352	E: admin@wasteclear.com.au

BIN MOVING DEVICE SUPPLIERS

Elephants Foot Equipment	Ph: 1300 435 374	E: equipment@elephantsfoot.com.au
Sitecraft	Ph: 1300 363 152	E: sales@sitecraft.com.au

BALER SUPPLIERS

Elephants Foot Equipment	Ph: 1300 435 374	E: equipment@elephantsfoot.com.au
--------------------------	------------------	---

ORGANIC DIGESTERS AND DEHYDRATORS

Elephants Foot Equipment	Ph: 1300 435 374	E: equipment@elephantsfoot.com.au
Waste Master	Ph: 1800 614 272	E: hello@wastemasterpacific.com.au

COOKING OIL CONTAINERS AND DISPOSAL

Cookers	Ph: 1300 882 299	E: info@cookers.com.au
Auscol	Ph: 1800 629 476	E: sales@auscol.com

ODOUR CONTROL

Elephants Foot Equipment	Ph: 1300 435 374	E: equipment@elephantsfoot.com.au
--------------------------	------------------	---

SOURCE SPERATION BINS

Method Recycling	Ph: 0499 890 455
------------------	------------------

BINS AND BIN EQUIPMENT

Elephants Foot Equipment	Ph: 1300 435 374	E: equipment@elephantsfoot.com.au
SULO	Ph: 1300 364 388	E: sulosales@pactgroup.com

CHUTES, COMPACTORS AND EDIVERTER SYSTEMS

Elephants Foot Chute Solutions	Ph: 1300 435 374	E: chutes@elephantsfoot.com.au
--------------------------------	------------------	---

APPENDIX A: ARCHITECTURAL PLANS

APPENDIX: A.1 GROUND FLOOR PLAN



Source: King and Campbell, Project No: 7247, Date: 21/02/2025, Rev: B, MASTERPLAN

APPENDIX B: PRIMARY WASTE MANAGEMENT PROVISIONS

APPENDIX: B.1 TYPICAL BIN SPECIFICATIONS


Mobile bins

Mobile bins come in a variety of sizes and are designed for lifting and emptying by purpose-built equipment.

Mobile bins with capacities of up to 1700L must comply with *AS4123.6-2006 Mobile waste containers* which specifies standard sizes and sets out the colour designations for the bodies and lids of mobile waste containers indicating the type of materials they are used to collect.

The most common bin sizes are provided below, although not all sizes are shown. The dimensions are a guide only and differ slightly between manufacturers. Some bins have flat or domed lids and are used with different lifting devices. Refer to *AS4123.6-2006* for further details.

Table G1.1: Average dimension ranges for two-wheel mobile bins




Bin capacity	80L	120L	140L	240L	360L
Height (mm)	870	940	1065	1080	1100
Depth (mm)	530	530	540	735	820
Width (mm)	450	485	500	580	600
Approximate footprint (m ²)	0.24	0.26–0.33	0.27-0.33	0.41–0.43	0.49
Approximate weight (kg)	8.5	9.5	10.4	15.5	23
Approximate maximum load (kg)	32	48	56	96	Not known

Wheelie bin

Sources include Sulo, Single Waste, Cleanaway, SUEZ, just wheelie bins and Perth Waste for two-wheel mobile bins

Table G1.2: Average dimension ranges for four-wheel bulk bins



Bin capacity	660L	770L	1100L	1300L	1700L
Height (mm)	1250	1425	1470	1480	1470
Depth (mm)	850	1100	1245	1250	1250
Width (mm)	1370	1370	1370	1770	1770
Approx footprint (m ²)	0.86–1.16	1.51	1.33–1.74	2.21	2.21
Approx weight (kg)	45	Not known	65	Not known	Not known
Approx maximum load (kg)	310	Not known	440	Not known	Not known

Dome or flat lid container

Sources include Sulo, Signal Waste, Cleanaway, SUEZ, Just Wheelie Bins and Perth Waste

Source: *Better Practice Guide For Resource Recovery In Residential Developments 2019, NSW Environmental Protection Authority*

APPENDIX: B.2 SIGNAGE FOR WASTE AND RECYCLING BINS

Waste signs

Signs and educational materials perform several functions including:

- informing residents why it is important to recover resources and protect the environment
- providing clear instructions on how to use the bins and services provided
- alerting people to any dangers or hazards within the bin storage areas.

All waste, recycling and organic bins should be Australian Standard colours and clearly and correctly labelled, such as by a sticker on the lid and/or the body of the bin.

Communal bin storage areas should be clearly signposted with signs outlining how to correctly separate waste into the bins provided. The local council responsible for waste services may be a good source of signs and posters and can advise on what signs are suitable.

Information on who to contact to find out more about the recycling and/or other resource recovery services in the building should also be displayed in communal areas, such as on a noticeboard.

The Planet Ark website also has resources available free of charge for use by businesses and councils. These signs can be found at businessrecycling.com.au/research/signage.cfm

Figure I1.1: Examples of waste wall posters (EPA supplied)



Figure I1.2: Examples of bin lid stickers (EPA supplied)



Source: *Better Practice Guide For Resource Recovery In Residential Developments 2019*, NSW Environmental Protection Authority

Problem waste signs

The EPA has also produced a range of images and signs that can be used for problem wastes, such as fluoro globes and tubes, household and car batteries, e-waste and smoke detectors. To access these resources, contact the NSW EPA. Some examples are shown below.

Figure I2.1: Problem waste signs



Safety signs

The use of safety signs for waste resource recovery rooms must comply with *AS1319 Safety signs for occupational environments*. Safety signs must be used to regulate and control safety related to behaviour, warn of hazards and provide emergency information, including fire protection information. Suitable signs should be decided for each development as required.

Figure I3.1: Example safety signs



Source: *Better Practice Guide For Resource Recovery In Residential Developments 2019*, NSW Environmental Protection Authority

APPENDIX: B.3 EXAMPLE COLLECTION VEHICLE INFORMATION

General

Appropriate heavy rigid vehicle standards should be incorporated into the road and street designs in new developments where onsite collections are proposed. Road and street designs must comply with relevant Acts, regulations, guidelines, and codes administered by Austroads, Standards Australia, NSW Roads and Maritime Services, WorkSafe NSW and any local council traffic requirements.

Applicants and building designers should consult with councils and other relevant authorities before designing new roads or streets and access points for waste collection vehicles to establish specific design requirements.

Table H4.1: Australian Standards for turning circles for medium and heavy rigid class vehicles

Vehicle class	Overall length (m)	Design width (m)	Design turning radius (m)	Swept circle (m)	Clearance (travel) height (m)
Medium rigid vehicle	8.80	2.5	10.0	21.6	4.5
Heavy rigid vehicle	12.5	2.5	12.5	27.8	4.5

Source: *Better Practice Guide For Resource Recovery In Residential Developments 2019*, NSW Environmental Protection Authority

Large collection vehicles

Waste collection vehicles may be side-loading, rear-loading, front-lift-loading, hook or crane lift trucks. Vehicle dimensions vary by collection service, manufacturer, make and model. It is not possible to provide definitive dimensions, so architects and developers should consult with the local council and/or contractors.

The following characteristics represent typical collection vehicles and are provided for guidance only. Reference to *AS2890.2 Parking facilities: off-street commercial vehicle facilities* for detailed requirements, including vehicle dimensions, is recommended.

Table B2.1: Collection vehicle dimensions

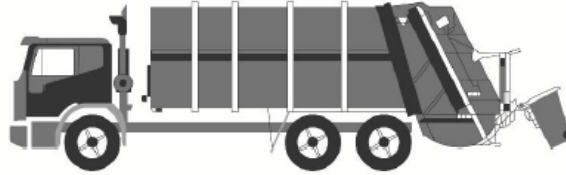
Vehicle type	Rear-loading	Side-loading*	Front-lift-loading	Hook truck	Crane truck
Length overall (m)	10.5	9.6	11.8	10.0	10.0
Width overall (m)	2.5	2.5	2.5	3.0	2.5
Travel height (m)	3.9	3.6	4.8	4.7	3.8
Operational height for loading (m)	3.9	4.2	6.5	3.0	8.75
Vehicle tare weight (t)	13.1	11.8	16.7	13.0	13.0
Maximum payload (t)	10.0	10.8	11.0	14.5	9.5
Turning circle (m)	25.0	21.4	25.0	25.0	18

* The maximum reach of a side arm is 3 m.

Sources: JJ Richards, SUEZ, MacDonald Johnson, Cleanaway, Garwood, Ros Roca, Bingo and Edbro. Figures shown represent the maximum dimensions for each vehicle type.

Rear-loading collection vehicles

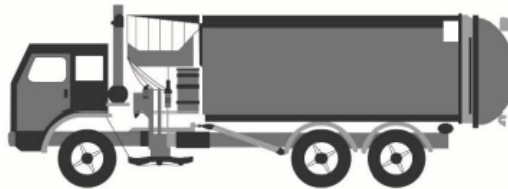
These vehicles are commonly used for domestic waste collections from MUDs and RFBs and sometimes for recycling. They can be used to collect waste stored in mobile bins or bulk bins, particularly where bins are not presented at the kerbside. They are also used for collecting bulky waste.



Rear-loading waste collection vehicle

Side-loading collection vehicles

This is the most commonly used vehicle for domestic waste, recycling and organics collections. It is only suitable for collecting mobile bins up to 360L in capacity.



Side-loading waste collection vehicle

Front-lift-loading collection vehicles

These vehicles are commonly used for collecting commercial and industrial waste. They can only collect specially designed front-lift bulk bins and not mobile bins.



Front-lift-loading waste collection vehicle

Small collection vehicles

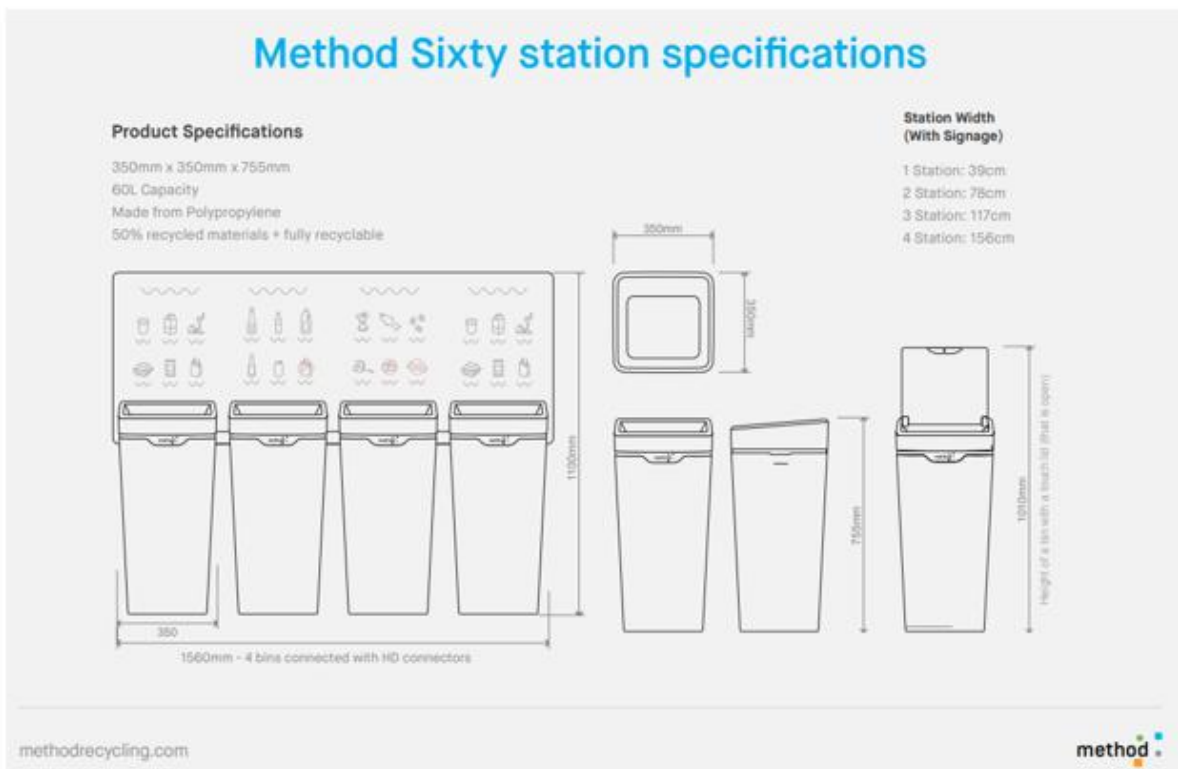
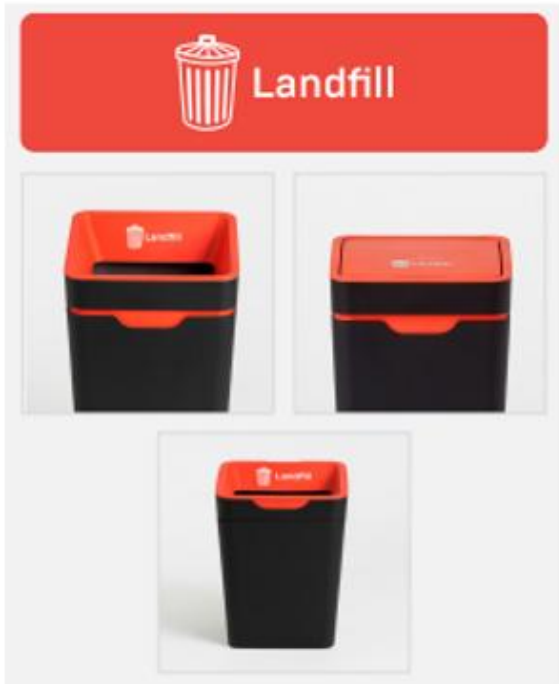
Typically, councils and their contractors operate with large collection vehicles (heavy rigid class vehicles) because they carry greater payloads and allow for more cost-effective collection services. Some councils, or their contractors, may have smaller collection vehicles in their fleet. Early discussion with the council is important to confirm this, but it should not be assumed that the council will have access to small collection vehicles.

The waste management systems and the location of the collection point should always be designed so that the council can provide the standard domestic waste service.

Source: *Better Practice Guide For Resource Recovery In Residential Developments 2019*, NSW Environmental Protection Authority

APPENDIX C: SECONDARY WASTE MANAGEMENT PROVISIONS

APPENDIX: C.1 EXAMPLE SOURCE SEPARATION RECEPTACLES



Source: Method Recycling - www.methodrecycling.com