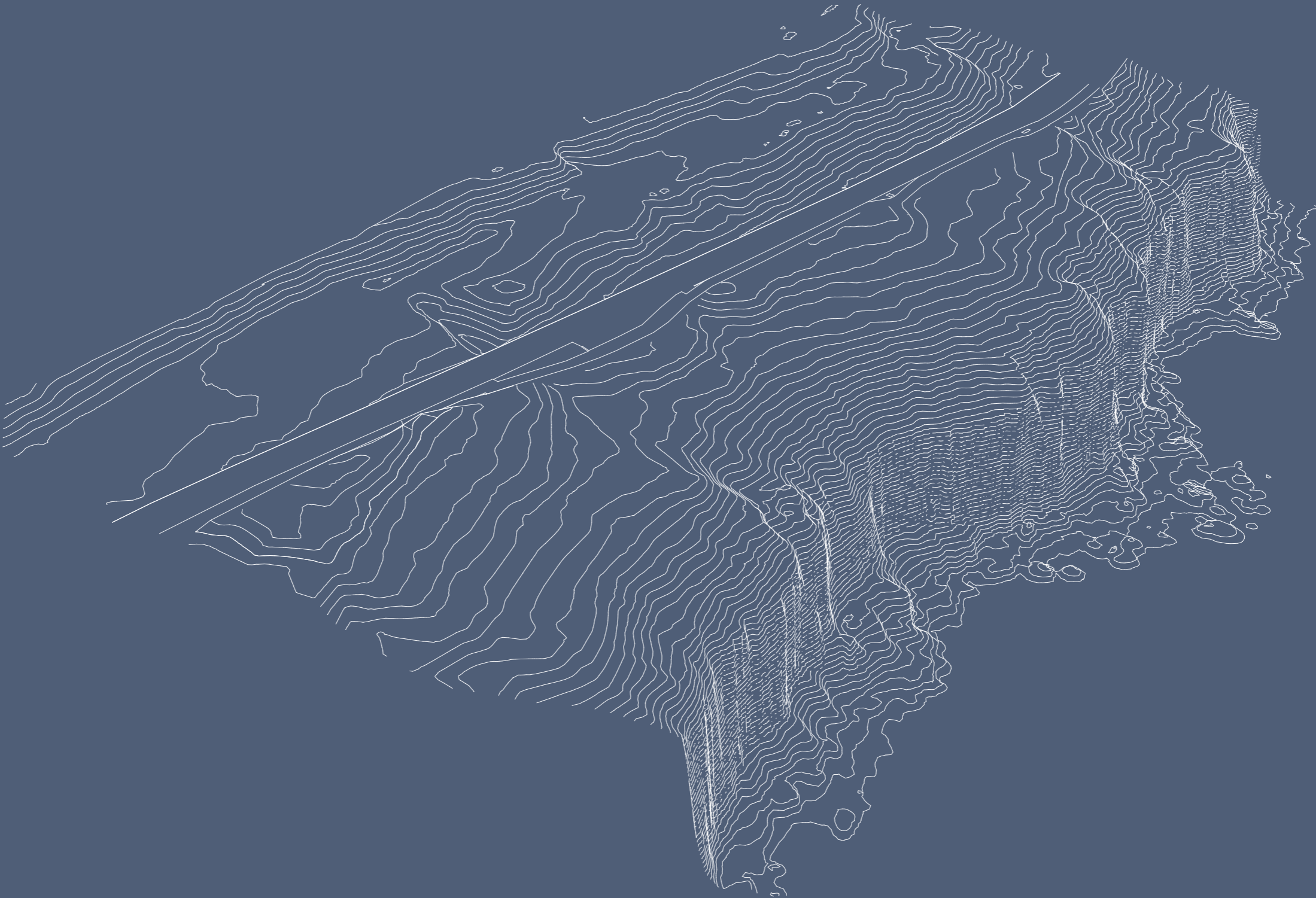
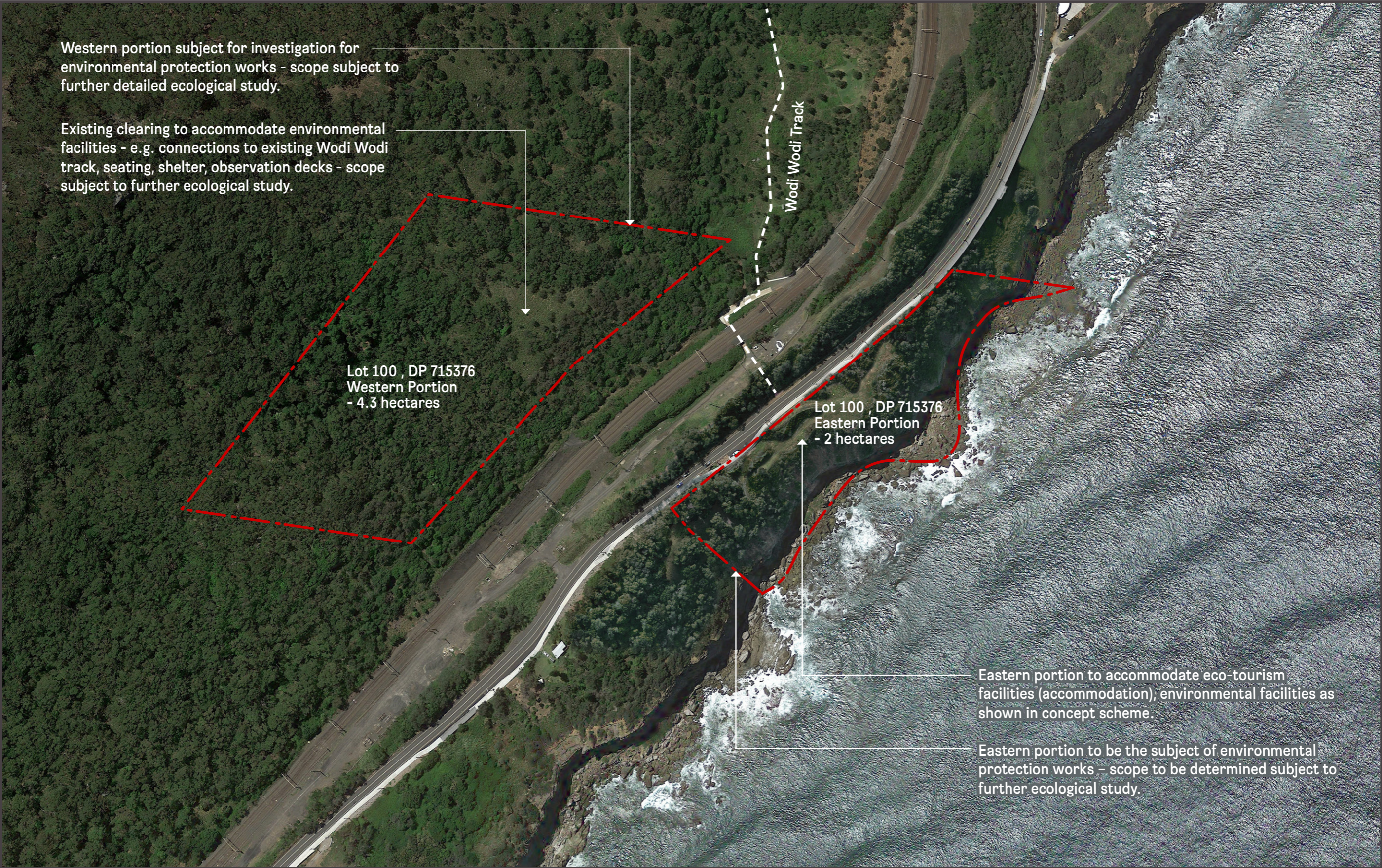


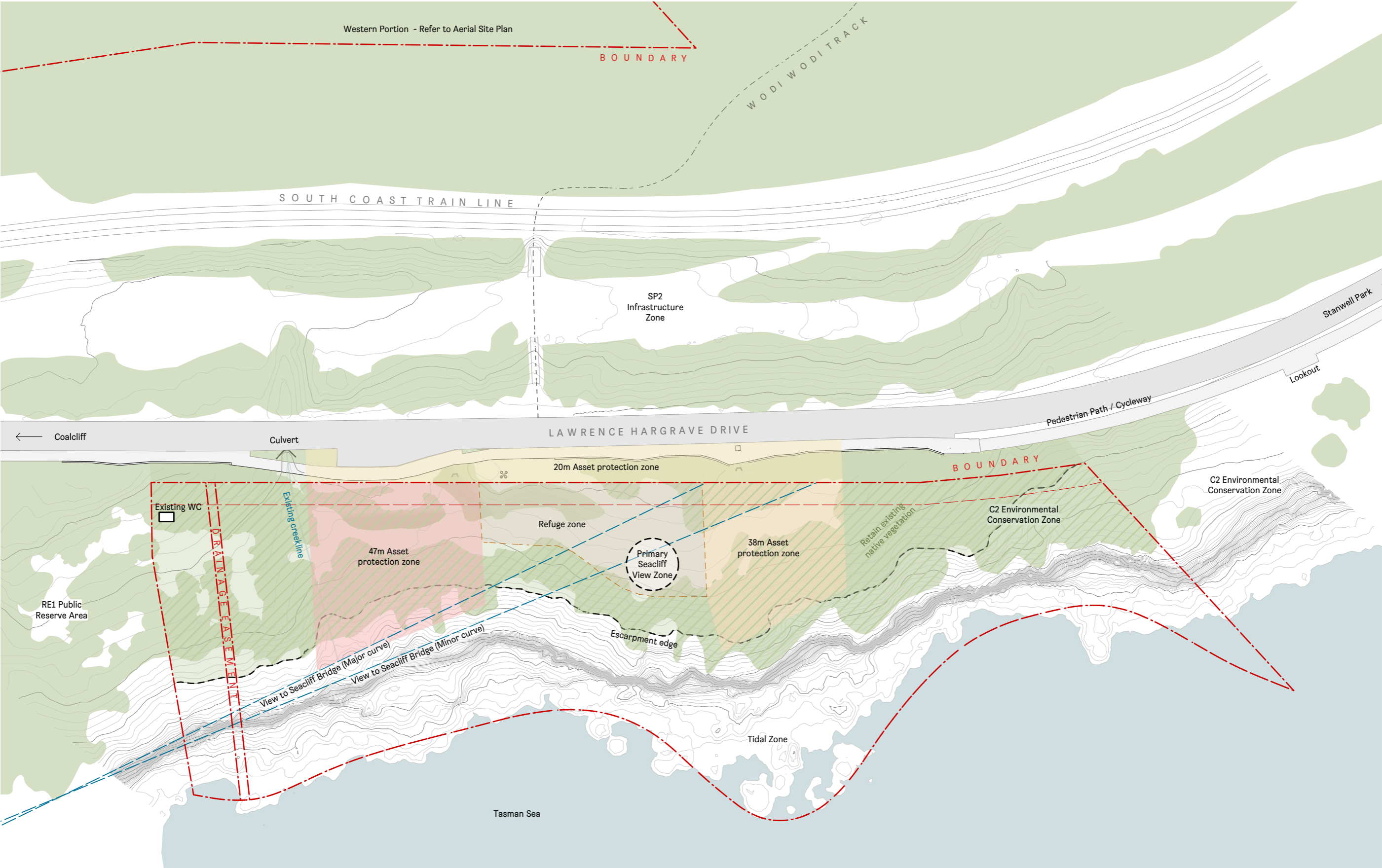
Coalcliff Ecotourism  
Vision Study



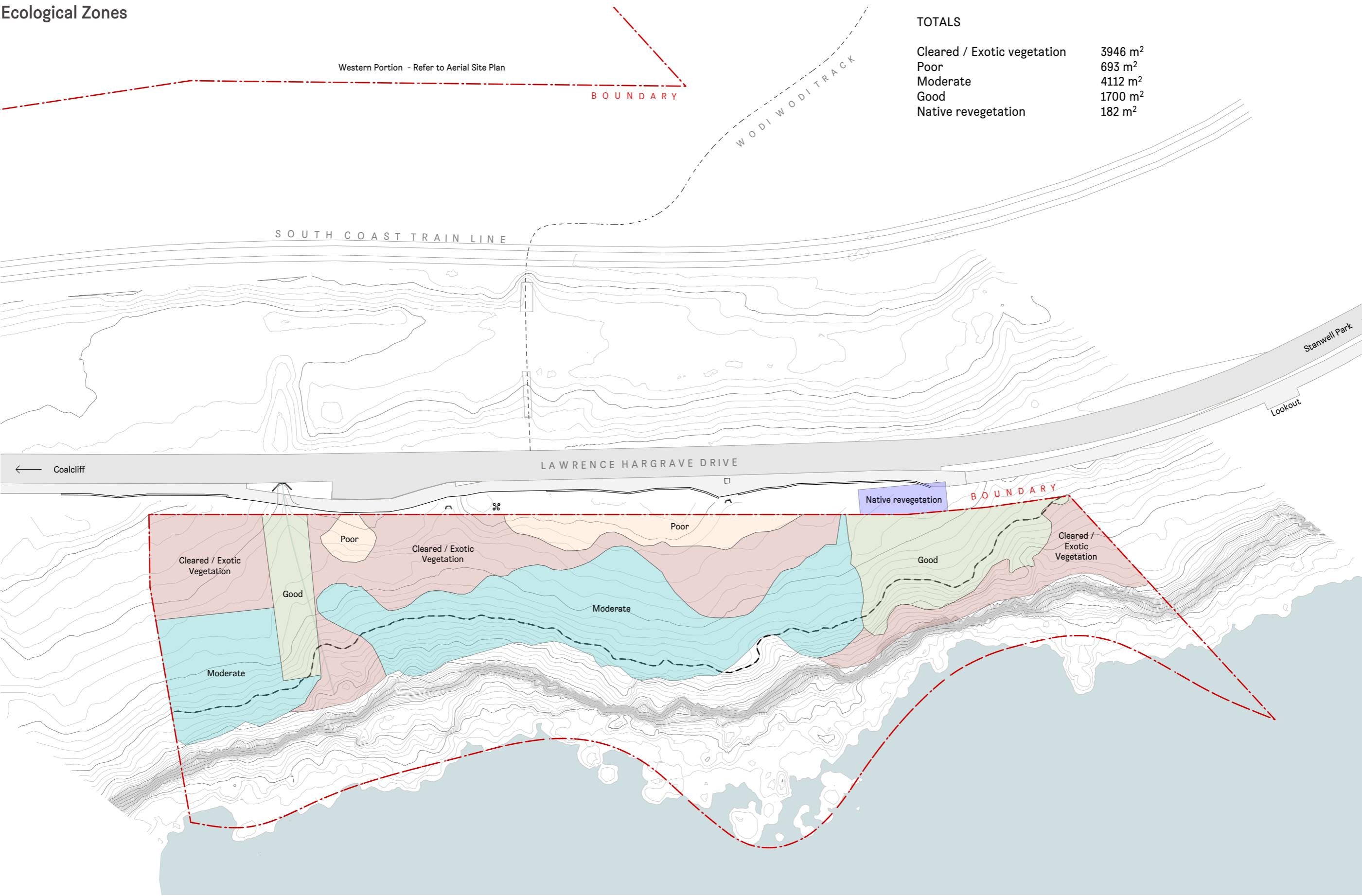
Aerial Site Plan



Site Analysis



Ecological Zones



View Study - Seacliff Bridge



A



View from easternmost clearing on site - Seacliff Bridge visible.

B



View from southernmost clearings on site - Seacliff Bridge obscured.

C



View from easternmost curve of Seacliff Bridge - site visible.

D



View from southernmost end of Seacliff Bridge - site visible.

E - View from northernmost curve of Seacliff Bridge consistent with westernmost curve - site visible.

View Study - Bald Hill



A



View from northern end of site - Bald Hill obscured by dense vegetation.

A



View from northern end of site - Bald Hill obscured by dense vegetation.

B



View from Bald Hill - dense vegetation on site visible.

B



View from Bald Hill (detail) - dense vegetation on site visible.

References



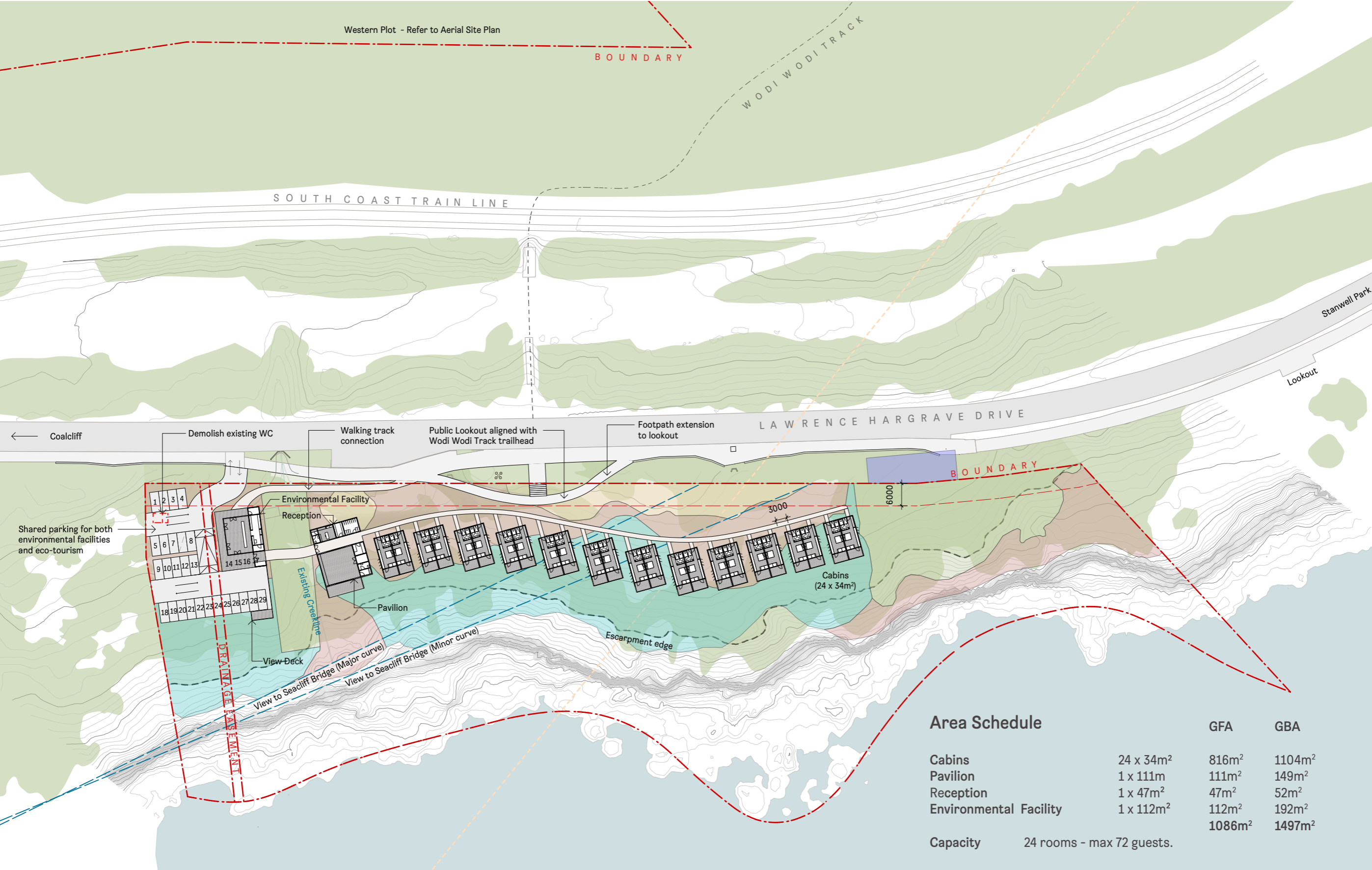
Three Capes Track  
Tasmania, 2018  
Andrew Burns Architecture

Light to Light  
Beowa National Park, 2020 -  
Andrew Burns Architecture

Krakani Lumi  
Mount William, 2017  
Taylor and Hinds Architects

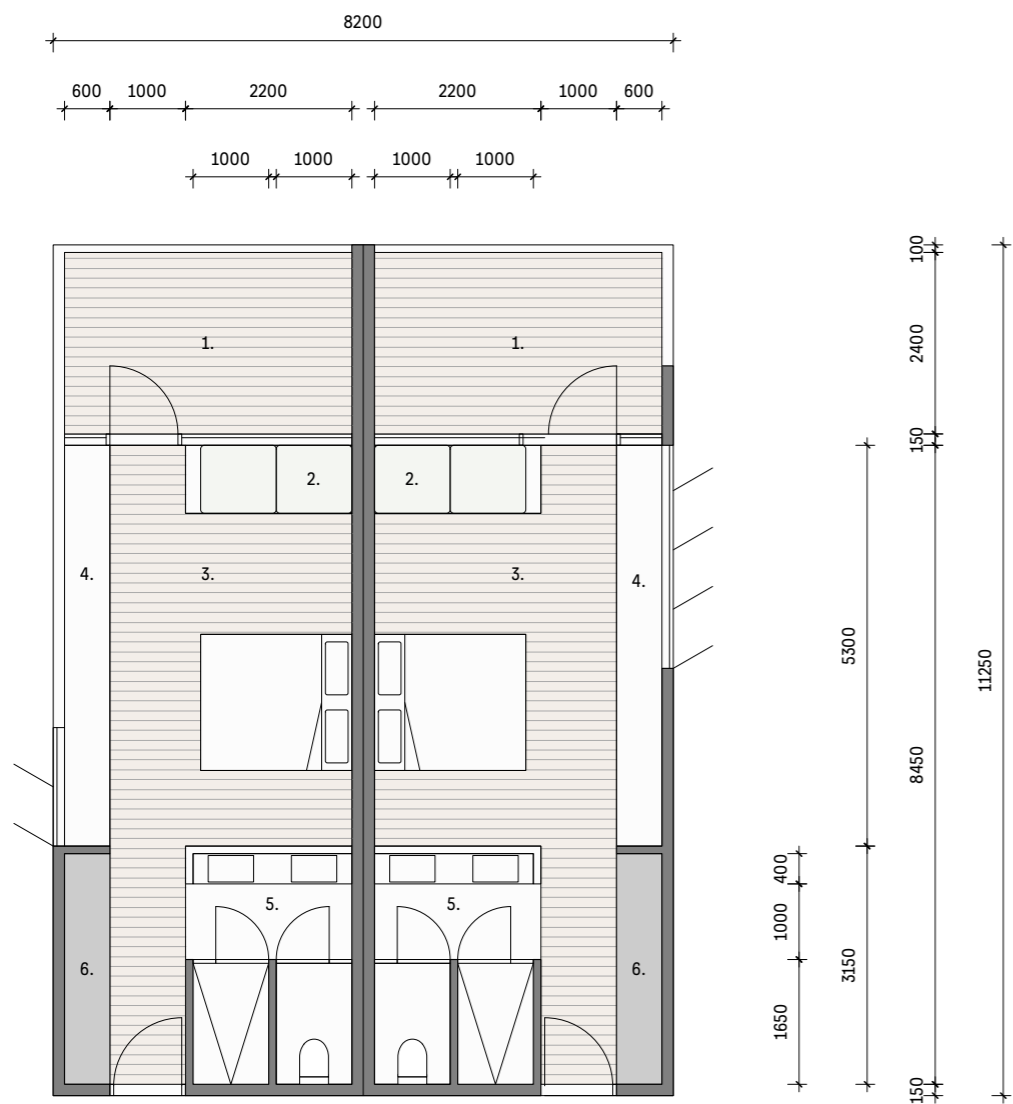
Saffire Resort  
Coles Bay, 2010  
Circa Architecture

Site Plan



Typical Cabin Plan

Total GFA per Cabin - 34m²

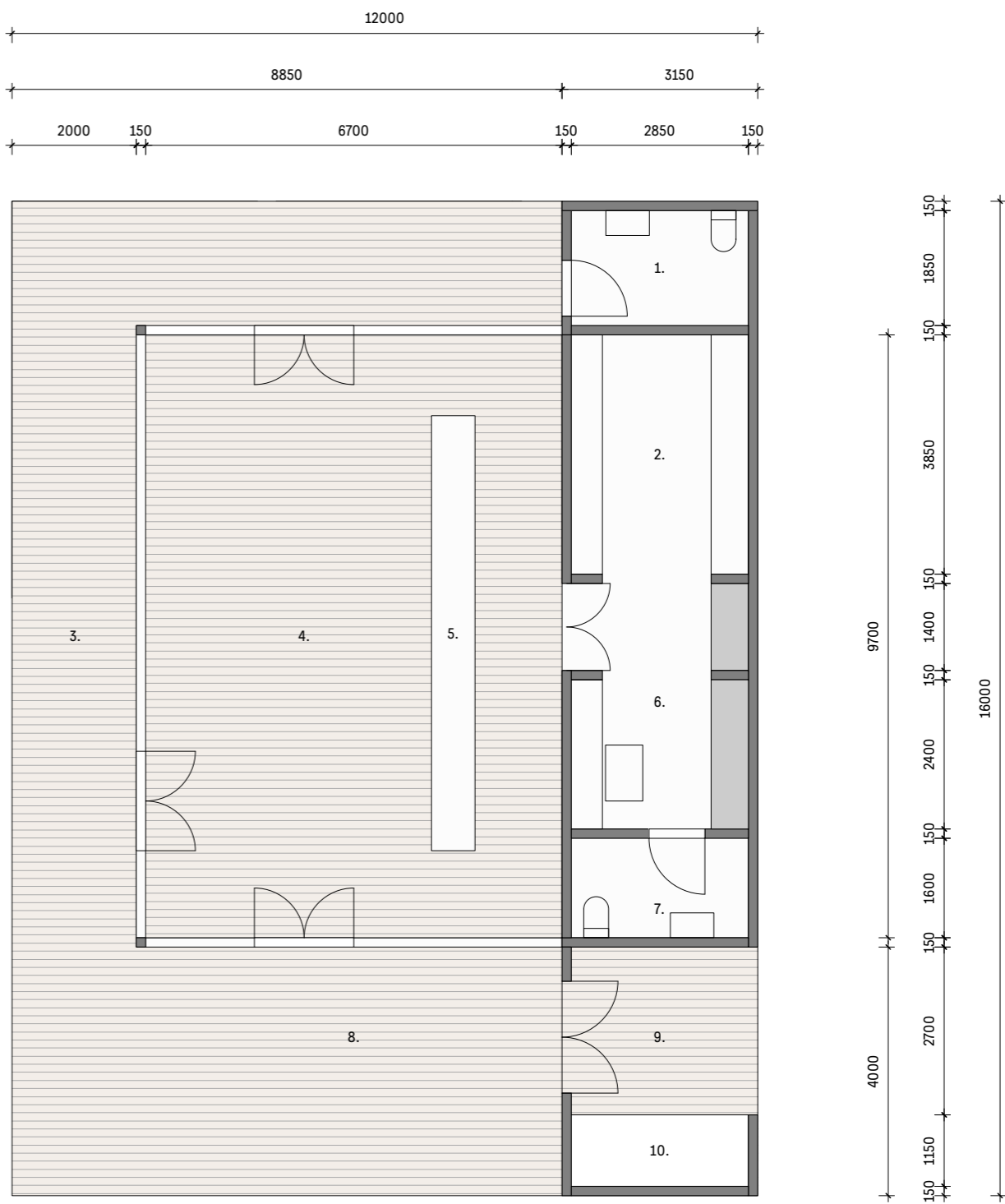


- 1. View deck
- 2. Lounge (Bed 2)
- 3. Bedroom
- 4. Operable shutters
- 5. Bathroom
- 6. Kitchenette

- 1. Visitor WC
- 2. Store
- 3. Entry deck
- 4. Visitor space
- 5. Reception desk
- 6. Office
- 7. Staff WC
- 8. View deck
- 9. Exit to cabins
- 10. Services

Environmental Facility Plan

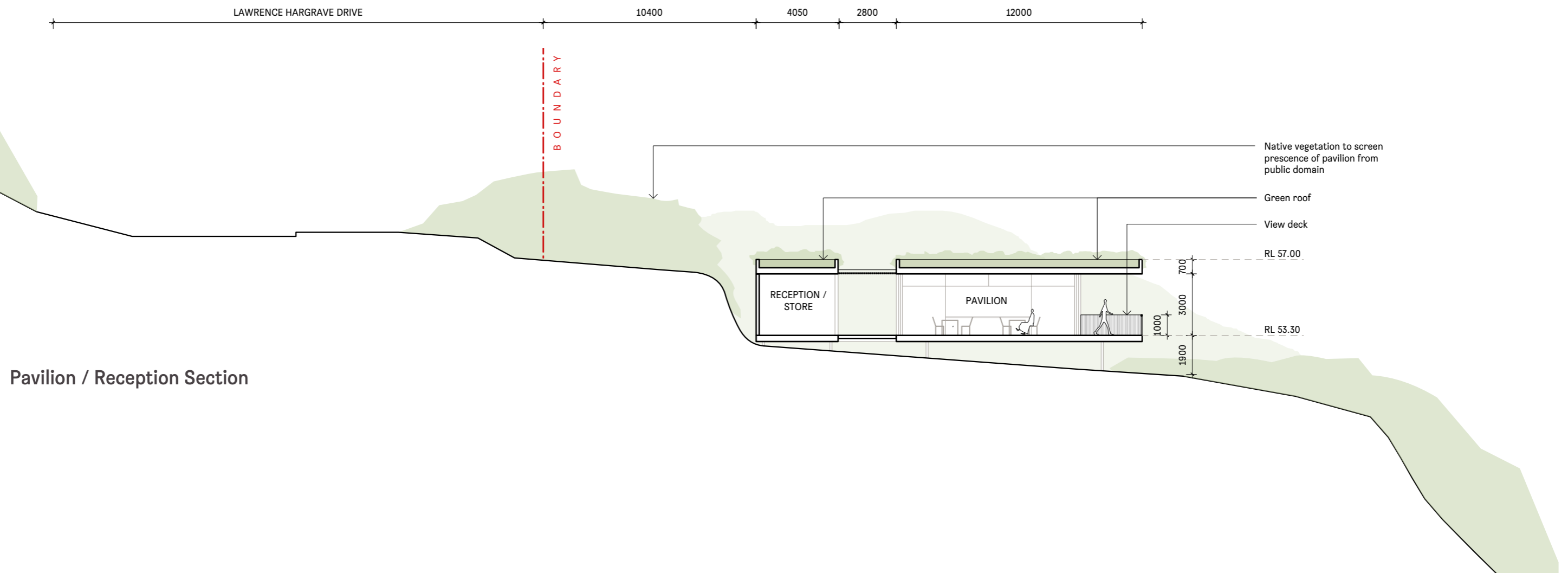
Total GFA - 112m²



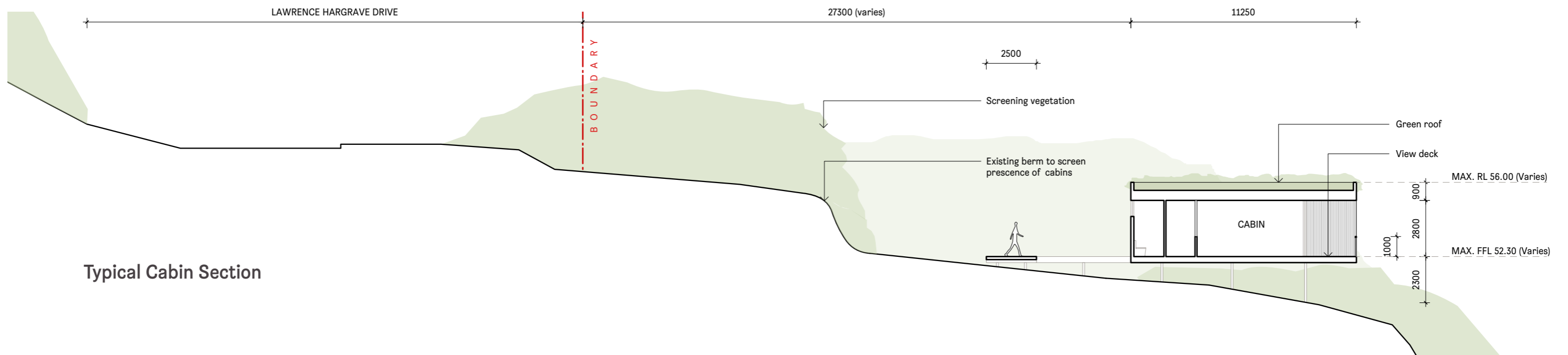
Pavilion / Reception Plan

Reception GFA - 47m<sup>2</sup>  
Pavilion GFA - 111m<sup>2</sup>

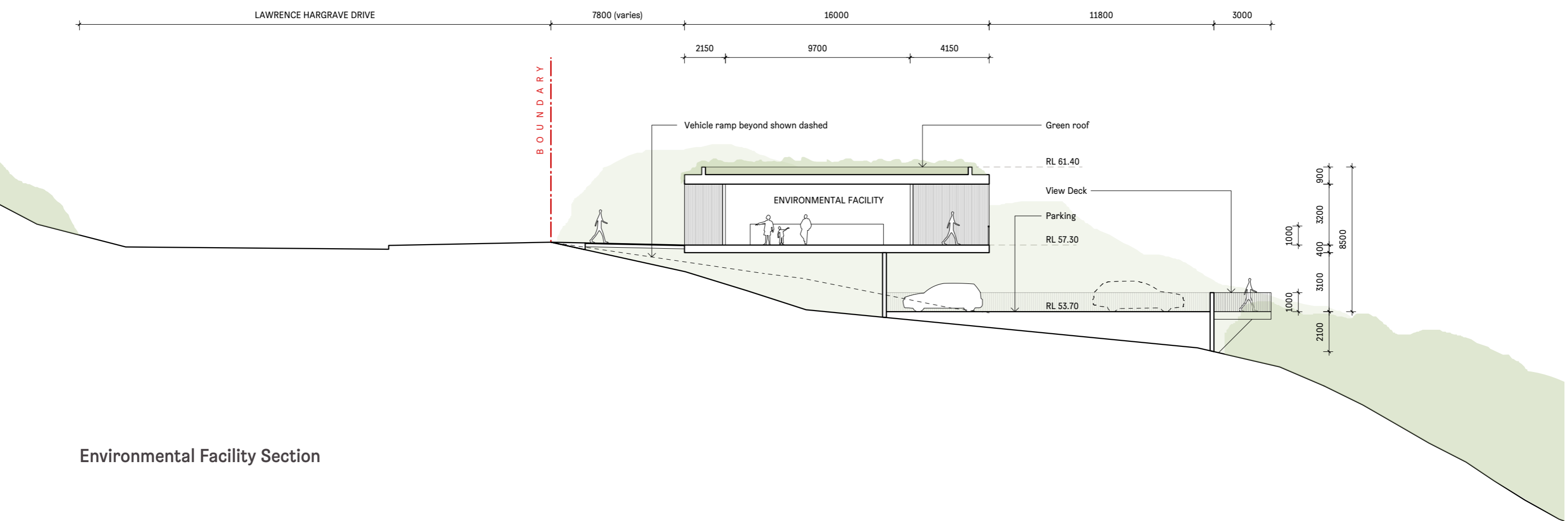




Pavilion / Reception Section

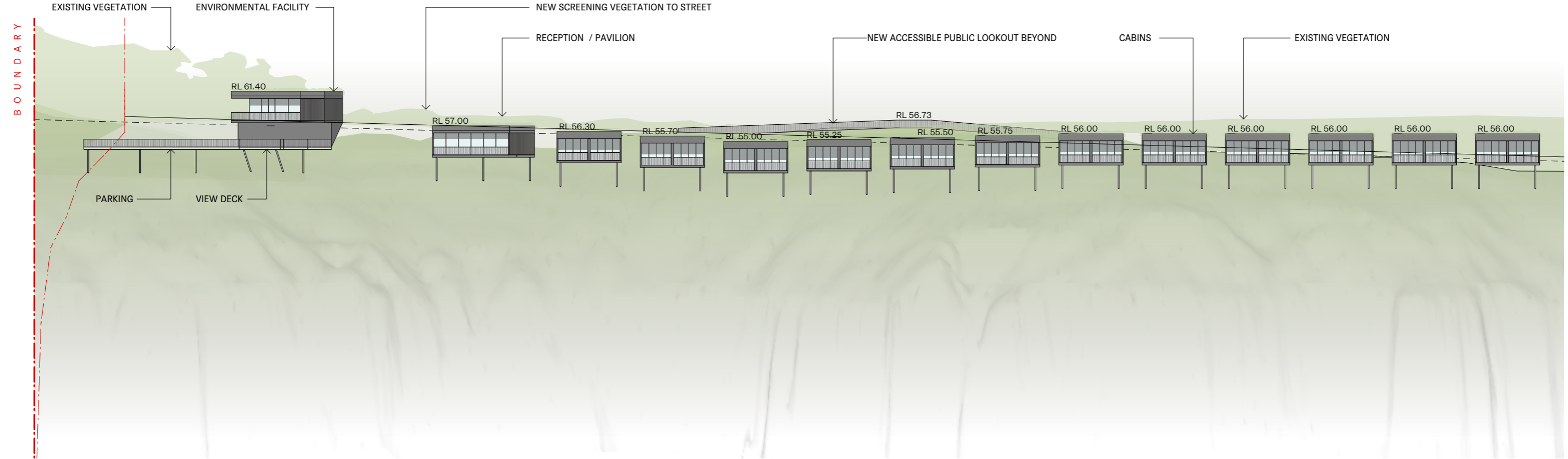
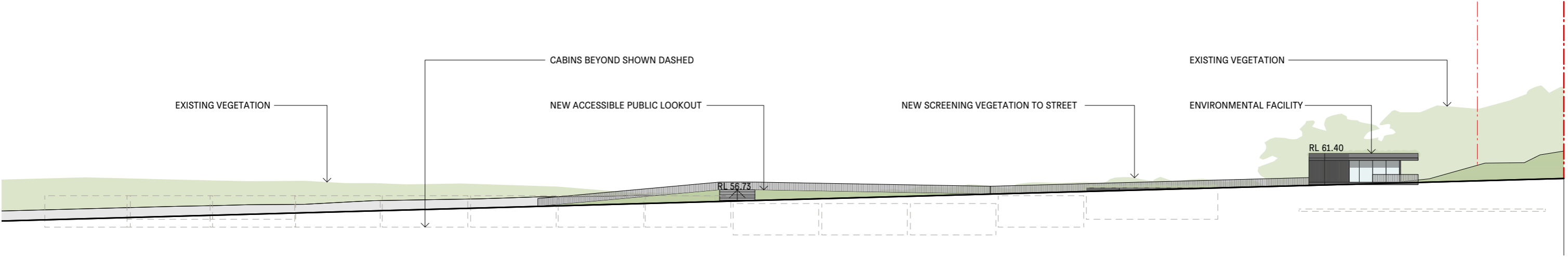


Typical Cabin Section



Environmental Facility Section

Street / Cliff Elevations



Thank you for your consideration of this proposal.

Prepared by Architecture AND  
1/617 Elizabeth St, Redfern, NSW 2016  
Nominated Architect: A. Burns #7447  
+61 2 9199 0625