



# Social Impact Scoping Report

## Devlins Bridge Wind Farm

### Stromlo Energy

Prepared by:

#### **SLR Consulting Australia**

Tenancy 202 Submarine School, Sub Base  
Platypus, 120 High Street, North Sydney NSW  
2060, Australia

SLR Project No.: 620.040612.00001

15 April 2024

Revision: 1.0

## Revision Record

Revision	Date	Prepared By	Checked By	Authorised By
0.1	27 February 2024	Roland Short	Esther Diffey	
1.0	15 April 2024	Roland Short	Esther Diffey	

## Basis of Report

This report has been prepared by SLR Consulting Australia (SLR) with all reasonable skill, care and diligence, and taking account of the timescale and resources allocated to it by agreement with Stromlo Energy (the Client). Information reported herein is based on the interpretation of data collected, which has been accepted in good faith as being accurate and valid.

This report is for the exclusive use of the Client. No warranties or guarantees are expressed or should be inferred by any third parties. This report may not be relied upon by other parties without written consent from SLR.

SLR disclaims any responsibility to the Client and others in respect of any matters outside the agreed scope of the work.



## Table of Contents

<b>Basis of Report</b> .....	<b>i</b>
<b>Acronyms and Abbreviations</b> .....	<b>iii</b>
<b>1.0 Introduction</b> .....	<b>1</b>
1.1 Report purpose .....	1
1.2 The Project.....	1
<b>2.0 Social Locality</b> .....	<b>1</b>
<b>3.0 Rapid Review of social conditions</b> .....	<b>4</b>
3.1 Key social indicators.....	4
3.1.1 Summary of vulnerabilities and opportunities: .....	5
<b>4.0 Consultation</b> .....	<b>6</b>
4.1 General community engagement.....	6
4.1.1 Narrandera community open day .....	6
4.1.2 Community Christmas Markets.....	6
4.1.3 Yanco Weir RFS depot information session .....	6
4.1.4 Leeton Farmers and Makers Market.....	7
4.2 Specific stakeholder groups .....	7
<b>5.0 Scoping</b> .....	<b>8</b>
<b>6.0 SIA Approach</b> .....	<b>11</b>
6.1 Consultation and research methods .....	11
<b>7.0 References</b> .....	<b>13</b>

## Tables in Text

Table 1 Key indicators .....	4
Table 2 Summary of social characteristics for scoping .....	5
Table 3 Consultation by stakeholder group.....	7
Table 4 Scoped social impacts (Interpreted from the SIA scoping worksheet) .....	9

## Figures in Text

Figure 1 Project location and social locality .....	3
---	---

## Appendices

**Appendix A SIA scoping worksheet**



## Acronyms and Abbreviations

ABS	Australian Bureau of Statistics
IRSAD	Index of Relative Socio-economic Advantage and Disadvantage
LGA	Local Government Area
NSW	New South Wales
Project	Devlins Bridge Wind Farm
SA3	Statistical Area 3
SAL	Suburb and Locality
SEIFA	Socio-Economic Indexes for Areas
SIA	Social Impact Assessment
SIA Guideline	Social Impact Assessment Guideline for State Significant Projects
SLR	SLR Consulting
Stromlo	Stromlo Energy



## 1.0 Introduction

Stromlo Energy (Stromlo) engaged SLR Consulting (SLR) to prepare this Social Impact Assessment (SIA) scoping report for the Devlins Bridge Wind Farm (the Project ).

### 1.1 Report purpose

The SIA scoping report forms part of the SIA Scoping process detailed in the Social Impact Assessment Guideline for State Significant Projects (SIA Guideline) (New South Wales Department of Planning and Environment, 2023).

The report:

- Summarises Project consultation undertaken to date
- Identifies the Project's social locality for the SIA
- Provides Initial analysis of the social baseline
- Summarises the initial evaluation of potential social impacts per the SIA Scoping Worksheet (Appendix A)
- Outlines the level of assessment and approach to delivery of the SIA.

### 1.2 The Project

The proposed Devlins Bridge Wind Farm would be located approximately 25 km west of Narrandera, to the south of the Sturt Highway. The Project, when operational, will generate up to 680 MW of power, the equivalent of 369,000 homes.

## 2.0 Social Locality

The social locality was defined by examining the nature of the Project, the spatial characteristics of proximal communities and how positive and negative impacts may be reasonably perceived or experienced by different people across different geographical areas. The following factors influenced the development of the proposed social locality:

- The highly dispersed rural settlement pattern proximal to the Project area.
- Proximity to service town/s.
- Regional labour force mobility and the interconnected nature of economic activity across the region.

The social locality comprises different Australian Bureau of Statistics (ABS) Statistical Geography and is stratified across different geographical levels to allow for detailed comparative analysis. These levels are:

- Local Study Area: Euroley Suburb and Locality (SAL), the suburb that the Project would be located in, where residents are most likely to experience direct social impacts associated with the Project.
- Host Local Government Area (LGA) and Community: The Narrandera LGA, which incorporates the town of Narrandera as the host LGA and nearest community to the Project, may experience a range of direct and indirect social impacts associated with the Project.
- Regional Study Area: Griffith – Murrumbidgee (West) Statistical Area (SA) 3. The SA3 incorporates the Narrandera, Leeton and Griffith LGAs, as well as sections of



the Carrathool, Murrumbidgee and Federation LGAs. The SA3 most closely aligns with the geographical extent of communities within 1-hour drive from the Project site and would represent the source of the local labour market.



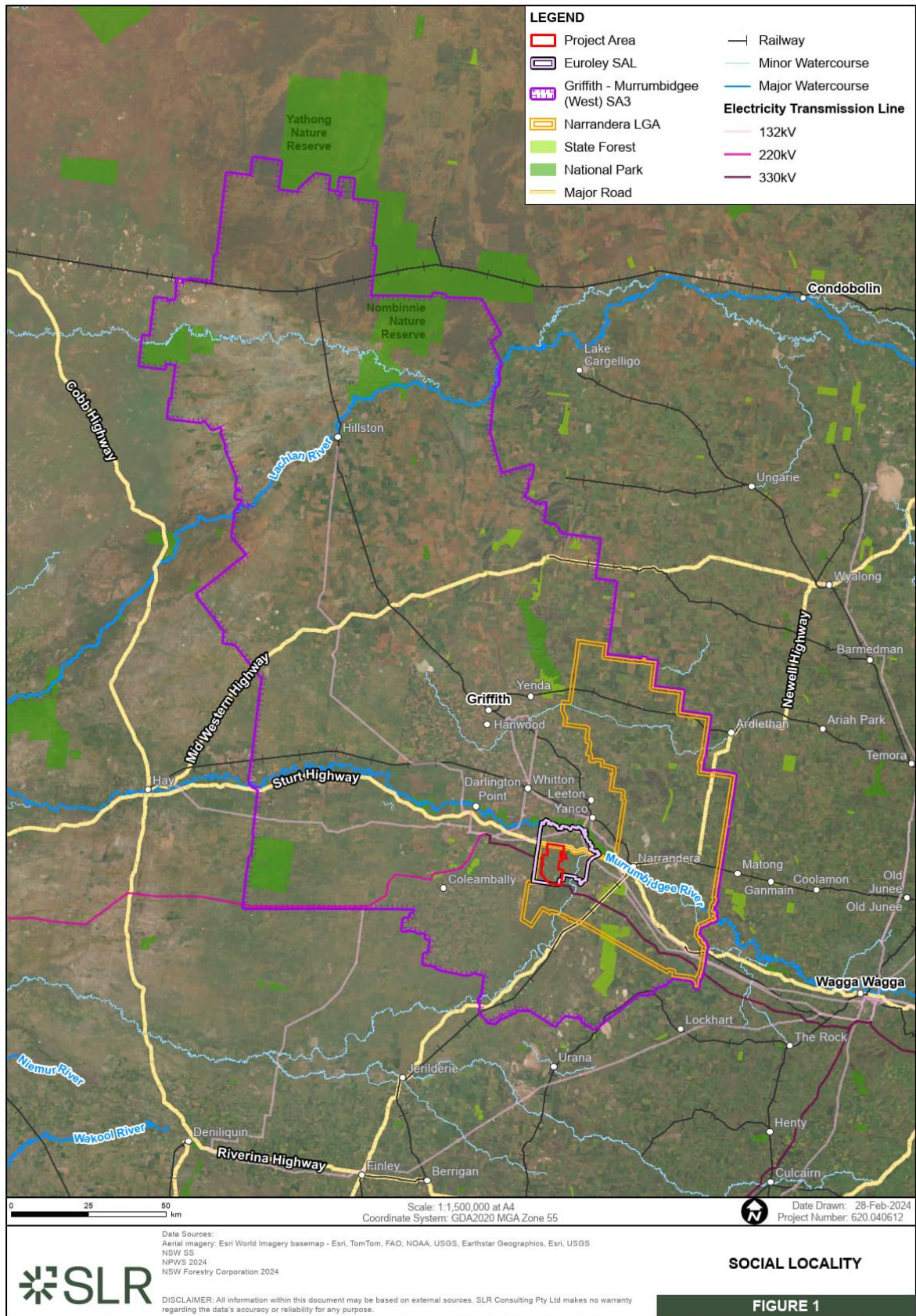


Figure 1 Project location and social locality



## 3.0 Rapid Review of social conditions

The rapid review of existing social conditions allows for the identification of population characteristics across social localities to inform scoping and the development of a detailed social baseline in the SIA report. The rapid review examines key indicators covering population, age, culture, education and employment, household types, and tenure..

The rapid review also looks at the Socio-Economic Indexes for Areas (SEIFA) Index of Relative Socio-economic Advantage and Disadvantage (IRSAD), which summarises information about the economic and social conditions of people and households within an area, including both relative advantage and disadvantage measures. The IRSAD measures an area's economic and social conditions. A low score means disadvantage, while a high score means advantage.

### 3.1 Key social indicators

Table 1 shows a range of key social indicators for each level of social locality compared to the NSW state average. Where there is a variance from the state average by more (green) or less (red) than five per cent this has been noted and has informed scoping.

**Table 1 Key indicators**

	Local	LGA	SA3	NSW
Population	76	5,698	49,559	8,072,163
Median Age	38	44	38	39
Aboriginal and/or Torres Strait Islander	12.0%	13.0%	7.0%	3.4%
Dwellings	30	2,141	17,272	2,900,468
Average Household size	2.7	2.3	2.6	2.6
Households renting	23.0%	24.0%	29.7%	32.5%
Households owned	43.0%	70.0%	64.7%	64.0%
Couples with children	60.0%	35.0%	42.2%	44.7%
Lone person householders	20.0%	32.0%	26.9%	25.0%
Changed address in the previous 5 years	21.0%	29.0%	32.5%	37.6%
Language other than English	0.0%	0.0%	3.3%	4.9%
University qualification	21.0%	11.0%	13.0%	29.0%
Trade qualification	25.0%	22.0%	22.8%	18.9%
Median weekly household income	\$1,625	\$1,184	\$1,535	\$1,829
Unemployment rate*	0.0%	5.0%	3.4%	4.9%
Participation rate	-	54.1%	62.0%	59.2%
Has a long term health condition	26.3%	36.1%	31.5%	30.9%
Low income Households (less than \$650 per week)	10.0%	24.1%	15.6%	15.3%
SEIFA (IRSDA Percentile)	78	15		



### 3.1.1 Summary of vulnerabilities and opportunities

Table 2 shows population highlights that have informed scoping and if each variable would be considered a vulnerability and/or an opportunity.

**Table 2 Summary of social characteristics for scoping**

Social Factor	Impact Area	Vulnerability	Opportunity
A higher median age in Narrandera LGA, suggesting an older population, most likely concentrated in the town of Narrandera.	Community, Health and wellbeing, Access	Yes	No
A significantly higher proportion of the population in Narrandera LGA who identify as Aboriginal and/or Torres Strait Islander (13.0%, NSW: 3.4%).	Community, Culture, Health and wellbeing	Yes	Yes
A low level of households that rent in the local study area (23.0%) and the LGA (24.0%, NSW: 32.5%). And conversely higher levels of home ownership in the LGA (70.0%, NSW: 64.0%).	Access	Yes	No
The most common household type in the local study area is couples with children (60.0%, 44.7%). The most common type in the LGA is lone person households (32.0%, NSW: 25.0%).	Health and wellbeing, Access	Yes	No
All levels of social locality demonstrate low levels of household mobility, and high levels of English proficiency, suggesting generally established and culturally homogenous communities.	Community	Yes	No
All levels of social locality have lower rates of university-level qualifications than the state average (29.0%), ranging from (21.0% in the local study area to 11.0% in the LGA). Conversely, trade qualifications are more prevalent across all levels and above the state average (Local: 25.0% to LGA 22.0%, NSW: 18.9%).	Livelihoods	No	Yes
There is a low level of labour force participation at the LGA level (54.1%), compared to the region (62.0%) and NSW (59.2%).	Livelihoods, Community, Access	No	Yes
Correspondingly, there is a high proportion of low-income households in the LGA (24.1%, NSW: 15.3%).	Livelihoods, Health and wellbeing	Yes	Yes
There is a high prevalence of people with long term health conditions in the LGA (36.1%).	Health and Wellbeing, Access	Yes	No
The rural local study area is at the 78th IRSAD percentile, indicating a high level of socio-economic advantage. The LGA is at the 15th percentile, suggesting broad social disadvantage. The disparity between the two suggests inequalities within the LGA.	Livelihoods, Community, Health and Wellbeing	Yes	Yes



## 4.0 Consultation

Stromlo Energy conducted various engagement activities from late 2023 to early 2024 with landowners/landholders, stakeholders, and community members to gather feedback and refine their project scope. Details of the consultation are provided in this section.

### 4.1 General community engagement

#### 4.1.1 Narrandera community open day

A community open day was hosted at the Narrandera Ex servicemen's Club on 14 December 2023 between 10 am and 6 pm.

The event was advertised through various channels, including an invitation mail-out to nearby residential addresses, newspaper ads, online articles by Renew Economy and The Daily Advertiser, a radio interview, and social media posts on Facebook and LinkedIn.

Topics raised during the open day include:

- Project planning, approvals and delivery
- Connection into the existing transmission network
- Neighbour benefits
- Ideas for the community benefits fund
- Regional labour force experience in the renewables sector.
- Accommodation shortages in the region
- Local Aboriginal engagement and participation.

All participants were offered a sign-on sheet or electronic sign-up to the Project newsletter to stay informed. Additionally, community feedback forms were available and completed by approximately 25% of attendees.

#### 4.1.2 Community Christmas Markets

A project information stall was set up at the Narrandera Lions Club December Christmas Market and Carols event on 17 December 2023. Stromlo Energy sponsored the event, which around 400-500 community members attended. The interactions with the community during the evening mainly revolved around providing general information about Stromlo, project planning, approvals, and delivery. However, there were a few discussions about the potential health and safety risks associated with electricity infrastructure and lightning strikes at wind farms. The Project team provided more detailed responses to these concerns.

#### 4.1.3 Yanco Weir RFS depot information session

On 17 December 2023, a community drop-in session was held at the Yanco Weir RFS Depot in Euroley from 11 am to 2 pm. The event was advertised to the Project landowners and the Euroley RFS mailout list. The main focus of the session was to provide an opportunity for residents living along Yanco Creek to engage with the Project. The attendees were a mix of existing Project Host landowners and near neighbours.

Topics discussed include:

- Project planning, approvals and delivery
- Connection into the existing transmission network



- Neighbour benefits
- Ideas for the community benefits fund
- Ecology survey program/schedule
- Potential impacts on dry lake and existing bird life.

#### 4.1.4 Leeton Farmers and Makers Market

A Project information stall was held at the Leeton Farmers and Makers Market on Saturday, 6 April 2024. The stall allowed attendees to find out information about the Project and speak to the Project team about any queries they had. Overall, the team spoke with 26 people during the event, including many different stakeholder groups, including local farmers, members of the Aboriginal community, local arts groups and community associations. There was generally positive sentiment towards the project and the project team, with people interested in the opportunities the project could bring to the region.

A community survey was also available for attendees to complete, and seven people provided responses. Key takeaways from the survey include:

- Respondents value regional agriculture, community and family connections, natural landscapes, and cultural heritage.
- Noted potential benefits for the region include economic opportunities through jobs, local community investment and diversification of landholder income.
- Primary areas of concern include effects on flora and fauna, as well as impacts on farmland and visual amenity.

## 4.2 Specific stakeholder groups

Table 3 details the consultation undertaken with key stakeholders such as Host and neighbouring landholders, Narrandera Shire Council and representatives of the local Aboriginal community.

**Table 3 Consultation by stakeholder group**

Group	Activities and Subjects Raised
Host and neighbouring landholders	<p>Between August and December 2023 Stromlo organised several wind farm tours to enable potential Host and neighbouring landholders within a 3 km radius of the Project site to visit operational wind farms. These tours aimed to provide participants with an opportunity to experience being near an active wind farm. The tours also included a meeting with the host landholder of the operational wind farm, where they discussed various matters related to wind farm operations. Matters discussed included:</p> <ul style="list-style-type: none"> <li>• The experience of living within a wind farm.</li> <li>• The experience of farming and co-hosting wind turbines.</li> <li>• Impact on property values (Charlie's farm is currently for sale).</li> <li>• Community response.</li> <li>• Noise.</li> <li>• Visual impacts.</li> </ul>
Council	<p>On 13 December 2023, a project briefing was presented to Narrandera Shire Council, including the Mayor, Councillors, and Council staff. The council session, which was streamed live,</p>



Group	Activities and Subjects Raised
	<p>covered the company structure, project size, schedule, and location.</p> <p>Matters raised during the discussion included:</p> <ul style="list-style-type: none"> <li>• Project contribution to the Council (via a Voluntary Planning Agreement).</li> <li>• Community benefits program and neighbour benefits program.</li> <li>• Primary access and use of public roads.</li> <li>• Number of landowners and lease provisions with hosts.</li> <li>• Existing land use.</li> <li>• Community engagement approach.</li> </ul> <p>The Council expressed support for the Project and shared communication about the Project community session via the Council's social media channels.</p>
Aboriginal consultation	<p>Stromlo had the opportunity to consult with several representatives of the local Aboriginal community at the community open day, including Elders, representatives of the Narrandera Local Aboriginal Land Council, and local community advocates. The conversation covered a range of topics including:</p> <ul style="list-style-type: none"> <li>• Lessons learned from other renewables developments in the regions.</li> <li>• Workforce and training opportunities.</li> <li>• Opportunities for community benefits initiatives.</li> <li>• Cultural heritage investigations.</li> <li>• Preferred ongoing consultation processes.</li> </ul> <p>As a result of the discussions, Stromlo has appointed a local Aboriginal Community Liaison from Narrandera to facilitate ongoing consultation processes and maximise potential opportunities for the community.</p> <p>In April 2024, eight members of the Stromlo Energy team attended cultural awareness training and a site tour of the local cultural sites near the project area. The training was held at the Yanco Agricultural College and conducted by Wiradjuri Elders, including Uncle James Ingram, Uncle Bruce Crowe, Jason Matthews, and Robert Pengelly.</p>
Rural Fire Service	<p>Stromlo hosted a tailored RFS information session at the Yanco Weir RFS depot in April 2024 to provide a detailed overview of the Devlins Bridge wind farm's water management approach, access protocols, fire management policies, and operations and maintenance practices. Stromlo also discussed the recent Buangor bushfire response, demonstrating the ability of aerial support to operate within wind farms.</p>

## 5.0 Scoping

Table 4 summarises the SIA scoping worksheet and shows the scoped social impacts for further investigation in the Project SIA Report. The summary of vulnerabilities and opportunities in Table 2, consultation feedback outlined in section 4.0, and a review of other wind farm and major energy infrastructure social impact assessments have informed the scoped impacts.



**Table 4 Scoped social impacts (Interpreted from the SIA scoping worksheet)**

Potential social impact	Project Phase	Social Impact Categories	Positive or Negative	Level of assessment for each social impact
The Project contributes to broader national decarbonisation efforts and aligns with policy directives across all levels of government.	Operation	Surroundings	Positive	Detailed assessment of the impact
Project activities and infrastructure result in visual changes and affect rural character and environmental values.	Construction and operation	Surroundings	Negative	Detailed assessment of the impact
Potential permanent impacts to land use and environmental values associated with decommissioning.	Decommission	Surroundings	Positive	Minor assessment of the impact
Amenity impacts associated with construction activities and haulage affect mental and physical health outcomes for proximal residents, including those along transport corridors.	Construction	Health and wellbeing	Negative	Detailed assessment of the impact
Increased community concerns about safety and health risks associated with energy infrastructure.	Operation	Health and wellbeing	Negative	Detailed assessment of the impact
Haulage and project related transport increases pressure on regional and local road networks and the risk of decreased road safety outcomes.	Construction	Health and wellbeing	Negative	Detailed assessment of the impact
Project expenditures and resourcing requirements benefit local employment, skill development, and local business viability.	Construction	Livelihoods	Positive	Detailed assessment of the impact
Landholder and neighbour payments result in economic benefits and income diversification for property owners.	Operation	Livelihoods	Positive	Detailed assessment of the impact
New energy infrastructure results in the devaluation of affected and surrounding landholdings.	Operation	Livelihoods	Negative	Detailed assessment of the impact
An influx of non-resident project workers results in changes in community dynamics and established norms.	Construction	Community	Negative	Detailed assessment of the impact



Potential social impact	Project Phase	Social Impact Categories	Positive or Negative	Level of assessment for each social impact
Increased competition for workers and resources affects local community cohesion.	Construction	Community	Negative	Detailed assessment of the impact
Implementation of a community benefits fund increases community resilience.	Construction and operation	Community	Positive	Detailed assessment of the impact
The flow of project benefits raises issues of distributional equity and the reach of benefits to marginalised and disconnected communities.	Construction and operation	Community	Negative	Detailed assessment of the impact
Proactive and early consultative processes supports broad community support and approval for the project.	Consultation and project planning	Decision-making systems	Positive	Detailed assessment of the impact
Early and inclusive involvement in project planning results in enhanced project outcomes for Aboriginal people.	Consultation and project planning	Decision-making systems	Positive	Detailed assessment of the impact
Changes to landscapes and land affect Aboriginal cultural heritage and connection to Country.	Construction and operation	Culture	Negative	Detailed assessment of the impact
Project-associated migration places additional strain on housing, affecting those vulnerable and exposed to already strained housing markets.	Construction	Access	Negative	Detailed assessment of the impact
Project-associated migration diverts short-term accommodation away from tourists and seasonal workers, impeding usual regional economic function.	Construction	Access	Negative	Detailed assessment of the impact
Project-associated migration places additional demands on and pressures to maintain access to services and facilities.	Construction	Access	Negative	Detailed assessment of the impact
Project contributions to regional social and physical infrastructure improves long term access to services and facilities.	Construction	Access	Positive	Detailed assessment of the impact



## 6.0 SIA Approach

Based on the data noted in this Social Impact Scoping Report, we propose a **detailed level of assessment** for the social impacts of this Project. This decision stems from the following key findings:

1. Potential for Significant Impacts: Our investigations have revealed a possibility of significant social impacts arising from the Project, including:
  - a. High levels of socio-economic disadvantage in potentially affected communities and the potential for uneven distribution of project benefits.
  - b. A large Aboriginal community who may experience higher levels of vulnerability to certain changes to the social environment.
  - c. A constrained accommodation market.
2. Addressing Cumulative Effects: To comprehensively understand the Project's overall social impact, we must consider potential cumulative effects with existing or planned projects in the area. This necessitates a detailed assessment to ensure proper management and mitigation of any cumulative impact.

Therefore, conducting a detailed level of assessment is crucial to thoroughly analyse the potential social consequences of this project, allowing for informed decision-making and effective mitigation strategies.

### 6.1 Consultation and research methods

Consultation for the SIA will complement broader EIS consultation designed in accordance with the Undertaking Engagement Guidelines for State Significant Projects guideline (New South Wales Department of Planning and Environment, 2022).

The following primary and secondary research methods and consultation activities will inform the detailed SIA report:

- 1 Primary SIA data will be collected through the following SIA activities:
  - a) Semi-structured stakeholder interviews with the following key groups who wish to participate:
    - i. Sensitive receivers within 3 km of the Project site, including host and neighbouring landowners.
    - ii. Community representatives, including the Narrandera Local Aboriginal Land Council, Narrandera Business Group, Narranderra Shire Council Corporate and Community Services directorate and other key community stakeholders.
    - iii. Local NSW Rural Fire Service, Health Service and other relevant service providers critical to local health and wellbeing.
  - b) Participation in general community information sessions during the preparation of the EIS.

Secondary SIA data will be collected through reviews and analysis of the following:

- Consultation findings from other engagement activities undertaken by Stromlo.
- Findings from engagement activities undertaken by specialists to inform EIS technical studies, such as the Agricultural Assessment and Aboriginal Cultural Heritage Assessment.



- Secondary sources of information, including relevant census and demographic data from the Australian Bureau of Statistics.
- Regional and local strategic plans, as well as SIA reports prepared for other projects in the local area.



## 7.0 References

Australian Bureau of Statistics (2022) 2021 Census of Population and Housing, General Community Profile: Euroley (SAL11468) [<https://www.abs.gov.au/census/find-census-data/community-profiles/2021/SAL11468>], accessed 02 February 2024.

Australian Bureau of Statistics (2022) 2021 Census of Population and Housing, General Community Profile: Griffith - Murrumbidgee (West) (11301) [<https://www.abs.gov.au/census/find-census-data/community-profiles/2021/11301>], accessed 02 February 2024.

Australian Bureau of Statistics (2022) 2021 Census of Population and Housing, General Community Profile: Narrandera (LGA15800) [<https://www.abs.gov.au/census/find-census-data/community-profiles/2021/LGA15800>], accessed 02 February 2024.

Social Impact Assessment Guideline for State Significant Projects (SIA Guideline) (New South Wales Department of Planning [Previously the Department of Planning and Environment], 2023).

Undertaking Engagement Guidelines for State Significant Projects guideline (New South Wales Department of Planning [Previously the Department of Planning and Environment], 2022).





# Appendix A    SIA scoping worksheet

## **Social Impact Scoping Report**

**Devlins Bridge Wind Farm**

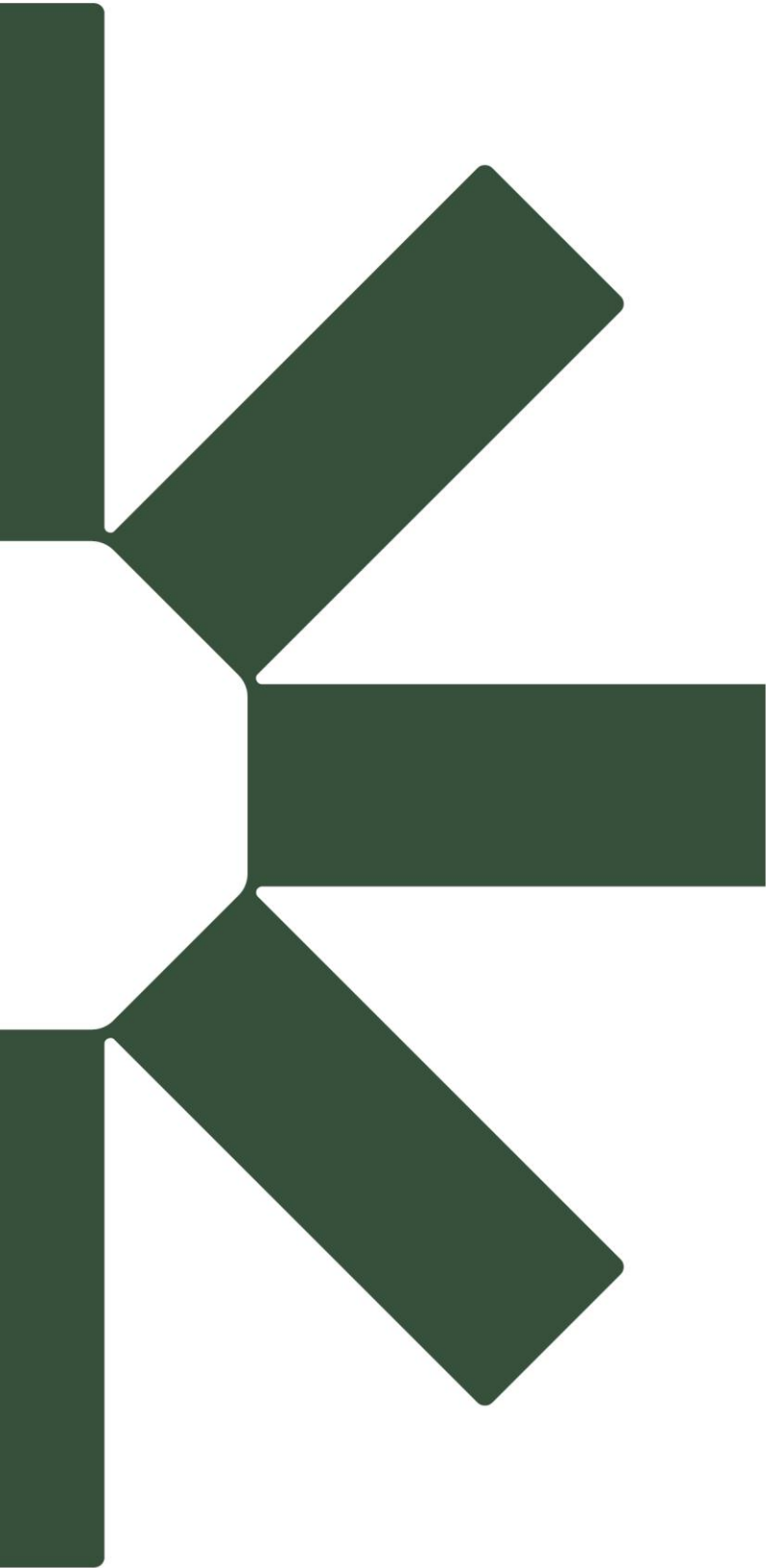
**Stromlo Energy**

SLR Project No.: 620.040612.00001

15 April 2024

Social Impact Assessment (SIA) Worksheet																
Project name: _____ Date: _____																
PROJECT ACTIVITIES	CATEGORIES OF SOCIAL IMPACTS	POTENTIAL IMPACTS ON PEOPLE	PREVIOUS INVESTIGATION OF IMPACT	CUMULATIVE IMPACTS	ELEMENTS OF IMPACTS - Based on preliminary investigation					ASSESSMENT LEVEL FOR EACH IMPACT						
Which project activity / activities could produce social impacts?	What social impact categories could be affected by the project activities?	What impacts are likely, and what concerns/aspirations have people expressed about the impact? Summarise how each relevant stakeholder group might experience the impact. NB. Where there are multiple stakeholder groups affected differently by an impact, or more than one impact from the activity, please add an additional row.	Has this impact previously been investigated (on this or other project(s))?	If "yes - this project," briefly describe the previous investigation. If "yes - other project," identify the other project and investigation.	Will this impact combine with others from this project (think about when and where), and/or with impacts from other projects (cumulative)?	If yes, identify which other impacts and/or projects.	Will the project activity (without mitigation or enhancement) cause a material social impact in terms of its: You can also consider the various magnitudes of these characteristics					Level of assessment for each social impact	What methods and data sources will be used to investigate this impact?			
		Is the impact expected to be positive or negative?					extent i.e. number of people potentially affected?	duration of expected impacts? (i.e. construction vs operational phase)	intensity of expected impacts i.e. scale or degree of change?	sensitivity or vulnerability of people potentially affected?	level of concern/interest of people potentially affected?		Secondary data	Primary Data - Consultation	Primary Data - Research	
Operation	surroundings	The project contributes to broader national decarbonisation efforts and aligns with policy directives across all levels of government.	Positive	Yes - other project	Yanco Delta Wind Farm Thunderbolt Wind Farm Energy Connect East	No	Not required	Yes	Yes	Yes	No	Unknown	Detailed assessment of the impact	Required	Broad consultation	Targeted research
Construction and operation	surroundings	Project activities and infrastructure result in visual changes and affect rural character and environmental values.	Negative	Yes - other project	Yanco Delta Wind Farm Thunderbolt Wind Farm Energy Connect East	Yes	Health and wellbeing, culture and livelihoods. The scale of change may also be exacerbated by other renewables developments at various stages of planning across the region.	No	Yes	Yes	No	Yes	Detailed assessment of the impact	Required	Broad consultation	Targeted research
Decommission	surroundings	Potential permanent impacts to land use and environmental values associated with decommissioning.	Positive	Yes - other project	Yanco Delta Wind Farm Thunderbolt Wind Farm	Yes	Livelihoods.	No	Yes	No	No	No	Minor assessment of the impact	Required	Limited - if required (e.g. local council)	Not required
Construction	health and wellbeing	Amenity impacts associated with construction activities and haulage affect mental and physical health outcomes for proximal residents, including those along transport corridors.	Negative	Yes - other project	Yanco Delta Wind Farm Thunderbolt Wind Farm Energy Connect East	Yes	Livelihoods, surroundings and community. The scale of change may also be exacerbated by other renewables developments at various stages of planning across the region.	Yes	Yes	Unknown	Unknown	Unknown	Detailed assessment of the impact	Required	Broad consultation	Targeted research
Operation	health and wellbeing	Increased community concerns about safety and health risks associated with energy infrastructure.	Negative	Yes - other project	Yanco Delta Wind Farm Thunderbolt Wind Farm Energy Connect East	Yes	Decision making systems and community. The level of concern may be exacerbated by other renewables developments at various stages of planning across the region.	No	Yes	No	Unknown	Unknown	Detailed assessment of the impact	Required	Broad consultation	Targeted research
Construction	health and wellbeing	Haulage and project related transport increases pressure on regional and local road networks and the risk of decreased road safety outcomes.	Negative	Yes - other project	Yanco Delta Wind Farm Thunderbolt Wind Farm Energy Connect East	Yes	The scale of change may also be exacerbated by other renewables developments, projects and agricultural output across the region.	Yes	No	Yes	Unknown	Unknown	Detailed assessment of the impact	Required	Broad consultation	Targeted research
Construction	livelihoods	Project expenditures and resourcing requirements benefit local employment, skill development, and local business viability.	Positive	Yes - other project	Yanco Delta Wind Farm Thunderbolt Wind Farm Energy Connect East	Yes	Community.	Yes	Yes	Yes	Unknown	Yes	Detailed assessment of the impact	Required	Broad consultation	Targeted research
Operation	livelihoods	Landholder and neighbour payments result in economic benefits and income diversification for property owners.	Positive	Yes - other project	Yanco Delta Wind Farm Thunderbolt Wind Farm Energy Connect East	Yes	Health and wellbeing.	No	Yes	Yes	No	Yes	Detailed assessment of the impact	Required	Broad consultation	Targeted research
Operation	livelihoods	New energy infrastructure results in the devaluation of affected and surrounding landholdings.	Negative	Yes - other project	Yanco Delta Wind Farm Thunderbolt Wind Farm Energy Connect East	Yes	Surroundings, health and wellbeing.	No	Yes	Unknown	Unknown	Yes	Detailed assessment of the impact	Required	Broad consultation	Targeted research
Construction	community	An influx of non-resident project workers results in changes in community dynamics and established norms.	Negative	Yes - other project	Yanco Delta Wind Farm Thunderbolt Wind Farm Energy Connect East	Yes	Access. Livelihoods and decision making systems. The scale of change may be affected by the level of activity in the surrounding region associated with agricultural output and other projects.	Yes	No	Unknown	Unknown	Unknown	Detailed assessment of the impact	Required	Broad consultation	Targeted research
Construction	community	Increased competition for workers and resources affects local community cohesion.	Negative	Yes - other project	Yanco Delta Wind Farm Thunderbolt Wind Farm Energy Connect East	Yes	Access. Livelihoods and decision making systems. The scale of change may be affected by the level of activity in the surrounding region associated with agricultural output and other projects.	Yes	No	Unknown	Unknown	Unknown	Detailed assessment of the impact	Required	Broad consultation	Targeted research
Construction and operation	community	Implementation of a community benefits fund increases community resilience.	Positive	Yes - other project	Yanco Delta Wind Farm Thunderbolt Wind Farm Energy Connect East	Yes	Access	Yes	Yes	Unknown	Yes	Yes	Detailed assessment of the impact	Required	Broad consultation	Targeted research
Construction and operation	community	The flow of project benefits raises issues of distributional equity and the reach of benefits to marginalised and disconnected communities.	Negative	Yes - other project	Yanco Delta Wind Farm Thunderbolt Wind Farm Energy Connect East	Yes	Decision making systems.	Unknown	Yes	No	Yes	Yes	Detailed assessment of the impact	Required	Broad consultation	Targeted research
Consultation and project	decision-making systems	Proactive and early consultative processes supports broad community support and approval for the project.	Positive	Yes - other project	Yanco Delta Wind Farm Thunderbolt Wind Farm Energy Connect East	Yes	The level of consultation occurring as part of other projects in the region.	Yes	No	No	Yes	Yes	Detailed assessment of the impact	Required	Broad consultation	Targeted research
Consultation and project	decision-making systems	Early and inclusive involvement in project planning results in enhanced project outcomes for Aboriginal people	Positive	Yes - other project	Yanco Delta Wind Farm Thunderbolt Wind Farm Energy Connect East	Yes	The level of consultation occurring as part of other projects in the region.	Yes	No	No	Yes	Yes	Detailed assessment of the impact	Required	Broad consultation	Targeted research

PROJECT ACTIVITIES	CATEGORIES OF SOCIAL IMPACTS	POTENTIAL IMPACTS ON PEOPLE		PREVIOUS INVESTIGATION OF IMPACT	CUMULATIVE IMPACTS	ELEMENTS OF IMPACTS - Based on preliminary investigation	ASSESSMENT LEVEL FOR EACH IMPACT										
		What impacts are likely, and what concerns/aspirations have people expressed about the impact? Summarise how each relevant stakeholder group might experience the impact. NB. Where there are multiple stakeholder groups affected differently by an impact, or more than one impact from the activity, please add an additional row.	Is the impact expected to be positive or negative					Has this impact previously been investigated (on this or other project/s)?	If "yes - this project," briefly describe the previous investigation. If "yes - other project," identify the other project and investigation	Will this impact combine with others from this project (think about when and where), and/or with impacts from other projects (cumulative)?	If yes, identify which other impacts and/or projects	Will the project activity (without mitigation or enhancement) cause a material social impact in terms of its: You can also consider the various magnitudes of these characteristics	Level of assessment for each social impact	What methods and data sources will be used to investigate this impact?			
								extent i.e. number of people potentially affected?	duration of expected impacts? (i.e. construction vs operational phase)	intensity of expected impacts i.e. scale or degree of change?	sensitivity or vulnerability of people potentially affected?	level of concern/interest of people potentially affected?			Secondary data	Primary Data - Consultation	Primary Data - Research
Construction and operation	culture	Changes to landscapes and land affect Aboriginal cultural heritage and connection to Country.	Negative	Yes - other project	Yanco Delta Wind Farm Thunderbolt Wind Farm Energy Connect East	Yes	Surroundings, decision making systems.	Unknown	Yes	Unknown	Yes	Yes	Detailed assessment of the impact	Required	Broad consultation	Targeted research	
Construction	access	Project-associated migration places additional strain on housing, affecting those vulnerable and exposed to already strained housing markets.	Negative	Yes - other project	Yanco Delta Wind Farm Thunderbolt Wind Farm Energy Connect East	Yes	Community and the scale of agricultural output and other projects occurring in the region	Yes	No	Unknown	Yes	Yes	Detailed assessment of the impact	Required	Broad consultation	Targeted research	
Construction	access	Project-associated migration diverts short-term accommodation away from tourists and seasonal workers, impeding usual regional economic function.	Negative	Yes - other project	Yanco Delta Wind Farm Thunderbolt Wind Farm Energy Connect East	Yes	Community and the scale of agricultural output and other projects occurring in the region	Unknown	No	Unknown	Unknown	Yes	Detailed assessment of the impact	Required	Broad consultation	Targeted research	
Construction	access	Project-associated migration places additional demands on and pressures to maintain access to services and facilities.	Negative	Yes - other project	Yanco Delta Wind Farm Thunderbolt Wind Farm Energy Connect East	Yes	Community and the scale of agricultural output and other projects occurring in the region	Yes	No	Unknown	Unknown	No	Detailed assessment of the impact	Required	Broad consultation	Targeted research	
Construction	access	Project contributions to regional social and physical infrastructure improves long term access to services and facilities.	Positive	Yes - other project	Yanco Delta Wind Farm Thunderbolt Wind Farm Energy Connect East	Unknown		Yes	Yes	Yes	Unknown	Yes	Detailed assessment of the impact	Required	Broad consultation	Targeted research	



Making Sustainability Happen