

[Date]

Dear Resident,

Re: Proposed Calala Battery Energy Storage System (BESS)

I am writing on behalf of Equis to inform you about a Battery Energy Storage System (BESS) that Equis is planning to build in the southeast corner of 57 Burgess Lane, Calala, approximately 1.2km northeast of the Tamworth substation and 5.8km southeast of the Tamworth CBD.

Equis is one of Asia Pacific's leading infrastructure developers and is actively pursuing renewables development and investment across the Asia-Pacific region. To date, Equis has successfully developed over 11GW of renewable energy and over 220 renewable energy projects around the world.

Equis has offices in Victoria, New South Wales and Tasmania and our team has extensive experience developing renewable energy assets across the country.

The Calala BESS will have a storage capacity of up to 300MW and a discharge capacity of up to 1,200MWh, which is enough power to supply electricity to up to 80,000 homes for four hours. The BESS will connect to the NSW electricity grid via a transmission line running to the Tamworth substation on Burgmanns Lane.

We have completed preliminary investigations of the site and have engaged independent experts to conduct detailed environmental assessments.

We intend to lodge a planning application to the Department of Planning and Environment in the coming weeks. After lodgment, the project will go through the formal planning process which will include public advertisement and consultation.

We value your feedback and welcome any questions that you have about the BESS. You can contact Domenica Jensen by phone on 0439 917 804 during working hours or by email at AUpjects@equis.com at any time.

Attached to this letter is a list of FAQ's, including a map on page 7 which shows the indicative location of the BESS. We encourage you to also visit the BESS website at <https://www.equis.com.au/calala> for more information.

Yours Sincerely,

Domenica Jensen
Community Engagement Manager

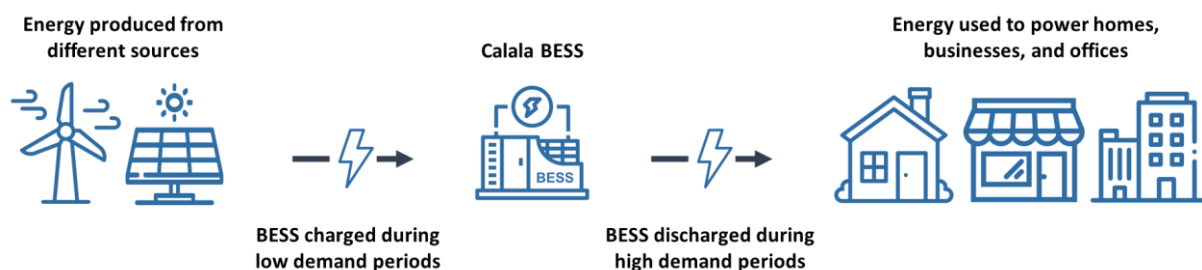
Frequently Asked Questions:

Q1: What is Battery Energy Storage System and why is it needed?

A1: Battery Energy Storage System (BESS) is a technology that enables power system operators and utilities to store energy for later use. Australia is currently undergoing a rapid transition to renewable energy and BESS's ability to store energy from renewable sources will support this transition by improving the reliability of Australia's electricity grid.

BESS improves grid reliability by storing energy when there is an oversupply and making it available for discharge when demand is higher. This is particularly important as Australia moves away from coal fired power, as the level of energy supply from renewable energy is subject to greater fluctuations given its reliance upon external factors such as sunlight and wind. The ability for BESS to supply additional stored energy during periods of high demand helps to lower electricity prices for all Australians.

BESS can also help save billions of dollars on building new transmission lines, as the ability to store energy will reduce the need to transport energy across the country.



Q2: What storage capacity will the battery have and how will it be charged?

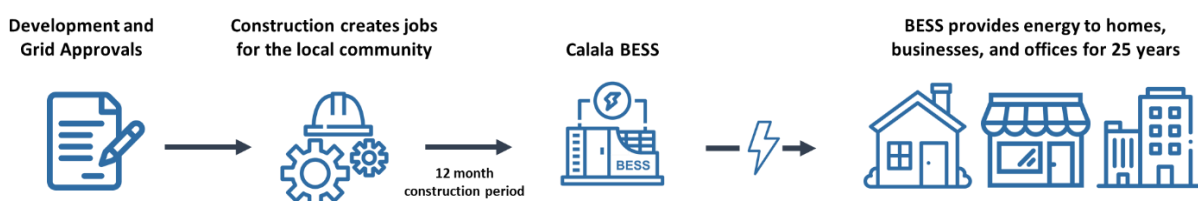
A2: The battery will have up to 1,200 MWh of stored energy, which is enough to supply electricity to more than 80,000 households for up to four hours each day. The BESS will be connected directly to the electricity grid and be charged by all forms of energy available in the market, including renewables.

Q3: Why is the BESS system being proposed in this area?

A3: The site was selected following an extensive study of locations across New South Wales to ensure it met a range of technical, community, heritage, fire, noise, traffic, visual impact, and environmental requirements. The site is roughly 1.2km from the Tamworth substation on Burgmanns Lane allowing the BESS to connect to the electricity grid at a strong part of the network, reducing the risk of electricity grid instability for New South Wales and the Tamworth region.

Q4: How long will the BESS take to complete and how long will it be there?

A4: The construction start date of the BESS is dependent on a variety of factors, including selecting a preferred battery supplier and securing planning and grid connection approvals. After these milestones are achieved, construction is expected to take approximately 12 months. We expect the BESS to be fully constructed and operational by late 2024. The BESS will have the capacity to be operational for up to 25 years.



**Equis Energy (Australia) Projects (Ngumi 4) Pty Ltd
as trustee for the Equis Energy (Australia) Ngumi 4 Asset Trust**

Australian Company Number: ACN 657 590 175
Ground Floor, 36 Esplanade, Brighton, 3186, VIC, Australia

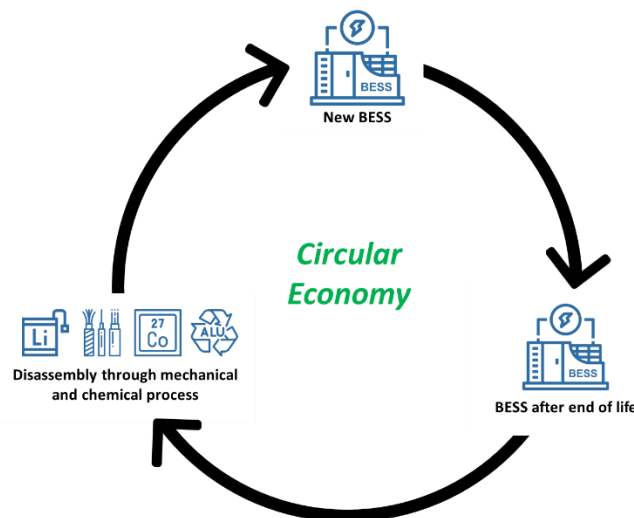
www.equis.com.au

Q5: How will the BESS be managed at the end of life?

A5: According to the CSIRO, 95 per cent of materials can be repurposed for use in new batteries or in other high value industries.

Equis is committed to sustainable end of life management and will work with leading industry experts to recycle the Calala BESS at the end of its life with the aim of creating a circular economy and offering continued support for local jobs.

According to Vaulta, diversified battery industries are set to become major contributors to Australia’s economy, contributing up to \$7.4 billion annually to Australia’s economy supporting 34,700 jobs by 2030.



Q6: What will the impact to local roads be?

A6: A traffic impact assessment will be completed for the Calala BESS to assess the impacts of the Project on the local road network and its users. A Traffic Management Plan (TMP) will be developed in consultation with Transport for NSW and the Tamworth Regional Council to ensure that construction traffic is appropriately managed to minimise any impact on local roads and residents during construction and operation.

Q7: What effects will the BESS have on the environment?

A7: The development of the Calala BESS is intended to positively benefit the environment by supporting the transition to renewable energy through improved grid reliability.

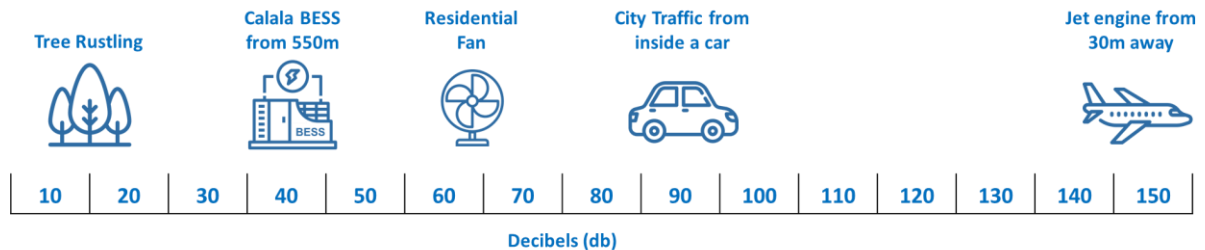
Preliminary environmental assessments have been undertaken by technical specialists and the location of the BESS has been selected to minimise any environmental and social impact, as well as any impacts on cultural heritage. As part of the planning process, Equis is required to undertake biodiversity surveys and prepare environmental reports required by State and Federal government departments, and this process is currently underway.

Results of the preliminary ecological assessment suggest no nationally threatened species would be significantly impacted by the Project. However, a further comprehensive Biodiversity Assessment will be prepared by an accredited ecologist to ensure compliance with state legislation.

Q8: Does the BESS generate noise?

A8: It is likely that system components will have noise emissions at times of charging and discharging. The main source of the sound is the cooling fans required to regulate the operating temperature of the individual battery cells. The sound they make is similar to an air conditioning unit. The BESS will have noise levels below the required limits.

To put it into context:



Extensive noise modelling will be completed as part of the development process by third party experts. This includes assessing potential impacts on nearest neighbours.

Construction and operational noise levels at neighbour dwellings will comply with the relevant Environment Protection Authority’s (EPA) noise standard via the implementation of suitable mitigation measures such as equipment silencers, noise walls or barriers, if needed.

Q9: Will there be any flooding impacts to waterways resulting from the BESS?

A9: There are no known significant flooding risks arising from the proposed facility. Nonetheless, a Drainage Management Plan will be prepared for the BESS and will consider whether mitigation measures are necessary to address any potential impacts onto the function of floodplains and waterways, particularly with respect to the protection of life, property, infrastructure, and environmental health.

Q10: Are BESS a fire risk?

A10: Although very unlikely, BESS can malfunction just like any other technology and cause a fire. However, all BESS must comply with the relevant guidelines, standards and conditions of any issued approval and operate in accordance with the applicable legislations. This includes fulfilling Fire and Rescue New South Wales guidelines, NSW Rural Fire Service, and Tamworth Regional Council requirements. A Risk Management Plan that identifies, assesses, and outlines controls for the management of on-site and off-site risks at the BESS will be developed in conjunction with the relevant fire authorities.

BESS facilities are equipped with a Supervisory Control and Data Acquisition (SCADA) and Battery Management Systems (BMS). These two systems jointly monitor the operational and fault status of the system to ensure seamless and safe operation of the BESS, including State of Charge (SOC), voltage, current, power limits, pressures, smoke and temperatures. The SCADA operates to mitigate the risk of fire by shutting down battery modules / racks if monitored conditions are outside of those permissible for safe operation.

Q11: How will you deal with any emergencies?

A11: A comprehensive Emergency Management Plan will be prepared in consultation with the NSW Rural Fire Service and the Tamworth Regional Council, to assess the risks of a potential emergency situation, and to describe roles, responsibilities and procedures when dealing with any onsite emergencies.

Q12: Will the BESS leak chemicals?

A12: Although unlikely, chemical hazards from BESS facilities can arise from acid or corrosive components leaking from a BESS. To mitigate against this risk, appropriate containment measures will be installed and a Hazard Assessment and Emergency Management Plan will be implemented.

Q13: What are the health impacts of BESS?

A13: According to independent experts, there are no known direct health impacts associated with batteries.

Q15: What economic benefits can a BESS create for our local community?

A15: Equis is committed to supporting the local economy as much as possible. The BESS will help benefit the local economy through buying locally, social procurement supporting local businesses, creating jobs during and post construction, direct payments to landowners, training and education for local youth, and funding of community programs as determined by the community.

Q16: Is there work for local people and businesses?

A16: We are committed to employing local people and buying local wherever possible. We look forward to building working relationships with the local area and local industries. You may register your services / business on our suppliers & services online submission form at <https://equis.engagementhub.com.au>. Workers and businesses will be employed and engaged by our delivery partners and contractors (and their sub-contractors).

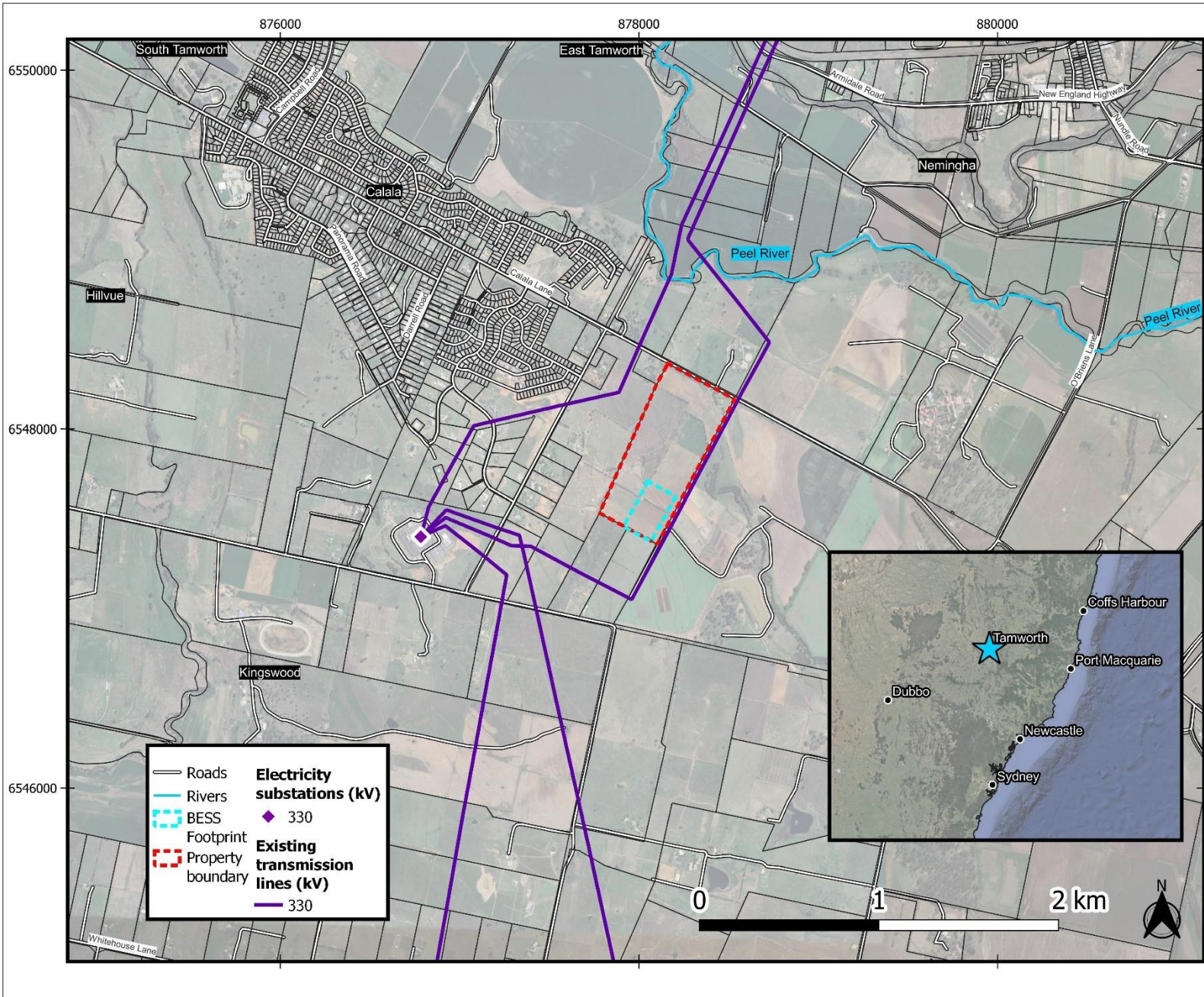
Q17: What kind of jobs do BESS create during construction?

A17: The BESS will directly and indirectly create jobs during construction. It will directly create jobs required on site for construction such as general labourers, BESS installers, high voltage operators, site managers, electricians, concrete suppliers, and landscapers. Indirectly, the increase number of workers will boost the local economy by driving business to accommodation providers, local pubs, restaurants, and food service providers.

Q18: How will you keep us informed about the BESS?

A18: To keep you informed and engaged we will use a range of tools such as:

- Equis Australia website - <https://www.equis.com.au>
- BESS Website – <https://www.equis.com.au/calala>
- Engagement Hub – our online engagement platform at <https://equis.engagementhub.com.au>
- Fact sheets – to be mailed out and found online at our website
- Meetings, phone calls, emails and/or letters to those directly affected
- Newsletters with updates during every stage of the BESS from planning to construction
- In-person information sessions (to be arranged)
- Meetings with relevant Council, government agencies and community group



Equis Australia Management Pte. Ltd
 Level 1
 30 Esplanade, English, VIC 3185
 Australia

Item No	Revision	Date
1	1	12.08.2022

Title
 Tamworth BESS

Subject
 Tamworth Regional & Local Context Plan
 Land - Lot 17 on DP629969

Project Code	
EQ-170	
Designed by	Checked by
AF	EZ
Seal	
Revision	Sheet
1	A3
Scale	

A-100

This drawing and design contains highly confidential and proprietary information that are of independent economic value to Equis. This drawing and design shall not be reproduced, amended, disclosed or distributed to others without the express written consent of Equis.