



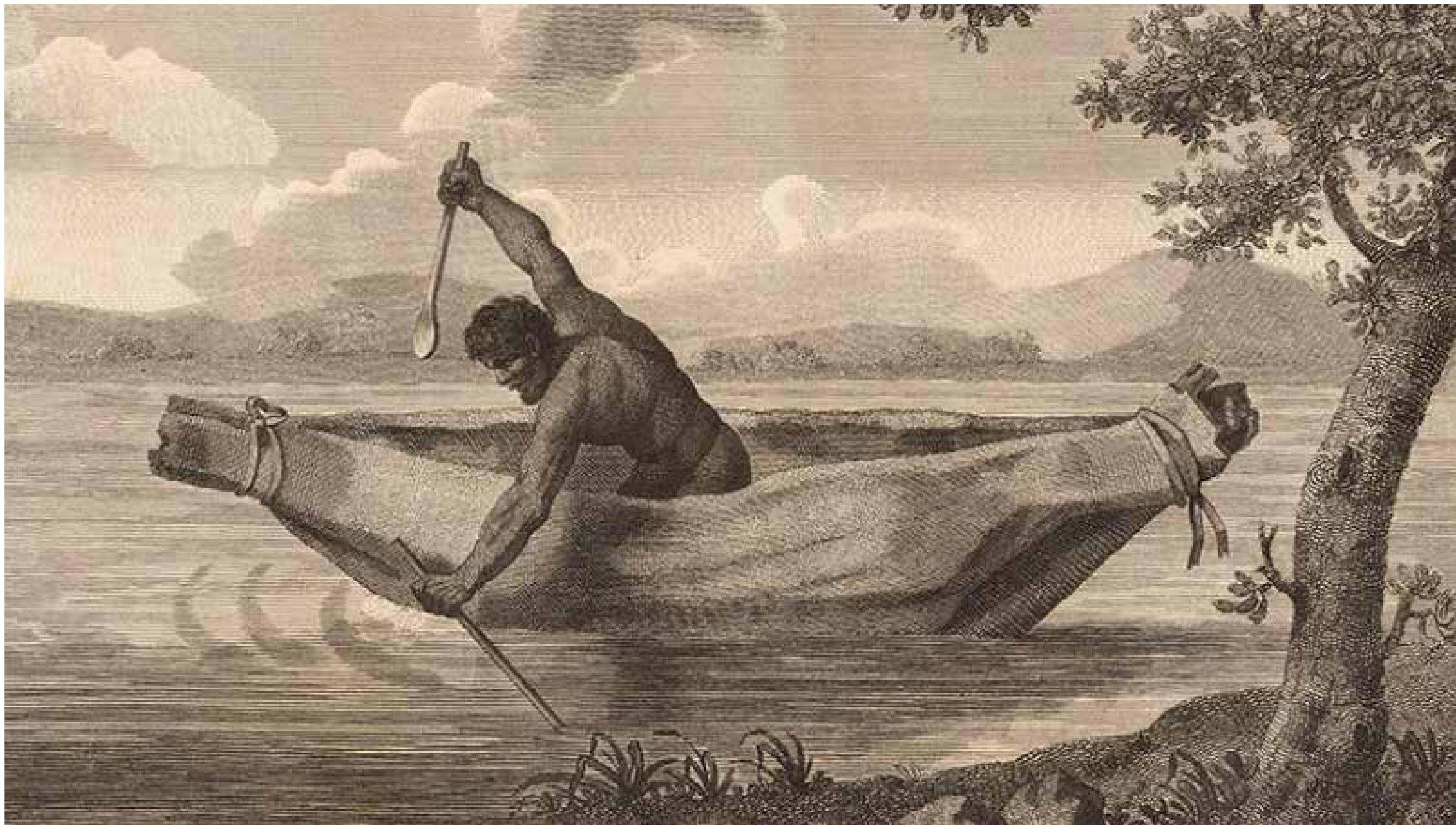
View of Elizabeth Farm, Hambledon Cottage, & Experiment Farm Cottage  
 Image source Sydney Living Museum



Bush Tucher



Large canopy trees

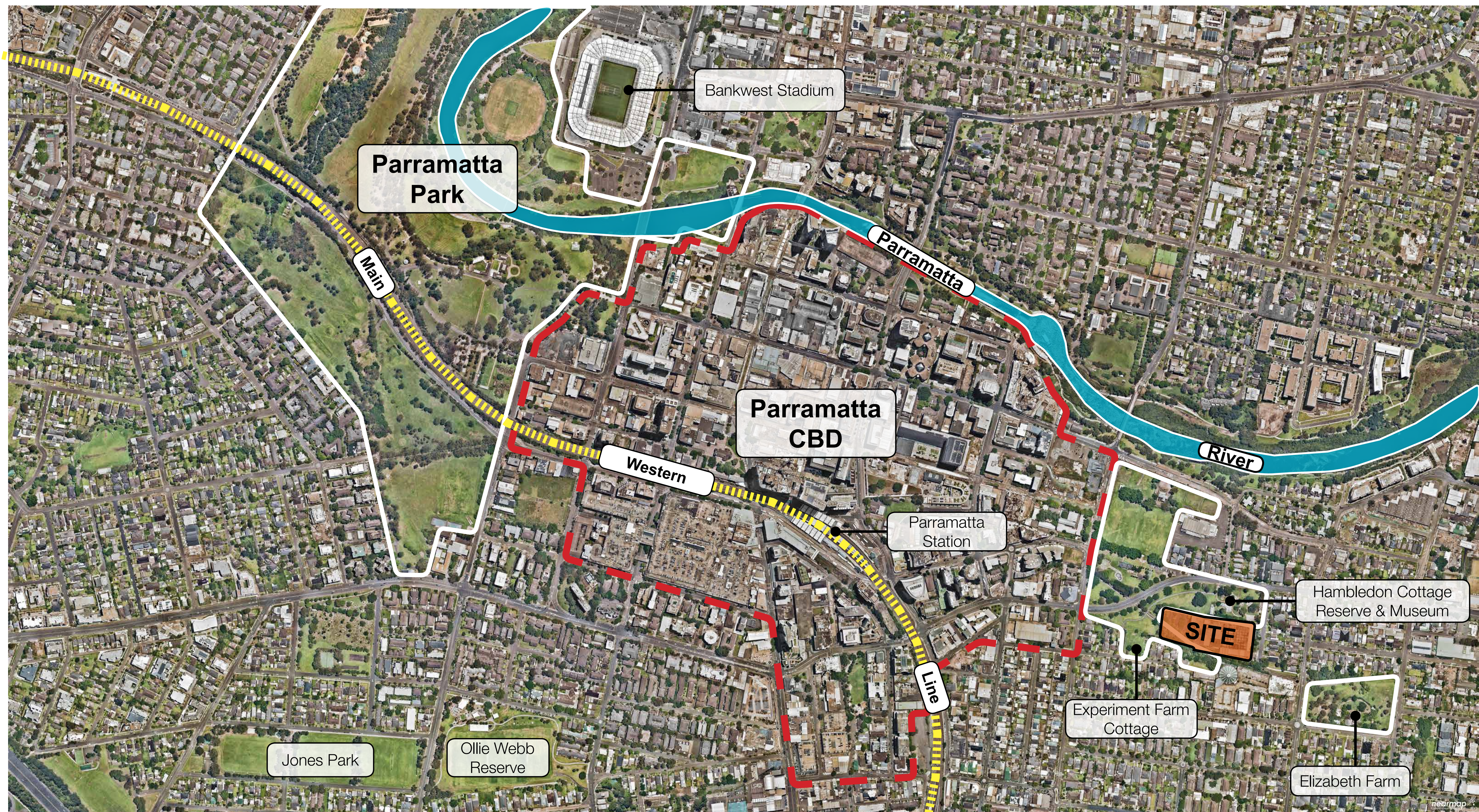


Pemulwuy, leader of the Aboriginal resistance  
 Image source National Museum of Australia

# 2a Gregory Place, Harris Park

Landscape Architecture Package - Request for SEARS Issue





Source Nearmap 29.07.2021

# Urban Context



14<sup>th</sup> September 2021





Source Nearthmap 29.07.2021

# Existing Site





Looking south to Elizabeth Farm. Hambledon Cottage is located to the right  
Image source Sydney Living Museum



Hambledon Cottage looking east showing visual curtilage.  
Note the existing mature marker trees.  
Photograph Author July 2021



Significant tree planting to Hambledon Cottage frontage.  
Photograph Author July 2021



View of heritage curtilage to Hambledon Cottage from Hassall Street.  
Note the existing built form of the subject site.  
Photograph Author July 2021

# Hambledon Cottage





Looking south to Elizabeth Farm. Experiment Farm Cottage is located to the far right.  
Image source Sydney Living Museum



Experiment Farm Cottage from Parkes Street showing pastoral context.  
Note the density of vegetation and overall park character.  
Photograph Author July 2021



Experiment Farm Cottage showing relationship to Parramatta CBD.  
Source Google Maps Street View 30.07.2021



Experiment Farm Cottage from Ruse Street looking north showing extended relationship to Parramatta CBD.  
Source Google Maps Street View 30.07.2021

# Experiment Farm Cottage





Looking south to Elizabeth Farm.  
Image source Sydney Living Museum



Elizabeth Farm showing immediate garden curtilage.  
Source Musings from the Mountains 30.07.2021



Elizabeth Farm from Alfred street showing density of vegetation and pastoral quality.  
Note the house is not seen form the street.  
Source Google Maps Street View 30.07.2021



Elizabeth Farm from Alfred street showing density of vegetation and pastoral quality.  
Note the house is not seen form the street.  
Source Google Maps Street View 30.07.2021

# Elizabeth Farm

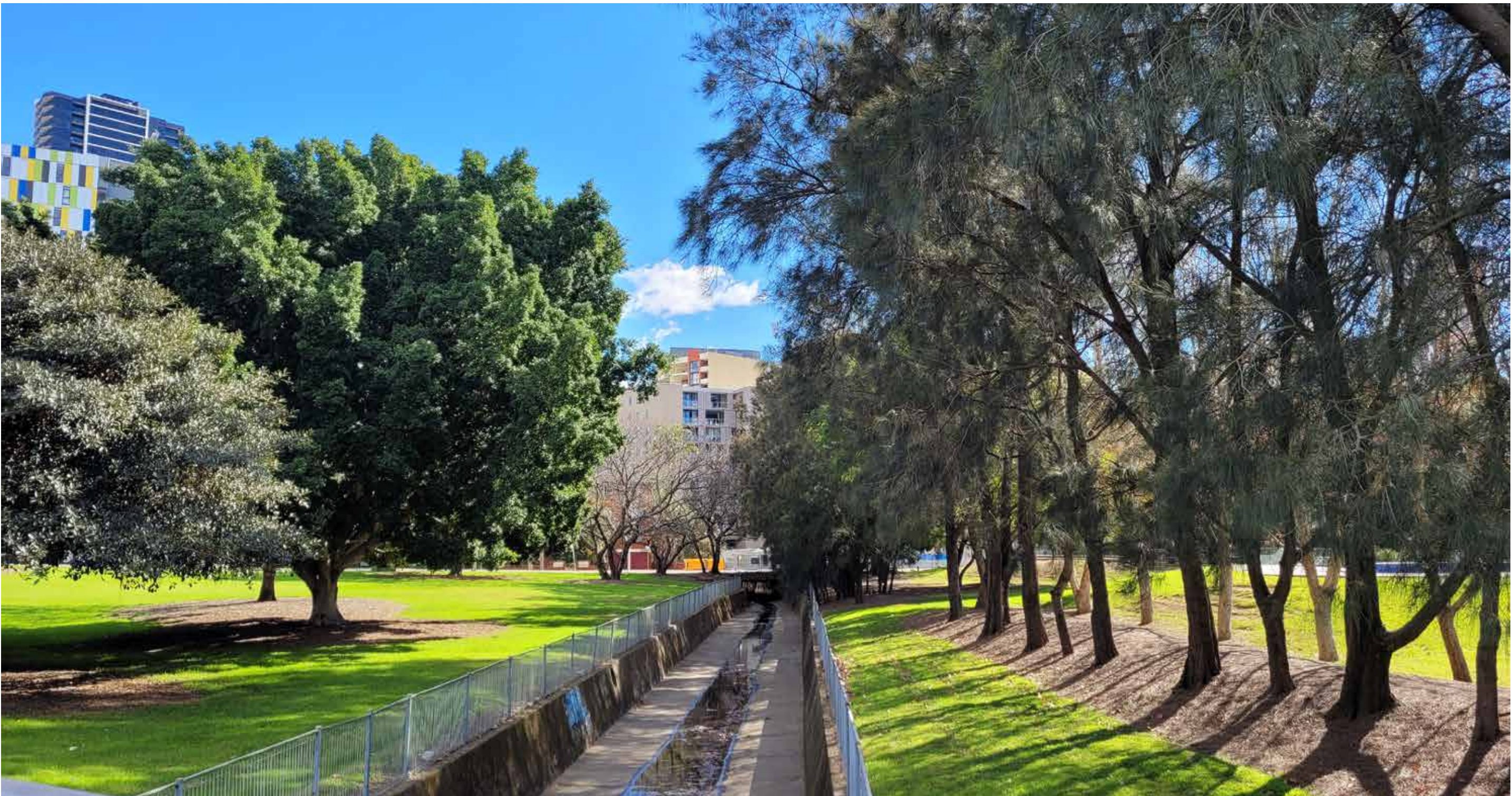




View of Hambledon Cottage and curtilage with Parramatta CBD to the west.  
Photograph Author July 2021



View of subject site showing density of existing vegetation & stables of Hambledon Cottage to the left hand side of photograph.  
Photograph Author July 2021



View of Landscape from Clay Cliff Creek looking west to Parramatta CBD. Note density of vegetation.  
Photograph Author July 2021



View of Landscape and Parramatta CBD from Parkes Street looking west. Note the form and character of the established vegetation to James Ruse Reserve.  
Photograph Author July 2021

# Site Characteristics





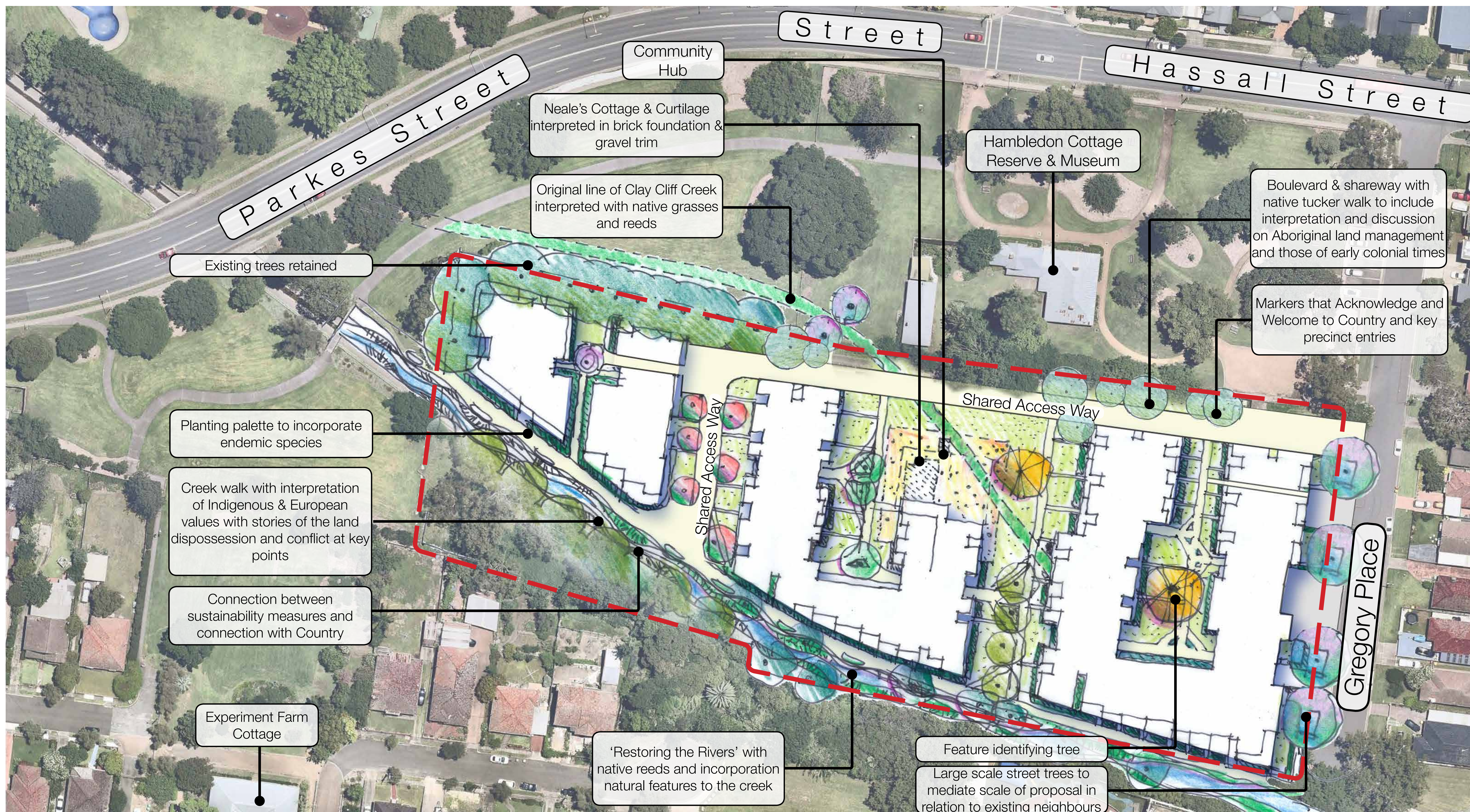
Source Nearthmap 29.07.2021

# Contextual Relationship



14<sup>th</sup> September 2021





Source Nearmap 29.07.2021

**Landscape plan incorporates principles from The Fulcrum Agency**

# Landscape Plan - Level 1



14<sup>th</sup> September 2021

**2a Gregory Place, Harris Park**

Taylor Brammer Landscape Architects Pty Ltd





Ground floor residential landscape character



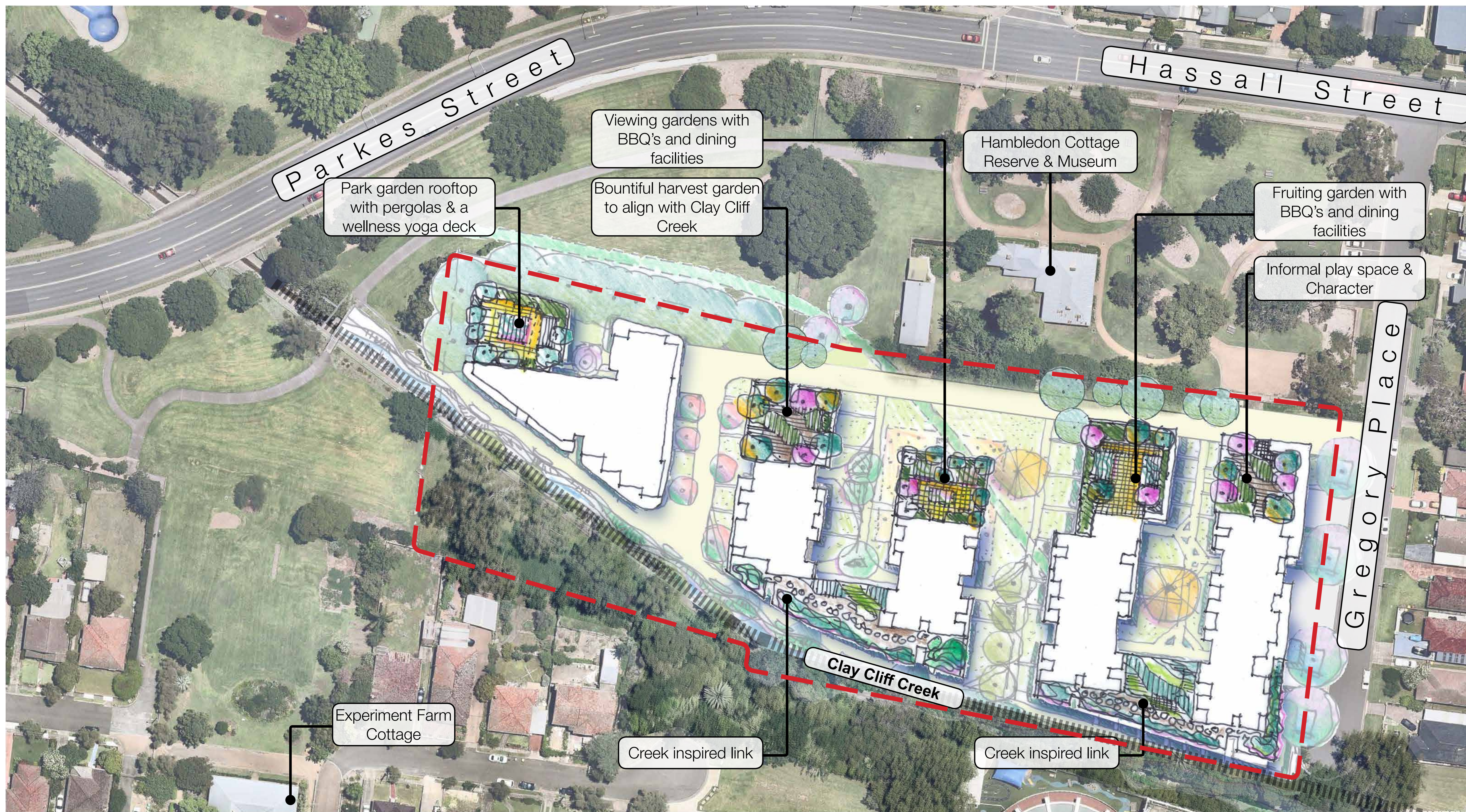
Large street tree character to Gregory Place



Bush tucker walk to shady boulevard

# Landscape Character - Level 1





Source Nearmap 29.07.2021

## Landscape Plan - Roof Terraces



14<sup>th</sup> September 2021

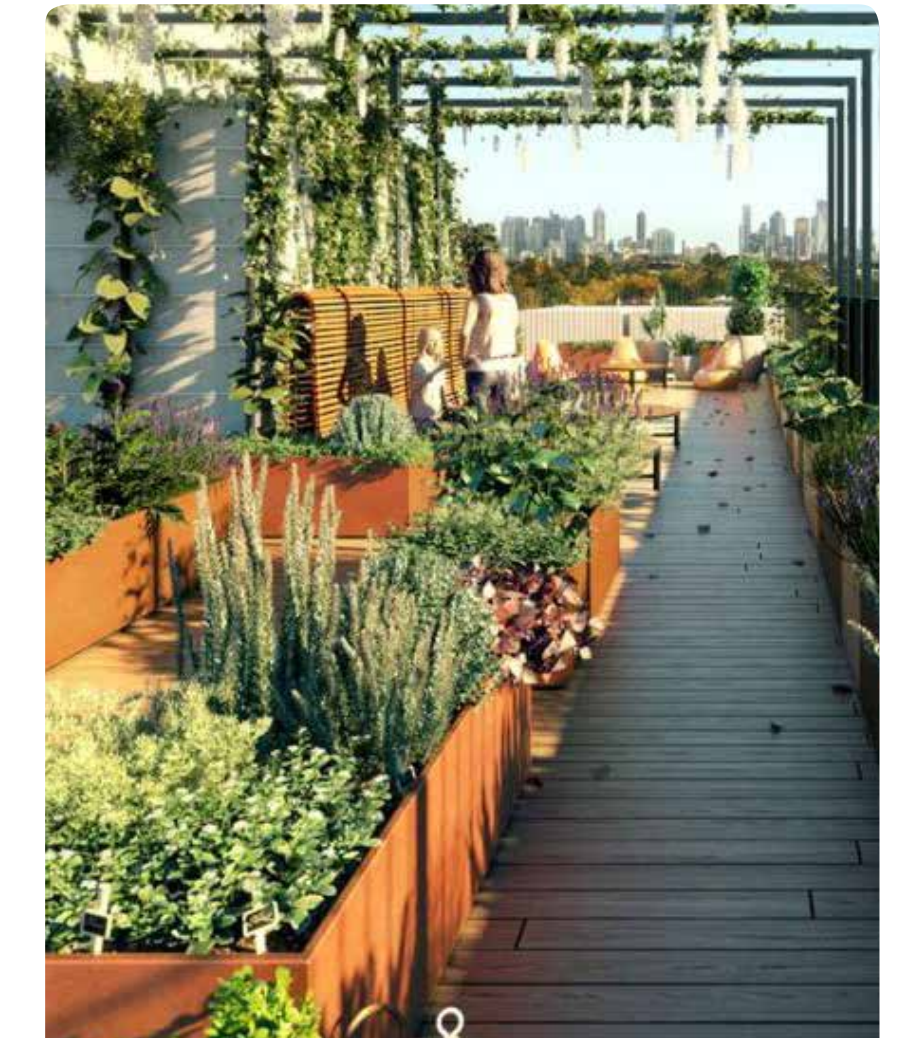
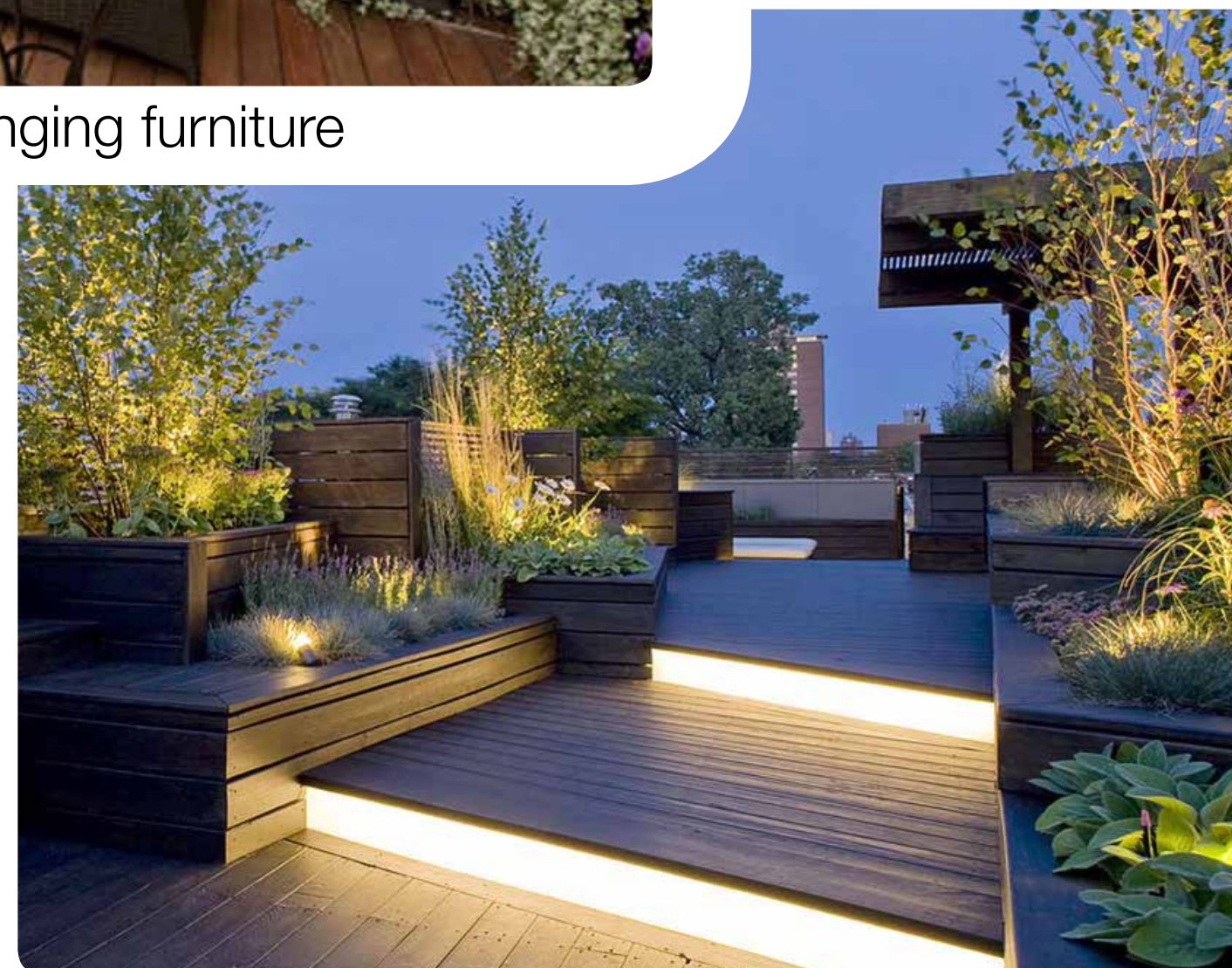




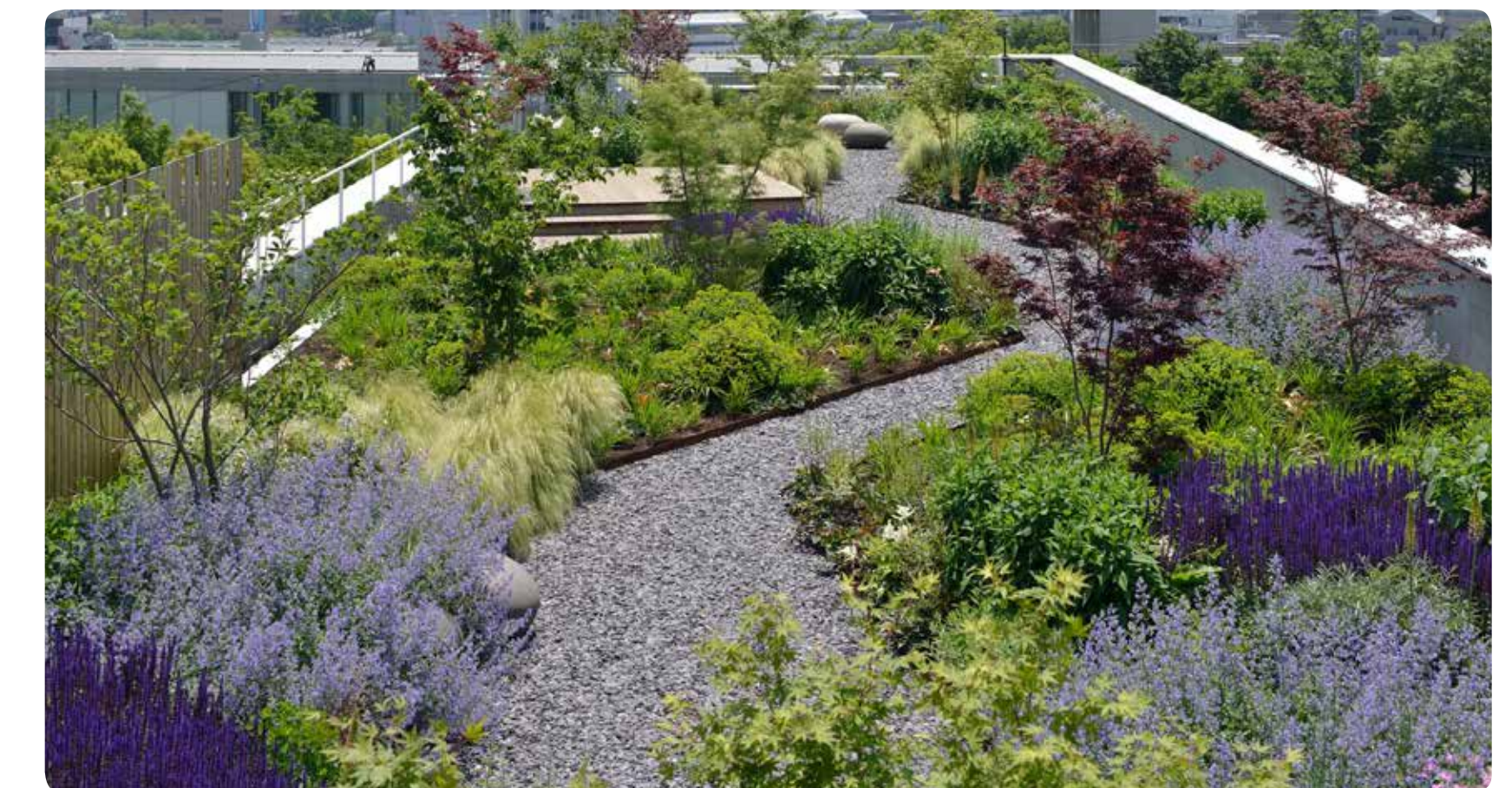
Rooftop garden with pergola and lounging furniture



Wellness yoga deck and sensory garden to rooftop



Rooftop fruiting garden and dining facilities



Rooftop garden with feature pebble finish inspired by Clay Cliff Creek

# Landscape Character - Rooftop Terraces





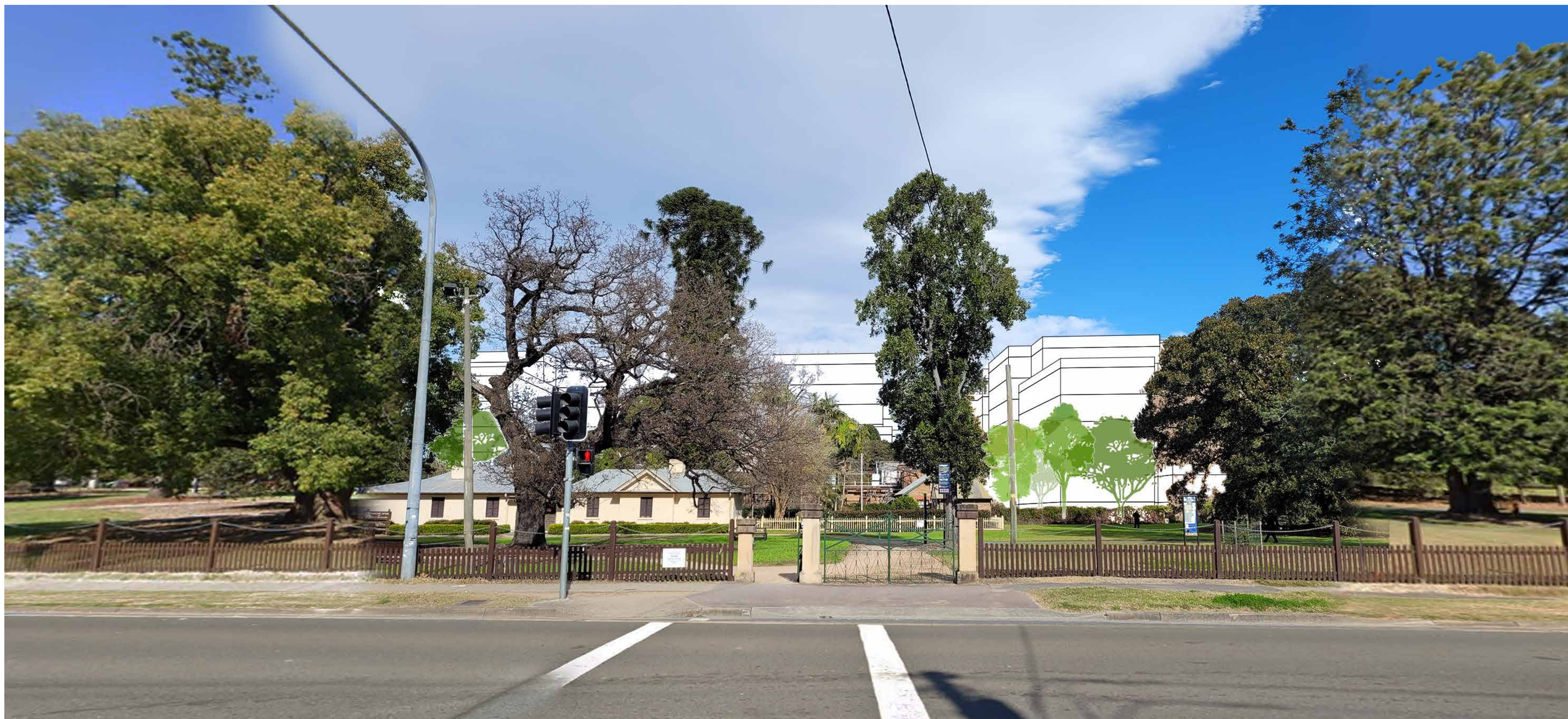


## View of site from Experiment Farm Reserve



14<sup>th</sup> September 2021





## View of site from Hassall Street



14<sup>th</sup> September 2021





## View of site from corner of Hassall Street & Gregory Place



14<sup>th</sup> September 2021





## View of site from Parkes Street



14<sup>th</sup> September 2021