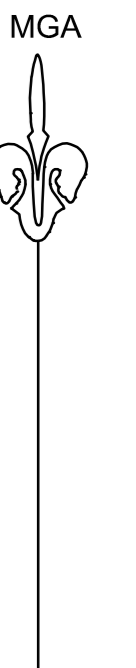
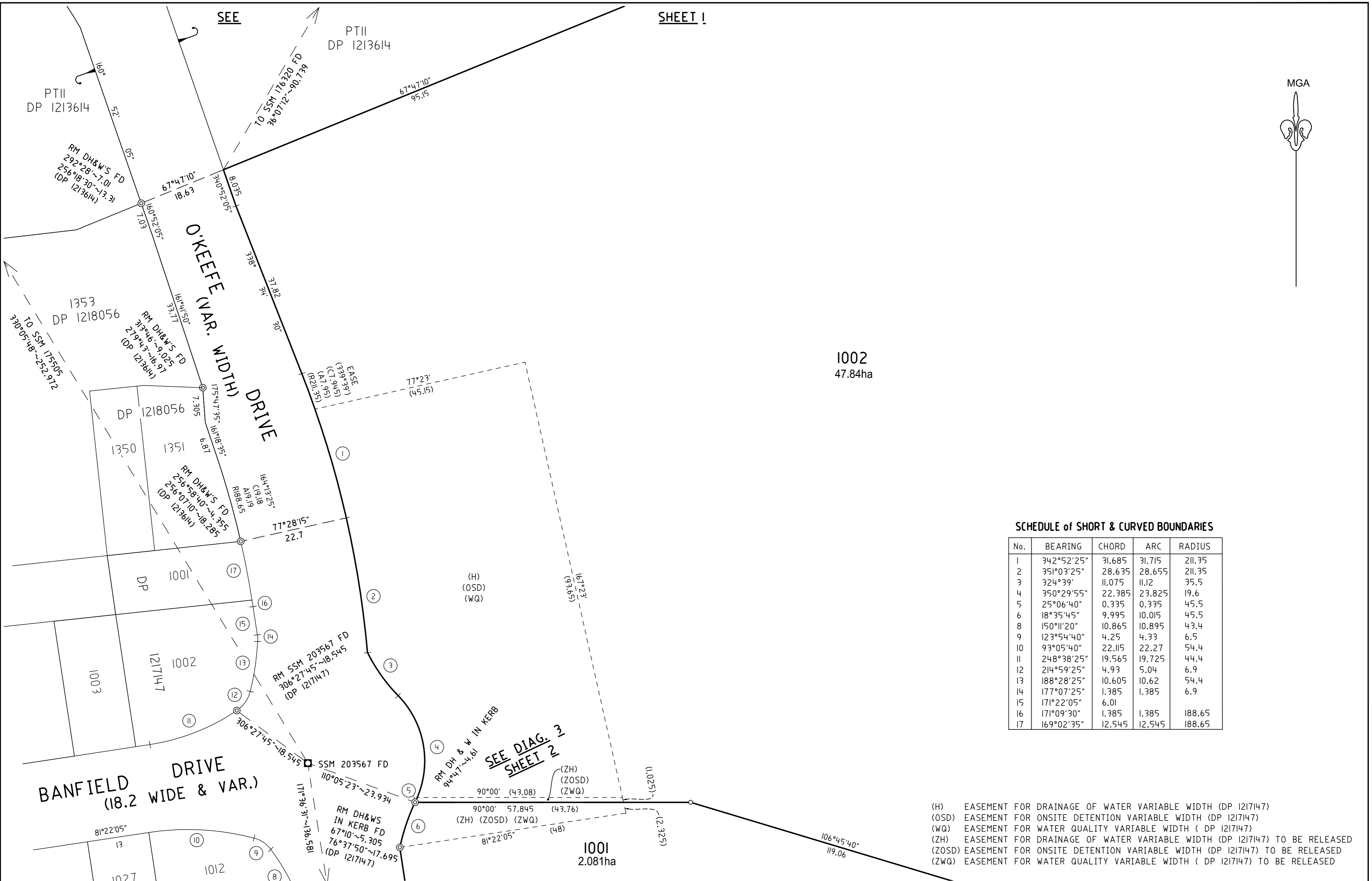


- (ZA2) AREA BENEFITED BY EASEMENT FOR DRAINAGE OF WATER 1.5 WIDE (DP 1217147)
- (ZA3) AREA BENEFITED BY EASEMENT FOR DRAINAGE OF WATER 1.5 WIDE (DP 1217147)
- (ZA4) AREA BENEFITED BY EASEMENT FOR DRAINAGE OF WATER 1.5 WIDE (DP 1217147)
- (ZC1) EASEMENT FOR DRAINAGE OF WATER VARIABLE WIDTH (DP 1217147)
- (ZC2) EASEMENT FOR RIGHT OF ACCESS VARIABLE WIDTH (DP 1217147)
- (ZT) EASEMENT FOR UNDERGROUND CABLES 1.5 WIDE AND VARIABLE (DP 1217147)

<p>Surveyor: KIM FRANCIS MURPHY CALIBRE CONSULTING (NSW) P/L T: (02) 8808 5000 Date of Survey: 30 AUGUST 2017 Surveyor's Ref: 15-000917-SCHOOL</p>	<p>PLAN OF SUBDIVISION OF LOT 3 IN DP 1213590 AND LOT 1296 IN DP 1218055</p>	<p>LGA: CAMDEN COUNCIL Locality: ORAN PARK Subdivision No: Lengths are in metres. Reduction Ratio 1:500</p>		<h1>DP 1234527</h1>
--	---	--	--	---------------------



SCHEDULE of SHORT & CURVED BOUNDARIES

No.	BEARING	CHORD	ARC	RADIUS
1	342°52'25"	31.685	31.715	211.35
2	351°03'25"	28.635	28.655	211.35
3	324°39'	11.075	11.12	35.5
4	350°29'55"	22.385	23.825	19.6
5	25°06'40"	0.335	0.335	45.5
6	18°35'45"	9.995	10.015	45.5
8	150°11'20"	10.865	10.895	43.4
9	123°54'40"	4.25	4.33	6.5
10	93°05'40"	22.115	22.27	54.4
11	248°38'25"	19.565	19.725	44.4
12	214°59'25"	4.93	5.04	6.9
13	188°28'25"	10.605	10.62	54.4
14	177°07'25"	1.385	1.385	6.9
15	171°22'05"	6.01		
16	171°09'30"	1.385	1.385	188.65
17	169°02'35"	12.545	12.545	188.65

(H) EASEMENT FOR DRAINAGE OF WATER VARIABLE WIDTH (DP 1217147)
 (OSD) EASEMENT FOR ONSITE DETENTION VARIABLE WIDTH (DP 1217147)
 (WQ) EASEMENT FOR WATER QUALITY VARIABLE WIDTH (DP 1217147)
 (ZH) EASEMENT FOR DRAINAGE OF WATER VARIABLE WIDTH (DP 1217147) TO BE RELEASED
 (ZOSD) EASEMENT FOR ONSITE DETENTION VARIABLE WIDTH (DP 1217147) TO BE RELEASED
 (ZWQ) EASEMENT FOR WATER QUALITY VARIABLE WIDTH (DP 1217147) TO BE RELEASED

Surveyor: KIM FRANCIS MURPHY CALIBRE CONSULTING (NSW) P/L T: (02) 8808 5000 Date of Survey: 30 AUGUST 2017 Surveyor's Ref: 15-000917-SCHOOL	PLAN OF SUBDIVISION OF LOT 3 IN DP 1213590 AND LOT 1296 IN DP 1218055	LGA: CAMDEN COUNCIL Locality: ORAN PARK Subdivision No: Lengths are in metres. Reduction Ratio 1:500
DP 1234527		