



Reptile + Amphibian Conservation Centre

SITE ANALYSIS



SYDNEY
HARBOUR
BRIDGE

SYDNEY
OPERA
HOUSE

TARONGA ZOO

RACC SITE



LEGEND

- EXISTING BUILDING
- EXISTING BUILDINGS DEMOLISHED OR RELOCATED
- LANDSCAPE
- WATER/ POND
- STAGE 1 PROPOSED DEVELOPMENT SITE
- TARONGA ZOO SITE BOUNDARY
- TARONGA PROPOSED DEVELOPMENT SITE

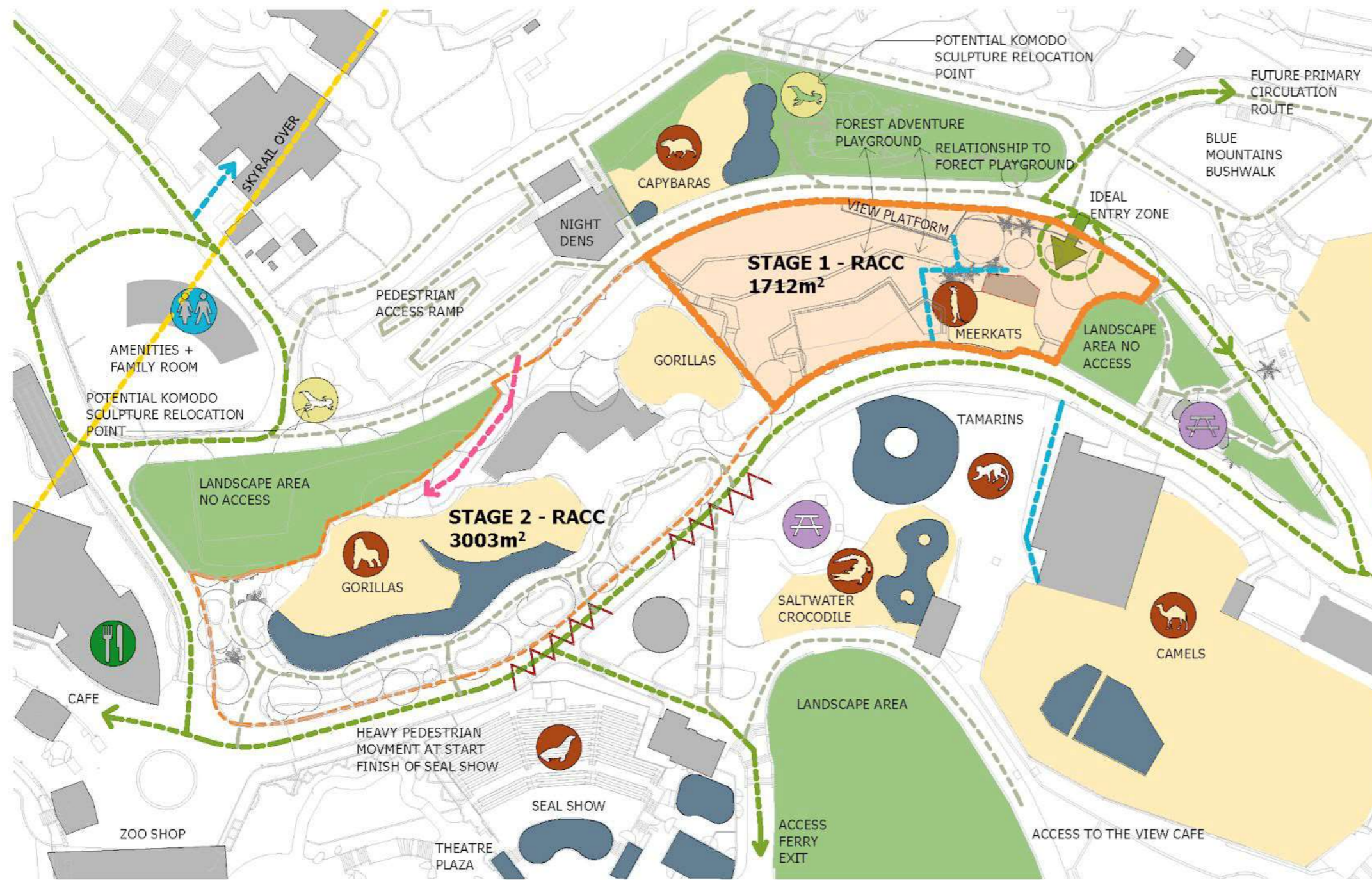
SITE BOUNDARY

Stage 2 does not form part of the project scope and is designed to assist with future site planning



RACC - SITE BOUNDARY
Taronga Wildlife Hospital & Conservation Centre





LEGEND

- EXISTING BUILDING
- EXISTING BUILDINGS DEMOLISHED OR RELOCATED
- EXHIBITS
- LANDSCAPE
- WATER/ POND
- STAGE 1 PROPOSED DEVELOPMENT SITE
- TARONGA ZOO SITE BOUNDARY
- TARONGA PROPOSED DEVELOPMENT SITE
- PRIMARY PEDESTRIAN CIRCULATION
- SECONDARY PEDESTRIAN CIRCULATION
- HEAVY PEDESTRIAN ACTIVITY
- STAFF PEDESTRIAN ACCESS
- STAFF VEHICLE ACCESS
- SKYRAIL
- MAIN VISITOR ENTRY
- PUBLIC TOILETS
- CAFE
- ACCOMMODATION
- EXHIBIT
- FERRY
- P PARKING
- PICNIC AREA

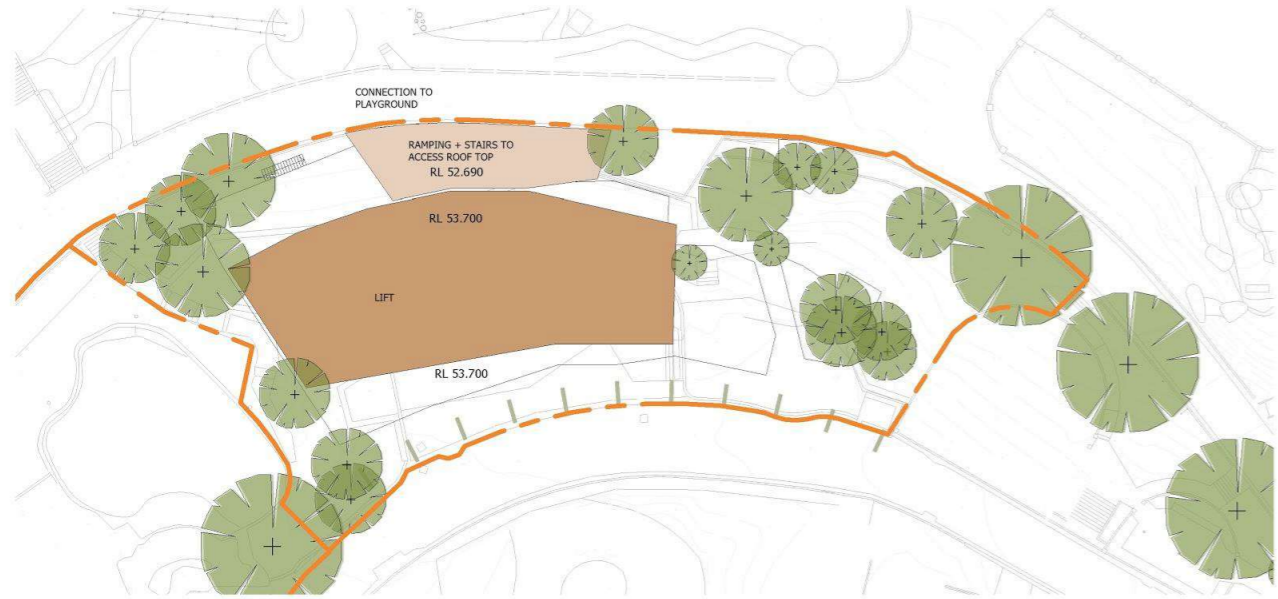
AREA ANALYSIS + CIRCULATION

Stage 2 does not form part of the project scope and is designed to assist with future site planning



AREA ANALYSIS + CIRCULATION
Taronga Wildlife Hospital & Conservation Centre





ROOF TOP BUILDING ENVELOPE = 460m²



LEVEL 1 BUILDING ENVELOPE = 780m²



GROUND FLOOR BUILDING ENVELOPE = 595m²

