

Taronga Zoo - Site Location



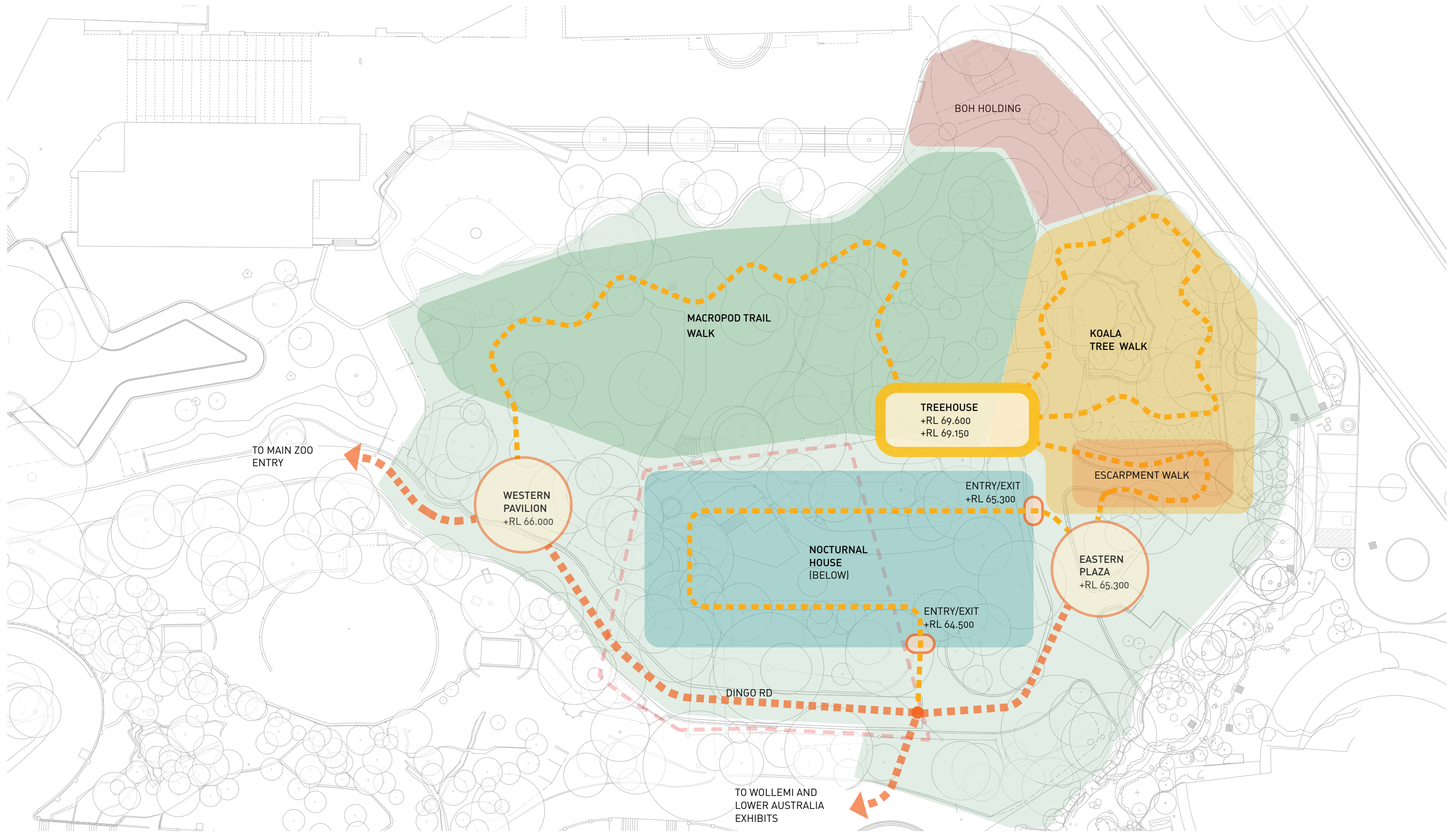
# TARONGA ZOO - UPPER AUSTRALIA HABITAT CONCEPT PRESENTATION





# SITE PLAN

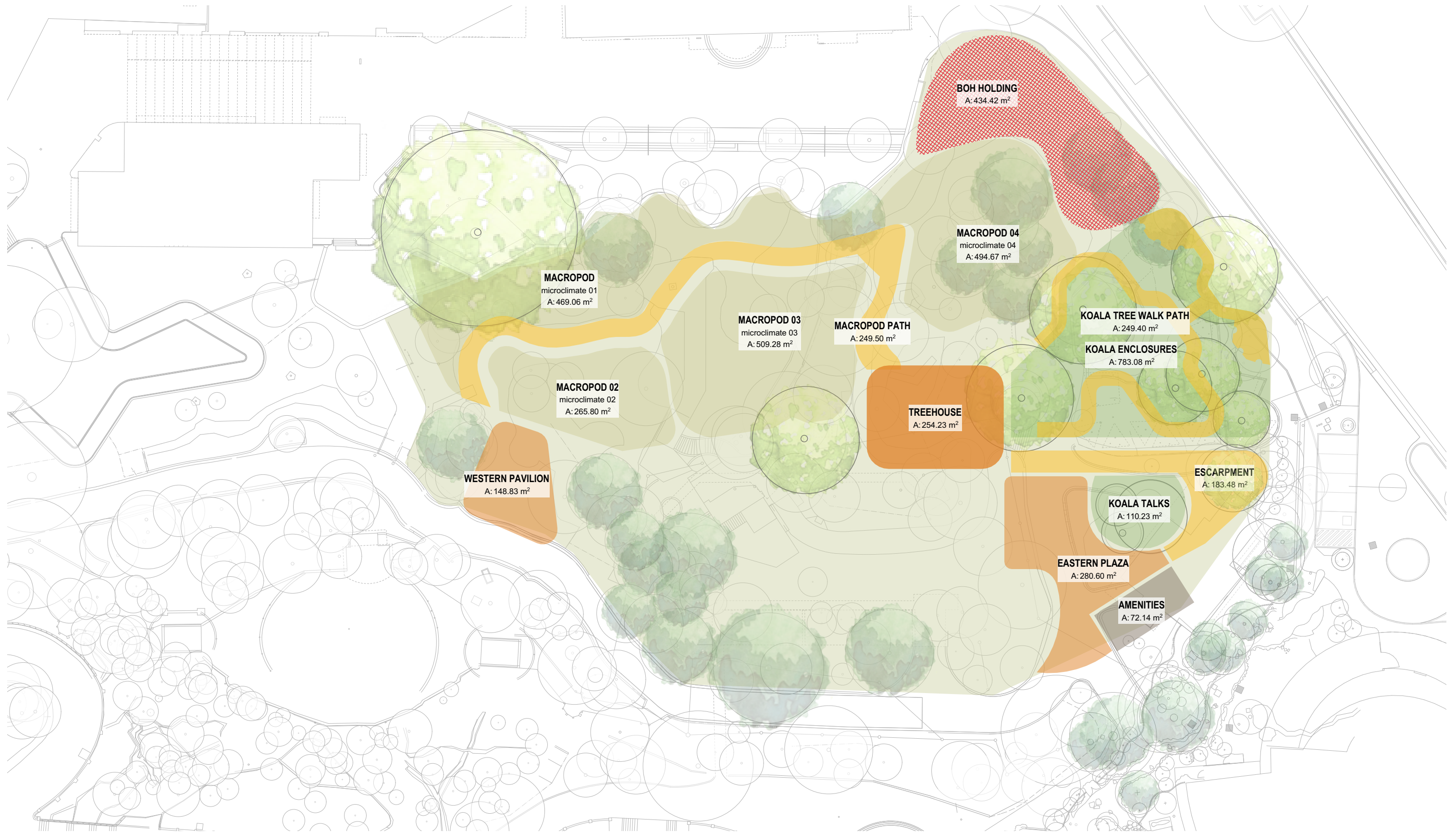
## EXHIBIT CIRCULATION





# SITE PLAN

## AREAS





# SITE PLAN

SKETCH PLAN





# SITE PLAN

## WESTERN PAVILION VISION





# SITE PLAN

ALTERNATE BUSH TRACK



- ALTERNATE BUSH WALK**
- ADVENTUROUS ALTERNATE PATH
  - NATURE FOCUSSED
  - OPPORTUNITY FOR TOUCH AND FEEL LANDSCAPE
  - KIDS EXPLORATION
  - OPPORTUNITIES TO DWELL WITH OUTLOOK TO EXHIBIT





# SITE PLAN

## KOALA LOOKOUT



- KOALA LOOKOUT**
- MIDPOINT DESTINATION
  - 2.5-3.0M ADDITIONAL HEIGHT WITH LOOKOUT
  - KIDS PLAY AND ADVENTURE
  - OPPORTUNITY FOR MESSAGING WITHIN EXHIBIT
  - ADJACENT TO WAITING AREA FOR ENCOUNTERS





# SITE PLAN

## EASTERN PLAZA COVERED AREA





# SITE PLAN

## MACROPODS





# SITE PLAN

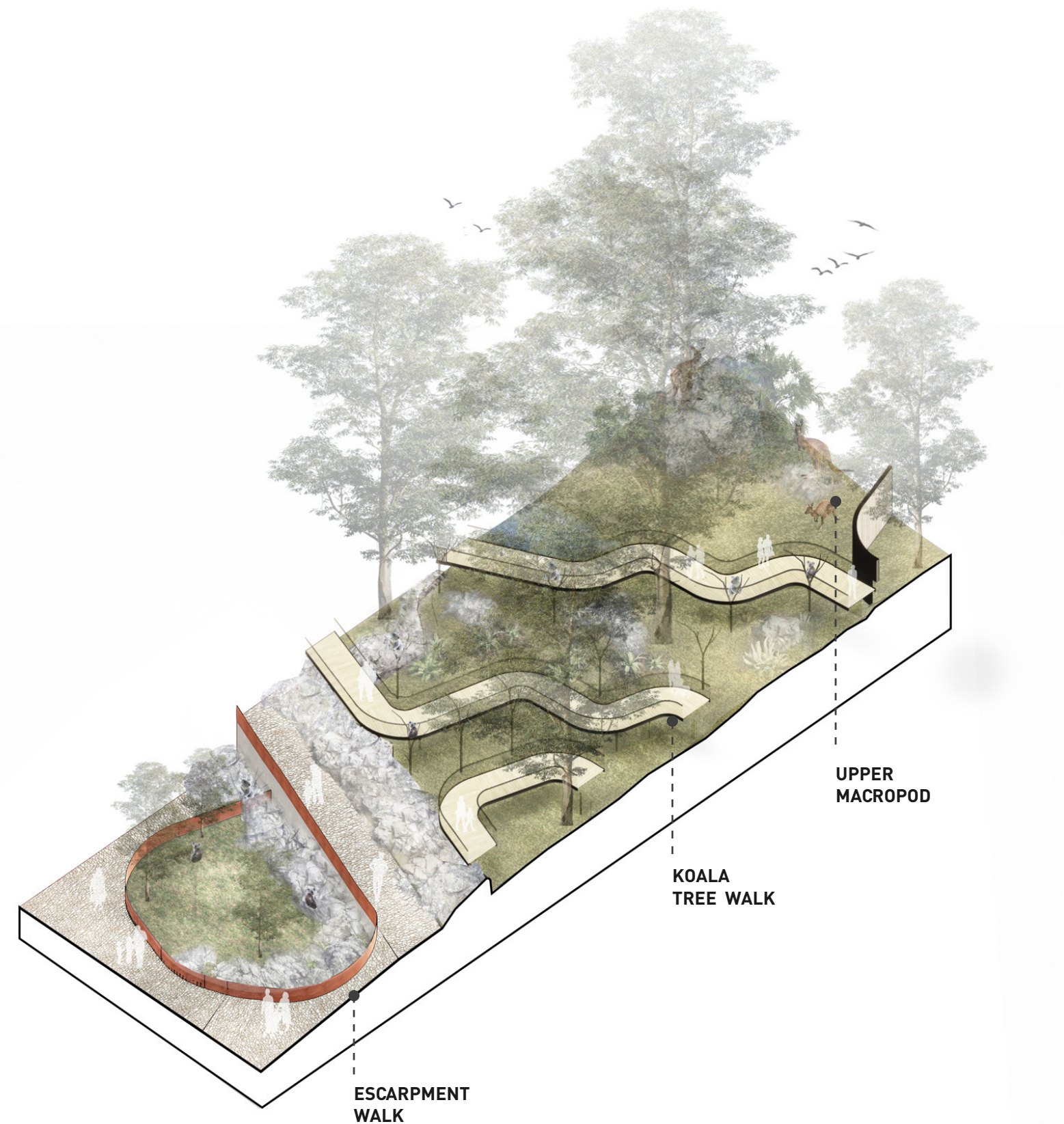
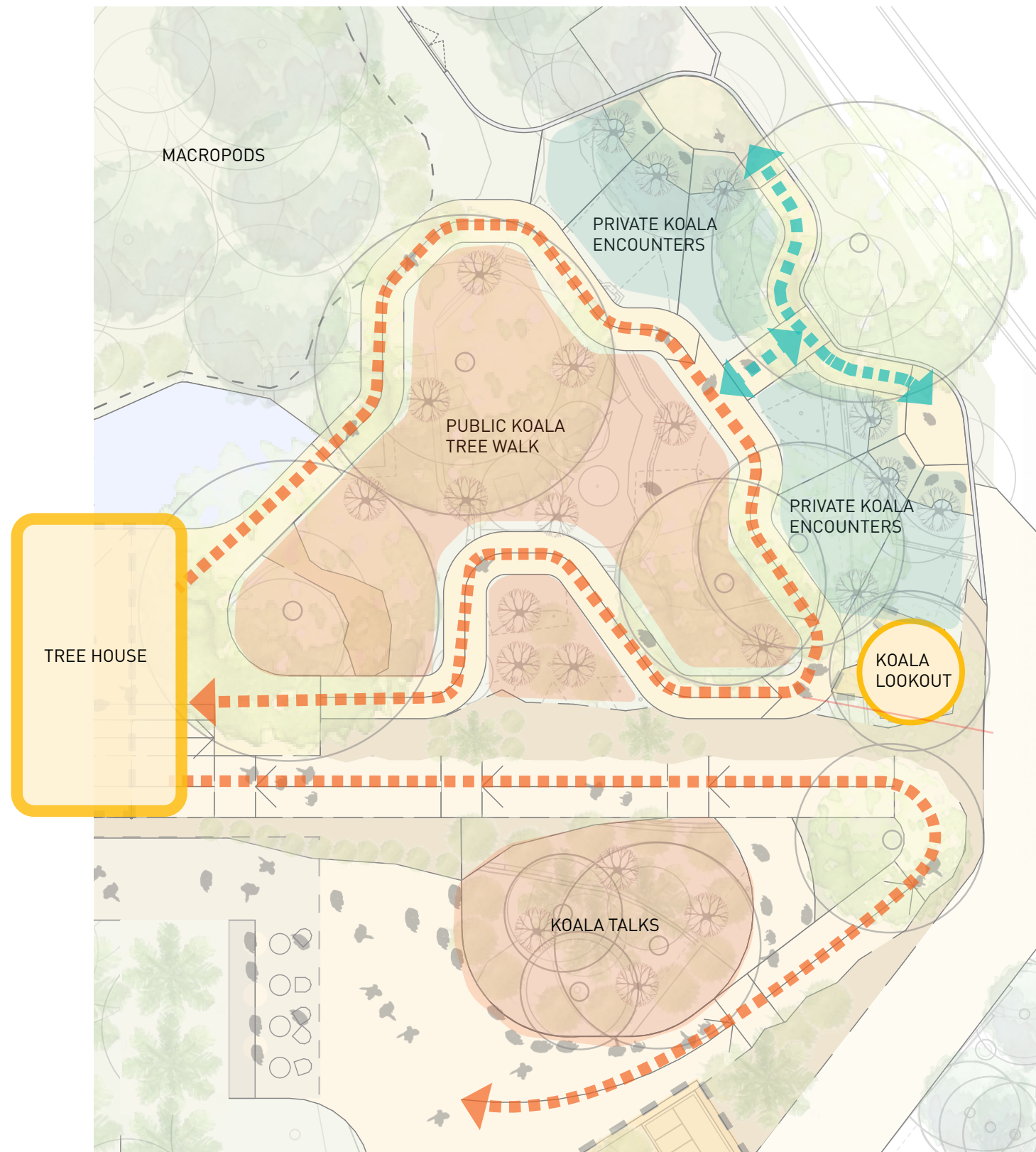
## KOALAS





# SITE SECTION

## KOALAS





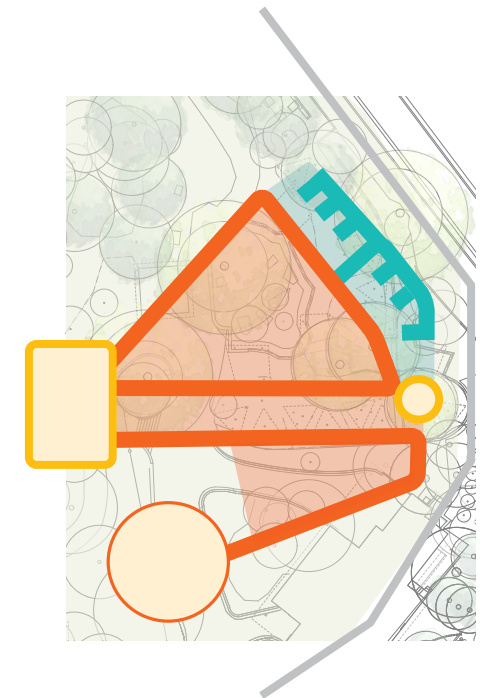
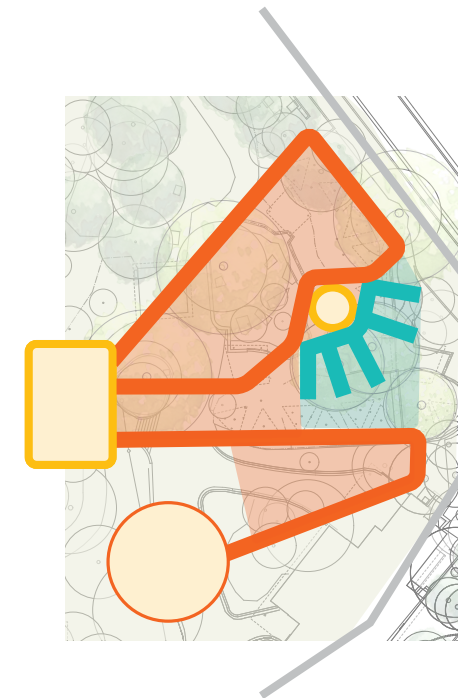
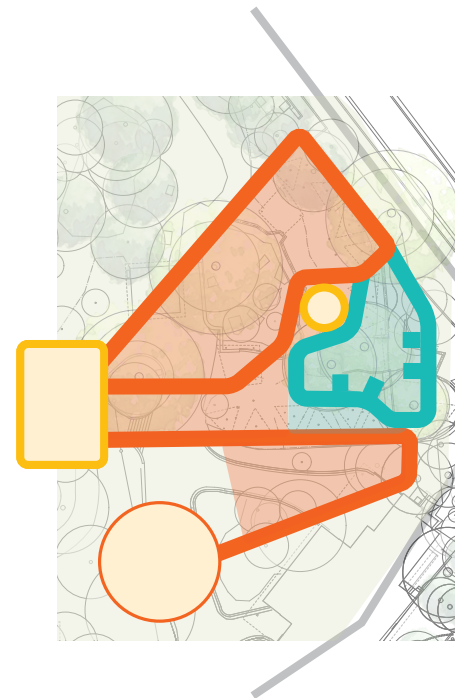
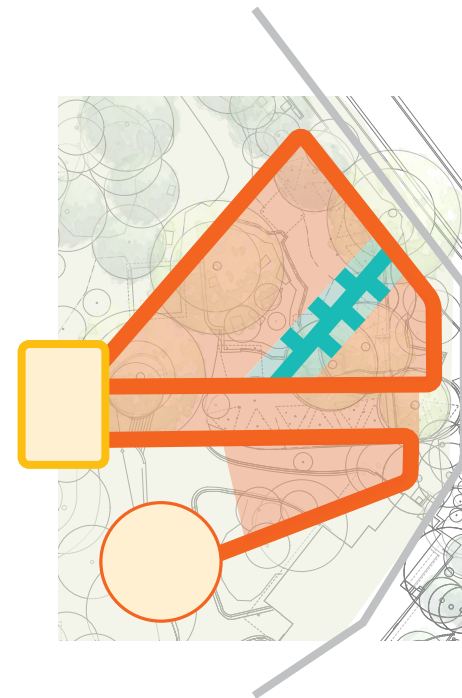
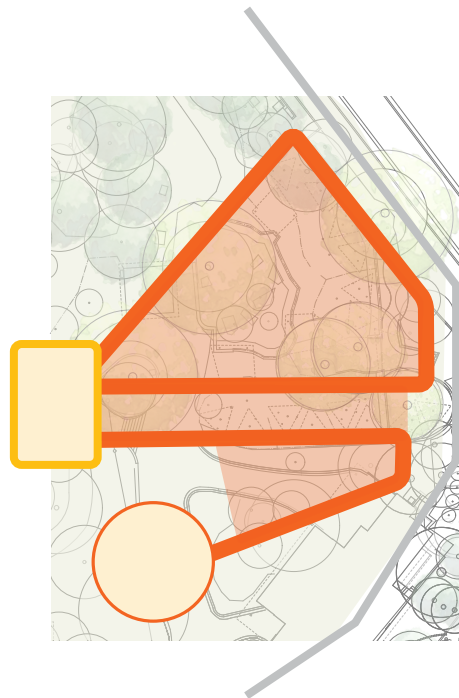
# KOALA EXPERIENCE

## PUBLIC Vs PRIVATE ANALYSIS DIAGRAMS

AS PRESENTED IN CONCEPT  
PRESENTATION 23.03.20

CONCEPT AS PROVIDED BY TZ  
KEEPERS IN KOALA WORKSHOP  
DATED 26.03.20  
OPTION 01 IN THIS PRESENTATION

ALTERNATE OPTION PROVIDED BY  
LNA TO INCLUDE DETAIL DISCUSSED  
IN KOALA WORKSHOP  
OPTION 03 IN THIS PRESENTATION



01.  
ALL PUBLIC  
(NO PRIVATE  
EXPERIENCE)

02.  
PRIVATE KOALA  
ENCOUNTERS SPINE

03.  
PRIVATE KOALA ENCOUNTERS LOOP  
AT 3.5m BOARDWALK LEVEL

INCLUSION OF KOALA LOOKOUT  
BETWEEN PUBLIC LOOP AND  
ENCOUNTERS LOOP. LOOKOUT TO  
ACHIEVE 6m ELEVATION

04.  
INDIVIDUAL KOALA "FINGER" BAYS  
TO ACHIEVE 3.5m BOARDWALK  
LEVEL

KOALA LOOKOUT TO SEPARATE  
PUBLIC LOOP FROM PRIVATE  
ENCOUNTERS. KOALA LOOKOUT TO  
ACHIEVE 6m ELEVATION

05.  
PRIVATE KOALA ENCOUNTERS  
PLATFORMS AT 2.5-3.5m  
BOARDWALK LEVEL LOCATED  
ALONG BOUNDARY EDGE

KOALA LOOKOUT IN SOUTHEAST  
CORNER TO REDUCE BULK WITHIN  
PUBLIC LOOP. LOOKOUT TO  
ACHIEVE 6m ELEVATION

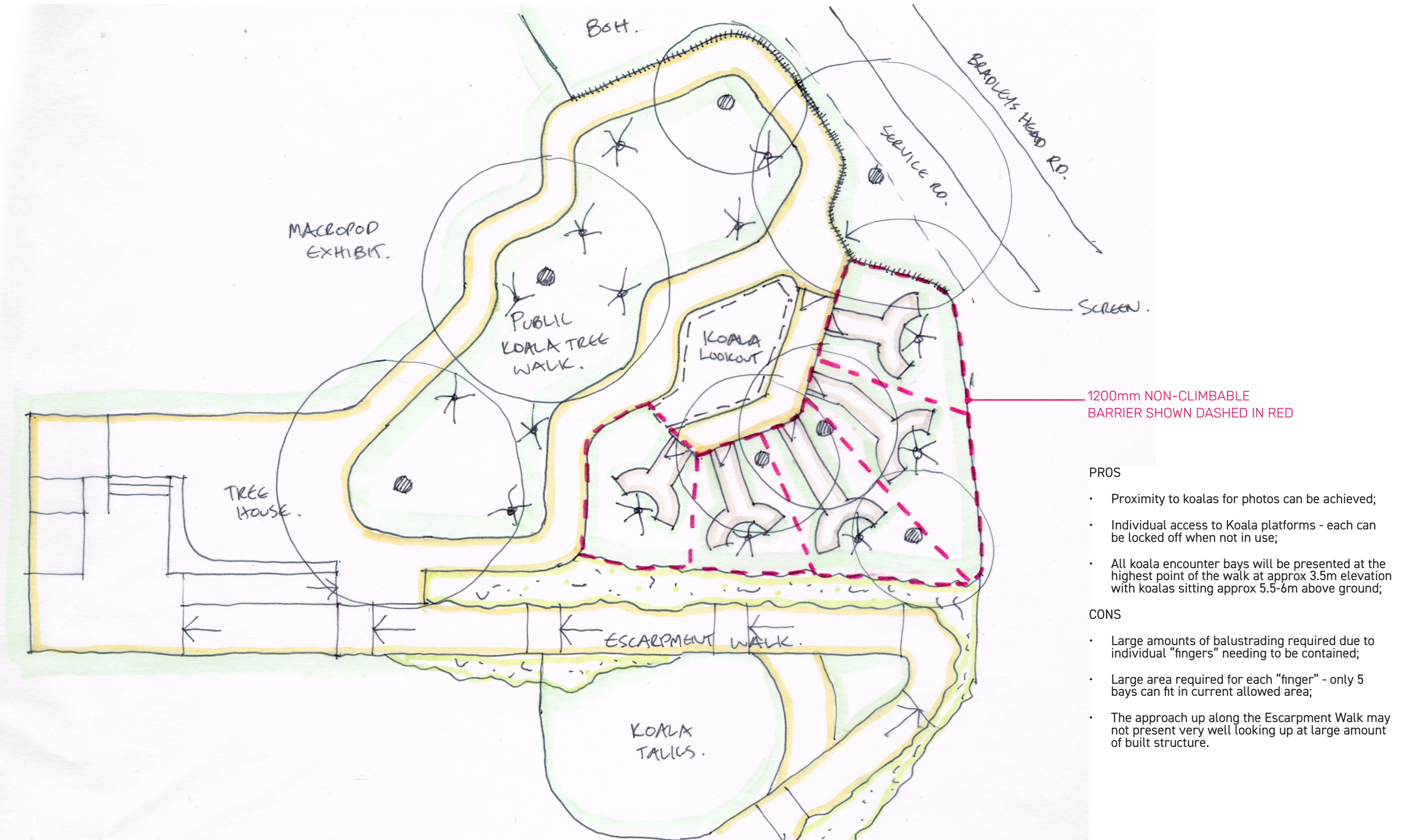
KEY

-  PRIVATE KOALA ENCOUNTER
-  PUBLIC KOALA WALK/VIEWING
-  KOALA LOOKOUT



# OPTION 01

KEEPER'S CONCEPT PLAN WITH ENCOUNTER BAYS AS INDIVIDUAL "FINGERS"



## PROS

- Proximity to koalas for photos can be achieved;
- Individual access to Koala platforms - each can be locked off when not in use;
- All koala encounter bays will be presented at the highest point of the walk at approx 3.5m elevation with koalas sitting approx 5.5-6m above ground;

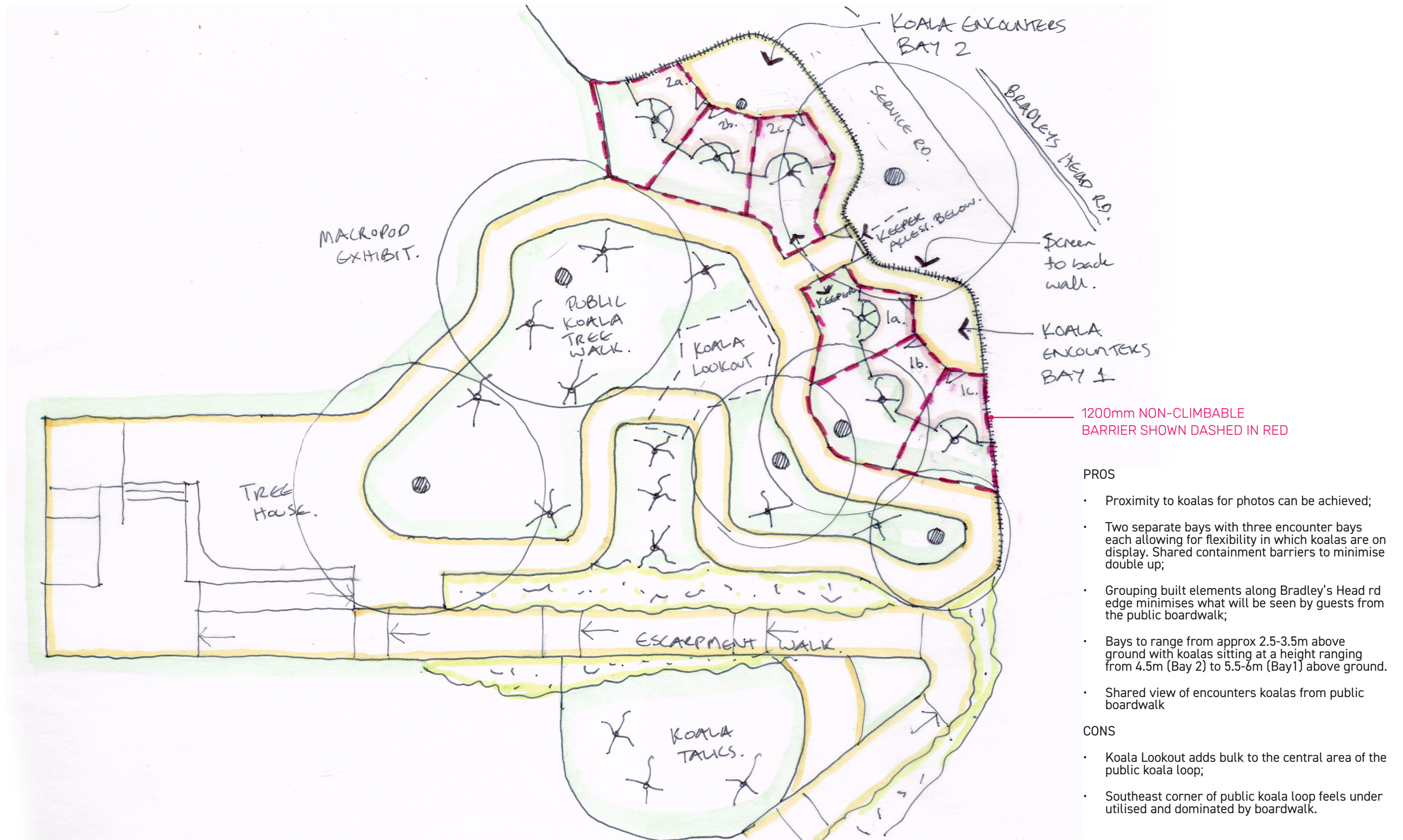
## CONS

- Large amounts of balustrading required due to individual "fingers" needing to be contained;
- Large area required for each "finger" - only 5 bays can fit in current allowed area;
- The approach up along the Escarpment Walk may not present very well looking up at large amount of built structure.



# OPTION 02

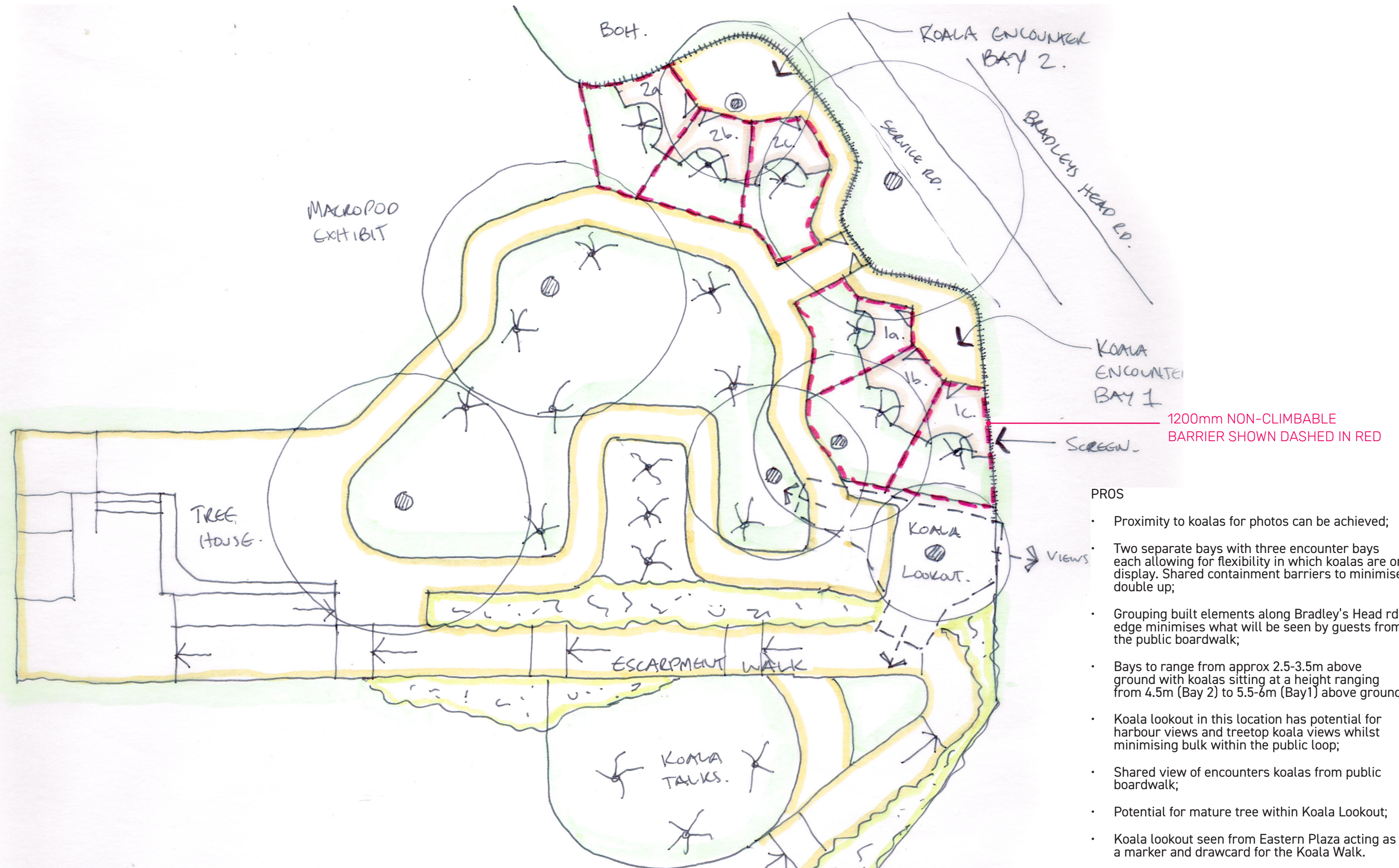
## ENCOUNTER BAYS AS PLATFORMS SEPARATED BY NON-CLIMBABLE BARRIERS





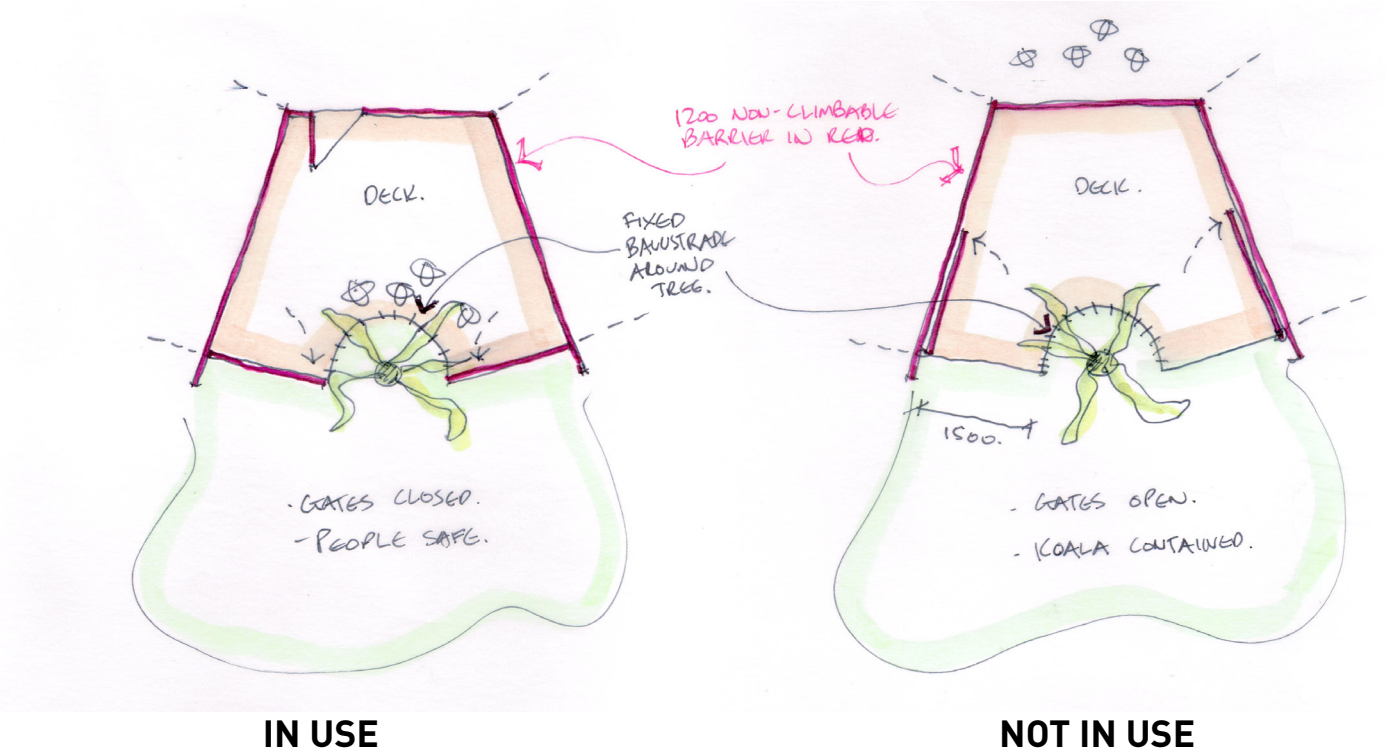
# OPTION 03

## ENCOUNTER BAYS AS PLATFORMS SEPARATED BY NON-CLIMBABLE BARRIERS - KOALA LOOKOUT IN SOUTHEAST CORNER

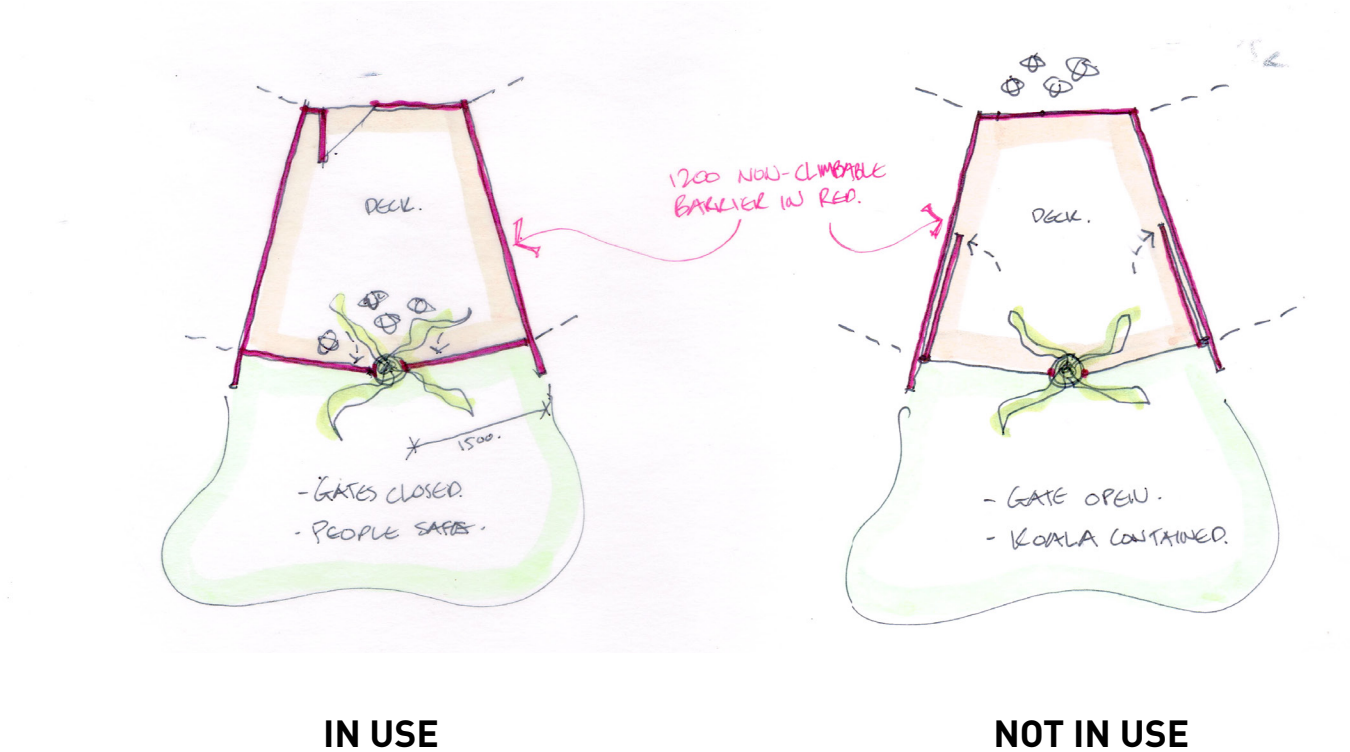




**01**  
FIXED BALUSTRADE AROUND TREE

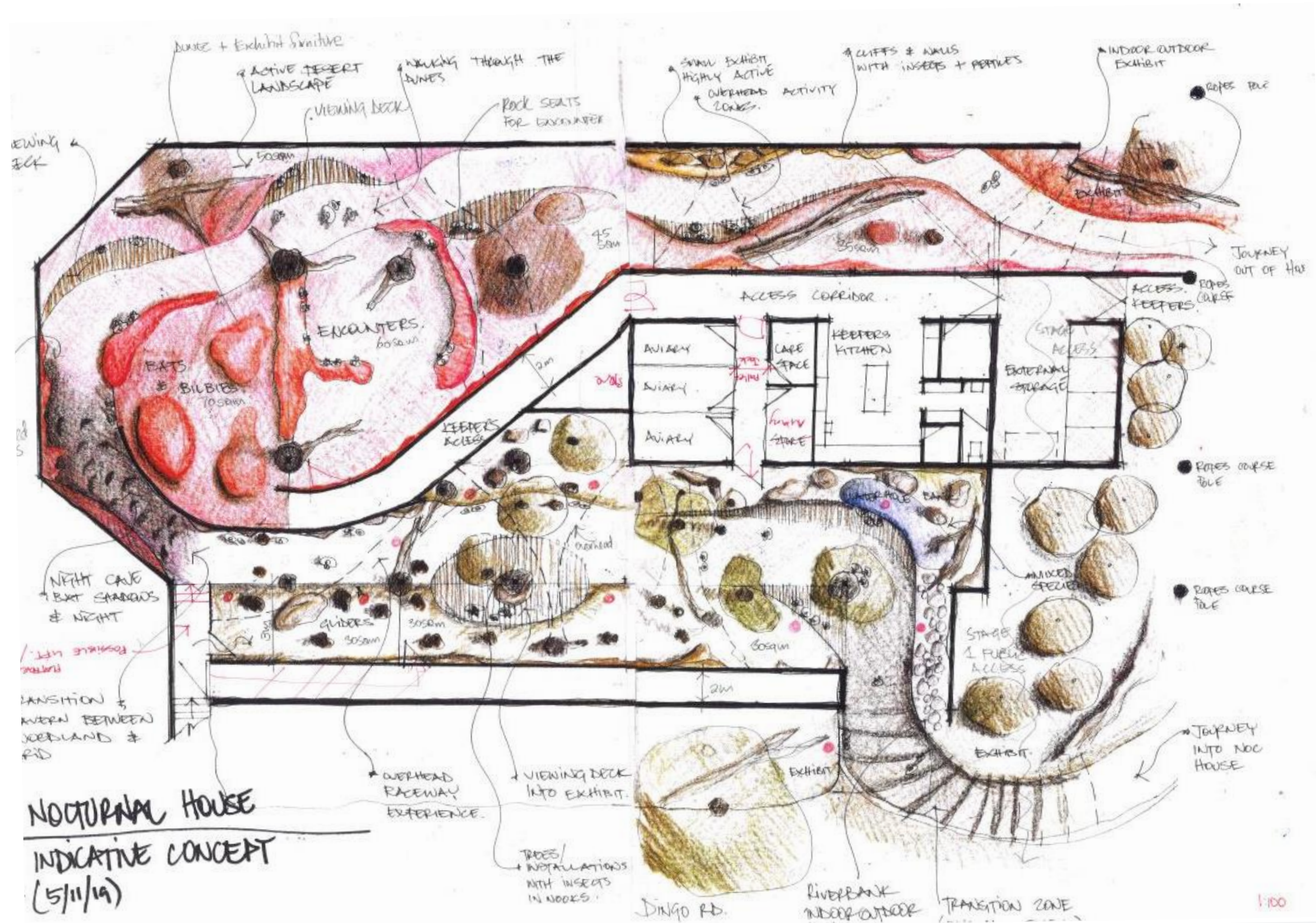


**02**  
NO BALUSTRADE VISIBLE WHEN  
GATES IN OPEN POSITION





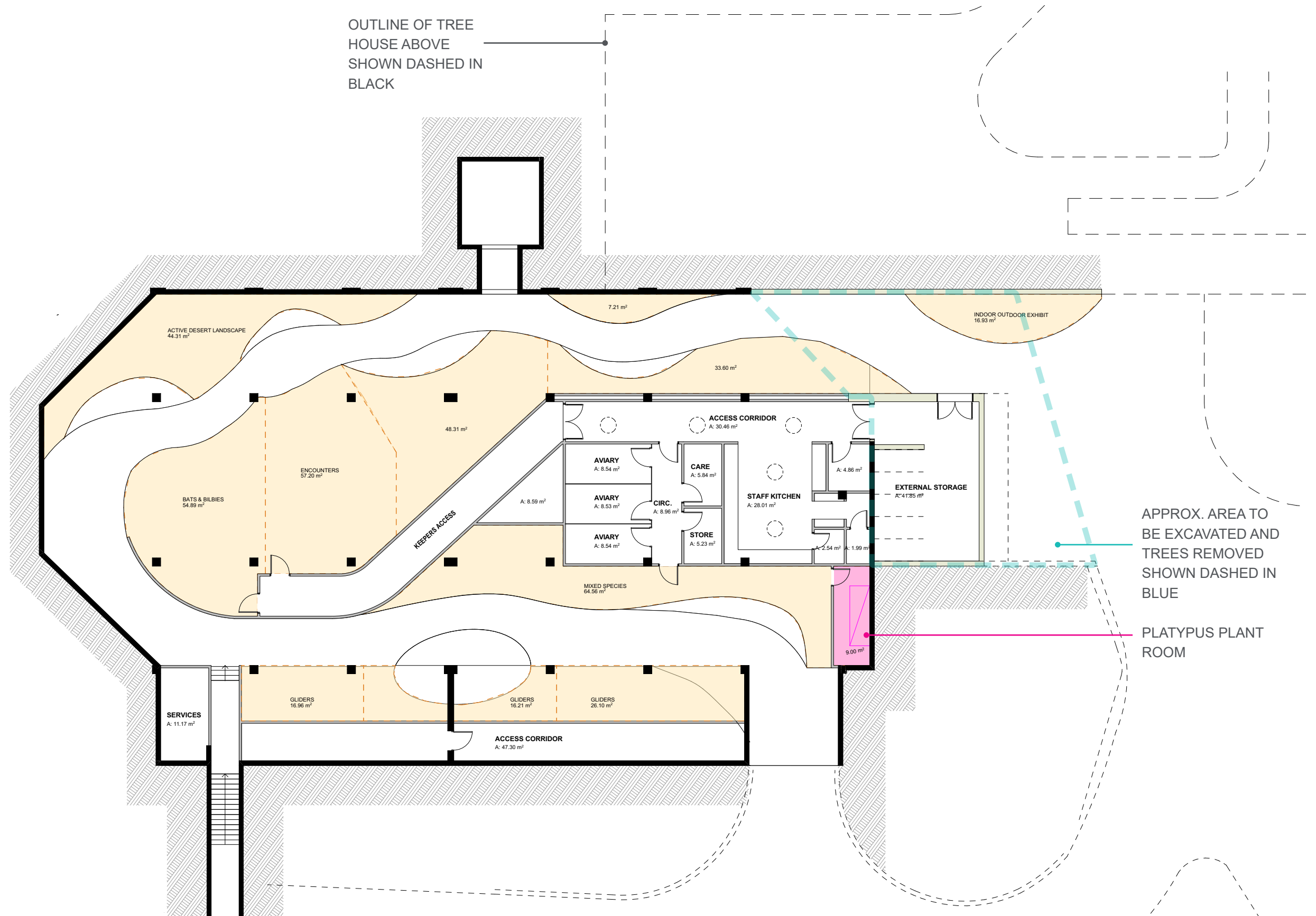
# NOCTURNAL HOUSE





# SITE PLAN

## NOCTURNAL HOUSE



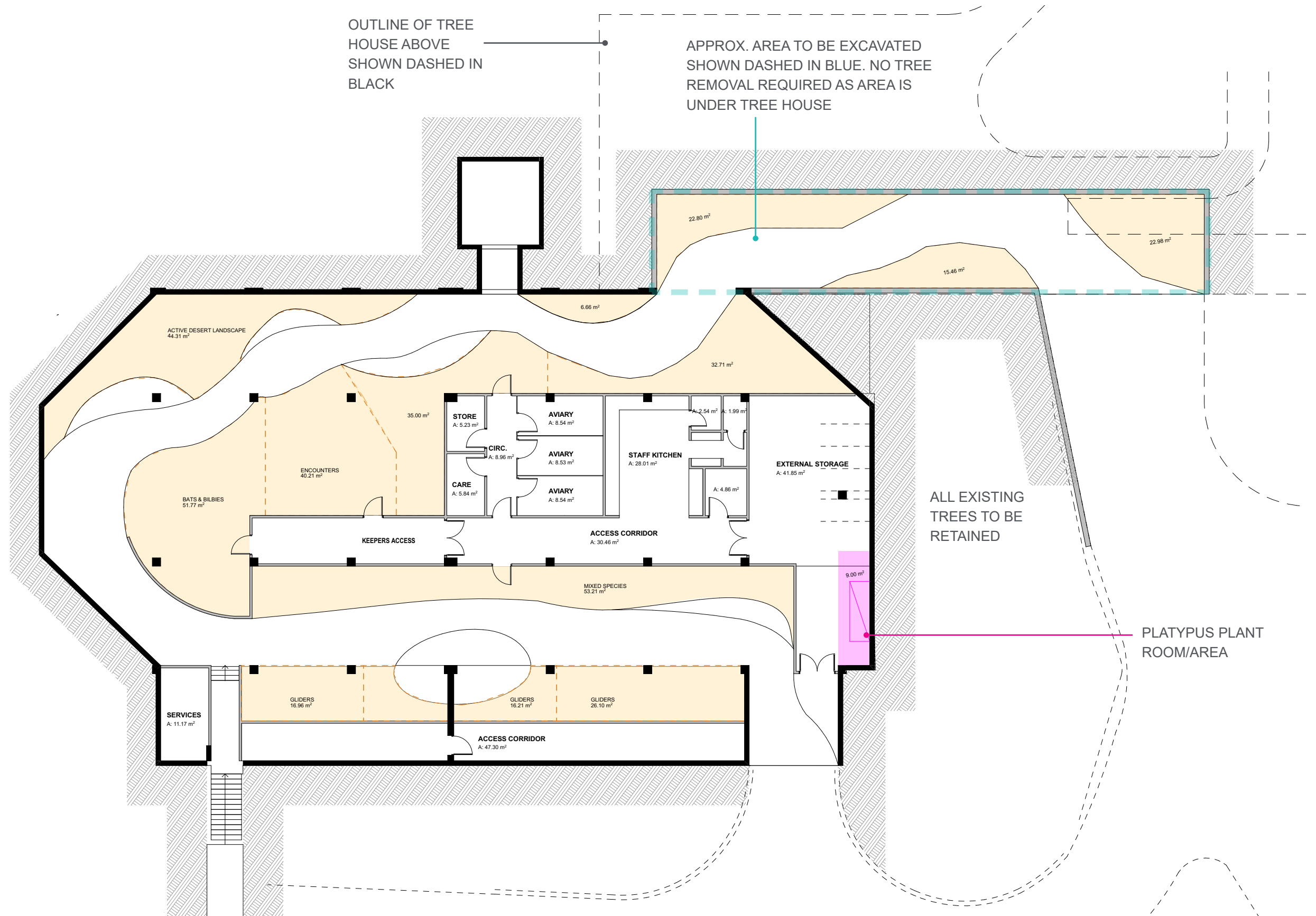
TOTAL EXHIBIT AREA:

**386m²**



# SITE PLAN

## NOCTURNAL HOUSE



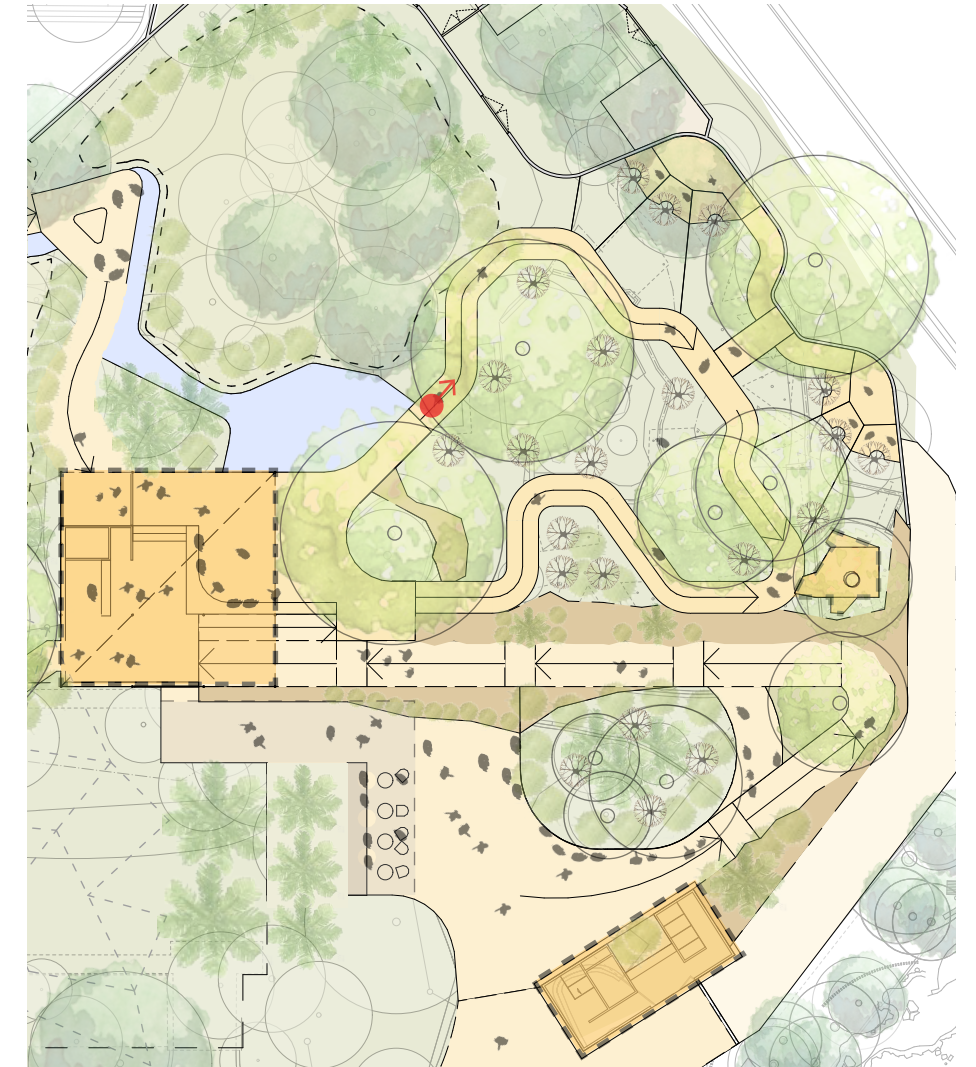
TOTAL EXHIBIT AREA:

**384m²**



# KOALA EXPERIENCE

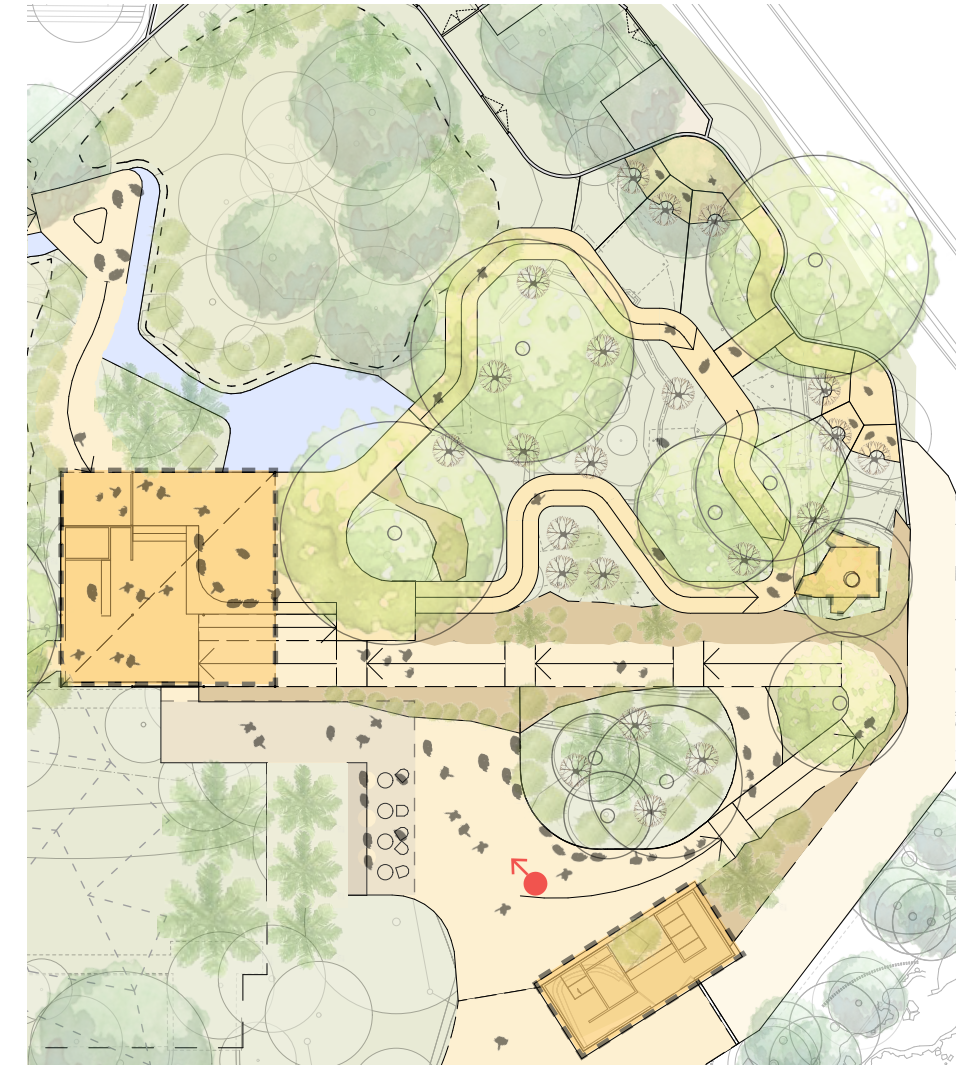
VIEW FROM KOALA WALK





# KOALA EXPERIENCE

VIEW FROM EASTERN PLAZA





# PROPOSED TREE REMOVAL

