

Scoping Report.

REQUEST FOR SECRETARY'S ENVIRONMENTAL
ASSESSMENT REQUIREMENTS

ATTACHMENT 06 LIDAR CONTOURS

OCTOBER 2019

ZONE PLANNING GROUP

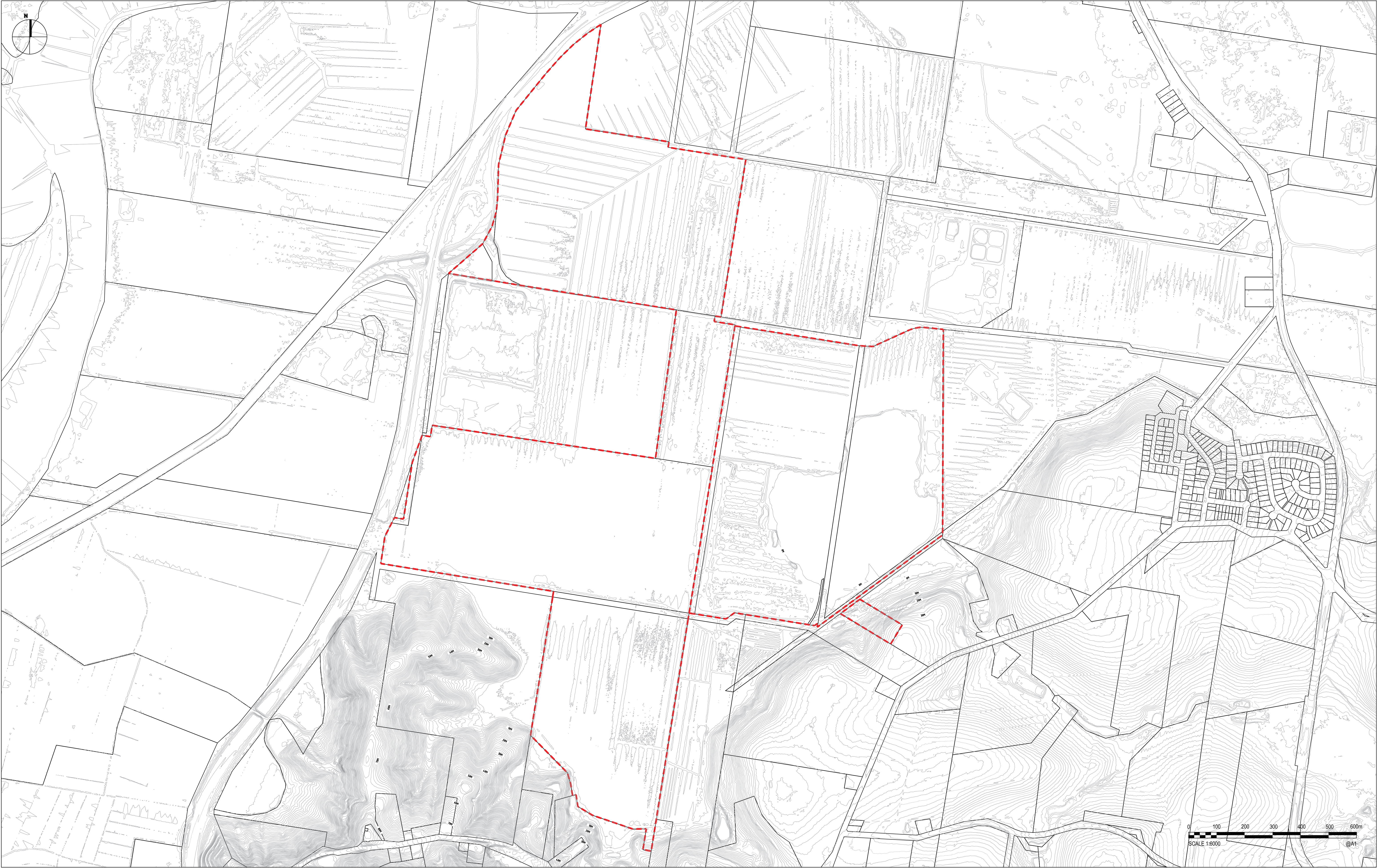
GOLD COAST

1638 TWEED STREET, BURLEIGH HEADS QLD 4220
PO BOX 3805, BURLEIGH TOWN QLD 4220

GLADSTONE

2/172 GOONDOON ST, GLADSTONE, QLD 4680
PO BOX 5332, GLADSTONE QLD 4680 | PH 07 4972 3831

ADMIN@ZONEPLANNING.COM.AU



PROJECT TITLE
HANSON TWEED SAND PLANT
PHASE 5-11
DRAWING TITLE
CONTOUR PLAN

REV	DESCRIPTION	DATE	DRAWN	DESIGN	CHECK	APPROVED
-	-	-	-	-	-	-

ISSUE:	PRELIMINARY	CLIENT:	HANSON CONSTRUCTION MATERIALS PTY LTD
BASE PROVIDED BY:	SIXMAPS DCDB	MANAGER:	LANCE NEWLEY

COPYRIGHT Zone Planning Group 2018. This document and the information are solely for the use of the authorised recipient and this document may not be used, copied or reproduced in whole or part for any purpose other than that for which it was supplied by Zone Planning Group 2018. Zone Planning Group makes no representation, undertakes no duty and accepts to responsibility to any third party who may use or rely upon this document or the information.



ZONE PLANNING GROUP
GOLD COAST
1638 Tweed Street, Burleigh Heads QLD 4220
PO Box 3805, Burleigh Town QLD 4220
GLADSTONE
2/172 Goondoon St, Gladstone, QLD 4680
PO Box 5332, Gladstone QLD 4680
zonelandscape.com.au | 07 55622303

JOB / DRAWING NO:
Z19163- 106

SHEET NO.
SHEET 01 OF 01