

Scoping Report.

REQUEST FOR SECRETARY'S ENVIRONMENTAL
ASSESSMENT REQUIREMENTS

ATTACHMENT 02 END USE CONCEPT PLAN

OCTOBER 2019

ZONE PLANNING GROUP

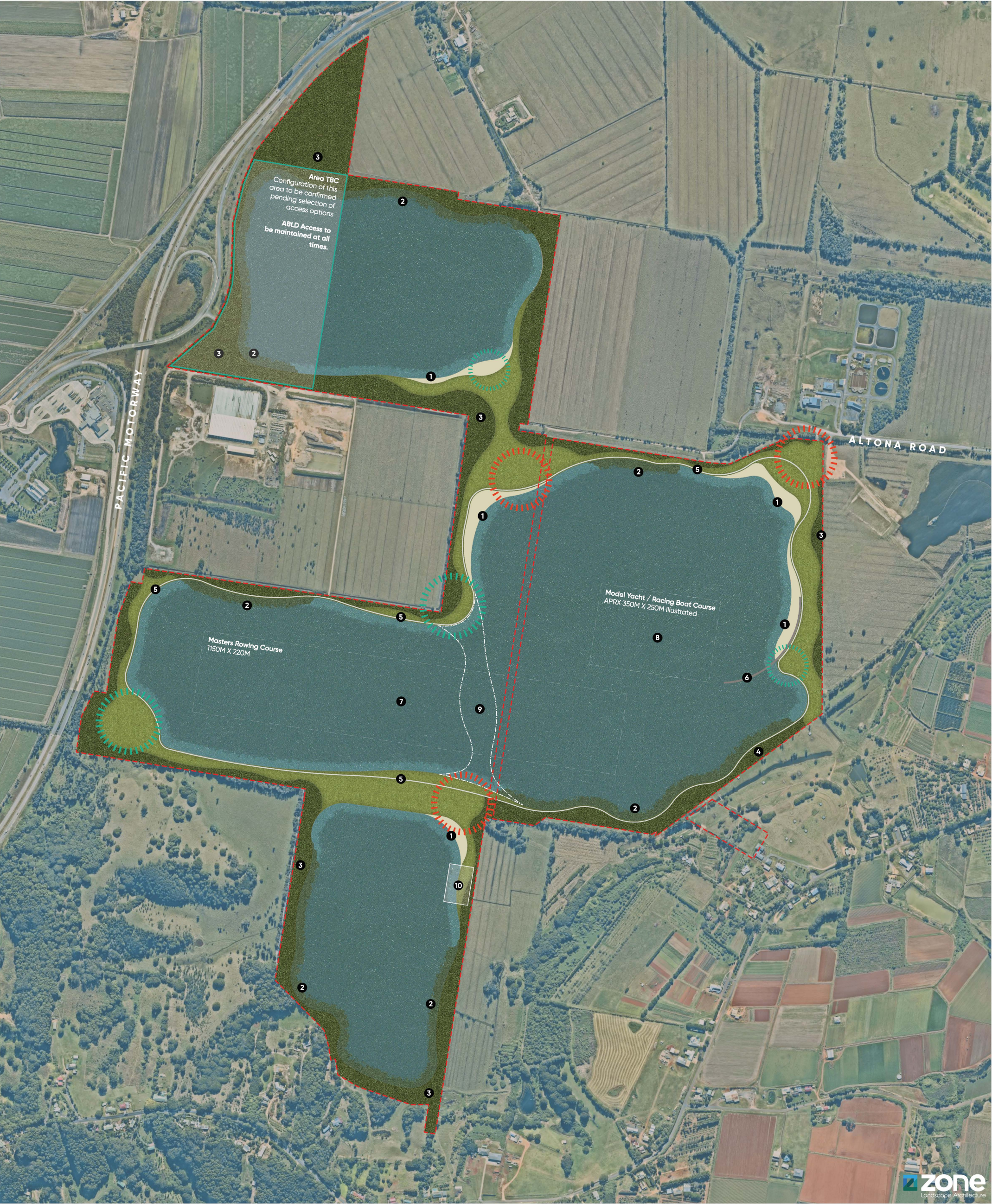
GOLD COAST

1638 TWEED STREET, BURLEIGH HEADS QLD 4220
PO BOX 3805, BURLEIGH TOWN QLD 4220

GLADSTONE

2/172 GOONDOON ST, GLADSTONE, QLD 4680
PO BOX 5332, GLADSTONE QLD 4680 | PH 07 4972 3831

ADMIN@ZONEPLANNING.COM.AU



END USE CONCEPT PLAN

This plan has been prepared to illustrate a potential end use multi-use facility which will support a wide range of active and passive recreational activities. To be read in conjunction with End Use Concepts: Discussion Points document prepared by Gilbert & Sutherland.

Key Goals
Provide a self-sustaining, water body with stable acceptable water quality
Provide an environment that supports a diverse ecosystem of native flora designed to provide habitat for native fauna.

Create a visually pleasing site with water bodies and vegetation designed to achieve a 'natural' appearance.

Provide a range of passive and active recreational activities such as rowing, sailing, boating, canoeing, fishing or cable ski activities.

Provide educational infrastructure to support fauna/flora education and study at a community, school and/or tertiary research level.

Creation of a substantial areas of natural habitat for fauna/fauna species (local and migratory).

- KEY

 - Primary Recreation Nodes**
 - Secondary Activity Nodes**
Shelters & rest stops
Educational nodes
Formal & Informal seating
- 1** Beach
 - 2** Wetland rehabilitation areas (including floating wetlands)
- 3** Rehabilitation areas
 - 4** Large tree rehabilitation
 - 5** Pathway network
 - 6** Jetty
 - 7** Masters rowing course
Built Structure TBC
 - 8** Model yacht & boat racing course
Built Structure TBC
 - 9** Potential additional lake bund
 - 10** Potential food & drink premises

