

# Scoping Report.

REQUEST FOR SECRETARY'S ENVIRONMENTAL  
ASSESSMENT REQUIREMENTS

## ATTACHMENT 01 CONCEPT DEVELOPMENT/ PHASING PLAN

**OCTOBER 2019**

ZONE PLANNING GROUP

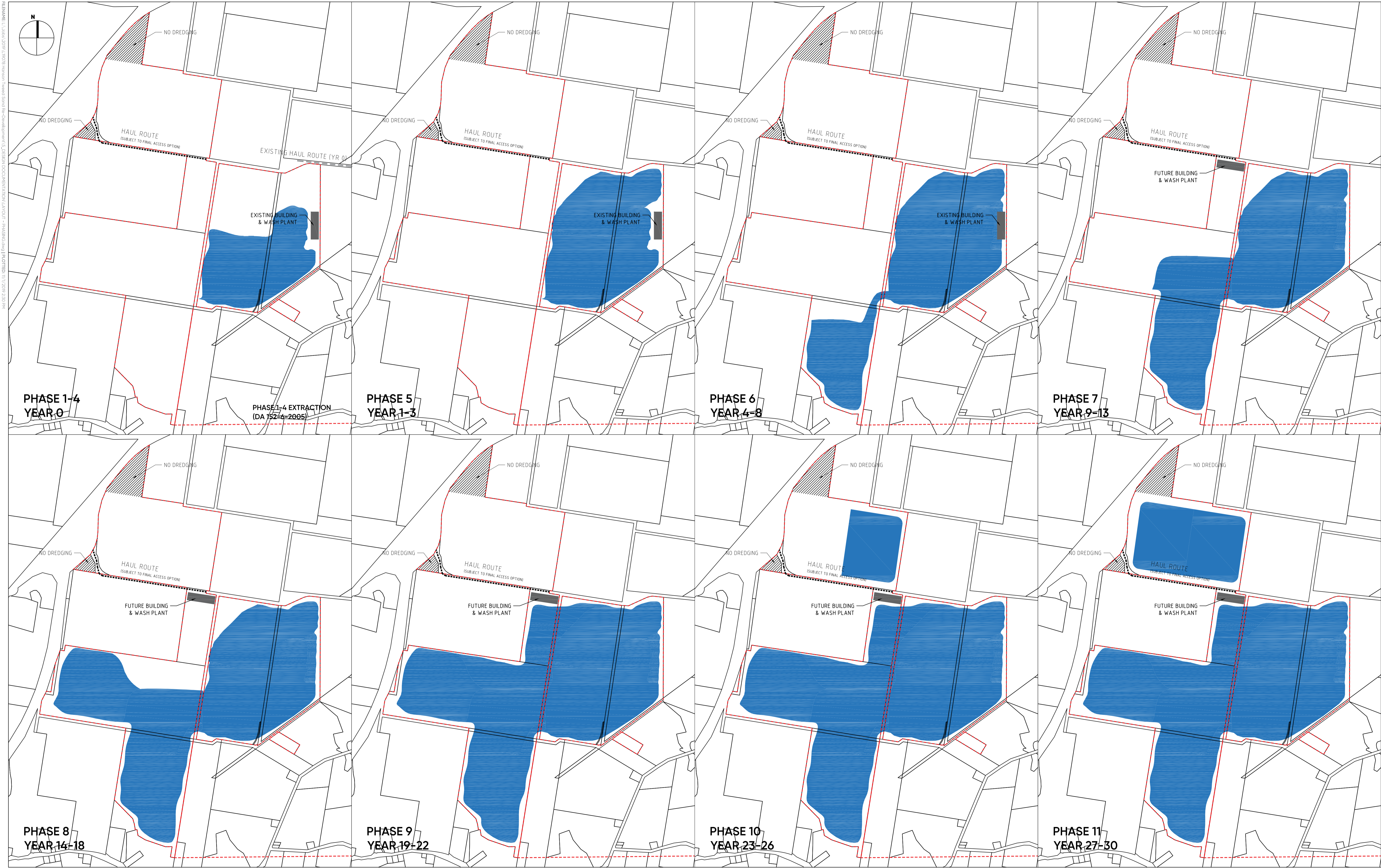
**GOLD COAST**

1638 TWEED STREET, BURLEIGH HEADS QLD 4220  
PO BOX 3805, BURLEIGH TOWN QLD 4220

**GLADSTONE**

2/172 GOONDOON ST, GLADSTONE, QLD 4680  
PO BOX 5332, GLADSTONE QLD 4680 | PH 07 4972 3831

ADMIN@ZONEPLANNING.COM.AU



FILENAME: L:\Jobs\2019\107018 Hanson Tweed Sand Re-Development\3. DESIGN DOCUMENTATION\LAOUI - PHASING.dwg PLOTTED: 11/1/2019 2:50 PM

PROJECT TITLE  
**HANSON TWEED SAND PLANT**  
PHASE 5-11  
DRAWING TITLE  
CONCEPT DEVELOPMENT PHASING

REV	DESCRIPTION	DATE	DRAWN	DESIGN	CHECK	APPROVED
-	-	-	-	-	-	-

ISSUE:	PRELIMINARY	CLIENT:	HANSON CONSTRUCTION MATERIALS PTY LTD
BASE PROVIDED BY:	SIXMAPS DCDB	MANAGER:	LANCE NEWLEY

COPYRIGHT Zone Planning Group 2018. This document and the information are solely for the use of the authorised recipient and this document may not be used, copied or reproduced in whole or part for any purpose other than that for which it was supplied by Zone Planning Group 2018. Zone Planning Group makes no representation, undertakes no duty and accepts no responsibility to any third party who may use or rely upon this document or the information.



Planning Group





ENGINEERING SOLUTIONS



HEIDELBERGCEMENT Group

**ZONE PLANNING GROUP**

**GOLD COAST**  
1638 Tweed Street, Burleigh Heads QLD 4220  
PO Box 3805, Burleigh Town QLD 4220

**GLADSTONE**  
2/172 Goondoon St, Gladstone, QLD 4680  
PO Box 5332, Gladstone QLD 4680  
zonelandscape.com.au | 07 55622303

JOB / DRAWING NO:  
**Z19163- 104**

SHEET NO.  
**SHEET 01 OF 01**