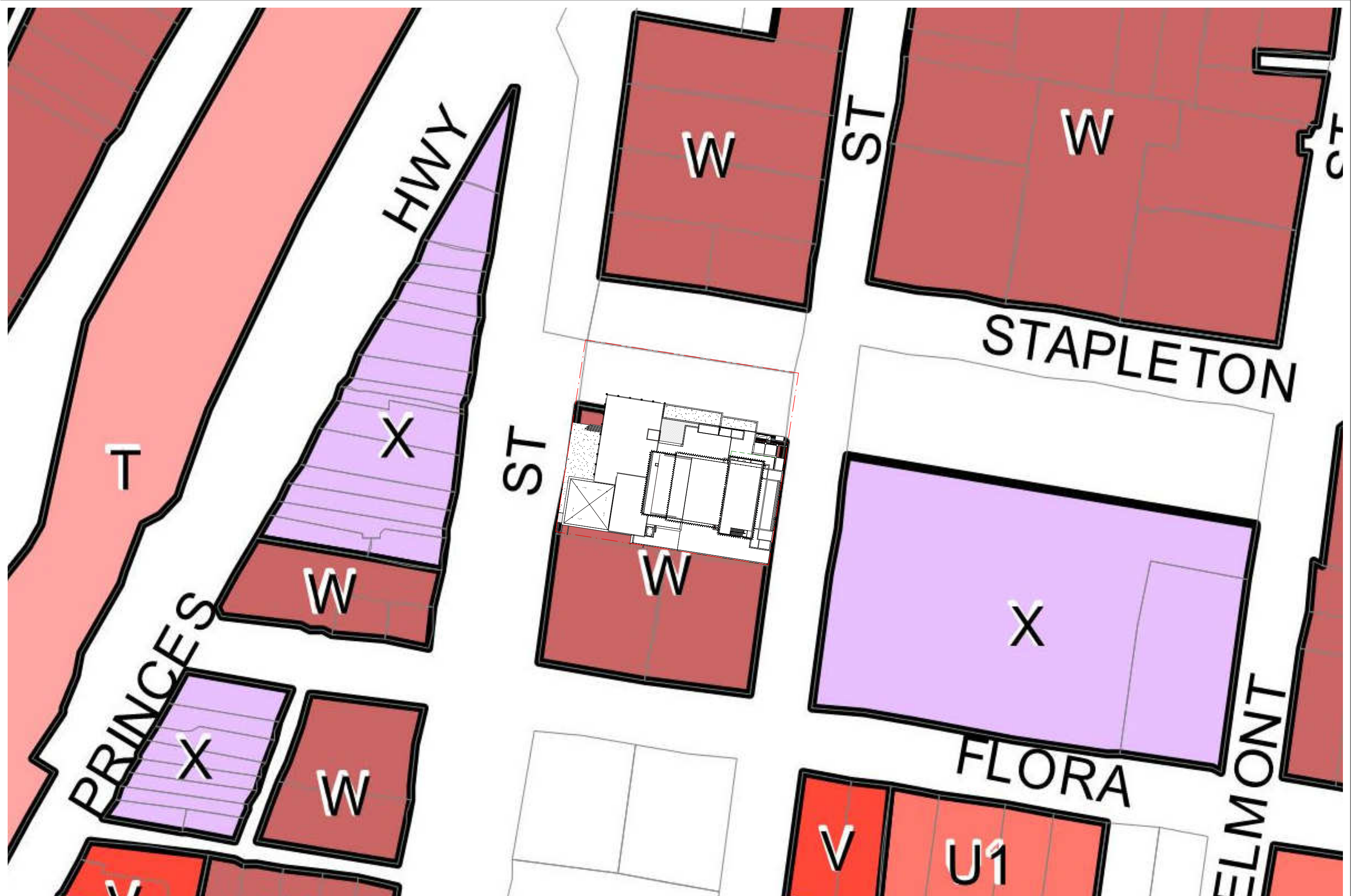
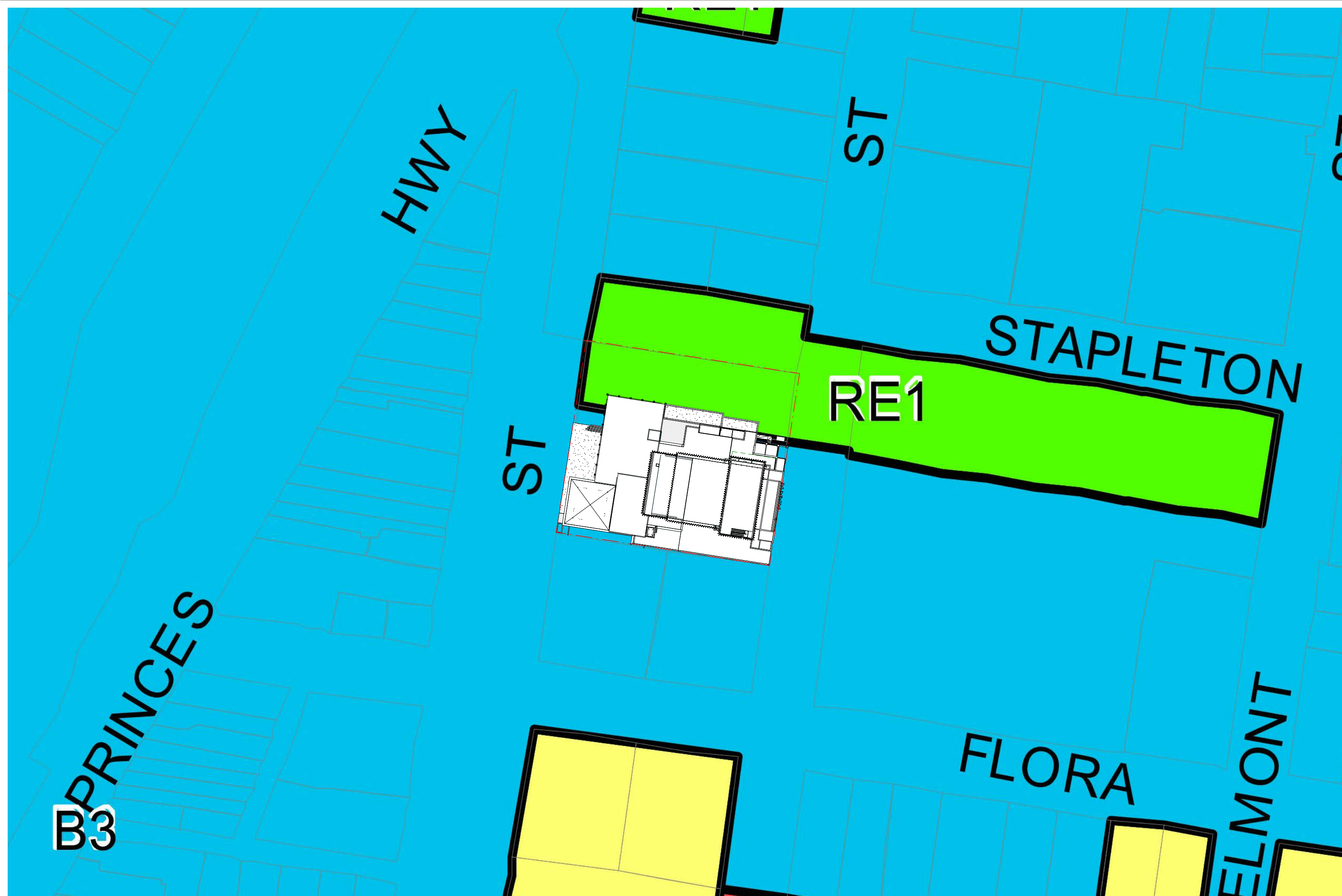


1 Section B-B
1 : 100



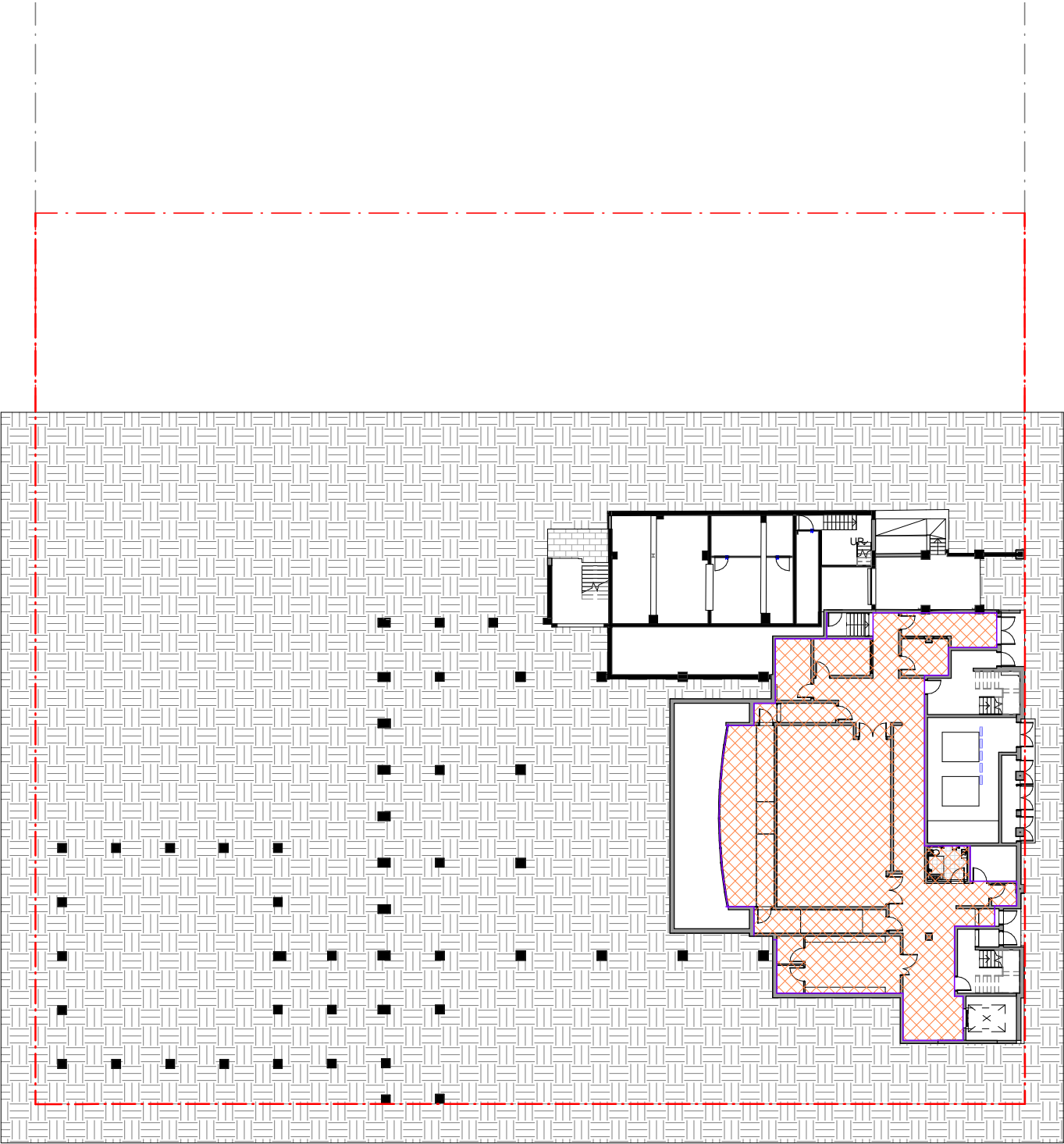


Area Schedule (FSR)	
Level	Area
Basement Level	359 m²
Ground Level	1850 m²
Level 1	1407 m²
Level 2	814 m²
Level 3	84 m²
Grand total	4513 m²

☒ Measured FSR Area

Gross Floor Area means the sum of the floor area of each floor of a building measured from the internal face of external walls, or from the internal face of walls separating the building from any other building, measured at a height of 1.4 metres above the floor, and includes:

- (a) the area of a mezzanine, and
- (b) habitable rooms in a basement or an attic, and
- (c) any shop, auditorium, cinema, and the like, in a basement or attic, but excludes:
- (d) any area for common vertical circulation, such as lifts and stairs, and
- (e) any basement:
- (i) storage, and
- (ii) vehicular access, loading areas, garbage and services, and
- (f) plant rooms, lift towers and other areas used exclusively for mechanical services or ducting, and
- (g) car parking to meet any requirements of the consent authority (including access to that car parking), and
- (h) any space used for the loading or unloading of goods (including access to it), and
- (i) terraces and balconies with outer walls less than 1.4 metres high, and
- (j) voids above a floor at the level of a storey or storey above.

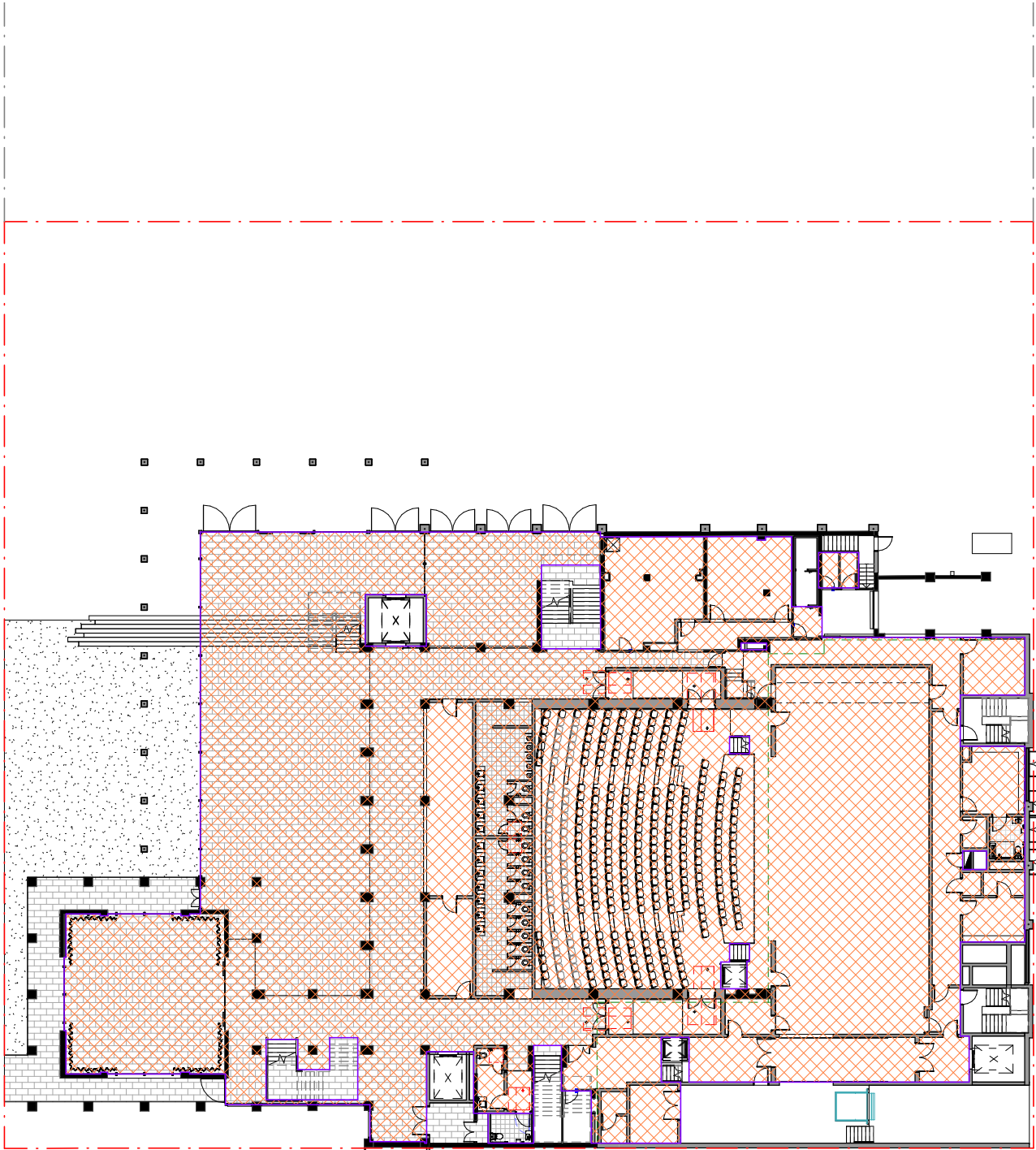


Area Schedule (FSR)	
Level	Area
Basement Level	359 m²
Ground Level	1850 m²
Level 1	1407 m²
Level 2	814 m²
Level 3	84 m²
Grand total	4513 m²

☑ Measured FSR Area

Gross Floor Area means the sum of the floor area of each floor of a building measured from the internal face of external walls, or from the internal face of walls separating the building from any other building, measured at a height of 1.4 metres above the floor, and includes:

- (a) the area of a mezzanine, and
- (b) habitable rooms in a basement or an attic, and
- (c) any shop, auditorium, cinema, and the like, in a basement or attic, but excludes:
- (d) any area for common vertical circulation, such as lifts and stairs, and
- (e) any basement:
- (i) storage, and
- (ii) vehicular access, loading areas, garbage and services, and
- (f) plant rooms, lift towers and other areas used exclusively for mechanical services or ducting, and
- (g) car parking to meet any requirements of the consent authority (including access to that car parking), and
- (h) any space used for the loading or unloading of goods (including access to it), and
- (i) terraces and balconies with outer walls less than 1.4 metres high, and
- (j) voids above a floor at the level of a storey or storey above.

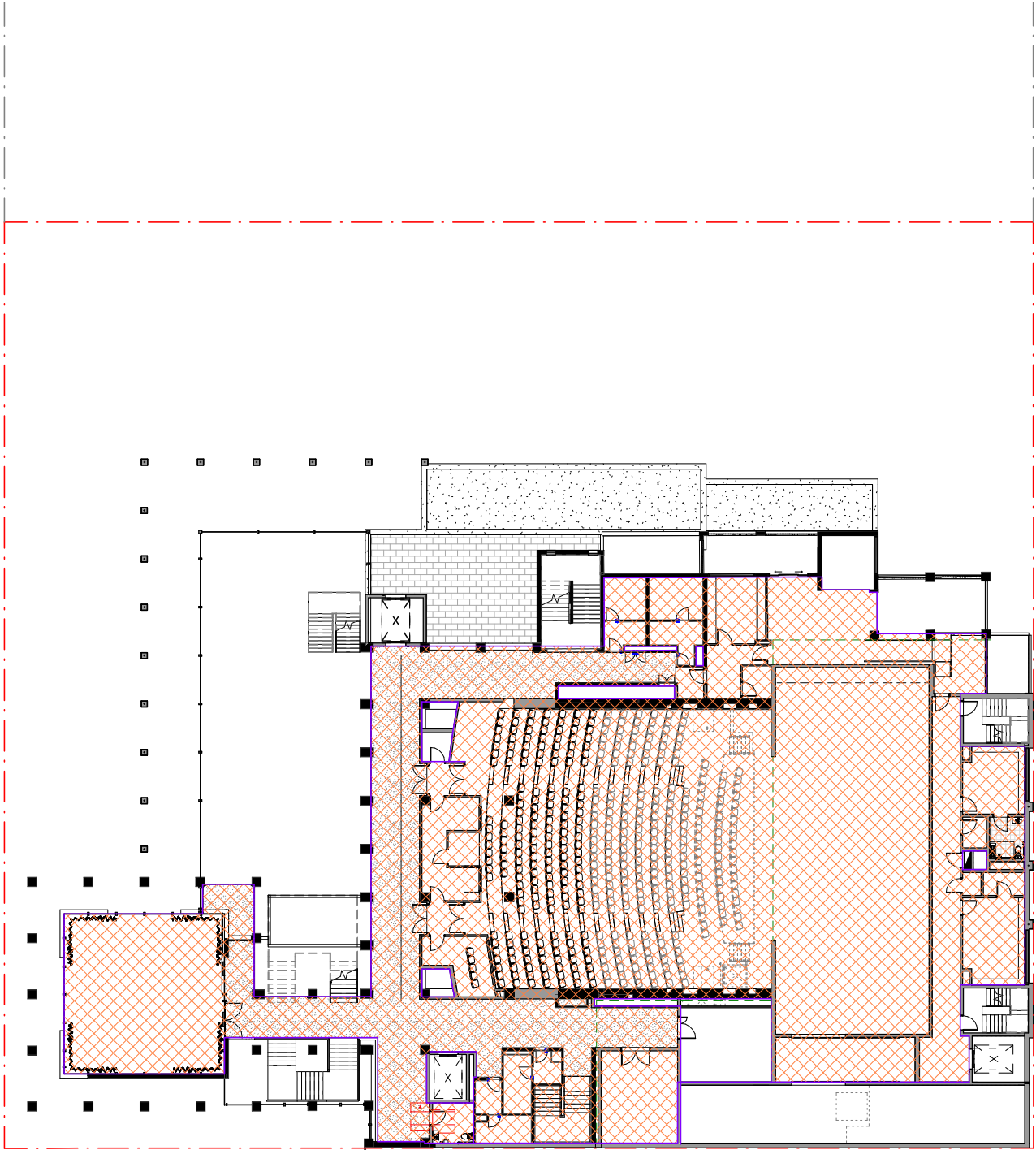


Area Schedule (FSR)	
Level	Area
Basement Level	359 m²
Ground Level	1850 m²
Level 1	1407 m²
Level 2	814 m²
Level 3	84 m²
Grand total	4513 m²

☒ Measured FSR Area

Gross Floor Area means the sum of the floor area of each floor of a building measured from the internal face of external walls, or from the internal face of walls separating the building from any other building, measured at a height of 1.4 metres above the floor, and includes:

- (a) the area of a mezzanine, and
- (b) habitable rooms in a basement or an attic, and
- (c) any shop, auditorium, cinema, and the like, in a basement or attic, but excludes:
- (d) any area for common vertical circulation, such as lifts and stairs, and
- (e) any basement:
- (i) storage, and
- (ii) vehicular access, loading areas, garbage and services, and
- (f) plant rooms, lift towers and other areas used exclusively for mechanical services or ducting, and
- (g) car parking to meet any requirements of the consent authority (including access to that car parking), and
- (h) any space used for the loading or unloading of goods (including access to it), and
- (i) terraces and balconies with outer walls less than 1.4 metres high, and
- (j) voids above a floor at the level of a storey or storey above.

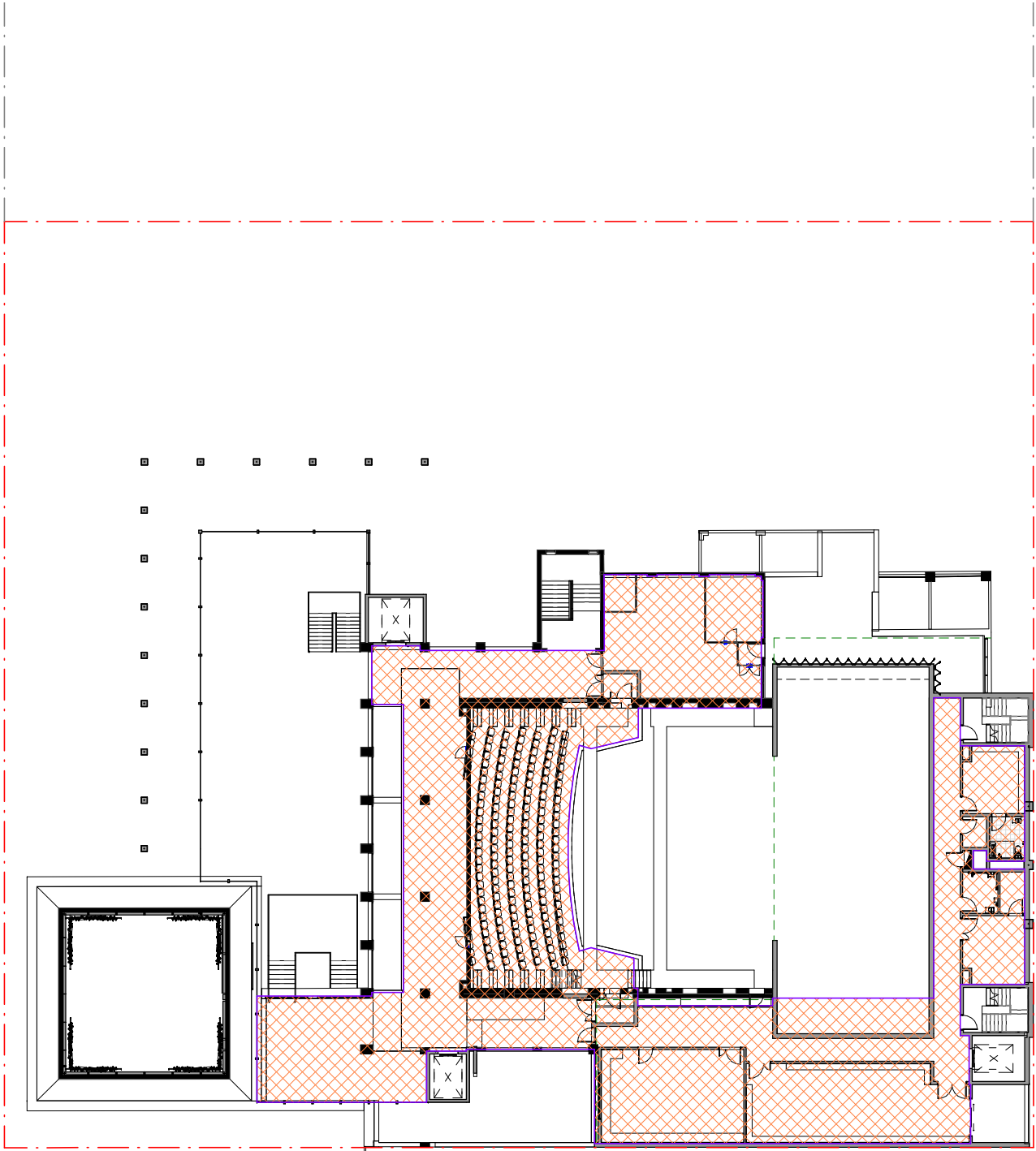


Area Schedule (FSR)	
Level	Area
Basement Level	359 m²
Ground Level	1850 m²
Level 1	1407 m²
Level 2	814 m²
Level 3	84 m²
Grand total	4513 m²

☑ Measured FSR Area

Gross Floor Area means the sum of the floor area of each floor of a building measured from the internal face of external walls, or from the internal face of walls separating the building from any other building, measured at a height of 1.4 metres above the floor, and includes:

- (a) the area of a mezzanine, and
- (b) habitable rooms in a basement or an attic, and
- (c) any shop, auditorium, cinema, and the like, in a basement or attic, but excludes:
- (d) any area for common vertical circulation, such as lifts and stairs, and
- (e) any basement:
- (i) storage, and
- (ii) vehicular access, loading areas, garbage and services, and
- (f) plant rooms, lift towers and other areas used exclusively for mechanical services or ducting, and
- (g) car parking to meet any requirements of the consent authority (including access to that car parking), and
- (h) any space used for the loading or unloading of goods (including access to it), and
- (i) terraces and balconies with outer walls less than 1.4 metres high, and
- (j) voids above a floor at the level of a storey or storey above.



Area Schedule (FSR)	
Level	Area
Basement Level	359 m²
Ground Level	1850 m²
Level 1	1407 m²
Level 2	814 m²
Level 3	84 m²
Grand total	4513 m²

☒ Measured FSR Area

Gross Floor Area means the sum of the floor area of each floor of a building measured from the internal face of external walls, or from the internal face of walls separating the building from any other building, measured at a height of 1.4 metres above the floor, and includes:

- (a) the area of a mezzanine, and
- (b) habitable rooms in a basement or an attic, and
- (c) any shop, auditorium, cinema, and the like, in a basement or attic, but excludes:
- (d) any area for common vertical circulation, such as lifts and stairs, and
- (e) any basement:
- (i) storage, and
- (ii) vehicular access, loading areas, garbage and services, and
- (f) plant rooms, lift towers and other areas used exclusively for mechanical services or ducting, and
- (g) car parking to meet any requirements of the consent authority (including access to that car parking), and
- (h) any space used for the loading or unloading of goods (including access to it), and
- (i) terraces and balconies with outer walls less than 1.4 metres high, and
- (j) voids above a floor at the level of a storey or storey above.

