



28 April 2020

TfNSW Reference: SYD18/01120/04

DPIE Reference: SSD 9483

Department of Planning, Industry and Environment
Locked Bag 5022
PARRAMATTA NSW 2124

Attention: **Navdeep Singh Shergill**

CONSTRUCTION OF NEW EDUCATION BUILDINGS AT THE CHATSWOOD PRIMARY SCHOOL AND CHATSWOOD HIGH SCHOOL – 5-24 CENTENNIAL AVENUE

Dear Sir/Madam,

Reference is made to your correspondence dated 31 March 2020, regarding the abovementioned Application which was referred to Transport for NSW (TfNSW) for comment.

TfNSW has reviewed the submitted application and provides the following comments for the Department's consideration in the determination of this application:

1. TfNSW has previously resumed and dedicated a strip of land as road along the Pacific Highway frontage of the subject property, as shown by grey colour on the attached Aerial – "X". All buildings and structures, together with any improvements integral to the future use of the site are to be wholly within the freehold property (unlimited in height or depth), along the Pacific Highway boundary.
2. The Chatswood Public School has alternative vehicular access via the local road network, and as such the proposed construction vehicular access and proposed emergency and service vehicular access on the Pacific Highway is not supported on road safety and efficiency grounds.
3. There are existing pedestrian safety concerns at the Victoria Avenue and Pacific Highway intersection with students not using the pedestrian bridge provided in close proximity. The Traffic Impact Assessment refers to a new pedestrian access for the Chatswood Primary School and it is requested that the applicant considers measures to encourage students to use the pedestrian overbridge instead of the signalized intersection crossing.
4. The submitted swept paths for Jenkins Street should take into account parked vehicles both sides of the road.

5. The Traffic Impact Assessment should not rely on a low 16% survey response for the Chatswood High School travel mode and should use the TfNSW Traffic Generation study rates.
6. A Green Travel Plan (GTP) framework has been prepared associated with the transport assessment. The following matters should be considered for inclusion or amendment to this GTP framework:
 - Clarification of the responsible party (i.e the school, School Infrastructure NSW, or both) for the delivery of each action in the GTP and advise when each action will be delivered.
 - Include the number of staff and hours of operation including school times, before and after school care, extra-curricular activities and staff hours;
 - Include promotion of the health and wellbeing benefits of active travel to the site as an action;
 - Identify and promote arrangements for end of trip facilities including the location and quantum of bike parking, and include this information in the Travel Access Guide (TAG);
 - Consider promotion of appropriate safety information relevant to teachers, students and parents/guardians in relation to travelling to school, such as the NSW Government's 'Safety Town' website and resources;
 - GTP to be reviewed and amended annually by a transport coordinator appointed by the school to reflect increased enrolments and infrastructure. Information as to how this is managed is required;
 - Include information about the end of trip facilities that are proposed to support a high active travel mode share in the development proposal;
 - Consider earlier or staggered hours of operation to spread demand on the transport network;
 - The proponent should engage with relevant decision making roles (e.g. the Principal) at each school and seek their endorsement of the content of the Travel Plan; and
 - The proponent should engage with the Travel Demand Management team at Transport for NSW to discuss proposed approach to implementing the Travel Plan

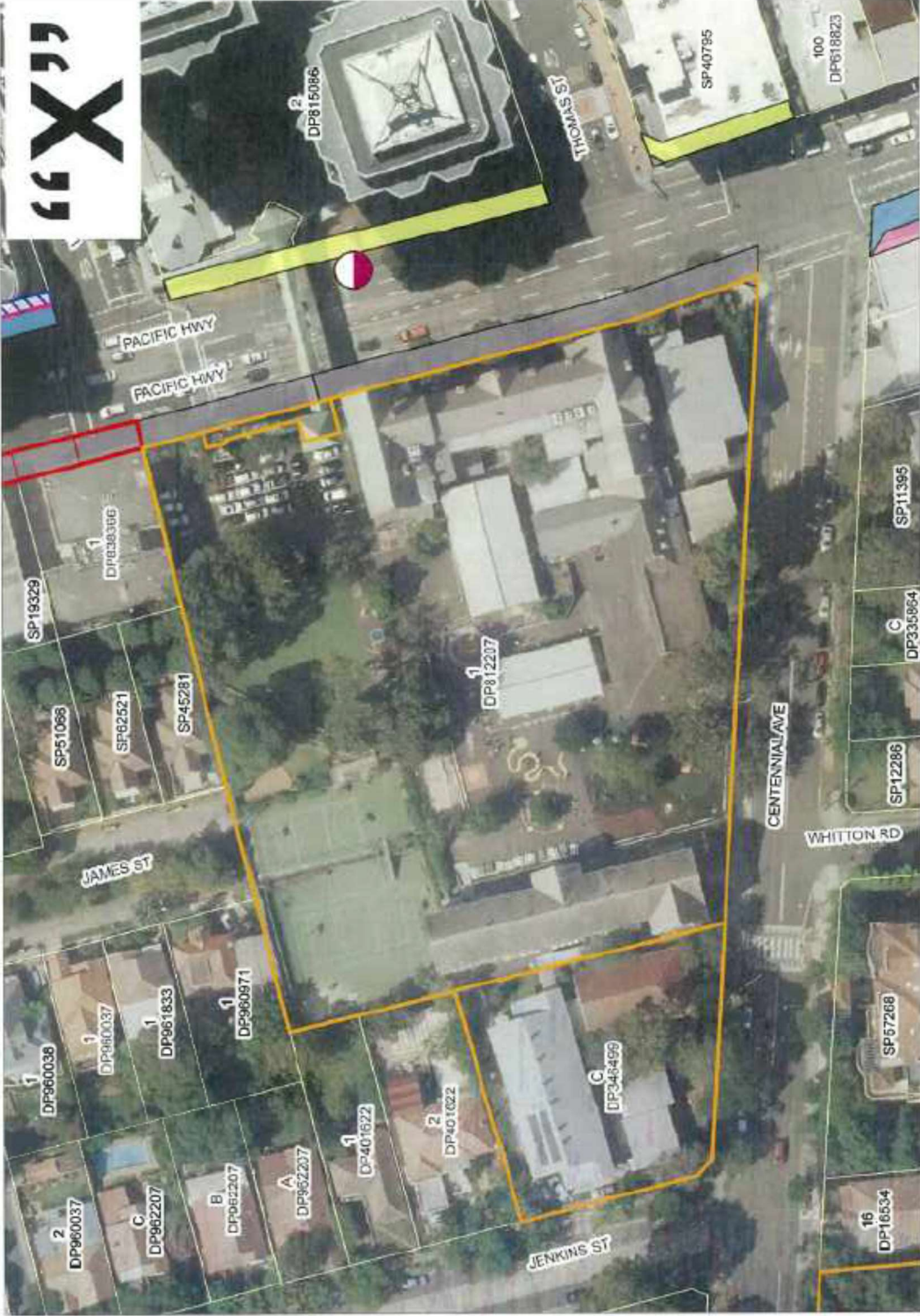
TfNSW requests that prior to the issue of an Occupation Certificate, the applicant should prepare a comprehensive Travel Plan (or amend and expand the existing GTP) taking into account the GTP initiatives outlined in the framework GTP to assist with increasing the proportion of trips made by walking and cycling.

If you have any further questions please direct attention to Malgy Coman on 8849 2413 or email development.sydney@rms.nsw.gov.au. I hope this has been of assistance.

Yours sincerely,

A handwritten signature in black ink, appearing to read 'Pahee Rathan', written in a cursive style.

Pahee Rathan
Senior Land Use Assessment Coordinator



“X”

DP815086
2

THOMAS ST

SP40795

100
DP618823

PACIFIC HWY
PACIFIC HWY

SP19329

DP628366
1

SP51068

SP62521

SP45281

DP812207
1

SP11395

C
DP335964

JAMES ST

DP960038
1

DP960037
1

DP961833
1

DP960971
1

DP960037
2

DP962207
C

DP962207
B

DP962207
A

DP401622
1

DP401022
2

DP348499
C

CENTENNIAL AVE

WHITTON RD

SP67268

JENKINS ST

16
DP16534