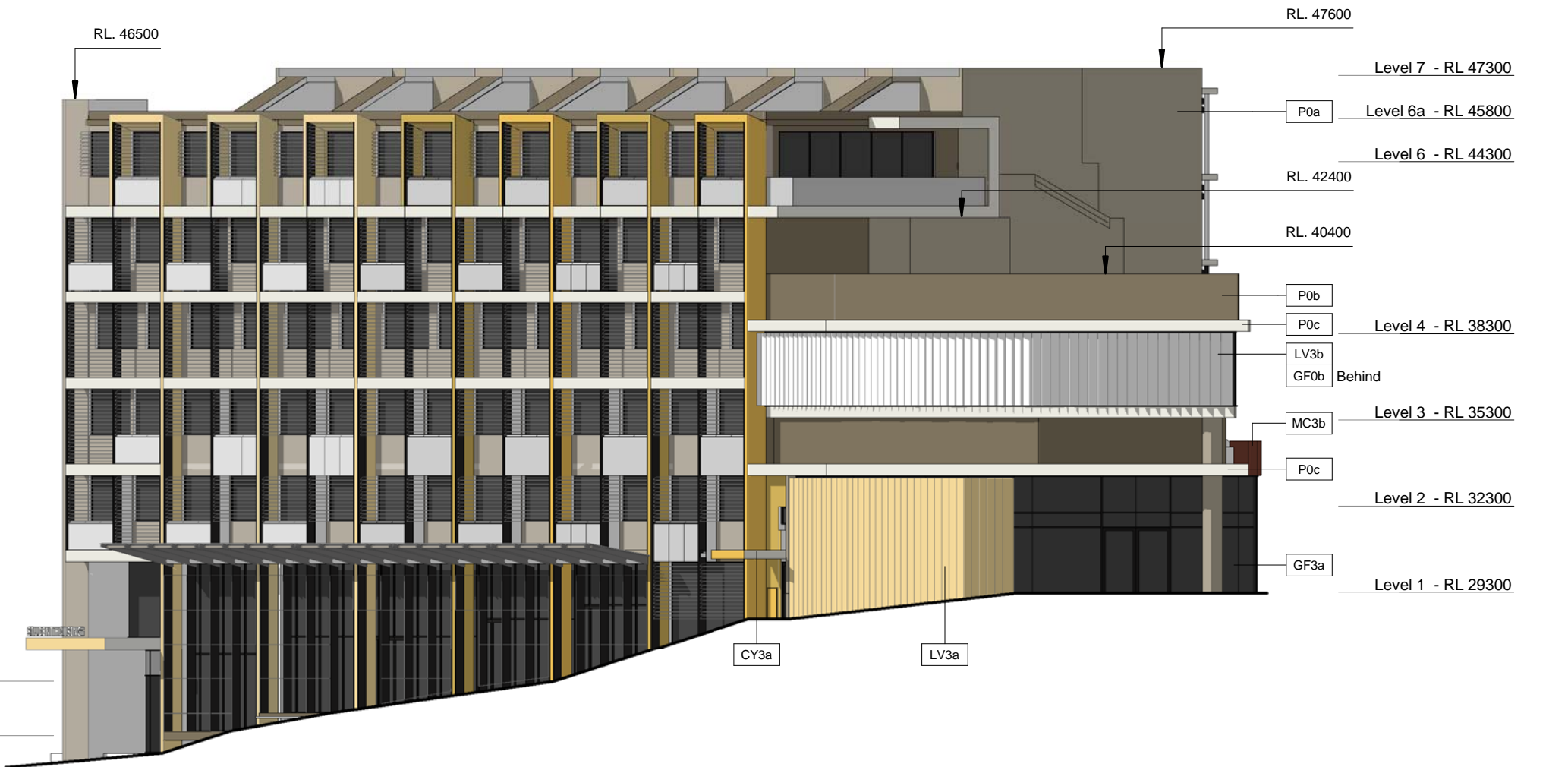
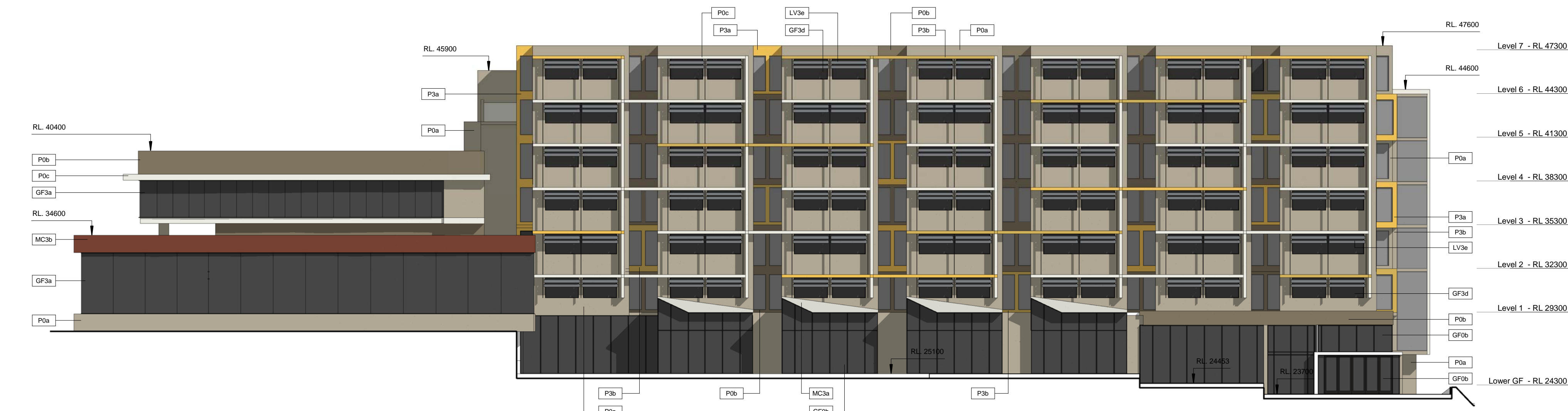




1.0 Eveleigh Street Elevation
1 : 200



1.1 Pemulwuy Place Elevation
1 : 200



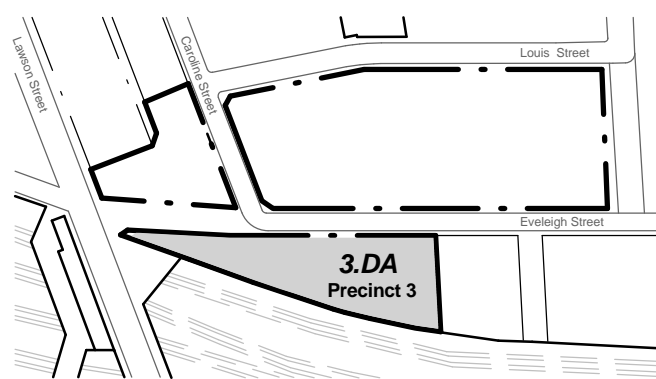
1.2 Railway Corridor Elevation
1 : 200



1.3 North Elevation
1 : 200

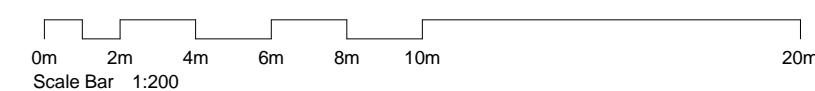
Abbreviations / Finishes Schedule

ART	Community Art Work Elements	LV3c	Prefinished Adjustable Horizontal Elliptical Louvers To West Facing Student Housing Units Along Eveleigh Street - Powdercoat Finish Colour To Match Dulux 'Grey Silt'
CY	Canopy Types	LV3d	Prefinished Adjustable Horizontal Elliptical Louvers To West Facing Student Housing Units Along Eveleigh Street - Powdercoat Finish Colour To Match Dulux 'Silver Grey Matt'
CY3a	Framed Canopy With Prefinished Profiled Metal Cladding To Eveleigh Street Commercial / Gallery Lobby Entry	LV3e	Prefinished Horizontal Elliptical Louvers To East Facing Student Housing Units Along Railway Corridor - Powdercoat Finish Colour To Match Dulux 'Duratex - Luna Eclipse 87734 Satin
CY3b	Grade 'A' Safety Glass Panel Canopy With Fit Pattern On Prefinished Steel Outriggers Over Commercial Entries To Eveleigh St	MC	External Cladding And Roof Lining Types
CY3c	Framed Canopy With Prefinished Profiled Metal Cladding To Eveleigh Street Student Housing Entry	MC3a	Prefinished Lysaght KlipLok 700 Roofing Sheets (OE) - Finished In Colourbond 'Surfmist' With Box Gutter Finish To Match To Commercial Roofs
FE	Fire Exit - Point Of Discharge To Open Space	MC3b	Corten Steel Cladding Fixed On Proprietary Steel Frame System To Art Gallery Facade
FT	Fence / Screen Types	NAU	Nominated Adaptable Unit To Comply With AS 4299
FT3a	1800mm High Privacy Screens Between Commercial / Student Housing Common Open Areas	P	Applied Coatings (Refer Also to Drawing ODA900)
GF	Glass Framing Systems (All Frames To Comply With AS2047)	P0a	Base Building Colour To Match - Dulux / Linseed / P15.B3
GF0b	Framed Curtain Wall System With Proprietary Door and window Opening Systems With Black Powdercoat Finish (Commercial - Precincts P2 / P3)	P0b	Secondary Feature 'Face' Colour To Match - Dulux / Swampy / P15.B6
GF3a	Frameless Glazing Curtain Wall System To Main Gallery Facade	P0c	Slab Edge and Blade 'Cut' Colour To Match - Dulux / Whisper White / PCWF674161
GF3b	Frameless Glazing Curtain Wall System To Secondary Elevation Of Commercial Entries Along Eveleigh Street	P3a	Feature #1 Colour To Match - Dulux / Corn Bread / P14.H6
GF3c	Prefinished Metal Framed Windows Student Housing With Black Powdercoat Finish	P3b	Feature #2 Colour To Match - Dulux / Warm Wollen / P16.F6
GF3d	Prefinished Metal Framed Awning Windows Student Housing Facing Rail Corridor With Black Powdercoat Finish	TS	Tile And Paver Types (Slip Resistance Grade Of Tiles To Be Selected To Relevant To Use And Exposure)
GF3e	Prefinished Metal Framed Sliding Door Sets To Student Housing With Black Powdercoat Finish	TS0a	Refer To Landscape Architects Details For Finishes To Public Domain Areas
GL	Glazing Types (To Comply With AS1288)	TS2d	300x300mm Tiles Laid To Falls In Retail / Commercial W's
HT	Handrail/Balustrade Types (All Glazing Components To AS1288)	TS3c	600x600mm External Pavers To Student Housing Entry Area
HT3c	Prefinished Steel Framed Balustrades with Extruded Aluminum Handrail And Glazed Baluster Panels With Fit Pattern To Student Housing Balconies	TS3d	300x300mm Tiles Laid To Falls In Shared Laundry and W's Of Student Housing Common Area
LV	Louvre Types	TS3e	300x600mm Direct Stick Floor Tiles To Kitchens In Student Housing Units
LV3a	Prefinished Fixed Perforated Louvre Panels Full Height To Ground Floor Gallery Elevation - Powdercoat Finish Colour To Match P3a	TS3f	300x300mm Tiles Laid To Falls In Bath Rooms To Student Housing Units
LV3b	Prefinished Fixed Perforated Louvre Panels Full Height To Level 1 Gallery Elevation Finished As Clear Anodised	WP	Waterproofing Systems
		WPOa	Sheet Membrane To Flat Roof Areas (Generally Screed/Membrane/Insulation/Ballast)



CNR PARRAMATTA RD & JOHNSTON ST - PO BOX 254 - ANNANDALE - NSW 2038 - T.02 9517 2822 F.02 9517 2833
STEPHEN J. NORDON REGISTRATION No. NSW - 4704 GRAHAM P. JAGO REGISTRATION No. NSW - 4926

Development Application		
Rev	Description	Date
A	Preliminary DA Issue For Review	11.07.11
B	Preliminary DA Issue For Review	20.07.11
C	Development Application Issue	14.12.11
D	DcP Amendments	24.08.12



Precinct 3 - Pemulwuy Mixed Use Development, REDFERN

J:\DEI00210 Pemulwuy Project\4 NJA Documentation\5 CAD\3 DA\01 Model\01 Current\DEI00210_3DA Precinct 3_120417.rvt

Elevations

JOB No.	DEI00210
DATE	October 2010
SCALE	A1 @ As indicated
DWG No.	3DA300 D