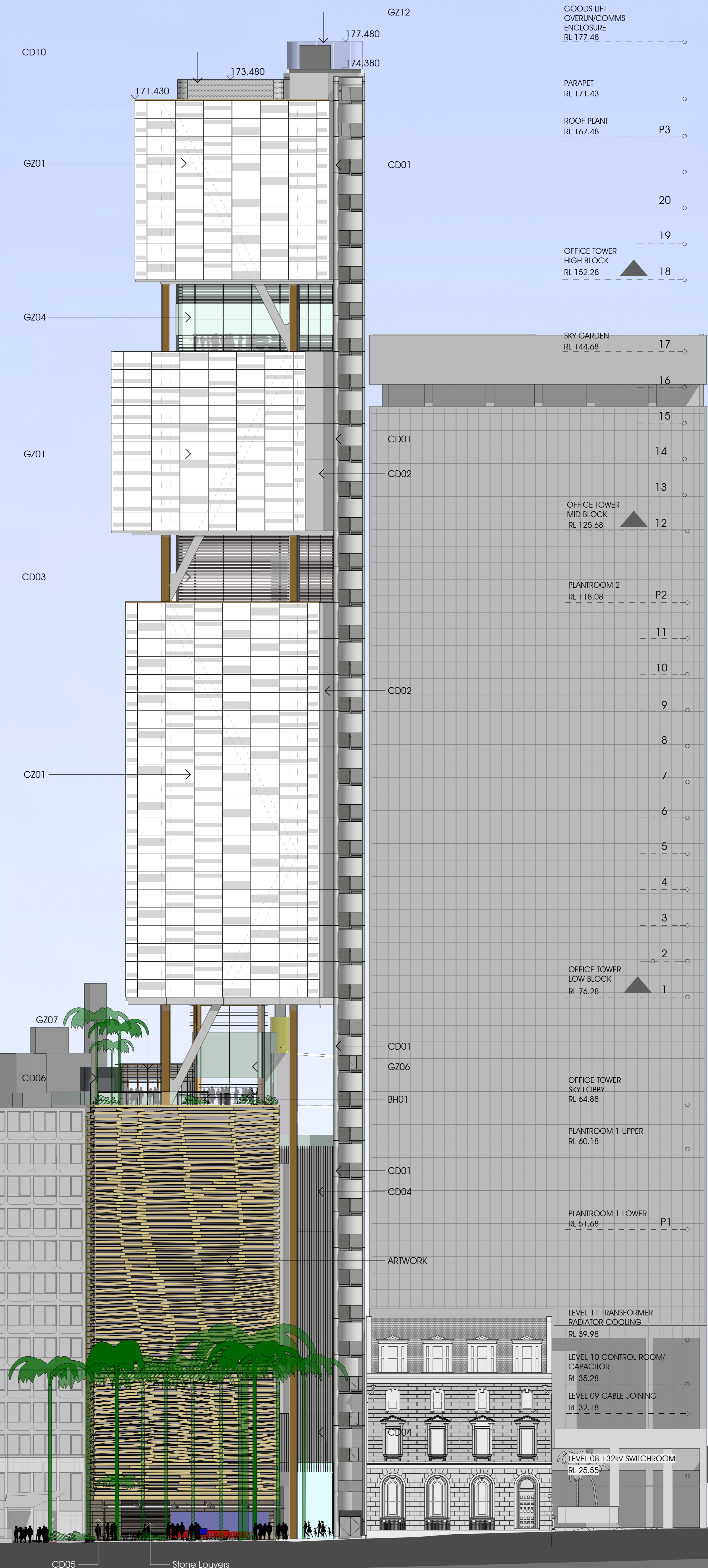


City East Zone  
Substation Area  
Architects for this work:  
Kann Finch Group

Vertical Transportation

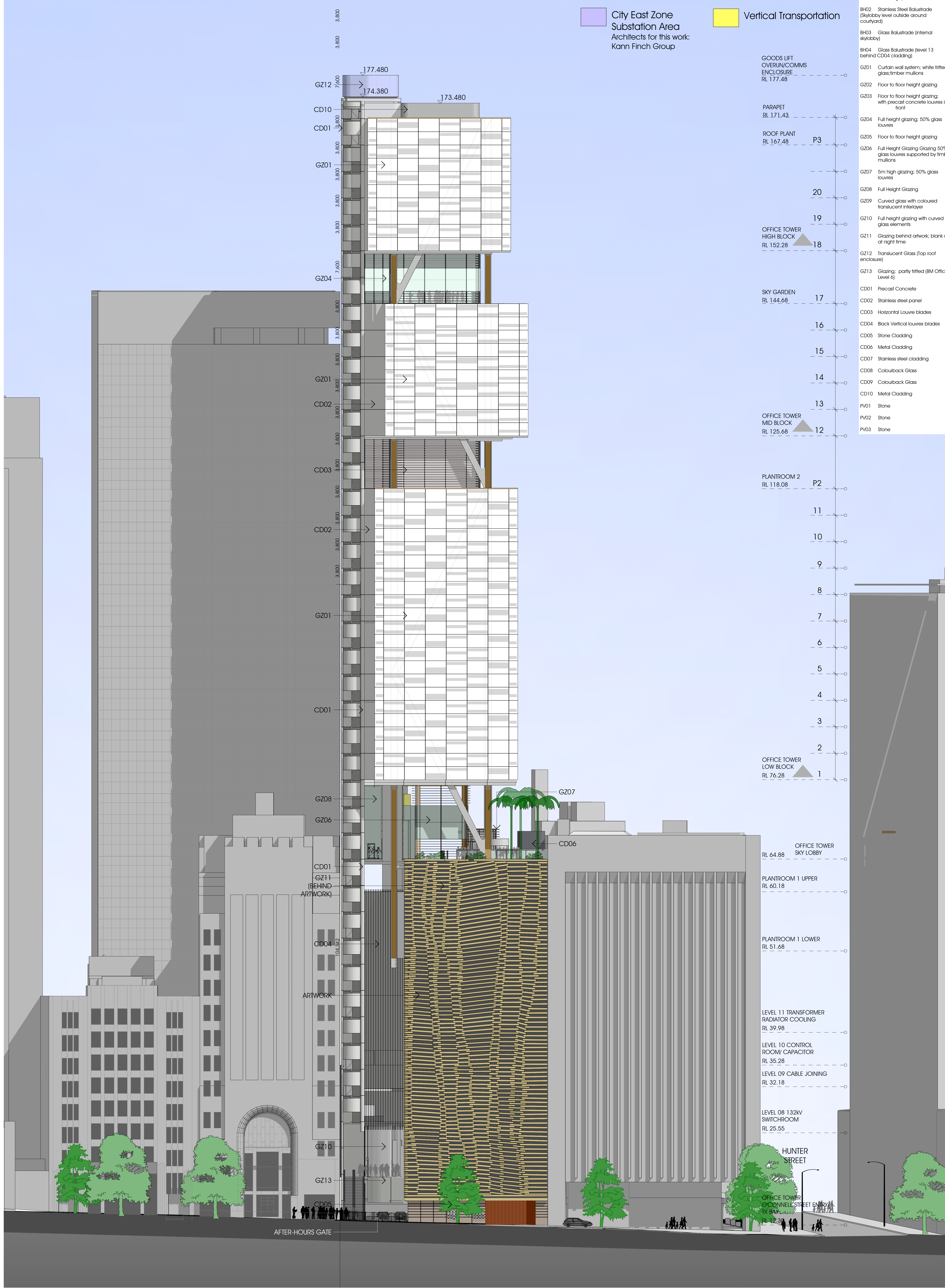
- BH01 Glass Balustrade (Skylobby level at substation edge)
- BH02 Stainless Steel Balustrade (Skylobby level outside around courtyard)
- BH03 Glass Balustrade (internal skylobby)
- BH04 Glass Balustrade (level 13 behind CD04 cladding)
- GZ01 Curtain wall system; white fitted glass; timber mullions
- GZ02 Floor to floor height glazing
- GZ03 Floor to floor height glazing; with precast concrete louvres in front
- GZ04 Full height glazing; 50% glass louvres
- GZ05 Floor to floor height glazing
- GZ06 Full Height Glazing Glazing 50% glass louvres supported by timber mullions
- GZ07 5m high glazing; 50% glass louvres
- GZ08 Full Height Glazing
- GZ09 Curved glass with coloured translucent interlayer
- GZ10 Full height glazing with curved glass elements
- GZ11 Glazing behind artwork; blank out at night time
- GZ12 Translucent Glass (Top roof enclosure)
- GZ13 Glazing; partly fitted (BM Office Level 6)
- CD01 Precast Concrete
- CD02 Stainless steel panel
- CD03 Horizontal Louvre blades
- CD04 Black Vertical louvre blades
- CD05 Stone Cladding
- CD06 Metal Cladding
- CD07 Stainless steel cladding
- CD08 Colourback Glass
- CD09 Colourback Glass
- CD10 Metal Cladding
- PV01 Stone
- PV02 Stone
- PV03 Stone



City East Zone  
Substation Area  
Architects for this work:  
Kann Finch Group

Vertical Transportation

- BH01 Glass Balustrade (Skylobby level at substation edge)
- BH02 Stainless Steel Balustrade (Skylobby level outside around courtyard)
- BH03 Glass Balustrade (internal skylobby)
- BH04 Glass Balustrade (level 13 behind CD04 cladding)
- GZ01 Curtain wall system; white fitted glass; timber mullions
- GZ02 Floor to floor height glazing
- GZ03 Floor to floor height glazing; with precast concrete louvres in front
- GZ04 Full height glazing; 50% glass louvres
- GZ05 Floor to floor height glazing
- GZ06 Full Height Glazing Glazing 50% glass louvres supported by timber mullions
- GZ07 5m High glazing; 50% glass louvres
- GZ08 Full Height Glazing
- GZ09 Curved glass with coloured translucent interlayer
- GZ10 Full height glazing with curved glass elements
- GZ11 Glazing behind artwork; blank out at night time
- GZ12 Translucent Glass (Top roof enclosure)
- GZ13 Glazing; partly fitted (BM Office Level 6)
- CD01 Precast Concrete
- CD02 Stainless steel panel
- CD03 Horizontal Louvre blades
- CD04 Black Vertical louvre blades
- CD05 Stone Cladding
- CD06 Metal Cladding
- CD07 Stainless steel cladding
- CD08 Colourback Glass
- CD09 Colourback Glass
- CD10 Metal Cladding
- PV01 Stone
- PV02 Stone
- PV03 Stone



- GOODS LIFT OVERUN/COMMS ENCLOSURE RL 177.48
- PARAPET RL 171.43
- ROOF PLANT RL 167.48 P3
- OFFICE TOWER HIGH BLOCK RL 152.28 18
- SKY GARDEN RL 144.68 17
- OFFICE TOWER MID BLOCK RL 125.68 12
- PLANTROOM 2 RL 118.08 P2
- OFFICE TOWER LOW BLOCK RL 76.28 1
- OFFICE TOWER SKY LOBBY RL 64.88
- PLANTROOM 1 UPPER RL 60.18
- PLANTROOM 1 LOWER RL 51.68
- LEVEL 11 TRANSFORMER RADIATOR COOLING RL 39.98
- LEVEL 10 CONTROL ROOM/ CAPACITOR RL 35.28
- LEVEL 09 CABLE JOINING RL 32.18
- LEVEL 08 132KV SWITCHROOM RL 25.55