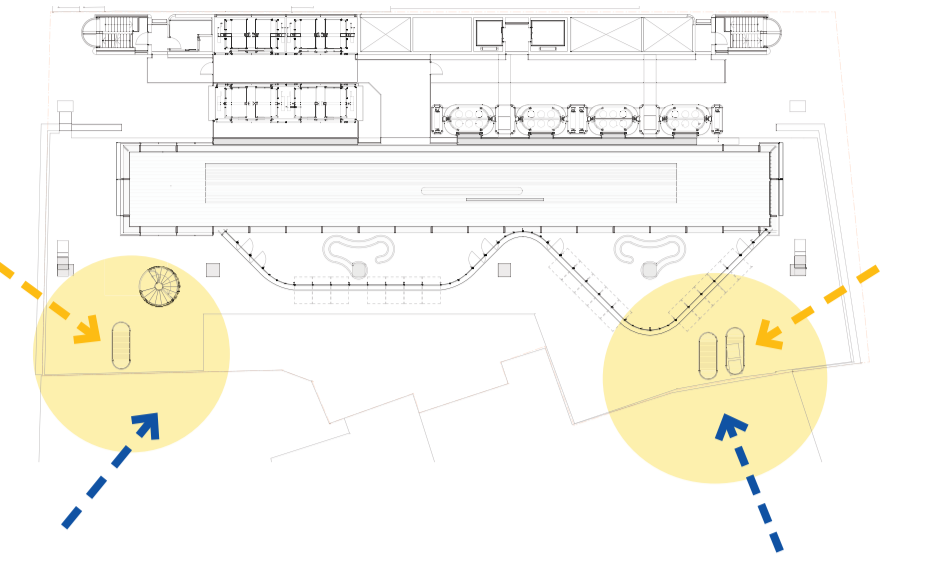
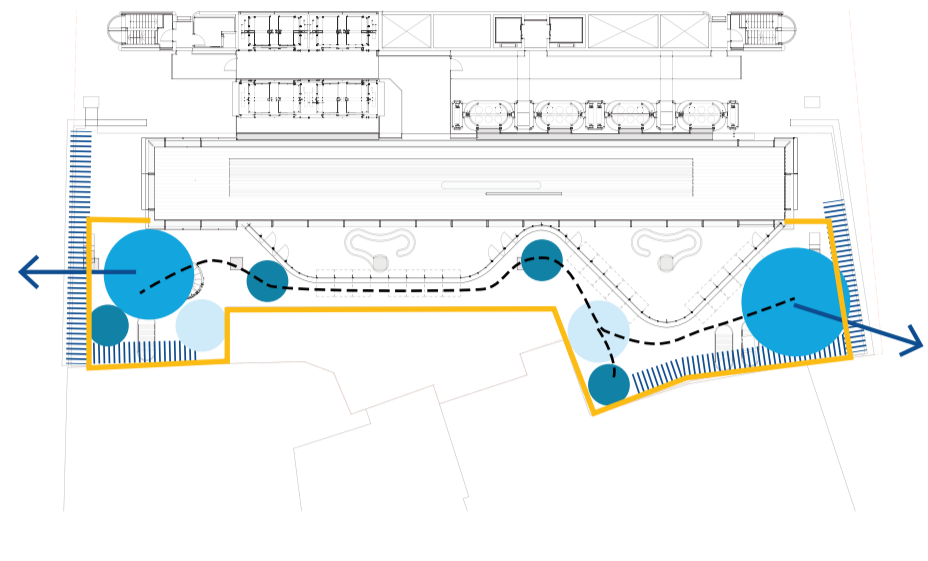


Design Diagrams



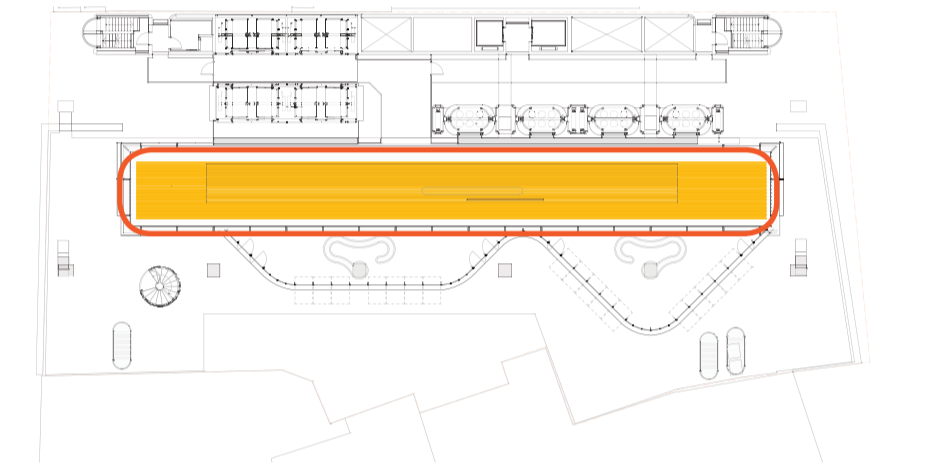
Microclimate

- ← Prevailing winds
- ← Sunlight

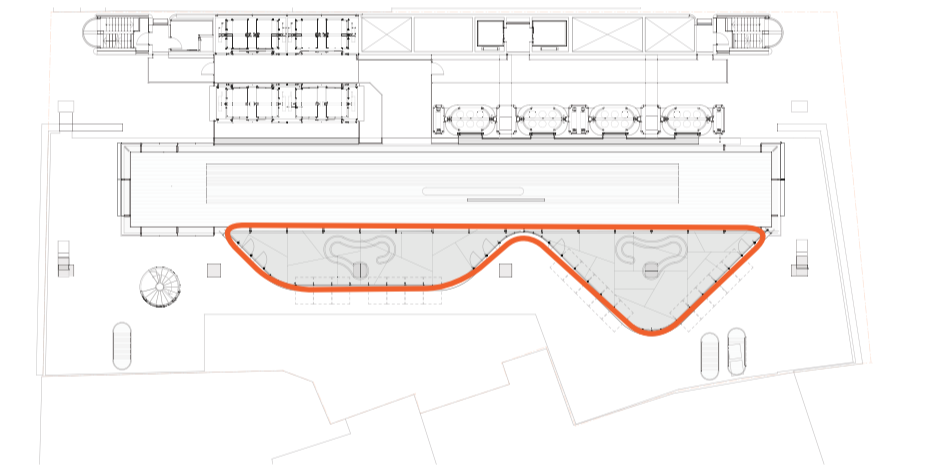


Spatial Hierarchy

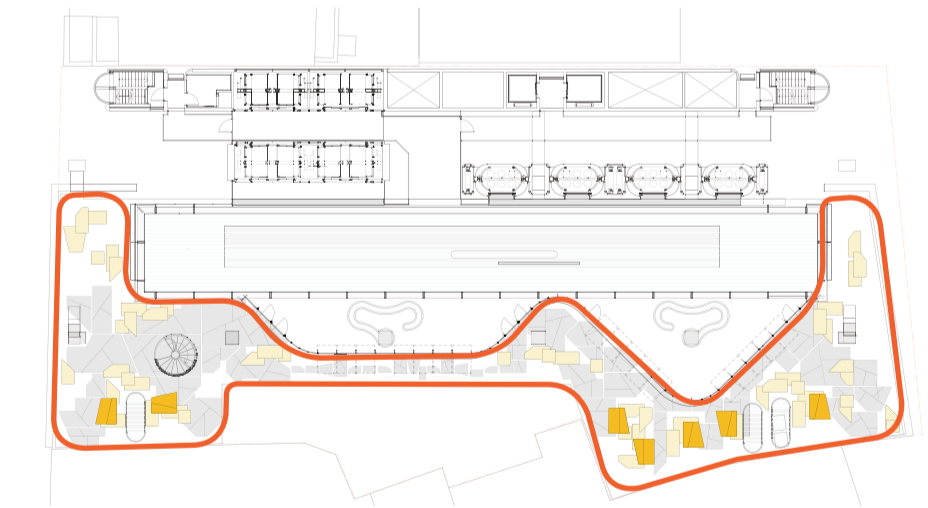
- Primary social space
- Secondary social space
- Tertiary / Small space
- Views
- ||||| Wind amelioration
- - - Connections
- Edge (balustrade)



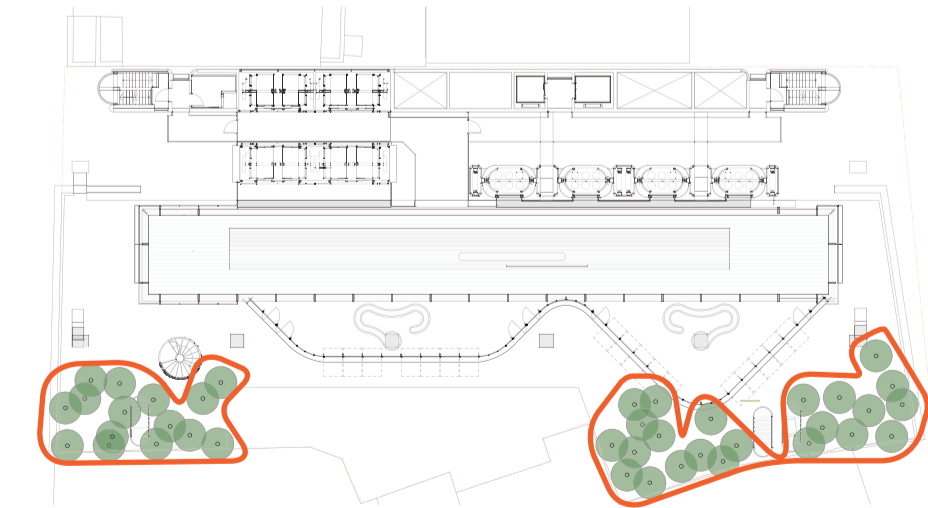
Timber Entry Lobby



Sawcut Slab Bar Area

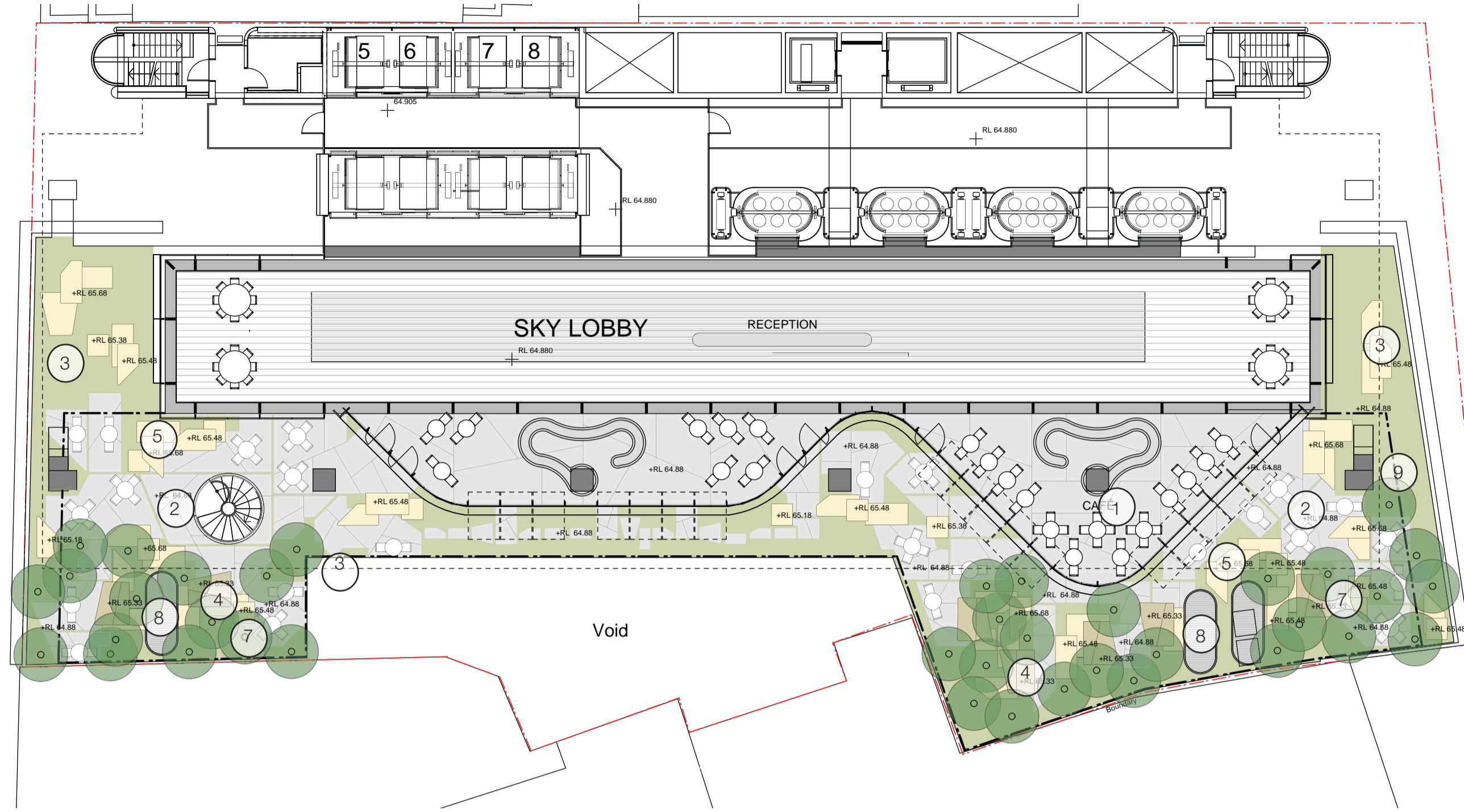


'Sky Bar' Landscape Terrace Seating Zone



Palm Forest

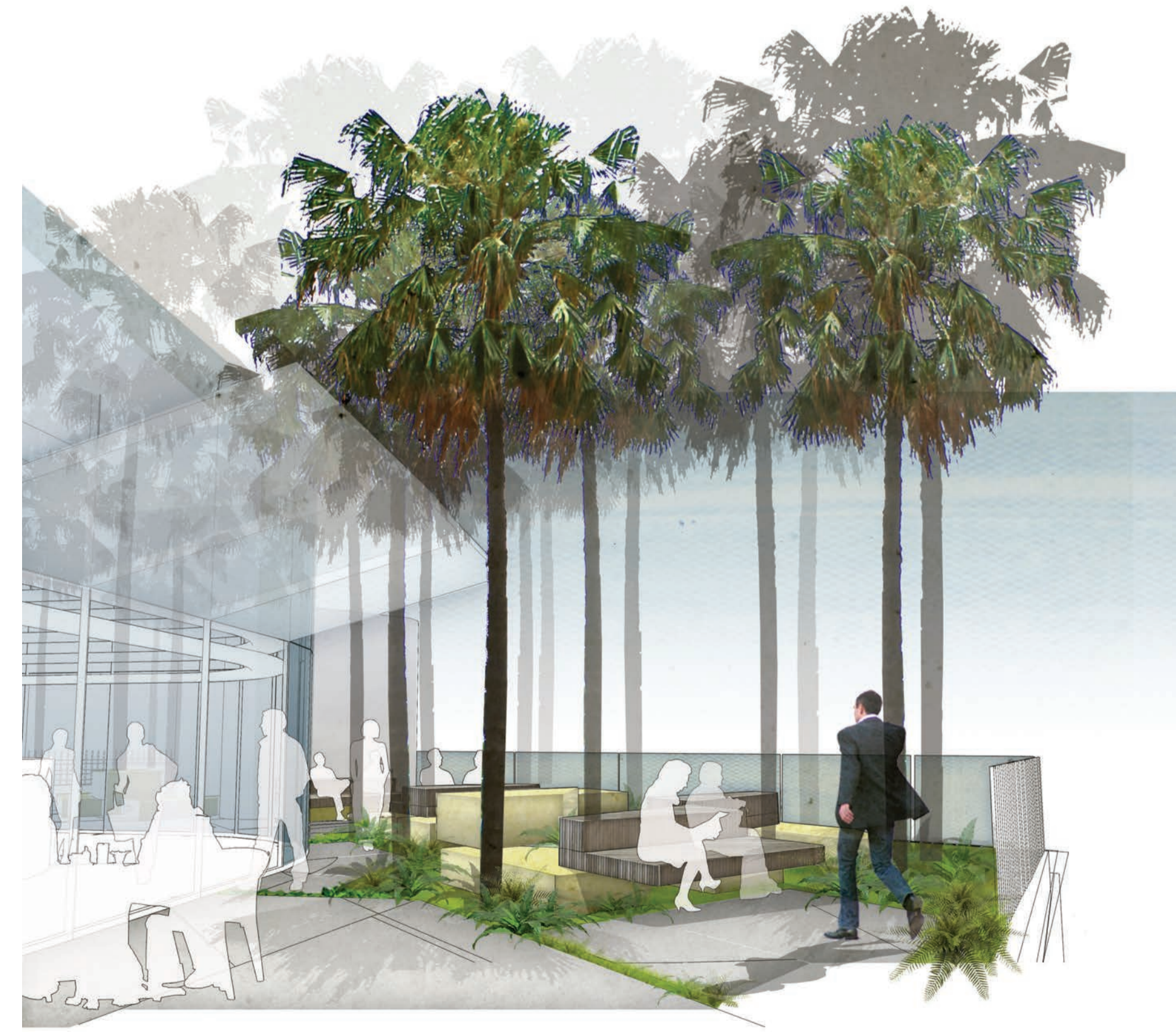
Sky Lobby Landscape Concept Design



Key

1. Bar area with saw cut concrete slab
2. Concrete slabs with open joint off the accessible path
3. Inaccessible garden zones
4. Timber deck lounges within the palm forest
5. Sandstone slabs and 'monoliths'
6. 'Fracture' landscape planting
7. Cabbage tree palm forest
8. Ventilation risers
9. Balustrade

Sky lobby lounge area



Terraced seating area with timber lounges within a Cabbage tree palm forest

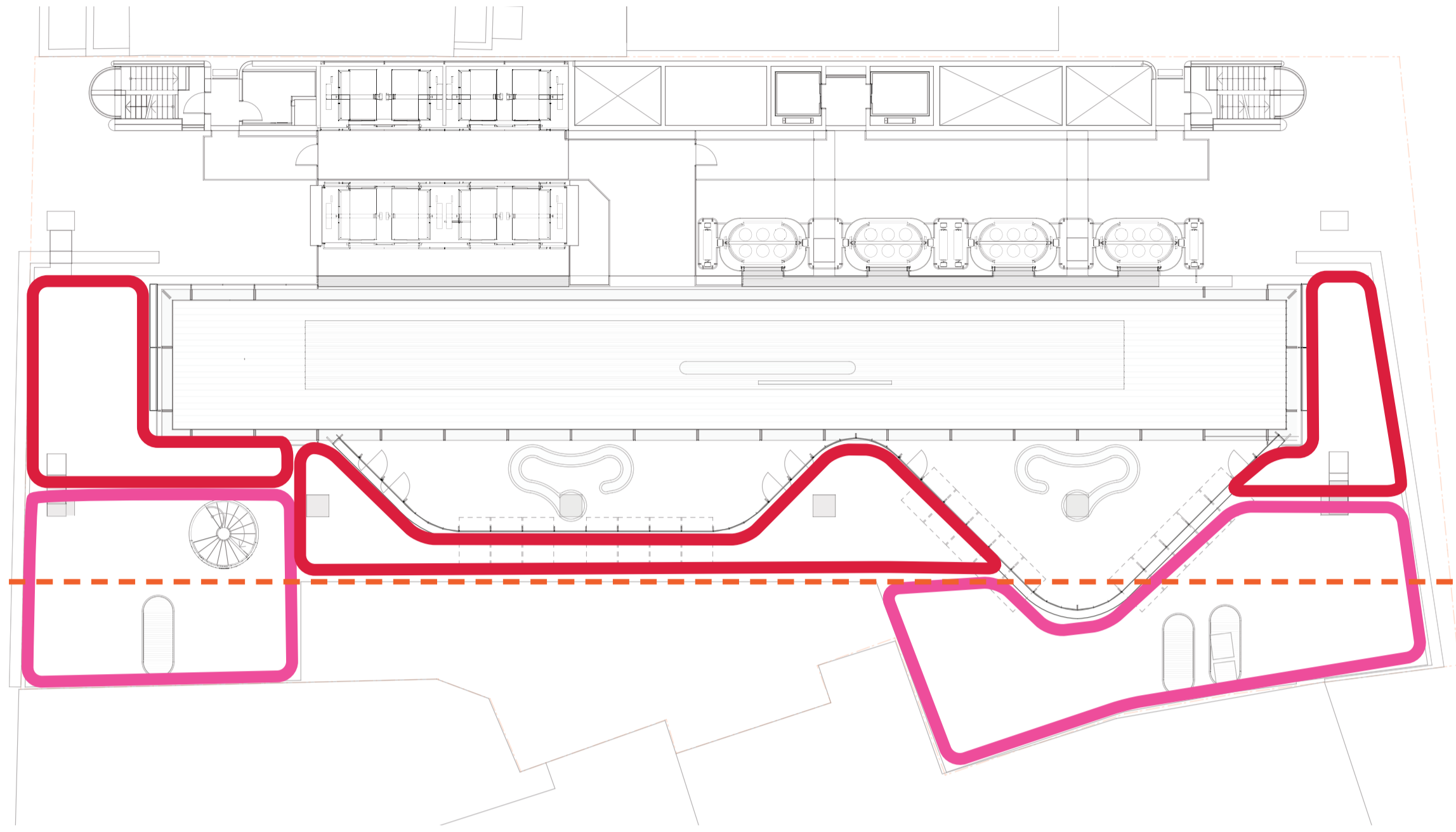
Project Reference Images



Timber lounges, The High Line, New York
Sandstone quarry blocks, Sydney
Cabbage tree palms, (*Livistonia australis*), Darling Harbour Sydney



Stacked stone slabs, Keller Fountain, Lawrence Harpin, USA
Stone paving, Park Village office Complex, Munich- Burger LandschaftsArchitekten and MRD
Timber lounges within planting, Foundaries garden, France
Concrete with sawcuts, Pirrama Park, Sydney
Stacked forms, Seattle Freeway Park, Lawrence Harpin, USA



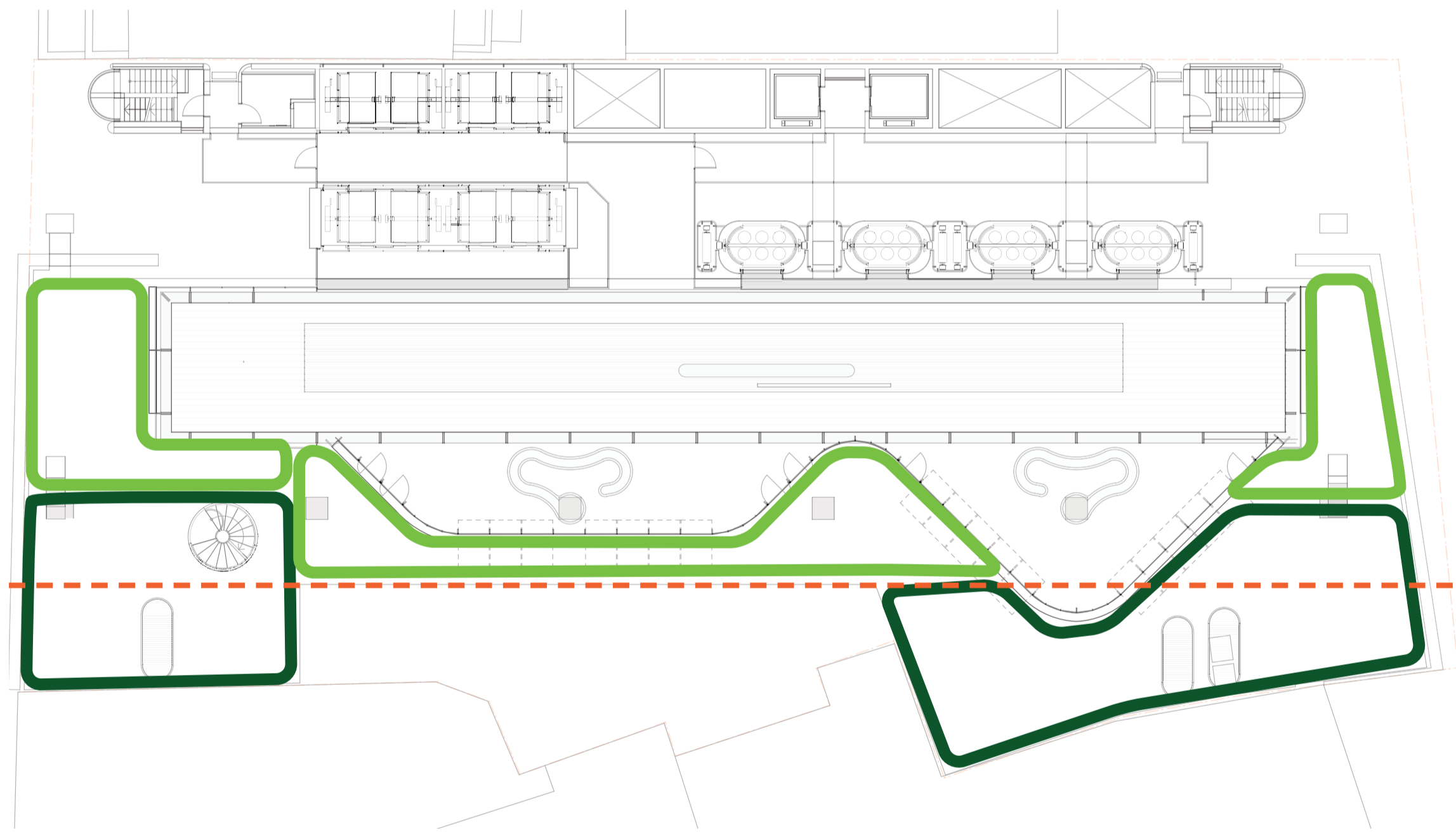
Soil Depths

- 9m3 of soil is required per palm tree
- 40 palms can be planted within the deep soil areas

○ 1.2m deep soil area

○ 600mm depth of soil

building over



Planting Type

○ 'Fracture' Planting
600mm depth of soil

○ Palm and Rock Forest Planting
1.2m deep soil area
Mixed orchids, ferns and lithophytes and palms

building over

Fracture Planting

Botanic Name	Common Name	Pot Size
Grasses / Flowering Plants		
<i>Beschornia yuccoides</i>	Mexican Lily	300mm
<i>Dietes robinsoniana</i>	Lord Howe Island Dietes	300mm
<i>Eucharis amazonica</i>	Eucharist Lily	200mm
<i>Liriope arizona</i>	Dwarf Liriope	200mm
<i>Neomerica caerulea</i>	Brazilian Walking Iris	200mm
Cycads		
<i>Macrozamia communis</i>	Burrawang	300mm
<i>Zamia furfuracea</i>	Cardboard Palm	300mm



Beschornia yuccoides *Dietes robinsoniana* *Eucharis amazonica*



Macrozamia communis *Zamia furfuracea* *Neomerica caerulea*

Palm and Rock Forest Planting

Botanic Name	Common Name	Pot Size
Trees		
<i>Livistonia australis</i>	Cabbage Tree Palm	Trunks 6-12m
Ferns		
<i>Asplenium australicum</i>	Birds Nest Fern	300mm
<i>Blechnum cartilagenum</i>	Gristle Fern	200mm
<i>Huperzia phlegmaria</i>	Club Moss	200mm
<i>Microsorium punctatum</i>	Fishtail Strap Fern	200mm
Groundcovers / Flowering Plants		
<i>Dendrobium speciosum</i>	Rock Orchid	300mm
<i>Soleirolia soleirolii</i>	Babys Tears	150mm



Huperzia phlegmaria *Microsorium punctatum* *Asplenium australicum*



Blechnum cartilagenum *Dendrobium speciosum* *Soleirolia soleirolii*

Public Domain (O'Connell Street)

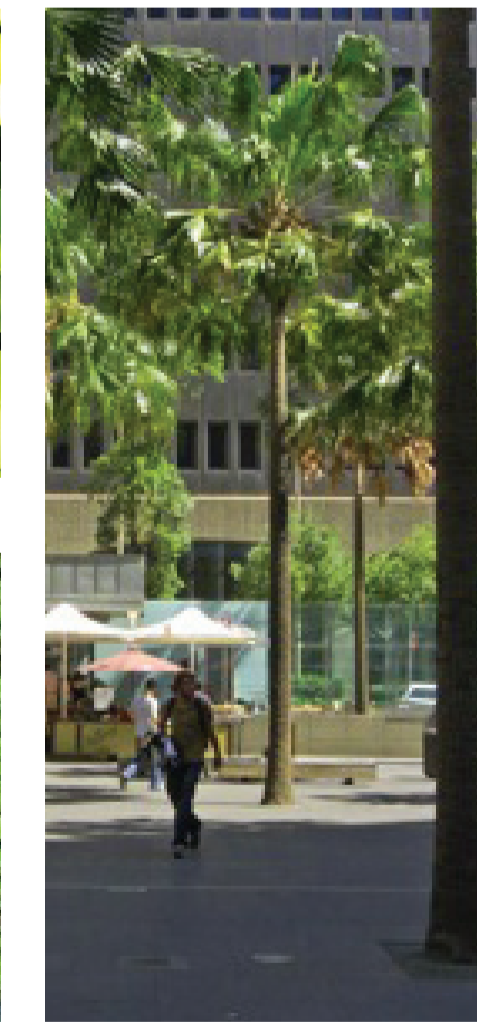
Botanic Name	Common Name	Pot Size
Trees		
<i>Populus simonii</i>	Simon's Poplar	200L

(Bligh Street)

Botanic Name	Common Name	Pot Size
Trees		
<i>Livistonia australis</i>	Cabbage palm	Trunks 6-12m



Livistonia australis *Populus simonii*



Livistonia australis

Landscape Planting Strategy