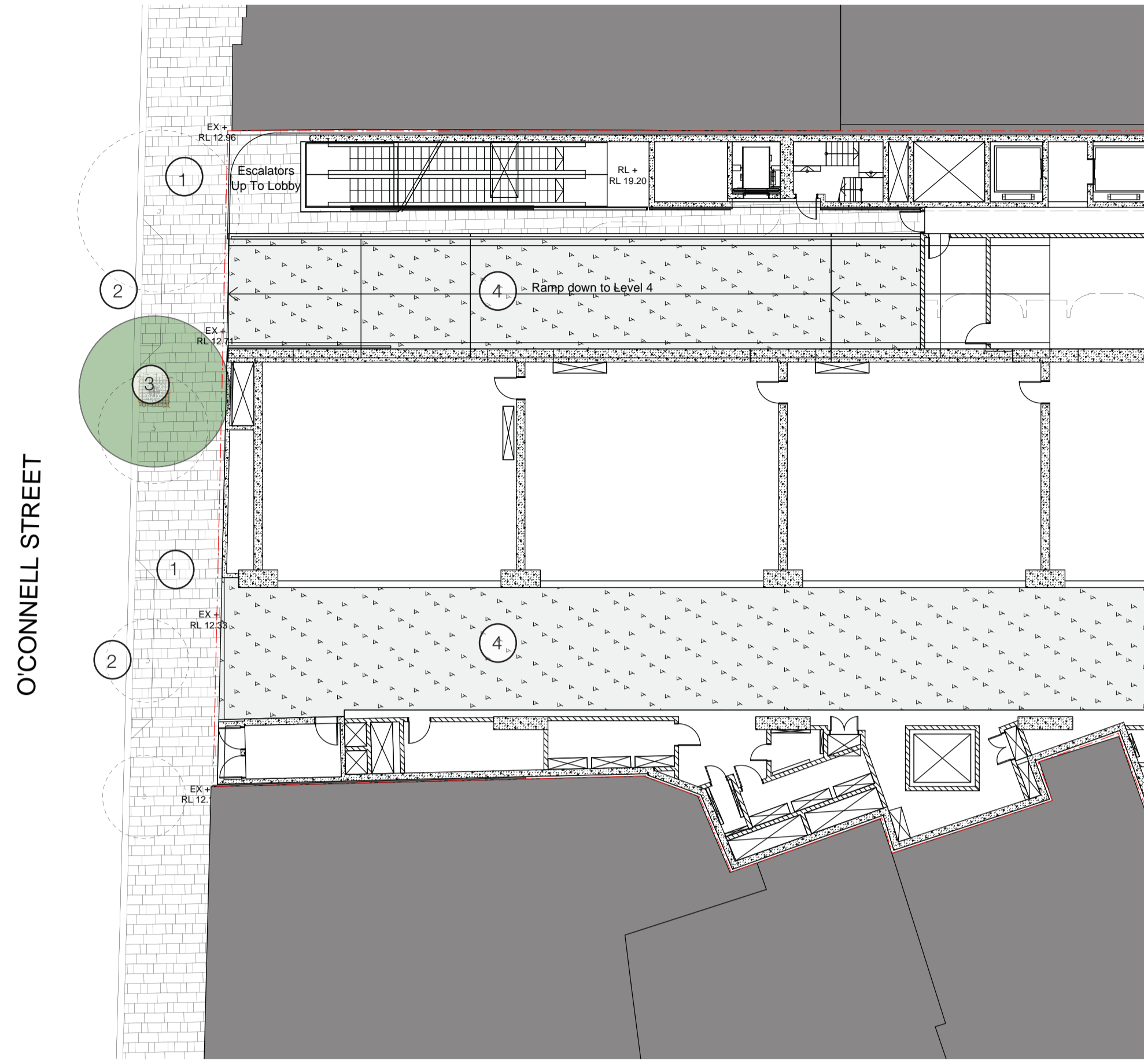


Appendix V

## Public domain concept plan

Aspect

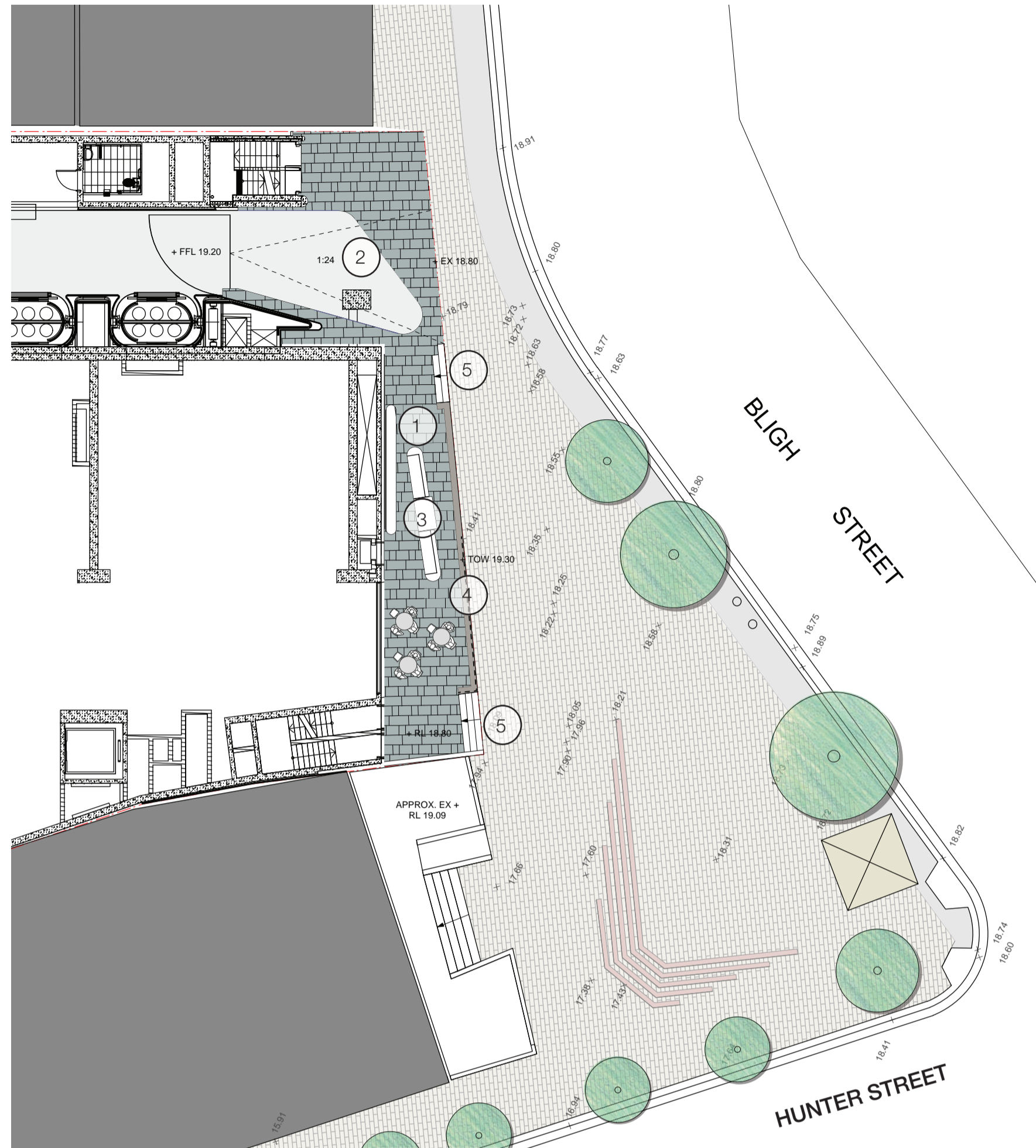
# 01. O'Connell Street concept design



- Key**
- 1. Granite paving as per City of Sydney material palette
  - 2. Driveway laybacks (City of Sydney standard detail)
  - 3. New tree planting, *Populus simonii* (City of Sydney standard detail tree pit)
  - 4. Vehicular entries (concrete paved)

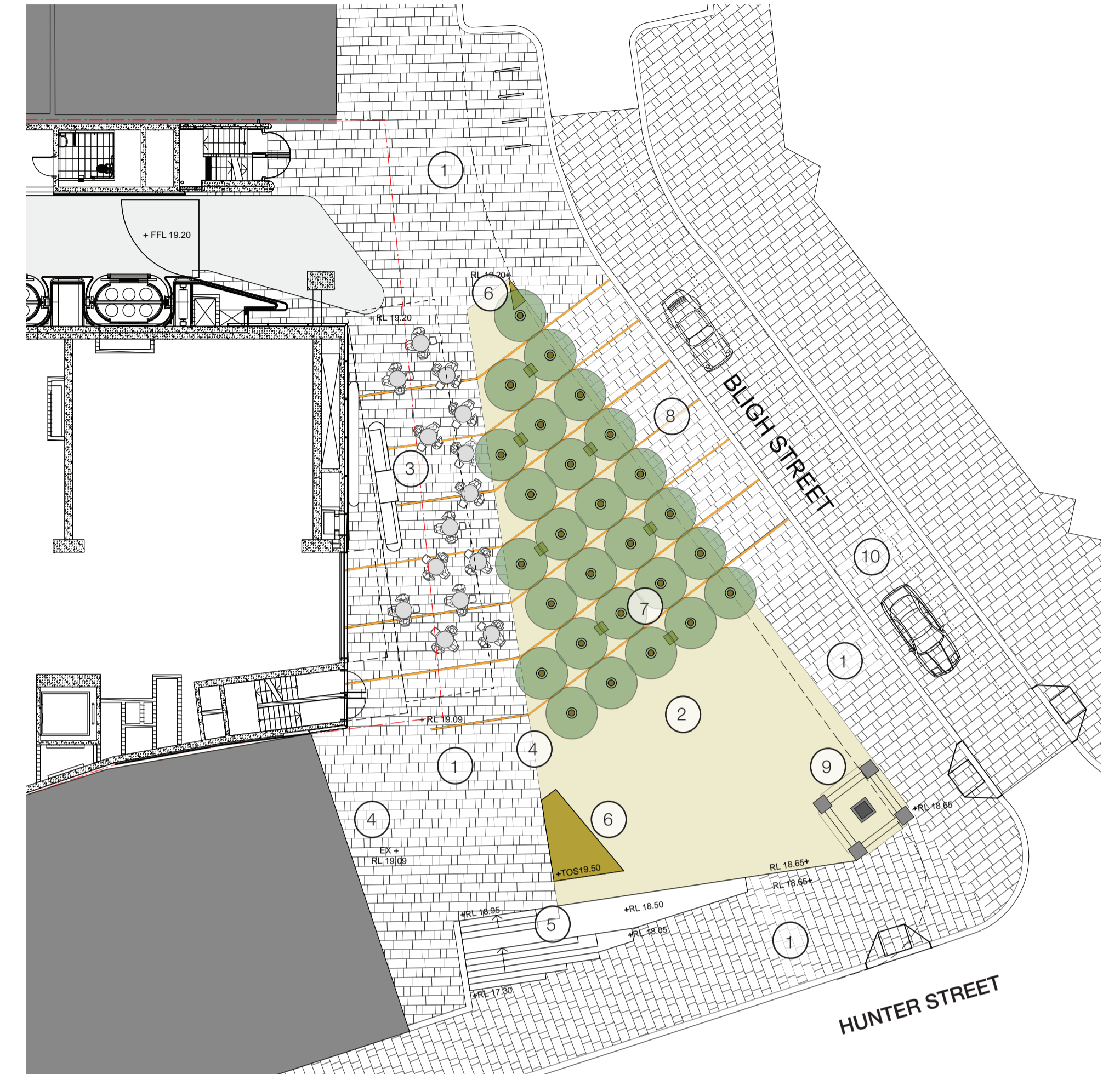
Trees to be removed (4 total)

# 02 . Bligh Street - Public domain upgrades to the boundary line (temporary solution)



- Key**
- 1. Granite paving as per City of Sydney material palette
  - 2. Lobby paving tongue
  - 3. Cafe
  - 4. Seating height wall

# 03. Bligh Street - Integration with the Richard Johnson Square Concept Design (long term solution)



- Key**
- 1. Granite paving as per City of Sydney material palette
  - 2. Sandstone paved square
  - 3. Cafe and spillout seating
  - 4. New on grade access to adjacent building and square
  - 5. Precast concrete stairs with integral lighting
  - 6. Seating elements
  - 7. Urban forest of *Livistona australis*
  - 8. Brass strips/ drainage slots
  - 9. Re-positioned monument
  - 10. Bligh Street road upgrades

## Project reference images



City of Sydney inner city streetscape materials palette and furniture | Sandstone, Bligh Street Sydney | Possible brass inserts | Linear drainage slots | *Livistonia australis*, Chifley Square Sydney | *Populus simonii*, Hyde Park Sydney | WSUD tree pit, Melbourne | Bike Rack, Sydney

## Location plan

