

TYPICAL OFFICE FLOOR  
FLOOR TO FLOOR SECTION

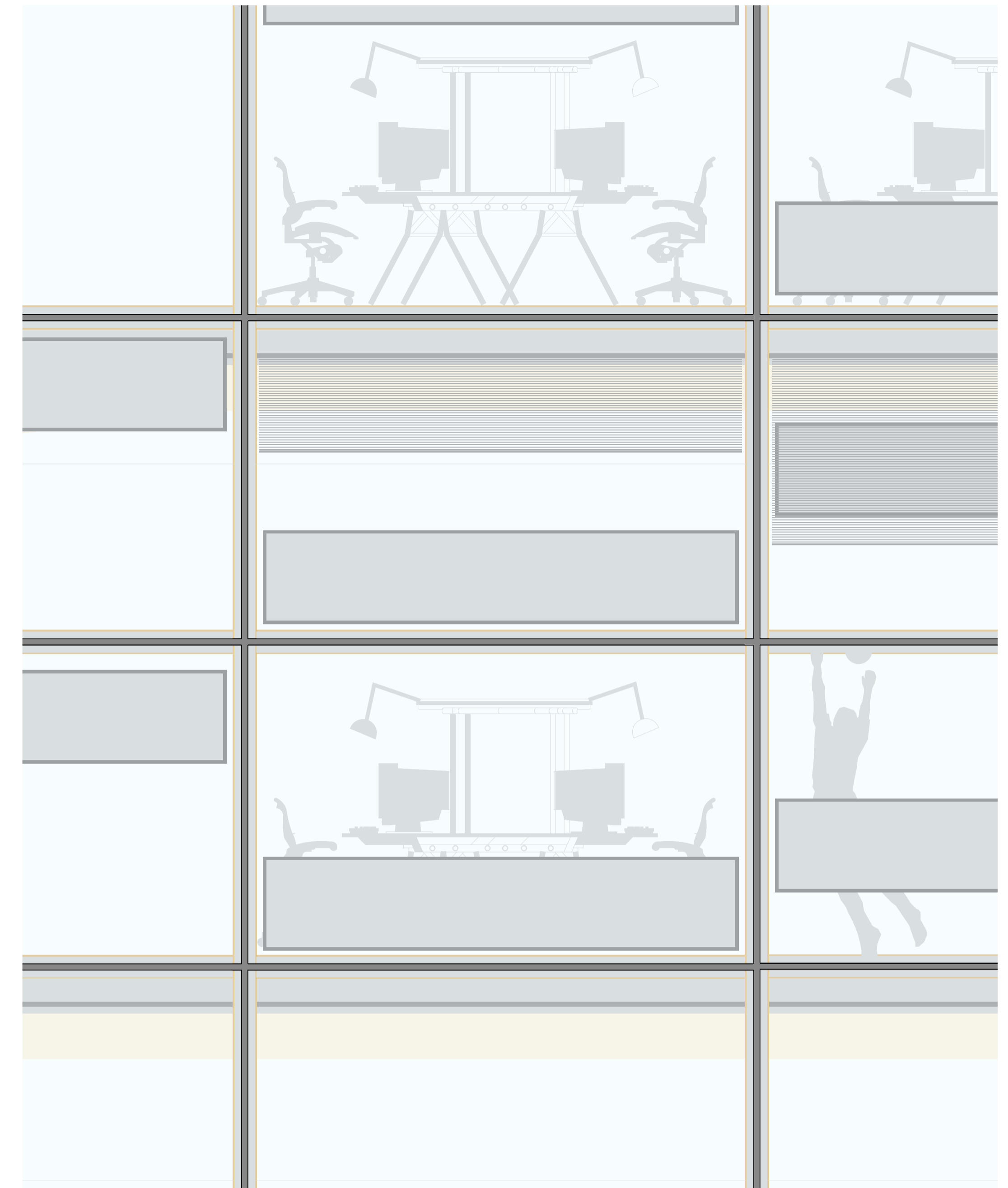
- CARPET TILE
- TENANT OPTION FOR COLOUR/MATERIAL OF BACK PAN -  
DEFAULT = LAMINATE PANEL
- INTERNAL BLIND BY TENANT
- STRUCTURALLY GLAZED DGU WITH  
CERAMIC WHITE FRIT
- SUSPENDED CEILING
- TIMBER STRONGBACK
- STACK JOINT - TIMBER ENCASED ALUMINIUM  
CURTAIN WALL FRAMING
- RAISED FLOOR ZONE (OPTIONAL)
- FIXED POWDERCOATED ALUMINIUM SHADOW BOX  
SPANDREL PANEL. GUIDE TRACKS INTEGRATED INTO  
FACADE MULLIONS.

TENANT LIGHTING ZONE  
(Poss. down to 120mm)

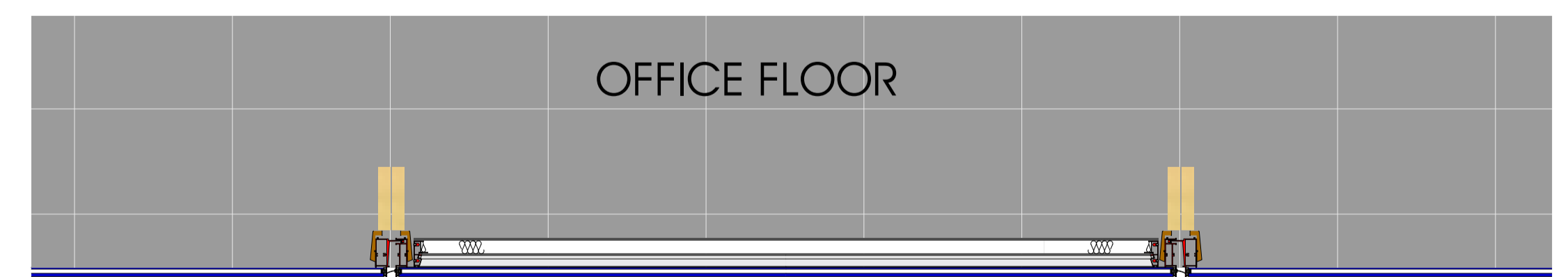
CONCRETE COLUMN WITH TIMBER COVER PANEL  
TO CONCEAL TENANT/BASE SERVICES RISER  
BEHIND

2700 CLEAR HEIGHT

1900HX 3000W CURTAIN WALL PANEL

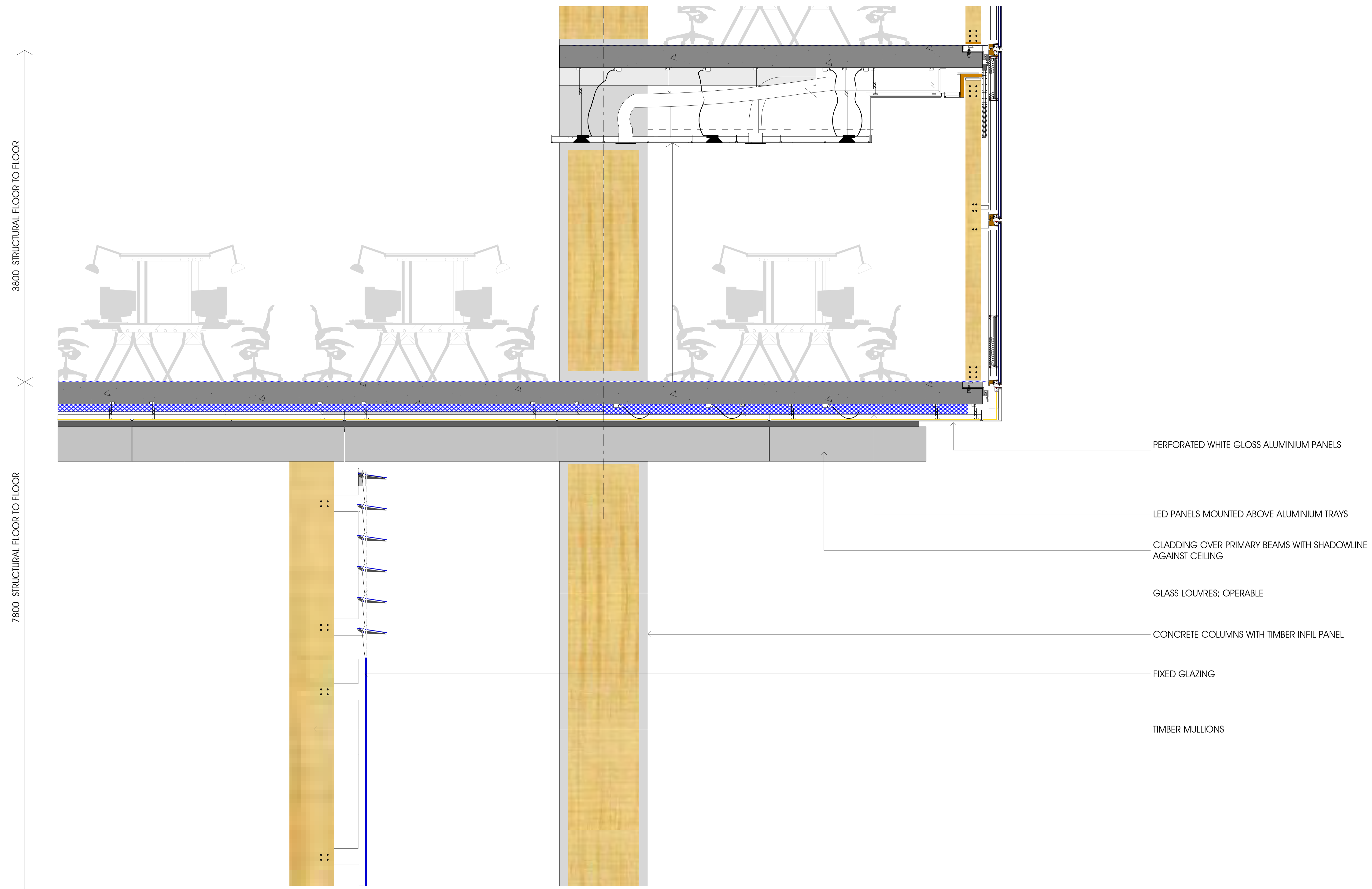


ELEVATION



PLAN

3000 TYPICAL MODULE



3800 STRUCTURAL FLOOR TO FLOOR

7600 STRUCTURAL FLOOR TO FLOOR

PERFORATED WHITE GLOSS ALUMINIUM PANELS

LED PANELS MOUNTED ABOVE ALUMINIUM TRAYS

CLADDING OVER PRIMARY BEAMS WITH SHADOWLINE AGAINST CEILING

GLASS LOUVRES; OPERABLE

CONCRETE COLUMNS WITH TIMBER INFIL PANEL

FIXED GLAZING

TIMBER MULLIONS

SKY LOBBY AND SKY GARDEN SOFFIT INTERFACE

# 33 Bligh street - FSA Schedule

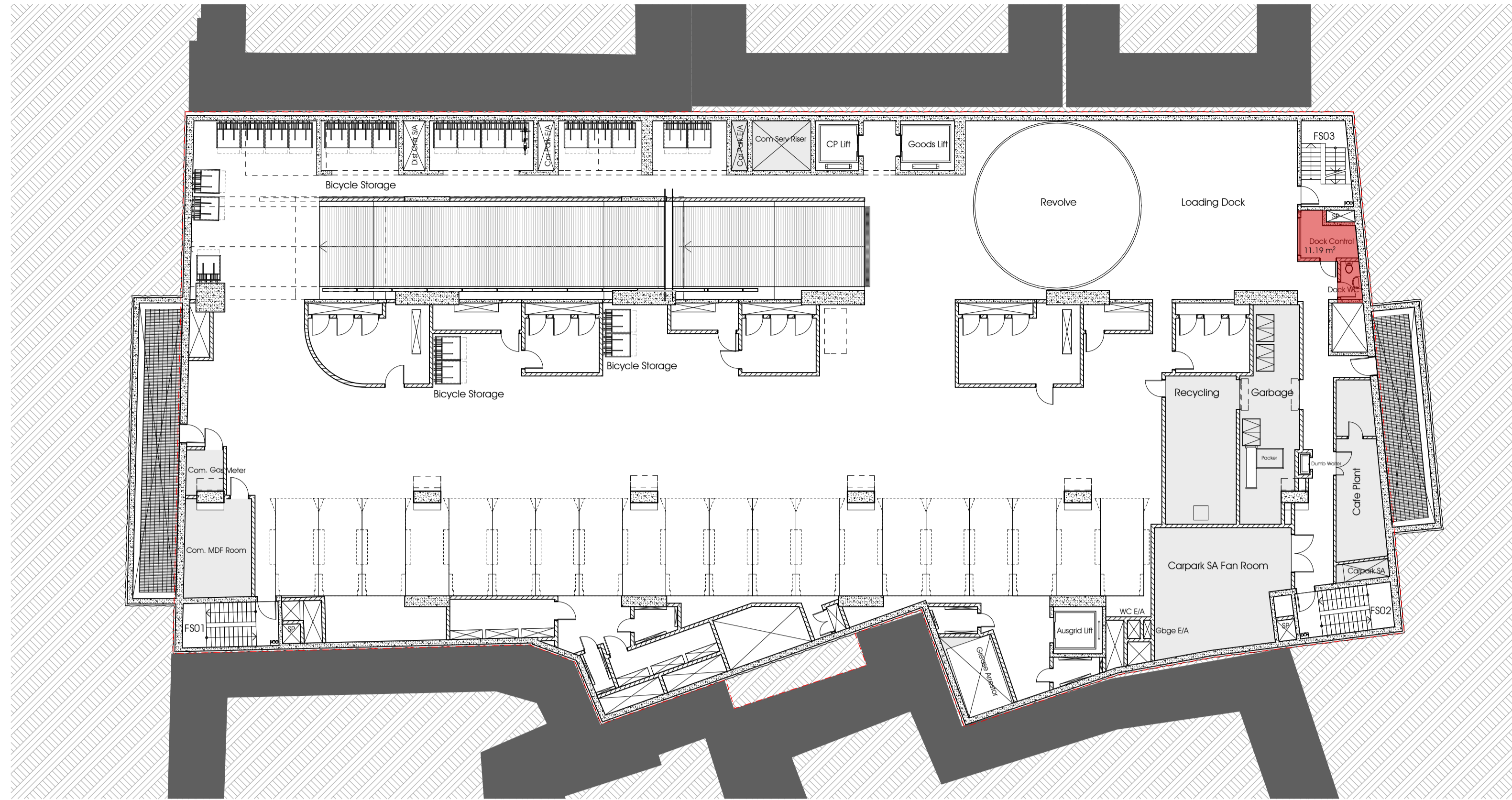
DATED 19.09.2011  
ISSUE B

Permissible FSR = 28 050m<sup>2</sup> 13.75 to 1

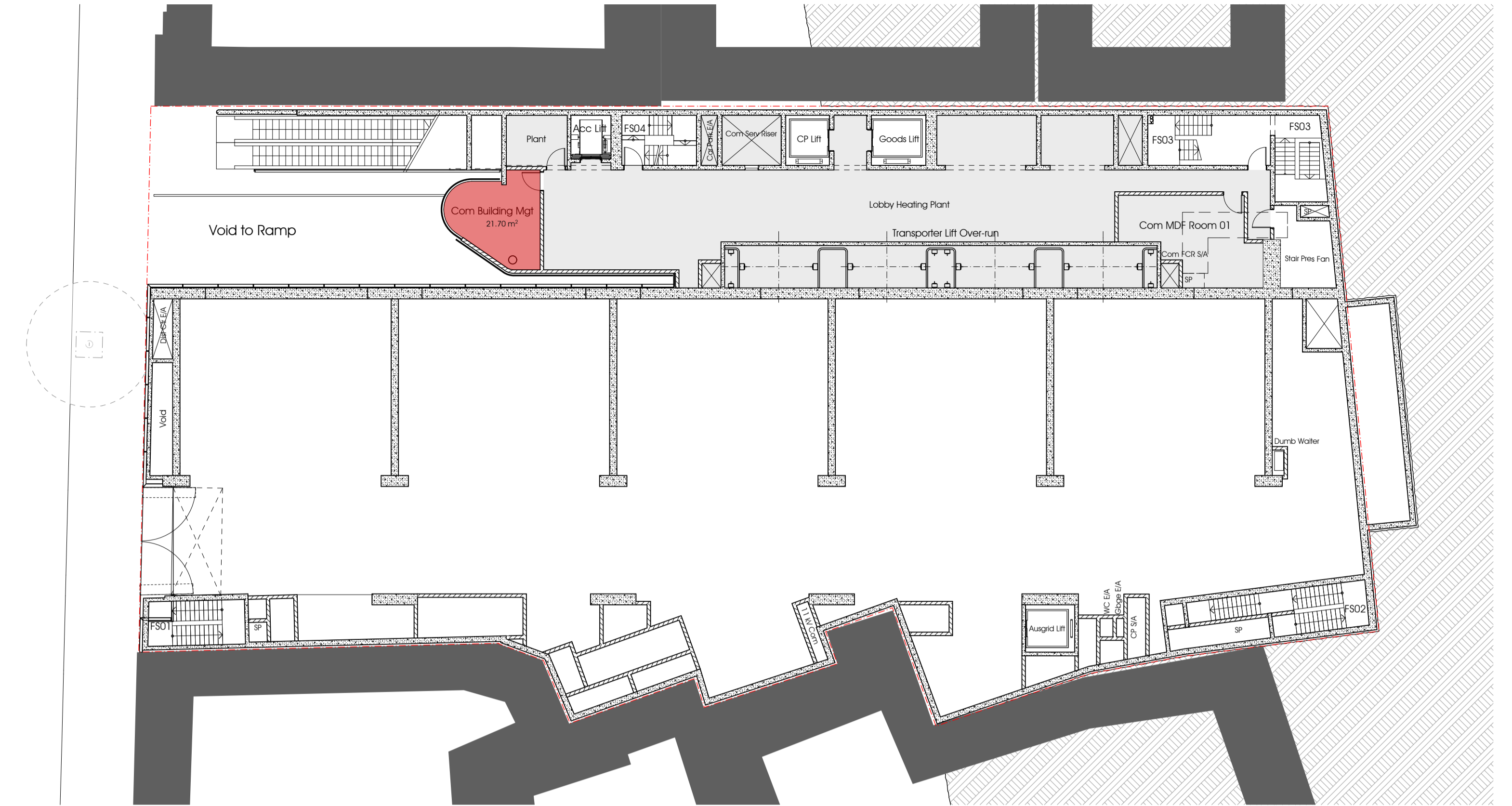
TOWER DESCRIPTION	LEVEL			FSA	NOTES
ROOF				0 m <sup>2</sup>	
PLANT ROOF				0 m <sup>2</sup>	
HIGH RISE	Level 36			1342 m <sup>2</sup>	
HIGH RISE	Level 35			1342 m <sup>2</sup>	
HIGH RISE	Level 34			1342 m <sup>2</sup>	
HIGH RISE	Level 33			1342 m <sup>2</sup>	
SKY GARDEN	Level 32			9 m <sup>2</sup>	NATURALLY VENTILATED OPEN SPACE
MID RISE	Level 31			1474 m <sup>2</sup>	
MID RISE	Level 30			1474 m <sup>2</sup>	
MID RISE	Level 29			1474 m <sup>2</sup>	
MID RISE	Level 28			1474 m <sup>2</sup>	
MID RISE	Level 27			1474 m <sup>2</sup>	
PLANT ROOM 2	Level 26			0 m <sup>2</sup>	
LOW RISE CHANGE-OVER	Level 25			1362 m <sup>2</sup>	
LOW RISE	Level 24			1362 m <sup>2</sup>	
LOW RISE	Level 23			1362 m <sup>2</sup>	
LOW RISE	Level 22			1362 m <sup>2</sup>	
LOW RISE	Level 21			1362 m <sup>2</sup>	
LOW RISE	Level 20			1362 m <sup>2</sup>	
LOW RISE	Level 19			1362 m <sup>2</sup>	
LOW RISE	Level 18			1362 m <sup>2</sup>	
LOW RISE	Level 17			1362 m <sup>2</sup>	
LOW RISE	Level 16			1362 m <sup>2</sup>	
LOW RISE	Level 15			1362 m <sup>2</sup>	
TRANSPORTERS MACHINE ROOM				0 m <sup>2</sup>	
SKY LOBBY	Level 14			9 m <sup>2</sup>	ACCESSIBLE TOILET LOBBY IS NATURALLY VENTILATED OPEN SPACE
PLANT ROOM 1 UPPER	Level 13			236 m <sup>2</sup>	
PLANT ROOM 1 LOWER	Level 12			0 m <sup>2</sup>	
TRANSFORMER RADIATOR COOLING	Level 11			0 m <sup>2</sup>	
CONTROL ROOM/CAPACITOR	Level 10			0 m <sup>2</sup>	
CABLE JOINING	Level 09			0 m <sup>2</sup>	
1.32KV SWITCH ROOMS	Level 08			0 m <sup>2</sup>	
BLIGH ST FOYER	Level 07			7 m <sup>2</sup>	LOBBY IS NATURALLY VENTILATED OPEN SPACE
				36 m <sup>2</sup>	BLIGH STREET CAFE
BUILDING MANAGEMENT	Level 06			22 m <sup>2</sup>	COMMERCIAL BUILDING MANAGEMENT
TX BAY	Level 05				
CARPARK LEVEL 04	Level 04	Car Spaces	10	11 m <sup>2</sup>	
		Service Vehicle Spaces	5		Number TBC by Kann Finch / Ausgrid
		Truck Spaces	2		
		Courier Spaces	1		
		Motorbike Spaces	1		
CARPARK LEVEL 03	Level 03	Car Spaces	28	0 m <sup>2</sup>	
		Motorbike Spaces	1		
SWITCHROOM/ DISTRIBUTION CENTRE	Level 02			0 m <sup>2</sup>	
CABLE MARSHALLING	Level 01			0 m <sup>2</sup>	
<b>TOTALS</b>		<b>TOTAL CARS</b>	<b>38 cars</b>	<b>28050 m<sup>2</sup></b>	
			<b>5 service vehicles</b>		
			<b>2 truck spaces</b>		
			<b>1 courier space</b>		
			<b>2 motorbikes</b>		

**NOTES:**

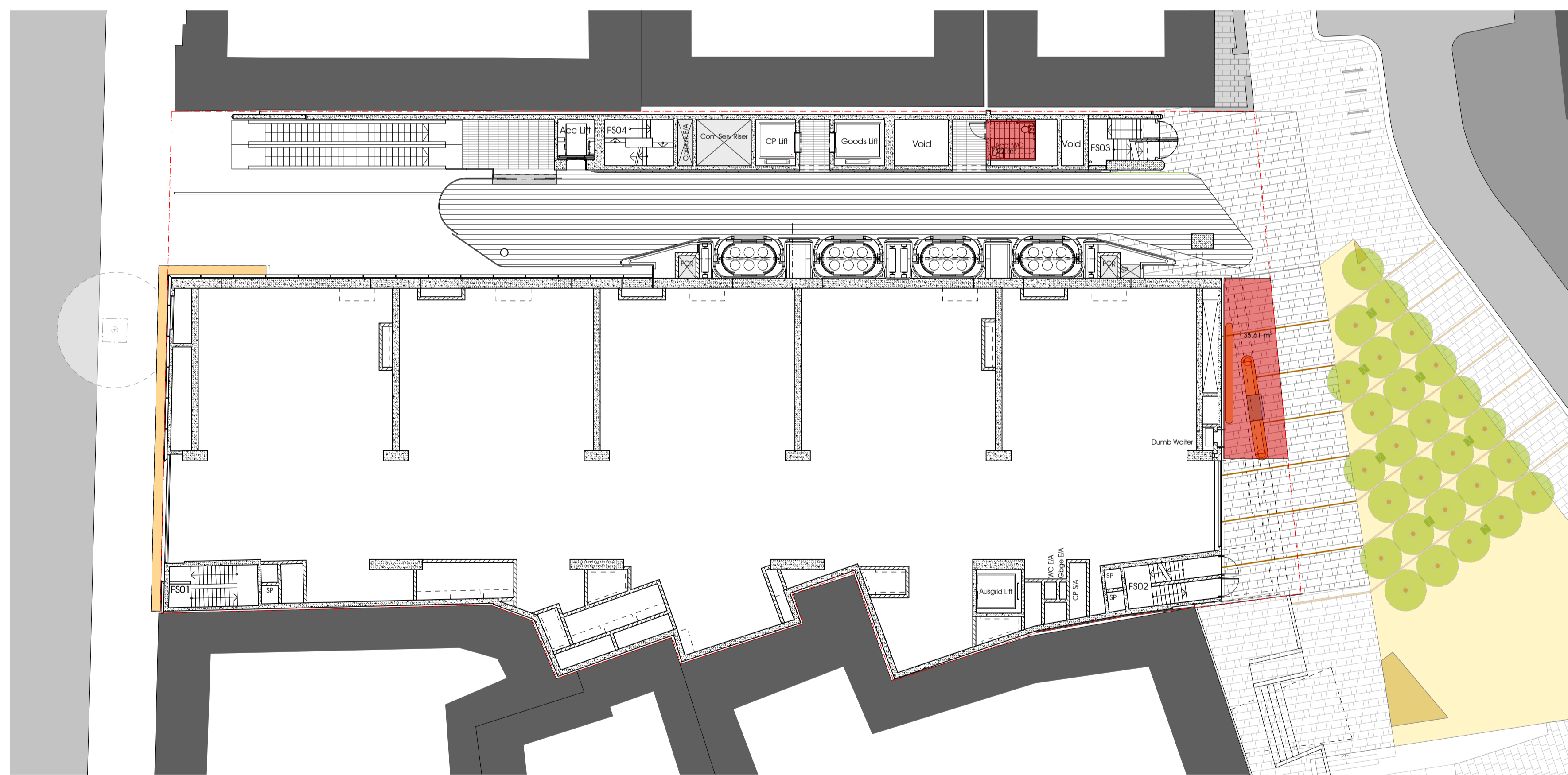
All areas are approximates and should be read in conjunction with drawing issue  
 FSA Sum of gross horizontal areas contained within the inner faces of the outer walls  
 FSA excludes naturally ventilated means-of-egress stairs



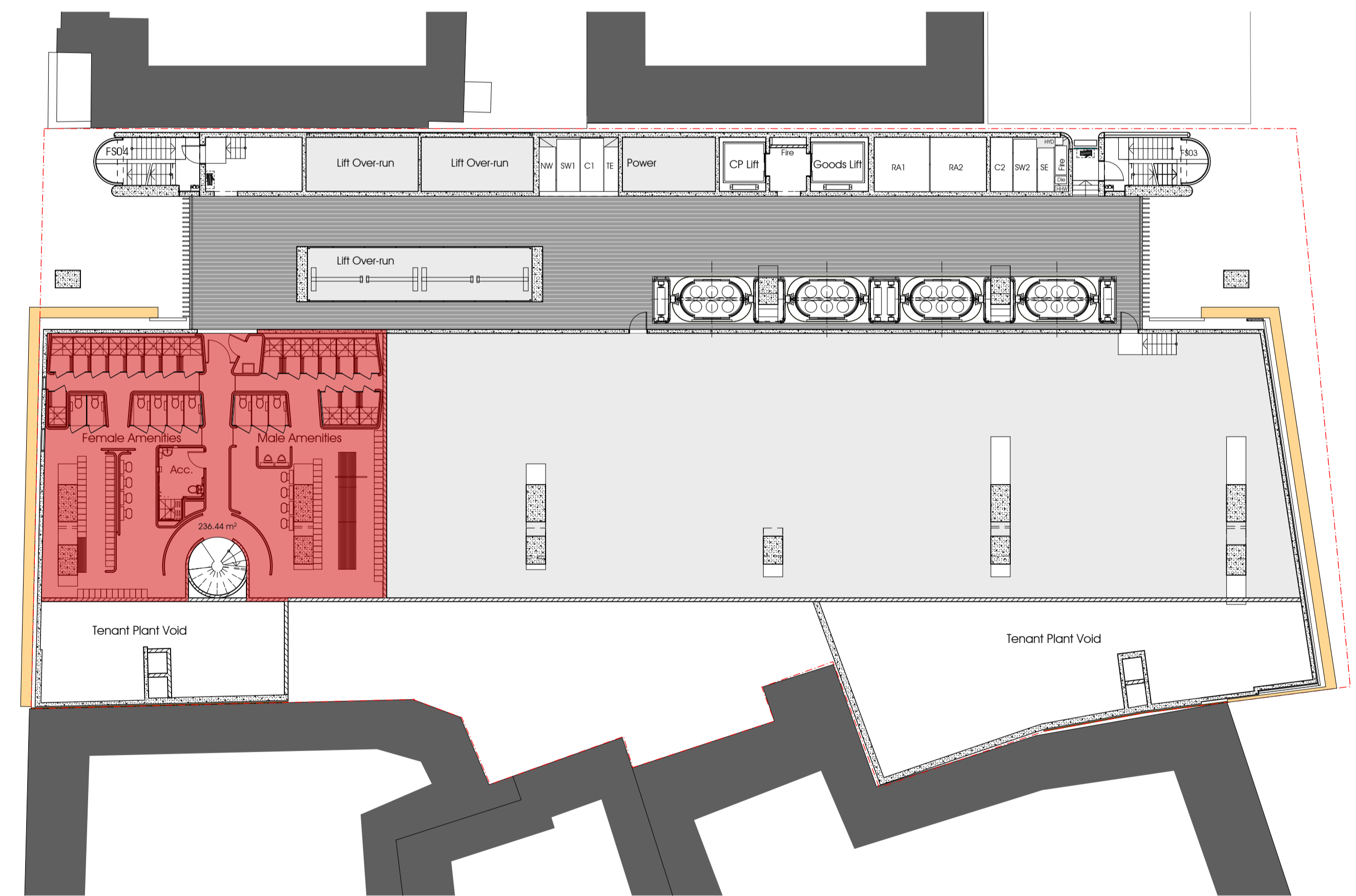
Level 04 FSA = 11m<sup>2</sup>



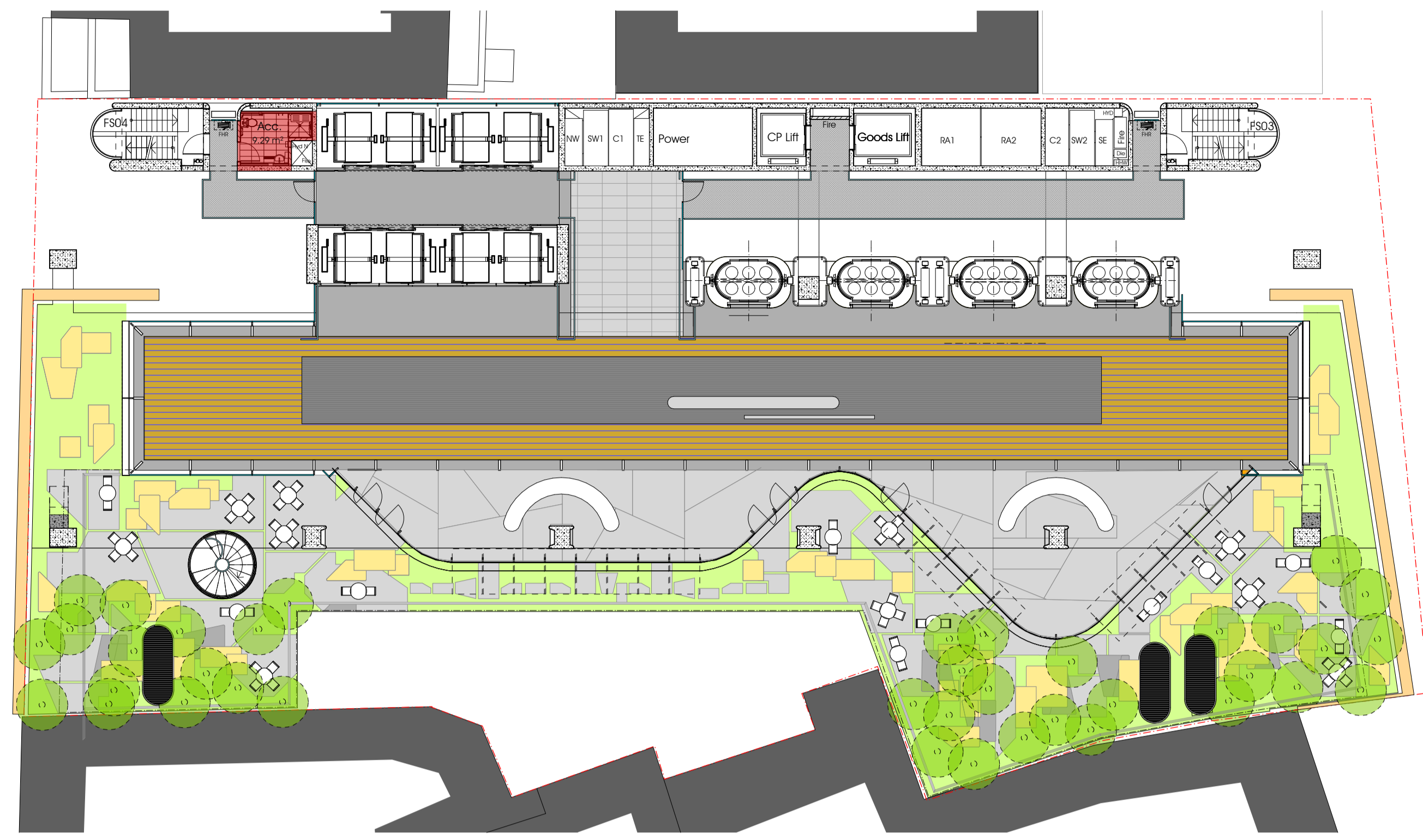
Level 06 FSA = 16m<sup>2</sup>



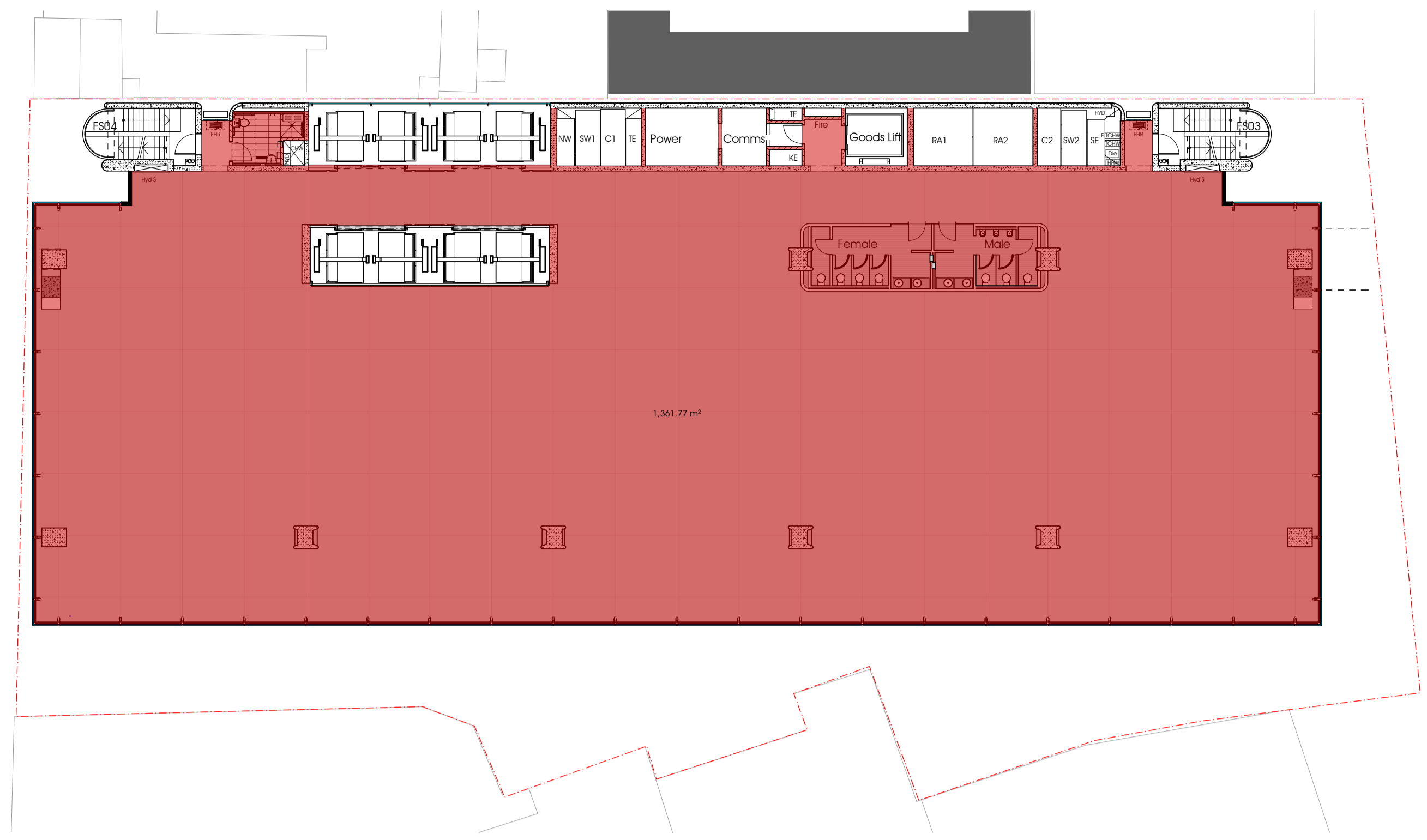
Level 07 FSA = 55m<sup>2</sup>



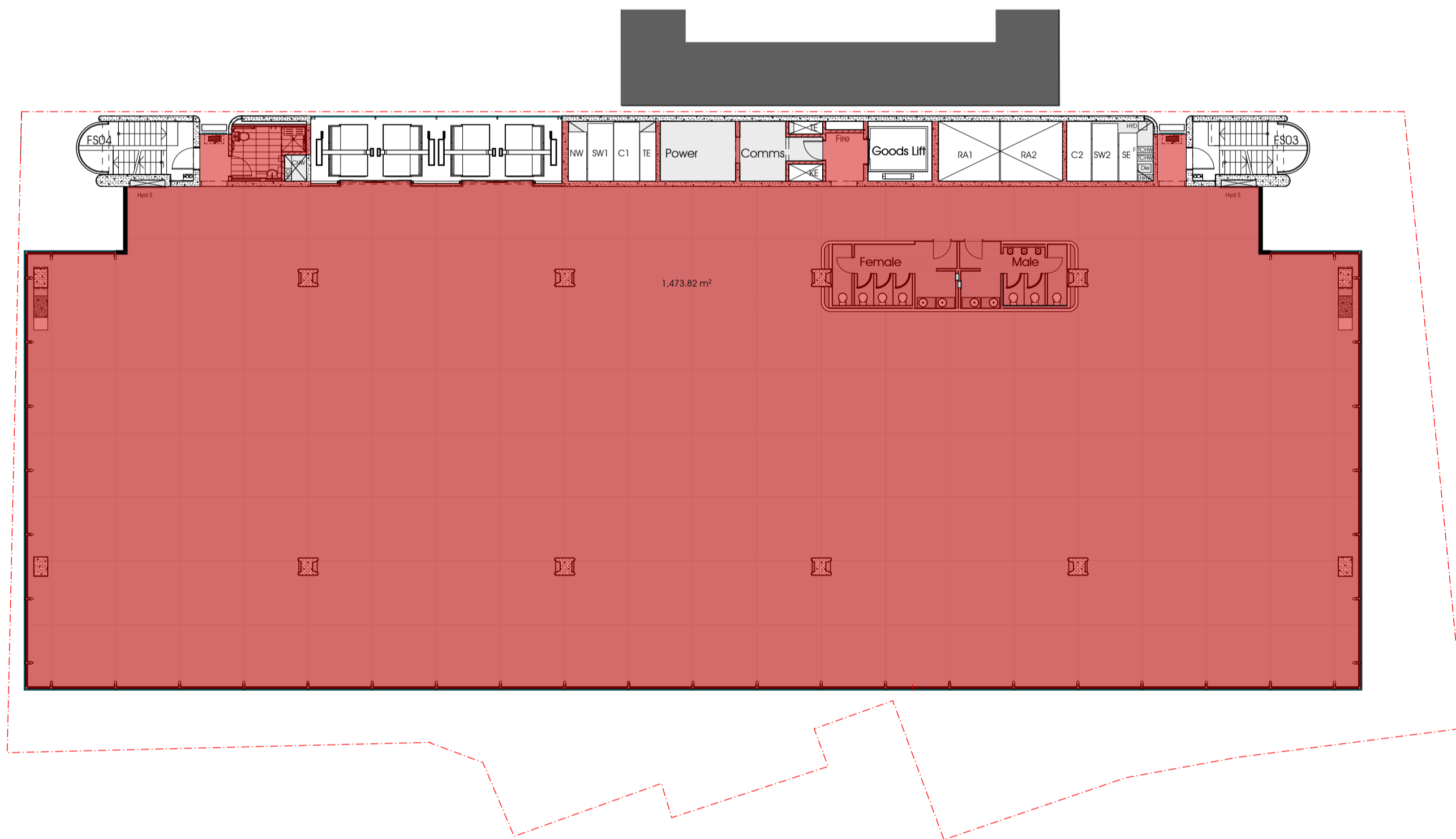
Level 13 FSA = 236m<sup>2</sup>



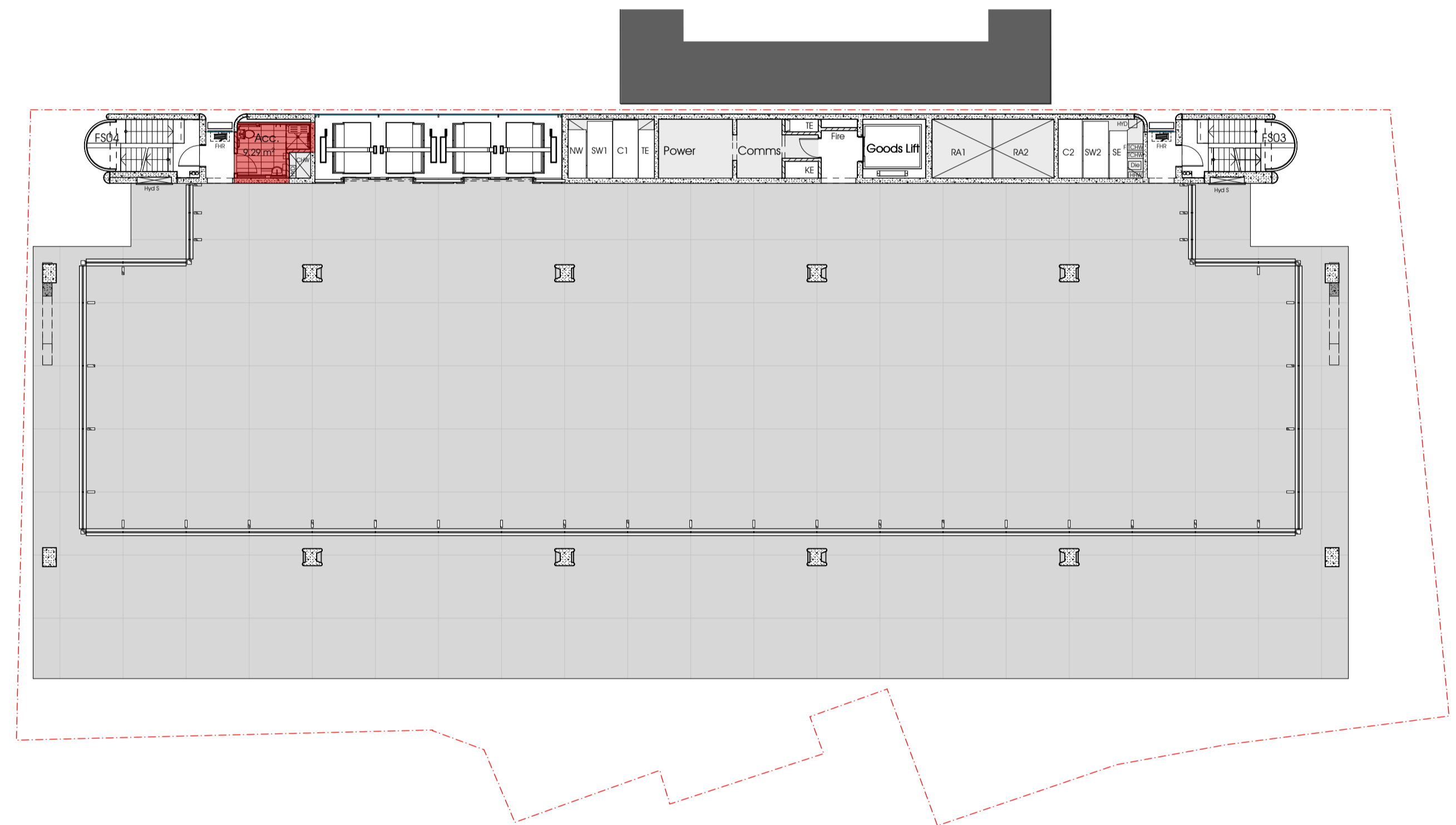
Level 14 FSA = 9m<sup>2</sup>



Levels 15 to 25 FSA = 1362m<sup>2</sup> per level



Levels 27 to 31 FSA = 1474m<sup>2</sup> per level



Levels 32 Sky Garden FSA = 9m<sup>2</sup>



Levels 33 to 36 FSA = 1342m<sup>2</sup> per level



Bligh Street - Looking From South-East  
Sculptural wall shown indicatively only. Refer to architectural elevations.

Bligh Street - Looking From North-East  
Sculptural wall shown indicatively only. Refer to architectural elevations.



O'Connell Street - Looking From South-West  
Sculptural wall shown indicatively only. Refer to architectural elevations.



O'Connell Street - Looking From North-West  
Sculptural wall shown indicatively only. Refer to architectural elevations.