

**SITeworks LEGEND**

	LIMIT OF WORKS BOUNDARY
	PROPOSED ROAD CONTROL LINE & NAME
	PROPOSED GRANITE KERB & GUTTER
	PROPOSED GRANITE KERB ONLY
	PROPOSED FLUSH KERB
	PROPOSED DISH DRAIN - 0.9M WIDE
	PROPOSED DISH DRAIN - 0.6M/0.4M WIDE
	PROPOSED MOUNTABLE KERB
	CITY OF SYDNEY COUNCIL SPECIFICATIONS. REFER TO DRAWING 1.1.10
	PROPOSED KERB RAMP
	PROPOSED INLET PIT - ON GRADE, SAG & DISH DRAIN TYPE

**Key to symbols**

**ARCHITECTURAL LEGEND**

	EXISTING HERITAGE BUILDING/STRUCTURE
	PROPOSED BUILDING FOOTPRINT AT GROUND LEVEL
<b>Block</b>	PROPOSED BUILDING BLOCK NUMBER
	PROPOSED BASEMENT ENVELOPE

**STAGING OF CONSTRUCTION**

- MAIN PARK PA.
- BASEMENT PA.
- INFRASTRUCTURE PA (BALFOUR, CHIPPEN, KENT, TOOTH (EAST) AND ASSOCIATED STORMWATER.
- BLOCK 2 PA/BLOCK 5 PA.

-PAs FOR OTHER BLOCKS AND INFRASTRUCTURE TO RUN INDEPENDENTLY (STAGING TO BE CONFIRMED).

**Reference drawings**

**STORMWATER LEGEND**

	PROPOSED PIT
	PROPOSED STORMWATER PIPE
	PROPOSED STORMWATER OUTLET PIPE FROM DETENTION TANK
	EXISTING STORMWATER PIPE

Rev	Date	Drawn	Description	CHK'd	App'd
P1	13-11-12	HSW	ISSUED FOR P.A.	-	XXXX

Level 2, 60 Pacific Highway  
St Leonards, NSW 2065  
Australia  
PO Box 151, St Leonards  
NSW 1590, Australia  
T +61 (0) 9439 2633  
F +61 (0) 9438 4505  
W www.mottmac.com.au

Client

**FRASERS BROADWAY PTY. LTD.**

Title

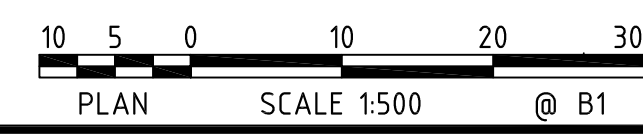
**BLOCKS 6 & 7, CENTRAL PARK COMMERCIAL & RETAIL ADAPTIVE RE-USE GENERAL ARRANGEMENT PLAN**

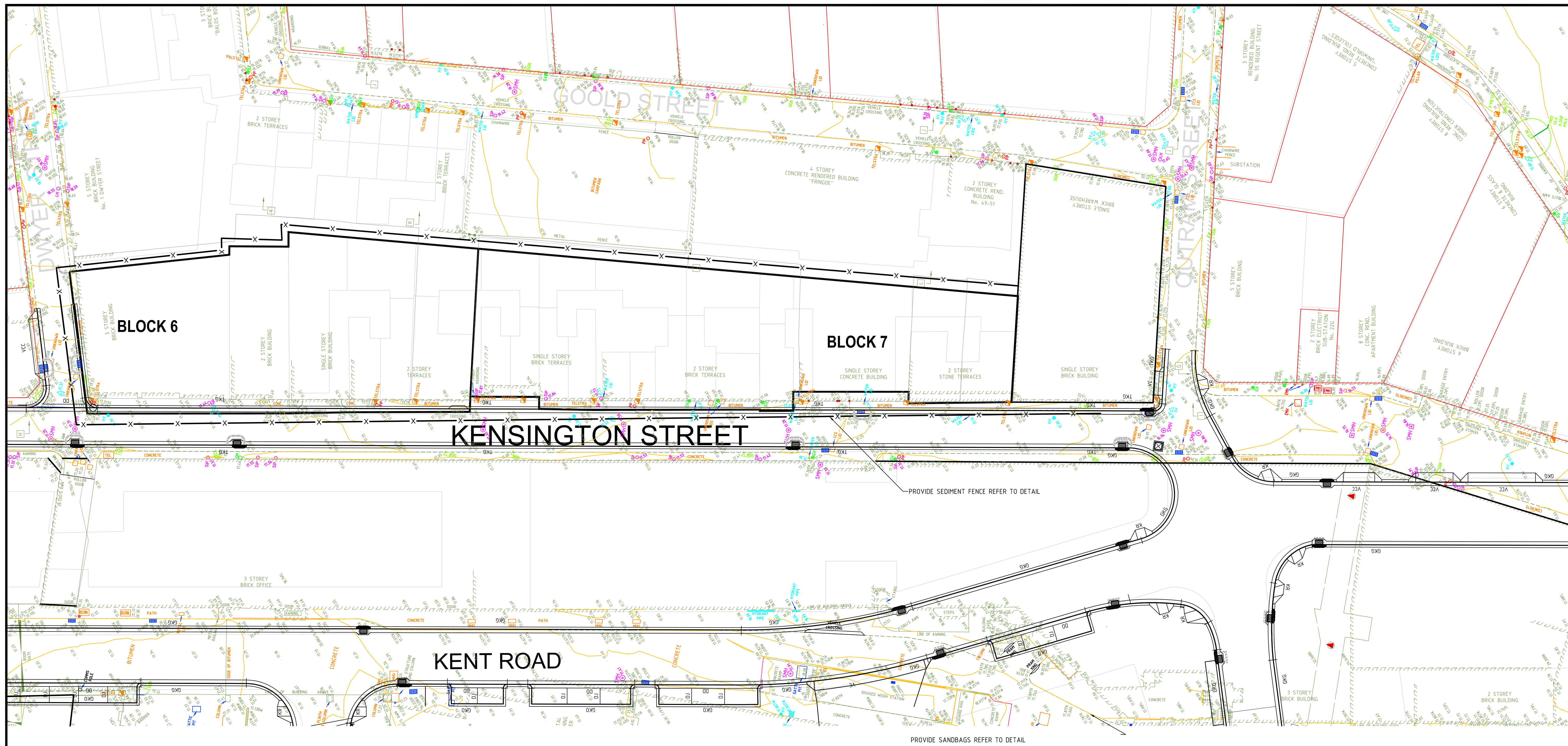
Designed	DC	Eng check	AN
Drawn	HSW	Coordination	AN
Dwg check	DC	Approved	SAW
Scale at B1	1:500.	Status	PRELIM
		Rev	P1

Drawing Number

**MMD-300830-S-DR-CD-0101**

© Mott MacDonald Australia Pty. Ltd. ACN 134 120 353  
This document is issued for the party which commissioned it and for specific purposes connected with the captioned project only. It should not be relied upon by any other party or used for any other purpose. We accept no responsibility for the consequences of this document being relied upon by any other party, or being used for any other purpose, or containing any error or omission which is due to error or omission in data supplied to us by other parties.





Notes

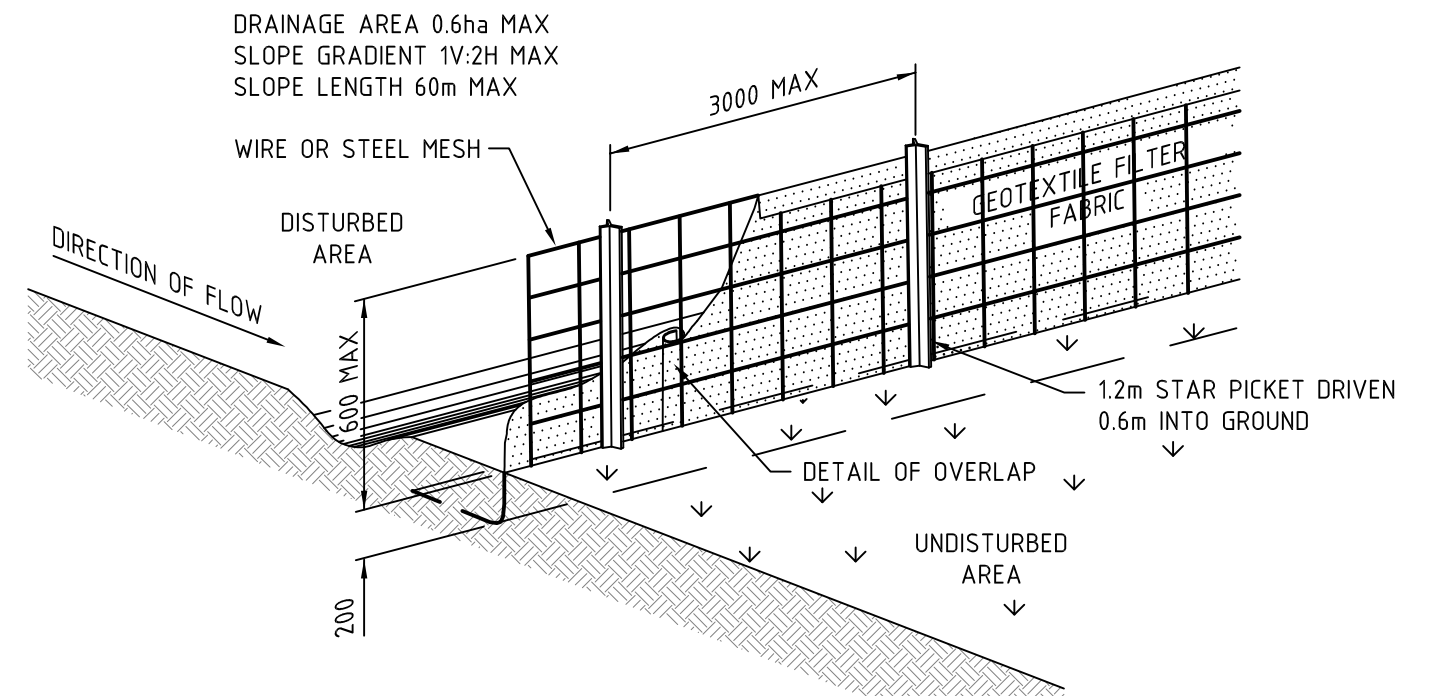
Key to symbols

Reference drawings

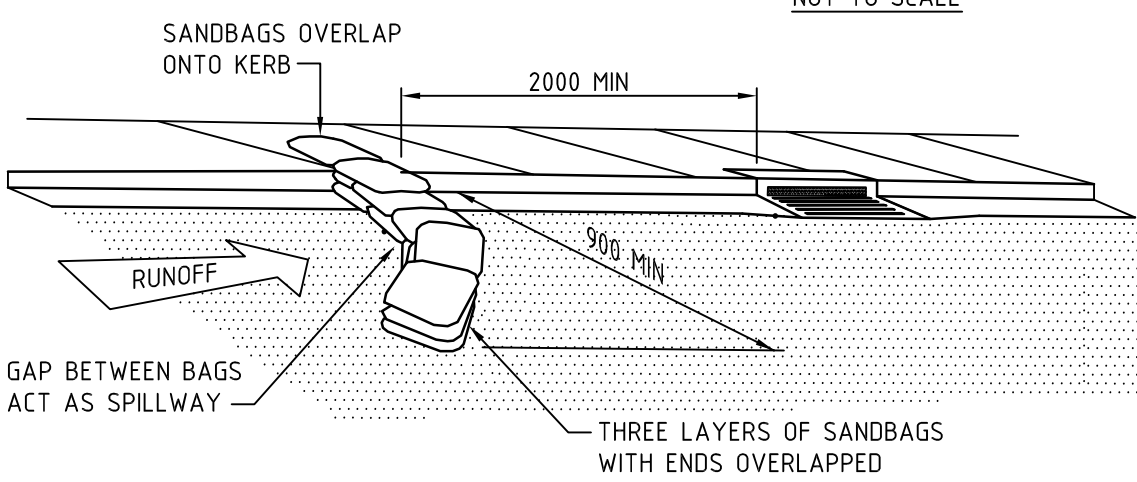
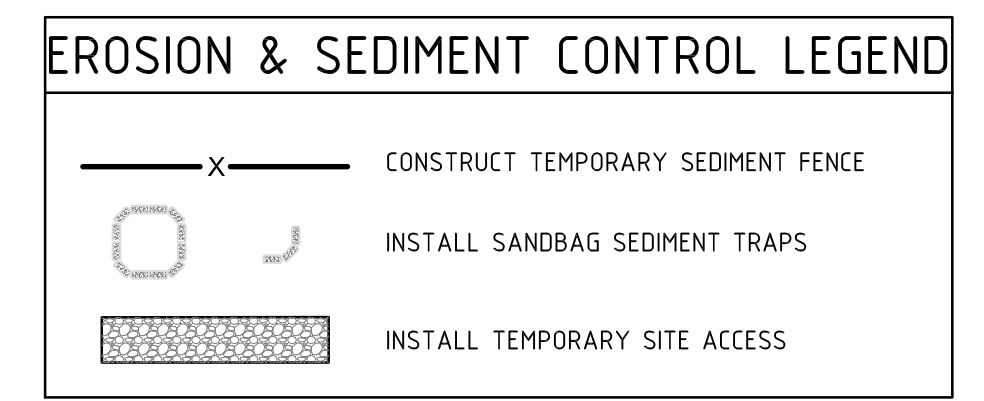
Rev	Date	Drawn	Description	CHK'd	App'd
P1	13-11-12	HSW	ISSUED FOR P.A.	-	XXXX

PLAN  
SCALE 1:250

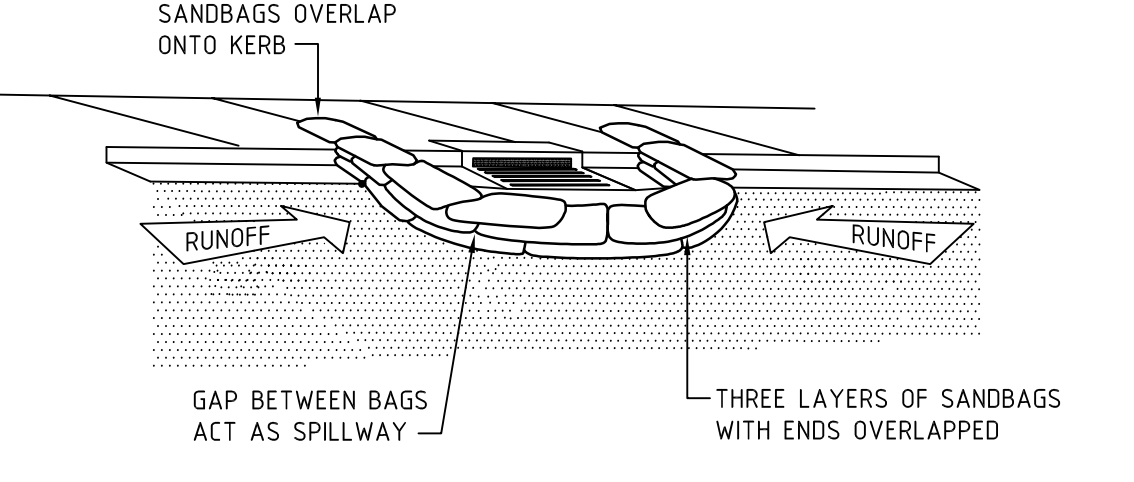
**NOTE:**  
ALL INTERNAL DRAINAGE TO BE CO-ORDINATED AND RELEVANT EROSION AND SEDIMENT CONTROL DEVICES IMPLEMENTED.



**SEDIMENT FENCE (GEOTEXTILE FILTER FABRIC)**  
NOT TO SCALE

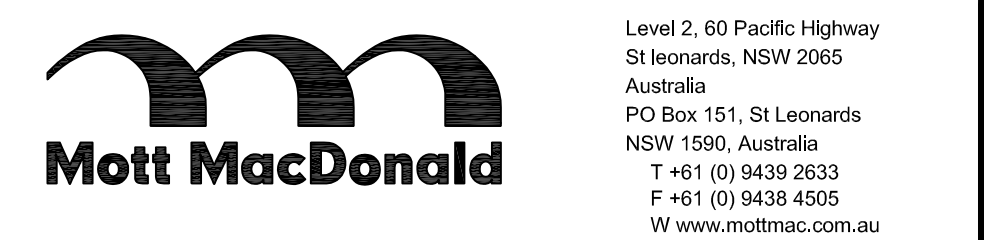


**SEDIMENT TRAP FOR KERB INLET (ON GRADE - SANDBAG)**  
NOT TO SCALE



**SEDIMENT TRAP FOR KERB INLET (AT LOW POINT - SANDBAG)**  
NOT TO SCALE

SOIL AND WATER MANAGEMENT NOTES	
<p><b>SWM1</b> THIS IS A CONCEPTUAL SOIL AND WATER MANAGEMENT PLAN (SWMP) ONLY, AND SHOWS A POSSIBLE WAY OF MANAGING SOIL EROSION. THE CONTRACTOR SHALL PREPARE A DETAILED PLAN AND OBTAIN APPROVAL FROM THE RELEVANT AUTHORITY - PRIOR TO THE COMMENCEMENT OF ANY WORKS.</p> <p><b>SWM2</b> THIS PLAN IS TO BE READ IN CONJUNCTION WITH THE ENGINEERING PLANS, AND ANY OTHER PLANS, WRITTEN INSTRUCTIONS, SPECIFICATION OR DOCUMENTATION THAT MAY BE ISSUED AND RELATING TO DEVELOPMENT OF THE SUBJECT SITE.</p> <p><b>SWM3</b> THE CONTRACTOR WILL ENSURE THAT ALL SOIL AND WATER MANAGEMENT WORKS ARE CONSISTENT WITH "MANAGING URBAN STORMWATER - SOILS AND CONSTRUCTION" - ALSO KNOWN AS "THE BLUE BOOK".</p> <p><b>SWM4</b> ALL BUILDERS AND SUB-CONTRACTORS SHALL BE INFORMED OF THEIR RESPONSIBILITIES IN MINIMISING THE POTENTIAL FOR SOIL EROSION AND POLLUTION TO DOWNSLOPE LANDS AND WATERWAYS.</p> <p><b>SWM5</b> WATER WILL BE PREVENTED FROM ENTERING THE PERMANENT DRAINAGE SYSTEM UNLESS IT IS RELATIVELY SEDIMENT FREE, IE THE CATCHMENT AREA HAS BEEN PERMANENTLY LANDSCAPED AND/OR ANY LIKELY SEDIMENT HAS BEEN FILTERED THROUGH AN APPROVED STRUCTURE.</p> <p><b>SWM6</b> "SEDIMENT" FENCING WILL BE INSTALLED AS INDICATED ON THE PLANS AND AT THE DIRECTION OF SITE SUPERINTENDENT TO ENSURE CONTAINMENT OF SEDIMENT. THE SEDIMENT FENCING WILL OUTLET OR OVERFLOW UNDER STABILISED CONDITIONS INTO THE SEDIMENT BASIN, TO SAFELY CONVEY WATER INTO A SUITABLE FILTERING SYSTEM SHOULD THE PORES IN THE FABRIC BLOCK.</p>	<p><b>SWM7</b> UNDERTAKE SITE DEVELOPMENT WORKS IN ACCORDANCE WITH THE ENGINEERING PLANS, WHERE POSSIBLE, PHASE DEVELOPMENT SO THAT LAND DISTURBANCE IS CONFINED TO AREAS OF WORKABLE SIZE.</p> <p><b>SWM8</b> TEMPORARY SOIL AND WATER MANAGEMENT STRUCTURES WILL BE REMOVED ONLY AFTER THE LANDS THEY ARE PROTECTING ARE REHABILITATED.</p> <p><b>SWM9</b> FINAL SITE LANDSCAPING WILL BE UNDERTAKEN AS SOON AS POSSIBLE AND WITHIN 20 WORKING DAYS FROM COMPLETION OF CONSTRUCTION ACTIVITIES.</p> <p><b>SWM10</b> AT LEAST WEEKLY AND AFTER EVERY RAIN FALL EVENT, THE CONTRACTOR WILL INSPECT THE SITE AND ENSURE THAT -</p> <p>DRAINS OPERATE EFFECTIVELY AND INITIATE REPAIR OR MAINTENANCE AS REQUIRED, SPILLED SAND (OR OTHER MATERIALS) IS REMOVED FROM HAZARDOUS AREAS, INCLUDING LIKELY AREAS OF CONCENTRATED OR HIGH VELOCITY FLOWS SUCH AS WATERWAYS, GUTTERS, PAVED AREAS AND DRIVEWAYS, SEDIMENT IS REMOVED FROM BASINS AND/OR TRAPS WHEN LESS THAN 20m<sup>3</sup> OF TRAPPING CAPACITY REMAIN PER 1000m<sup>2</sup> OF DISTURBED LANDS, AND/OR LESS THAN 500mm DEPTH REMAINS IN THE SETTLING ZONE. ANY COLLECTED SEDIMENT WILL BE DISPOSED IN AREAS WHERE FURTHER POLLUTION TO DOWNSLOPE LANDS AND WATERWAYS IS UNLIKELY. REHABILITATED LANDS HAVE EFFECTIVELY REDUCED THE EROSION HAZARD AND INITIATE UPGRADING OR REPAIR AS APPROPRIATE.</p>



**TITLE**  
BLOCKS 6 & 7, CENTRAL PARK COMMERCIAL & RETAIL ADAPTIVE RE-USE CONCEPT EROSION AND SEDIMENT CONTROL PLAN

Designed	DC	Eng check	AN
Drawn	HSW	Coordination	AN
Dwg check	DC	Approved	SAW
Scale at B1	Status	Rev	
1:250.	PRELIM		P1

Drawing Number  
MMD-300830-S-DR-CD-0102