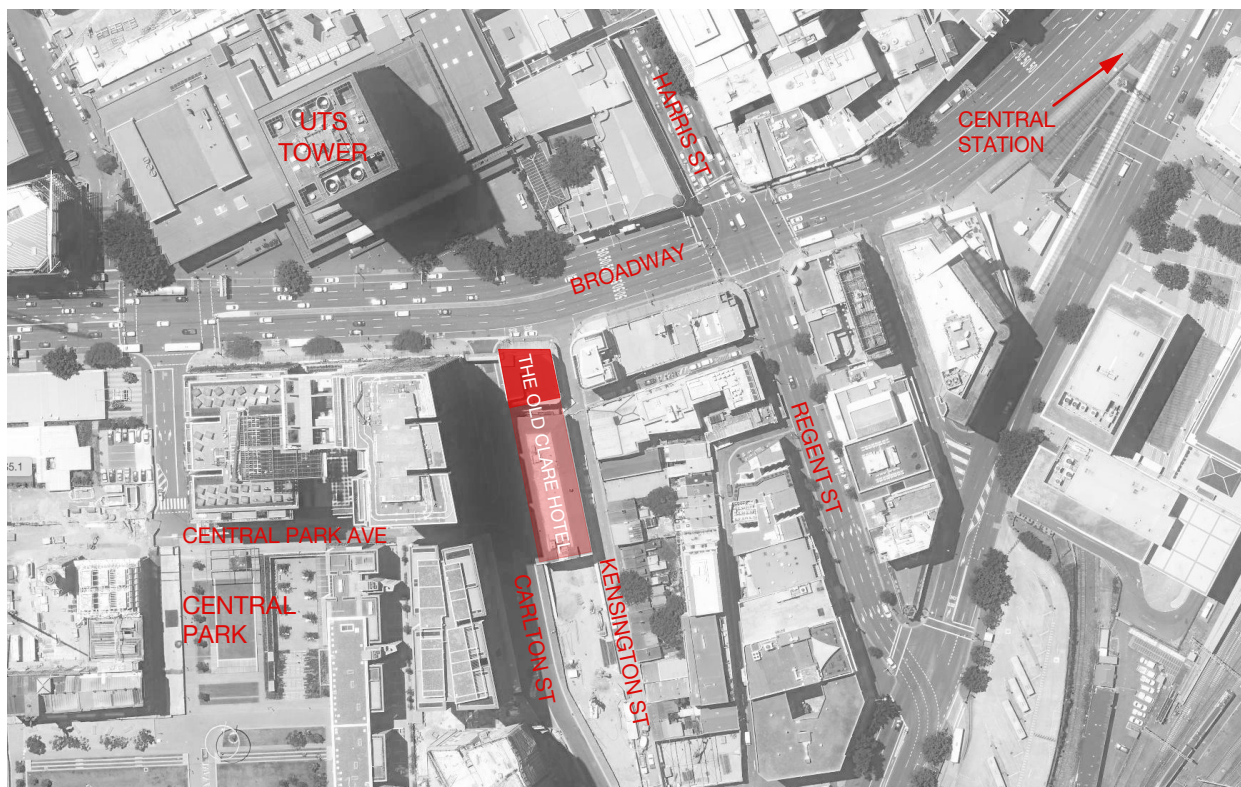


THE OLD CLARE HOTEL

S4.55 Modification for Change of Use of Existing Spaces.

DRAWING SCHEDULE

No.	DRAWING NAME	SCALE @ A3	No.	DRAWING NAME	SCALE @ A3
A-000	DRAWING SCHEDULE, LOCATION PLAN	NTS	A-100	LEVEL 1 FLOOR PLAN	1:100
A-010	GROUND FLOOR PLAN	1:200	A-101	LEVEL 2 FLOOR PLAN - NORTH	1:100
A-011	LEVEL 1 EXISTING FLOOR PLAN	1:100	A-102	LEVEL 2 FLOOR PLAN - SOUTH	1:100
A-012	LEVEL 2 EXISTING FLOOR PLAN	1:200	A-110	LEVEL 1 PROPOSED PLAN	1:200
A-013	LEVEL 2 EXISTING PART PLAN - NORTH	1:100	A-111	LEVEL 2 PROPOSED PLAN	1:200
A-014	LEVEL 2 EXISTING PART PLAN - SOUTH	1:100	A-150	ROOM 1.07 HERITAGE WORKS DETAIL	1:50
			A-200	LONG SECTION	1:200



LOCATION PLAN (NTS)

REV	DATE	AMENDMENTS
A	16.11.18	A-110 and A-111 Added

LEGEND

CONSULTANTS
 PLANNING : Planning Lab
 giovanni@planninglab.com.au
 BCA : City Plan Services
 chrism@cityplan.com.au
 FIRE : Mobius Fire
 daniel@mobiusfire.com.au
 HERITAGE : Paul Davies Heritage
 cheryk@heritage-architects.com.au

PROJECT
 THE OLD CLARE HOTEL
 CHANGES OF USE APPLICATION

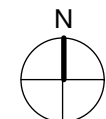
CLIENT
 Sonrac Developments Pty. Ltd.
 1 Kensington St Chippendale, NSW 2008
 Email : timo.bures@theoldclarehotel.com.au

HÜPPAUF CHESTERMAN
 architects Pty Ltd
 NSW REGISTRATION NO. 6891

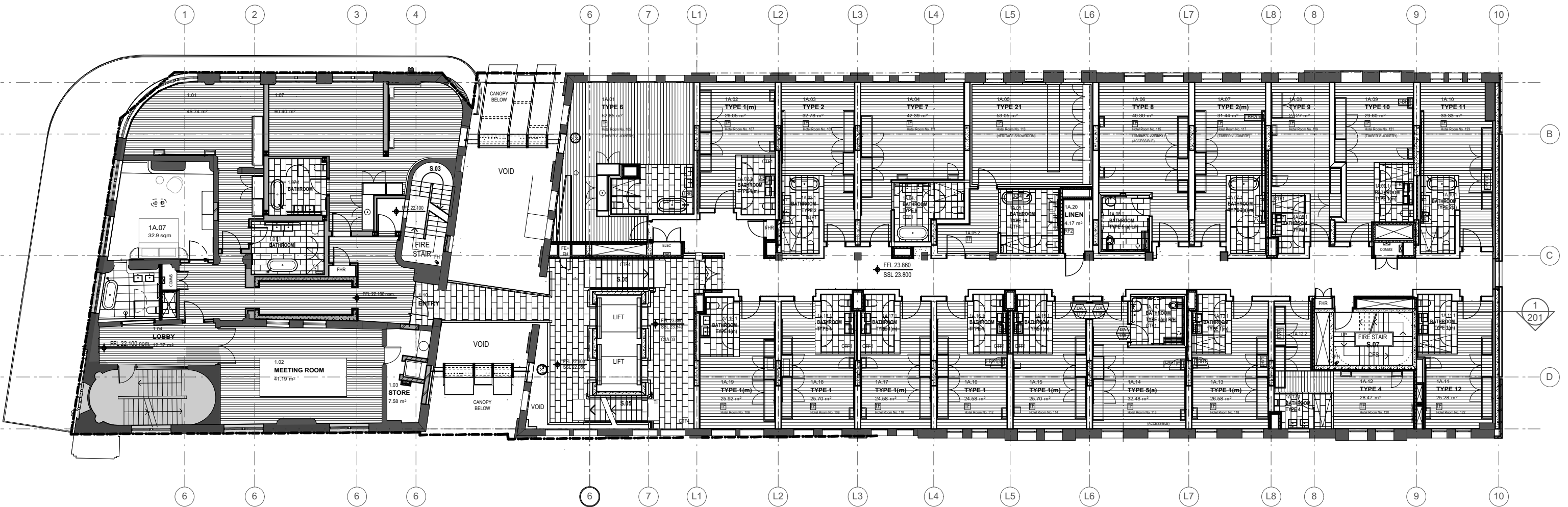
412 Wilson Street Darlington 2008 ABN 93 604 483 301
 Email : johnchesterman@tpg.com.au

DRAWING
 TITLE PAGE
 LOCATION PLAN

DATE SCALE DWG NUMBER
 SEPT 2018 @ A3 A-000



ISSUE
 S 4.55 MOD
REVISION DATE
 16.11.18
REVISION
 A



REV DATE AMENDMENTS

LEGEND

CONSULTANTS
 PLANNING : Planning Lab
 giovanni@planninglab.com.au
 BCA : City Plan Services
 chrism@cityplan.com.au
 FIRE : Mobius Fire
 daniel@mobiusfire.com.au
 HERITAGE : Paul Davies Heritage
 cheryk@heritage-architects.com.au

PROJECT
 THE OLD CLARE HOTEL
 CHANGES OF USE APPLICATION
CLIENT
 Sonrac Developments Pty. Ltd.
 1 Kensington St Chippendale, NSW 2008
 Email : timo.bures@theoldclarehotel.com.au

HÜPPAUF CHESTERMAN
 NSW REGISTRATION NO. 6891 architects Pty Ltd
 412 Wilson Street Darlingtown 2008 ABN 93 604 483 301
 Email : johnchesterman@tpg.com.au

DRAWING
 LEVEL 1 - PROPOSED
 FLOOR PLAN

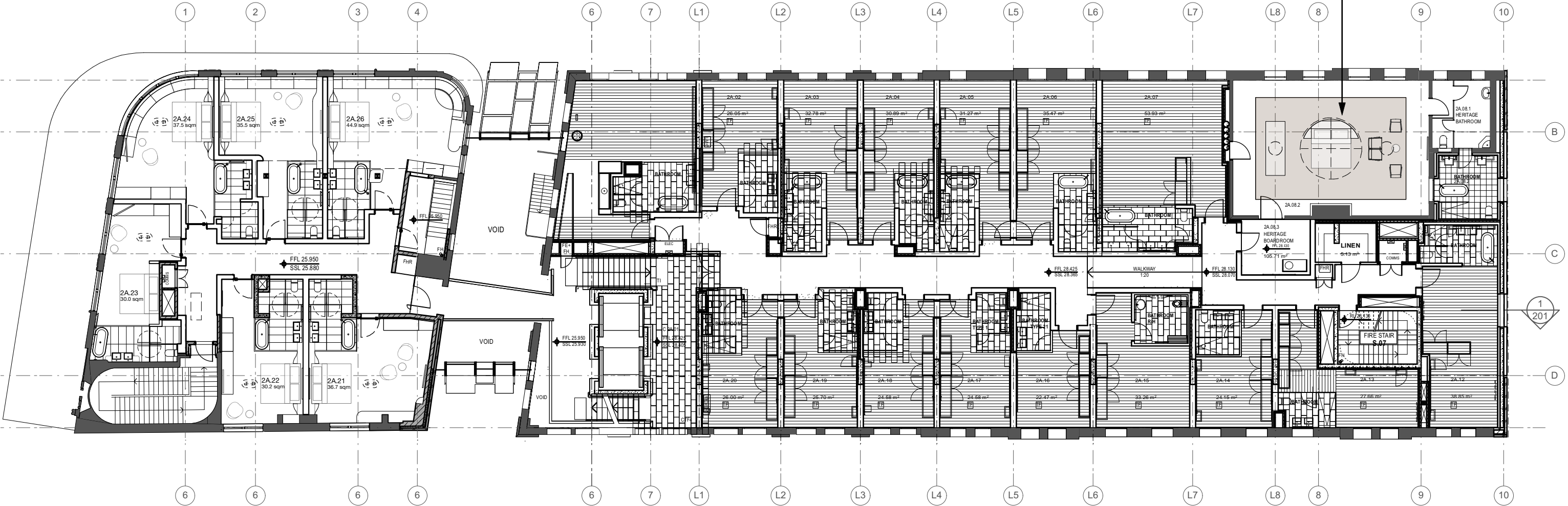
DATE SCALE DWG NUMBER
 SEPT 2018 1:200 @ A3 A-015



ISSUE
 S 4.55 MOD
REVISION DATE
 16.11.18
REVISION
 -

DO NOT SCALE DRAWINGS. USE FIGURED DIMENSIONS. ALL DIMENSIONS TO BE CHECKED ON SITE.

CUB SUITE - HERITAGE LISTED BOARDROOM AND BATHROOM



LEVEL 2 FLOOR AREA 1,119.0 sqm
 PROPOSED FUNCTION AREA 105.7 sqm

REV	DATE	AMENDMENTS
-	-	-

DO NOT SCALE DRAWINGS. USE FIGURED DIMENSIONS. ALL DIMENSIONS TO BE CHECKED ON SITE.

LEGEND

CONSULTANTS
 PLANNING : Planning Lab
 giovanni@planninglab.com.au
 BCA : City Plan Services
 chrism@cityplan.com.au
 FIRE : Mobius Fire
 daniel@mobiusfire.com.au
 HERITAGE : Paul Davies Heritage
 cheryk@heritage-architects.com.au

PROJECT
 THE OLD CLARE HOTEL
 CHANGES OF USE APPLICATION
CLIENT
 Sonrac Developments Pty. Ltd.
 1 Kensington St Chippendale, NSW 2008
 Email : timo.bures@theoldclarehotel.com.au

HÜPPAUF CHESTERMAN
 NSW REGISTRATION NO. 6891 architects Pty Ltd
 412 Wilson Street Darlingtown 2008 ABN 93 604 483 301
 Email : johnchesterman@tpg.com.au

DRAWING
 LEVEL 2 - PROPOSED FLOOR PLAN
DATE SEPT 2018 **SCALE** 1:200 @ A3 **DWG NUMBER** A-016
ISSUE S 4.55 MOD **REVISION DATE** 16.11.18 **REVISION** -