

BLOCK 3A, CENTRAL PARK: ADAPTIVE REUSE OF THE CLARE HOTEL AND ADMINISTRATION BUILDING



LEGEND

Legend	Keyword/short Description
AC	Air-Conditioning
ACC	Accessible
AFFL	Above Finished Floor Level
AH	Access Hatch
AHFL	2hr FRR access hatch with pull down ladder
AS	Adjustable Shelf
ASK	Aluminium Skirting
AU	Audio Visual
BT	Lighting bollards in foyer
BC	Baby Change Table
BN 1	Bin Type 1 - Under sink garbage bin
BN 2	Bin Type 2 - wall mounted garbage bin
BN 3	Bin Type 3 - floor garbage bin
BKKS	Blockwork fair faced
BL	Blockwork fair faced
BLD	Roiler Blind
BLP	Blockwork Paint finish
BLRP	Blockwork, Rendered and Painted
BM1	Metal Clad Balustrade
BR	Brickwork Fair Faced
BRF	Recycled Brick Floor
BRP	Brickwork Painted
BT	Benchtop
B11	Bath - type 1
B12	Bath - type 2
B13	Bath - type 3
CC	20mm Cable sleeve
CFC	Compressed Fibre cement
CFS	Concrete Steel trowel Finish
CWV	Concrete Wood Float Finish
CO2	Class 20 Off form Concrete
CO3P	Class 3 Off form Concrete, paint finish
COM	Concrete Metal Formwork Slab
COMS	Communications Cupboard
COR	Corian
COS	Check On Site
CPT	Carpet
CPT1	Carpet - Type 1
CPT2	Carpet - Type 2
CPT3	Carpet - Type 3
CPT4	Carpet - Type 4
CPT5	Carpet - Type 5
CPT6	Carpet - Type 6
CPT7	Carpet - Type 7
CPT7A	Carpet - Type 7A
CT	Cooktop
CTC	Ceramic tile corner
CTF1	Ceramic Tiles Floor 1
CTF2	Ceramic Tiles Floor 2
CTF3	Ceramic Tiles Floor 3
CTF4	Ceramic Tiles Floor 4
CTF5	terazzo Tiles Floor 5
CTH	Ceramic Tiles Heritage matched
CTS	Ceramic Tile Skirting
CTW1	Ceramic Tiles Wall 1
CTW2	Ceramic Tiles Wall 2
CTW2A	Ceramic Tiles Wall 2
CTW3	Ceramic Tiles Wall 3
CTW4	Ceramic Tiles Wall 4
CTW5	Ceramic Tiles Wall 5
CTW6	Ceramic Tiles Wall 6
CU1	Curtain rail type 1
CU2	Curtain rail type 2
CV	Curtain Wall facade system
DB	Distribution Board
DNS	Door number Signage
DP	Down Pipe
DR	Drencher
DS1 - floor	Door stop type 1 - floor
DS2 - wall	Door stop type 2 - wall
DW	Dishwasher
ECF	Electrical Ceiling Fan
EF	Extraction Fan
ELEC	Electrical Cupboard
F1	60 FRL
F1.5	60 FRL
F2	120 FRL
FAN1	Ceiling Fan - Type 1
FAN2	Ceiling Fan - Type 2
FBBV	Fire Bypass Booster Valve
FC	Set Fibre Cement 6mm
FCBC	Fibre cement Barenstone Ceiling
FCBE	Fibre cement Barenstone External
FCR	FC on roof terrace roofs
FCLR	Fire Curtain
FDF-1	Fire door internal 1hr FRR
FDF-1-P	Fire door internal 1hr FRR, pivot
FDF-2	Fire door internal 2hr FRR
FDF-2-H	Fire door internal 2hr FRR, with highlight
FDF-2-P	Fire door internal 2hr FRR, pivot
FE	Fire extinguisher
FFL	Finished Floor Level
FG	Floor grate
FHR	Fire Hose Reel
FM	Floor Mat
FP	Fabric clad Panel
FR	Fridge
FRL	Fire Resistant Level
FSK	Flush Skirting
FSL	Finished Structural Level
FW 1	Floor Waste - type 1
FW 2	Floor Waste - type 2
FWB	Floor Waste Bin
GB	Glass Balustrade
GCB	Glass Colour Backed
GCU	Garbage Compaction Unit
GL	Glass Translucent
GLA	Glass with graphics interlayer
GL3	Glass Translucent with insulated backpan
GL4	Glass with interlayer 1
GL5	Glass with interlayer 2
GL6	Glass with interlayer 3
GL7	Glass interlayer 4(mirror)
GLC	Glass Clear
GLFP	Frameless glass door, pivot, access
GLFP-D	Frameless glass door, pivot, double doors
GLFP-S	Frameless glass door, pivot, single door
GLFP-SH	Frameless glass door, pivot, with side and high
GLFS-A	Frameless translucent sliding glass door, aco
GLFS-C	Frameless translucent sliding glass door, cavt
GLFS-E	Frameless clear sliding glass door, automatic
GLFS-S	Frameless translucent sliding glass door, surf
GLS	Glass Steel Framed Clear
GLSS	Glass steel framed sliding door
GLSK	Glass Skylight
GPF	Glass Pool Fence
GPFG	Glass pool fence as hydraulic hinged gate
GPO	General power outlet
GRT1	Fixture - Grab Rail 1 - accessible
GRT2	Fixture - Grab Rail 2 - accessible
GRT3	Fixture - Grab Rail 3 - ambulant
GSS1	Glass Shower Screen type 1
GSS2	Glass Shower Screen type 2
GTD-D	Timber glazed door, double
GTD-S	Timber glazed door, single
GW	Glazed Wall System
H	Hydraulic riser
HD1	Hand Dryer - type 1
HD2	Hand Dryer - type 2
HJ	Horizontal Joints
HK	Hook - hatch fitted
HK1	Hook - type 1
HK2	Hook - type 2
HP	Reinforced Hebel Powerpanel Ceiling
HR	Hanging Rail
HRM	Steel pipe balustrade fire stairs
HRM2	Steel pipe handrail
HRM3	Stainless Steel Handrail
HRT	Handrail Timber
JP	Joinery Full
JSC	Joinery Steel Clear Finish
KP	Kick Plate
L	Laminate Finish

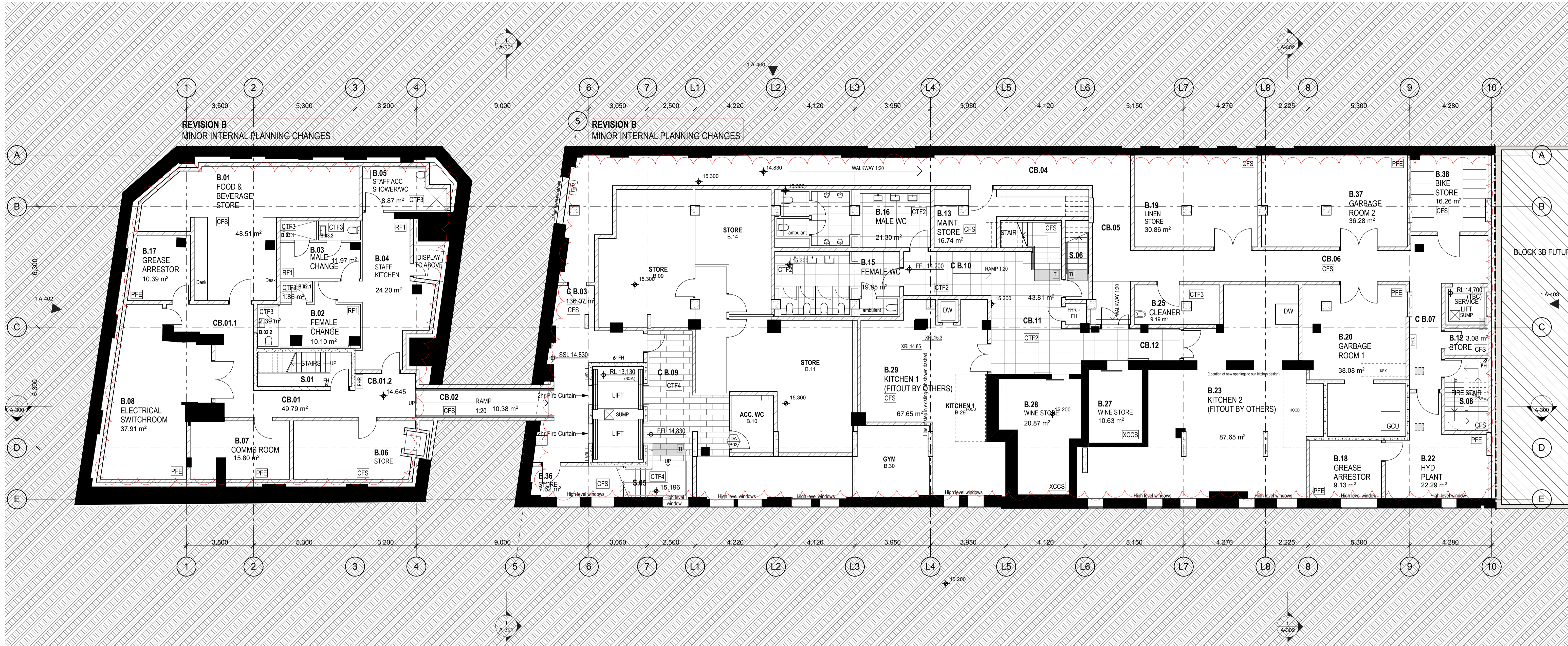
Legend	Keyword/short Description
LFWD	Linear AC Gritle
LG	Linear AC Gritle
LF	Light Fitting
M	Mechanical Riser
MAC	Metal aluminium Canopy
MCS	Metal composite sheeting - Alucobond
MCS1	Metal composite sheeting - Alucobond
MCS2	Metal composite sheeting - Alucobond
MCS3	Metal composite sheeting - Alucobond
MG	Metal Gate
MIR	Mirror
MIRS	Sandblasted mirror
MFD	Metal Framed Display Case
MLF	Metal Louvre, Fixed
MLJ	Metal Louvre Joinery
MPL	Metal Lift door reveal
MRT	Metal Roof corrugated
MR2	Metal Roof Kipitok
MREB	Metal Roof Box Gutter
MRE G	Metal Eaves Gutter
MRJ	Metal Reception Joinery
MRZ	Metal Roof Zinc
MSK	Metal Skirting
MSKD	Metal Skirting Ducted
PA	13mm Plasterboard paint finish
PBD	15mm Plasterboard wall mounted
PBM	Plasterboard Moisture Resistant
PBRMS	Plasterboard Moisture Resistant Suspended
PBS	13mm Plasterboard Suspended Ceiling
PC	Concrete pavers
PFS	Floor Sealer
PP	2 pack Polyurethane Paint finish to joinery
PTD 1	Paper Towel Dispenser type 1
RCM	Marbleised render to the roof
RCP	Render Cement paint finish
RFT	Resilient Finish Type 1
RFS	Resilient Finish Skirting
RF2	Resilient Finish Type 2 Marmoleum
RF3	Resilient Finish Type 2 Marmoleum
RL	Reduced Level
RPS	Plaster sat finish
RWH	Rain Water Head
S1	Safe
SC	Steel plate Clear finish
SC1	Solid Core Internal Door
SC1-MDF	Solid Core Internal Door, MDF
SC1-ML	Solid Core Internal Door with louvre highlight
SC1-PLY	Solid Core Internal Door, Plywood
SC2	Solid Core Internal Door, Armesoles
SHF1	Shower Shelf
SHF2	Shower Shelf accessible
SHR	Shower - type 1, Accessible
SHR2	Shower - type 2, Accessible
SHR3	Shower - type 3
SHR4	Shower - type 4
SHR5	Shower type 5 - wall mounted rose
SHRA	Timber Shower Seat
SKC	Cleaner Sink
SKK	Kitchen Sink
SP	Bar sink
SP1	Soap Dispenser - type 1
SP2	Soap Dispenser - type 2 Accessible
SP3	Soap Dispenser - type 3
SPP	Steel plate paint finish
SS	Stainless Steel
SSP	Stainless Steel Polished Finish
ST1	Stone Type 1
ST2	Stone Type 2
ST3	Stone Type 3
STS	New Sandstone to match existing
STB	Level 1 Park Room Screen
TB	Timber Bench Seating - Staff
TBB1	Bench mounted bath spout
TBR	Floor mounted bath spout
TDD	Timberdecking board clad gate clad
TSN	Stair nosings
TD	Timber Deck
TF	Timber flooring
TF1	Timber block parquet flooring
TI	Tactile Indicators
TSN	Tactile Stair Nosings
TME	To Match Existing
TOW	Top of wall
TP	Toilet Partitions
TPB1	Tap basin - type 1
TPB2	Tap basin - type 2 - accessible
TPB3	Tap basin - type 3
TPB4	Tap basin - type 4
TPH1	Toilet Paper Holder type 1
TPH2	Toilet Paper Holder type 2
TPW1	Wall mounted mixer - type 1
TPW2	Wall mounted mixer - type 2, access
TPW3	Wall mounted mixer - type 3
TPW4	Wall mounted mixer - type 4
TR1	Towel rail - type 1 floor
TR2	Towel rail - type 2 floor
TR3	Towel rail - type 3 wall
TR4	Towel rail - type 4 wall
TR5	Towel rail - Type 5 wall
TS	Timber Solid
TSC	Timber Screen
TSHS	Timber Shower Seat
TSK	Timber Skirting
TV	Timber Veneered Joinery
TVS	Television
UO	Unless Indicated Otherwise
UR	Urinal
VJ	Vertical Joints
VSS	Vanity Shelf
WB1	Wash Basin - Type 1
WB2	Wash Basin - Type 2 - Acc (check dwgs if LH or RH before ordering)
WB3	Wash Basin - Type 3
WB4	Wash Basin - Type 4
WB5	Wash Basin - Type 5
WB6	Wash Basin - Type 6
WC1	Toilet - Type 1
WC2	Toilet - Type 2 - Acc
WC3	Toilet - Type 3 - Ambulant
WC4	Toilet - Type 4
WC5	Toilet - Type 5
WC6	Toilet - Type 6
WS1	Waterproof System Type 1(external)
WS2	Waterproof System Type 2 well area
WS3	Waterproof System Type 3 tanking
WS4	Waterproof System Type 4 CALLITE
WS5	Waterproof System Type 5 Negative
WT	Timber Framed Window
X	Existing
XBR	Existing Brickwork
XBR1	Existing Brickwork, existing plaster removed
XBR2R	Salvaged Bricks
XBR3R	Existing Brickwork, make good Render, Paint
XCSB	Existing Concrete sand blast finish
XCC	Existing Concrete Clean
XCCS	Existing Concrete Clean and Seal
XCT	Existing Tiles
XDSR	Existing door salvaged and re-used
XPC	Existing Plaster ceiling Made good
XST	Existing Soffit - Timber structure cleaned
XST	Existing Stone
XTF	Existing timber flooring
XW	Existing Window

DRAWING LIST

DWG. NO.	DESCRIPTION	REV
A-000	COVER PAGE	B
A-001	CONTEXT PLAN	A
A-002	SITE ANALYSIS	A
A-003	3D IMAGES	A
A-100	BASEMENT	B
A-101	GROUND FLOOR	B
A-102	LEVEL 1	B
A-103	LEVEL 2	B
A-104	LEVEL 3	B
A-105	LEVEL 4	B
A-106	POOL DECK	B
A-107	ROOF	B
A-300	SECTION 01	B
A-301	SECTION 02	B
A-302	SECTION 03	B
A-400	EAST ELEVATION	B
A-401	WEST ELEVATION	B
A-402	NORTH ELEVATION	B
A-700	MATERIAL SCHEDULE	B

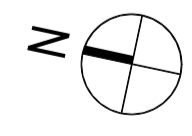
REVISION B
MATERIALS LIST EXPANDED

DATE	REV	NOTES :	HERITAGE	CIVIL ENGINEER	ELECTRICAL ENGINEER	MECHANICAL ENGINEER	PCA	CLIENT:	PROJECT :	ARCHITECT	DRAWING TITLE	DRAWN BY
02/11/12	A	ISSUED FOR PLANNING APPROVAL	PAUL DAVIES PTY LTD T: 02 9618 5941 E: paul@heritage-architects.com.au	MOTT MACDONALD T: 02 9439 2633 E: rob.beck@wspgroup.com.au	WSP BUILDINGS T: 02 8907 0900 E: rob.beck@wspgroup.com.au	WSP BUILDINGS T: 02 8907 0900 E: rob.beck@wspgroup.com.au	CITY PLAN SERVICES T: 02 8270 3500 E: cplan@cityplan.com.au	T:	BLOCK 3A, CENTRAL PARK: ADAPTIVE REUSE OF THE CLARE HOTEL AND ADMINISTRATION BUILDING	TONKIN ZULAIKHA GREER ARCHITECTS 117 Reservoir Street Surry Hills, NSW 2010 P: (02) 9215 4900 F: (02) 9215 4901 EMAIL: john@tzg.com.au	DRAWING LIST AND LEGEND	JH
15/10/13	B	SECTION 75W AMMENDMENTS	ESD WSP BUILT ECOLOGY T: 02 9439 0900 E: alan.davis@wspgroup.com.au	MOTT MACDONALD T: 02 9439 2633 E: switshier@hugestrueman.com.au	WSP BUILDINGS T: 02 8907 0900 E: rob.beck@wspgroup.com.au	WSP BUILDINGS T: 02 8907 0900 E: rob.beck@wspgroup.com.au	TOWN PLANNER JBA PLANNING T: 02 9956 6962 E: sjouge@jba.com.au	PROJECT NO : 12016	ARCHITECTS	ARCHITECTS	SCALE	DATE JUNE 2013
											PHASE FOR PLANNING APPROVAL	REVISION B



1 BASEMENT
1:100

1 A-401



DATE 02/11/12	REV A	NOTES ISSUED FOR PLANNING APPROVAL	NOTES: Do not scale off drawings. Use figured dimensions only. Report any discrepancies to the architect. These designs, plans, specifications and the copyright therein are the property of Tonkin Zulaikha Greer Architects Pty Ltd, and must not be reproduced or copied wholly or in part without written permission of Tonkin Zulaikha Greer Architects Pty Ltd.	HERITAGE PAUL DAVIES PTY LTD T: 02 9618 5941 E: paul@heritage-architects.com.au	CIVIL ENGINEER MOTT MACDONALD T: 02 9439 2633 E: switshier@hugestrueman.com.au	ELECTRICAL ENGINEER WSP BUILDINGS T: 02 8907 0900 E: rob.beck@wspgroup.com.au	MECHANICAL ENGINEER WSP BUILDINGS T: 02 8907 0900 E: rob.beck@wspgroup.com.au	PCA CITY PLAN SERVICES T: 02 8270 3500 E: chrism@cityplan.com.au	CLIENT: SONRAC DEVELOPMENTS	PROJECT: BLOCK 3A, CENTRAL PARK: ADAPTIVE REUSE OF THE CLARE HOTEL AND ADMINISTRATION BUILDING PROJECT NO: 12016	ARCHITECT TONKIN ZULAIKHA GREER ARCHITECTS 117 Reservoir Street Surry Hills, NSW 2010 ABN: 4600272349 P: (02) 9215 4900 F: (02) 9215 4901 EMAIL: john@tզg.com.au	DRAWING TITLE BASEMENT	DRAWN BY JH
28/06/13	B	SECTION 75W AMMENDMENTS		ESD WSP BUILT ECOLOGY T: 02 8907 0900 E: alan.davis@wspgroup.com.au	STRUCTURAL ENGINEER MOTT MACDONALD T: 02 9439 2633 E: switshier@hugestrueman.com.au	HYDRAULIC ENGINEER WSP BUILDINGS T: 02 8907 0900 E: rob.beck@wspgroup.com.au	FIRE ENGINEERING WSP BUILDINGS T: 02 8907 0900 E: rob.beck@wspgroup.com.au	TOWN PLANNER JBA PLANNING T: 02 9956 6962 E: sgruge@jba-planning.com.au	SCALES 1:100 @ A1 1:200 @ A3	PHASE FOR PLANNING APPROVAL	DRAWING NO A-100	DATE JULY 2013	REVISION B

REVISION B
 INTERNAL PLANNING CHANGES - 2 rooms
 added in lieu of meeting facilities
 WESTERN ENTRY CANOPY SIZE REDUCED



DATE	REV	NOTES	NOTES:	HERITAGE	CIVIL ENGINEER	ELECTRICAL ENGINEER	MECHANICAL ENGINEER	PCA	CLIENT:	PROJECT:	ARCHITECT	DRAWING TITLE	DRAWN BY
02/11/12	A	ISSUED FOR PLANNING APPROVAL	Do not scale off drawings. Use figured dimensions only. Report any discrepancies to the architect. These designs, plans, specifications and the copyright therein are the property of Tonkin Zulaikha Greer Architects Pty Ltd, and must not be reproduced or copied wholly or in part without written permission of Tonkin Zulaikha Greer Architects Pty Ltd.	PAUL DAVIES PTY LTD T: 02 9618 5941 E: paul@heritage-architects.com.au	MOTT MACDONALD T: 02 9439 2633 E: switshier@hugestrueman.com.au	WSP BUILDINGS T: 02 8907 0900 E: rob.beck@wspgroup.com.au	WSP BUILDINGS T: 02 8907 0900 E: rob.beck@wspgroup.com.au	CITY PLAN SERVICES T: 02 8270 3500 E: chrism@cityplan.com.au	TONKIN ZULAIKHA GREER ARCHITECTS 117 Reservoir Street Surry Hills, NSW 2010 ABN: 4600272349 P: (02) 9215 4900 F: (02) 9215 4901 EMAIL: john@tzg.com.au	ADAPTIVE REUSE OF THE CLARE HOTEL AND ADMINISTRATION BUILDING PROJECT NO: 12016	117 Reservoir Street Surry Hills, NSW 2010 ABN: 4600272349 P: (02) 9215 4900 F: (02) 9215 4901 EMAIL: john@tzg.com.au	LEVEL 1 SCALES 1:100 @ A1 PHASE FOR PLANNING APPROVAL	JH JC JULY 2013 B
28/06/13	B	SECTION 75W AMMENDMENTS		ESD WSP BUILT ECOLOGY T: 02 8907 0900 E: alan.davis@wspgroup.com.au	STRUCTURAL ENGINEER MOTT MACDONALD T: 02 9439 2633 E: switshier@hugestrueman.com.au	HYDRAULIC ENGINEER WSP BUILDINGS T: 02 8907 0900 E: rob.beck@wspgroup.com.au	FIRE ENGINEERING WSP BUILDINGS T: 02 8907 0900 E: rob.beck@wspgroup.com.au	TOWN PLANNER JBA PLANNING T: 02 9956 6962 E: sjouge@jba.com.au	SONRAC DEVELOPMENTS		tonkin zulaikha greer architects	A-102	

REVISION B
MINOR INTERNAL PLANNING CHANGES

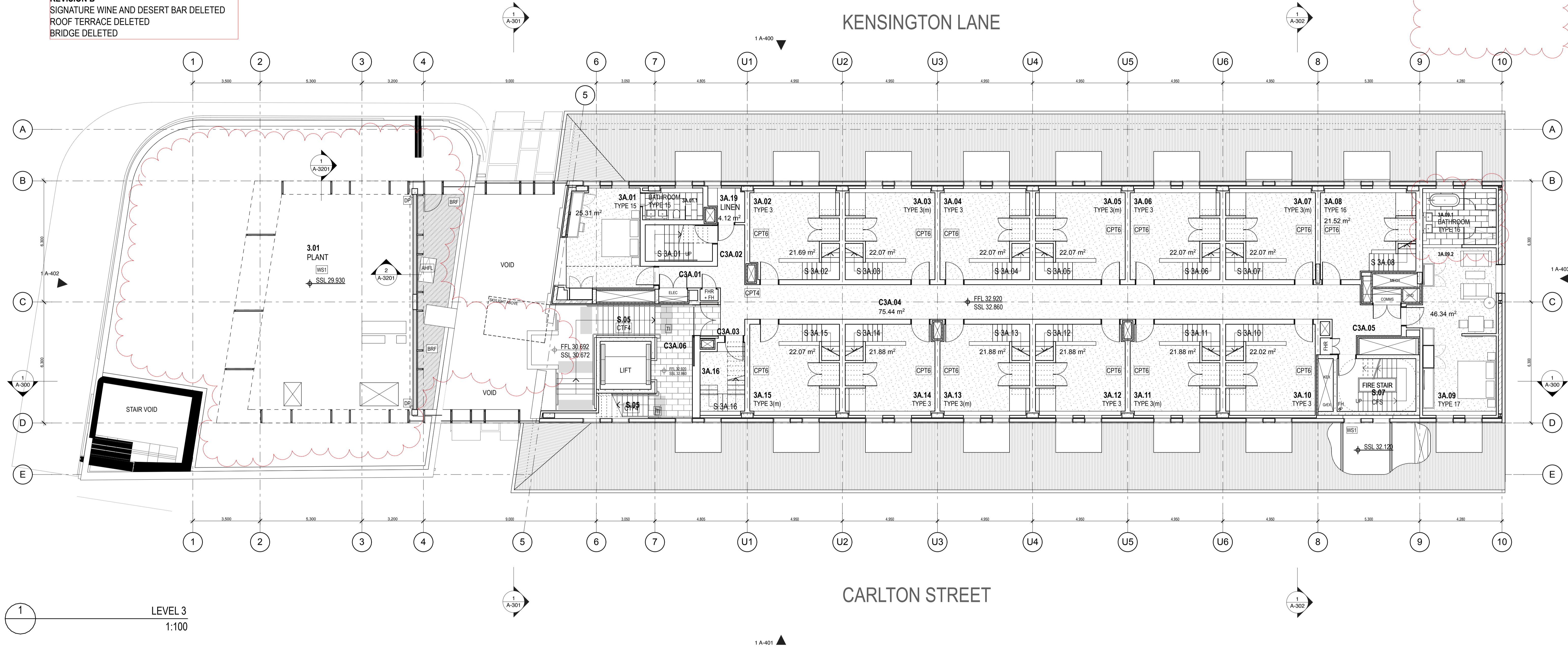


1
LEVEL 2
1:100

DATE	REV	NOTES	NOTES:	HERITAGE	CIVIL ENGINEER	ELECTRICAL ENGINEER	MECHANICAL ENGINEER	PCA	CLIENT:	PROJECT:	ARCHITECT	DRAWING TITLE	DRAWN BY
02/11/12	A	ISSUED FOR PLANNING APPROVAL	Do not scale off drawings. Use figured dimensions only. Report any discrepancies to the architect. These designs, plans, specifications and the copyright therein are the property of Tonkin Zulaikha Greer Architects Pty Ltd, and must not be reproduced or copied wholly or in part without written permission of Tonkin Zulaikha Greer Architects Pty Ltd.	PAUL DAVIES PTY LTD T: 02 9439 2633 E: paul.d@heritage-architects.com.au	MOTT MACDONALD T: 02 9439 2633 E: switshier@hugestrueman.com.au	WSP BUILDINGS T: 02 8907 0900 E: rob.beck@wspgroup.com.au	WSP BUILDINGS T: 02 8907 0900 E: rob.beck@wspgroup.com.au	CITY PLAN SERVICES T: 02 8270 3500 E: chriss@cityplan.com.au	T:	SONRAC DEVELOPMENTS	TONKIN ZULAIKHA GREER ARCHITECTS 117 Reservoir Street Surry Hills, NSW 2010 ABN: 4600272349 P: (02) 9215 4900 F: (02) 9215 4901 EMAIL: john@taz.com.au	LEVEL 2	JH
28/06/13	B	SECTION 75W AMMENDMENTS		ESD WSP BUILT ECOLOGY T: 02 8907 0900 E: alan.davis@wspgroup.com.au	STRUCTURAL ENGINEER MOTT MACDONALD T: 02 9439 2633 E: switshier@hugestrueman.com.au	HYDRAULIC ENGINEER WSP BUILDINGS T: 02 8907 0900 E: rob.beck@wspgroup.com.au	FIRE ENGINEERING WSP BUILDINGS T: 02 8907 0900 E: rob.beck@wspgroup.com.au	TOWN PLANNER JBA PLANNING T: 02 9956 6962 E: srgouge@jbaPlanning.com.au	SONRAC DEVELOPMENTS	BLOCK 3A, CENTRAL PARK: ADAPTIVE REUSE OF THE CLARE HOTEL AND ADMINISTRATION BUILDING PROJECT NO: 12016	greer tonkin zulaikha architects	1:100 @ A1	JC
												FOR PLANNING APPROVAL	DATE
												DRAWING NO	JULY 2013
												A-103	REVISION
													B

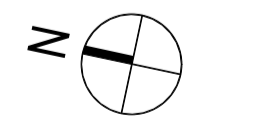
REVISION B
SIGNATURE WINE AND DESERT BAR DELETED
ROOF TERRACE DELETED
BRIDGE DELETED

REFER A_000 FOR LEGEND CODES



1 LEVEL 3
1:100

DATE	REV	NOTES :	NOTES:	HERITAGE	CIVIL ENGINEER	ELECTRICAL ENGINEER	MECHANICAL ENGINEER	PCA	CLIENT:	PROJECT :	ARCHITECT	DRAWING TITLE	DRAWN BY
02/11/12	A	ISSUED FOR PLANNING APPROVAL	Do not scale off drawings. Use figured dimensions only. Report any discrepancies to the architect. These designs, plans, specifications and the copyright therein are the property of Tonkin Zulaikha Greer Architects Pty Ltd, and must not be reproduced or copied wholly or in part without written permission of Tonkin Zulaikha Greer Architects Pty Ltd.	PAUL DAVIES PTY LTD T: 02 9618 5941 E: paul@heritage-architects.com.au	MOTT MACDONALD T: 02 9439 2633 E: switshier@hugestrueman.com.au	WSP BUILDINGS T: 02 8907 0900 E: rob.beck@wspgroup.com.au	WSP BUILDINGS T: 02 8907 0900 E: rob.beck@wspgroup.com.au	CITY PLAN SERVICES T: 02 8270 3500 E: chrism@cityplan.com.au	T:	SONRAC DEVELOPMENTS	TONKIN ZULAIKHA GREER ARCHITECTS 117 Reservoir Street Surry Hills, NSW 2010 ABN: 4600272349 P: (02) 9215 4900 F: (02) 9215 4901 EMAIL: john@tzg.com.au	LEVEL 3 SCALES 1:100 @ A1	JH
28/06/13	B	SECTION 75W AMMENDMENTS		ESD WSP BUILT ECOLOGY T: 02 8907 0900 E: alan.davis@wspgroup.com.au	STRUCTURAL ENGINEER MOTT MACDONALD T: 02 9439 2633 E: switshier@hugestrueman.com.au	HYDRAULIC ENGINEER WSP BUILDINGS T: 02 8907 0900 E: rob.beck@wspgroup.com.au	FIRE ENGINEERING WSP BUILDINGS T: 02 8907 0900 E: rob.beck@wspgroup.com.au	TOWN PLANNER JBA PLANNING T: 02 9956 6962 E: sgruge@jbaPlanning.com.au	SONRAC DEVELOPMENTS	ADAPTIVE REUSE OF THE CLARE HOTEL AND ADMINISTRATION BUILDING PROJECT NO : 12016	greer tonkin zulaikha architects	FOR PLANNING APPROVAL	JC
												DRAWING NO	DATE
												A-104	JULY 2013
												REVISION	REVISION
												B	B

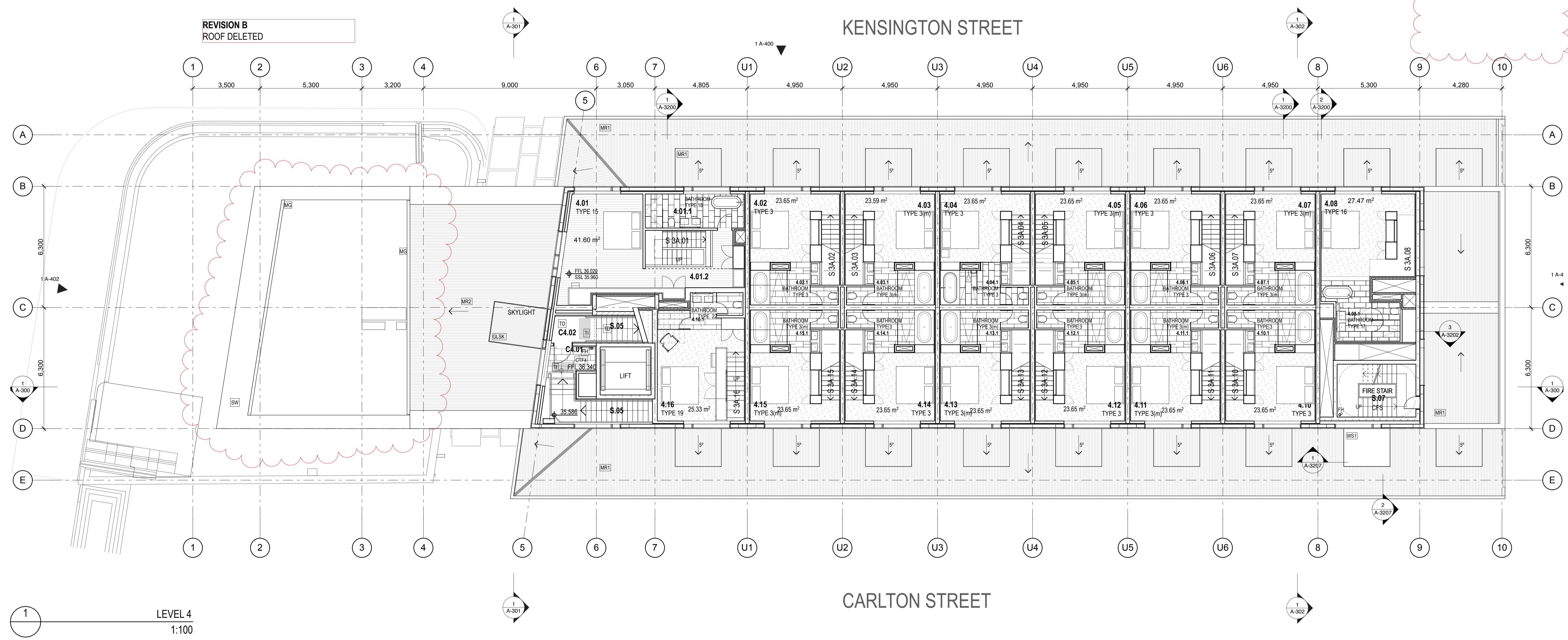


REFER A_000 FOR LEGEND CODES

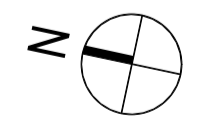
REVISION B
ROOF DELETED

KENSINGTON STREET

CARLTON STREET

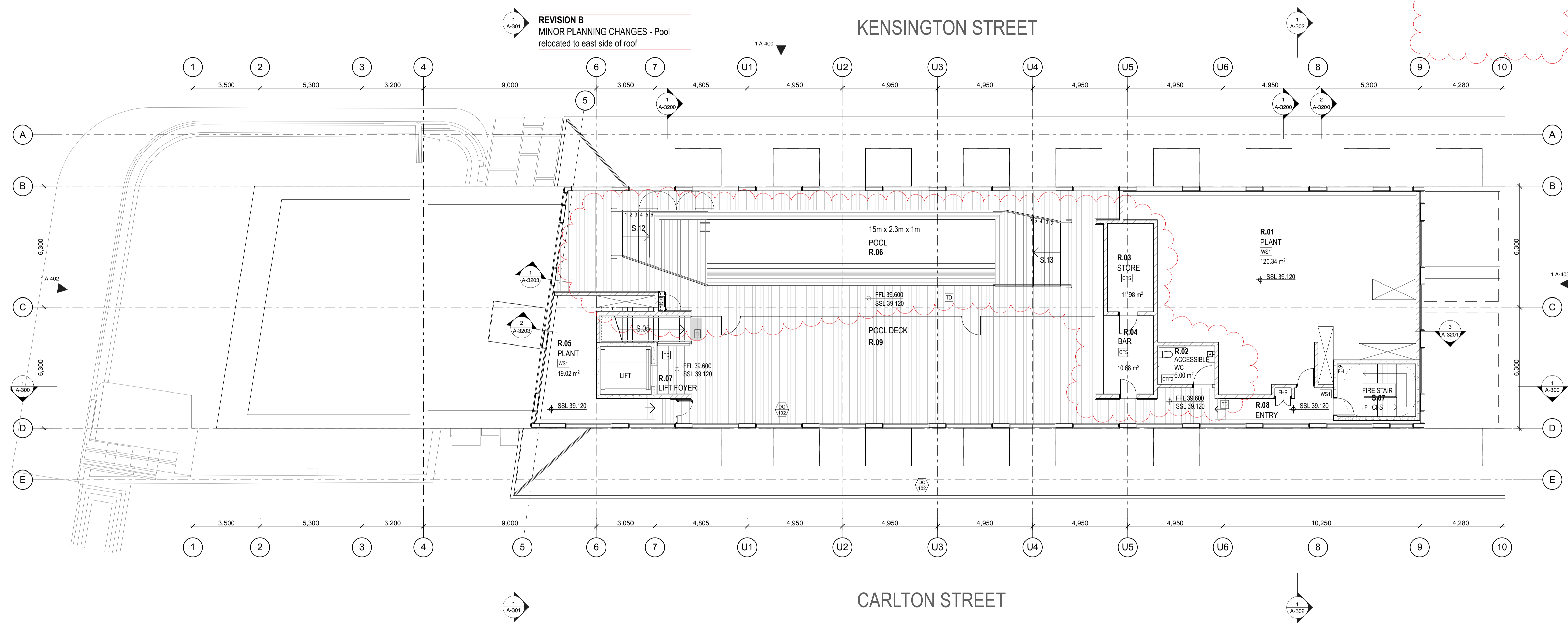


LEVEL 4
1:100

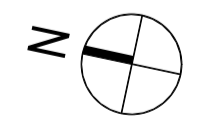


DATE 02/11/12	REV A	NOTES ISSUED FOR PLANNING APPROVAL	NOTES: Do not scale off drawings. Use figured dimensions only. Report any discrepancies to the architect. These designs, plans, specifications and the copyright therein are the property of Tonkin Zulaikha Greer Architects Pty Ltd, and must not be reproduced or copied wholly or in part without written permission of Tonkin Zulaikha Greer Architects Pty Ltd.	HERITAGE PAUL DAVIES PTY LTD T: 02 9618 5941 E: paul@heritage-architects.com.au	CIVIL ENGINEER MOTT MACDONALD T: 02 9439 2633 E: switshier@hugestrueman.com.au	ELECTRICAL ENGINEER WSP BUILDINGS T: 02 8907 0900 E: rob.beck@wspgroup.com.au	MECHANICAL ENGINEER WSP BUILDINGS T: 02 8907 0900 E: rob.beck@wspgroup.com.au	PCA CITY PLAN SERVICES T: 02 8270 3500 E: chrism@cityplan.com.au	CLIENT: SONRAC DEVELOPMENTS	PROJECT: BLOCK 3A, CENTRAL PARK: ADAPTIVE REUSE OF THE CLARE HOTEL AND ADMINISTRATION BUILDING PROJECT NO: 12016	ARCHITECT TONKIN ZULAIKHA GREER ARCHITECTS 117 Reservoir Street Surry Hills, NSW 2010 ABN: 4600272349 P: (02) 9215 4900 F: (02) 9215 4901 EMAIL: john@tazg.com.au	DRAWING TITLE LEVEL 4	DRAWN BY JH
28/06/13	B	SECTION 75W AMMENDMENTS		ESD WSP BUILT ECOLOGY T: 02 8907 0900 E: alan.davis@wspgroup.com.au	STRUCTURAL ENGINEER MOTT MACDONALD T: 02 9439 2633 E: switshier@hugestrueman.com.au	HYDRAULIC ENGINEER WSP BUILDINGS T: 02 8907 0900 E: rob.beck@wspgroup.com.au	FIRE ENGINEERING WSP BUILDINGS T: 02 8907 0900 E: rob.beck@wspgroup.com.au	TOWN PLANNER JBA PLANNING T: 02 9956 6962 E: sgruge@jbaPlanning.com.au				SCALES 1:100 @ A1	CHECKED JC
		PHASE FOR PLANNING APPROVAL	DRAWING NO A-105	DATE JULY 2013	REVISION B								

REFER A_000 FOR LEGEND CODES



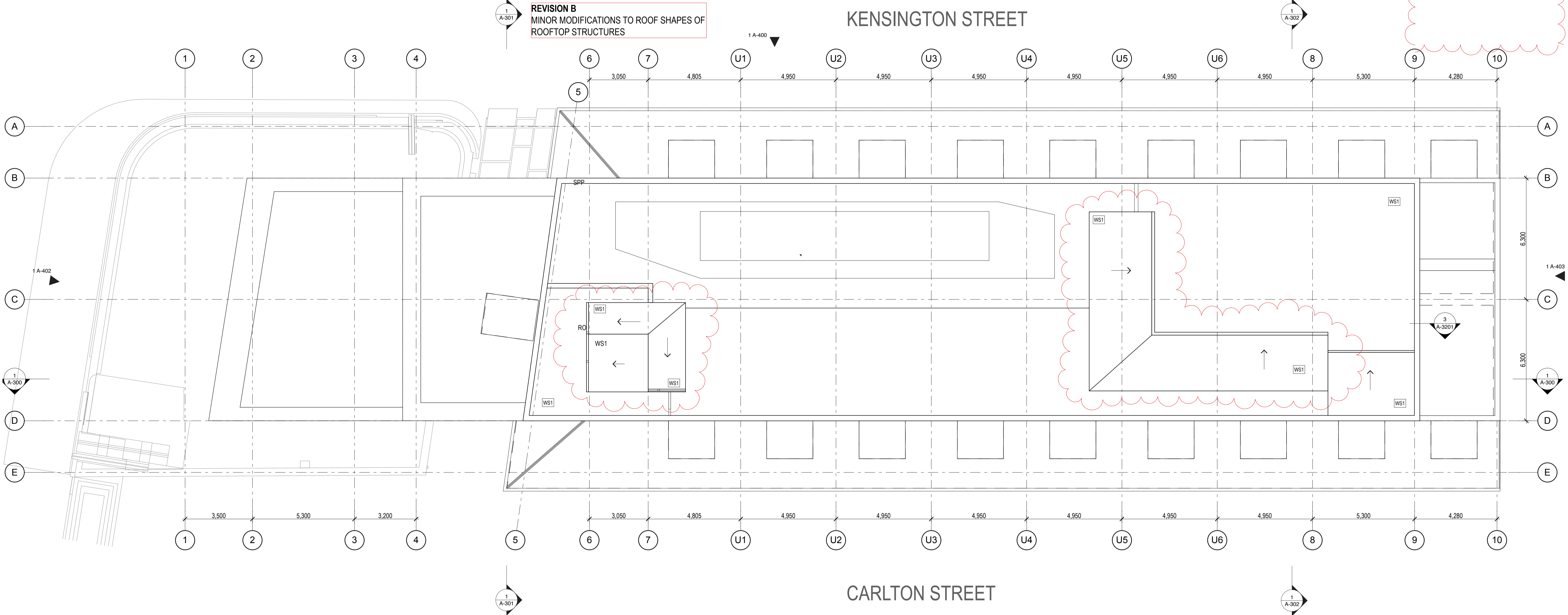
1 ROOF TOP POOL
1:100



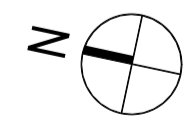
DATE 02/11/12	REV A	NOTES: ISSUED FOR PLANNING APPROVAL	NOTES: Do not scale off drawings. Use figured dimensions only. Report any discrepancies to the architect. These designs, plans, specifications and the copyright therein are the property of Tonkin Zulaikha Greer Architects Pty Ltd, and must not be reproduced or copied wholly or in part without written permission of Tonkin Zulaikha Greer Architects Pty Ltd.	HERITAGE PAUL DAVIES PTY LTD T: 02 9618 5941 E: paul@heritage-architects.com.au	CIVIL ENGINEER MOTT MACDONALD T: 02 9439 2633 E: swiltshier@hugestrueman.com.au	ELECTRICAL ENGINEER WSP BUILDINGS T: 02 8907 0900 E: rob.beck@wspgroup.com.au	MECHANICAL ENGINEER WSP BUILDINGS T: 02 8907 0900 E: rob.beck@wspgroup.com.au	PCA CITY PLAN SERVICES T: 02 8270 3500 E: chrism@cityplan.com.au	CLIENT: T: SONRAC DEVELOPMENTS	PROJECT: BLOCK 3A, CENTRAL PARK: ADAPTIVE REUSE OF THE CLARE HOTEL AND ADMINISTRATION BUILDING PROJECT NO: 12016	ARCHITECT TONKIN ZULAIKHA GREER ARCHITECTS 117 Reservoir Street Surry Hills, NSW 2010 ABN: 46002722349 P: (02) 9215 4900 F: (02) 9215 4901 EMAIL: john@tazg.com.au	DRAWING TITLE POOL DECK SCALES 1:100 @ A1 PHASE FOR PLANNING APPROVAL	DRAWING NO A-106	DRAWN BY JH CHECKED JC DATE JULY 2013 REVISION B
02/06/13	B	SECTION 75W AMMENDMENTS		ESD WSP BUILT ECOLOGY T: 02 8907 0900 E: alan.davis@wspgroup.com.au	STRUCTURAL ENGINEER MOTT MACDONALD T: 02 9439 2633 E: swiltshier@hugestrueman.com.au	HYDRAULIC ENGINEER WSP BUILDINGS T: 02 8907 0900 E: rob.beck@wspgroup.com.au	FIRE ENGINEERING WSP BUILDINGS T: 02 8907 0900 E: rob.beck@wspgroup.com.au	TOWN PLANNER JBA PLANNING T: 02 9956 6962 E: sgruge@japlaning.com.au	CLIENT: T: SONRAC DEVELOPMENTS	PROJECT: BLOCK 3A, CENTRAL PARK: ADAPTIVE REUSE OF THE CLARE HOTEL AND ADMINISTRATION BUILDING PROJECT NO: 12016	ARCHITECT TONKIN ZULAIKHA GREER ARCHITECTS 117 Reservoir Street Surry Hills, NSW 2010 ABN: 46002722349 P: (02) 9215 4900 F: (02) 9215 4901 EMAIL: john@tazg.com.au	DRAWING TITLE POOL DECK SCALES 1:100 @ A1 PHASE FOR PLANNING APPROVAL	DRAWING NO A-106	DRAWN BY JH CHECKED JC DATE JULY 2013 REVISION B

REFER A_000 FOR LEGEND CODES

REVISION B
MINOR MODIFICATIONS TO ROOF SHAPES OF ROOFTOP STRUCTURES

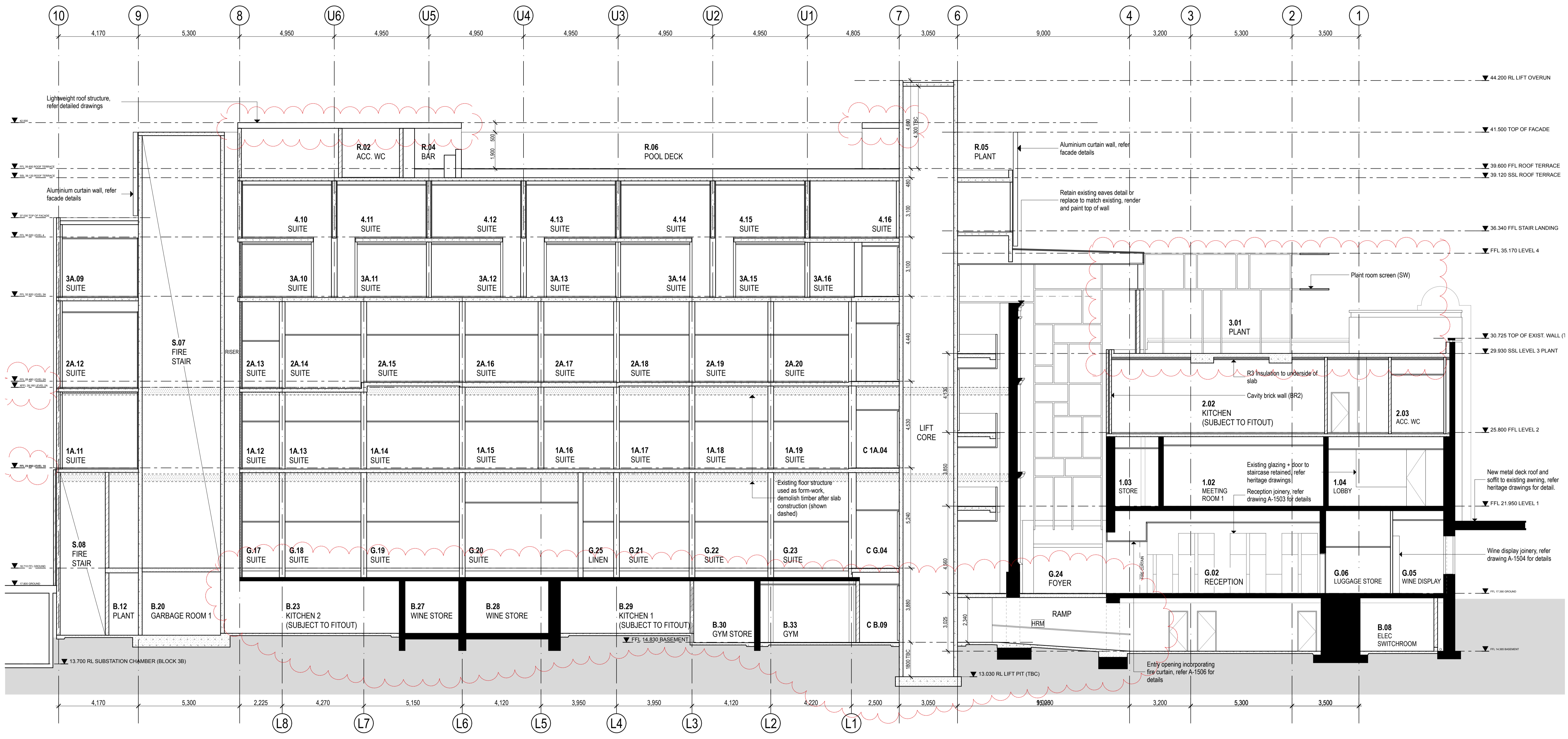


1 ROOF
1:100



DATE 02/11/12	REV A	NOTES: ISSUED FOR PLANNING APPROVAL	NOTES: Do not scale off drawings. Use figured dimensions only. Report any discrepancies to the architect. These designs, plans, specifications and the copyright therein are the property of Tonkin Zulaikha Greer Architects Pty Ltd, and must not be reproduced or copied wholly or in part without written permission of Tonkin Zulaikha Greer Architects Pty Ltd.	HERITAGE PAUL DAVIES PTY LTD T: 02 9618 5941 E: pauld@heritage-architects.com.au	CIVIL ENGINEER MOTT MACDONALD T: 02 9439 2633 E: swiltshier@hugestrueman.com.au	ELECTRICAL ENGINEER WSP BUILDINGS T: 02 8907 0900 E: rob.beck@wspgroup.com.au	MECHANICAL ENGINEER WSP BUILDINGS T: 02 8907 0900 E: rob.beck@wspgroup.com.au	PCA CITY PLAN SERVICES T: 02 8270 3500 E: chrism@cityplan.com.au	CLIENT: T: SONRAC DEVELOPMENTS	PROJECT: BLOCK 3A, CENTRAL PARK: ADAPTIVE REUSE OF THE CLARE HOTEL AND ADMINISTRATION BUILDING PROJECT NO: 12016	ARCHITECT TONKIN ZULAIKHA GREER ARCHITECTS 117 Reservoir Street Surry Hills, NSW 2010 ABN: 46002722349 P: (02) 9215 4900 F: (02) 9215 4901 EMAIL: john@tզg.com.au	DRAWING TITLE ROOF SCALES 1:100 @ A1 PHASE FOR PLANNING APPROVAL	DRAWING NO A-107	DRAWN BY JH CHECKED JC DATE JULY 2013 REVISION B
DATE 28/06/13	REV B	NOTES: SECTION 75W AMMENDMENTS		ESD WSP BUILT ECOLOGY T: 02 8907 0900 E: alan.davis@wspgroup.com.au	STRUCTURAL ENGINEER MOTT MACDONALD T: 02 9439 2633 E: swiltshier@hugestrueman.com.au	HYDRAULIC ENGINEER WSP BUILDINGS T: 02 8907 0900 E: rob.beck@wspgroup.com.au	FIRE ENGINEERING WSP BUILDINGS T: 02 8907 0900 E: rob.beck@wspgroup.com.au	TOWN PLANNER JBA PLANNING T: 02 9956 6962 E: sgruge@jbaPlanning.com.au	CLIENT: T: SONRAC DEVELOPMENTS	PROJECT: BLOCK 3A, CENTRAL PARK: ADAPTIVE REUSE OF THE CLARE HOTEL AND ADMINISTRATION BUILDING PROJECT NO: 12016	ARCHITECT TONKIN ZULAIKHA GREER ARCHITECTS 117 Reservoir Street Surry Hills, NSW 2010 ABN: 46002722349 P: (02) 9215 4900 F: (02) 9215 4901 EMAIL: john@tզg.com.au	DRAWING TITLE ROOF SCALES 1:100 @ A1 PHASE FOR PLANNING APPROVAL	DRAWING NO A-107	DRAWN BY JH CHECKED JC DATE JULY 2013 REVISION B

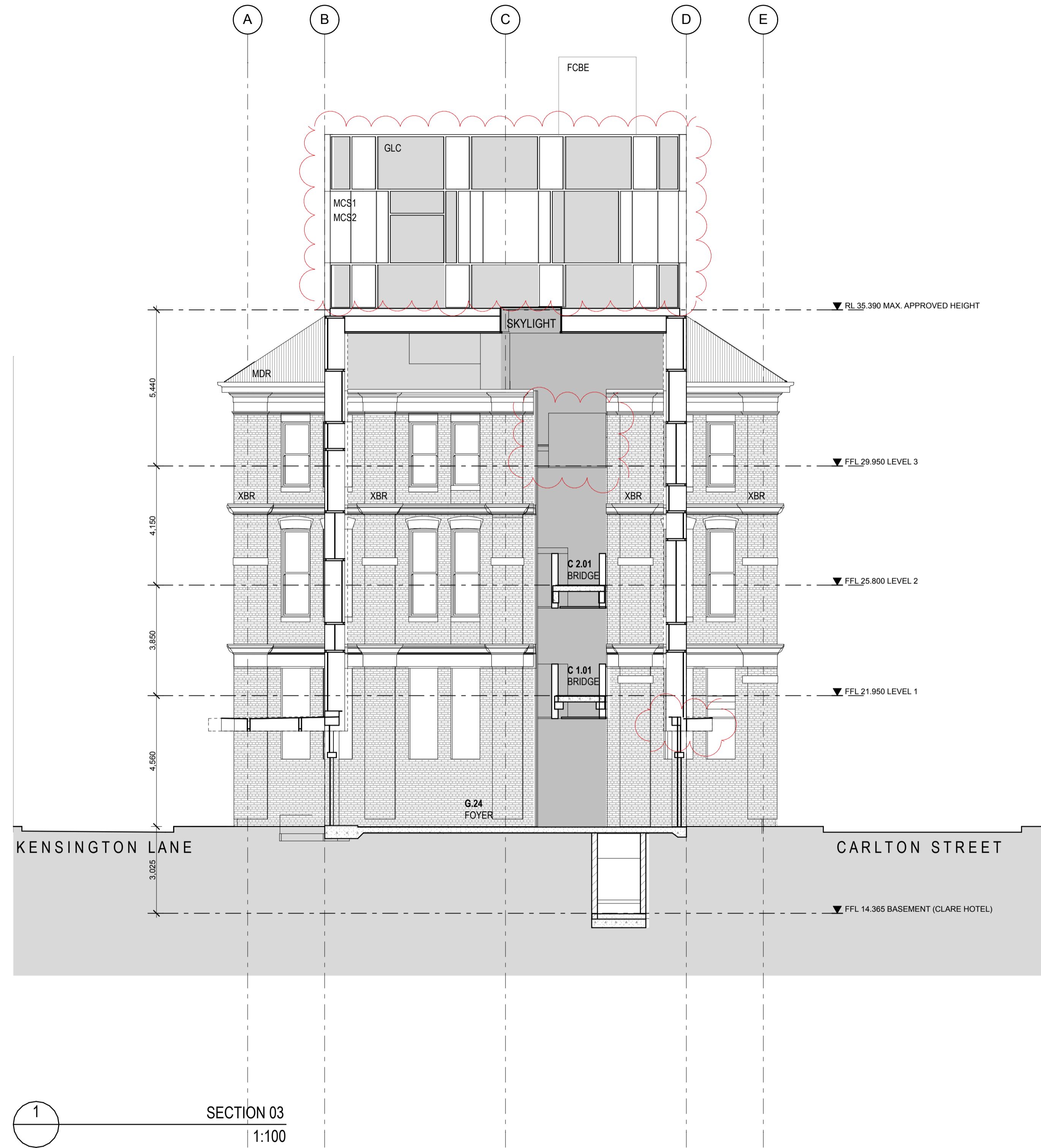
REVISION B
 POOL DECK ROOF CANOPIES RAISED BY 100mm
 SIGNATURE WINE AND DESERT BAR DELETED
 ROOF TERRACE DELETED
 FFL CHANGE
 BASMENT RE-PLANNING



1 SECTION 01
 1:100

DATE	REV	NOTES :	NOTES:	HERITAGE PAUL DAVIES PTY LTD T: 02 9618 5941 E: paul@heritage-architects.com.au	CIVIL ENGINEER MOTT MACDONALD T: 02 9439 2633 E: switshier@hugestrueman.com.au	ELECTRICAL ENGINEER WSP BUILDINGS T: 02 8907 0900 E: rob.beck@wspgroup.com.au	MECHANICAL ENGINEER WSP BUILDINGS T: 02 8270 3500 E: rob.beck@wspgroup.com.au	PCA CITY PLAN SERVICES T: 02 8270 3500 E: chrism@cityplan.com.au	CLIENT: T: SONRAC DEVELOPMENTS	PROJECT: BLOCK 3A, CENTRAL PARK: ADAPTIVE REUSE OF THE CLARE HOTEL AND ADMINISTRATION BUILDING PROJECT NO : 12016	ARCHITECT TONKIN ZULAIKHA GREER ARCHITECTS 117 Reservoir Street Surry Hills, NSW 2010 ABN: 4600272349 P: (02) 9215 4900 F: (02) 9215 4901 EMAIL: john@tզ.com.au	DRAWING TITLE SECTION 01 SCALES 1:100 @ A1 PHASE FOR PLANNING APPROVAL	DRAWING NO A-300	DRAWN BY JH CHECKED JC DATE JUNE 2013 REVISION B
------	-----	---------	--------	--	---	--	--	---	--	--	--	--	----------------------------	---

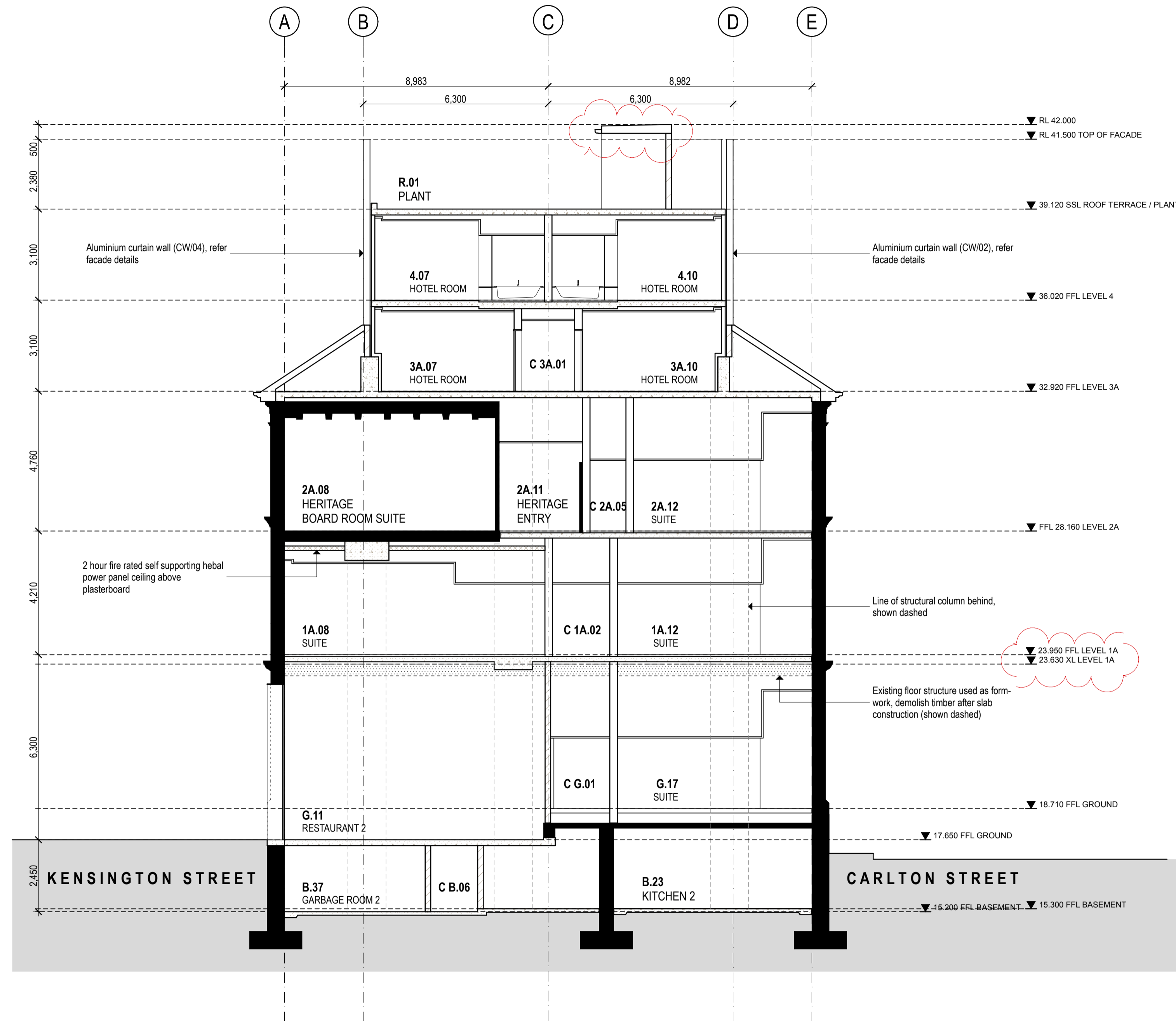
REVISION B
 WESTERN ENTRY CANOPY REDUCED
 LIFT OVERRUN MATERIAL CHANGE
 FBBV REMOVED
 LEVEL 3 BRIDGE DELETED
 FACADE INFILL PANEL MATERIAL CHANGE



1 SECTION 03
 1:100

DATE	REV	NOTES :	NOTES:	HERITAGE	CIVIL ENGINEER	ELECTRICAL ENGINEER	MECHANICAL ENGINEER	PCA	CLIENT:	PROJECT :	ARCHITECT	DRAWING TITLE	DRAWN BY
02/11/12	A	ISSUED FOR PLANNING APPROVAL	Do not scale off drawings. Use figured dimensions only. Report any discrepancies to the architect. These designs, plans, specifications and the copyright therein are the property of Tonkin Zulaikha Greer Architects Pty Ltd, and must not be reproduced or copied wholly or in part without written permission of Tonkin Zulaikha Greer Architects Pty Ltd.	PAUL DAVIES PTY LTD T: 02 9618 5941 E: pauld@heritage-architects.com.au	MOTT MACDONALD T: 02 9439 2633 E: swilshier@hugestrueman.com.au	WSP BUILDINGS T: 02 8907 0900 E: rob.beck@wspgroup.com.au	WSP BUILDINGS T: 02 8907 0900 E: rob.beck@wspgroup.com.au	CITY PLAN SERVICES T: 02 8270 3500 E: chrism@cityplan.com.au	T:	BLOCK 3A, CENTRAL PARK: ADAPTIVE REUSE OF THE CLARE HOTEL AND ADMINISTRATION BUILDING PROJECT NO : 12016	TONKIN ZULAIKHA GREER ARCHITECTS 117 Reservoir Street Surry Hills, NSW 2010 ABN: 4600272349 P: (02) 9215 4900 F: (02) 9215 4901 EMAIL: john@tզg.com.au	SECTION 02	JH
15/10/13	B	SECTION 75W AMMENDMENTS		ESD WSP BUILT ECOLOGY T: 02 8907 0900 E: alan.davis@wspgroup.com.au	STRUCTURAL ENGINEER MOTT MACDONALD T: 02 9439 2633 E: swilshier@hugestrueman.com.au	HYDRAULIC ENGINEER WSP BUILDINGS T: 02 8907 0900 E: rob.beck@wspgroup.com.au	FIRE ENGINEERING WSP BUILDINGS T: 02 8907 0900 E: rob.beck@wspgroup.com.au	TOWN PLANNER JBA PLANNING T: 02 9956 6962 E: sgouge@jbaPlanning.com.au	SONRAC DEVELOPMENTS		117 Reservoir Street Surry Hills, NSW 2010 ABN: 4600272349 P: (02) 9215 4900 F: (02) 9215 4901 EMAIL: john@tզg.com.au	SECTION 02 SCALES 1:100 @ A1 PHASE FOR PLANNING APPROVAL	JC
											ARCHITECTS	DRAWING NO	DATE
											tonkin zulaikha greer	A-301	JUNE 2013
													REVISION
													B

REVISION B
 POOL DECK ROOF CANOPY RAISED BY 100mm
 LEVEL 1 FFL CHANGE TO RETAIN EXISTING STRUCTURE



1 SECTION 06
 1:100

DATE	REV	NOTES:	NOTES:	HERITAGE	CIVIL ENGINEER	ELECTRICAL ENGINEER	MECHANICAL ENGINEER	PCA	CLIENT:	PROJECT:	ARCHITECT	DRAWING TITLE	DRAWN BY
02/11/12	A	ISSUED FOR PLANNING APPROVAL	Do not scale off drawings. Use figured dimensions only. Report any discrepancies to the architect. These designs, plans, specifications and the copyright therein are the property of Tonkin Zulaikha Greer Architects Pty Ltd, and must not be reproduced or copied wholly or in part without written permission of Tonkin Zulaikha Greer Architects Pty Ltd.	PAUL DAVIES PTY LTD T: 02 9618 5941 E: pauld@heritage-architects.com.au	MOTT MACDONALD T: 02 9439 2633 E: swiltshier@hugestrueman.com.au	WSP BUILDINGS T: 02 8907 0900 E: rob.beck@wspgroup.com.au	WSP BUILDINGS T: 02 8907 0900 E: rob.beck@wspgroup.com.au	CITY PLAN SERVICES T: 02 8270 3500 E: chrism@cityplan.com.au	SONRAC DEVELOPMENTS	BLOCK 3A, CENTRAL PARK: ADAPTIVE REUSE OF THE CLARE HOTEL AND ADMINISTRATION BUILDING	TONKIN ZULAIKHA GREER ARCHITECTS 117 Reservoir Street Surry Hills, NSW 2010 ABN: 4600272349 P: (02) 9215 4900 F: (02) 9215 4901 EMAIL: john@tzzg.com.au	SECTION 03	JH
15/10/13	B	SECTION 75W AMMENDMENTS		ESD WSP BUILT ECOLOGY T: 02 8907 0900 E: alan.davis@wspgroup.com.au	STRUCTURAL ENGINEER MOTT MACDONALD T: 02 9439 2633 E: swiltshier@hugestrueman.com.au	HYDRAULIC ENGINEER WSP BUILDINGS T: 02 8907 0900 E: rob.beck@wspgroup.com.au	FIRE ENGINEERING WSP BUILDINGS T: 02 8907 0900 E: rob.beck@wspgroup.com.au	TOWN PLANNER JBA PLANNING T: 02 9956 6962 E: sgouge@jbaipanning.com.au		PROJECT NO: 12016		FOR PLANNING APPROVAL	CHECKED
												1:100 @ A1	JC
												DRAWING NO	DATE
												A-302	JUNE 2013
												REVISION	REVISION
												B	B

