

APPENDIX H

Architectural Drawings



LEGEND AND NOTES TO ACCOMPANY AMENDED ARCHITECTURAL DRAWINGS (PREPARED BY RICE DAUBNEY)

PREVIOUS LEGEND

A	BRICKWORK COLOUR: RED
B	CFC CLADDING COLOUR: WHITE
C	CFC CLADDING COLOUR: DARK GREY
F	ALUMINIUM PERFORATED SUNSCREENS POWDER COATED COLOUR: TBC 40% TO 50% PERFORATIONS WITH Æ7 MM
G	ANODISED ALUMINIUM AIRFOIL LOUVRES COLOUR: SPANISH SILVER
H	METAL LOUVRES POWDER COATED COLOUR: GUN METAL GREY
I	FRITTED GLAZING TO BALCONIES
K	SHOPFRONT GLAZING WITH SHADOW BOX HEAD PANEL POWDER COATED ALUMINIUM FRAME
L	GLAZED DOORS WITH CFC HEAD PANEL POWDER COATED ALUMINIUM FRAME
M	SHOPFRONT GLAZING WITH CFC HEAD PANEL ALLOW 20% OF PANELS TO BE IN TRANSLUCENT GLASS POWDER COATED ALUMINIUM FRAME
R	SOLID FENCING COLOUR : WHITE
S	MESH FENCING COLOUR : TBC
T	METAL ROOFING IN KLIP-LOCK 700 COLOUR : WINDSPRAY
U	GLAZED HIGH LEVEL WINDOWS POWDER COATED ALUMINIUM FRAME
V	GLASS BALUSTRADE WITH S/S HANDRAIL AND STAUNCHION
Y	SINGLE PLY MEMBRANE ROOF COLOUR : TBC
Z	SILL PANEL COLOUR : TO MATCH HEAD PANEL

TEXT DESCRIPTION OF VE CHANGES

I	FRITTED GLAZING TO BALCONIES OMITTED REPLACED BY SH1
U	GLAZED HIGH LEVEL WINDOWS TO NORTH ELEVATION AMENDED TO CFC CLADDING PANELS REMAINING GLAZED HIGH LEVEL WINDOWS OMITTED, ROOF PROFILE UPDATED. SUN TUBES ADDED TO ROOF PLAN
Y	SINGLE PLY MEMBRANE ROOF AMENDED TO MRF 1 PLANT ROOM ROOF PROFILE AMENDED EXTENT OF LOUVRES TO PLANT ROOM REDUCED TO MEET ENGINEERING REQUIREMENT EAST ELEVATION STAIR [AR.MH.1514] AMENDED TO ENCLOSED STAIR TO ROOF AND LEVEL 2 PLANT ROOM INTRODUCTION OF COLUMNS TO MAIN ENTRY RAMP

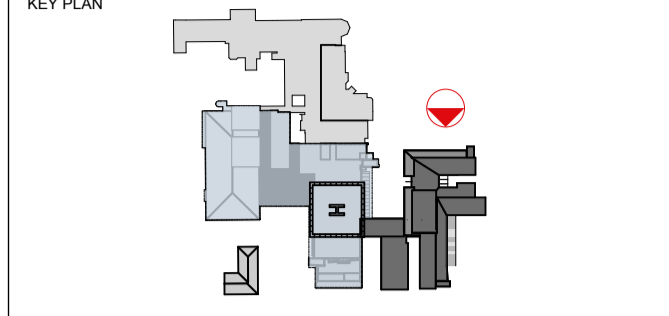
UPDATED LEGEND

BWK1	BRICKWORK COLOUR: RED
FC1	CFC CLADDING COLOUR: WHITE
FC2	CFC CLADDING COLOUR: DARK GREY
SH1	ALUMINIUM PERFORATED SUNSCREENS POWDER COATED COLOUR: TBC 40% TO 50% PERFORATIONS WITH Æ7 MM
SH3	ANODISED ALUMINIUM AIRFOIL LOUVRES [VERTICAL] COLOUR: SPANISH SILVER
SH3A	ANODISED ALUMINIUM AIRFOIL LOUVRES [HORIZONTAL] COLOUR: SPANISH SILVER
SH3B	ANODISED ALUMINIUM AIRFOIL LOUVRES [HORIZONTAL] COLOUR: SPANISH SILVER
LVR1	METAL LOUVRES POWDER COATED COLOUR: DARK GREY
	OMITTED. REPLACED BY SH1
GLZ3	SHOPFRONT GLAZING WITH GLAZED SHADOWBOX SPANDREL HEAD PANEL POWDER COATED ALUMINIUM FRAME
GLZ6	GLAZED DOORS WITH GLAZED SHADOWBOX HEAD PANEL POWDER COATED ALUMINIUM FRAME
GLZ3A	SHOPFRONT GLAZING WITH GLAZED SHADOWBOX SPANDREL HEAD AND SILL PANEL POWDER COATED ALUMINIUM FRAME
CMR1	RENDER ON BLOCKWORK SUBSTRATE
SH1	ALUMINIUM PERFORATED SUNSCREENS POWDER COATED COLOUR: TBA 40% TO 50% PERFORATIONS WITH Æ7 MM
MRF1	METAL ROOFING IN KLIP-LOCK 700 COLOUR : WINDSPRAY
IPAN	CFC CLADDING COLOUR: DARK GREY
	OMITTED
	OMITTED. REPLACED WITH MRF 1
SPAN	CFC CLADDING SILL PANEL COLOUR: TBA

ADDITIONAL LEGEND REFERENCES

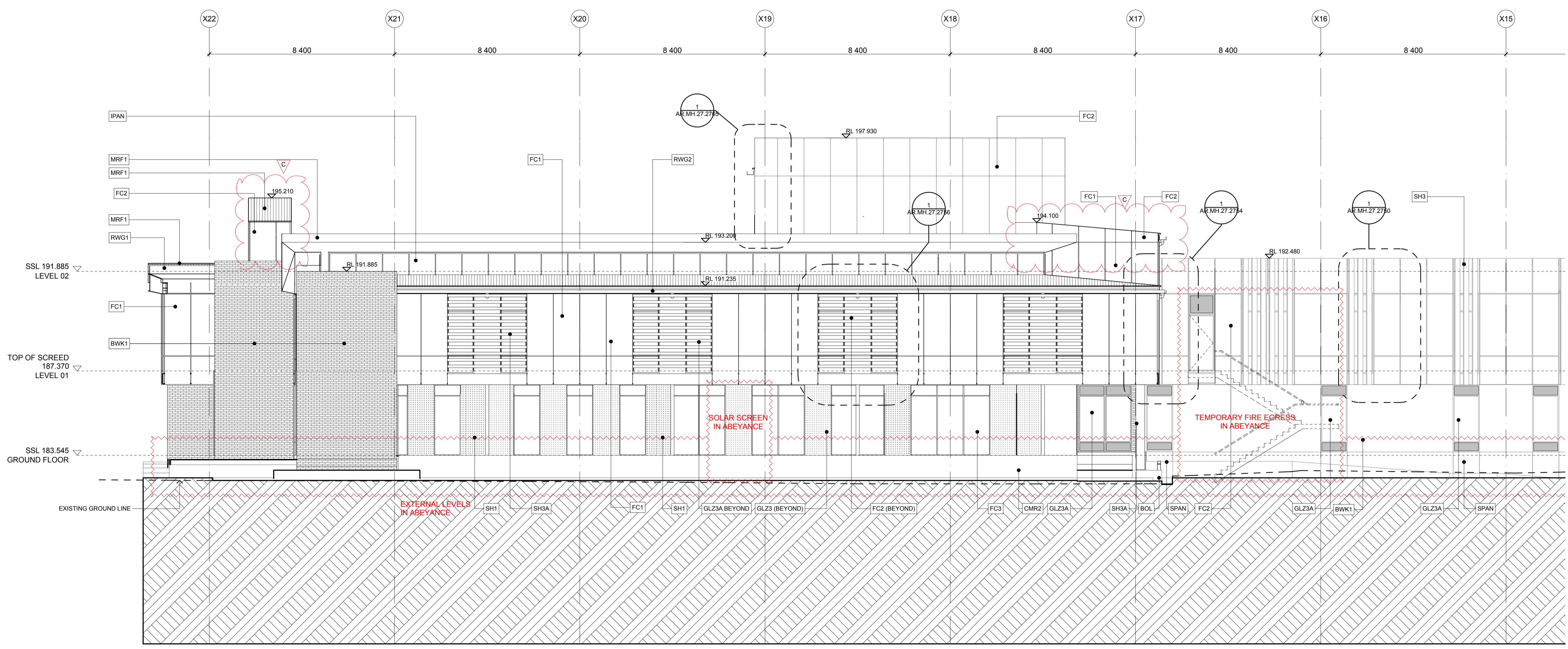
BAL 1	BALUSTRADE TO ROOF
BOL	BOLLARD
CMR2	RENDER ON CONCRETE SUBSTRATE
GLZ1	FULL HEIGHT GLAZING SYSTEM
GLZ2	GLASS CANOPY
GLZ4	HIGH LEVEL GLAZED WINDOWS
FC3	CFC CLADDING COLOUR: SANDSTONE TONES TBA
GLZ5	SHOPFRONT GLAZING WITH GLAZED SHADOWBOX SPANDREL POWDER COATED ALUMINIUM FRAME
RWG1	RAINWATER GUTTER [CONCEALED] PRESSED METAL
RWG2	RAINWATER GUTTER [EXPOSED] STAINLESS STEEL

THIS DOCUMENT IS THE COPYRIGHT OF RICE DAUBNEY NSW Pty Ltd.
 ALL INFORMATION ILLUSTRATED ON THIS DOCUMENT IS TO BE CHECKED AND VERIFIED ON SITE.
 IN THE EVENT OF DISCREPANCIES REFER TO ARCHITECT PRIOR TO COMMENCEMENT OF THE WORK.
 DO NOT SCALE DRAWINGS MANUALLY OR ELECTRONICALLY.



REV	DESCRIPTION OF CHANGE	DRAWN	CHECK	DATE
A	ISSUED FOR INFORMATION	KS	MS	04.11.11
B	ROOF PROFILE TO SUIT VE ITEM 11, PROFILE 3	KS	MS	11.11.11
C	ISSUE FOR CO-ORDINATION	KS	JS	03.02.12

NOTE: ALL SITE LEVELS SUBJECT TO DETAIL SURVEY



QUANTITY SURVEYOR
Davis Langdon
 An AECOM Company
 L21 420 GEORGE STREET SYDNEY NSW 2000
 P: 02 9956 8822
 W: www.davislangdon.com/ANZ

CONSULTANT
SINCLAIR KNIGHT MERZ
 100 CHRISTIE STREET ST LEONARDS NSW 2065
 P: 02 9928 2100
 W: www.skmconsulting.com

EO CONTRACTOR
hansen yuncken
 LEVEL 6, 15 BOURKE RD MASCOT NSW 2060
 P: 02 9770 7600
 F: 02 9770 7601
 W: www.hansenyuncken.com.au

CLIENT
NSW Health Infrastructure
 77 PACIFIC HIGHWAY NORTH SYDNEY NSW 2060
 P: 02 9978 5402
 F: 02 9304 1377
 W: www.hinfra.health.nsw.gov.au

ARCHITECTS
RICE DAUBNEY
 ANALYSING CREATING AND IMPLEMENTING ARCHITECTURE
 110 WALKER STREET (NORTH) SYDNEY 2060
 T: 02 9556 2066 F: 02 9559 3215
 rda@ricedaubney.com.au | www.ricedaubney.com.au
 Rice Daubney Group (Pty) Ltd. ABN: 71 001 050 703
 Rice Daubney Trading Trust ABN: 58 880 354 980

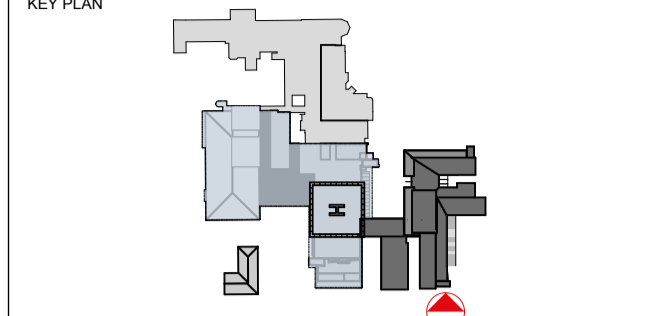
PROJECT:
WAGGA WAGGA BASE REDEVELOPMENT PHASE 1
 EDWARD STREET
 WAGGA WAGGA, NSW, 2650

DRAWING TITLE:
GA ELEVATIONS NORTH

SCALE: AS SHOWN
 PROJECT NUMBER: 10509_1
 DRAWING NUMBER: AR.MH.15.1511
 ISSUE: C

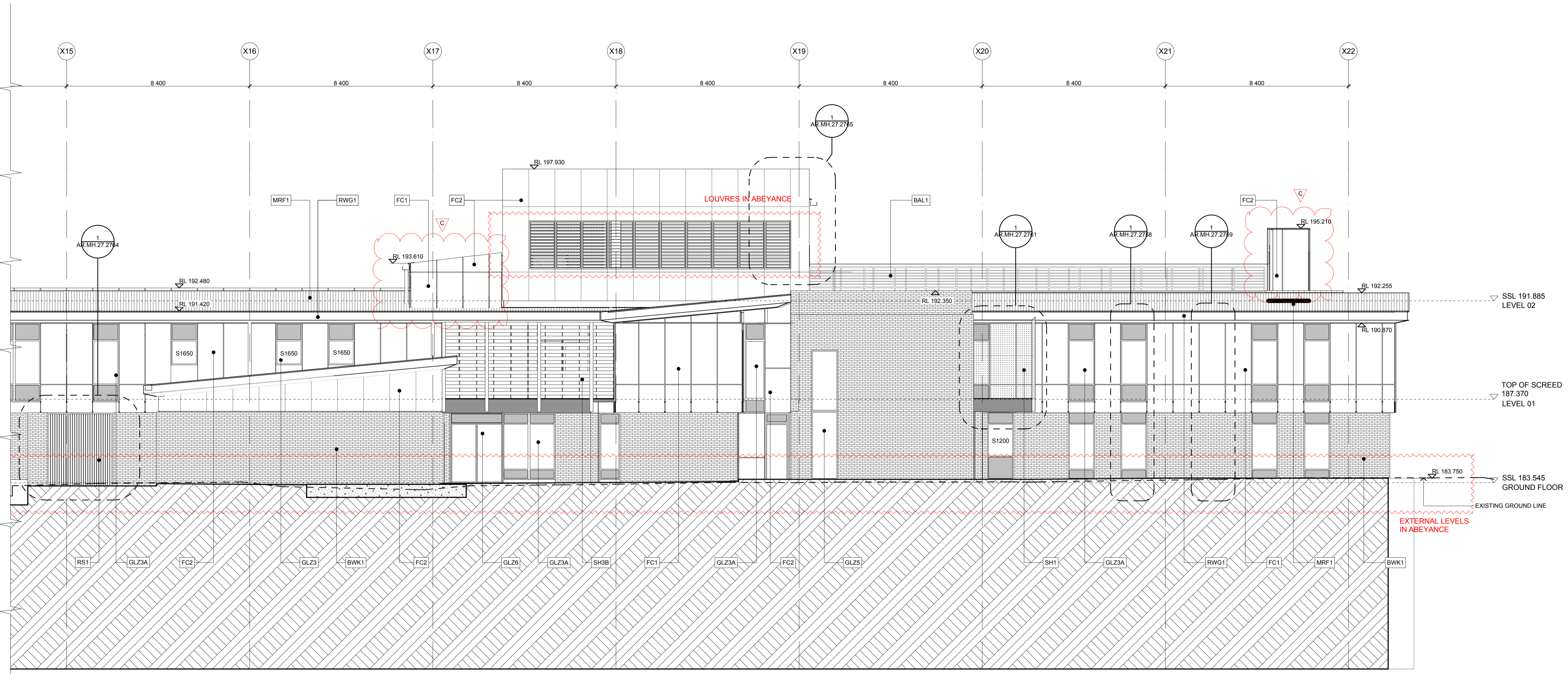
1 ELEVATION NORTH
 1:100 @A1

THIS DOCUMENT IS THE COPYRIGHT OF RICE DAUBNEY NSW Pty Ltd.
 ALL INFORMATION ILLUSTRATED ON THIS DOCUMENT IS TO BE CHECKED AND VERIFIED ON SITE.
 IN THE EVENT OF DISCREPANCIES REFER TO ARCHITECT PRIOR TO COMMENCEMENT OF THE WORK.
 DO NOT SCALE DRAWINGS MANUALLY OR ELECTRONICALLY.



REV	DESCRIPTION OF CHANGE	DRAWN	CHECK	DATE
A	ISSUED FOR INFORMATION	KS	MS	04.11.11
B	ROOF PROFILE TO SUITE ITEM 11, PROFILE 3	KS	MS	11.11.11
C	ISSUE FOR CO-ORDINATION	KS	JS	03.02.12

NOTE: ALL SITE LEVELS SUBJECT TO DETAIL SURVEY



QUANTITY SURVEYOR
Davis Langdon
 An AECOM Company

L21 420 GEORGE STREET SYDNEY NSW 2000
 P: 02 9956 8822
 W: www.davislangdon.com/ANZ

CONSULTANT
SINCLAIR KNIGHT MERZ

100 CHRISTIE STREET ST LEONARDS NSW 2065
 P: 02 9928 2100
 W: www.skmconsulting.com

E/C CONTRACTOR
hansen yuncken

LEVEL 6, 15 BOURKE RD MASCOT NSW 2060
 P: 02 9770 7600
 F: 02 9770 7601
 W: www.hansenyuncken.com.au

CLIENT
NSW Health Infrastructure

77 PACIFIC HIGHWAY NORTH SYDNEY NSW 2060
 P: 02 9978 5402
 F: 02 9304 1377
 W: www.hinfra.health.nsw.gov.au

ARCHITECTS
RICE DAUBNEY
 ANALYSING CREATING AND IMPLEMENTING ARCHITECTURE
 110 WALKER STREET (NORTH) SYDNEY 2060
 T: 02 9556 2066 F: 02 9559 9215
 r@ricedaubney.com.au | www.ricedaubney.com.au
 Rice Daubney Group (Pty) Ltd. ABN: 71 001 050 703
 Rice Daubney Trading Trust ABN: 51 680 354 983

PROJECT:
WAGGA WAGGA BASE REDEVELOPMENT PHASE 1
 EDWARD STREET
 WAGGA WAGGA, NSW, 2650

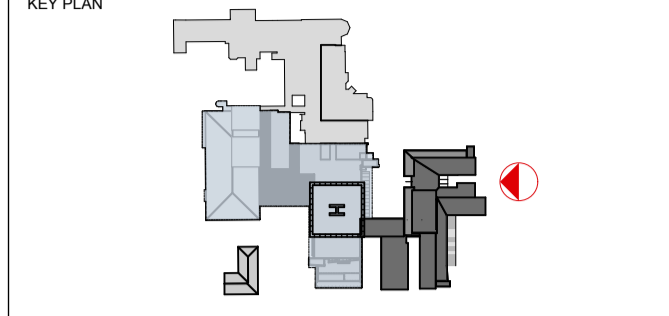
DRAWING TITLE:
GA ELEVATIONS SOUTH

SCALE: AS SHOWN
 CHECKED: JS

PROJECT NUMBER: 10509_1
 DRAWING NUMBER: AR.MH.15.1512
 ISSUE: C

1 ELEVATION SOUTH
 1:100

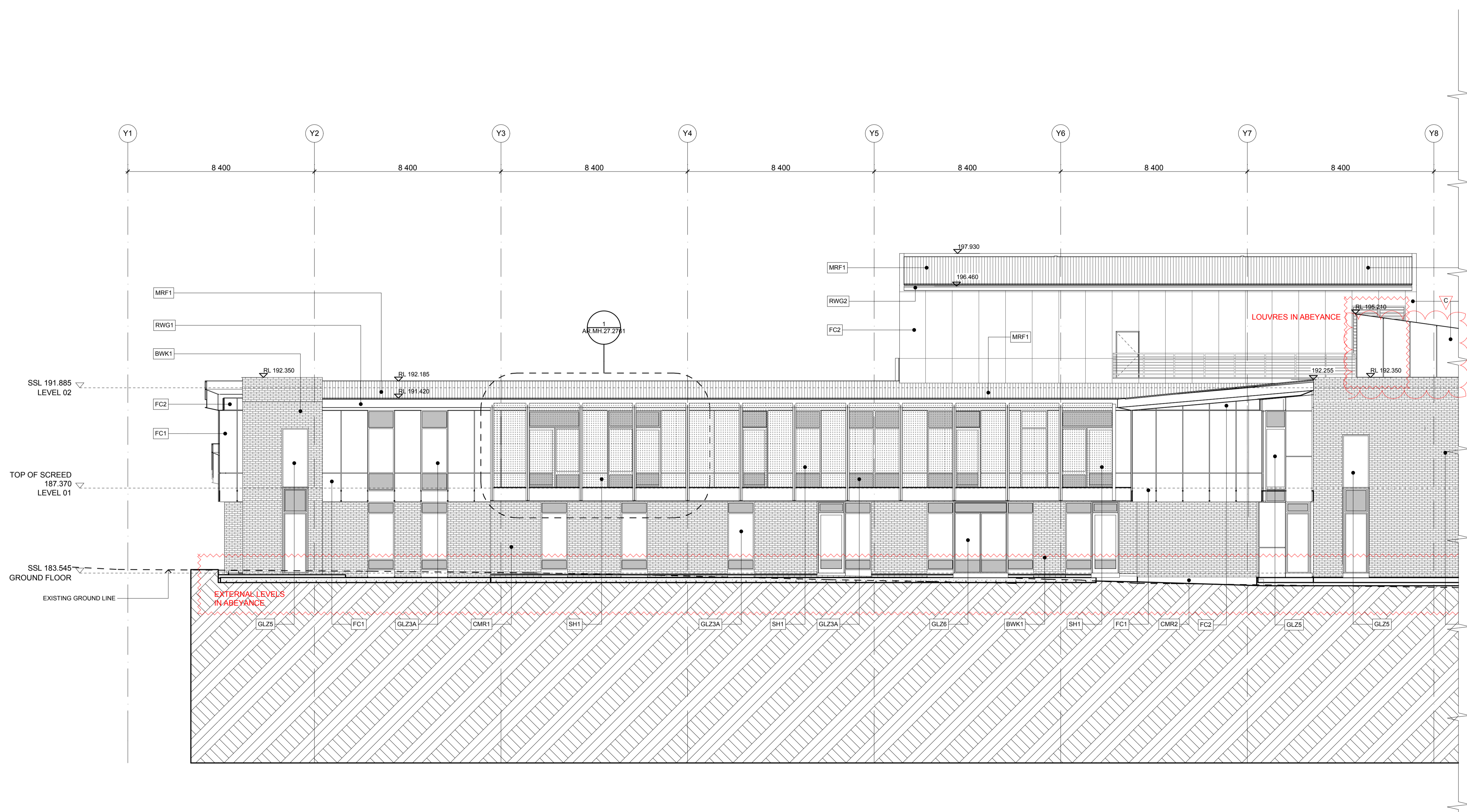
THIS DOCUMENT IS THE COPYRIGHT OF RICE DAUBNEY ARCHITECTURE
 ALL INFORMATION ILLUSTRATED ON THIS DOCUMENT IS TO BE CHECKED AND VERIFIED ON SITE
 IN THE EVENT OF DISCREPANCIES REFER TO ARCHITECT PRIOR TO COMMENCEMENT OF THE WORK
 DO NOT SCALE DRAWINGS MANUALLY OR ELECTRONICALLY



REV	DESCRIPTION OF CHANGE	DRAWN	CHECK	DATE
A	ISSUED FOR INFORMATION	KS	MS	04.11.11
B	ROOF PROFILE TO SUITE ITEM 11, PROFILE 3	KS	MS	11.11.11
C	ISSUE FOR CO-ORDINATION	KS	JS	03.02.12

NOTE: ALL SITE LEVELS SUBJECT TO DETAIL SURVEY

FOR CONTINUATION REFER TO AR.MH.15.1514



1 ELEVATION
 MHU - EAST
 1:100

QUANTITY SURVEYOR
Davis Langdon
 An AECOM Company
 L21 420 GEORGE STREET SYDNEY NSW 2000
 P: 02 9956 8822
 W: www.davislangdon.com/ANZ

CONSULTANT
SINCLAIR KNIGHT MERZ
 100 CHRISTIE STREET ST LEONARDS NSW 2065
 P: 02 9928 2100
 W: www.skmconsulting.com

E/C CONTRACTOR

 LEVEL 6, 15 BOURKE RD MASCOT NSW 2060
 P: 02 9770 7600
 F: 02 9770 7601
 W: www.hansenyuncken.com.au

CLIENT

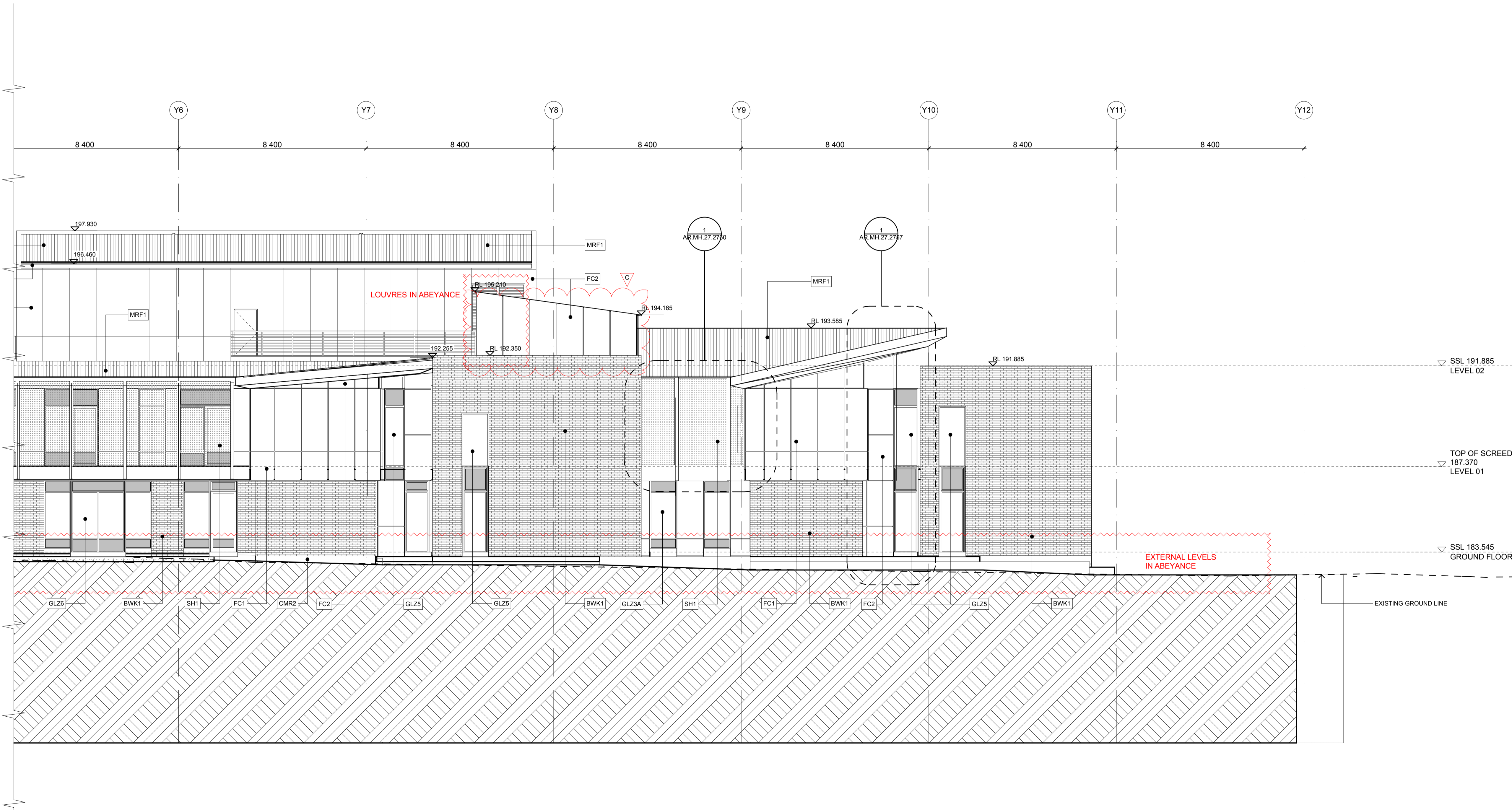
 77 PACIFIC HIGHWAY NORTH SYDNEY NSW 2060
 P: 02 9978 5402
 F: 02 9304 1377
 W: www.hinfra.health.nsw.gov.au

ARCHITECTS
RICE DAUBNEY
 ANALYSING CREATING AND IMPLEMENTING ARCHITECTURE
 110 WALKER STREET (NORTH) SYDNEY 2060
 T: 02 9556 2066 F: 02 9559 3215
 rda@ricedaubney.com.au www.ricedaubney.com.au
 Rice Daubney Group (Pty) Ltd. ABN: 71 001 850 700
 Rice Daubney Trading Trust ABN: 58 880 354 980

PROJECT:
 WAGGA WAGGA BASE REDEVELOPMENT
 PHASE 1
 EDWARD STREET
 WAGGA WAGGA, NSW, 2650

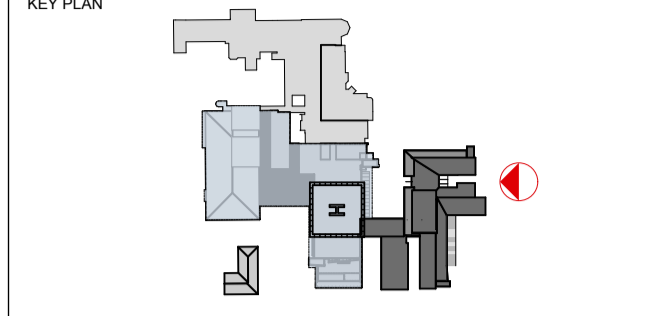
DRAWING TITLE:
**GA ELEVATIONS
 EAST - SHEET 01**
 SCALE: AS SHOWN CHECKED: JS
 PROJECT NUMBER: 10509_1 DRAWING NUMBER: AR.MH.15.1513 C ISSUE:

FOR CONTINUATION REFER TO AR.MH.15.1513



1 ELEVATION
MHU - EAST
1:100

THIS DOCUMENT IS THE COPYRIGHT OF RICE DAUBNEY AND/OR ITS ASSOCIATES.
ALL INFORMATION ILLUSTRATED ON THIS DOCUMENT IS TO BE CHECKED AND VERIFIED ON SITE.
IN THE EVENT OF DISCREPANCIES REFER TO ARCHITECT PRIOR TO COMMENCEMENT OF THE WORK.
DO NOT SCALE DRAWINGS MANUALLY OR ELECTRONICALLY.



REV	DESCRIPTION OF CHANGE	DRAWN	CHECK	DATE
A	ISSUED FOR INFORMATION	KS	MS	04.11.11
B	ROOF PROFILE TO SUIT VE ITEM 11, PROFILE 3	KS	MS	11.11.11
C	ISSUE FOR CO-ORDINATION	KS	JS	03.02.12

NOTE: ALL SITE LEVELS SUBJECT TO DETAIL SURVEY

QUANTITY SURVEYOR
Davis Langdon
An AECOM Company
L21 420 GEORGE STREET SYDNEY NSW 2000
P: 02 9956 8822
W: www.davislangdon.com/ANZ/

CONSULTANT
SINCLAIR KNIGHT MERZ
100 CHRISTIE STREET ST LEONARDS NSW 2065
P: 02 9928 2100
W: www.skmconsulting.com

ECI CONTRACTOR
hansen yuncken
LEVEL 6, 15 BOURKE RD MASCOT NSW 2060
P: 02 9770 7600
F: 02 9770 7601
W: www.hansenyuncken.com.au

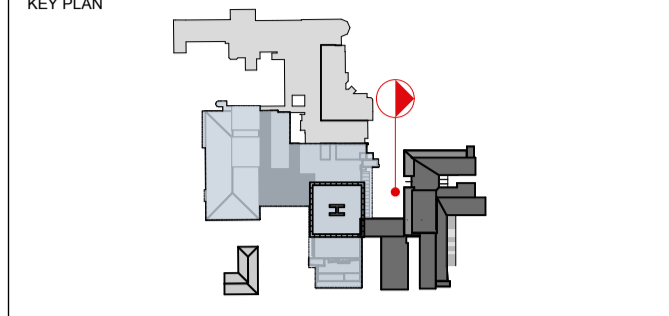
CLIENT
NSW Health
GOVERNMENT Infrastructure
77 PACIFIC HIGHWAY NORTH SYDNEY NSW 2060
P: 02 9978 5402
F: 02 9304 1377
W: www.hinfra.health.nsw.gov.au

ARCHITECTS
RICE DAUBNEY
ANALYSING CREATING AND IMPLEMENTING ARCHITECTURE
110 WALKER STREET (NORTH) SYDNEY 2060
T: 02 9556 2066 F: 02 9559 3215
rda@ricedaubney.com.au www.ricedaubney.com.au
Rice Daubney Group (Pty) Ltd ABN 71 001 250 700
Rice Daubney Trading Trust ABN 58 880 354 980

PROJECT:
WAGGA WAGGA BASE REDEVELOPMENT
PHASE 1
EDWARD STREET
WAGGA WAGGA, NSW, 2650

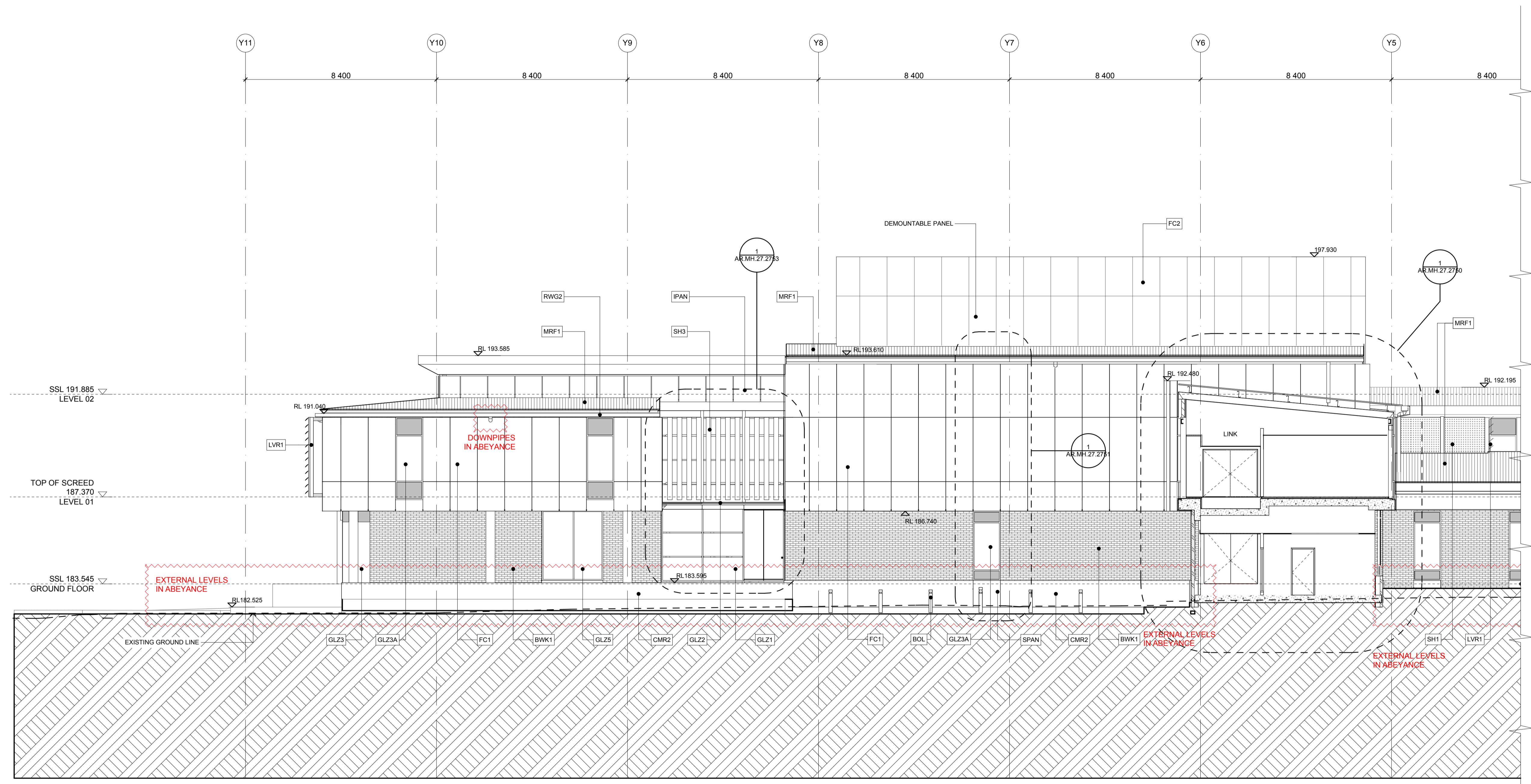
DRAWING TITLE:
**GA ELEVATIONS
EAST - SHEET 02**
SCALE: AS SHOWN CHECKED: JS
PROJECT NUMBER: 10509_1 DRAWING NUMBER: AR.MH.15.1514 C ISSUE:

THIS DOCUMENT IS THE COPYRIGHT OF RICE DAUBNEY AND/OR ITS ASSOCIATES.
 ALL INFORMATION ILLUSTRATED ON THIS DOCUMENT IS TO BE CHECKED AND VERIFIED ON SITE.
 IN THE EVENT OF DISCREPANCIES REFER TO ARCHITECT PRIOR TO COMMENCEMENT OF THE WORK.
 DO NOT SCALE DRAWINGS MANUALLY OR ELECTRONICALLY.



REV	DESCRIPTION OF CHANGE	DRAWN	CHECK	DATE
A	ISSUED FOR INFORMATION	KS	MS	04.11.11
B	ROOF PROFILE TO SUITE ITEM 11, PROFILE 3	KS	MS	11.11.11
C	ISSUE FOR CO-ORDINATION	KS	JS	03.02.12

NOTE: ALL SITE LEVELS SUBJECT TO DETAIL SURVEY



1 ELEVATION
 MHU - WEST
 1:100

FOR CONTINUATION REFER TO AR.MH.15.1516

QUANTITY SURVEYOR
Davis Langdon
 An AECOM Company
 L21 420 GEORGE STREET SYDNEY NSW 2000
 P: 02 9956 8822
 W: www.davislangdon.com/ANZ

CONSULTANT
SINCLAIR KNIGHT MERZ
 100 CHRISTIE STREET ST LEONARDS NSW 2065
 P: 02 9928 2100
 W: www.skmconsulting.com

E/C CONTRACTOR

 LEVEL 6, 15 BOURKE RD MASCOT NSW 2060
 P: 02 9770 7600
 F: 02 9770 7601
 W: www.hansenyuncken.com.au

CLIENT

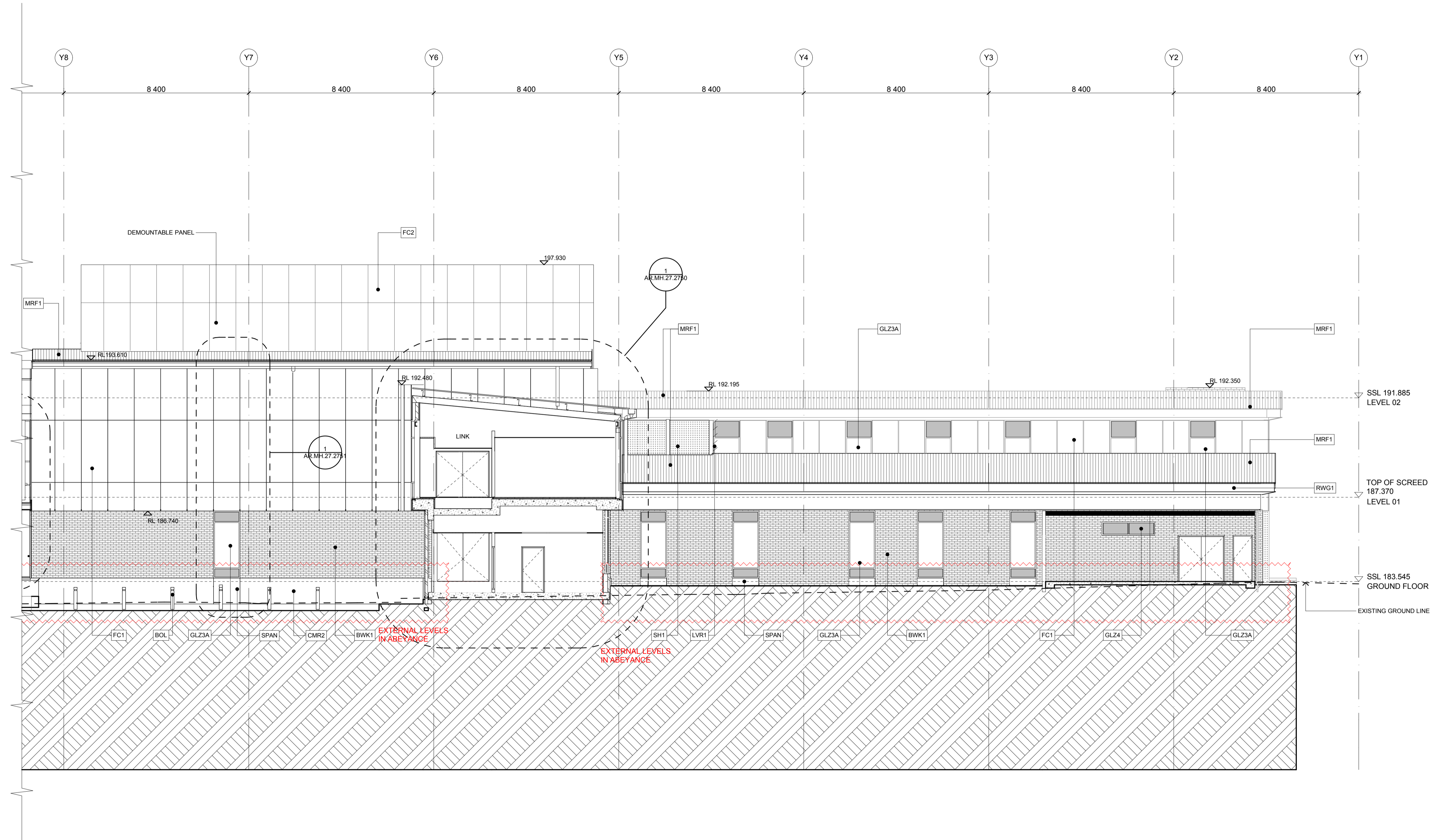
 77 PACIFIC HIGHWAY NORTH SYDNEY NSW 2060
 P: 02 9978 5402
 F: 02 9304 1377
 W: www.hinfra.health.nsw.gov.au

ARCHITECTS
RICE DAUBNEY
 ANALYSING CREATING AND IMPLEMENTING ARCHITECTURE
 110 WALKER STREET (NORTH) SYDNEY 2060
 T: 02 9556 2066 F: 02 9559 3215
 rda@ricedaubney.com.au www.ricedaubney.com.au
 Rice Daubney Group (Pty) Ltd. ABN: 71 001 050 703
 Rice Daubney Trading Trust ABN: 58 880 354 980

PROJECT:
 WAGGA WAGGA BASE REDEVELOPMENT
 PHASE 1
 EDWARD STREET
 WAGGA WAGGA, NSW, 2650

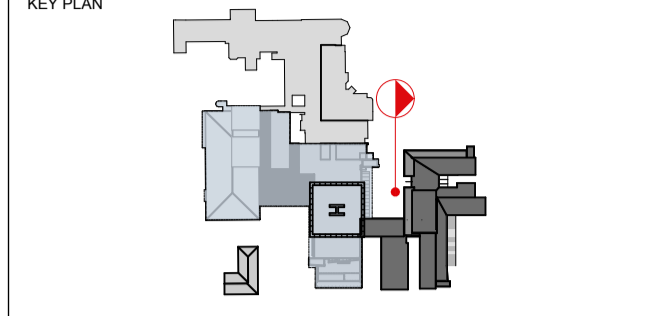
DRAWING TITLE:
 GA ELEVATIONS
 WEST - SHEET 01
 SCALE: AS SHOWN CHECKED: JS
 PROJECT NUMBER: 10509_1 DRAWING NUMBER: AR.MH.15.1515 C ISSUE:

FOR CONTINUATION REFER TO AR.MH.15.1515



1 ELEVATION
MHU - WEST
1:100

THIS DOCUMENT IS THE COPYRIGHT OF RICE DAUBNEY (NSW) PTY LTD.
ALL INFORMATION ILLUSTRATED ON THIS DOCUMENT IS TO BE CHECKED AND VERIFIED ON SITE.
IN THE EVENT OF DISCREPANCIES REFER TO ARCHITECT PRIOR TO COMMENCEMENT OF THE WORK.
DO NOT SCALE DRAWINGS MANUALLY OR ELECTRONICALLY.



REV	DESCRIPTION OF CHANGE	DRAWN	CHECK	DATE
A	ISSUED FOR INFORMATION	KS	MS	04.11.11
B	ROOF PROFILE TO SUIT VE ITEM 11, PROFILE 3	KS	MS	11.11.11
C	ISSUE FOR CO-ORDINATION	KS	JS	03.02.12

NOTE: ALL SITE LEVELS SUBJECT TO DETAIL SURVEY

QUANTITY SURVEYOR
Davis Langdon
 An AECOM Company
 L21 420 GEORGE STREET SYDNEY NSW 2000
 P: 02 9956 8822
 W: www.davislangdon.com/ANZ

CONSULTANT
SINCLAIR KNIGHT MERZ
 100 CHRISTIE STREET ST LEONARDS NSW 2065
 P: 02 9928 2100
 W: www.skmconsulting.com

EO CONTRACTOR
hansen yuncken
 LEVEL 6, 15 BOURKE RD MASCOT NSW 2060
 P: 02 9770 7600
 F: 02 9770 7601
 W: www.hansenyuncken.com.au

CLIENT
NSW GOVERNMENT Health Infrastructure
 77 PACIFIC HIGHWAY NORTH SYDNEY NSW 2060
 P: 02 9978 5402
 F: 02 9304 1377
 W: www.hinfra.health.nsw.gov.au

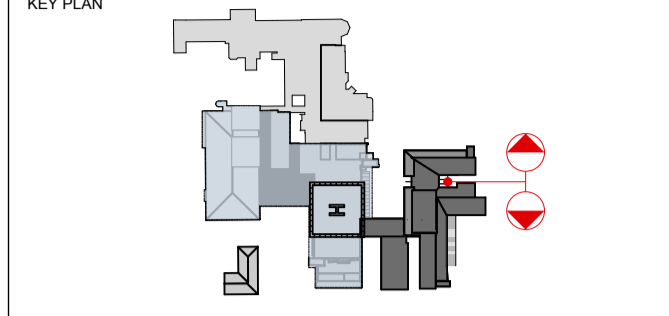
ARCHITECTS
RICE DAUBNEY
 ANALYSING CREATING AND IMPLEMENTING ARCHITECTURE
 110 WALKER STREET (NORTH) SYDNEY 2060
 T: 02 9556 2066 F: 02 9559 3215
 r@ricedaubney.com.au | www.ricedaubney.com.au
 Rice Daubney Group (NSW) Pty Ltd. ABN: 71 001 050 703
 Rice Daubney Trading Trust ABN: 51 680 354 983

PROJECT:
WAGGA WAGGA BASE REDEVELOPMENT PHASE 1
 EDWARD STREET
 WAGGA WAGGA, NSW, 2650

DRAWING TITLE:
GA ELEVATIONS WEST - SHEET 02

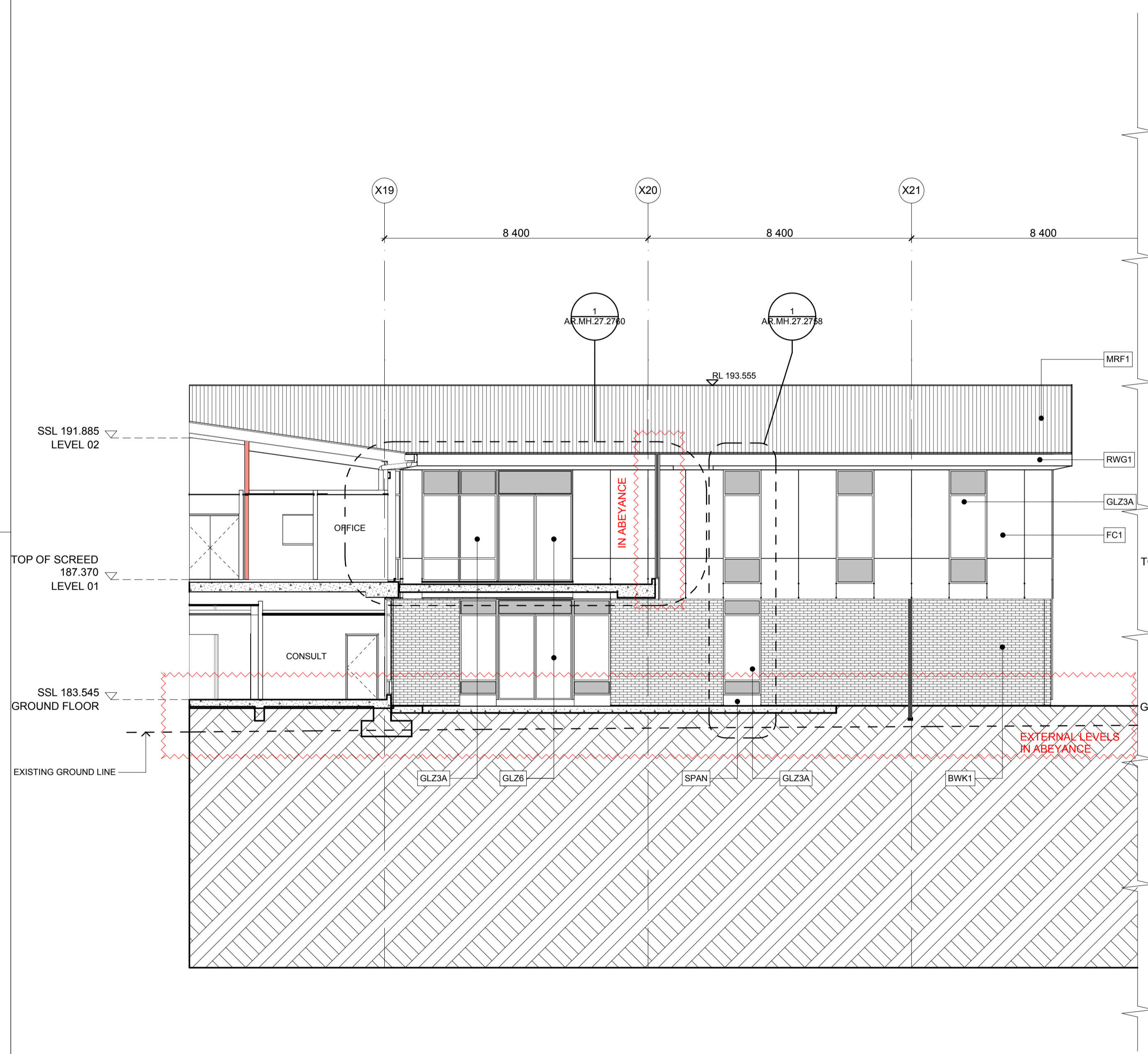
SCALE: AS SHOWN
 PROJECT NUMBER: 10509_1
 DRAWING NUMBER: AR.MH.15.1516
 CHECKED: JS
 ISSUE: C

THIS DOCUMENT IS THE COPYRIGHT OF RICE DAUBNEY AND/OR ITS ASSOCIATES.
 ALL INFORMATION ILLUSTRATED ON THIS DOCUMENT IS TO BE CHECKED AND VERIFIED ON SITE.
 IN THE EVENT OF DISCREPANCIES REFER TO ARCHITECT PRIOR TO COMMENCEMENT OF THE WORK.
 DO NOT SCALE DRAWINGS MANUALLY OR ELECTRONICALLY.

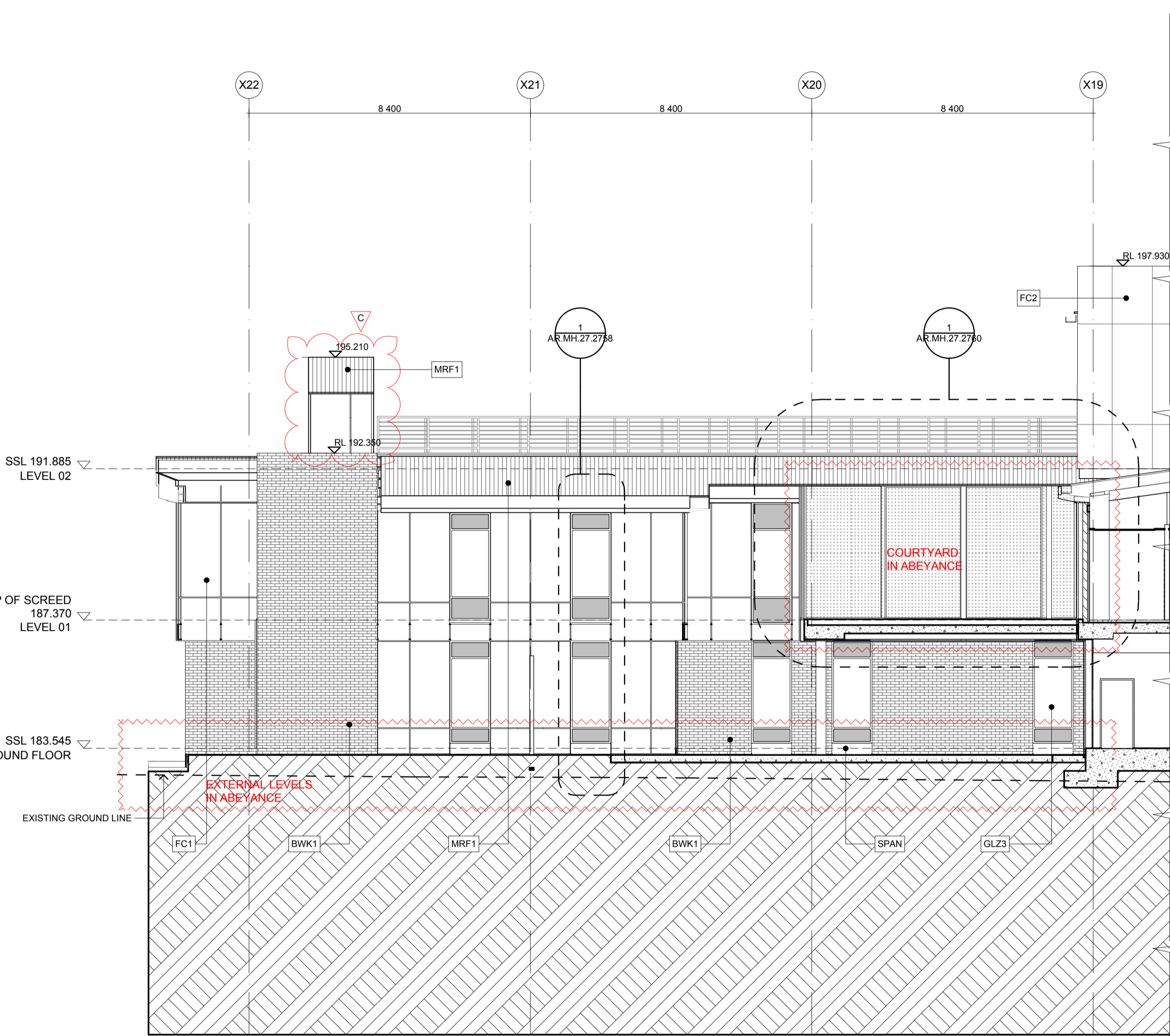


REV	DESCRIPTION OF CHANGE	DRAWN	CHECK	DATE
A	ISSUED FOR INFORMATION	KS	MS	04.11.11
B	ROOF PROFILE TO SUIT VE ITEM 11, PROFILE 3	KS	MS	11.11.11
C	ISSUE FOR CO-ORDINATION	KS	JS	03.02.12

NOTE: ALL SITE LEVELS SUBJECT TO DETAIL SURVEY



1 ELEVATION
 STAFF COURTYARD - SOUTH 1:100



2 ELEVATION
 STAFF COURTYARD - NORTH 1:100

QUANTITY SURVEYOR
Davis Langdon
 An AECOM Company
 L21 420 GEORGE STREET SYDNEY NSW 2000
 P: 02 9956 8822
 W: www.davislangdon.com/ANZ

CONSULTANT
SINCLAIR KNIGHT MERZ
 100 CHRISTIE STREET ST LEONARDS NSW 2065
 P: 02 9928 2100
 W: www.skmconsulting.com

ECI CONTRACTOR
hansen yuncken
 LEVEL 6, 15 BOURKE RD MASCOT NSW 2060
 P: 02 9770 7600
 F: 02 9770 7601
 W: www.hansenyuncken.com.au

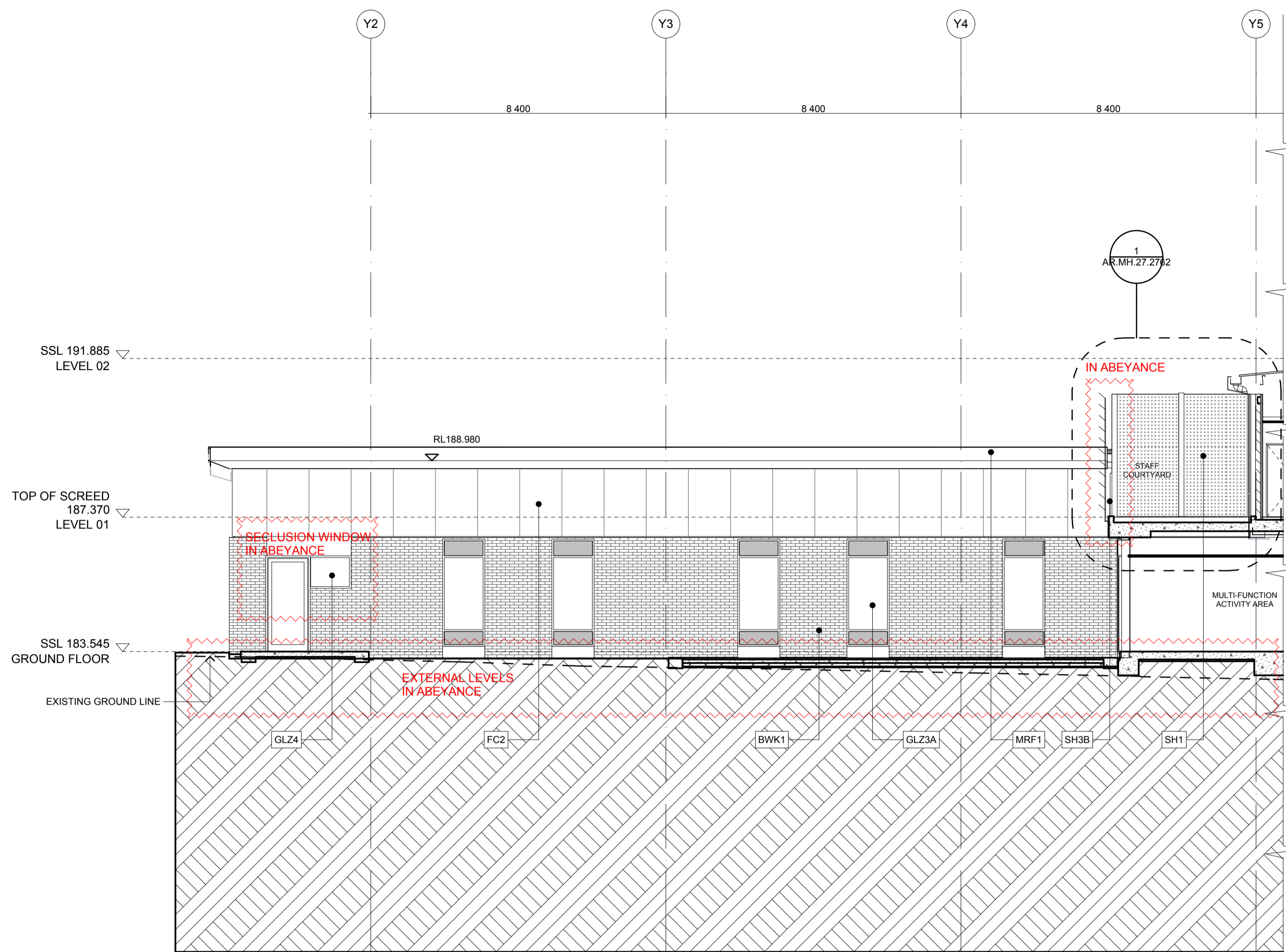
CLIENT
NSW Health Infrastructure
 77 PACIFIC HIGHWAY NORTH SYDNEY NSW 2060
 P: 02 9978 5402
 F: 02 9304 1377
 W: www.hinfra.health.nsw.gov.au

ARCHITECTS
RICE DAUBNEY
 ANALYSING CREATING AND IMPLEMENTING ARCHITECTURE
 110 WALKER STREET (NORTH) SYDNEY 2060
 T: 02 9595 2066 F: 02 9599 3215
 rd@ricedaubney.com.au | www.ricedaubney.com.au
 Rice Daubney Group (Pty) Ltd. ABN: 71 001 250 703
 Rice Daubney Trading Trust - ABN: 56 880 354 980

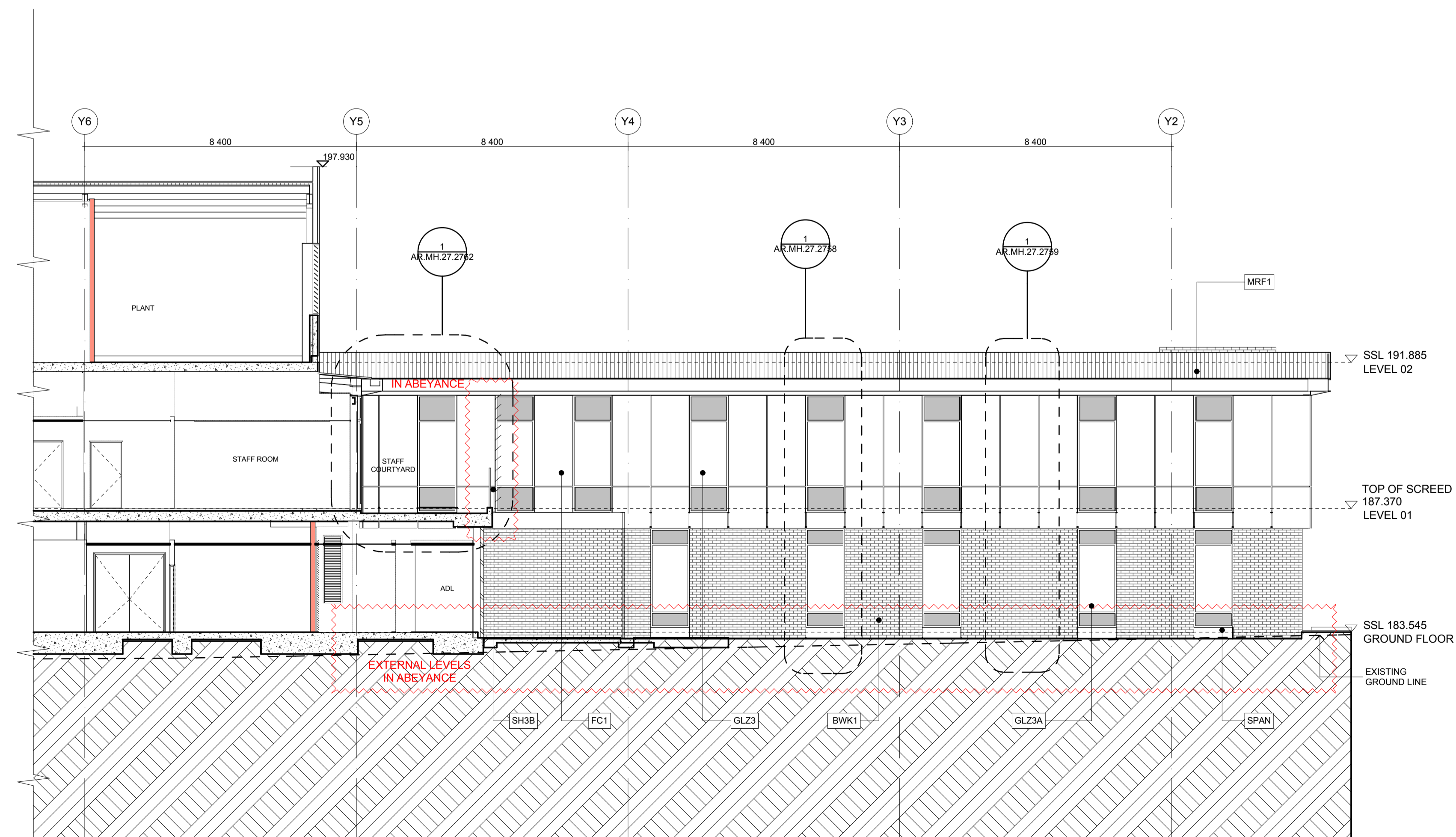
PROJECT:
 WAGGA WAGGA BASE REDEVELOPMENT
 PHASE 1
 EDWARD STREET
 WAGGA WAGGA, NSW, 2650

DRAWING TITLE:
 GA ELEVATIONS
 STAFF COURTYARD

SCALE:	CHECKED:	
AS SHOWN	JS	
PROJECT NUMBER:	DRAWING NUMBER:	ISSUE:
10509_1	AR.MH.15.1517	C

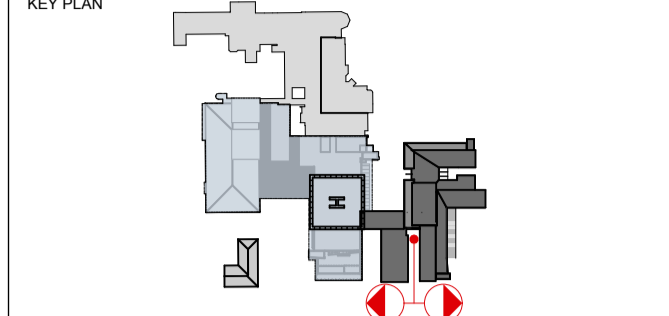


1 ELEVATION
SECURE COURTYARD - EAST 1:100



2 ELEVATION
SECURE COURTYARD - WEST 1:100

THIS DOCUMENT IS THE COPYRIGHT OF RICE DAUBNEY ARCHITECTURE. ALL INFORMATION ILLUSTRATED ON THIS DOCUMENT IS TO BE CHECKED AND VERIFIED ON SITE. IN THE EVENT OF DISCREPANCIES REFER TO ARCHITECT PRIOR TO COMMENCEMENT OF THE WORK. DO NOT SCALE DRAWINGS MANUALLY OR ELECTRONICALLY.



REV	DESCRIPTION OF CHANGE	DRAWN	CHECK	DATE
A	ISSUED FOR INFORMATION	KS	MS	04.11.11
B	ROOF PROFILE TO SUIT VE ITEM 11, PROFILE 3	KS	MS	11.11.11
C	ISSUE FOR CO-ORDINATION	KS	JS	03.02.12

NOTE: ALL SITE LEVELS SUBJECT TO DETAIL SURVEY

QUANTITY SURVEYOR
Davis Langdon
An AECOM Company
L21 420 GEORGE STREET SYDNEY NSW 2000
P: 02 9956 8822
W: www.davislangdon.com/ANZ

CONSULTANT
SINCLAIR KNIGHT MERZ
100 CHRISTIE STREET ST LEONARDS NSW 2065
P: 02 9928 2100
W: www.skmconsulting.com

E/C CONTRACTOR
hansen yuncken
LEVEL 6, 15 BOURKE RD MASCOT NSW 2060
P: 02 9770 7600
F: 02 9770 7601
W: www.hansenyuncken.com.au

CLIENT
NSW Health Infrastructure
77 PACIFIC HIGHWAY NORTH SYDNEY NSW 2060
P: 02 9978 5402
F: 02 9304 1377
W: www.hinfra.health.nsw.gov.au

ARCHITECTS
RICE DAUBNEY
ANALYSING CREATING AND IMPLEMENTING ARCHITECTURE
110 WALKER STREET NORTH SYDNEY 2060
T: 02 9556 2066 F: 02 9559 3215
R: rice@rdaubney.com.au W: www.riceaubney.com.au
RICE DAUBNEY GROUP (INC) ABN: 71 001 050 703
RICE DAUBNEY TRADING TRUST ABN: 58 680 354 980

PROJECT:
WAGGA WAGGA BASE REDEVELOPMENT PHASE 1
EDWARD STREET
WAGGA WAGGA, NSW, 2650

DRAWING TITLE:
**GA ELEVATIONS
SECURE COURTYARD**

SCALE: AS SHOWN CHECKED: JS
PROJECT NUMBER: 10509_1 DRAWING NUMBER: AR.MH.15.1518 C ISSUE: