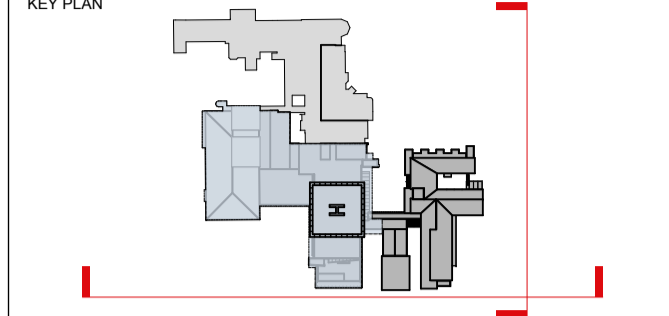
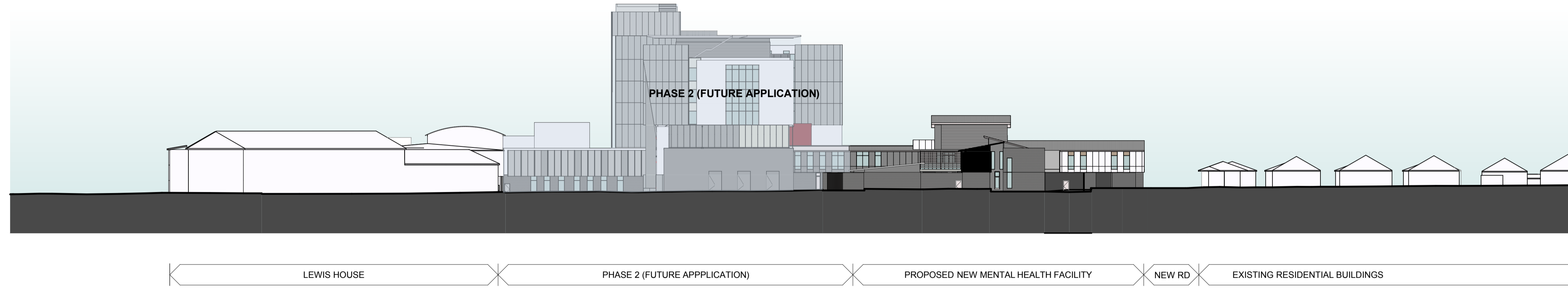


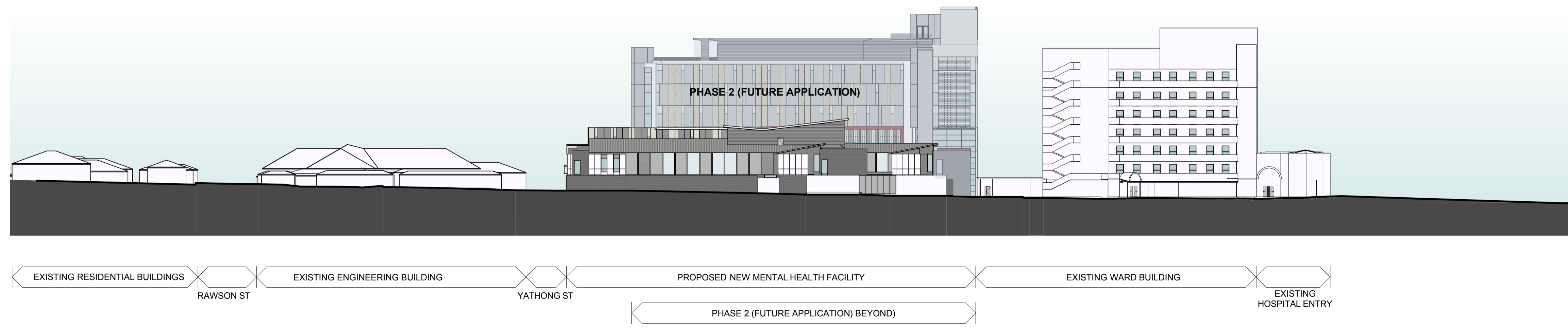
THIS DOCUMENT IS THE COPYRIGHT OF RICE DAUBNEY AND/OR ITS ASSOCIATES. ALL INFORMATION ILLUSTRATED ON THIS DOCUMENT IS TO BE CHECKED AND VERIFIED ON SITE. IN THE EVENT OF DISCREPANCIES REFER TO ARCHITECT PRIOR TO COMMENCEMENT OF THE WORK. DO NOT SCALE DRAWINGS MANUALLY OR ELECTRONICALLY.



REV	DESCRIPTION OF CHANGE	DRAWN	CHECK	DATE
A	ISSUED FOR PART 3A PROJECT APPLICATION PHASE 1	LS	JS	29.08.11



1 SECTION  
A-A SITE ELEVATION 1:500 @A1



2 SECTION  
B-B SITE ELEVATION 1:500 @A1

QUANTITY SURVEYOR  
**Davis Langdon**  
15 100 PACIFIC HIGHWAY P: 02 9956 8822  
NORTH SYDNEY W: www.davislangdon.com/ANZ/  
NSW 2060

CONSULTANT  
**SINCLAIR KNIGHT MERZ**  
100 CHRISTIE STREET P: 02 9928 2330  
ST LEONARDS W: www.skmconsulting.com  
NSW 2065

PROJECT MANAGER  
**CAPITAL INSIGHT**  
77 BERRY STREET P: 02 9955 2300  
NORTH SYDNEY F: 02 9955 5574  
NSW 2060 W: www.capitalinsight.com.au

CONTRACTORS  
**hansen yuncken**  
LEVEL 6, 15 BOURKE RD P: 02 9770 7600  
MASCOT F: 02 9770 7601  
NSW 2060 W: www.capitalinsight.com.au

CLIENT  
**HEALTH INFRASTRUCTURE NSW HEALTH**  
77 PACIFIC HIGHWAY P: 02 9978 5402  
NORTH SYDNEY F: 02 8904 1377  
NSW 2060 W: www.hinfra.health.nsw.gov.au

ARCHITECTS  
**RICE DAUBNEY**  
ANALYSING CREATING AND IMPLEMENTING ARCHITECTURE  
110 WALKER STREET | NORTH SYDNEY 2060  
T: 02 9556 2066 F: 02 9559 3215  
rda@ricedaubney.com.au | www.ricedaubney.com.au  
Rice Daubney Group (Pty) Ltd. ABN: 71 001 850 763  
Rice Daubney Trading Trust ABN: 58 880 354 983

PROJECT:  
WAGGA WAGGA BASE REDEVELOPMENT  
STAGES 1A, 1B & 2A  
EDWARD STREET  
WAGGA WAGGA, NSW, 2650

DRAWING TITLE:  
PHASE 1  
GA ELEVATIONS  
SITE CONTEXT ELEVATIONS

SCALE:	CHECKED:
AS SHOWN	JS
PROJECT NUMBER:	DRAWING NUMBER:
10509_1	DA 1510
	ISSUE:
	A