

Notice of Modification

Section 75W of the *Environmental Planning and Assessment Act 1979*

As delegate of the Minister for Planning, I modify the project approval referred to in Schedule 1, as set out in Schedule 2.



Clay Preshaw
Director
Resource and Energy Assessments

Sydney 6 SEPTEMBER 2018

SCHEDULE 1

The project approval (11_0060) for the Northparkes Mine Step Change Project, granted by the Executive Director, Development Assessment Systems and Approvals, under delegation from the Minister for Planning and Environment on 16 July 2014.

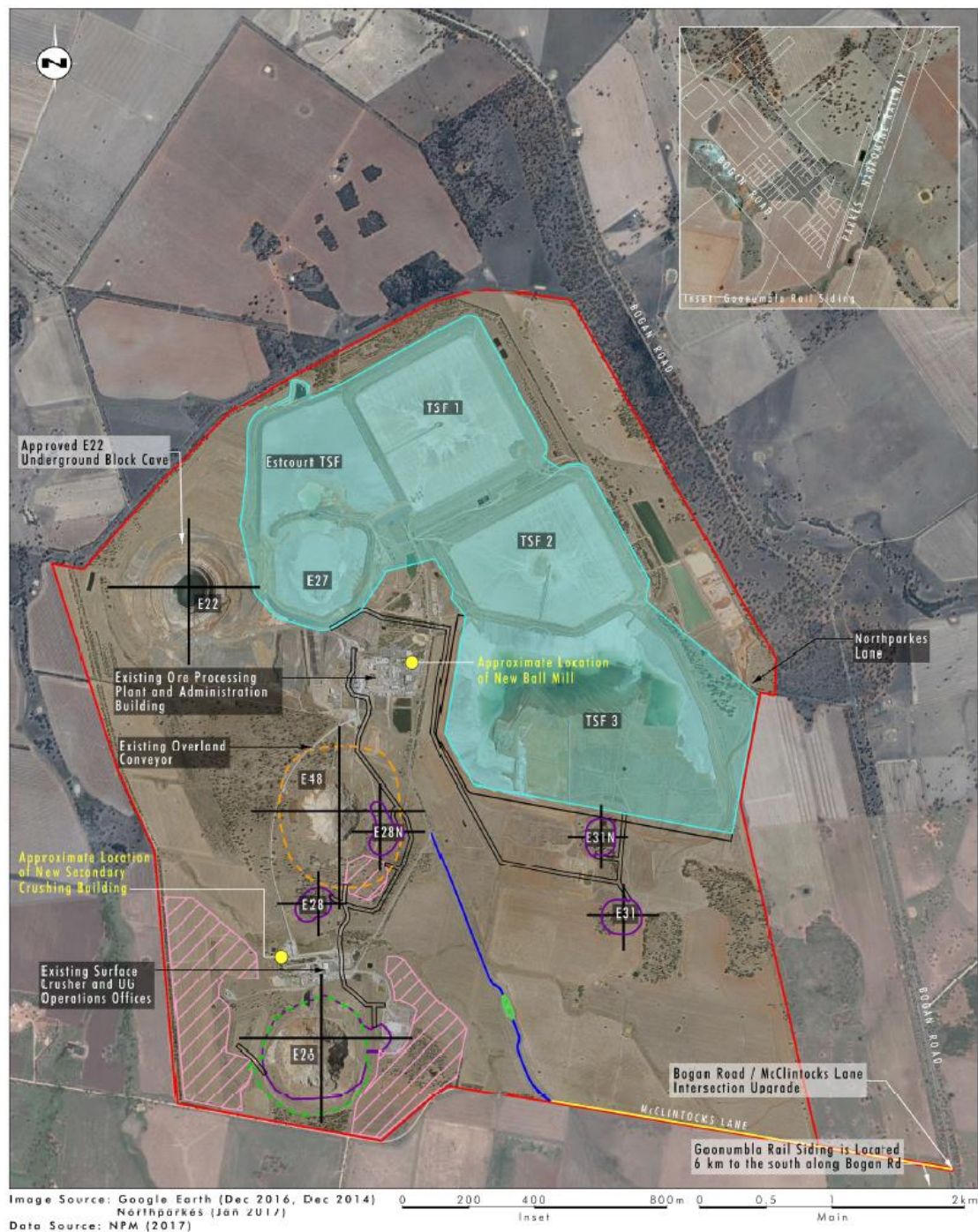
SCHEDULE 2

1. In Schedule 1, Definitions:
 - (a) Delete the definition of DPI Water and replace with:
DoI Lands & Water Department of Industry – Lands and Water;
 - (b) In the definition of 'EIS', insert the following after the last paragraph:
 - The Environmental Assessment titled *Environmental Assessment for Section 75W Modification to Project Approval 11_0060 – Northparkes Mines Proposed Changes to Ore Processing Infrastructure and Administrative Amendments* dated 19 July 2018
2. Delete all references to "DPI Water" and replace with "DoI Lands & Water"
3. In Schedule 3, Condition 7, after the text "The Proponent shall only carry out", insert the word "surface".
4. In Appendix 1, delete the Schedule of Land and replace with:

Lot	DP	PROJECT APPROVAL OWNER	CURRENT OWNER
46	753998	PEKO-WALLSEND OPEATIONS LTD	CMOC MINING PTY LTD
1	818783	NORTH MINING LTD	CMOC MINING PTY LTD
41	753998	PEKO-WALLSEND OPEATIONS LTD	CMOC MINING PTY LTD
49	753998	NORTH MINING LTD	CMOC MINING PTY LTD
100	1207194	PEKO-WALLSEND OPEATIONS LTD	CMOC MINING PTY LTD
1	848944	STATE RAIL AUTHORITY OF NSW	
1	952674	STATE RAIL AUTHORITY OF NSW	
7001	1115837	THE STATE OF NSW	
10	1132130	NORTH MINING LTD	CMOC MINING PTY LTD
51	753998	THE STATE OF NSW	
7001	1116929	THE STATE OF NSW	
1	831622	PEKO-WALLSEND OPEATIONS LTD	CMOC MINING PTY LTD
2	830291	PEKO-WALLSEND OPEATIONS LTD	CMOC MINING PTY LTD
3	831119	PEKO-WALLSEND OPEATIONS LTD	CMOC MINING PTY LTD

Lot	DP	PROJECT APPROVAL OWNER	CURRENT OWNER
12	753998	PEKO-WALLSEND OPEATIONS LTD	CMOC MINING PTY LTD
1	830291	PEKO-WALLSEND OPEATIONS LTD	CMOC MINING PTY LTD
1	831119	PEKO-WALLSEND OPEATIONS LTD	CMOC MINING PTY LTD
382	1108642	NORTH MINING LTD	CMOC MINING PTY LTD
381	1108642	CROWN LAND	
43	1120299	NORTH MINING LTD	CMOC MINING PTY LTD
41	1120299	NORTH MINING LTD	CMOC MINING PTY LTD
42	1120299	NORTH MINING LTD	THE STATE OF NSW
3	830291	PEKO-WALLSEND OPEATIONS LTD	CMOC MINING PTY LTD
7002	1116907	THE STATE OF NSW	
Between Lot 3 DP830291 and Lot 49 DP753998		CROWN LAND (CMOC APPLICATION TO PURCHASE REFERENCE #DPI W563265)	

5. In Appendix 2, delete the figure titled "Conceptual Mine Plan Layout" and replace with:



Legend

- ▬ Project Area
- ▬ Approved F26 Subsidence Area
- ▬ Approved E48 Subsidence Area
- ▬ Approved Tailings Storage Facility
- ▬ Approved Open Cut Areas
- ▬ Approved Upgrade to McClintocks Lane
- ▬ Approved Waste Dumps
- ▬ Access Control and Visitor Car Park
- ▬ Site Access Road
- ▬ Approved Haul Road
- ▬ Transect

FIGURE 1

Approved Operations and
Location of Proposed Additional
Ore Processing Infrastructure