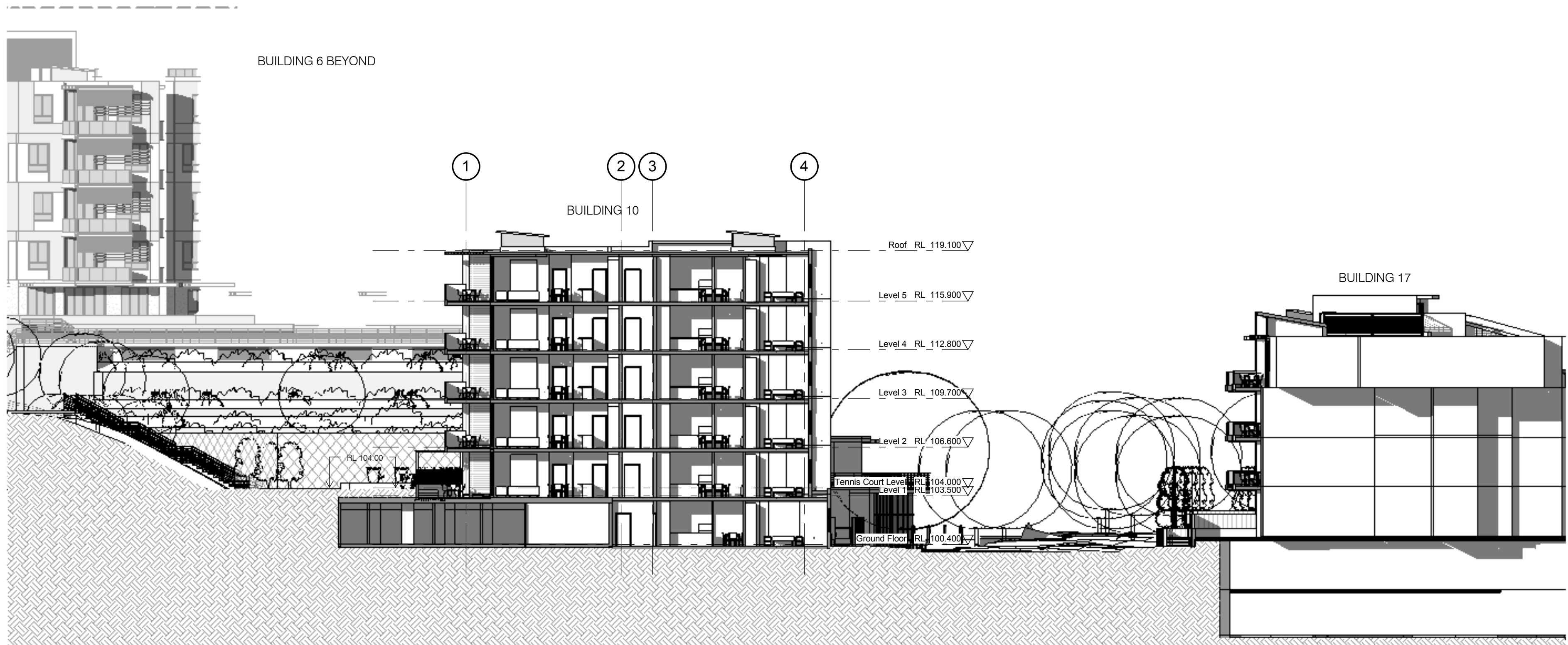
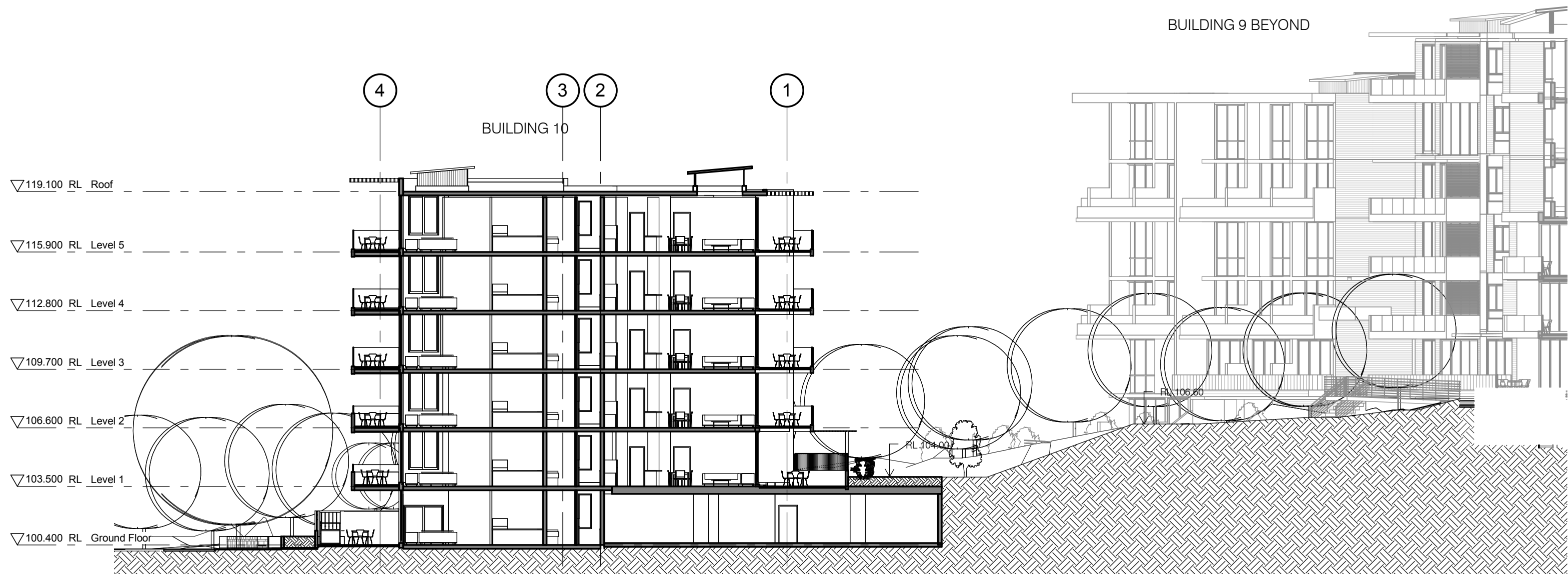


1 SITE PLAN
1:200

Do not scale from drawings. Verify all dimensions on site before commencing work. Copyright or reproduction of the drawing is strictly prohibited. The Architect shall not be liable for any loss or damage, including any loss of profit, arising from the use of the drawing for any purpose other than that for which it was prepared. The recipient of the data shall be responsible for ensuring accuracy and consistency of data entered on the user's file. The CAD files and their contents are supplied as a guide only. The user is responsible for ensuring the accuracy of the data entered on the user's file. The user is responsible for ensuring the accuracy of the data entered on the user's file.		<table><tr><th>REV</th><th>DATE</th><th>AMENDMENT</th></tr><tr><td>A</td><td>11.03.2011</td><td>PRELIMINARY ISSUE FOR COORDINATION</td></tr><tr><td>B</td><td>18.03.2011</td><td>FINAL DRAFT FOR PA ISSUE</td></tr><tr><td>C</td><td>08.04.2011</td><td>FINAL DRAFT FOR PA ISSUE</td></tr><tr><td>D</td><td>19.04.2011</td><td>REVISED FINAL DRAFT ISSUE</td></tr><tr><td>E</td><td>08.06.2011</td><td>FINAL ISSUE FOR PA APPLICATION</td></tr><tr><td>F</td><td>11.01.2012</td><td>REVISED APPLICATION</td></tr><tr><td>G</td><td>13.03.2012</td><td>REVISED APPLICATION</td></tr></table>		REV	DATE	AMENDMENT	A	11.03.2011	PRELIMINARY ISSUE FOR COORDINATION	B	18.03.2011	FINAL DRAFT FOR PA ISSUE	C	08.04.2011	FINAL DRAFT FOR PA ISSUE	D	19.04.2011	REVISED FINAL DRAFT ISSUE	E	08.06.2011	FINAL ISSUE FOR PA APPLICATION	F	11.01.2012	REVISED APPLICATION	G	13.03.2012	REVISED APPLICATION	<table><tr><th>CONSULTANTS</th></tr><tr><td>Landscape Arch: Sturt Associates Soil Access: Heggies Traffic: TTP Nathans/Basis: Efficient Living Acoustic: Acoustic Logic</td><td>Suite 91, Level 5, 330 Wattle Street, Ultimo NSW 2007 Suite 603, Level 6, 282 Victoria Ave, Chesham NSW 2067 24/6176 South Creek Road, Crows Nest NSW 2059 9 Sarah Street, Mascot NSW 2020</td><td>Tel: 0211 5744 Tel: 9427 6100 Tel: 9411 5960 Tel: 9544 0032 Tel: 8338 9888</td></tr></table>		CONSULTANTS	Landscape Arch: Sturt Associates Soil Access: Heggies Traffic: TTP Nathans/Basis: Efficient Living Acoustic: Acoustic Logic	Suite 91, Level 5, 330 Wattle Street, Ultimo NSW 2007 Suite 603, Level 6, 282 Victoria Ave, Chesham NSW 2067 24/6176 South Creek Road, Crows Nest NSW 2059 9 Sarah Street, Mascot NSW 2020	Tel: 0211 5744 Tel: 9427 6100 Tel: 9411 5960 Tel: 9544 0032 Tel: 8338 9888	<table><tr><th>CLIENT</th></tr><tr><td>Meriton Apartments Pty. Ltd. Buildings & Developers</td><td>Level 11, 528 Kent Street, Sydney NSW 2000 Tel: (02) 9287 2888 Fax: (02) 9287 2777</td><td>Email: info@meriton.com.au Internet: http://www.meriton.com.au</td></tr></table>		CLIENT	 Meriton Apartments Pty. Ltd. Buildings & Developers	Level 11, 528 Kent Street, Sydney NSW 2000 Tel: (02) 9287 2888 Fax: (02) 9287 2777	Email: info@meriton.com.au Internet: http://www.meriton.com.au	<table><tr><th>PTW Architects</th></tr><tr><td>Level 17, 9 Castlereagh St Sydney NSW Australia 2000</td><td>T +612 9232 5877 F +612 9221 4139</td></tr></table>		PTW Architects	Level 17, 9 Castlereagh St Sydney NSW Australia 2000	T +612 9232 5877 F +612 9221 4139	<table><tr><th>Key Plan</th></tr><tr><td></td></tr></table>		Key Plan		<table><tr><th>Project</th></tr><tr><td>EPPING PARK - STAGE 2 BUILDING 10 61 MAXBYS LANE, EPPING BUILDINGS 6,9,10,17</td></tr><tr><td>Scale: 1:200 @B1 Plot Date: 3/15/2012 12:05:49 PM Job No: 211.006 Dwg No: A1002 Drawn By: DB/FWC/R Checked By: PSC Revision: G Status: PRELIMINARY</td></tr></table>		Project	EPPING PARK - STAGE 2 BUILDING 10 61 MAXBYS LANE, EPPING BUILDINGS 6,9,10,17	Scale: 1:200 @B1 Plot Date: 3/15/2012 12:05:49 PM Job No: 211.006 Dwg No: A1002 Drawn By: DB/FWC/R Checked By: PSC Revision: G Status: PRELIMINARY
REV	DATE	AMENDMENT																																																			
A	11.03.2011	PRELIMINARY ISSUE FOR COORDINATION																																																			
B	18.03.2011	FINAL DRAFT FOR PA ISSUE																																																			
C	08.04.2011	FINAL DRAFT FOR PA ISSUE																																																			
D	19.04.2011	REVISED FINAL DRAFT ISSUE																																																			
E	08.06.2011	FINAL ISSUE FOR PA APPLICATION																																																			
F	11.01.2012	REVISED APPLICATION																																																			
G	13.03.2012	REVISED APPLICATION																																																			
CONSULTANTS																																																					
Landscape Arch: Sturt Associates Soil Access: Heggies Traffic: TTP Nathans/Basis: Efficient Living Acoustic: Acoustic Logic	Suite 91, Level 5, 330 Wattle Street, Ultimo NSW 2007 Suite 603, Level 6, 282 Victoria Ave, Chesham NSW 2067 24/6176 South Creek Road, Crows Nest NSW 2059 9 Sarah Street, Mascot NSW 2020	Tel: 0211 5744 Tel: 9427 6100 Tel: 9411 5960 Tel: 9544 0032 Tel: 8338 9888																																																			
CLIENT																																																					
 Meriton Apartments Pty. Ltd. Buildings & Developers	Level 11, 528 Kent Street, Sydney NSW 2000 Tel: (02) 9287 2888 Fax: (02) 9287 2777	Email: info@meriton.com.au Internet: http://www.meriton.com.au																																																			
PTW Architects																																																					
Level 17, 9 Castlereagh St Sydney NSW Australia 2000	T +612 9232 5877 F +612 9221 4139																																																				
Key Plan																																																					
																																																					
Project																																																					
EPPING PARK - STAGE 2 BUILDING 10 61 MAXBYS LANE, EPPING BUILDINGS 6,9,10,17																																																					
Scale: 1:200 @B1 Plot Date: 3/15/2012 12:05:49 PM Job No: 211.006 Dwg No: A1002 Drawn By: DB/FWC/R Checked By: PSC Revision: G Status: PRELIMINARY																																																					



D Site Section D
1 : 200



E Site Section E
1 : 200



F Site Section F
1 : 200

On site dimensions on drawings										DATE										AMENDMENT										CONSULTANTS:										CLIENT:										PTW ARCHITECTS										PTW										KEY PLAN:										PROJECT:										BUILDING 10										SCALE:										PLOT DATE:										JOB NO:										DWG NO:										DRAWN BY:										CHECKED BY:										REVISIONS:										STATUS:										PRELIMINARY																																																																																																																																																																																																																																																																																																																																																																																																																																																																																																																																																																																																																																																																																																																																																																																																																																																																																																																																																																																																																																																																																																																																																																																																																																																																																																																																																																																																																																																																																																																																																																																																																																																																																																																																																																																																																																																																																																																																																																																																																																																																																																																																																																																																																																																																																																																																																																																																																																																																																																																																																																																																																																																																																																																																																																																																																																																																																																																																																																																																																																																																																																																																																																																																																																					
Verify all dimensions on site before commencing work.										11.03.2011										PRELIMINARY ISSUE FOR COORDINATION										LANDSCAPE ARCH										STURT ASSOCIATES										SUITE 91, LEVEL 5, 330 WATTS STREET, ULTIMO NSW 2007										TEL: 9211 31744										PTW										LEVEL 17, 9 CASTLEAGH ST										T +612 9232 5877										F +612 9221 4139										EPPING PARK - STAGE 2										BUILDING 10										1 : 200 @B1										3/15/2012										211.006										A1003										Author										Checker										G										PRELIMINARY																																																																																																																																																																																																																																																																																																																																																																																																																																																																																																																																																																																																																																																																																																																																																																																																																																																																																																																																																																																																																																																																																																																																																																																																																																																																																																																																																																																																																																																																																																																																																																																																																																																																																																																																																																																																																																																																																																																																																																																																																																																																																																																																																																																																																																																																																																																																																																																																																																																																																																																																																																																																																																																																																																																																																																																																																																																																																																																																																																																																																																																																																																																																																																																																																	
Copy or reproduction of this drawing is strictly prohibited without the consent of Epping Shire Council Pty Ltd										18.03.2011										FINAL DRAFT FOR PA ISSUE										SOLAR ACCESS										HAGGIES										2 LINCOLN STREET, LANE COVE NSW										TEL: 9427 8100										PTW										LEVEL 17, 9 CASTLEAGH ST										T +612 9232 5877										F +612 9221 4139										EPPING PARK - STAGE 2										BUILDING 10										1 : 200 @B1										3/15/2012										211.006										A1003										Author										Checker										G										PRELIMINARY																																																																																																																																																																																																																																																																																																																																																																																																																																																																																																																																																																																																																																																																																																																																																																																																																																																																																																																																																																																																																																																																																																																																																																																																																																																																																																																																																																																																																																																																																																																																																																																																																																																																																																																																																																																																																																																																																																																																																																																																																																																																																																																																																																																																																																																																																																																																																																																																																																																																																																																																																																																																																																																																																																																																																																																																																																																																																																																																																																																																																																																																																																																																																																																																																	
whenever arising from or in respect of any errors, omissions or misstatements in this document transferred from the computer system of the Architect to systems of the Client or other Contractors.										08.04.2011										REVISED FINAL DRAFT ISSUE										TRAFFIC										TPP										SUITE 603, LEVEL 6, 282 VICTORIA AVE, CHATSWOOD NSW 2067										TEL: 9411 5660										PTW										LEVEL 17, 9 CASTLEAGH ST										T +612 9232 5877										F +612 9221 4139										EPPING PARK - STAGE 2										BUILDING 10										1 : 200 @B1										3/15/2012										211.006										A1003										Author										Checker										G										PRELIMINARY																																																																																																																																																																																																																																																																																																																																																																																																																																																																																																																																																																																																																																																																																																																																																																																																																																																																																																																																																																																																																																																																																																																																																																																																																																																																																																																																																																																																																																																																																																																																																																																																																																																																																																																																																																																																																																																																																																																																																																																																																																																																																																																																																																																																																																																																																																																																																																																																																																																																																																																																																																																																																																																																																																																																																																																																																																																																																																																																																																																																																																																																																																																																																																																																																	
The recipient of the data shall be responsible for checking accuracy and consistency of data received.										19.04.2011										FINAL ISSUE FOR PA APPLICATION										NATHERS/BASIK										EFFICIENT LIVING										248/176 SOUTH CREEK ROAD, CRONIN NSW 2099										TEL: 9944 0332										PTW										LEVEL 17, 9 CASTLEAGH ST										T +612 9232 5877										F +612 9221 4139										EPPING PARK - STAGE 2										BUILDING 10										1 : 200 @B1										3/15/2012										211.006										A1003										Author										Checker										G										PRELIMINARY																																																																																																																																																																																																																																																																																																																																																																																																																																																																																																																																																																																																																																																																																																																																																																																																																																																																																																																																																																																																																																																																																																																																																																																																																																																																																																																																																																																																																																																																																																																																																																																																																																																																																																																																																																																																																																																																																																																																																																																																																																																																																																																																																																																																																																																																																																																																																																																																																																																																																																																																																																																																																																																																																																																																																																																																																																																																																																																																																																																																																																																																																																																																																																																																																	
Any use of the electronic data in part or whole shall be at the Client's risk.										11.01.2012										REVISED APPLICATION										ACOUSTIC										ACOUSTIC LOGIC										9 SARAH STREET, MASCOT NSW 2020										TEL: 8338 9888										PTW										LEVEL 17, 9 CASTLEAGH ST										T +612 9232 5877										F +612 9221 4139										EPPING PARK - STAGE 2										BUILDING 10										1 : 200 @B1										3/15/2012										211.006										A1003										Author										Checker										G										PRELIMINARY																																																																																																																																																																																																																																																																																																																																																																																																																																																																																																																																																																																																																																																																																																																																																																																																																																																																																																																																																																																																																																																																																																																																																																																																																																																																																																																																																																																																																																																																																																																																																																																																																																																																																																																																																																																																																																																																																																																																																																																																																																																																																																																																																																																																																																																																																																																																																																																																																																																																																																																																																																																																																																																																																																																																																																																																																																																																																																																																																																																																																																																																																																																																																																																																																	
The CAD files and their contents are solely representations of the project information and cannot be relied upon beyond the representation shown on PDF versions of the drawings as provided by the Architect.										13.03.2012										REVISED APPLICATION																																																																																																																																																																																																																																																																																																																																																																																																																																																																																																																																																																																																																																																																																																																																																																																																																																																																																																																																																																																																																																																																																																																																																																																																																																																																																																																																																																																																																																																																																																																																																																																																																																																																																																																																																																																																																																																																																																																																																																																																																																																																																																																																																																																																																																																																																																																																																																																																																																																																																																																																																																																																																																																																																																																																																																																																																																																																																																																																																																																																																																																																																																																																																																																																																																																																																																																																																																																																					