



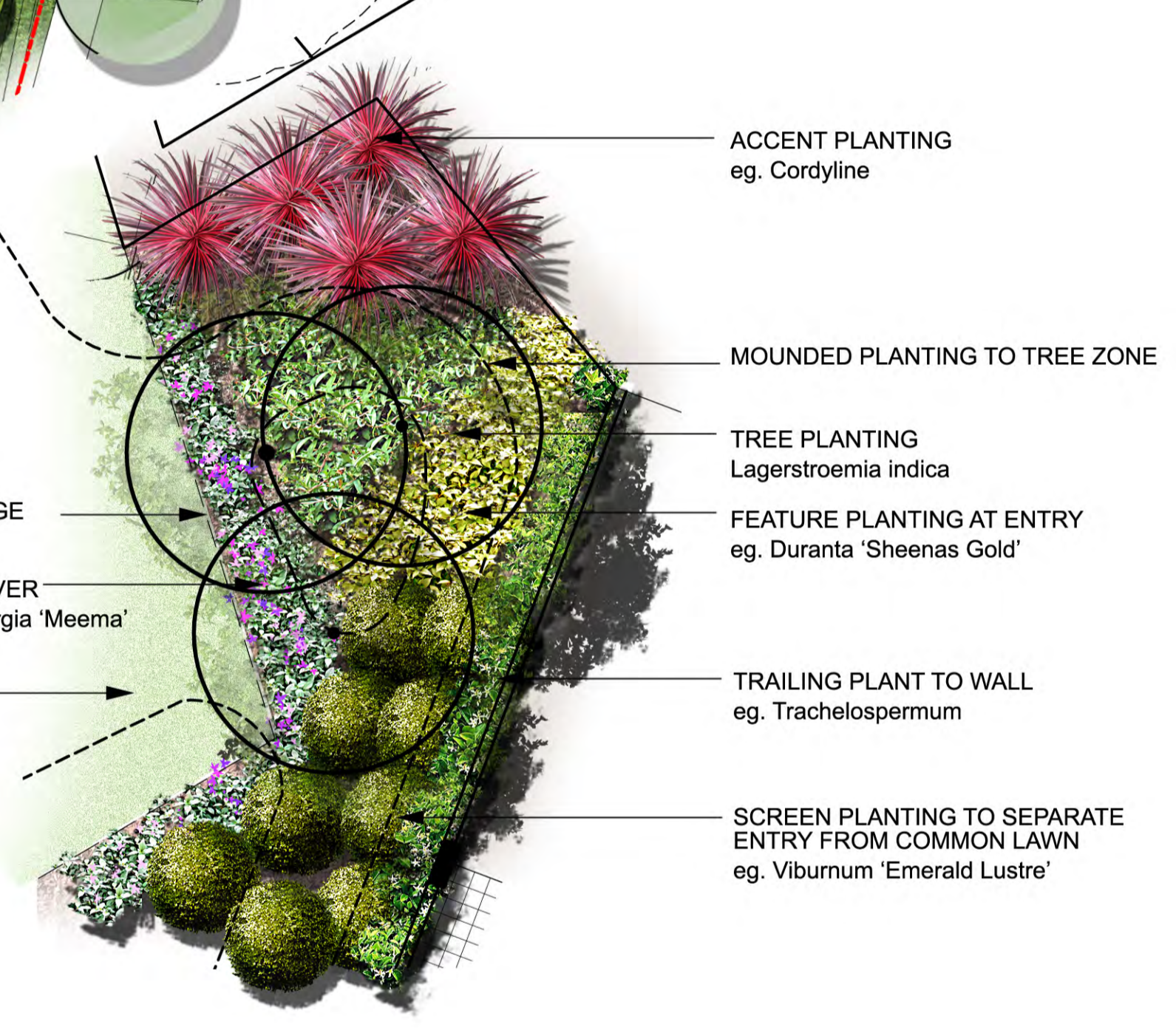


### LEGEND

- STAGE BOUNDARY
- PROPOSED TREES  
REFER TO INDICATIVE PLANT SCHEDULE
- PROPOSED STREET TREES  
REFER STREETScape PLAN
- PROPOSED HEDGE PLANTING  
REFER TO INDICATIVE PLANT SCHEDULE
- LAWN AREA
- PROPOSED SHRUBS & GROUNDCOVERS  
REFER TO INDICATIVE PLANT SCHEDULE
- PATH & PAVING  
REFER TO ARCHITECTS DETAILS
- UNIT PAVING TO COURTYARDS  
REFER TO ARCHITECTS DWG
- SANDSTONE RIP RAP RETAINING WALL

### INDICATIVE PLANT SCHEDULE - STAGE 3

SYM	SPECIES	COMMON NAME	SIZE	SPACING	MATURE HEIGHT	QTY
<b>INDIVIDUAL TREES</b>						
ANC	Angophora costata	Smooth Barked Apple	100 litre	as shown	25m	1
ANS	Acer negundo 'Sensation'	Box Elder Mapl	300 litre	as shown	8-9m	3
APS	Acer palmatum 'Senkaki'	Japanese Maple	300 litre	as shown	6m	9
ELE	Elaeocarpus eumundi	Smooth-leaved Quandong	100 litre	as shown	8m	10
ELR	Elaeocarpus reticulatus 'Prima Donna'	Blueberry Ash	300 litre	as shown	10m	32
FLA	Flindersia australis	Crows Ash	300 litre	as shown	7-10m	3
FRR	Fraxinus raywoodii	Raywood Ash	200 litre	as shown	20m	9
GLS	Gleditsia sunburst	Golden Honey Locust	200 litre	as shown	15m	41
LAI	Lagerstroemia indica	Crepe Myrtle	100 litre	as shown	4-8m	28
PYC	Pyrus calleryana 'Chanticleer'	Chanticleer Callery Pear	100 litre	as shown	11m	56
TRL	Tristaniopsis laurina	Water Gum	100 litre	as shown	10m	14
WAF	Waterhousia floribunda	Weeping Lilly Pilly	200 litre	as shown	15m	30
<b>ENDEMIC TREES</b>						
ANF	Angophora floribunda	Rough-barked Apple	25 litre	as shown		15
COG	Corymbia gummifera	Red Bloodwood	25 litre	as shown		15
ELR	Elaeocarpus reticulatus	Blueberry Ash	25 litre	as shown		15
EUP	Eucalyptus paniculata	Grey Ironbark	25 litre	as shown		15
EUS	Eucalyptus saligna	Sydney Blue Gum	25 litre	as shown		15
SYG	Syncarpia glomulifera	Turpentine	25 litre	as shown		15
<b>HEDGES</b>						
	Acmena smithii "Minor"	Dwarf Acmena	45 litre	1000mm	4-10m	
	Magnolia "Little Gem"	Dwarf Magnolia	45 litre	1000mm	6m	
	Syzygium paniculatum dwarf	Dwarf Lilly Pilly	45 litre	1000mm	3-5m	
	Viburnum odoratissimum "Emerald Lustre"	Viburnum	45 litre	1000mm	3m	
<b>LOW HEDGES</b>						
	Acacia pravissima "Little Nugget"	Wattle	200mm	500mm	1m	
	Acmena "Ailyns Magic"	Dwarf Lilly Pilly	200mm	600mm	1-4m	
	Correa "Dusky Bells"	Native Fuschia	200mm	500mm	0.8m	
	Escallonia "Donard Beauty"	Escallonia	45 Litre	800mm	2m	
	Raphiolepis indica	Indian Hawthorn	45 litre	800mm	2.4m	
<b>GROUNDCOVERS</b>						
	Anigozanthos "Ruby Velvet"	Kangaroo Paw	140mm	300mm	0.05-0.1m	
	Agave attenuata	Agave	25 Litre	400mm	1m	
	Ajuga reptans "Catlin's Giant"	Blue bugle	140mm	300mm	0.45m	
	Baeckea virgata dwarf	Dwarf Baeckea	200mm	500mm	0.5-1m	
	Brachycome multifida	Cutleaf Daisy	140mm	300mm	0.4m	
	Cordyline Red Fountain	Red cordyline	200mm	400mm	1m	
	Dianella caerulea	Flax Lily	140mm	300mm	0.75m	
	Dianella "Silver Streak"	Variegated Flax Lily	140mm	300mm	0.5m	
	Dietes robinsoniana	Wedding Lily	200mm	400mm	1.5m	
	Duranta 'Sheena's Gold'	Golden Duranta	200mm	400mm	1-3m	
	Eriostemon "Stardust"	Waxflower	200mm	400mm	1.5-2m	
	Festuca glauca	Blue fescue	140mm	300mm	0.14-0.18m	
	Grevillea lanigera "Mt Tamboritha"	Woolly Grevillea	140mm	400mm	0.3m	
	Hardenbergia violaceae "Meema"	Sarsparilla	140mm	400mm	0.5m	
	Hymenocallis littoralis	Spider Lily	200mm	400mm	0.6-0.7m	
	Liriope muscari	Turf Lily	140mm	300mm	0.3-0.45m	
	Liriope muscari "Evergreen Giant"	Giant turf lily	140mm	400mm	0.6m	
	Liriope "Silver Dragon"	Variegated turf lily	140mm	300mm	0.3m	
	Lomandra hystrix	Spiny-headed Matrush	140mm	400mm	1.5m	
	Lomandra "Tanika"	Matrush	140mm	400mm	0.5-0.6m	
	Lomandra "Nyalla"	Blue Matrush	140mm	400mm	0.6m	
	Sedum "Autumn Joy"	Stonecrop	200mm	400mm	0.6m	
	Zephyranthes candida	Autumn crocus	140mm	300mm	0.12-0.15m	



- ACCENT PLANTING  
eg. Cordyline
- MOUNDED PLANTING TO TREE ZONE
- TREE PLANTING  
Lagerstroemia indica
- FEATURE PLANTING AT ENTRY  
eg. Duranta 'Sheenas Gold'
- TRAILING PLANT TO WALL  
eg. Trachelospermum
- SCREEN PLANTING TO SEPARATE ENTRY FROM COMMON LAWN  
eg. Viburnum 'Emerald Lustre'

1 EPPING PARK STAGE 3 BUILDING 17  
SCALE 1:250

2 INDICATIVE PLANTING LAYOUT TO PODIUM  
SCALE 1:100



Acer palmatum 'Senkaki'    Acer negundo 'Sensation'    Elaeocarpus reticulatus 'Prima Donna'    Lagerstroemia indica    Flindersia australis    Fraxinus raywoodii    Acmena smithii 'Minor'    Magnolia 'Little Gem'

Viburnum 'Emerald Lustre'    Acacia sp.    Correa 'Dusky Bells'    Raphiolepis indica    Anigozanthos 'Ruby Velvet'    Agave attenuata    Cordyline 'Red Fountain'    Grevillea lanigera 'Mt Tamboritha'

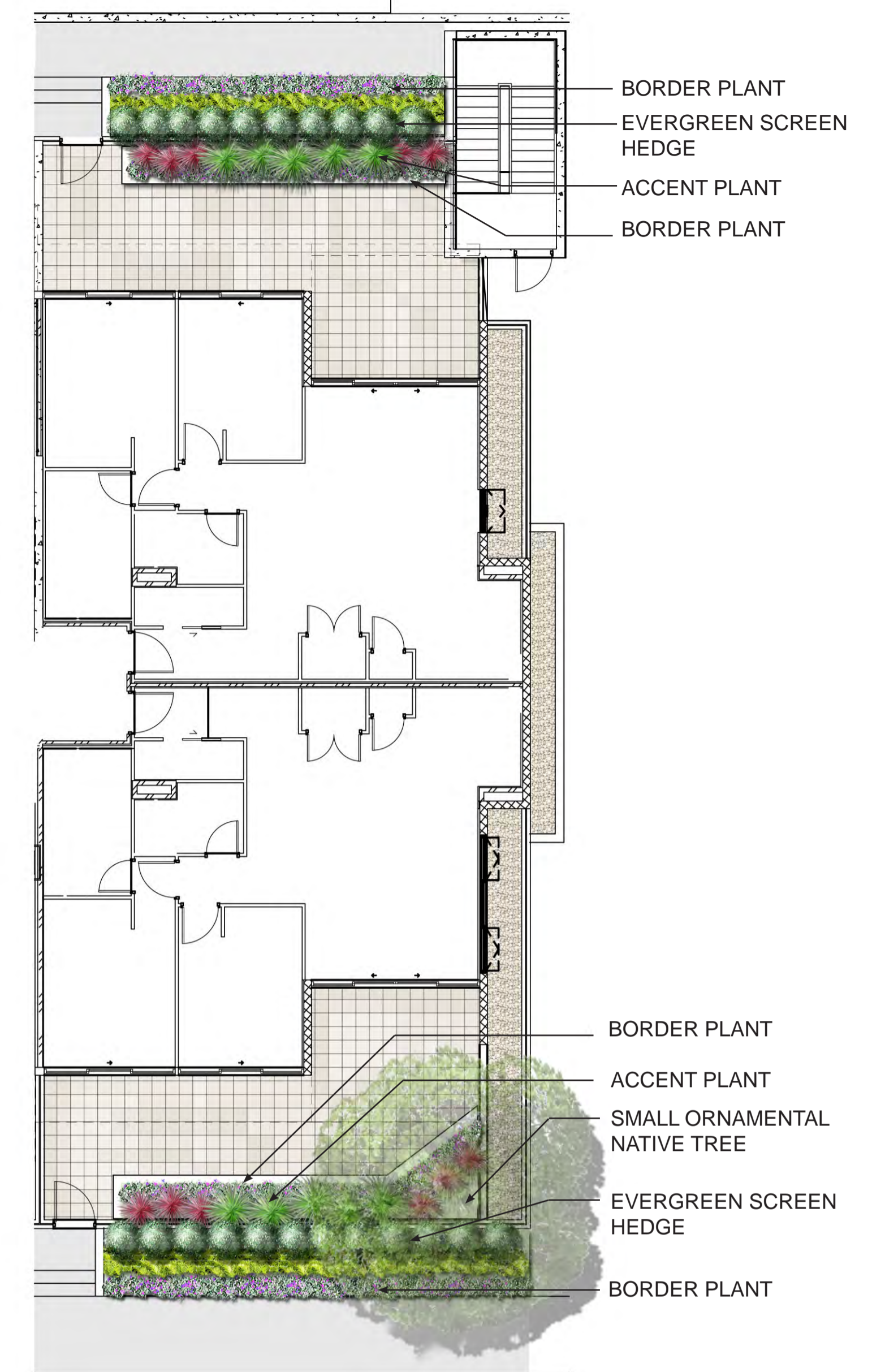
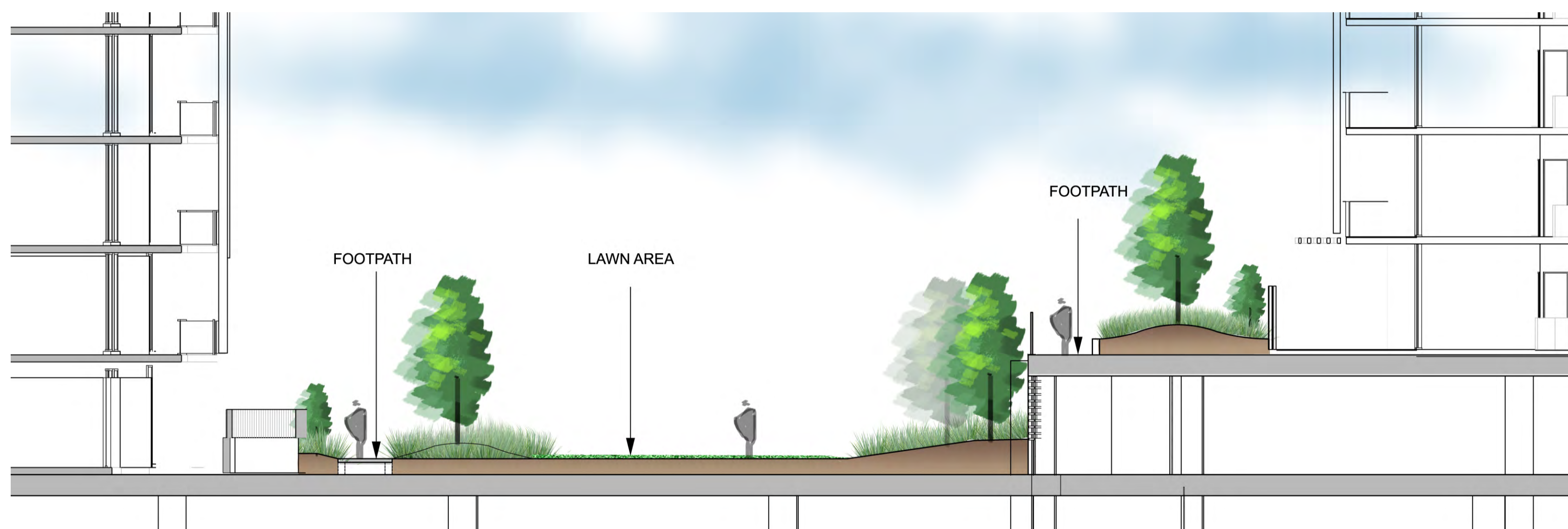
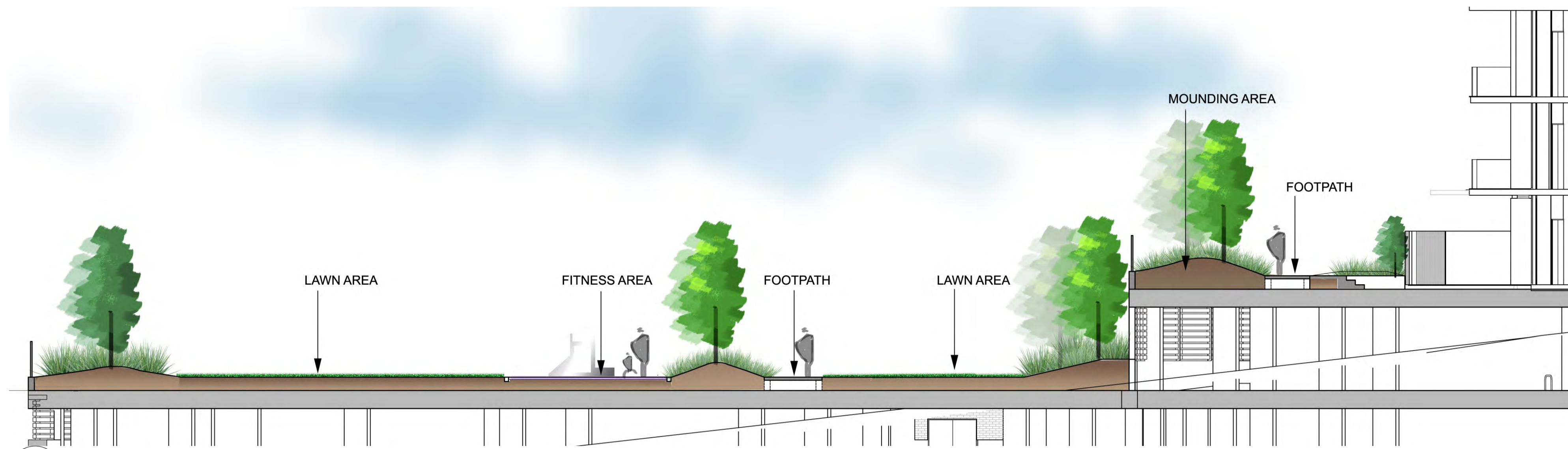
3 SELECTION OF IMAGES FROM INDICATIVE PLANT SCHEDULE



client: MERITON APARTMENTS  
**EPPING PARK STAGE 3  
BUILDING 17  
LANDSCAPE PLAN**

**STURT ASSOCIATES**  
landscape architecture, urban design & environmental design  
SUITE 91, 330 WATTLE STREET  
ULTIMO NSW 2007  
PH (02) 9211 3744 FX (02) 9211 9449

DATE: 25 MAR 2013  
DRAWING: DA-1122-02 REV C  
SCALE: 1:250 @ A1



client: MERITON APARTMENTS  
**EPPING PARK**  
 STAGE 3  
 SECTIONS & TYPICAL UNITS

**STURT ASSOCIATES**  
 landscape architecture, urban design & environmental design  
 SUITE 91, 330 WATTLE STREET  
 ULTIMO NSW 2007  
 PH: (02) 9211 3744 FX: (02) 9211 9449

DATE: 14 MAR 2013  
 DRAWING: DA-1122-03 REV B  
 SCALE: As shown @ A1



INDICATIVE PLANT SCHEDULE (BASIN ZONE)

SPECIES	COMMON NAME	SIZE
<b>ENDEMIC TREES</b>		
<i>Angophora floribunda</i>	Rough-barked Apple	25 litre
<i>Corymbia gummifera</i>	Red Bloodwood	25 litre
<i>Elaeocarpus reticulatus</i>	Blueberry Ash	25 litre
<i>Eucalyptus paniculata</i>	Grey Ironbark	25 litre
<i>Eucalyptus saligna</i>	Sydney Blue Gum	25 litre
<i>Syncarpia glomulifera</i>	Turpentine	25 litre
<b>MASS PLANTING* - REVEGETATION - 5 per m<sup>2</sup></b>		
<i>Acacia longifolia</i>	Sallow wattle	tube
<i>Acacia stricta</i>	Straight wattle	tube
<i>Adiantum aethiopicum</i>	Maidenhair fern	tube
<i>Austrodanthonia racemosa</i>	Wallaby grass	virotube
<i>Billardiera scandens</i>	Apple dumpling	tube
<i>Bursaria spinosa</i>	Blackthorn	tube
<i>Carex breviculmis</i>	Short-stem sedge	virotube
<i>Clematis aristata</i>	Old mans beard	tube
<i>Cyperus gracilis</i>	Slender flat-sedge	virotube
<i>Daviesia ulicifolia</i>	Gorse bitter pea	tube
<i>Dianella caerulea</i>	Blue flax lily	virotube
<i>Dianella longifolia</i>	Flax lily	virotube
<i>Dichelachne micrantha</i>	Shorthair plumegrass	virotube
<i>Dichondra repens</i>	kidney weed	tube
<i>Dodonaea triquetra</i>	hop bush	tube
<i>Einadia nutans</i>	Climbing Saltbush	tube
<i>Entolasia marginata</i>	Wirry panic	virotube
<i>Eragrostis leptostachya</i>	Paddock lovegrass	virotube
<i>Goodenia hederacea</i>	Forest goodenia	tube

SPECIES	COMMON NAME	SIZE
<i>Hardenbergia violacea</i>	Native sarsparilla	tube
<i>Imperata cylindrica</i>	Blady grass	virotube
<i>Indigofera australis</i>	Australian indigo	tube
<i>Kennedia rubicunda</i>	Dusky coral pea	tube
<i>Leucopogon juniperinus</i>	juniper leaved Leucopogon	tube
<i>Lomandra longifolia</i>	Spiny-headed mat-rush	virotube
<i>Mentha saturoides</i>	Creeping mint	tube
<i>Microlaena stipoides</i>	Weeping grass	virotube
<i>Opilismenus aemulus</i>	Basket grass	virotube
<i>Pandorea pandorana</i>	Wonga wonga vine	tube
<i>Pomadouris lanigera</i>	Woolly pomadouris	tube
<i>Pratia purpurascens</i>	Whiteroot	tube
<i>Rapanea variabilis</i>	Mutton wood	tube
<i>Themeda australis</i>	Kangaroo grass	virotube
<i>Viola hederacea</i>	Native violet	tube
<i>Wahlenbergia gracilis</i>	Native bluebell	tube
<i>Zieria smithii</i>	Sandfly zieria	tube
<b>SEDGE &amp; GRASS MIX - 10 per m<sup>2</sup></b>		
<i>Carex appressa</i>	Tall sedge	virotube
<i>Carex maculata</i>	Sedge	virotube
<i>Dianella caerulea</i>	Blue flax lily	virotube
<i>Dianella longifolia</i>	Flax lily	virotube
<i>Juncus usitatus</i>	Common rush	virotube
<i>Lepidosperma laterale</i>	Sword-sedge	virotube
<i>Lomandra longifolia</i>	Spiny-headed mat-rush	virotube

\* Mass planting - revegetation mix, plant endemic species adjacent to bushland regeneration areas

LEGEND

- PROPOSED TREES
- PROPOSED HEDGE PLANTING
- LAWN AREA
- PROPOSED SHRUBS & GROUNDCOVERS
- PATH & PAVING  
REFER TO ARCHITECTS DETAILS
- UNIT PAVING TO COURTYARDS  
REFER TO ARCHITECTS DWG
- BASIN ZONE**
- TURF TO BASE OF BASIN
- SEDGES & GRASSES TO MARGIN & BATTERS  
REFER TO INDICATIVE PLANT SCHEDULE (BASIN ZONE)
- MASS PLANTING TO BASIN SURROUND  
REFER TO INDICATIVE PLANT SCHEDULE (BASIN ZONE)

0 1 3 5 10 20m

client: MERITON APARTMENTS

**EPPING PARK**

**LANDSCAPE MASTER PLAN**

**STURT ASSOCIATES**  
SUITE 01, 320 VENTURE STREET  
MURDOOH NSW 2007  
T: (02) 9211 9744 F: (02) 9211 9449  
E: enquiries@sturtassociates.com.au

DATE: 25 MAR 2013  
DRAWING: MA-1019-01 REV D  
SCALE 1:500 @ A0