



AT&L

ABN 96 130 882 405
Suite 7.02, 6A Glen Street
Milsons Point NSW 2061
info@atl.net.au
www.atl.net.au

6 June 2012

Meriton

Level 11, Meriton Tower
528 Kent Street
2000 Sydney NSW
Australia

Your Ref:

Our Ref: 10-26-5001-02

Direct phone: 8920 2466

Attention Benjy Levy

Dear Benjy

Mobbs Lane – Sediment Control

We, AT&L, being Civil Engineers within the meaning of the Building Code of Australia, are responsible for the design of the Civil Engineering works relating to the Mobbs Lane Development. We certify that the work as represented by our civil drawings have been designed in accordance with the relevant codes of Standards Australia, Council Guidelines, DA Conditions and in accordance with accepted engineering practice.

As such the implementation of the Sediment Controls as documented on SKC30, & C092 when implemented in conjunction with Meritons Building Controls documented on E-515-CON will satisfy the requirements of Soils and Construction "Blue Book". Minor changes to the proposed sediment controls may be accepted provided they still meet the design intent.

This certificate shall not be constructed as relieving any other party of their responsibilities.

The Contractor is responsible for maintaining the sediment controls and notifying the relevant parties of any changes to construction program which may affect their performance.

Should there be any questions regarding the above please contact Michael Guinane on 0407 938 093

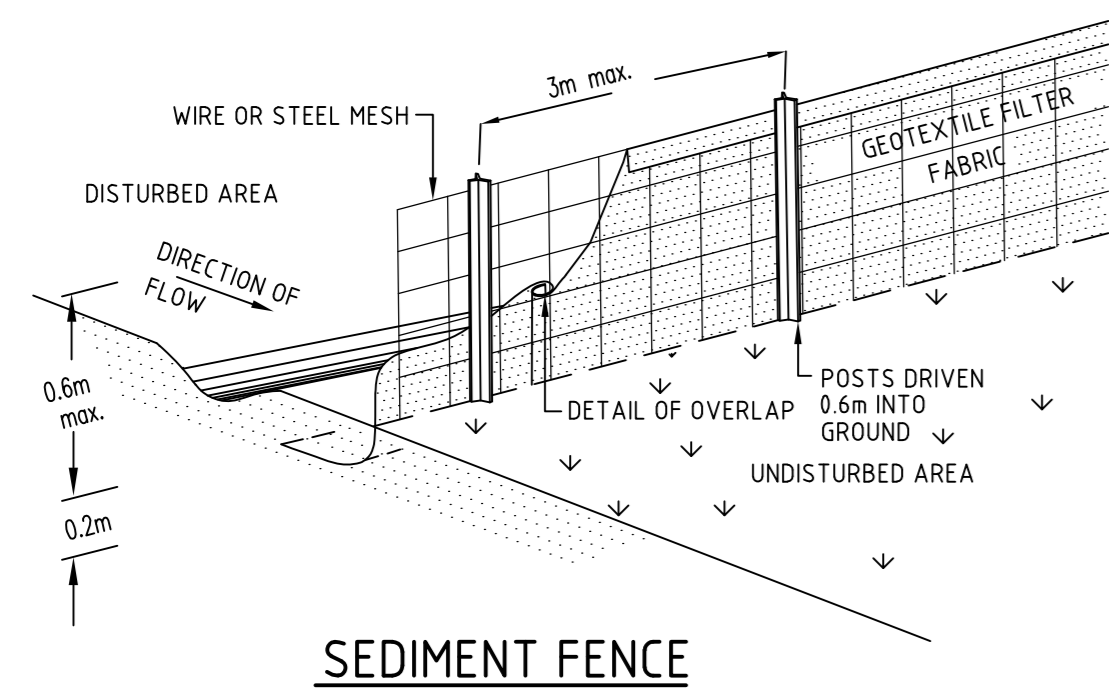
Yours sincerely

A handwritten signature in black ink, appearing to read "Michael Guinane".

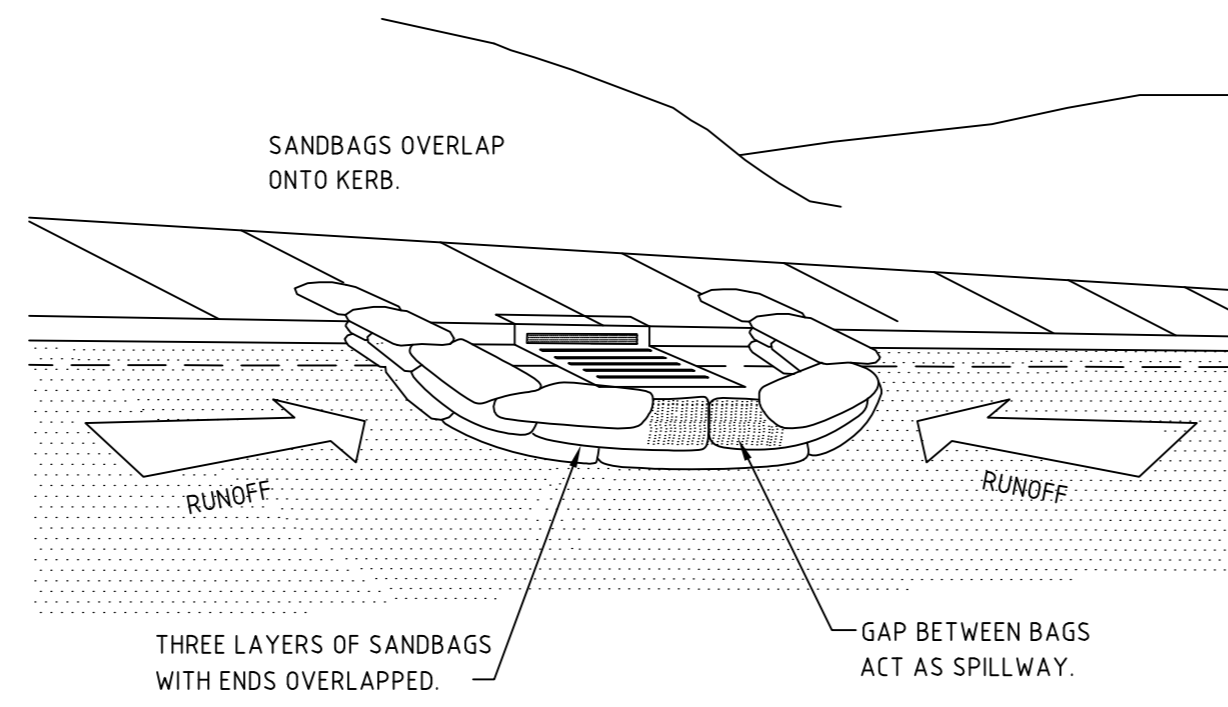
Michael Guinane

Associate
Senior Engineer

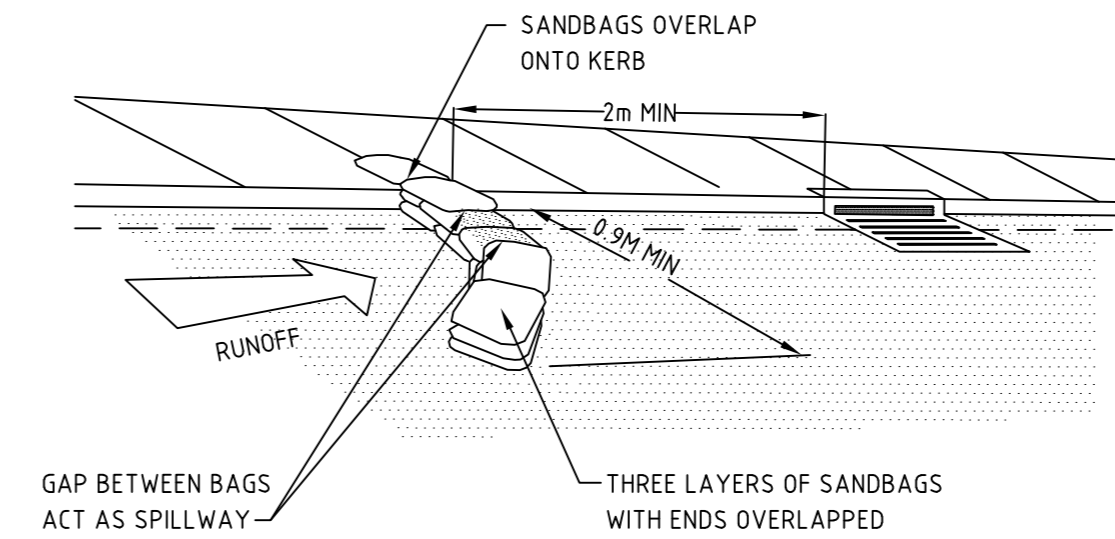
A T & L



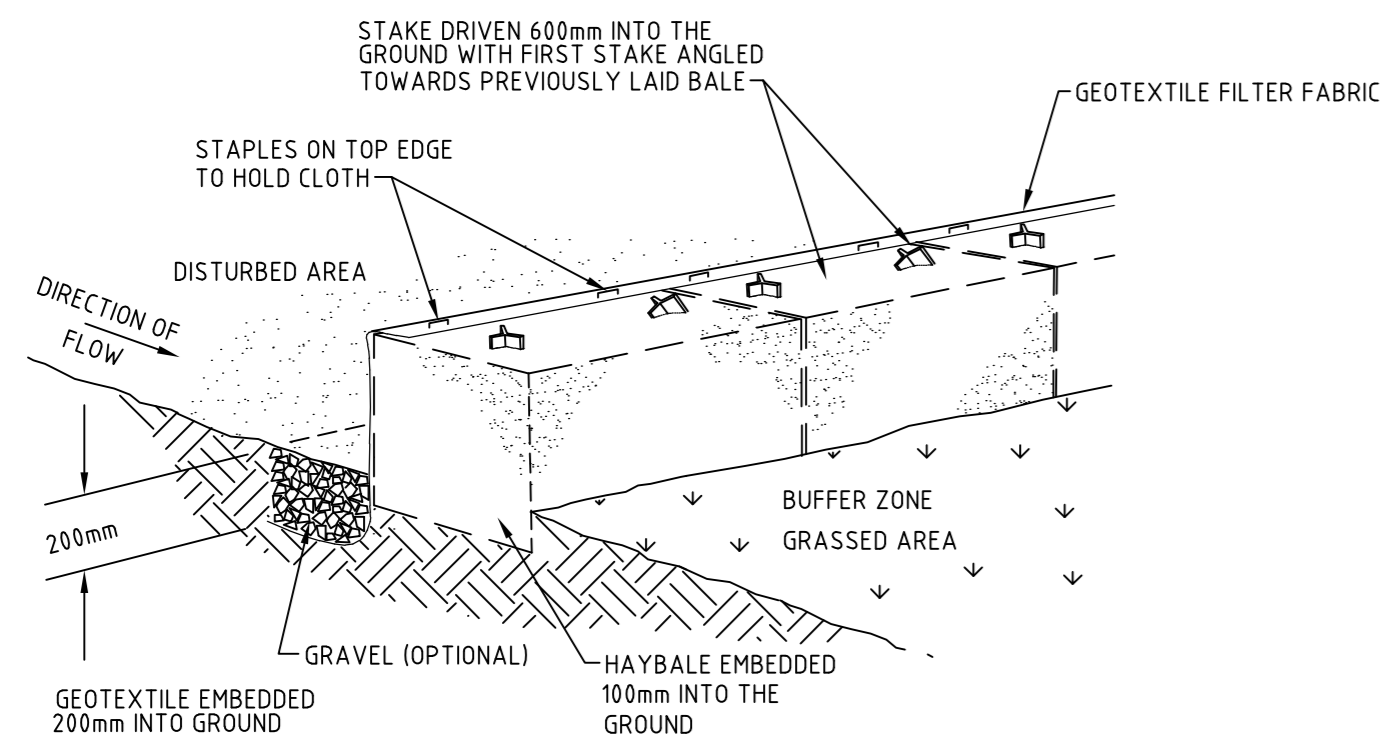
SEDIMENT FENCE



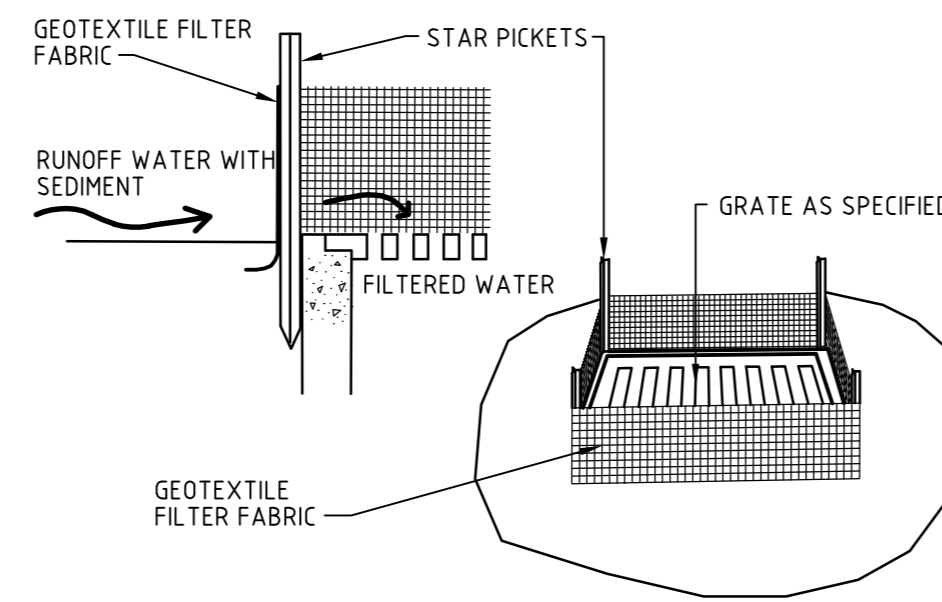
SANDBAG SEDIMENT TRAP FOR KERB INLET AT LOWPOINT
NTS



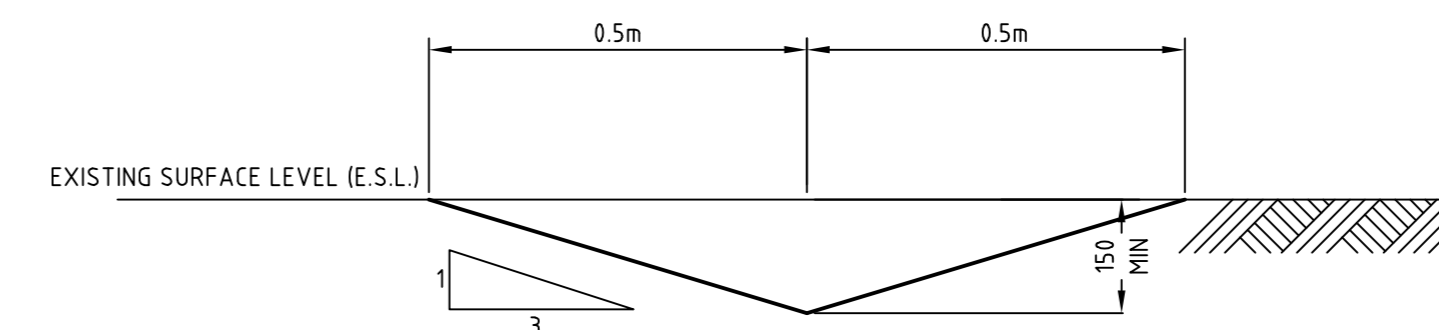
SANDBAG SEDIMENT TRAP FOR KERB INLET ON GRADE
NTS



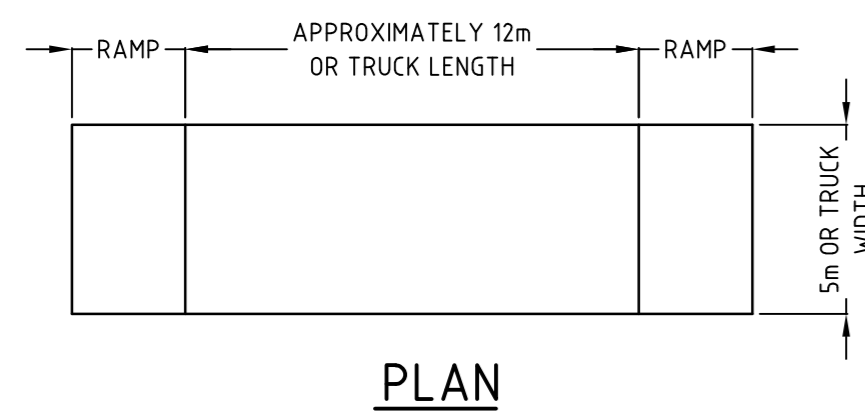
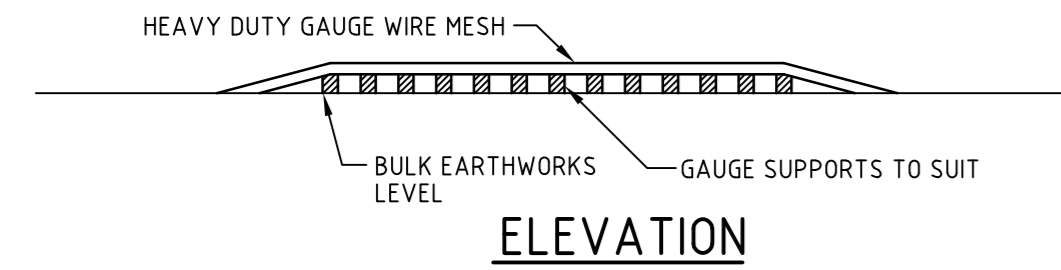
HAYBALE AND GEOTEXTILE SEDIMENT FILTER



GEOTEXTILE FILTER PIT SURROUND
NTS



TEMPORARY CATCH DRAIN
(MIN FALL 1%)
SCALE 1:10



TEMPORARY CONSTRUCTION EXIT (WASH DOWN DETAIL)
SCALE 1:200

THE EXIT SHALL BE MAINTAINED IN A CONDITION WHICH PREVENTS TRACKING OR FLOWING OF SEDIMENT ONTO PUBLIC RIGHTS OF WAY. THIS MAY REQUIRE REPAIR AND OR CLEANOUT OF ANY MEASURES USED TO TRAP SEDIMENT. ALL SEDIMENT SPILLED, DROPPED, WASHED OR TRACKED ONTO PUBLIC RIGHTS OF WAY MUST BE REMOVED IMMEDIATELY.

1	ISSUE FOR CONSTRUCTION	27/05/11
Issue	Description	Date

Key Plan		
Status		
CONSTRUCTION		A1

Scale	1 : 500	Drawn TS	
		Designed AMc	
Height Datum	AHD	Checked AMc	
Grid		Approved	

File: C092 SED & EROSION CONTROL DETAILS.dwg

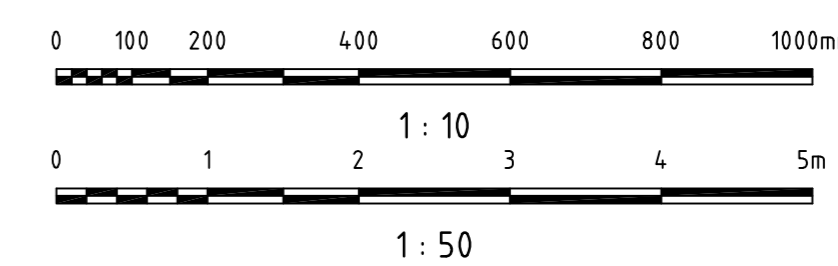
Client
MERITON APARTMENTS PTY LTD

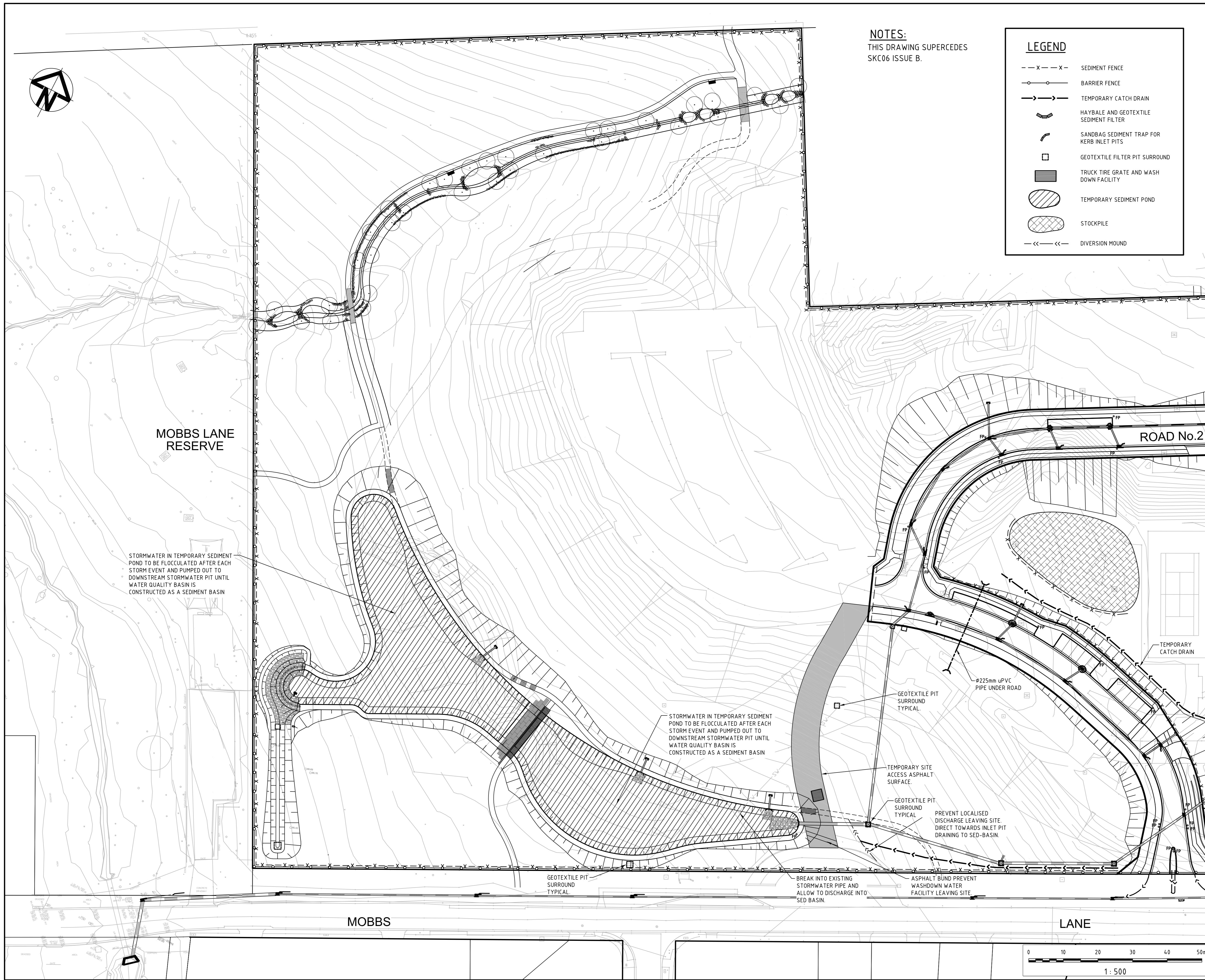
Civil Engineers and Project Managers
AT&L
Suite 702, 6A Glen Street
Milsions Point NSW 2061
ABN 96 130 882 405
Tel: 02 8920 2466
Fax: 02 9922 5102
www.atl.net.au
info@atl.net.au

Project
**EPPING PARK
61 MOBBS LANE
EPPING**

Title
**INTERNAL WORKS
SEDIMENTATION & EROSION
CONTROL DETAILS**

Drawing No. C092	Project No. 10-26	Issue 1
----------------------------	-----------------------------	-------------------





NOTES:
THIS DRAWING SUPERCEDES
SKC06 ISSUE B.

LEGEND	
---x---x---	SEDIMENT FENCE
—○—○—	BARRIER FENCE
—>—>—	TEMPORARY CATCH DRAIN
—(—(—	HAYBALE AND GEOTEXTILE SEDIMENT FILTER
—(—(—	SANDBAG SEDIMENT TRAP FOR KERB INLET PITS
□	GEOTEXTILE FILTER PIT SURROUND
▨	TRUCK TIRE GRATE AND WASH DOWN FACILITY
▨	TEMPORARY SEDIMENT POND
▨	STOCKPILE
—<<—<<—	DIVERSION MOUND

MOBBS LANE RESERVE

ROAD No.2

STORMWATER IN TEMPORARY SEDIMENT POND TO BE FLOCCULATED AFTER EACH STORM EVENT AND PUMPED OUT TO DOWNSTREAM STORMWATER PIT UNTIL WATER QUALITY BASIN IS CONSTRUCTED AS A SEDIMENT BASIN

STORMWATER IN TEMPORARY SEDIMENT POND TO BE FLOCCULATED AFTER EACH STORM EVENT AND PUMPED OUT TO DOWNSTREAM STORMWATER PIT UNTIL WATER QUALITY BASIN IS CONSTRUCTED AS A SEDIMENT BASIN

Ø225mm uPVC PIPE UNDER ROAD

TEMPORARY SITE ACCESS ASPHALT SURFACE.

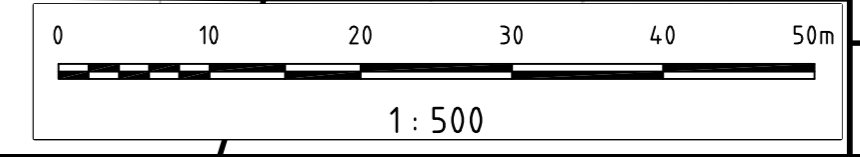
PREVENT LOCALISED DISCHARGE LEAVING SITE. DIRECT TOWARDS INLET PIT DRAINING TO SED-BASIN.


BREAK INTO EXISTING STORMWATER PIPE AND ALLOW TO DISCHARGE INTO SED BASIN.

ASPHALT BUND PREVENT WASHDOWN WATER FACILITY LEAVING SITE.

MOBBS

LANE



P1	ISSUE FOR INFORMATION	09/02/12
Issue	Description	Date
Key Plan		
Status	CONSTRUCTION	A1
Scales	1 : 500	Drawn TS
		Designed AMc
Height Datum	AHD	Checked AMc
Grid		Approved
File:	SKC30 SED & EROSION CONTROL PLAN.dwg	
Client	MERITON APARTMENTS PTY LTD	
Civil Engineers and Project Managers	 Suite 702, 6A Glen Street Milsons Point NSW 2061 ABN 96 130 882 405 Tel: 02 8920 2466 Fax: 02 9922 5102 www.atl.net.au info@atl.net.au	
Project	EPPING PARK 61 MOBBS LANE EPPING	
Title	INTERNAL WORKS SEDIMENTATION & EROSION CONTROL STAGING PLAN	
Drawing No.	Project No.	Issue
SKC30	10-26	P1