

1 ELEVATION - Typical Shopfront  
1:50 @ A1

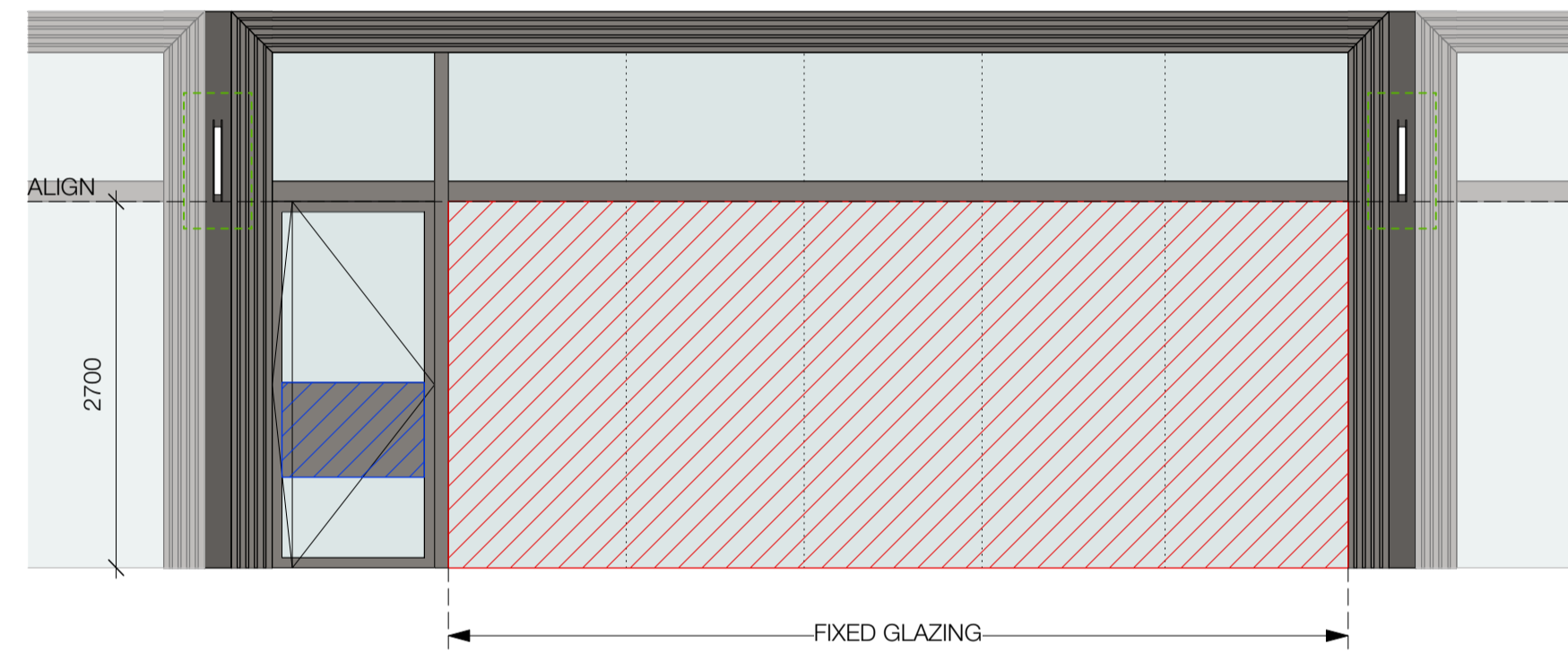
VINYL DECAL SIGNAGE ZONE  
Clear glazing may have retailers branding applied to the internal side of glass to a maximum of 2sqm per tenancy.

PIVOT ENTRY DOOR SIGNAGE  
Signage applied to or cut out of the two metal panels on either side of the glazing.  
- Metal plates are powdercoated to match door frame.  
- Non illuminated  
- Static

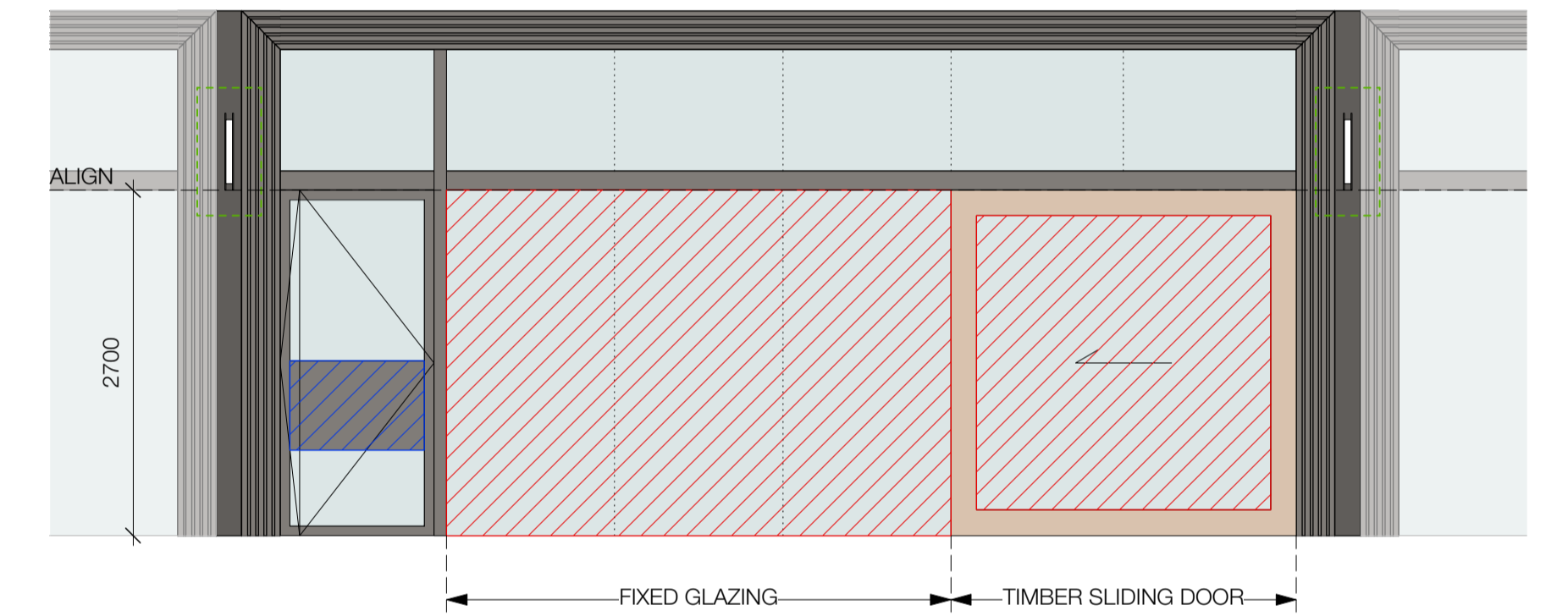
BLADE SIGNAGE  
Blade signage positioned perpendicular from the facade positioned on the centre of the column. Refer to plan below for all possible locations. Retailer to selected preferred locations based on this plan.  
- Retailer signage laser cut onto two square aluminium plates on either side of sign.  
- Aluminium plates powdercoated to match door frames adjacent  
- Illuminated or not illuminated  
- Static  
- Maximum size = 600mm (w) x 600mm (l) x 150mm (d)  
- Bottom edge of sign to align to shopfront transom - 2700mm from ground.



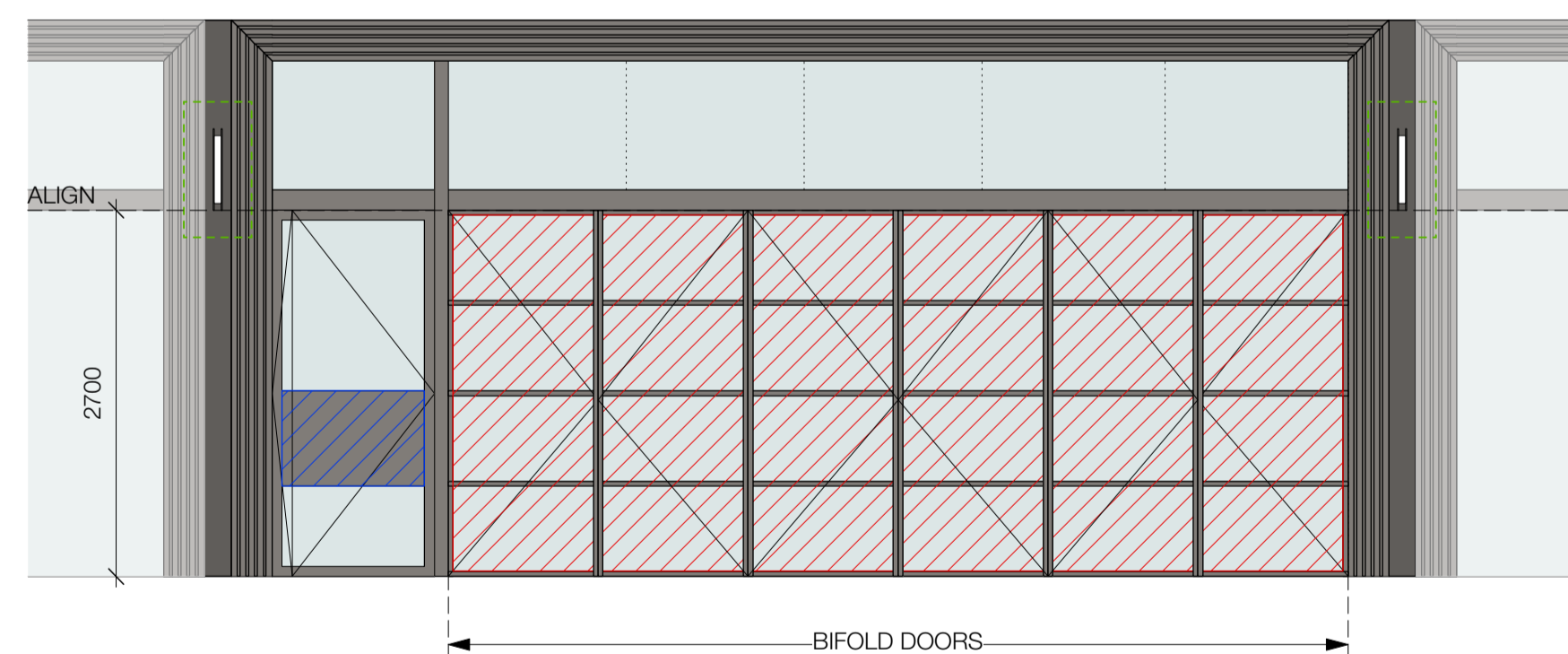
6 PLAN - Blade Signage Locations  
1:500 @ A1



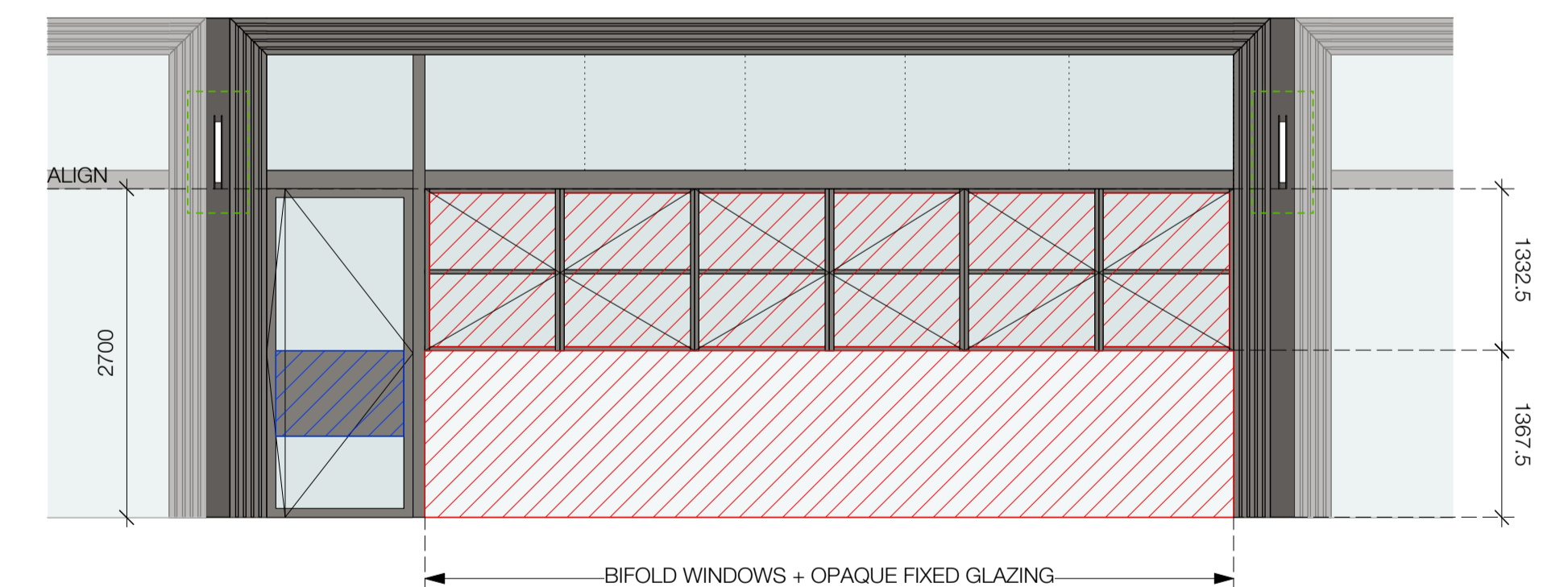
2 ELEVATION - Shopfront Option 1 - FIXED GLASS  
1:50 @ A1



3 ELEVATION - Shopfront Option 2 - TIMBER SLIDING DOOR  
1:50 @ A1



4 ELEVATION - Shopfront Option 3 - BIFOLD DOORS  
1:50 @ A1



5 ELEVATION - Shopfront Option 4 - BIFOLD WINDOWS + OPAQUE FIXED GLAZING  
1:50 @ A1

NOT FOR CONSTRUCTION

DRAWING PREPARED FOR:  
LEND LEASE

BY:  
TONY CARO ARCHITECTURE PTY LTD  
LEVEL 1, 2 GLEN ST MILSONS POINT  
NSW 2061 SYDNEY AUSTRALIA  
T 99649100 F 99649133  
WWW.TONYCAROARCHITECTURE.COM.AU

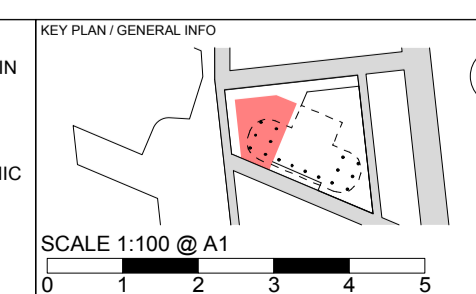
ISSUE REGISTER		
No	Date	Note
2	3/10/15	ISSUED FOR STW
1	2/10/15	ISSUED FOR STW

REVISION REGISTER		
TC	By	Date
TC	B	3/10/15
TC	A	2/10/15

GENERAL NOTES

THESE DRAWINGS ARE DESIGN INTENT DRAWINGS ONLY AND REQUIRE FURTHER COORDINATION WITH CONSULTANTS INCLUDING BUT NOT LIMITED TO BCA CONSULTANT, STRUCTURAL ENGINEER, FACADE ENGINEER AND SERVICE CONSULTANTS. DO NOT SCALE OFF THIS DRAWING. USE FIGURED DIMENSIONS ONLY. RESOLVE ANY DISCREPANCIES BEFORE PROCEEDING. COPYRIGHT OF THIS DRAWING AND THE DESIGNS EXECUTED REMAIN THE PROPERTY OF TONY CARO ARCHITECTURE. ALL ARCHITECTURAL DRAWINGS TO BE READ IN CONJUNCTION WITH OTHER ARCHITECTURAL DETAILS, SCHEDULES AND SPECIFICATIONS.

ALL ARCHITECTURAL DRAWINGS AND DOCUMENTS TO BE READ IN CONJUNCTION WITH OTHER CONSULTANTS DRAWINGS AND SPECIFICATIONS. CAD DOCUMENTS ARE ISSUED FOR INFORMATION ONLY. CHANGES ARE NOT TO BE MADE TO ANY DOCUMENTATION WITHOUT THE ARCHITECT'S WRITTEN APPROVAL. TCA TAKES NO RESPONSIBILITY FOR THE ELECTRONIC TRANSMISSION, DIMENSIONS OR ACCURACY OF THESE DRAWINGS. FOR ALL EXTERNAL LEVELS REFER TO LANDSCAPE ARCHITECT'S DRAWINGS. TCA TO BE ISSUED SHOP DRAWINGS FOR REVIEW.



PROJECT  
T1 PODIUM WEST - FACADE  
BARANGAROO NSW

DRAWING NAME  
SIGNAGE STRATEGY

SCALE	PAGE SIZE	STATUS
-	A1	A
DWG DATE	DRAWN BY	CHECKED BY
10/2/15	RD	TC
ECOT DATE	REVISION	ISSUE
3/10/15	B	2
DRAWING NUMBER		
A_RS_963		