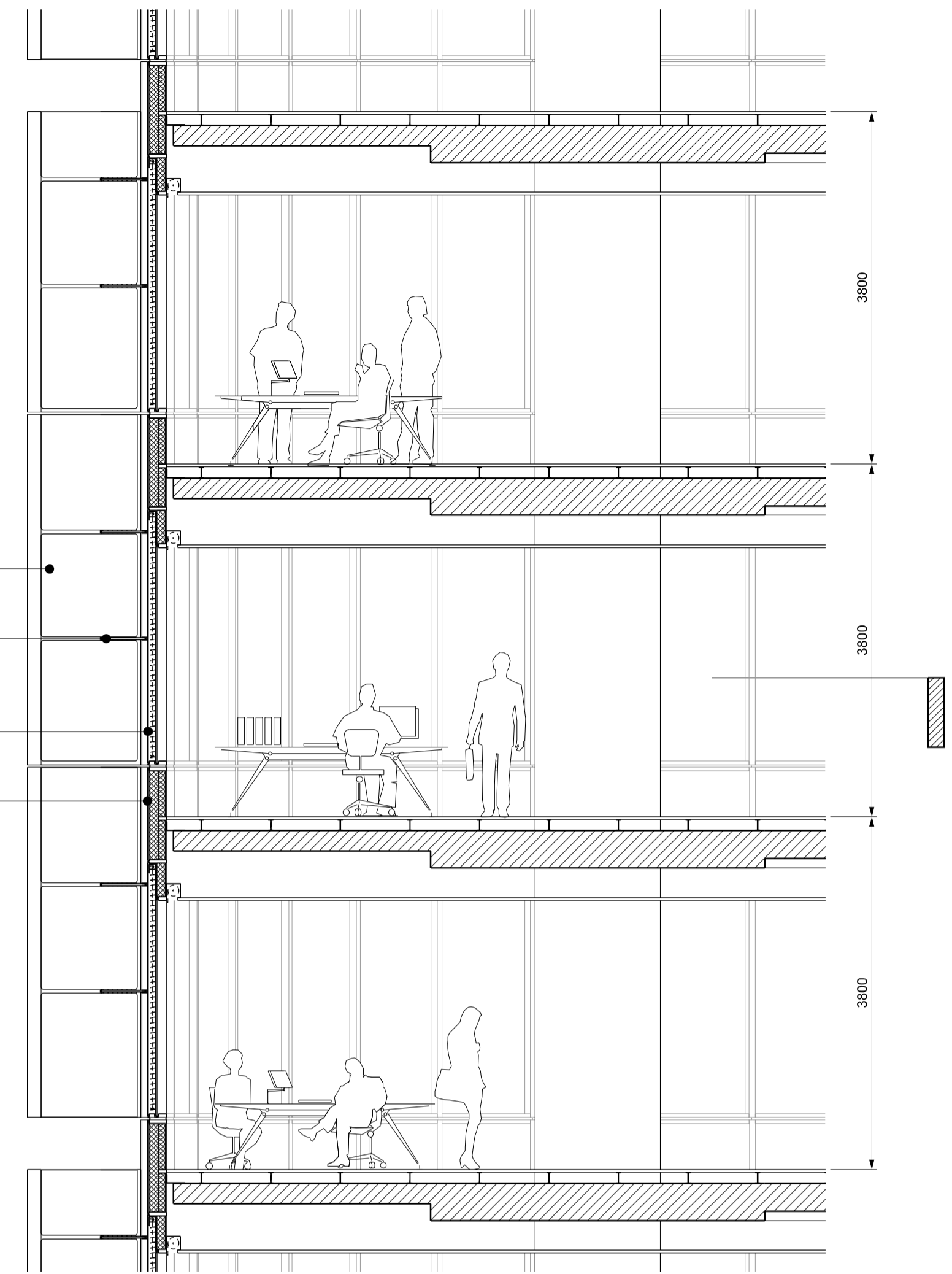
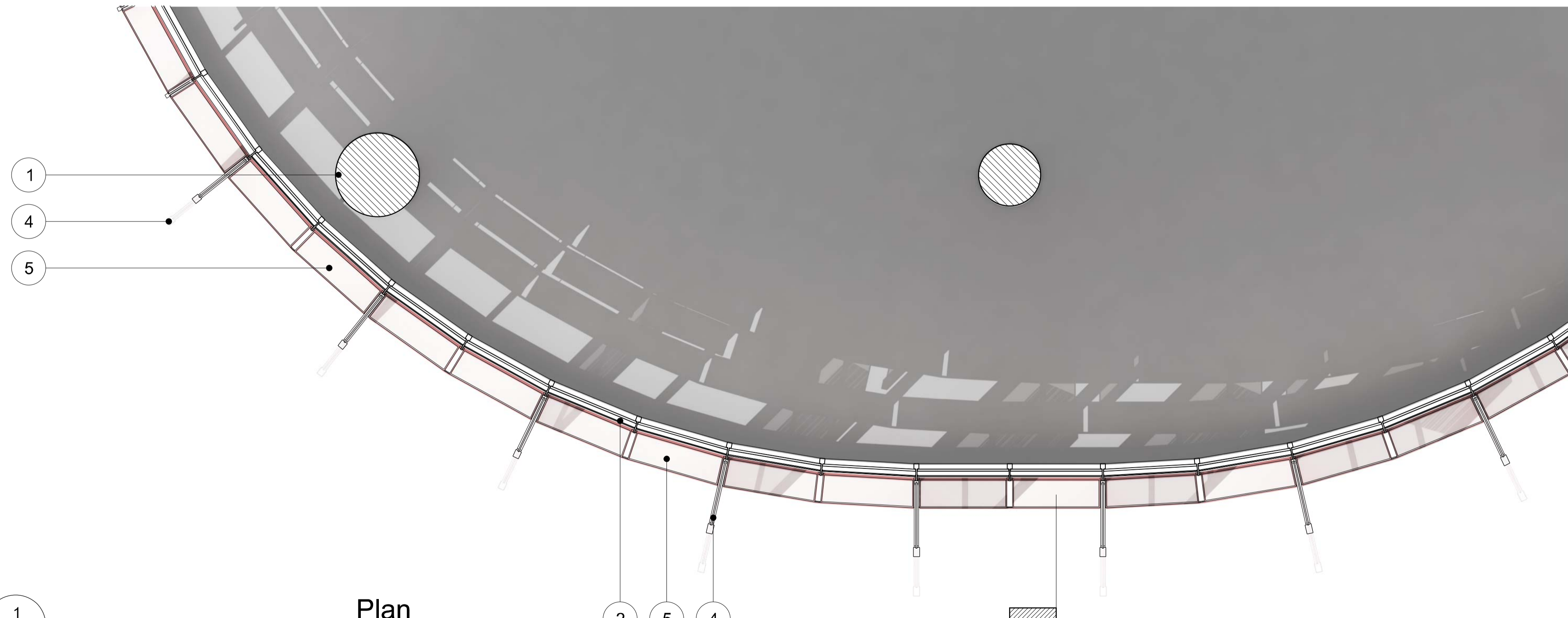


Elevation
1:50



Section
1:50



Plan
1:50

MATERIAL DESCRIPTION

- 1 - **STRUCTURE**
Primary structural concrete frame
- 2 - **EXTERNAL ENVELOPE**
Double glazed unit within aluminium curtainwall system with blind
- 3 - **EXTERNAL ENVELOPE**
Back-painted glass spandrel and upstand panels within aluminium curtainwall system
- 4 - **SOLAR SHADING**
Glazed vertical shading fin within sub-frame supported from curtainwall mullion with translucent and fritted sections to high level and spandrel zones
- 5 - **SOLAR SHADING**
Fixed horizontal louvre supported from curtainwall mullion and vertical fin sub-frame

Revision	Date	Description	Legal	Site Address	Lead Architect	Collaborating Architect	Client	Project	Drawn/Checked by	Drawing Title	Scale @ A1	Drawing Number	
A	21-10-2011	Barangaroo South C3 Project Application MP11_0044	Do not scale from drawing. The author of this drawing takes no responsibility for any dimensions obtained by measuring or scaling from this drawing and no reference may be drawn on such other plans. Any dimension is given, it is the responsibility of the recipient to ascertain the dimension specifically from the author of the measurement. The design of all structural and service elements must always be checked against the relevant code and standards. For reference, see all the relevant specifications mentioned herein on this drawing. © copyright Rogers Stirk Harbour + Partners, all rights reserved 2010	Barangaroo Hickson Rd Millers Point NSW 2000 Sydney, Australia	RSHP Australia Pty Limited Ivan Harbour Principal Architect RAlA NSW ARB 8484 65-69 Kent St Millers Point NSW 2000 Sydney, Australia t: +61 2 9253 5655 f: +61 2 9253 5666 email: J6100@rsh-p.com www.rsh-p.com	Lend Lease design 30 The Bond 30 Hickson Rd Millers Point NSW 2000 Sydney, Australia t: +61 2 9236 6111 f: +61 2 9383 8133 www.bovslendlease.com	30 The Bond 30 Hickson Rd Millers Point NSW 2000 Sydney, Australia t: +61 2 9236 6111 f: +61 2 9383 8133 www.bovslendlease.com	Barangaroo South - C3	JS/YT	Detailed Bay Typical East/West Facade Office Floor	1:50	RSHP-A-C3-6130-E	
B	24-02-2012	Amendments for Preferred Project Report						Project Application: MP11_0044			Drawing Date	Revision Date	Revision
											07-10-2011	24-02-2012	B