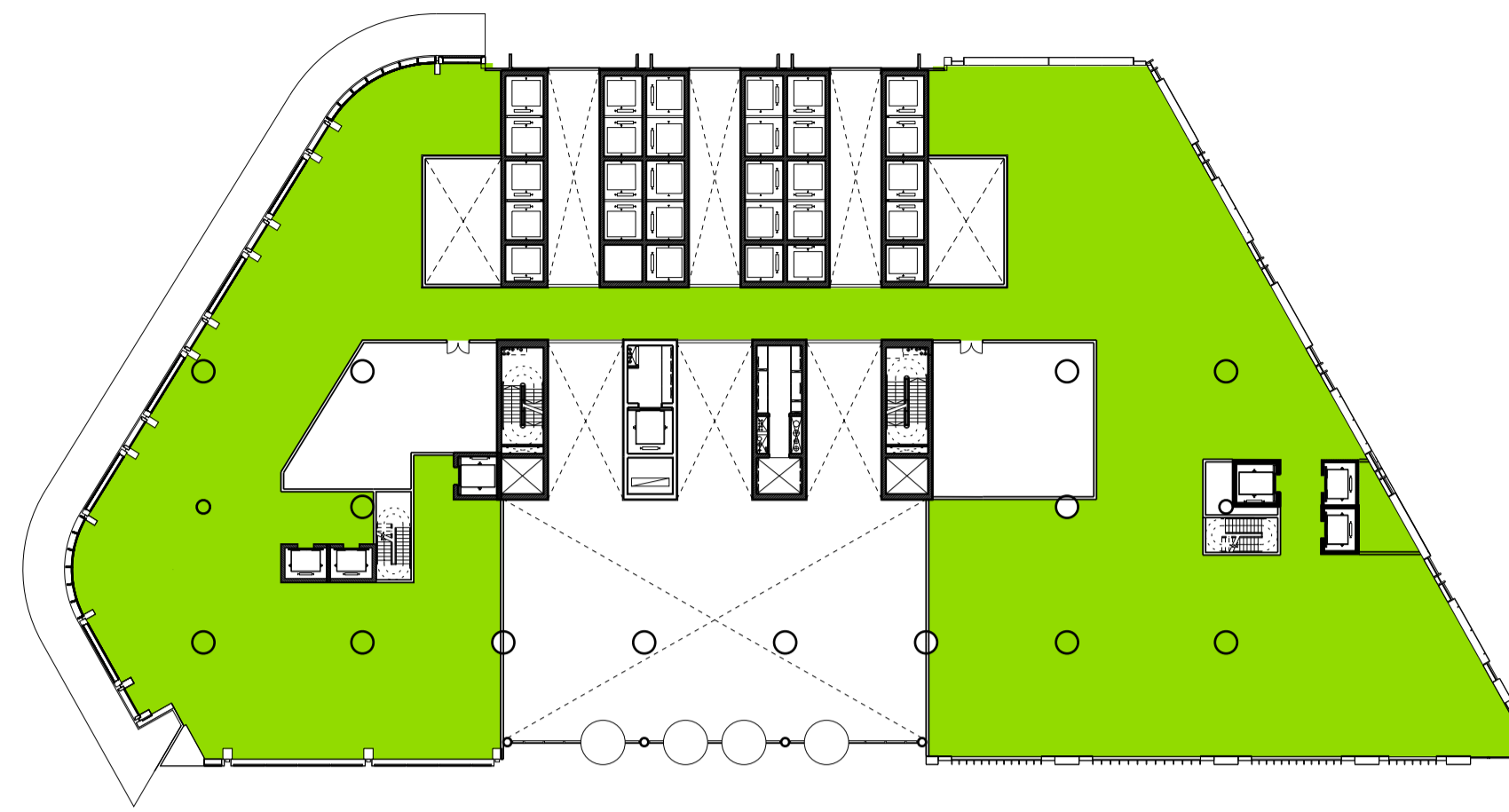


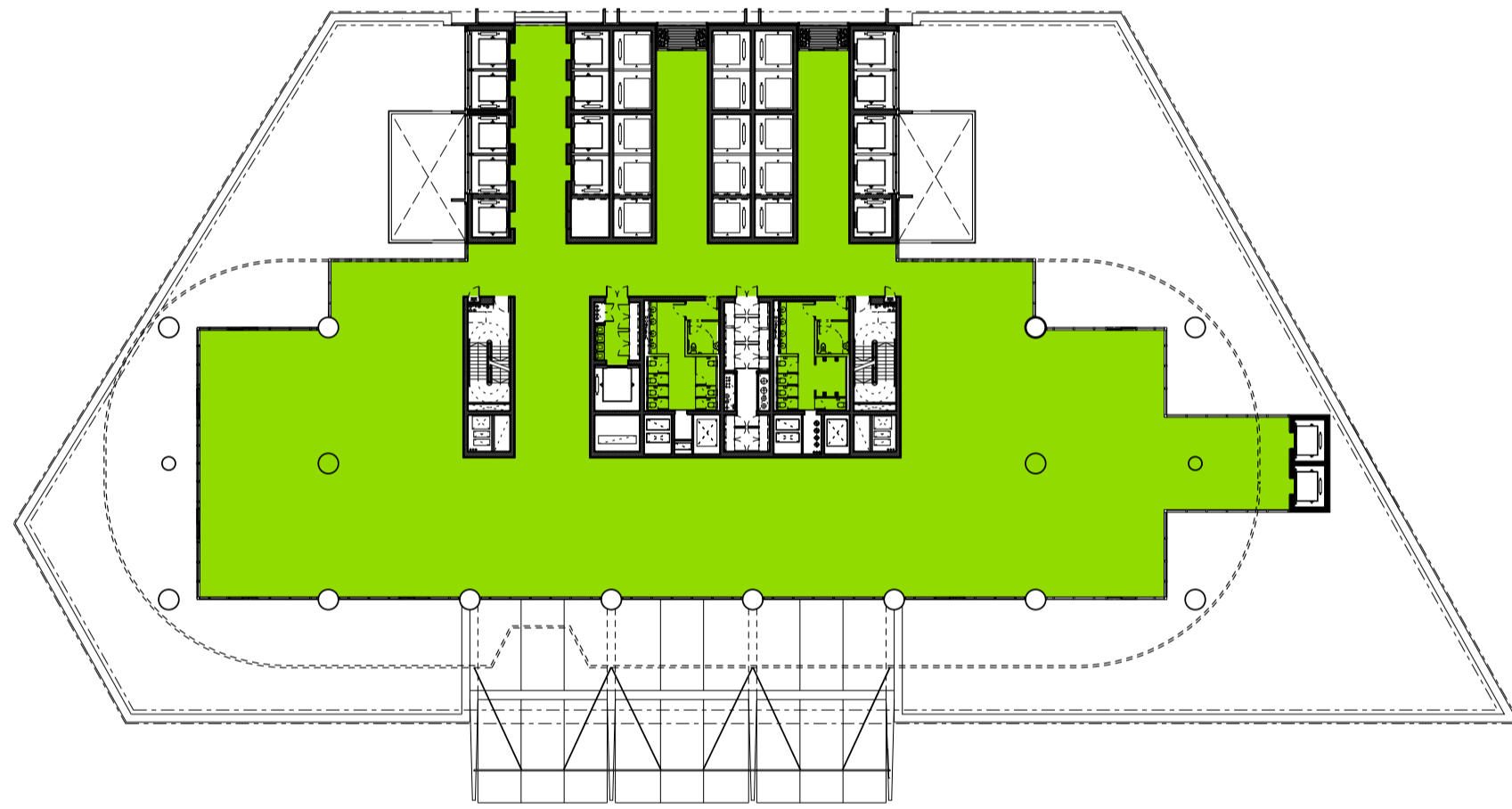
Level 00



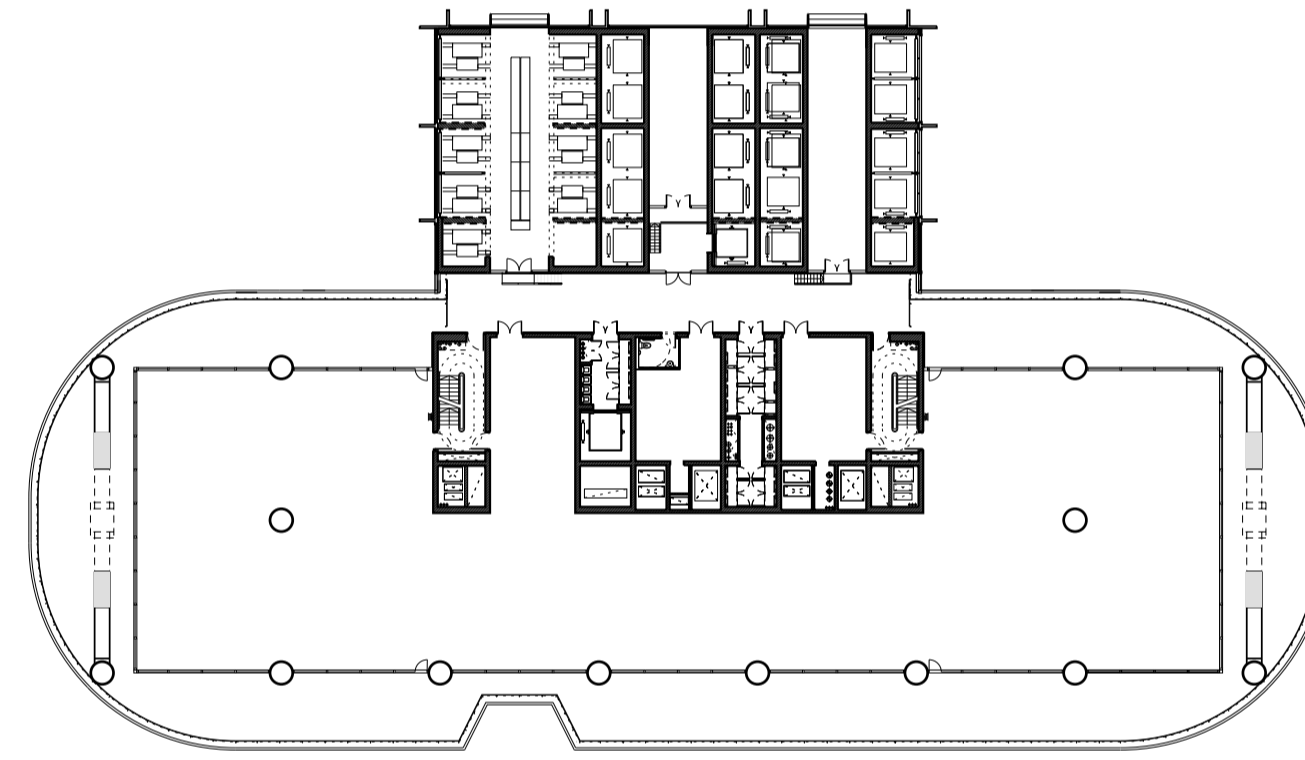
Level 01



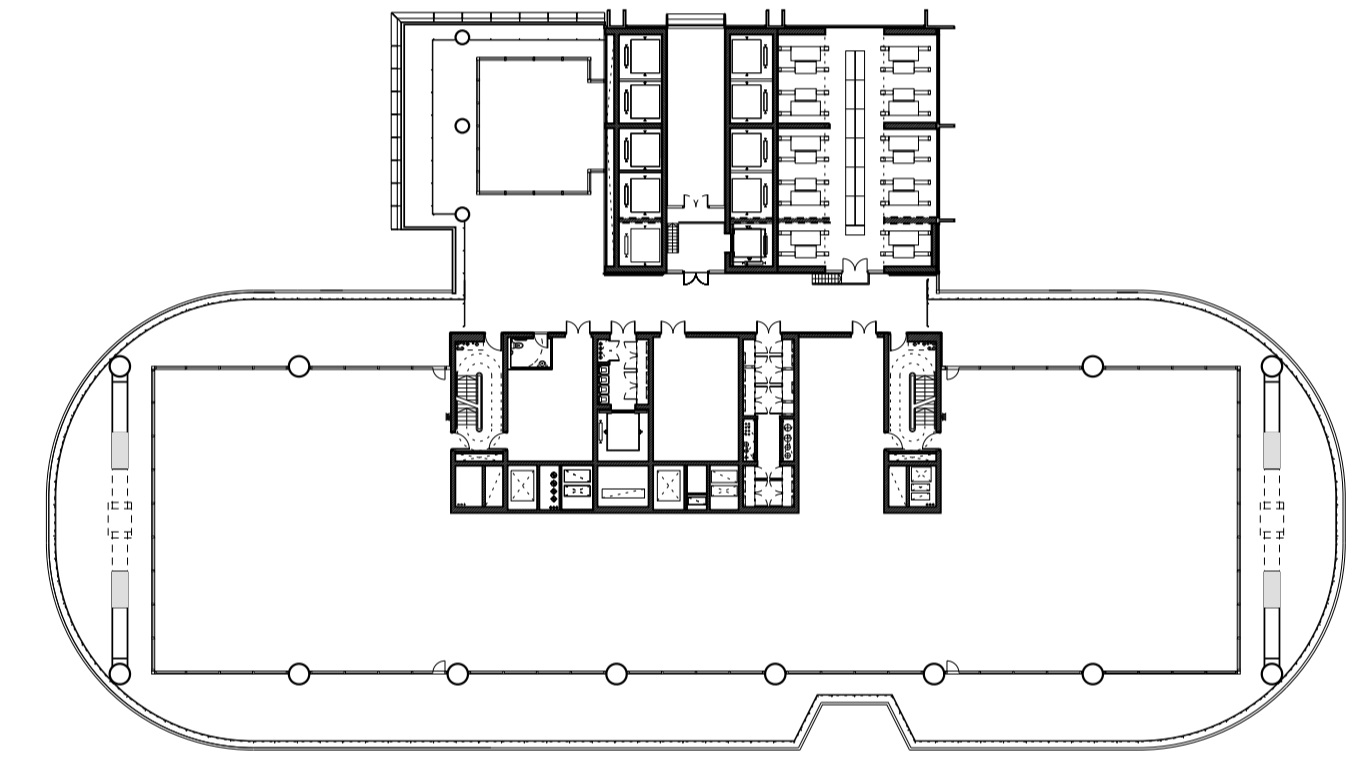
Level 02



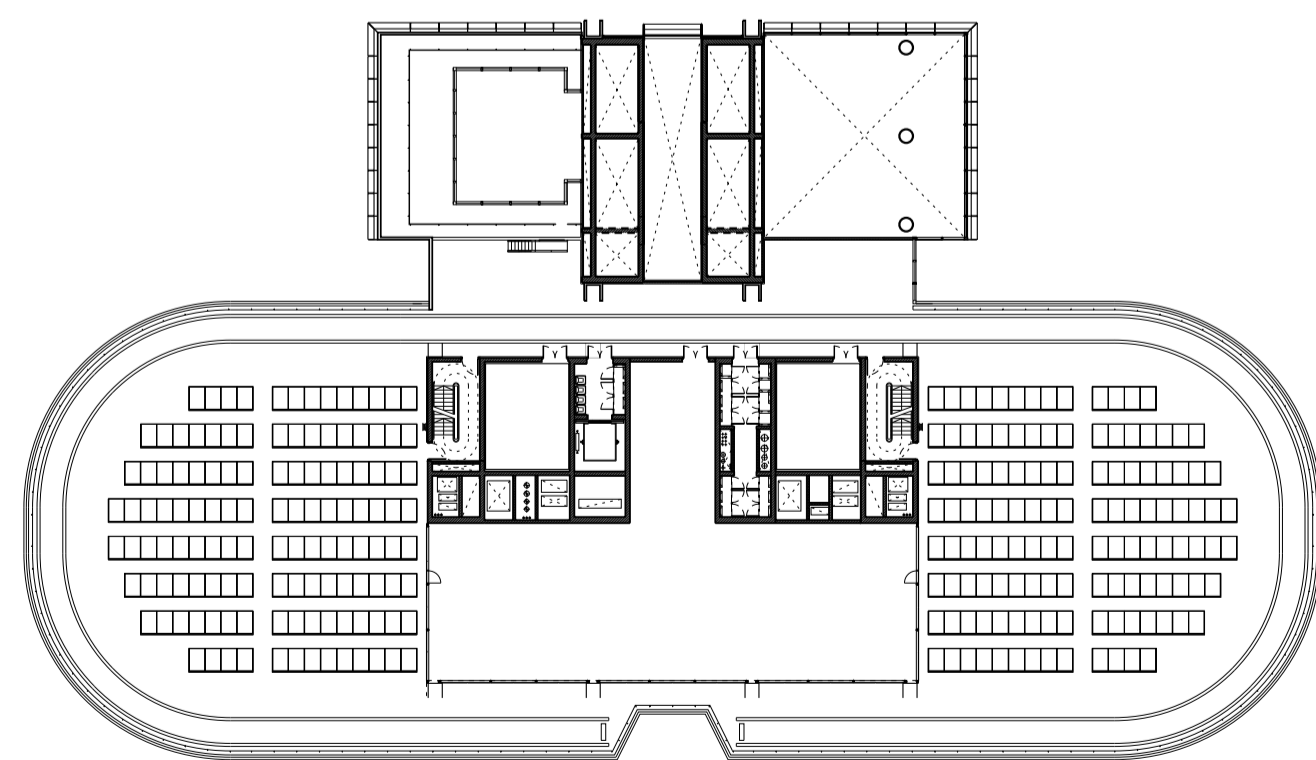
Level 03



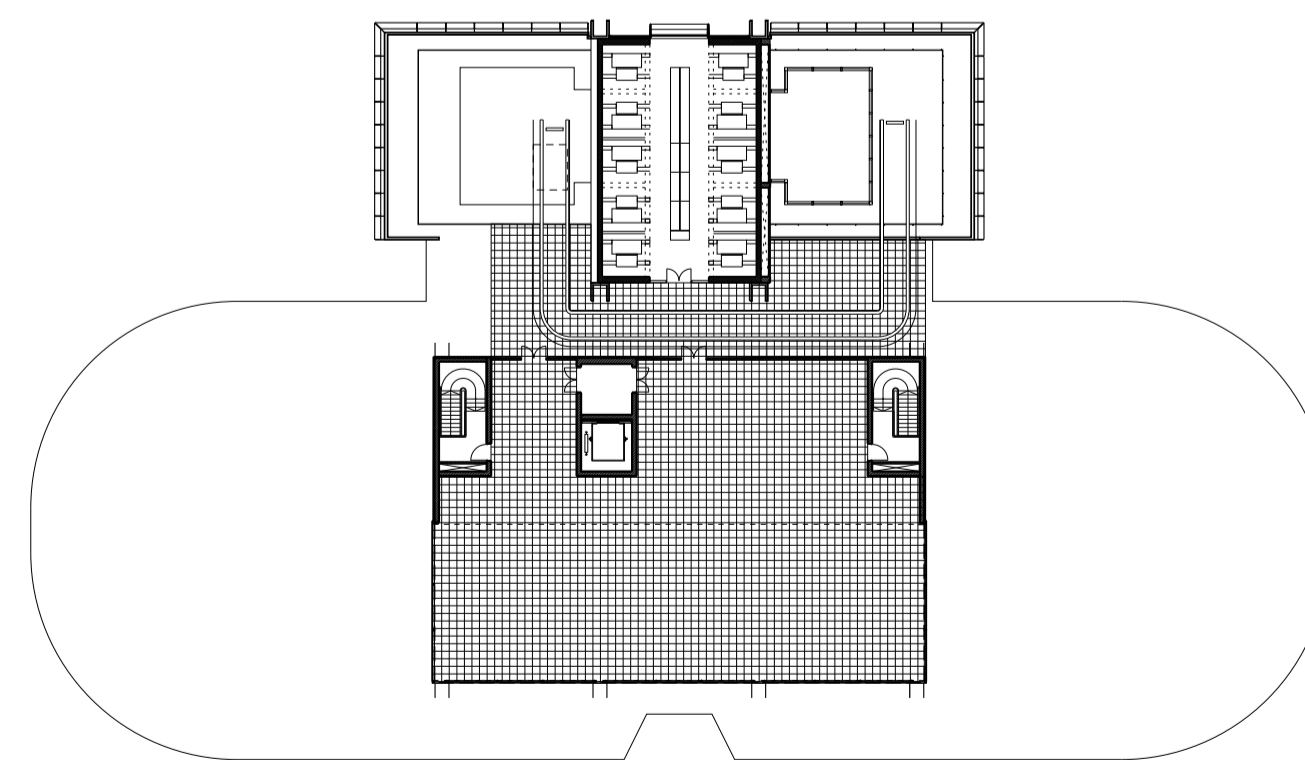
Level 18 - Plant



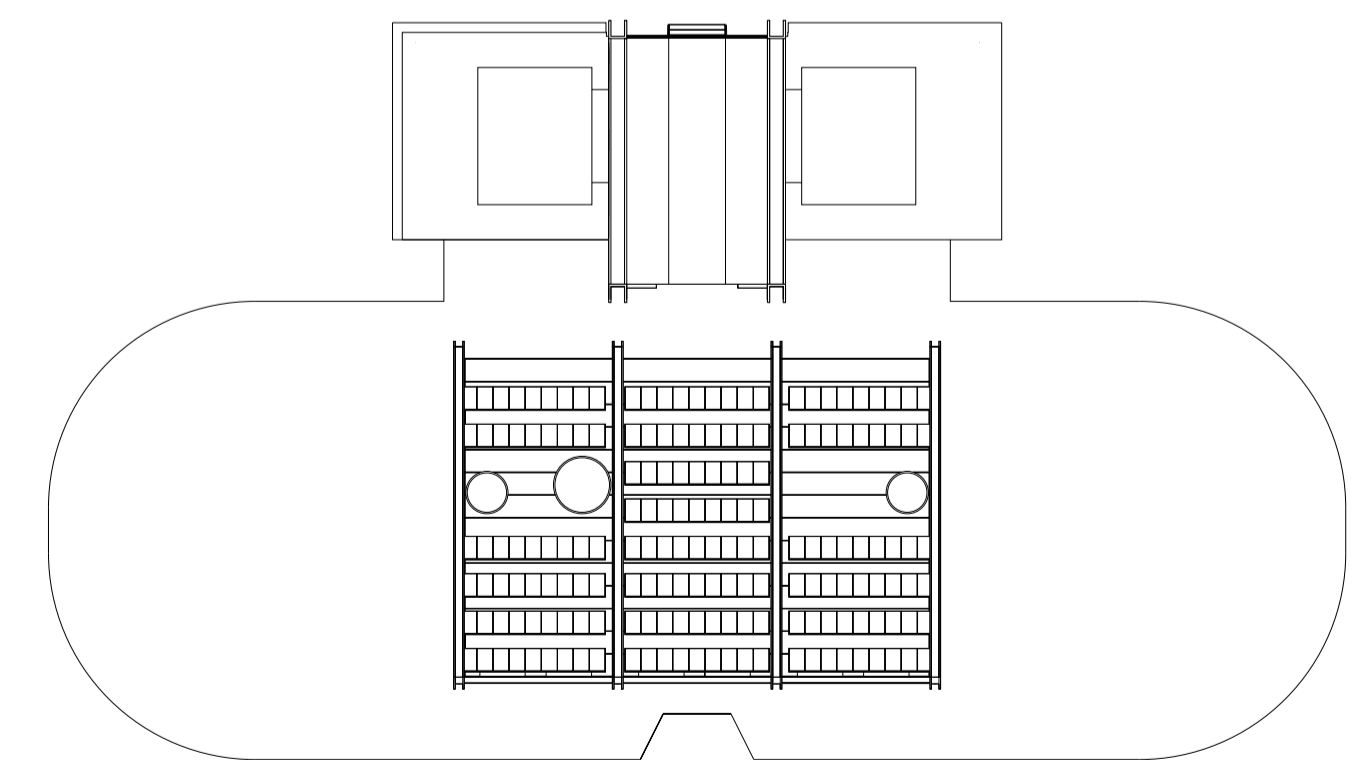
Level 34 - Plant



Level 49 - Plant



Level 50 - Plant



Roof

Revision	Date	Description
A	07-10-2011	Barangaroo South C3 Project Application MP11_0044

**Legal**  
Do not scale from drawing. The author of this drawing takes no responsibility for any dimensions obtained by measuring or scaling from this drawing and no reference may be placed on such dimensions. It is the responsibility of the recipient to ascertain the dimension specifically from the author or by the measurement.  
The drawing of all structural and service elements must always be checked against the relevant engineers drawings. No reference shall be placed upon using information shown on this drawing.  
© copyright Rogers Stirk Harbour + Partners, all rights reserved 2010

**Site Address**  
Barangaroo  
Hickson Rd  
Millers Point NSW 2000  
Sydney, Australia

**Lead Architect**  
**RSHP Australia Pty Limited**  
Ivan Harbour | Principal Architect | RAIA NSW ARB 8484  
65-69 Kent St  
Millers Point  
NSW 2000  
Sydney, Australia  
t: +61 2 9253 5655  
f: +61 2 9253 5666  
email: J6100@rsh-p.com  
www.rsh-p.com

**Collaborating Architect**  
Graeme W. Jones | Principal Architect | FPA NSW ARB 4005  
**Lend Lease design**  
30 The Bond  
30 Hickson Rd  
Millers Point NSW 2000  
Sydney, Australia  
t: +61 2 9236 6111  
f: +61 2 9383 8133  
www.bovislendlease.com

**Client**  
**Lend Lease**  
30 The Bond  
30 Hickson Rd  
Millers Point NSW 2000  
Sydney, Australia  
t: +61 2 9236 6111  
f: +61 2 9383 8133  
www.bovislendlease.com

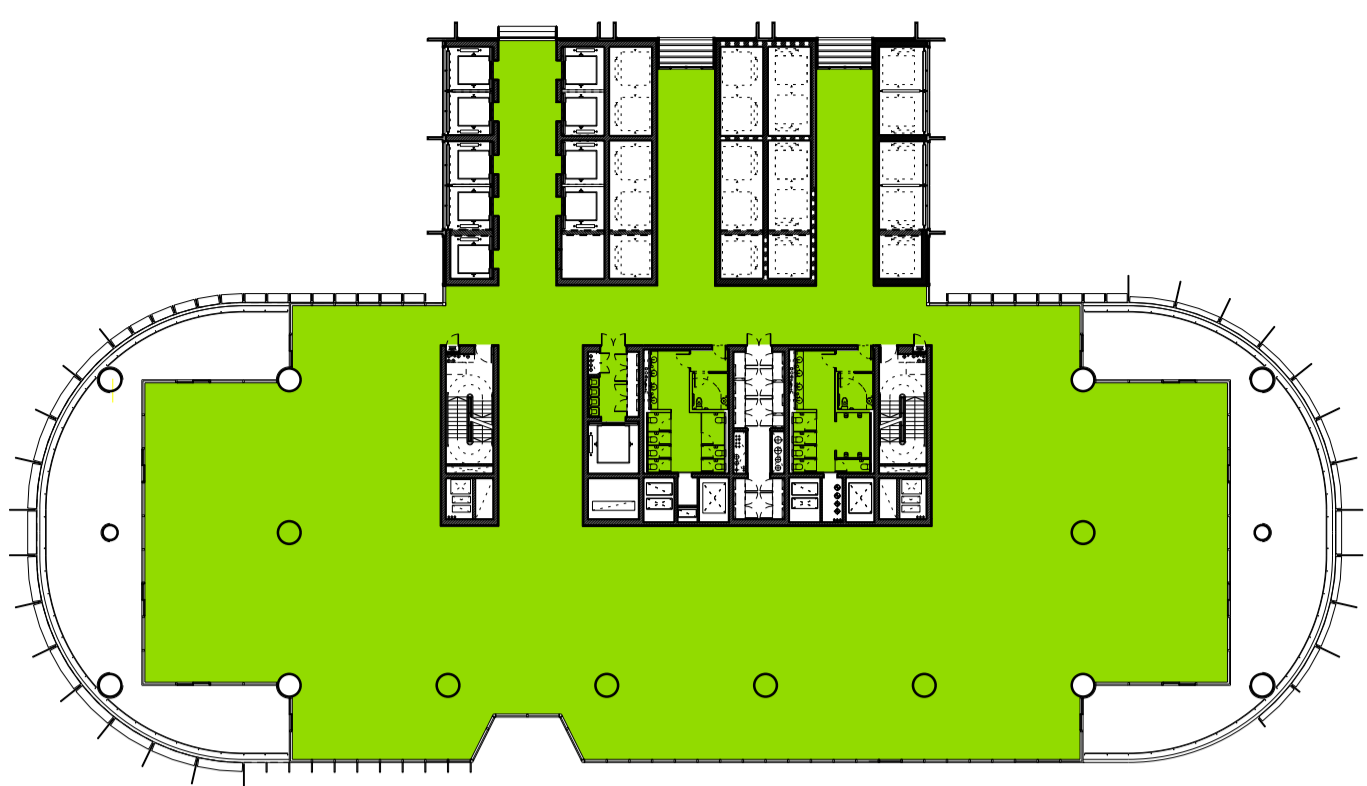
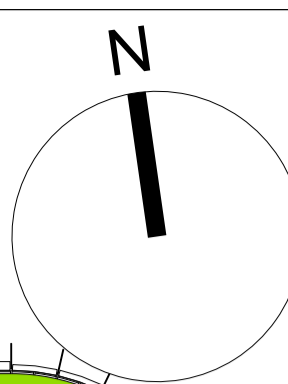
**Project**  
Barangaroo South - C3  
**Drawing Purpose**  
Project Application: MP11\_0044

**Drawn/Checked by**  
AII/LF

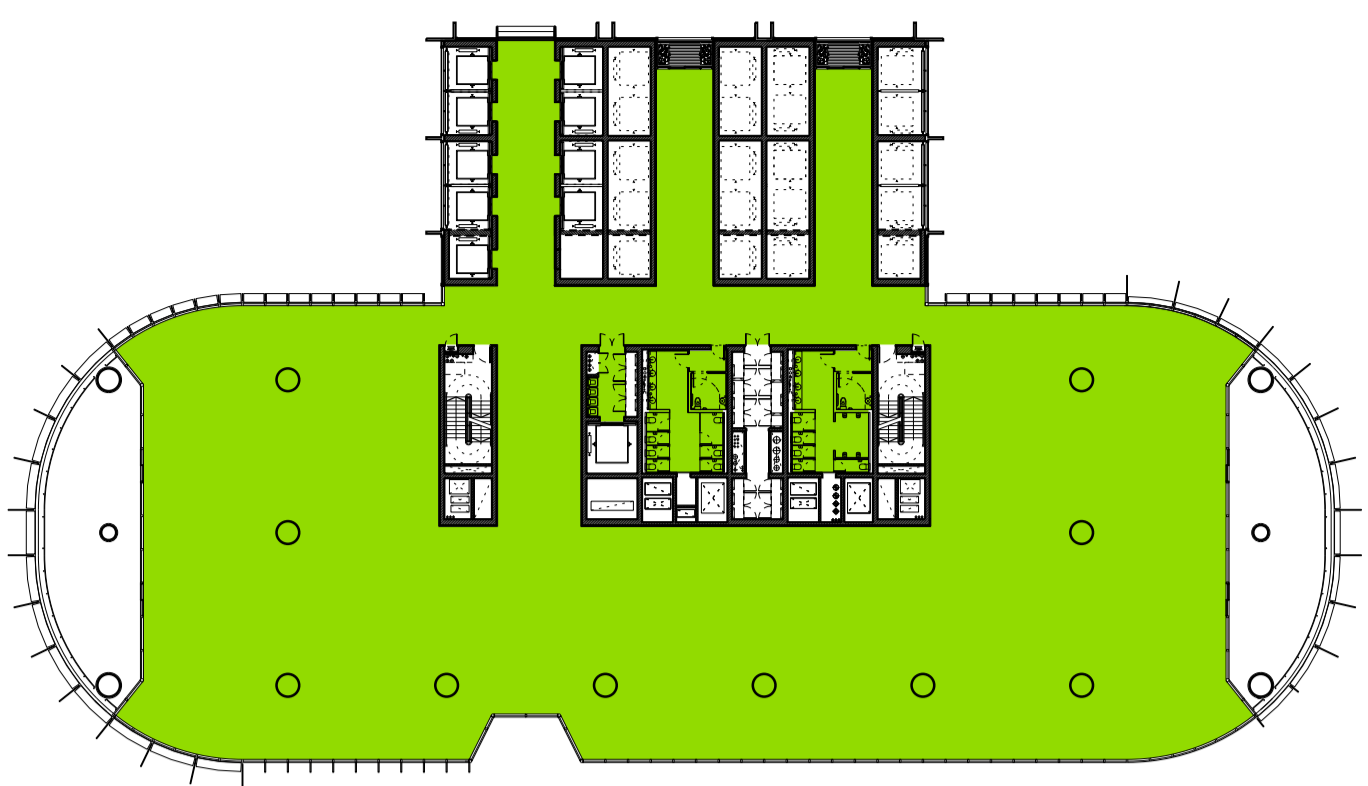
**Drawing Title**  
GFA - Plans  
Atypical Floors  
Level GD-03,18,33,48,49,Rf

**Scale @ A1**  
1:500  
**Drawing Date**  
07-10-2010

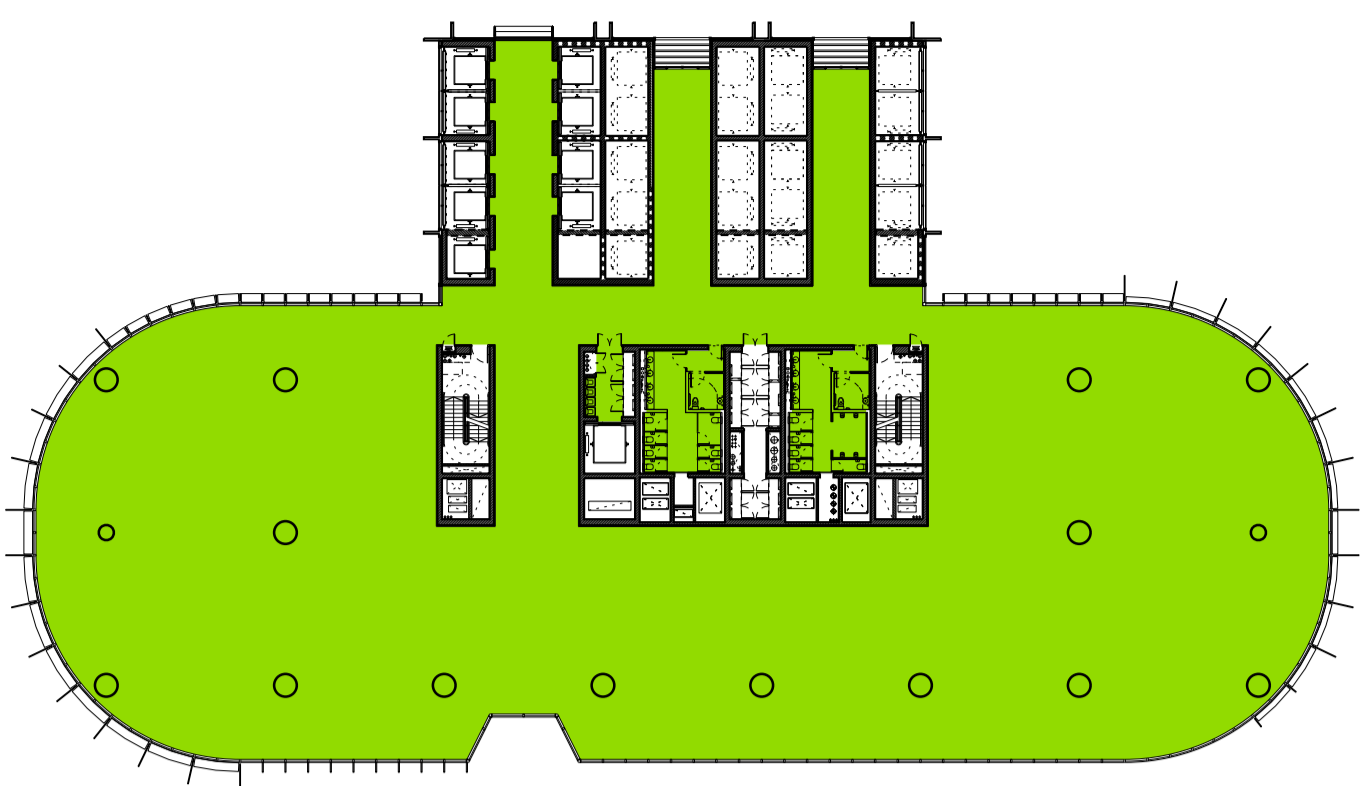
**Drawing Number**  
RSHP-A-3300-P-A  
**Revision Date**  
21-10-2011  
**Revision**  
A



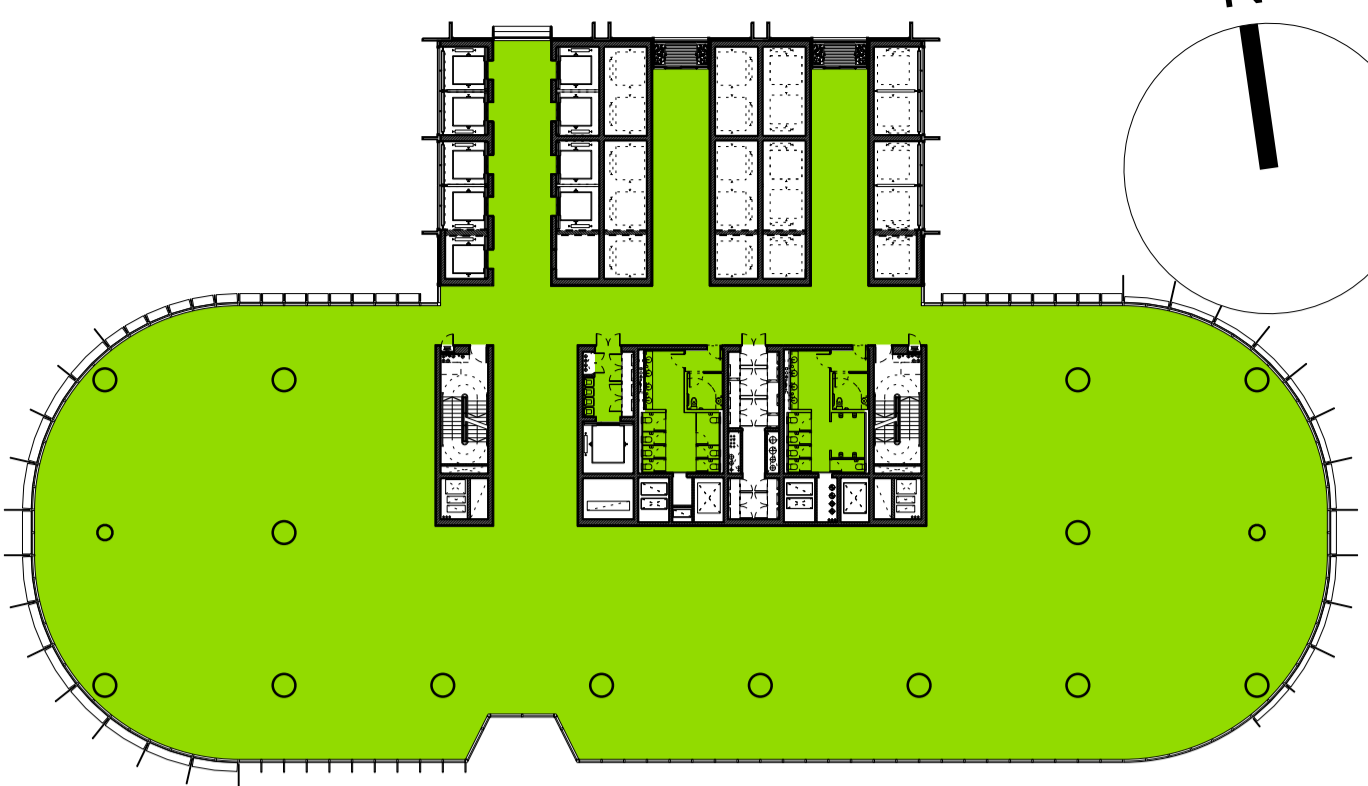
Level 4



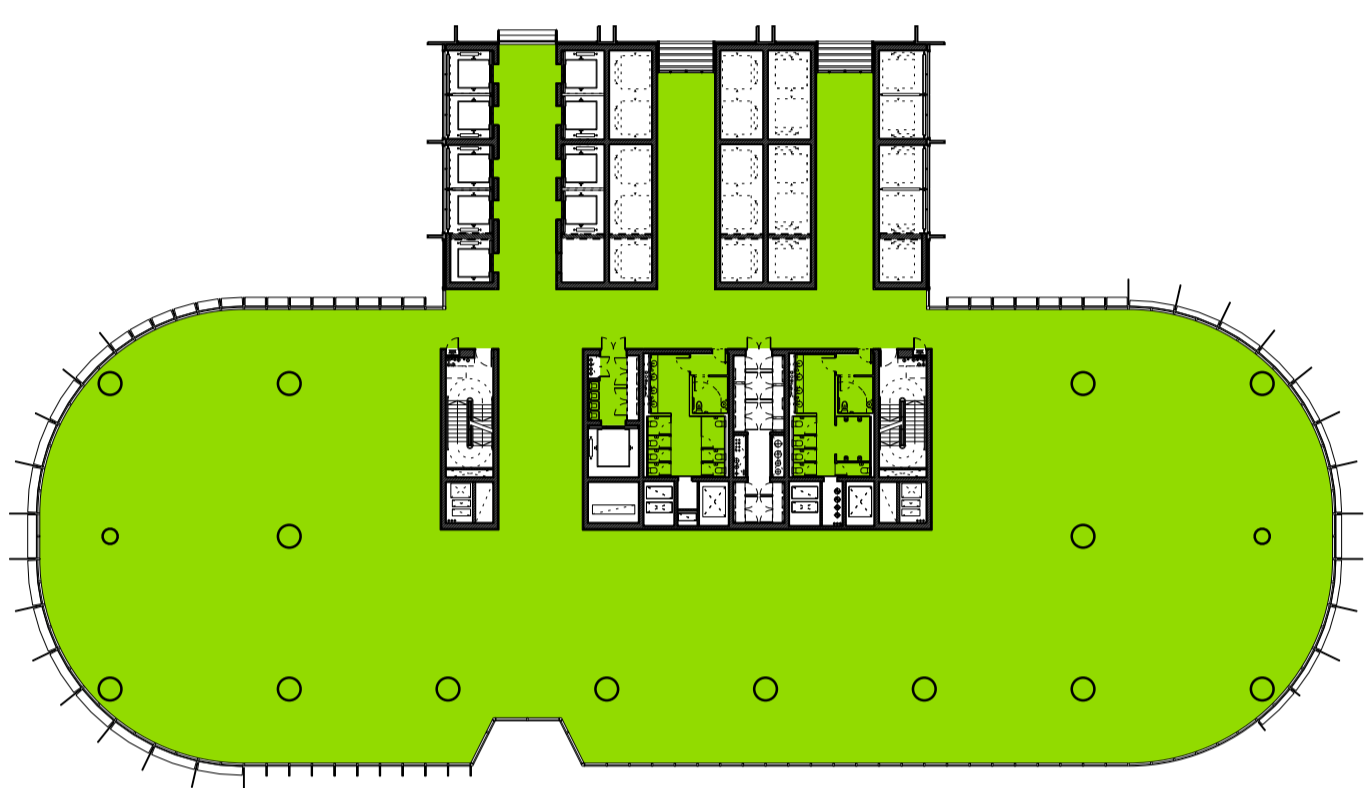
Level 5



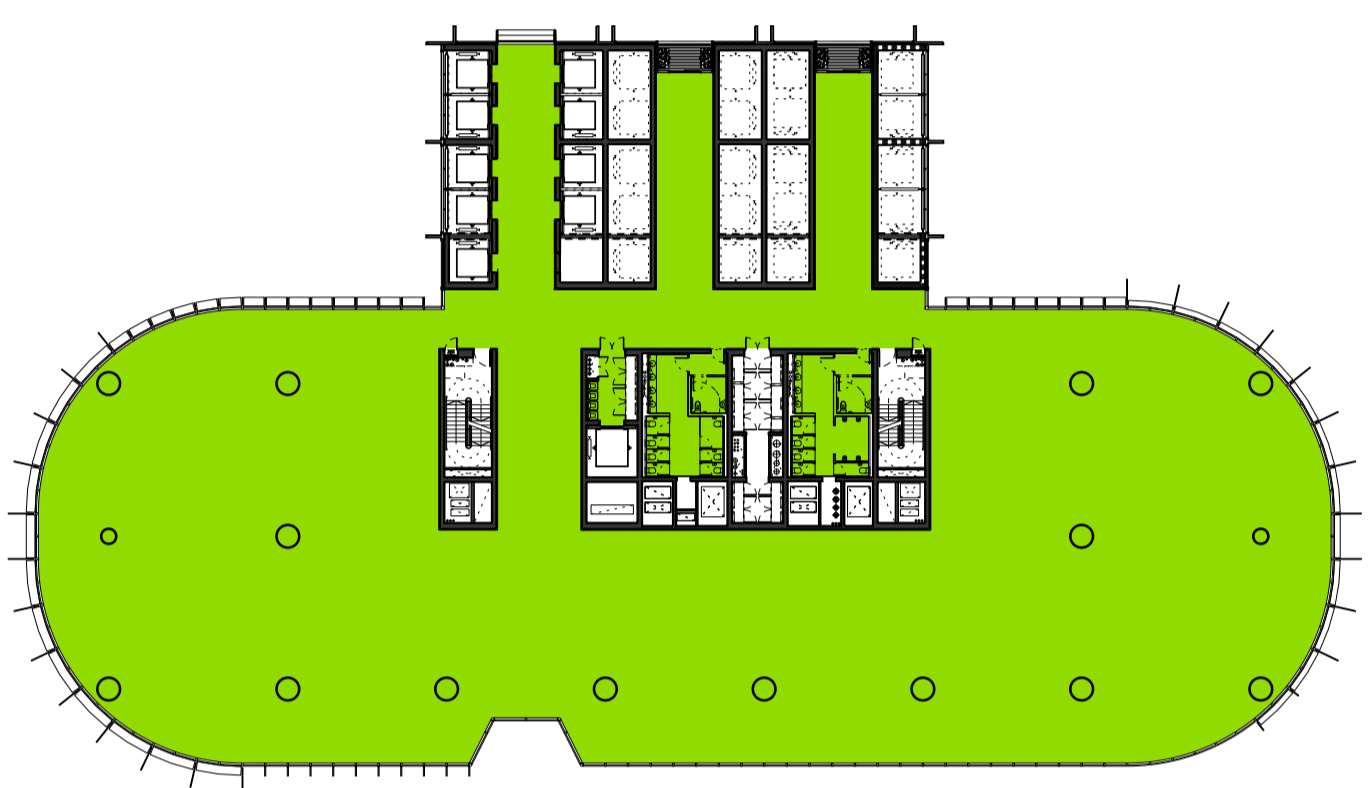
Level 6



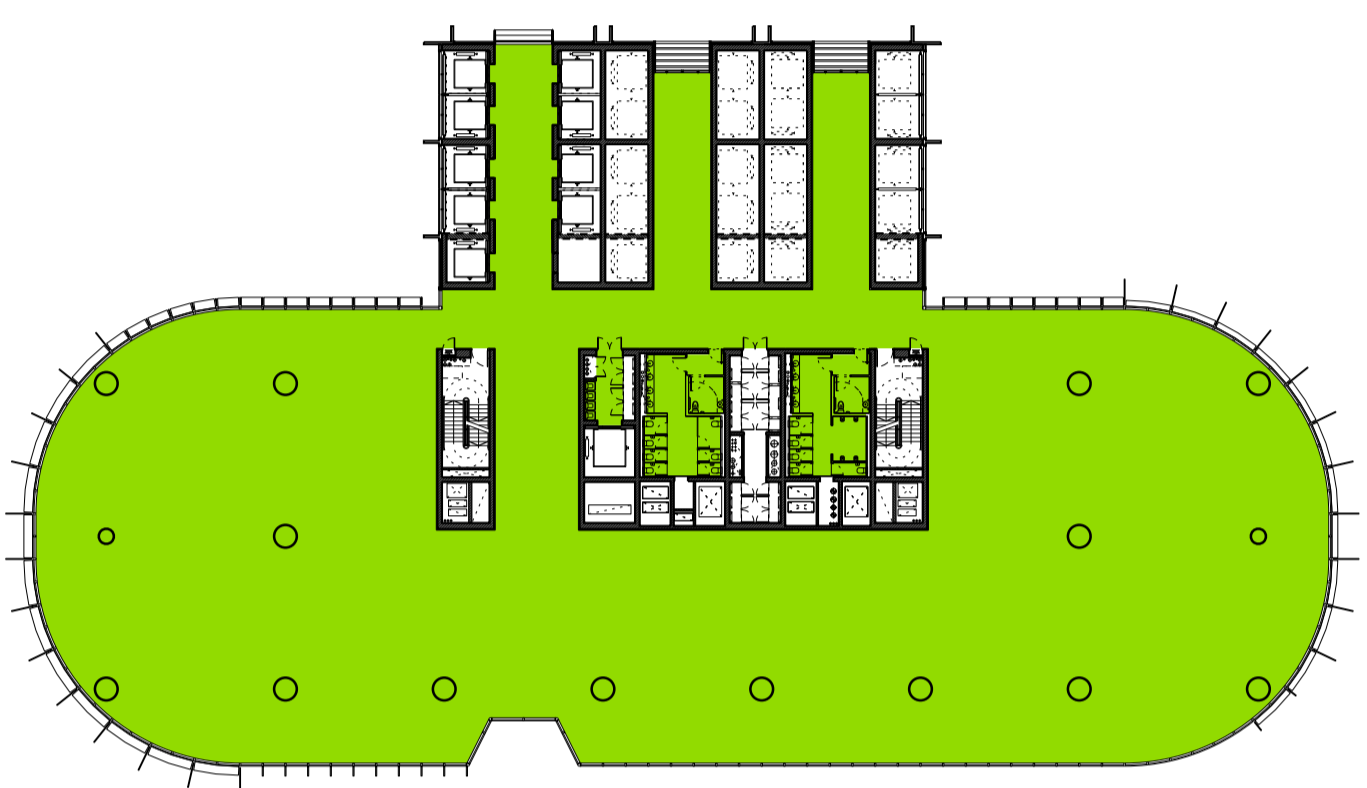
Level 7



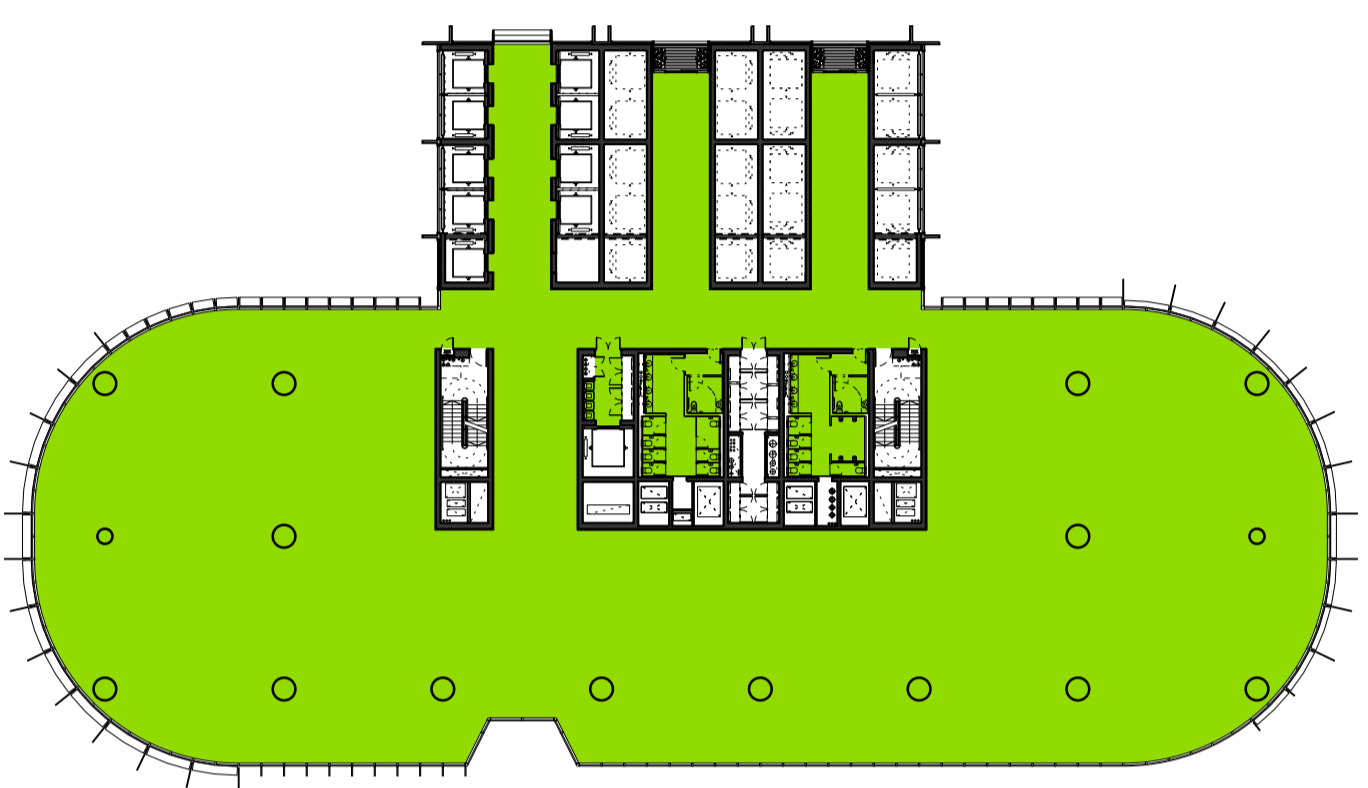
Level 8



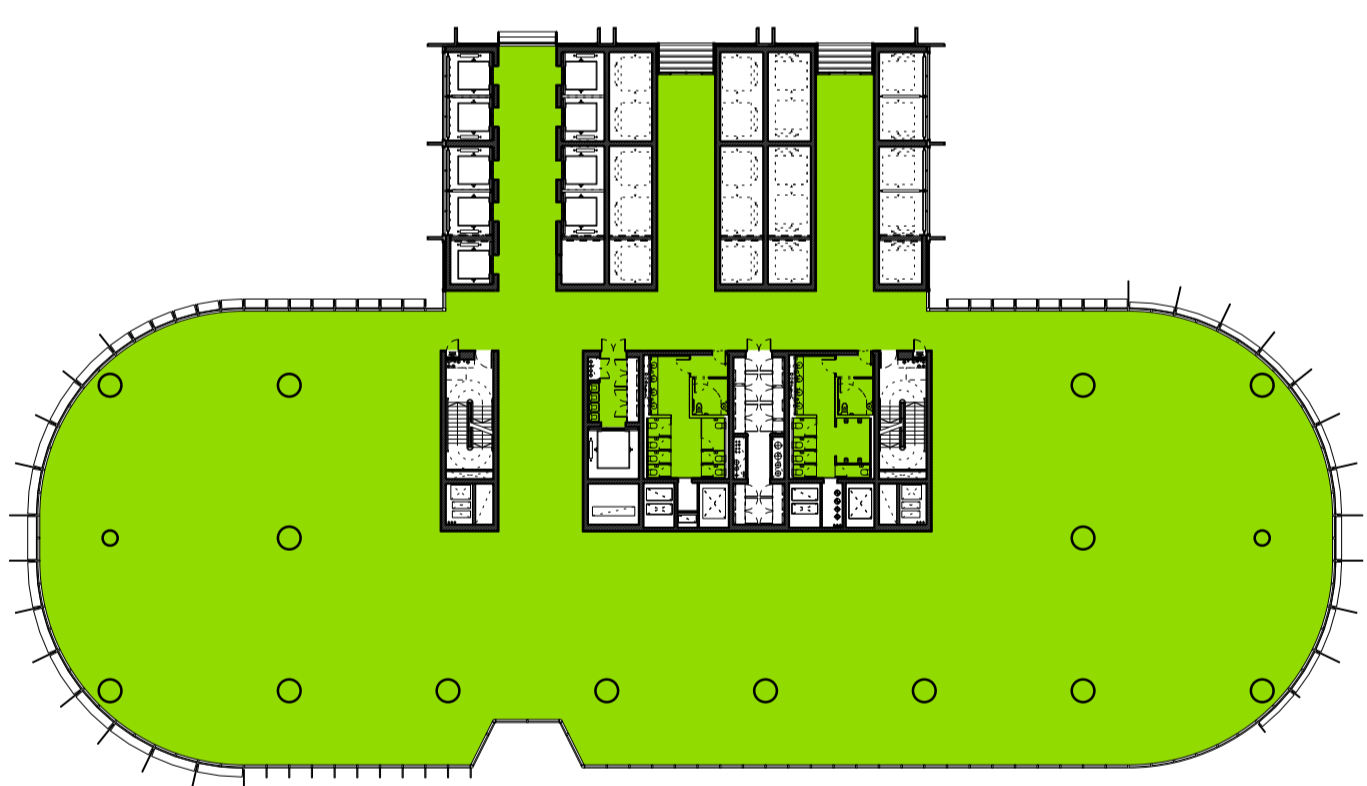
Level 9



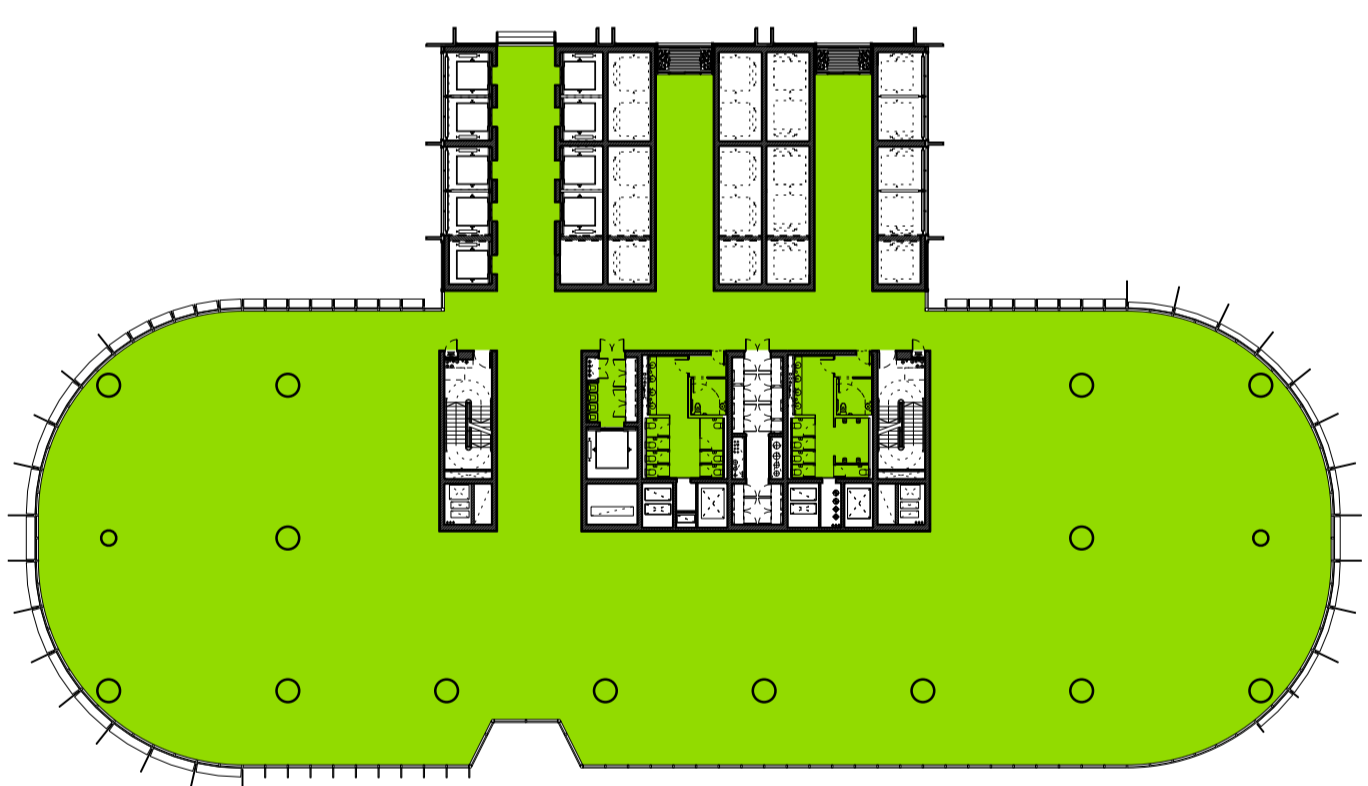
Level 10



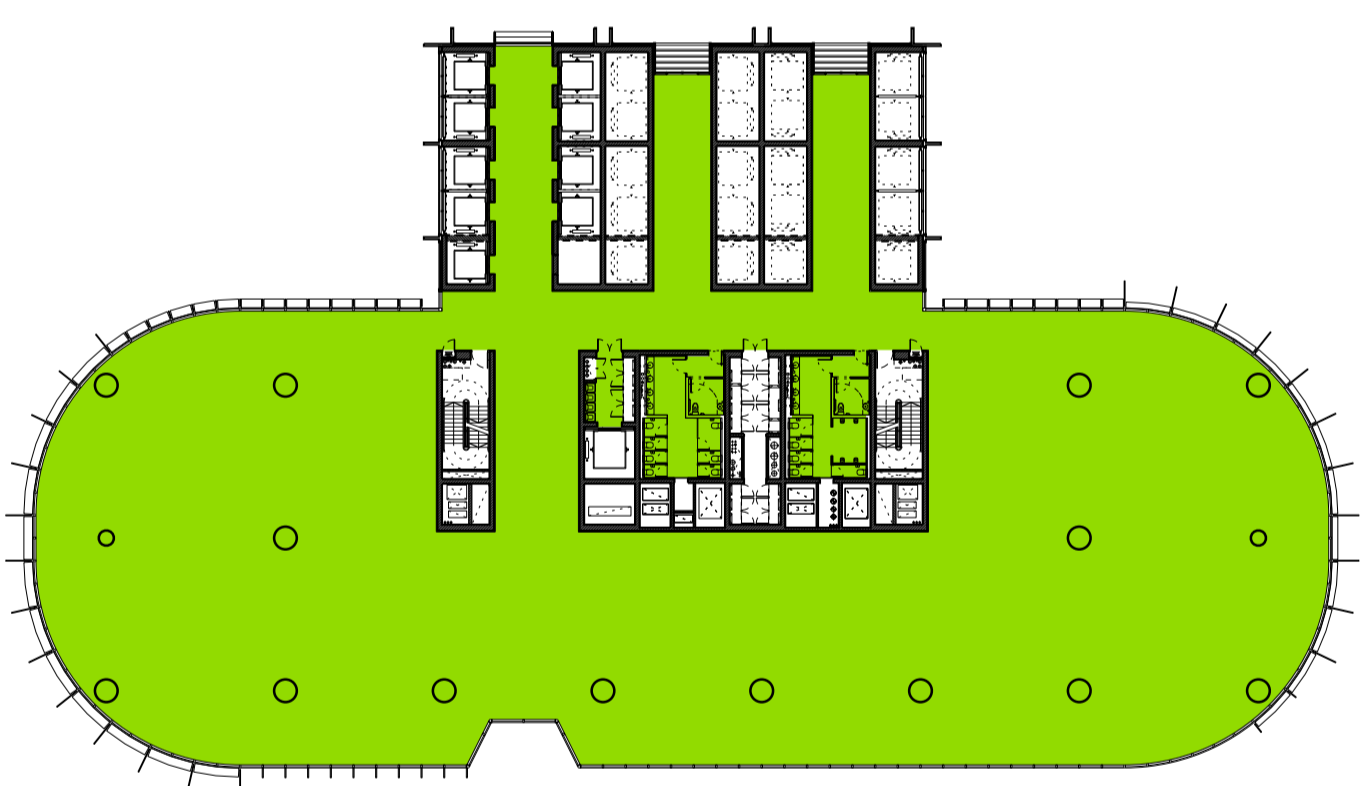
Level 11



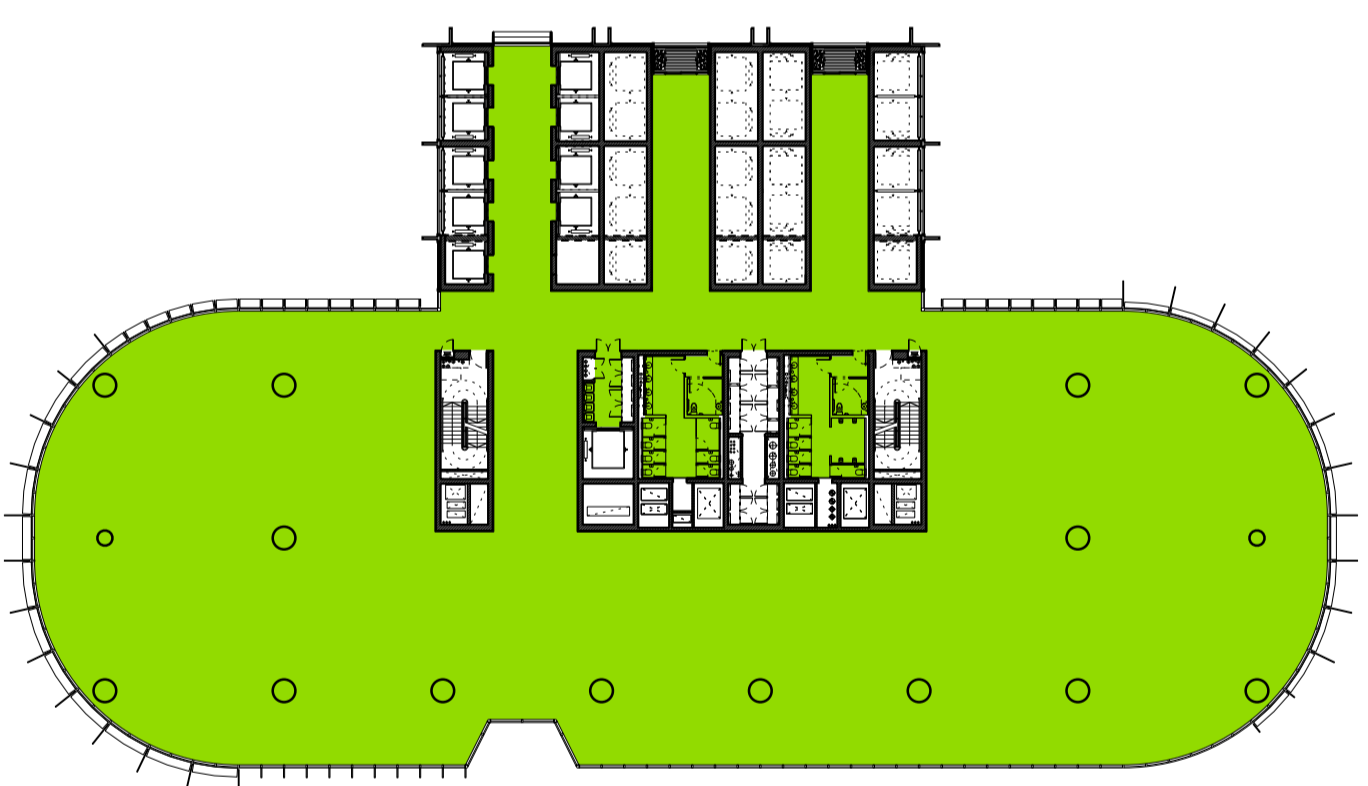
Level 12



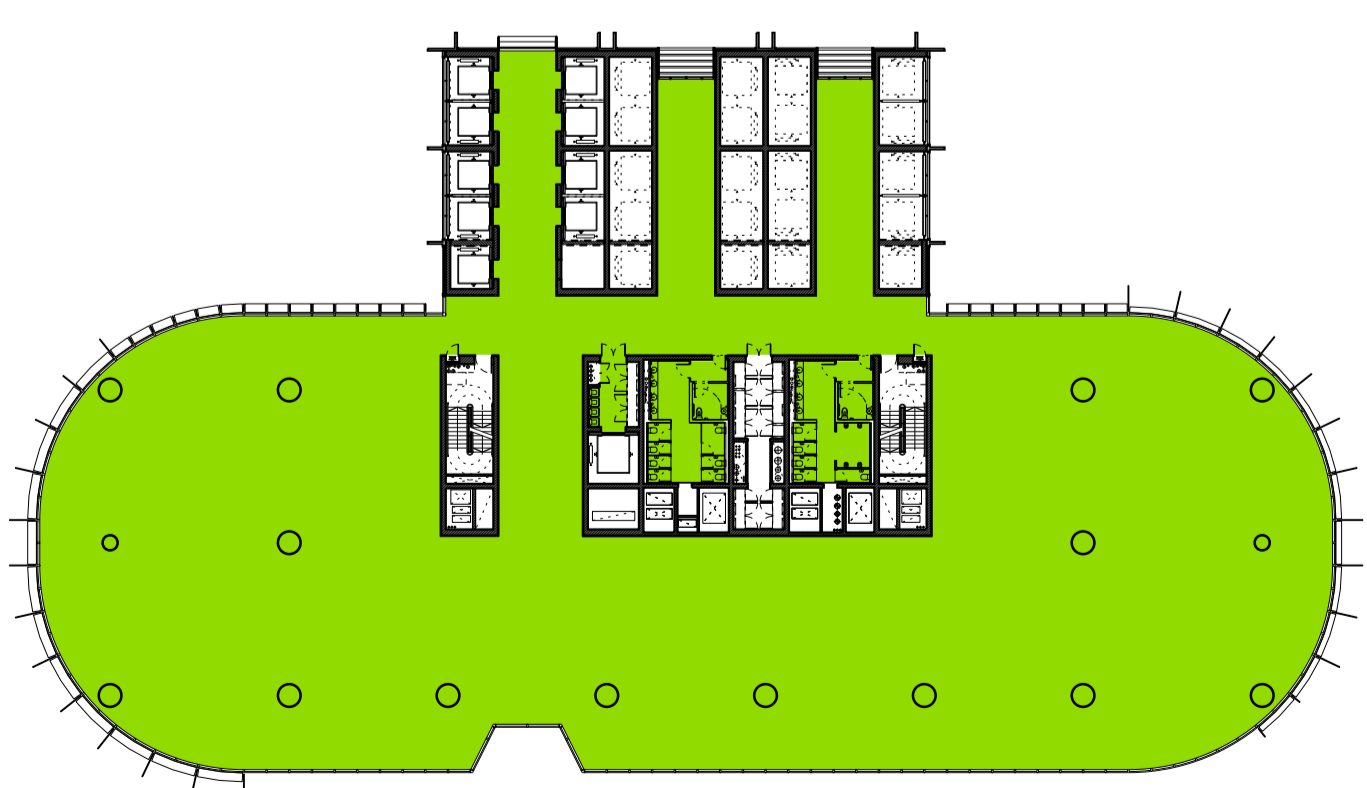
Level 13



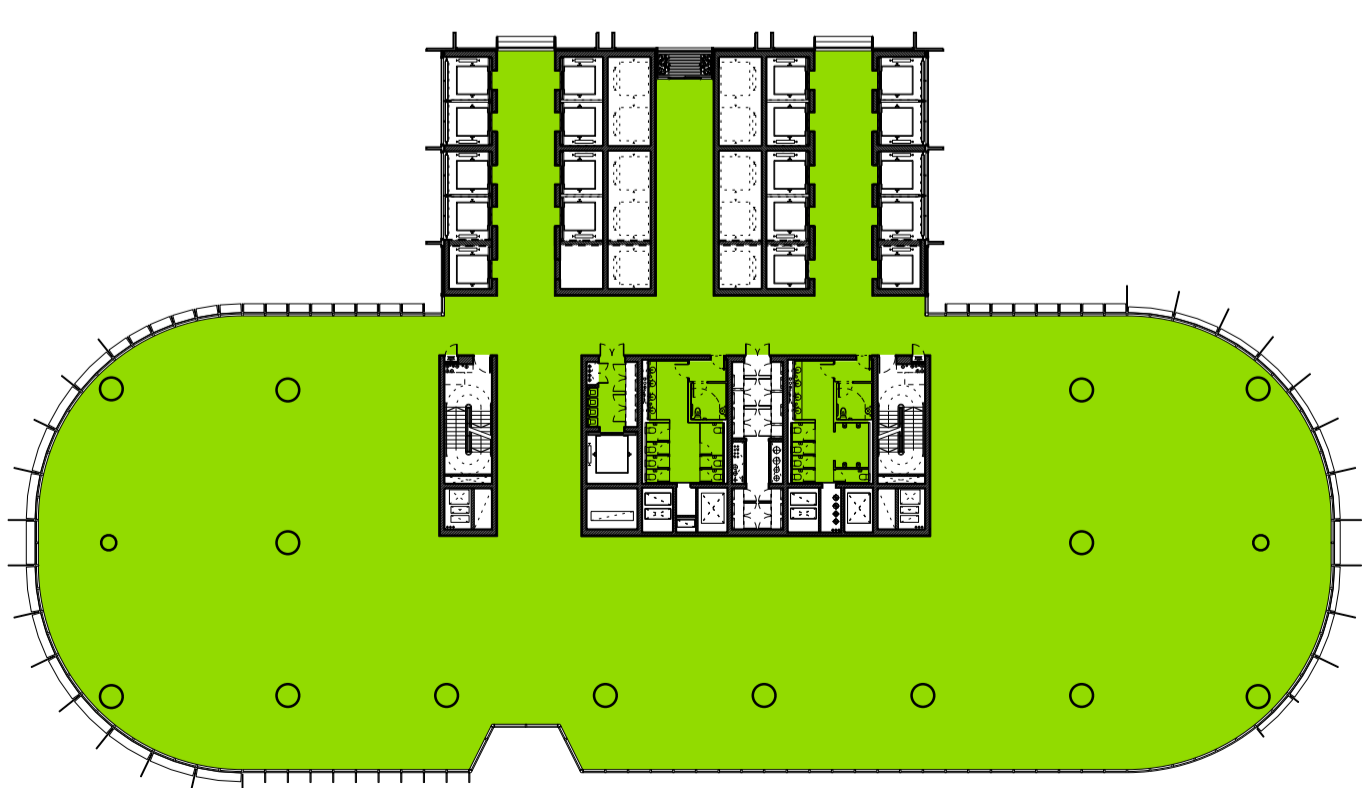
Level 14



Level 15



Level 16



Level 17

Revision	Date	Description
A	07-10-2011	Barangaroo South C3 Project Application MP11_0044

**Legal**  
Do not scale from drawing. The author of this drawing takes no responsibility for any dimensions obtained by measuring or scaling from this drawing and no reference may be placed on such dimensions. It is the responsibility of the recipient to ascertain the dimension specifically from the author or by the measurements.  
The design of all structural and service elements must always be checked against the relevant engineers drawings. No reliance should be placed upon any information shown on this drawing.  
© copyright Rogers Stirk Harbour + Partners. All rights reserved 2010

**Site Address**  
Barangaroo  
Hickson Rd  
Millers Point NSW 2000  
Sydney, Australia

**Lead Architect**  
**RSHP Australia Pty Limited**  
Ivan Harbour | Principal Architect | RAIA NSW ARB 8484  
65-69 Kent St  
Millers Point  
NSW 2000  
Sydney, Australia  
t: +61 2 9253 5655  
f: +61 2 9253 5666  
email: J6100@rsh-p.com  
www.rsh-p.com

**Collaborating Architect**  
**Lend Lease design**  
30 The Bond  
30 Hickson Rd  
Millers Point NSW 2000  
Sydney, Australia  
www.bovislendlease.com  
t: +61 2 9236 6111  
f: +61 2 9383 8133

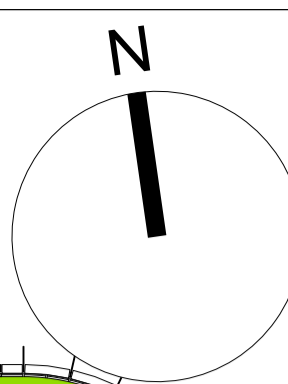
**Client**  
**Lend Lease**  
30 The Bond  
30 Hickson Rd  
Millers Point NSW 2000  
Sydney, Australia  
www.bovislendlease.com  
t: +61 2 9236 6111  
f: +61 2 9383 8133

**Project**  
Barangaroo South - C3  
**Drawing Purpose**  
Project Application: MP11\_0044

**Drawn/Checked by**  
AII/LF  
**Drawing Title**  
GFA - Plans  
Low Rise Office Floors  
Levels 04 - 17

**Scale @ A1**  
1:500  
**Drawing Date**  
07-10-2011

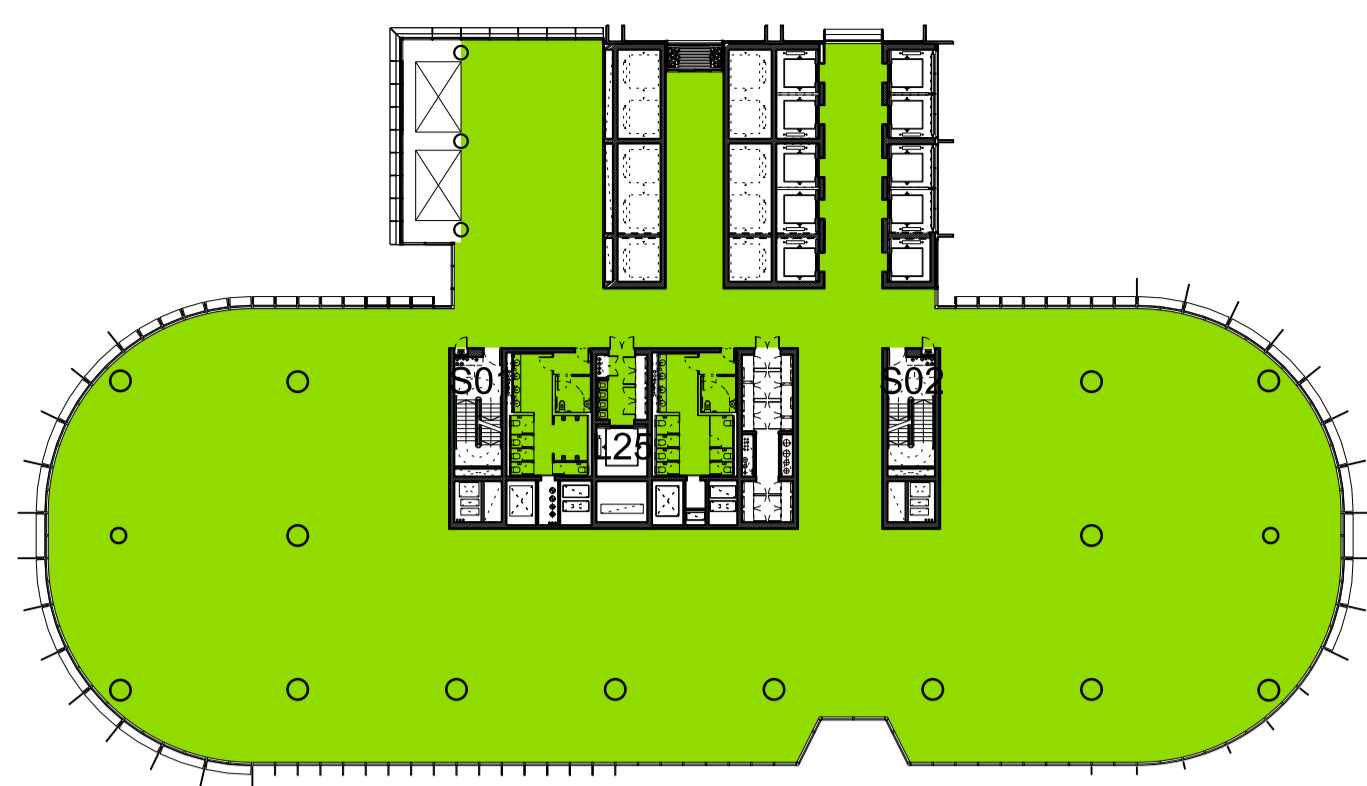
**Drawing Number**  
RSHP-A-3310-P-L  
**Revision Date**  
21-10-2011  
**Revision**  
A



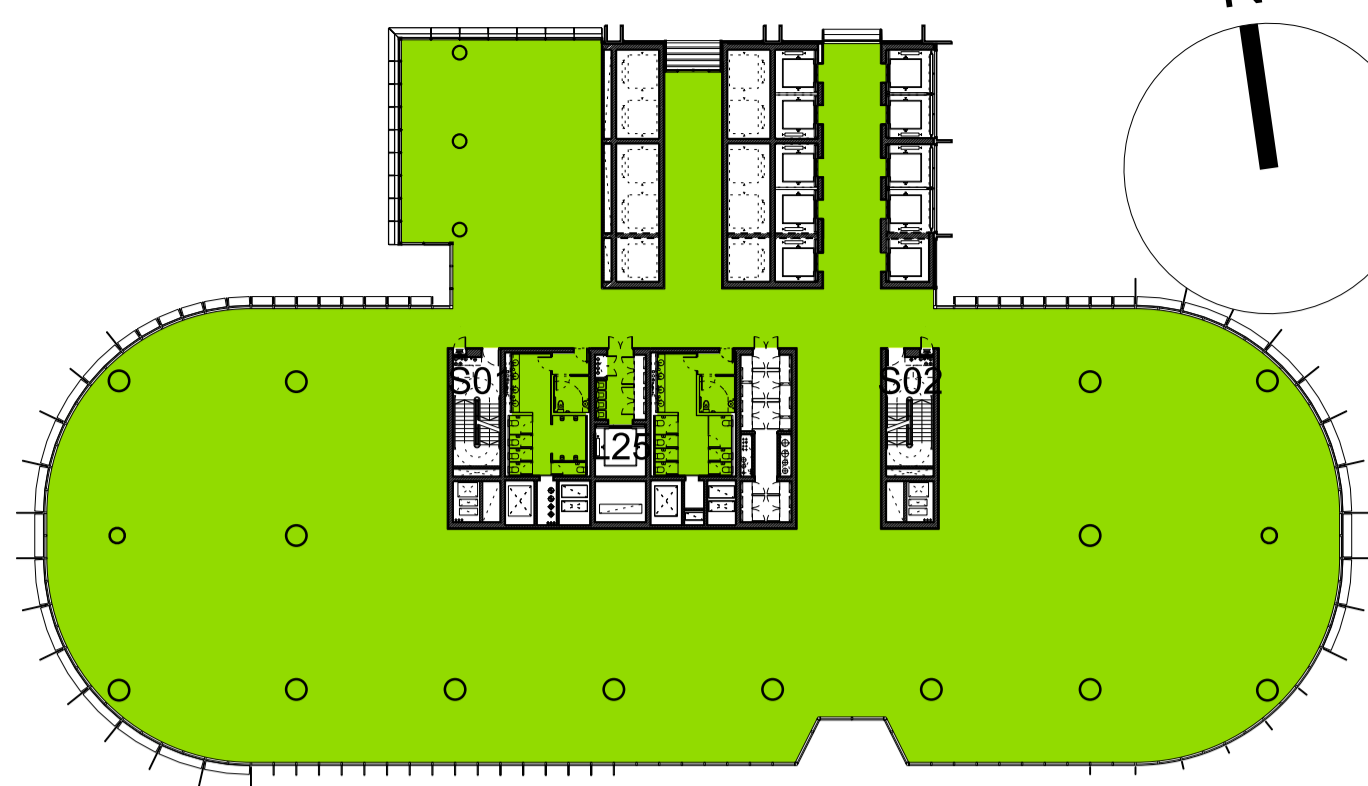
Level 19



Level 20



Level 21



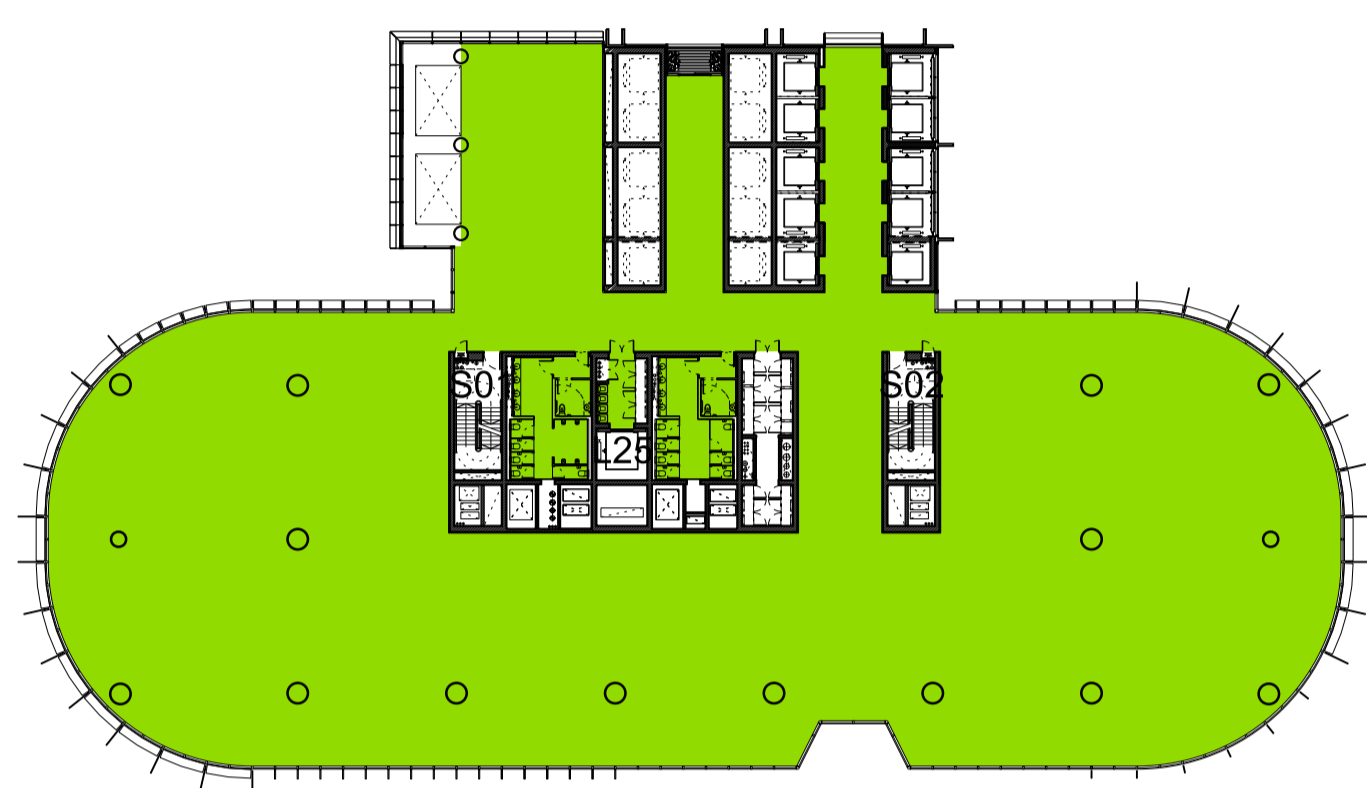
Level 22



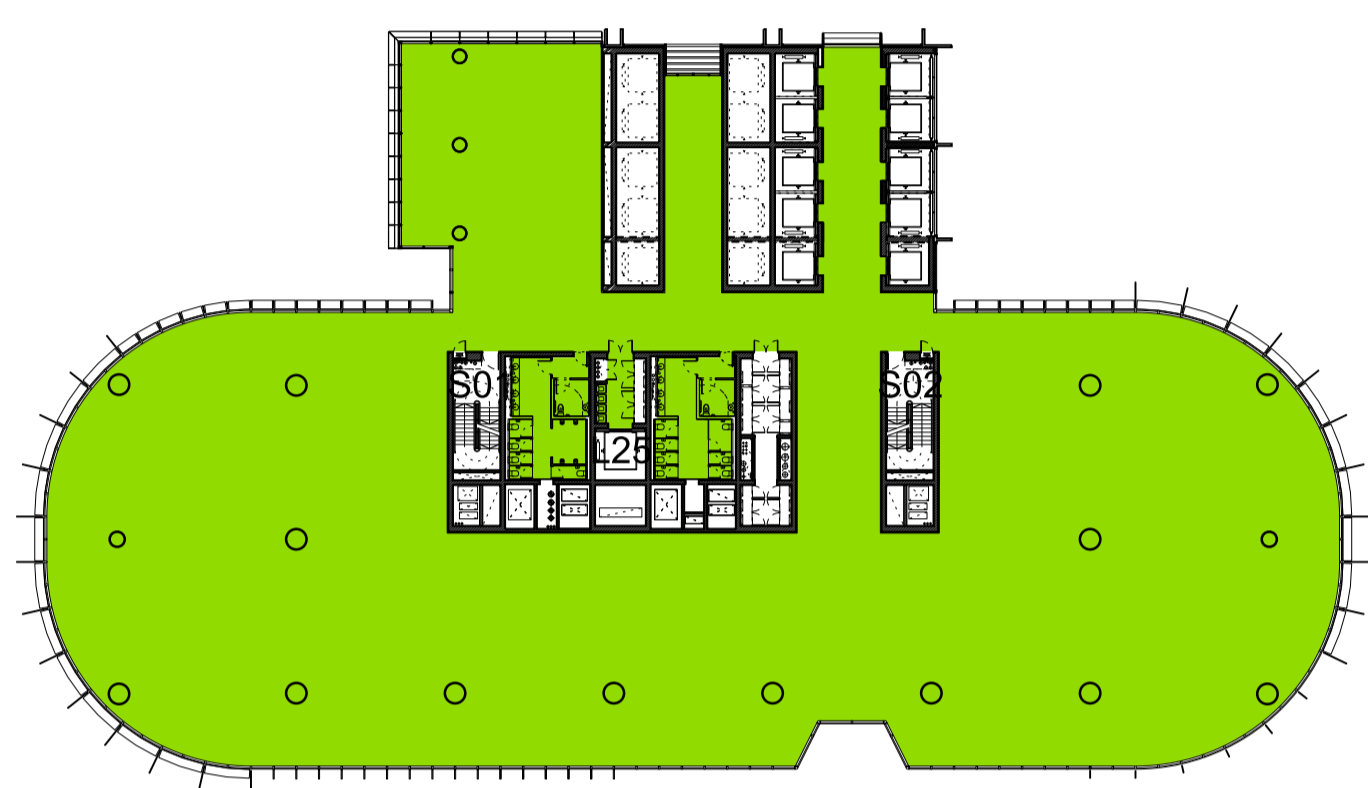
Level 23



Level 24



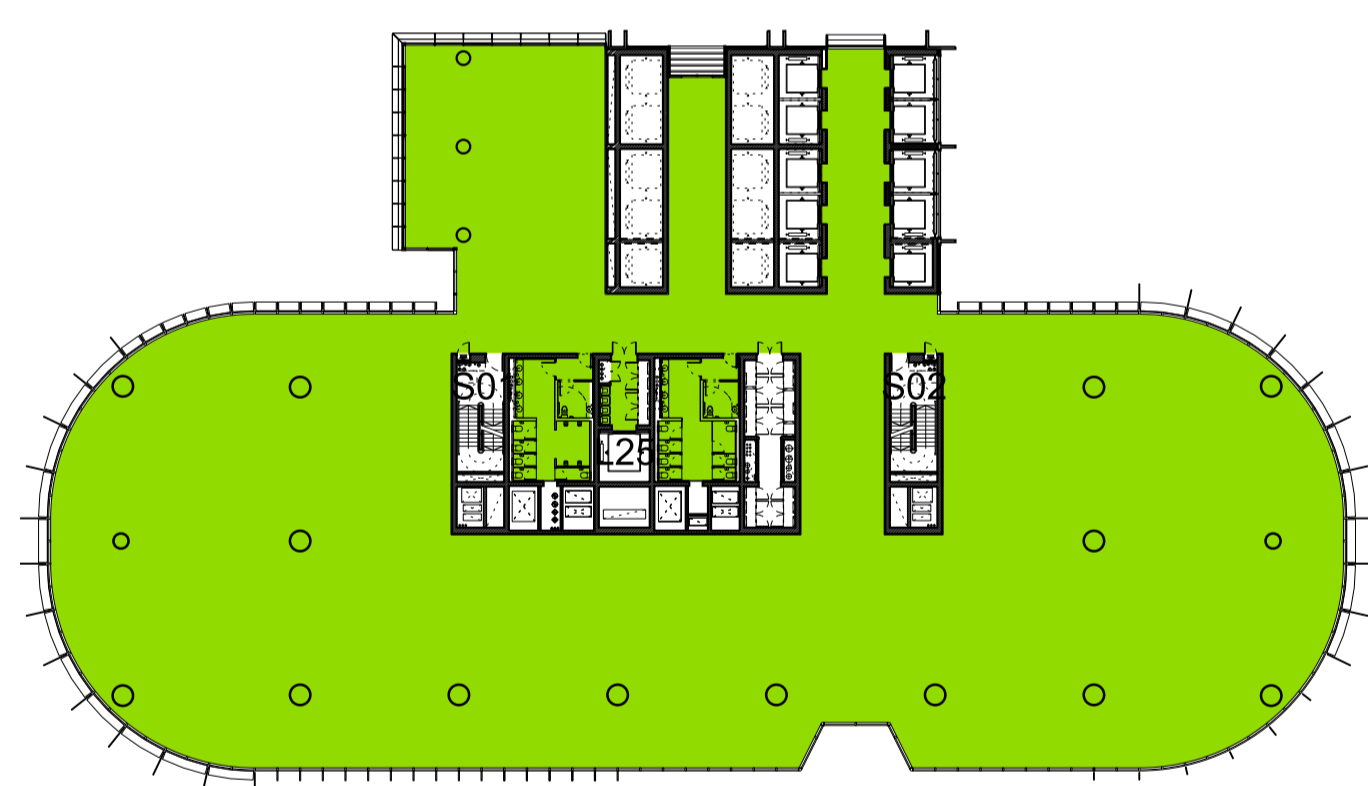
Level 25



Level 26



Level 27



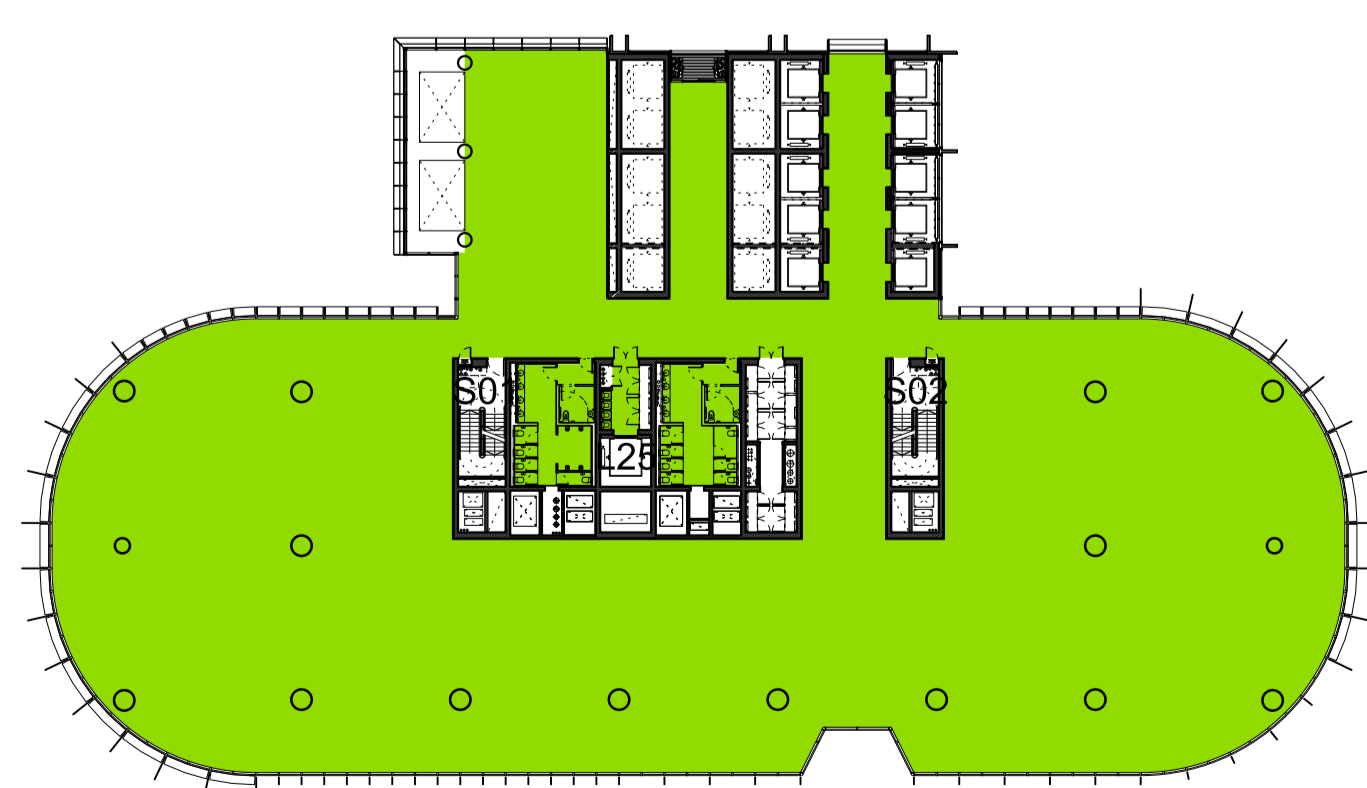
Level 28



Level 29



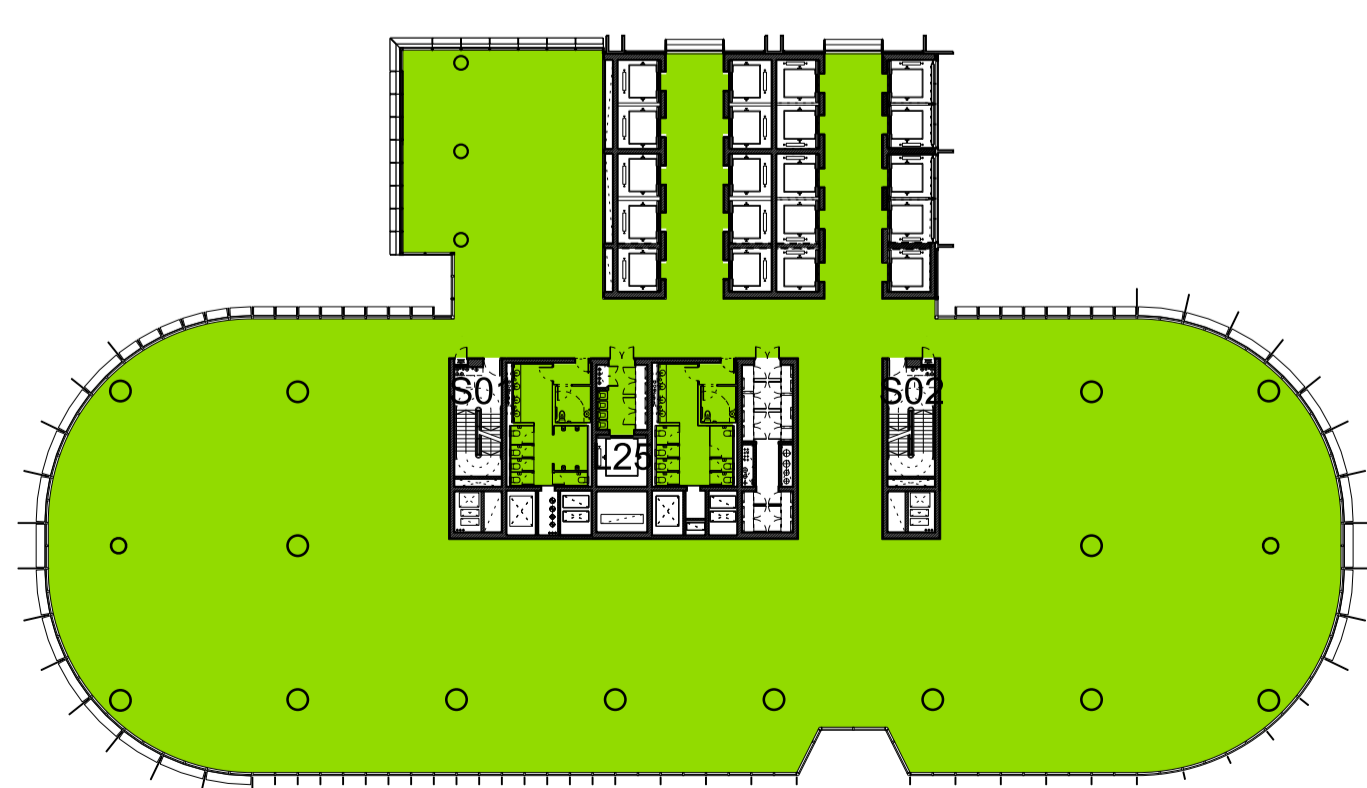
Level 30



Level 31



Level 32



Level 33

Revision	Date	Description
A	21-10-2011	Barangaroo South C3 Project Application MP11_0044

**Legal**  
Do not scale from drawing. The author of this drawing takes no responsibility for any dimensions obtained by measuring or scaling from this drawing and no reference may be placed on such dimensions. It is the responsibility of the recipient to ascertain the dimension specifically from the author or by the measurement.  
The drawing of all structural and service elements must always be checked against the relevant engineers drawings. No reliance should be placed upon any information shown on this drawing.  
© copyright Rogers Stirk Harbour + Partners, all rights reserved 2010

**Site Address**  
Barangaroo  
Hickson Rd  
Millers Point NSW 2000  
Sydney, Australia

**Lead Architect**  
**RSHP Australia Pty Limited**  
Ivan Harbour | Principal Architect | RAIA NSW ARB 8484  
65-69 Kent St  
Millers Point  
NSW 2000  
Sydney, Australia  
t: +61 2 9253 6655  
f: +61 2 9253 6666  
email: J6100@rsh-p.com  
www.rsh-p.com

**Collaborating Architect**  
**Lend Lease design**  
30 The Bond  
30 Hickson Rd  
Millers Point NSW 2000  
Sydney, Australia  
t: +61 2 9236 6111  
f: +61 2 9383 8133  
www.bovislendlease.com

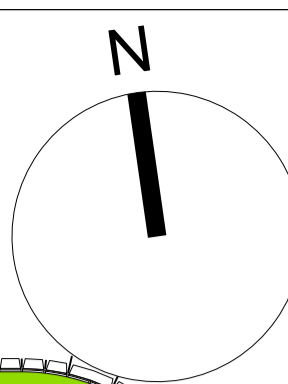
**Client**  
**Lend Lease**  
30 The Bond  
30 Hickson Rd  
Millers Point NSW 2000  
Sydney, Australia  
t: +61 2 9236 6111  
f: +61 2 9383 8133  
www.bovislendlease.com

**Project**  
Barangaroo South - C3  
**Drawing Purpose**  
Project Application: MP11\_0044

**Drawn/Checked by**  
AII/LF  
**Drawing Title**  
GFA - Plans  
Mid Rise Office Floors  
Levels 19 - 32

**Scale @ A1**  
1:500  
**Drawing Date**  
07-10-2011

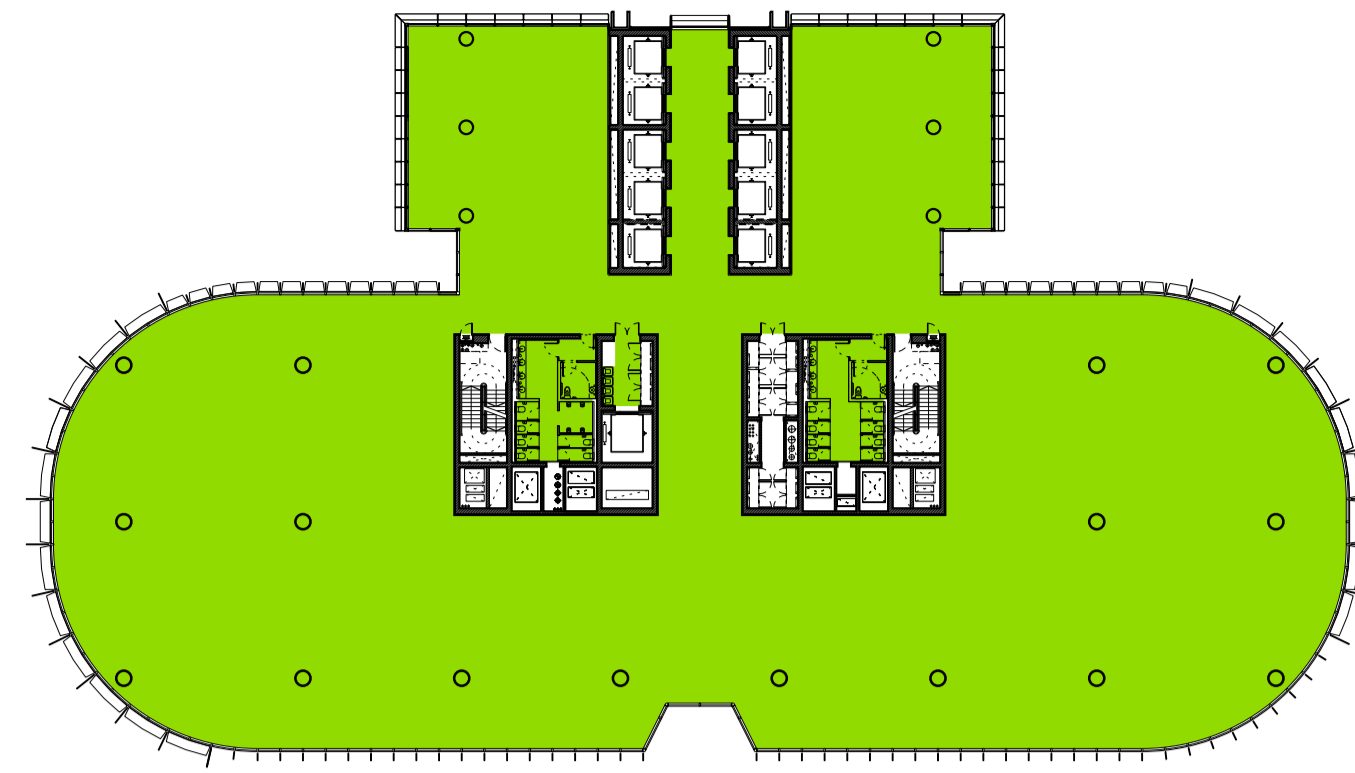
**Drawing Number**  
RSHP-A-3320-P-M  
**Revision Number**  
Revision  
A



Level 35



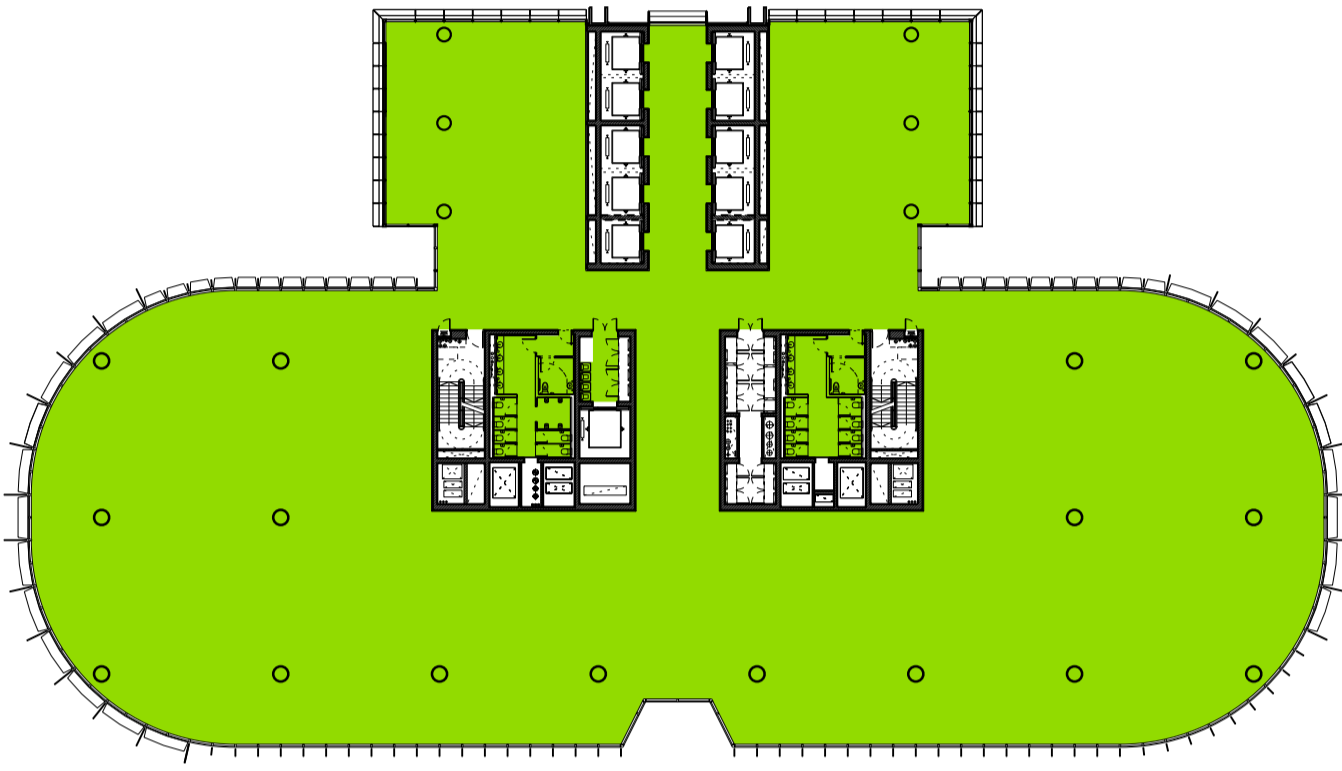
Level 36



Level 37



Level 38



Level 39



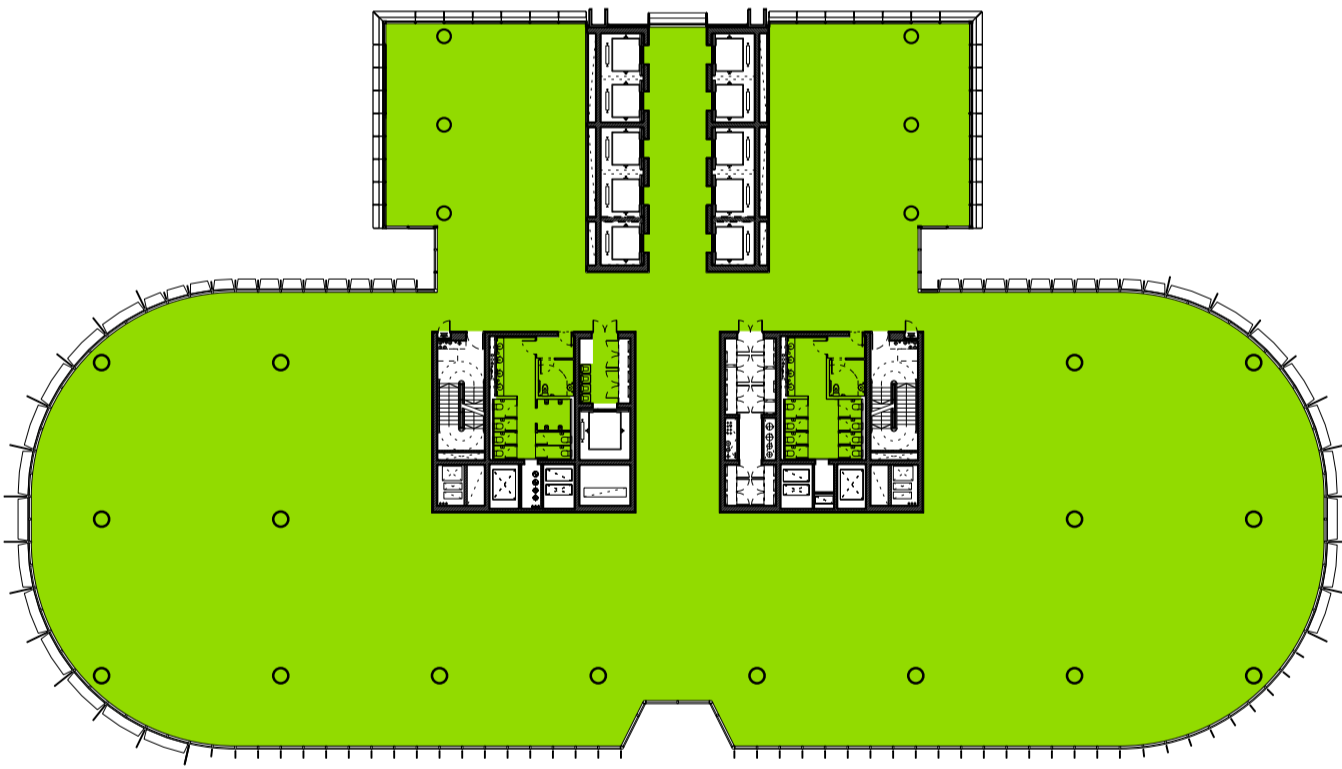
Level 40



Level 41



Level 42



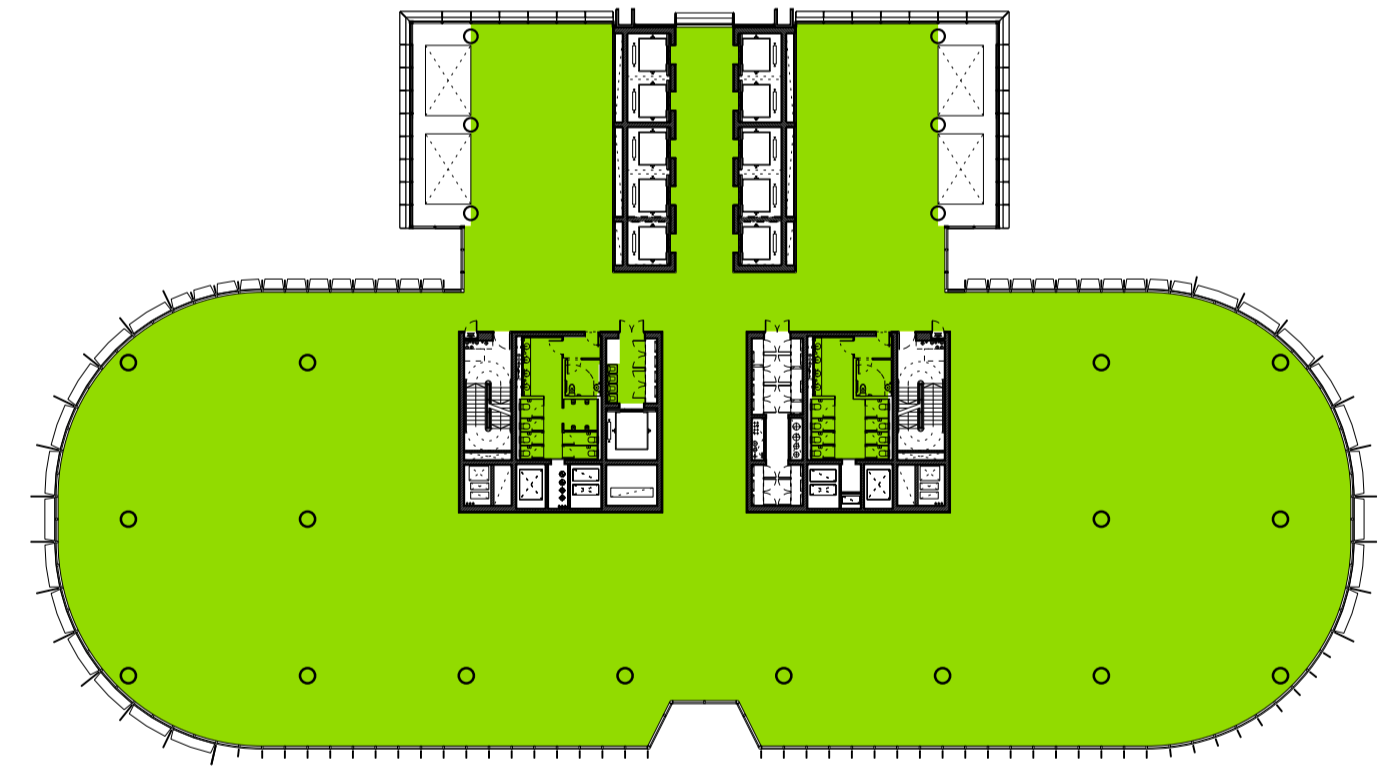
Level 43



Level 44



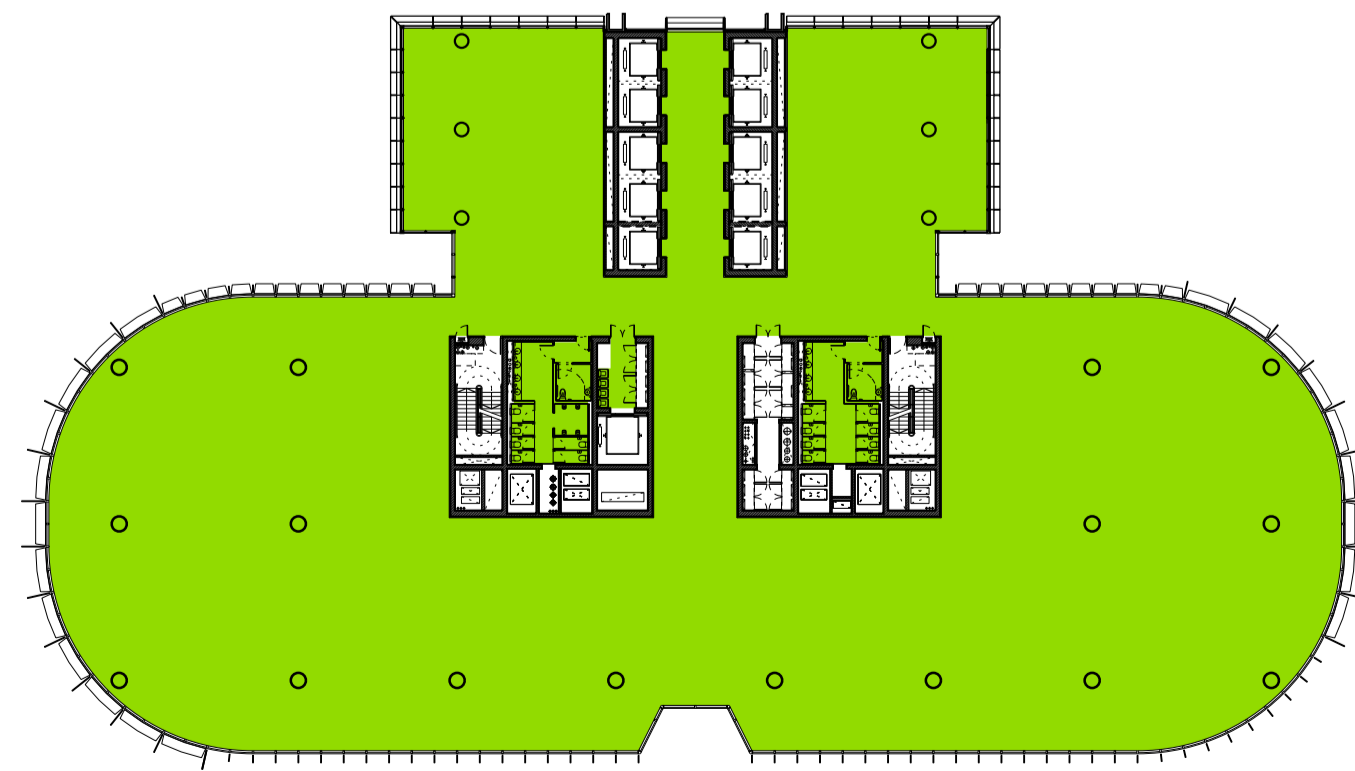
Level 45



Level 46



Level 47



Level 48

Revision	Date	Description
A	07-10-2011	Barangaroo South C3 Project Application MP11_0044

**Legal**  
Do not scale from drawing. The author of this drawing takes no responsibility for any dimensions obtained by measuring or scaling from this drawing and no reference may be placed on such dimensions. It is the responsibility of the recipient to ascertain the dimension specifically from the author or by the measurements.  
The dating of all structural and service elements must always be checked against the relevant engineers drawings. No reliance should be placed on any other information shown on this drawing.  
© copyright Rogers Stirk Harbour + Partners, all rights reserved 2010

**Site Address**  
Barangaroo  
Hickson Rd  
Millers Point NSW 2000  
Sydney, Australia

**Lead Architect**  
**RSHP Australia Pty Limited**  
Ivan Harbour | Principal Architect | RAIA NSW ARB 8484  
65-69 Kent St  
Millers Point  
NSW 2000  
Sydney, Australia  
t: +61 2 9253 6111  
f: +61 2 9253 6666  
email: J6100@rsh-p.com  
www.rsh-p.com

**Collaborating Architect**  
**Lend Lease design**  
30 The Bond  
30 Hickson Rd  
Millers Point NSW 2000  
Sydney, Australia  
t: +61 2 9236 6111  
f: +61 2 9383 8133  
www.bovislendlease.com

**Client**  
**Lend Lease**  
30 The Bond  
30 Hickson Rd  
Millers Point NSW 2000  
Sydney, Australia  
t: +61 2 9236 6111  
f: +61 2 9383 8133  
www.bovislendlease.com

**Project**  
Barangaroo South - C3  
**Drawing Purpose**  
Project Application: MP11\_0044

**Drawn/Checked by**  
AII/LF

**Drawing Title**  
GFA - Plans  
High Rise Office Floors  
Levels 34 - 47

**Scale @ A1**  
1:500  
**Drawing Date**  
07-10-2010

**Drawing Number**  
RSHP-A-3330-P-H  
**Revision Date**  
21-10-2011  
**Revision**  
A