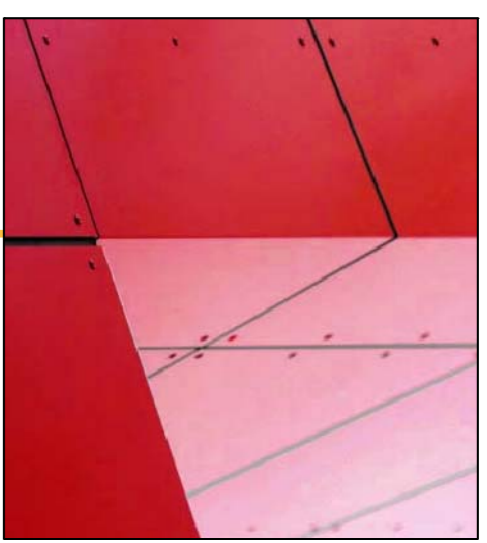


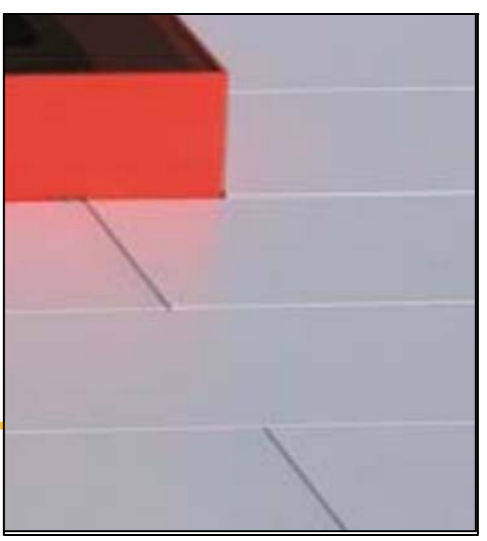
(CB)



(ALB)



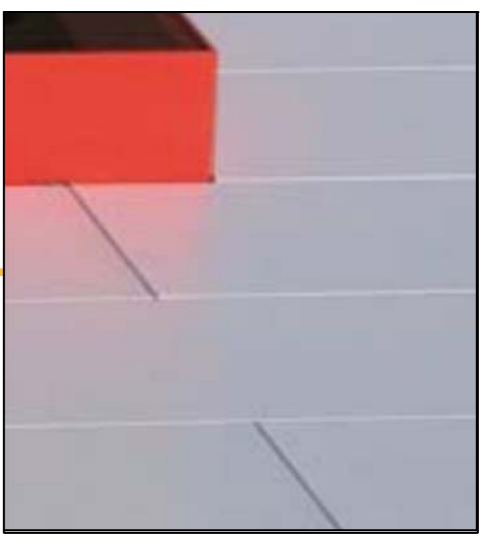
(ALB)



(AW)

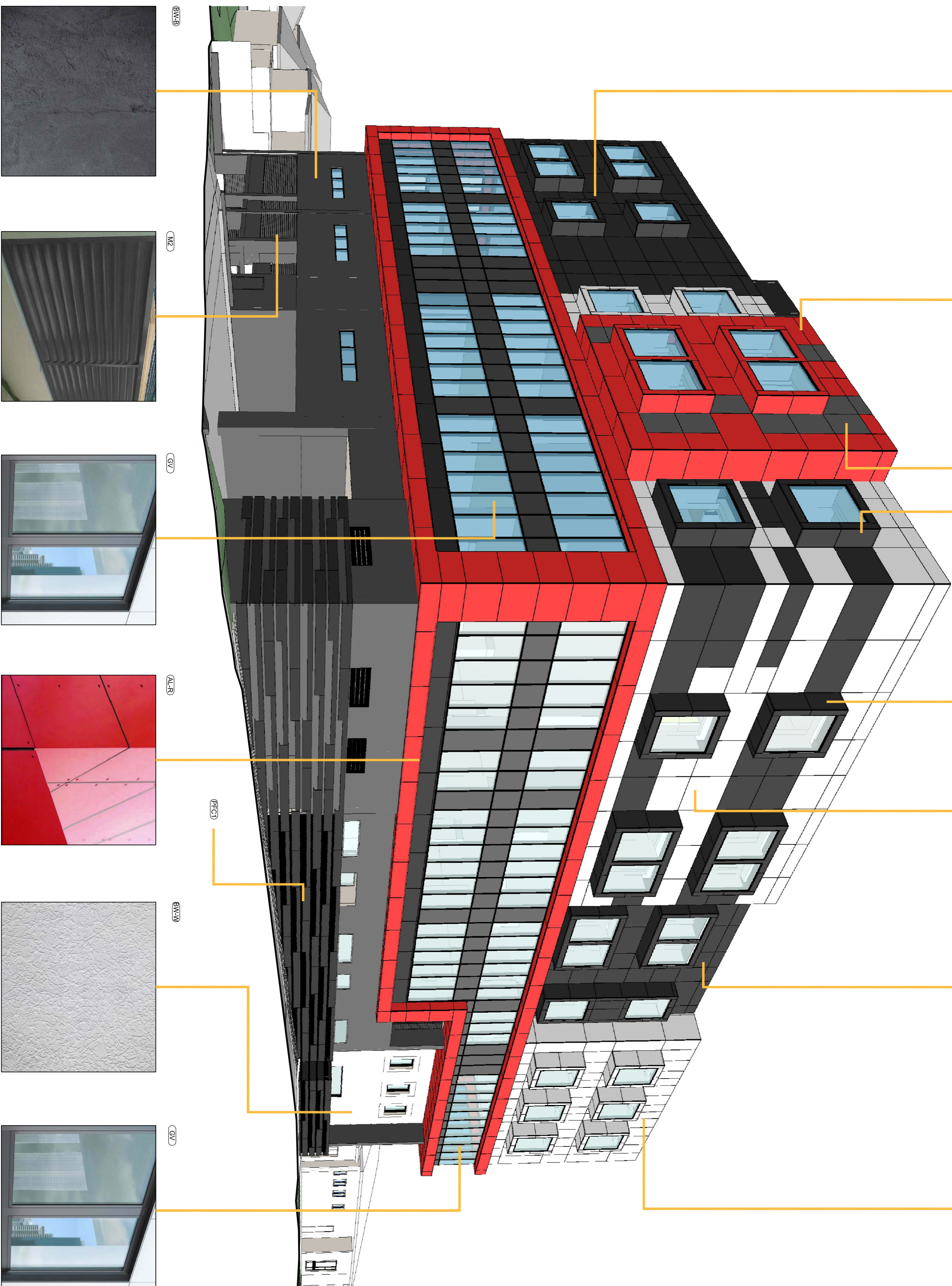


(FCB)



(AW)

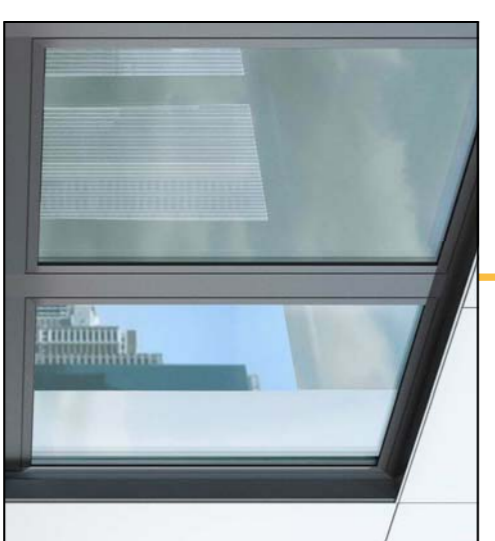
- NOTE:**
- (CB) PAINTED CONCRETE PANEL - WHITE
  - (CB) PAINTED CONCRETE PANEL - BLACK
  - (ALB) COMPOSITE ALUMINIUM PANEL - RED
  - (ALB) COMPOSITE ALUMINIUM PANEL - WHITE
  - (ALB) COMPOSITE ALUMINIUM PANEL - BLACK
  - (ALB) PAINT FINISH RENDERED BLOCKWORK - WHITE
  - (ALB) PAINT FINISH RENDERED BLOCKWORK - BLACK
  - (ALB) PAINT FINISH RENDERED BLOCKWORK - GREY
  - (ALB) INTERPON POWDERCOAT - ANODIC NATURAL
  - (ALB) INTERPON POWDERCOAT - ROSEBERRY GREY
  - (ALB) CFC SHEET PANEL - WHITE
  - (ALB) CFC SHEET PANEL - BLACK
  - (ALB) CFC SHEET PANEL - RED
  - (ALB) DECORATIVE PFC SCREEN - BLACK
  - (ALB) VISION GLASS
  - (ALB) SPANDREL PANEL - CHARCOAL



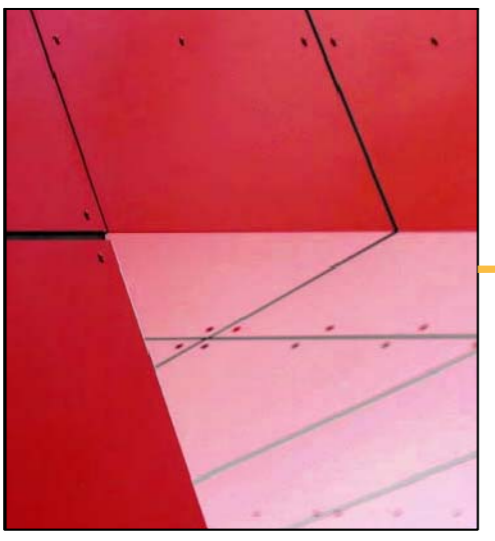
(CB)



(ALB)



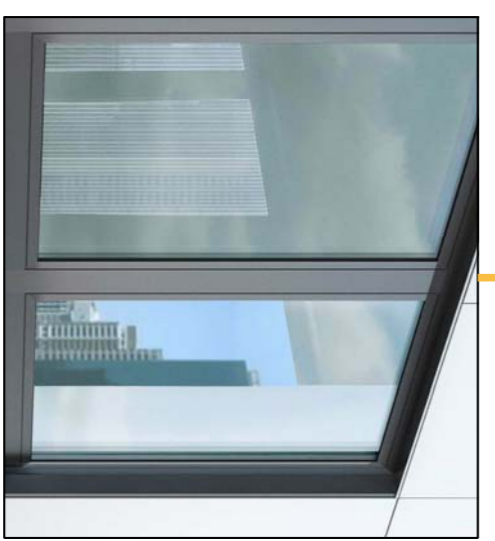
(ALB)



(ALB)



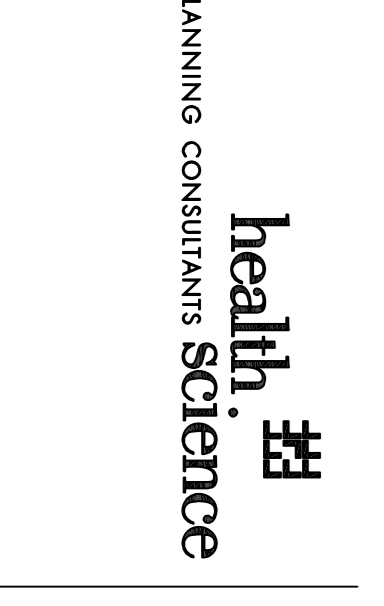
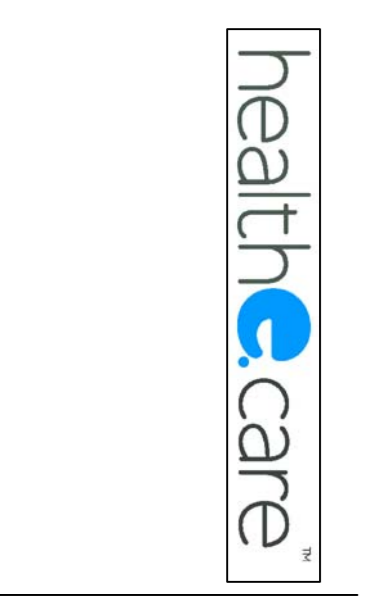
(FCB)



(ALB)

ISSUE REFERENCE	ISSUE REFERENCE	ISSUE REFERENCE	ISSUE REFERENCE	ISSUE REFERENCE	ISSUE REFERENCE	ISSUE REFERENCE	ISSUE REFERENCE	ISSUE REFERENCE	ISSUE REFERENCE	ISSUE REFERENCE	ISSUE REFERENCE	ISSUE REFERENCE	ISSUE REFERENCE	ISSUE REFERENCE	ISSUE REFERENCE	ISSUE REFERENCE	ISSUE REFERENCE	ISSUE REFERENCE	ISSUE REFERENCE	
A	B	C	D	E	F	G	H	I	J	K	L	M	N	O	P	Q	R	S	T	U
ISSUE FOR DEVELOPMENT APPROVAL US	ISSUE FOR DEVELOPMENT APPROVAL US	ISSUE FOR DEVELOPMENT APPROVAL US	ISSUE FOR DEVELOPMENT APPROVAL US	ISSUE FOR DEVELOPMENT APPROVAL US	ISSUE FOR DEVELOPMENT APPROVAL US	ISSUE FOR DEVELOPMENT APPROVAL US	ISSUE FOR DEVELOPMENT APPROVAL US	ISSUE FOR DEVELOPMENT APPROVAL US	ISSUE FOR DEVELOPMENT APPROVAL US	ISSUE FOR DEVELOPMENT APPROVAL US	ISSUE FOR DEVELOPMENT APPROVAL US	ISSUE FOR DEVELOPMENT APPROVAL US	ISSUE FOR DEVELOPMENT APPROVAL US	ISSUE FOR DEVELOPMENT APPROVAL US	ISSUE FOR DEVELOPMENT APPROVAL US	ISSUE FOR DEVELOPMENT APPROVAL US	ISSUE FOR DEVELOPMENT APPROVAL US	ISSUE FOR DEVELOPMENT APPROVAL US	ISSUE FOR DEVELOPMENT APPROVAL US	ISSUE FOR DEVELOPMENT APPROVAL US
DATE	DATE	DATE	DATE	DATE	DATE	DATE	DATE	DATE	DATE	DATE	DATE	DATE	DATE	DATE	DATE	DATE	DATE	DATE	DATE	DATE
10/18/12	10/18/12	10/18/12	10/18/12	10/18/12	10/18/12	10/18/12	10/18/12	10/18/12	10/18/12	10/18/12	10/18/12	10/18/12	10/18/12	10/18/12	10/18/12	10/18/12	10/18/12	10/18/12	10/18/12	10/18/12

CONSULTANTS:



**MELBOURNE**  
 Level 6, 81 Market Street  
 Melbourne VIC Australia 3000  
 TEL: (03) 9823 2334  
 FAX: (03) 9823 2334  
 Email info@hsc.com.au  
 ADRN 34 000 195 770  
 ACRN 059 182 719

**SYDNEY**  
 Level 6, 81 Market Street  
 Sydney NSW Australia 2000  
 TEL: (02) 8888 5777  
 FAX: (02) 8888 5745  
 Email info@hsc.com.au  
 ADRN 30 000 016 606  
 ACRN 059 010 806

REASON FOR ISSUE:  
 #4663 MP 11\_0042 - MOD2

PROJECT:  
 HURSTVILLE PRIVATE HOSPITAL

TITLE:  
 MATERIALS BOARD  
 SHEET 1

DRAWING NO:  
 DA-08

NORTH:

SCALE:  
 NTS@A1

PROJECT NO:  
 40-1076

REV:  
 E