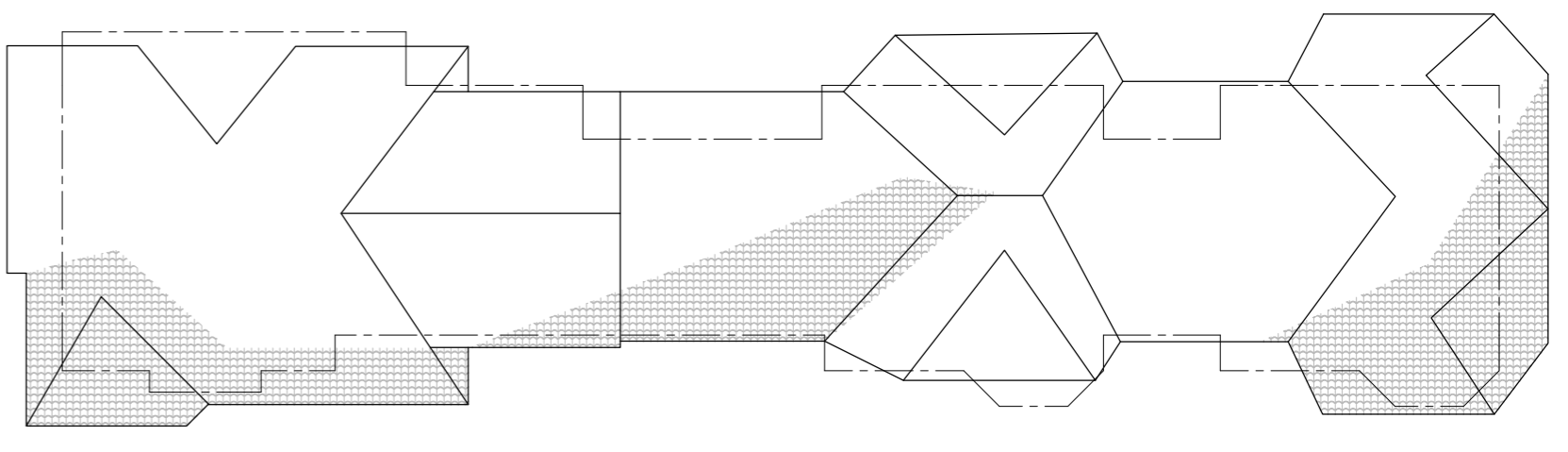


TITLE BOUNDARY

TITLE BOUNDARY

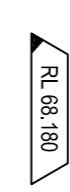
TITLE BOUNDARY



TITLE BOUNDARY

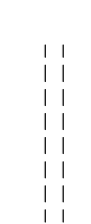
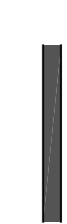

DASHED LINE OF HOSPITAL OVER

EXISTING GROUND LEVEL HOSPITAL OVER

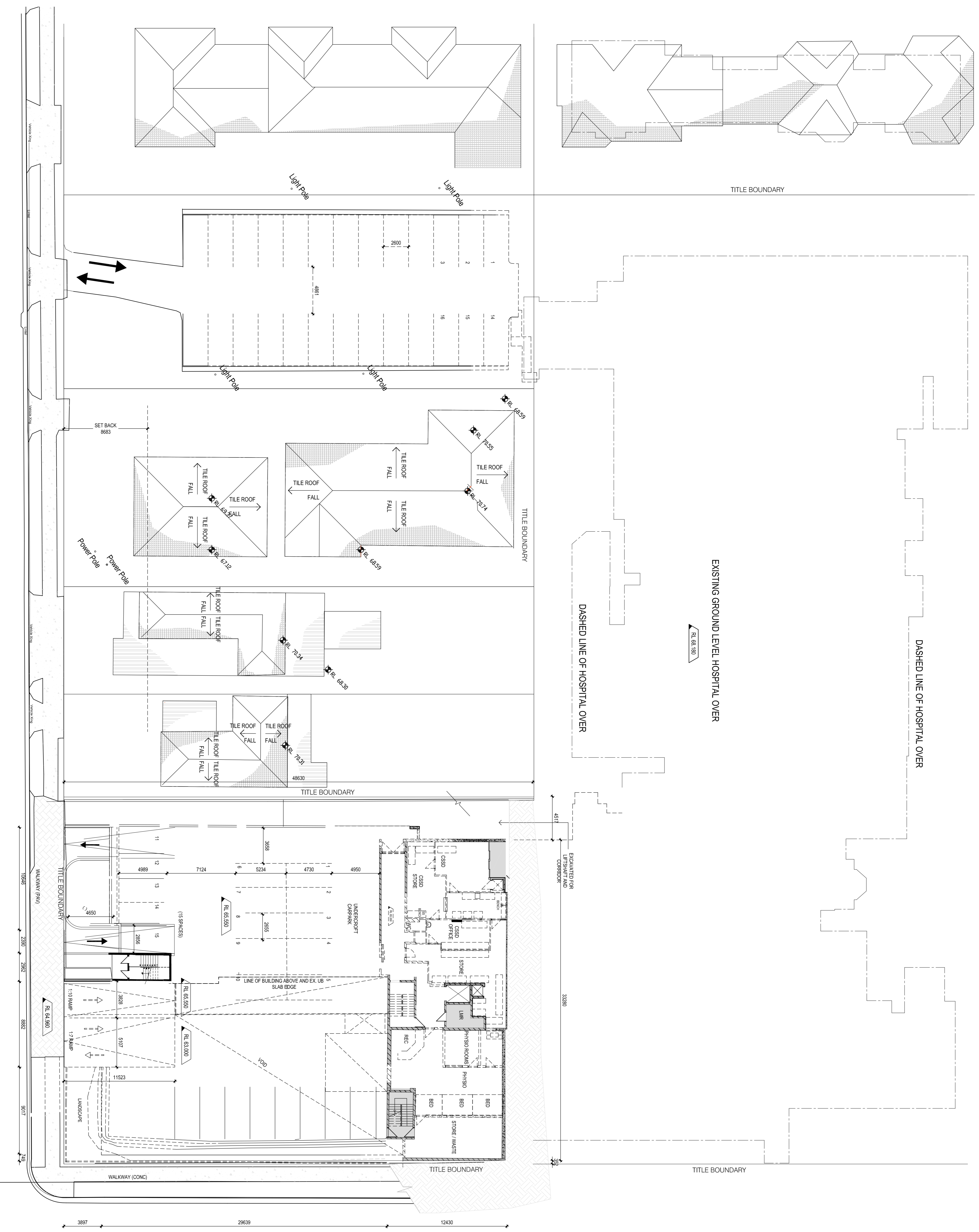


DASHED LINE OF HOSPITAL OVER

# LEGEND

-  TO BE DEMOLISHED
-  EXISTING WALLS
-  BUILDING ABOVE

**NOTE:**  
EXISTING CARPARK LINES  
ARE TO BE RELINED FOR  
PROPOSED CAR PARK LAYOUT



ISSUE REFERENCE	ISSUE DESCRIPTION	DATE
A	ISSUE FOR DEVELOPMENT APPROVAL USE	31/08/12
B	CHANGES TO PLAN	08/02/13
C	COMPLETION OF PLAN	08/10/13
D	ISSUE FOR APPROVAL	09/10/14

ISSUE REFERENCE	ISSUE DESCRIPTION	DATE
A	ISSUE FOR DEVELOPMENT APPROVAL USE	31/08/12
B	CHANGES TO PLAN	08/02/13
C	COMPLETION OF PLAN	08/10/13
D	ISSUE FOR APPROVAL	09/10/14

CONSULTANTS:

**healthcare**

**health science**

PLANNING CONSULTANTS

**MELBOURNE**

Level 6, 81 Bouverie Street  
Melbourne VIC Australia 3000  
TEL: (03) 9823 5234  
FAX: (03) 9823 5234  
http://www.healthscience.com.au  
Email: info@healthscience.com.au  
ACN: 54 000 195 770  
A/CN: 54 000 195 770

**SYDNEY**

Level 6, 81 Bouverie Street  
Melbourne VIC Australia 3000  
TEL: (03) 9823 5234  
FAX: (03) 9823 5234  
http://www.healthscience.com.au  
Email: info@healthscience.com.au  
ACN: 54 000 195 770  
A/CN: 54 000 195 770

**REASON FOR ISSUE:**  
#4663 MP 11\_0042 - MOD2

**PROJECT:**  
HURSTVILLE PRIVATE HOSPITAL

**TITLE:**  
DEMOLITION PLAN-  
UPPER BASEMENT

**DRAWING No:**  
DA-21

**SCALE:**  
1:200 @ A1

**PROJECT No:**  
40-1076

**REV:**  
D