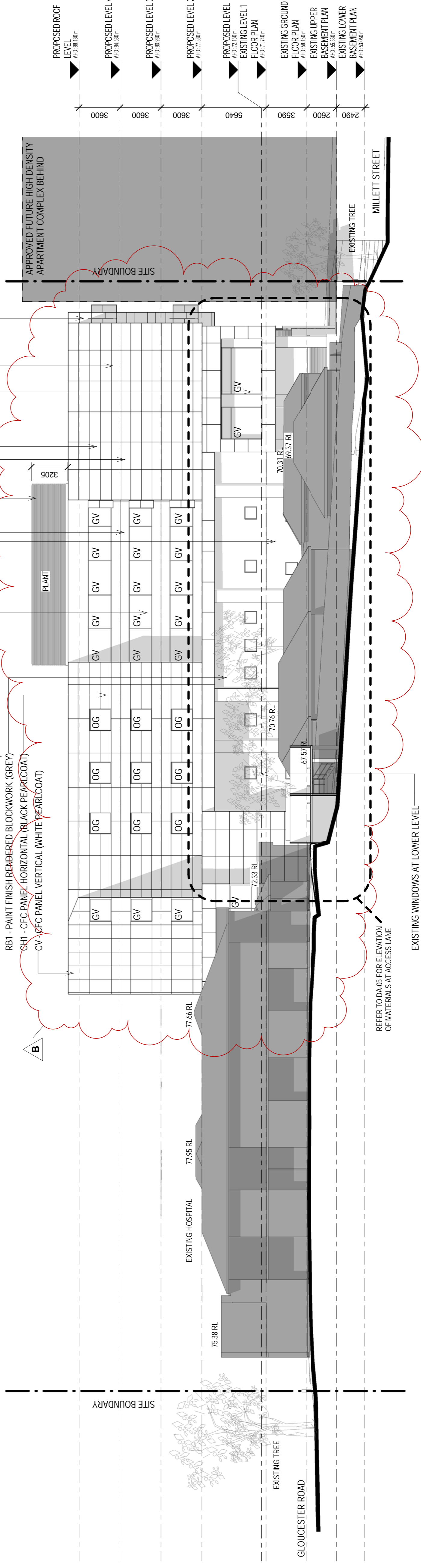


1 PEARL STREET - ELEVATION  
DA-32  
Scale 1:200

- AL2 - COMPOSITE ALUMINIUM PANEL (DARK GREY METALLIC)
- CH2 - CFC PANEL HORIZONTAL (WHITE PEARLCOAT)
- CH1 - CFC PANEL HORIZONTAL (BLACK PEARLCOAT)
- PC2 - INTERPON POWDERCOAT (ANODIC NATURAL)
- GV - VISION GLASS
- RB2 - PAINT FINISH RENDERED BLOCKWORK (WHITE)
- CV - CFC PANEL VERTICAL (WHITE PEARLCOAT)
- COMPOSITE ALUMINIUM PANEL (RED)

- AL1 - COMPOSITE ALUMINIUM PANEL (RED)
- AL3 - COMPOSITE ALUMINIUM PANEL (BRILLIANT METALLIC)
- BALCONY AND WINDOW ON GROUND AND LEVEL 1 EXISTING
- GV - VISION GLASS
- AL2 - COMPOSITE ALUMINIUM PANEL (DARK GREY METALLIC)
- PC2 - INTERPON POWDERCOAT (ANODIC NATURAL)
- AL3 - COMPOSITE ALUMINIUM PANEL (BRILLIANT METALLIC)
- RB3 - PAINT FINISH RENDERED BLOCKWORK (RED)
- OVERLOCKING ADDRESSED BY PLACING CIRCULATION CORRIDOR ON PERIMETER INSTEAD OF BEDROOMS AND OFFICES
- RBT - PAINT FINISH RENDERED BLOCKWORK (GREY)
- GH1 - CFC PANEL HORIZONTAL (BLACK PEARLCOAT)
- CV - CFC PANEL VERTICAL (WHITE PEARLCOAT)



2 NORTH-EAST ELEVATION  
DA-32  
Scale 1:200

LEGEND
EXISTING CONDITIONS
COLOURED FACADE PANEL
SHADOW

ISSUE REVISION	DN	CHK/APP DATE	DN	CHK/APP DATE
8	ISSUE FOR DEVELOPMENT APPROVAL	MS	DN	20.08.18
7	DA AMENDMENTS	DC	NS	11.02.13

CONSULTANTS:

healthcare

health science  
PLANNING CONSULTANTS

**MELBOURNE**  
Level 1, 525 Flinders Street  
Melbourne VIC  
Australia 3000 2333  
FAX: (03) 9923 2334  
http://www.hspc.com.au  
Email: info@hspc.com.au  
ACN: 050 195 170

**SYDNEY**  
Level 6, 61 Market Street  
Sydney NSW Australia 2000  
TEL: (02) 8289 5777  
FAX: (02) 8286 3745  
Australia 2000 2333  
Email: info@hspon.com.au  
ACN: 905 016 836

REASON FOR ISSUE:  
PROJECT APPLICATION

PROJECT:  
HURSTVILLE PRIVATE HOSPITAL

TITLE:  
PROPOSED ELEVATIONS  
SHEET 2

DRAWING No:

DA-41

NORTH

SCALE:  
1:200 @ A1

PROJECT No:  
40-1076

REV:  
B

THE CONTRACTOR MUST VERIFY ALL DIMENSIONS ON SITE BEFORE COMMENCING ANY WORK OR MAKING UP OF ANY SHOP DRAWINGS. FIGURED ALL SCALED DIMENSIONS MUST BE OBTAINED ON SITE. THE DRAWINGS ARE COPYRIGHT AND REMAIN THE PROPERTY OF THE ARCHITECT.