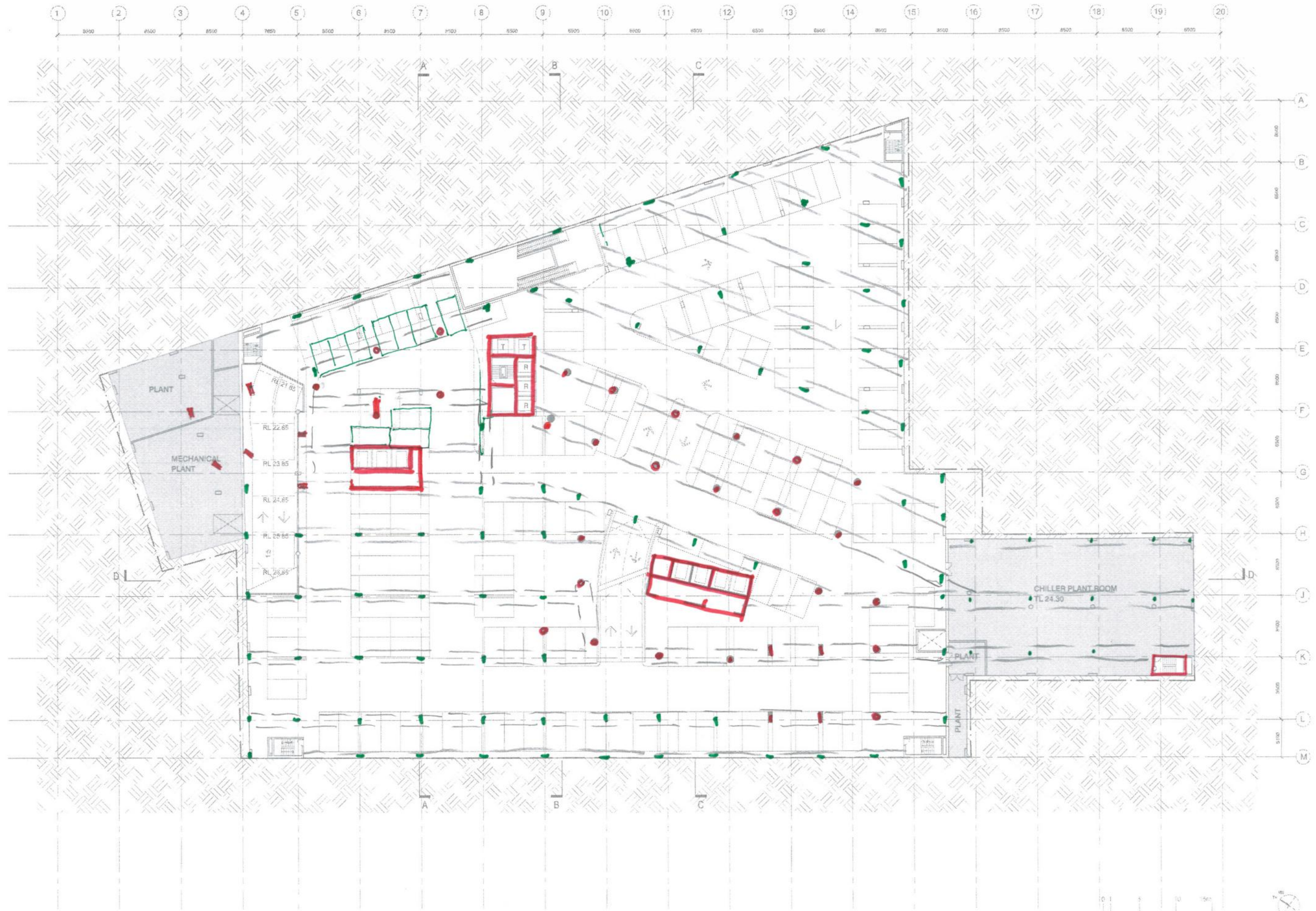
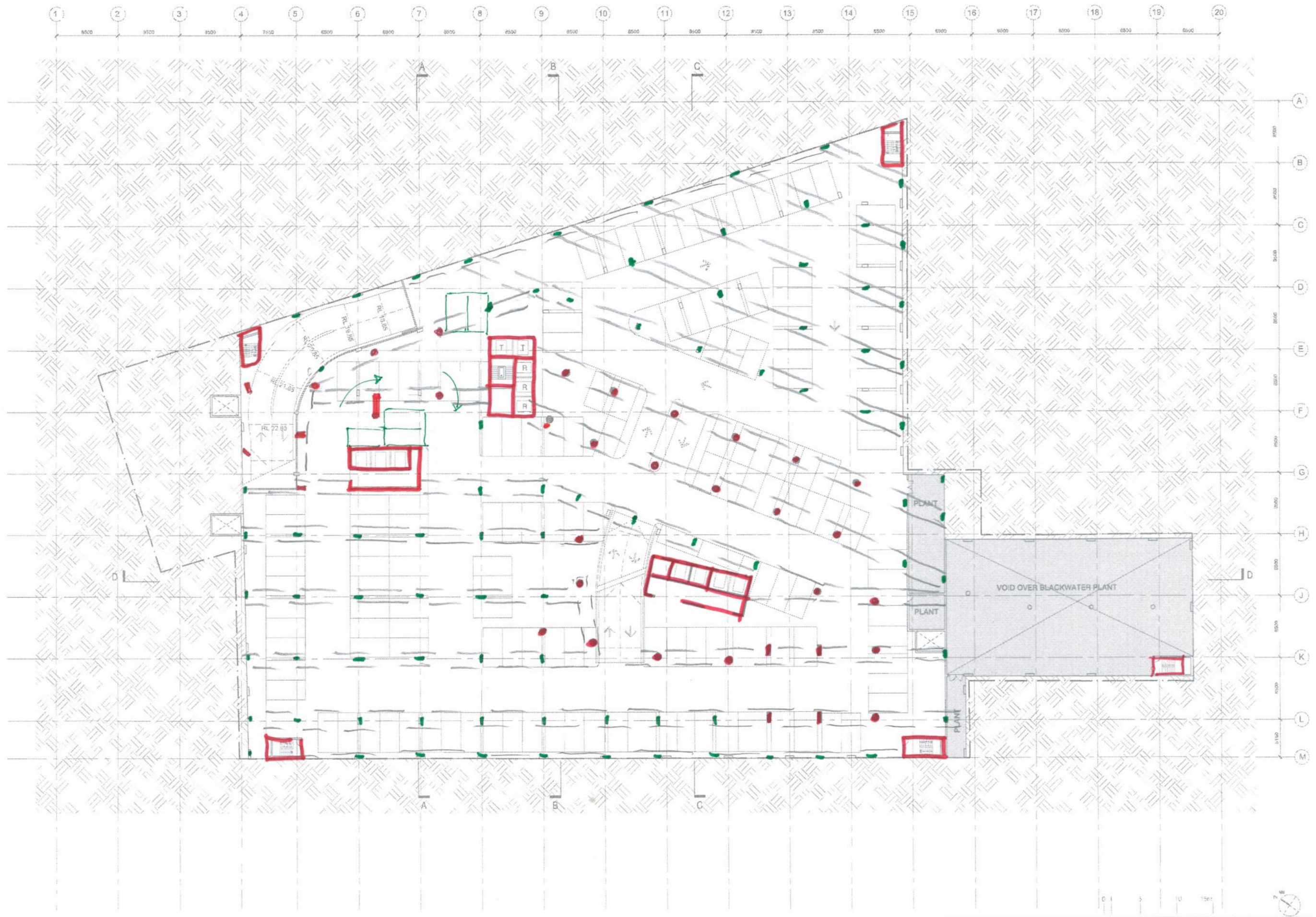


SLAB : 150 (CARPARKING)
 200 (PLANT)
 BEAM : 500 x 240 (CARPARKING)
 450 x 240 (PLANT)
 COLUMNS / CORES : AS PER B1

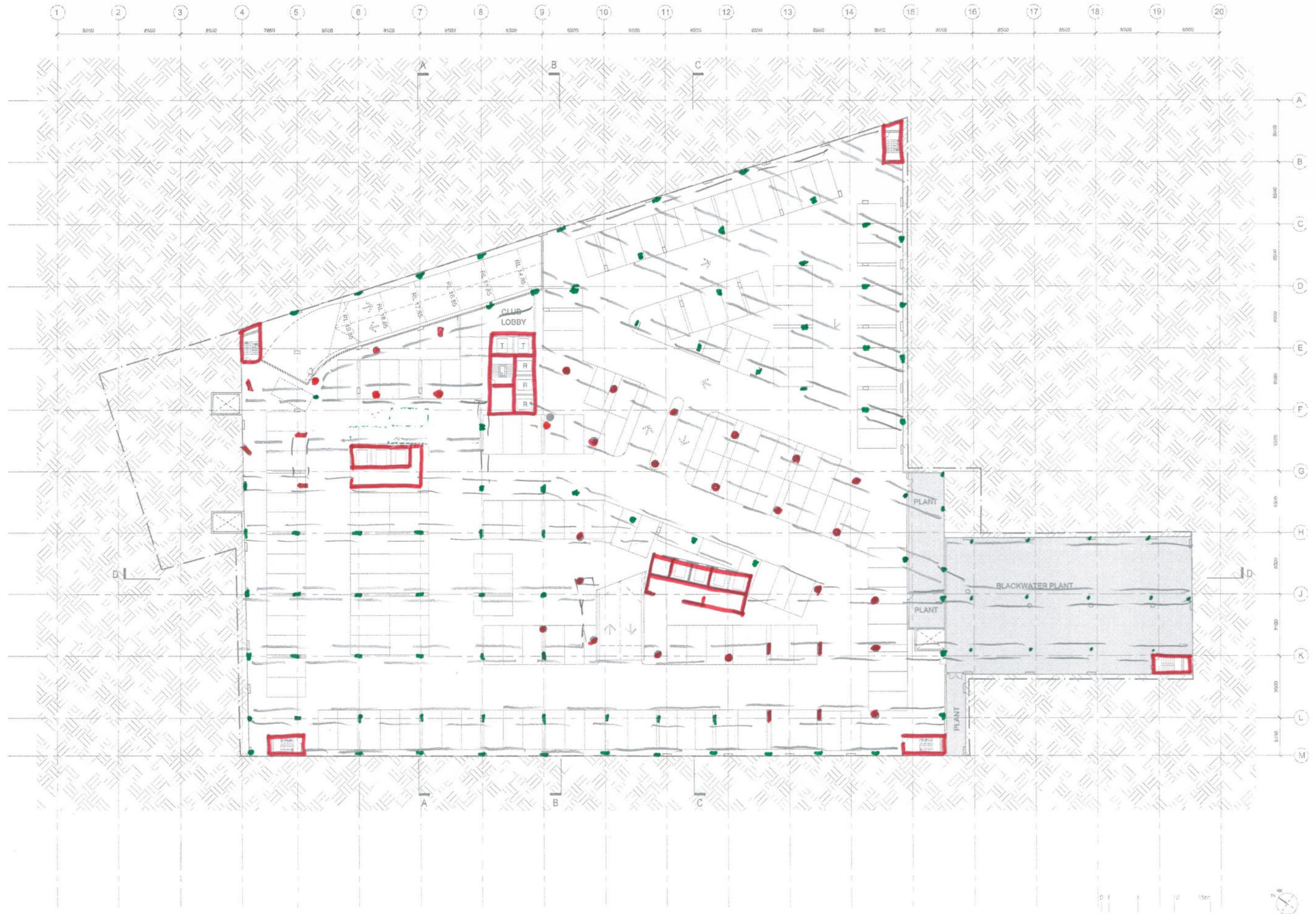
Do not scale from drawings. Verify all dimensions on site before commencing work. Copying or the reproduction of this drawing is strictly prohibited without the consent of PTW. Stanley Architects PTW and PTW Architects P/L.	<table border="1"> <tr> <th>Revision</th> <th>Description</th> <th>Date</th> </tr> <tr> <td>07</td> <td>preliminary issue for coordination</td> <td>25.10.2011</td> </tr> <tr> <td>08</td> <td>services update</td> <td>31.10.2011</td> </tr> <tr> <td>09</td> <td>parking update</td> <td>04.11.2011</td> </tr> <tr> <td>10</td> <td>altered to suit access & bike deletion</td> <td>11.11.2011</td> </tr> <tr> <td>11</td> <td>update from Fire & Life Safety review</td> <td>17.11.2011</td> </tr> <tr> <td>12</td> <td>update from services update</td> <td>22.11.2011</td> </tr> <tr> <td>13</td> <td>preliminary update for coordination</td> <td>22.11.2011</td> </tr> <tr> <td>14</td> <td>for coordination</td> <td>18.01.2012</td> </tr> </table>	Revision	Description	Date	07	preliminary issue for coordination	25.10.2011	08	services update	31.10.2011	09	parking update	04.11.2011	10	altered to suit access & bike deletion	11.11.2011	11	update from Fire & Life Safety review	17.11.2011	12	update from services update	22.11.2011	13	preliminary update for coordination	22.11.2011	14	for coordination	18.01.2012	<table border="1"> <tr> <th>Revision</th> <th>Description</th> <th>Date</th> </tr> <tr> <td></td> <td></td> <td></td> </tr> </table>	Revision	Description	Date				<table border="1"> <tr> <th>Client</th> <th>Contract / Design Architect</th> <th>Design Documentation Architect</th> <th>Drawing</th> <th>Project</th> </tr> <tr> <td>Rozelle Village Pty Limited</td> <td>Stanley Associates Architects</td> <td>PTW Architects</td> <td></td> <td></td> </tr> <tr> <td>Level: 17/115 Pitt St Sydney NSW Australia 2000</td> <td>Level: 345 Kent St Sydney NSW Australia 2000 T: +61 2 9250 7871 F: +61 2 9299 7872 www.stanley.com.au</td> <td>Level: 17, v Coalbrook St Sydney NSW Australia 2000 T: +61 2 9250 5877 F: +61 2 9251 4159 www.ptw.com.au</td> <td> DRAWN: LJR CHECKED: DH </td> <td> PROJECT NO: 010-009-00 SCALE: 1:500 (A1) DATE: 4x Rev </td> </tr> </table>	Client	Contract / Design Architect	Design Documentation Architect	Drawing	Project	Rozelle Village Pty Limited	Stanley Associates Architects	PTW Architects			Level: 17/115 Pitt St Sydney NSW Australia 2000	Level: 345 Kent St Sydney NSW Australia 2000 T: +61 2 9250 7871 F: +61 2 9299 7872 www.stanley.com.au	Level: 17, v Coalbrook St Sydney NSW Australia 2000 T: +61 2 9250 5877 F: +61 2 9251 4159 www.ptw.com.au	DRAWN: LJR CHECKED: DH	PROJECT NO: 010-009-00 SCALE: 1:500 (A1) DATE: 4x Rev
Revision	Description	Date																																																	
07	preliminary issue for coordination	25.10.2011																																																	
08	services update	31.10.2011																																																	
09	parking update	04.11.2011																																																	
10	altered to suit access & bike deletion	11.11.2011																																																	
11	update from Fire & Life Safety review	17.11.2011																																																	
12	update from services update	22.11.2011																																																	
13	preliminary update for coordination	22.11.2011																																																	
14	for coordination	18.01.2012																																																	
Revision	Description	Date																																																	
Client	Contract / Design Architect	Design Documentation Architect	Drawing	Project																																															
Rozelle Village Pty Limited	Stanley Associates Architects	PTW Architects																																																	
Level: 17/115 Pitt St Sydney NSW Australia 2000	Level: 345 Kent St Sydney NSW Australia 2000 T: +61 2 9250 7871 F: +61 2 9299 7872 www.stanley.com.au	Level: 17, v Coalbrook St Sydney NSW Australia 2000 T: +61 2 9250 5877 F: +61 2 9251 4159 www.ptw.com.au	DRAWN: LJR CHECKED: DH	PROJECT NO: 010-009-00 SCALE: 1:500 (A1) DATE: 4x Rev																																															



Revision	Revision	Client	Concept - Design Architect	Design Documentation Architect	Drawing	Project			
07	preliminary issue for coordination	26.10.2011	Rozelle Village Pty Limited	PTW Architects	DRAWN	LJR	PROJ NO.	010.000.00	Rozelle Village Victoria Road, Darling Street and Waterloo Street, Rozelle NSW Australia
08	service room update	31.10.2011	Level 17/110 Pitt St Sydney NSW Australia 2000	Level 5, 346 Kent St Sydney NSW Australia 2000 T: 61 2 9290 7871 F: 61 2 9299 7872 www.ptw.com.au	CHECKED	DH	SCALE	1:200 (A1)	
09	parking update	04.11.2011		Level 17, 4 Coalbrook St Sydney NSW Australia 2000 T: 61 2 9290 7877 F: 61 2 9291 4139 www.ptw.com.au	DATE		A1 Rev		
10	alter to suit cinema & bit deletion	11.11.2011							
11	update from Fire & Life Safety review	17.11.2011							
12	update from services review	22.11.2011							
13	preliminary issue for coordination	22.11.2011							
14	for coordination	18.01.2012							
Do not scale from drawings, verify all dimensions on site before commencing work. Copying or the reproduction of this drawing or sheet, provided without the consent of PTW Architects, Architects P/L and PTW Architects P/L.							BASEMENT 4 PLAN RL 24.30		PA 104/ 14



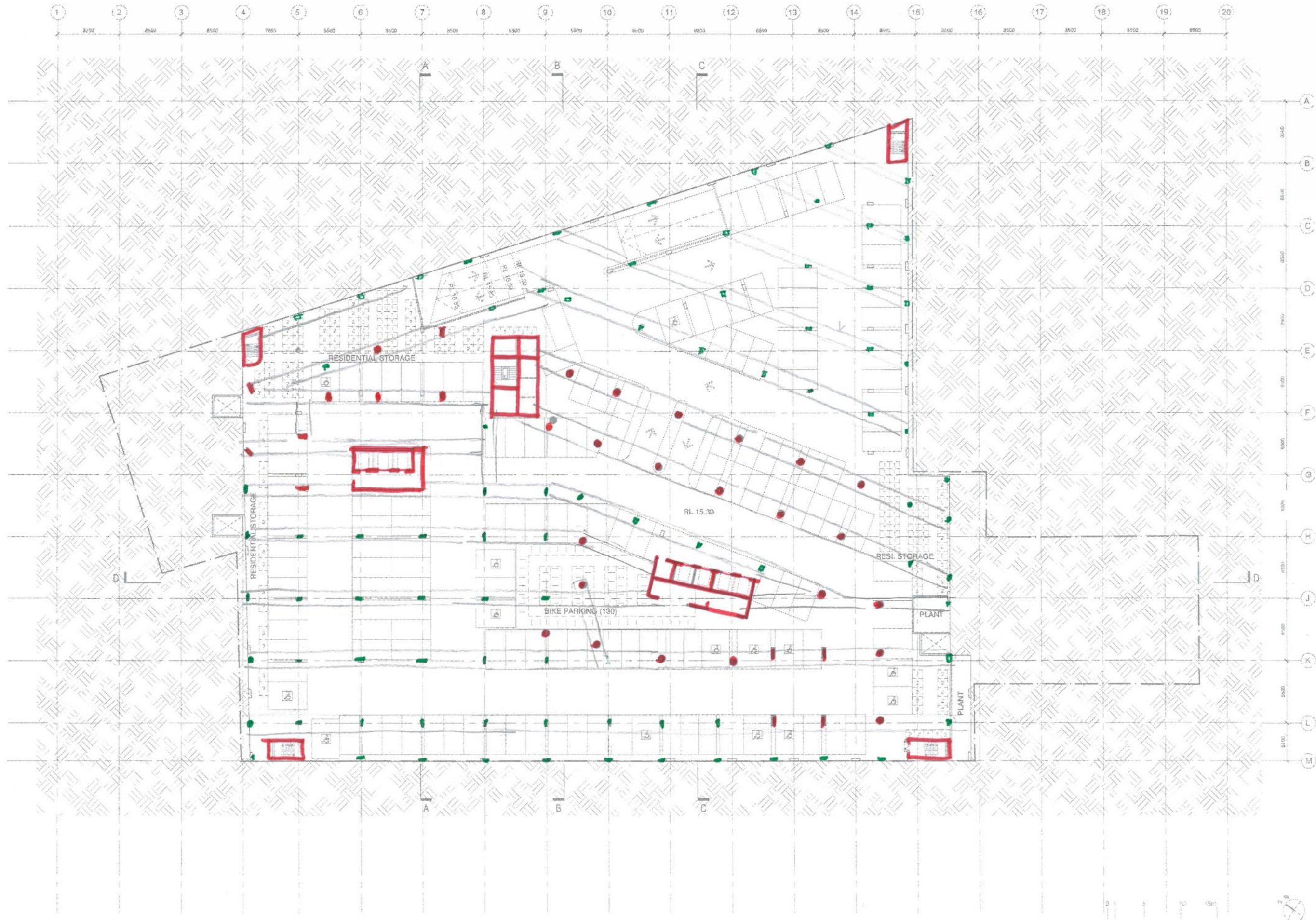
Revision	Revision	Client	Consult - Design Architect	Design Documentation Architect	Drawing	Project
07 08 09 10 11 12 13 14	26.10.2011 31.10.2011 04.11.2011 11.11.2011 17.11.2011 22.11.2011 18.01.2012	Rozelle Village Pty Limited Level 17/15 Pitt St Sydney NSW Australia 2000	Level 5, 345 Kent St Sydney NSW Australia 2000 T + 61 2 9210 7871 F + 61 2 9299 7972 www.stanish.com.au	Level 17, 4 Castle St Sydney NSW Australia 2000 T + 61 2 9232 5677 F + 61 2 9231 4139 www.ptw.com.au	PTW DRAWN: LJR CHECKED: DH PROJ. NO.: 210.006.00 SCALE: 1:300 (A1) DATE: 04 Feb	Rozelle Village Vittoria Road, Darling Street and Valencia Street, Rozelle NSW Australia PA 105/ 14
<p>Do not scale from drawings with all dimensions on site before commencing work. Copying or the reproduction of this drawing is strictly prohibited without the consent of Fire & Stanish Architects Pty Ltd and PTW Architects Pty Ltd.</p>						<p>BASEMENT 5 PLAN RL 21.30</p>



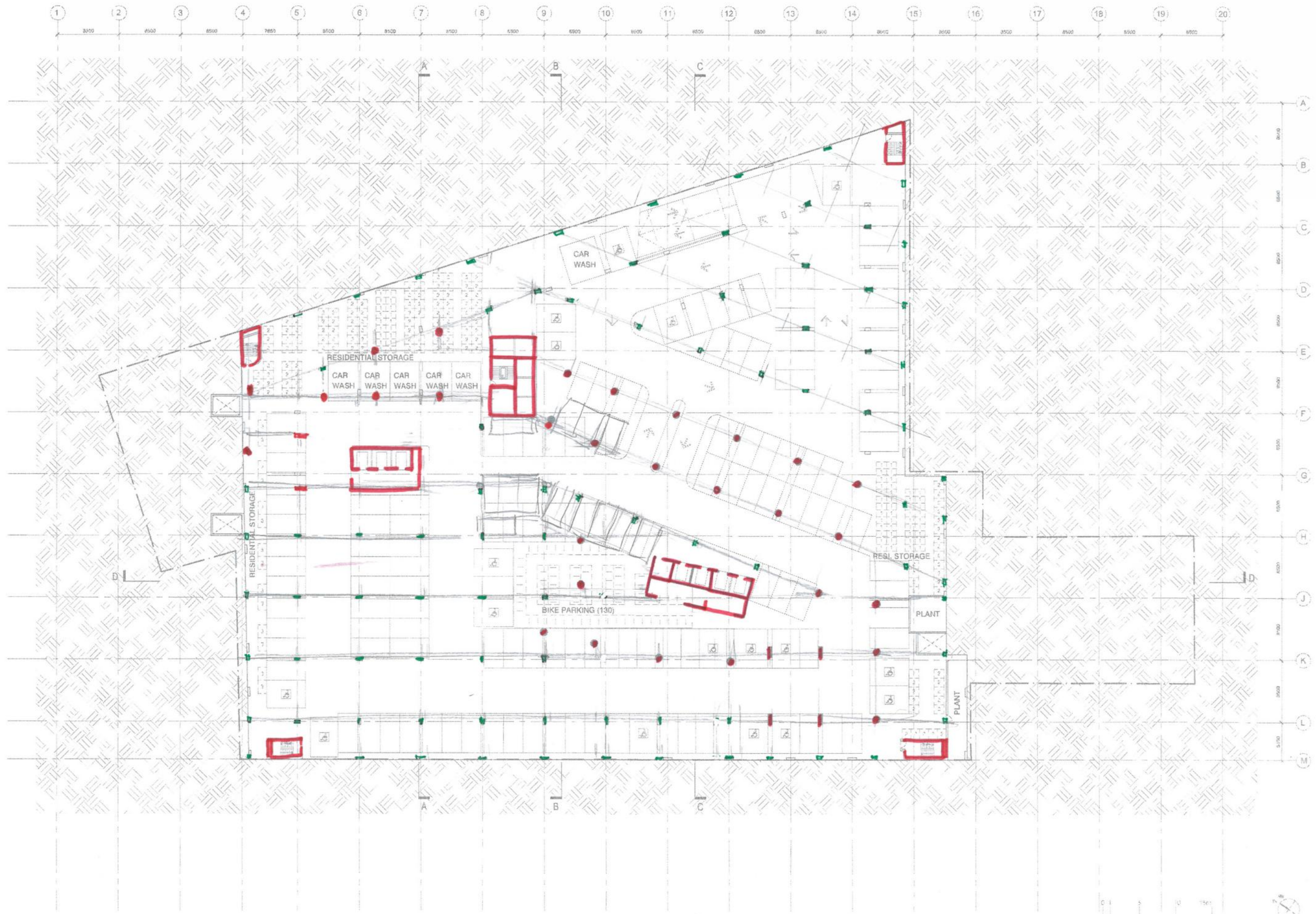
Revision	Revision	Client	Contract - Design Architect	Design Documentation Architect	Drawing	Project
07 preliminary issue for coordination	25.10.2011	Rozelle Village Pty Limited	Stanbic Associates Architects	PTW Architects	DRAWN: LJR	Rozelle Village
08 inc services & ESD input	31.10.2011	Level 17/116 Pitt St	Level 5, 346 Kent St	Sydney NSW Australia 1600	FROM NO. 216,000.00	Victoria Road, Darling Street and
09 parking update	04.11.2011	Sydney NSW Australia 2009	Tel: 612 9290 7871	Sydney NSW Australia 1600	SCALE 1:350 @ A1	Victoria Street,
10 altered to suit cinema & bit deletion	11.11.2011		F: 612 9290 7871	Level 17, 4 Castlereagh St	DATE 4-Nov	Rozelle NSW Australia
11 update from Fire & Life Safety review	17.11.2011		P: 612 9290 7871	Sydney NSW Australia 1600		
12 update from services review	22.11.2011		www.stanbic.com.au	Tel: 612 9290 7871		
13 preliminary issue for coordination	22.11.2011			F: 612 9290 7871		
14 for coordination	18.01.2012			P: 612 9290 7871		

BASEMENT 6 PLAN
RL 18.30

PA 106 /14

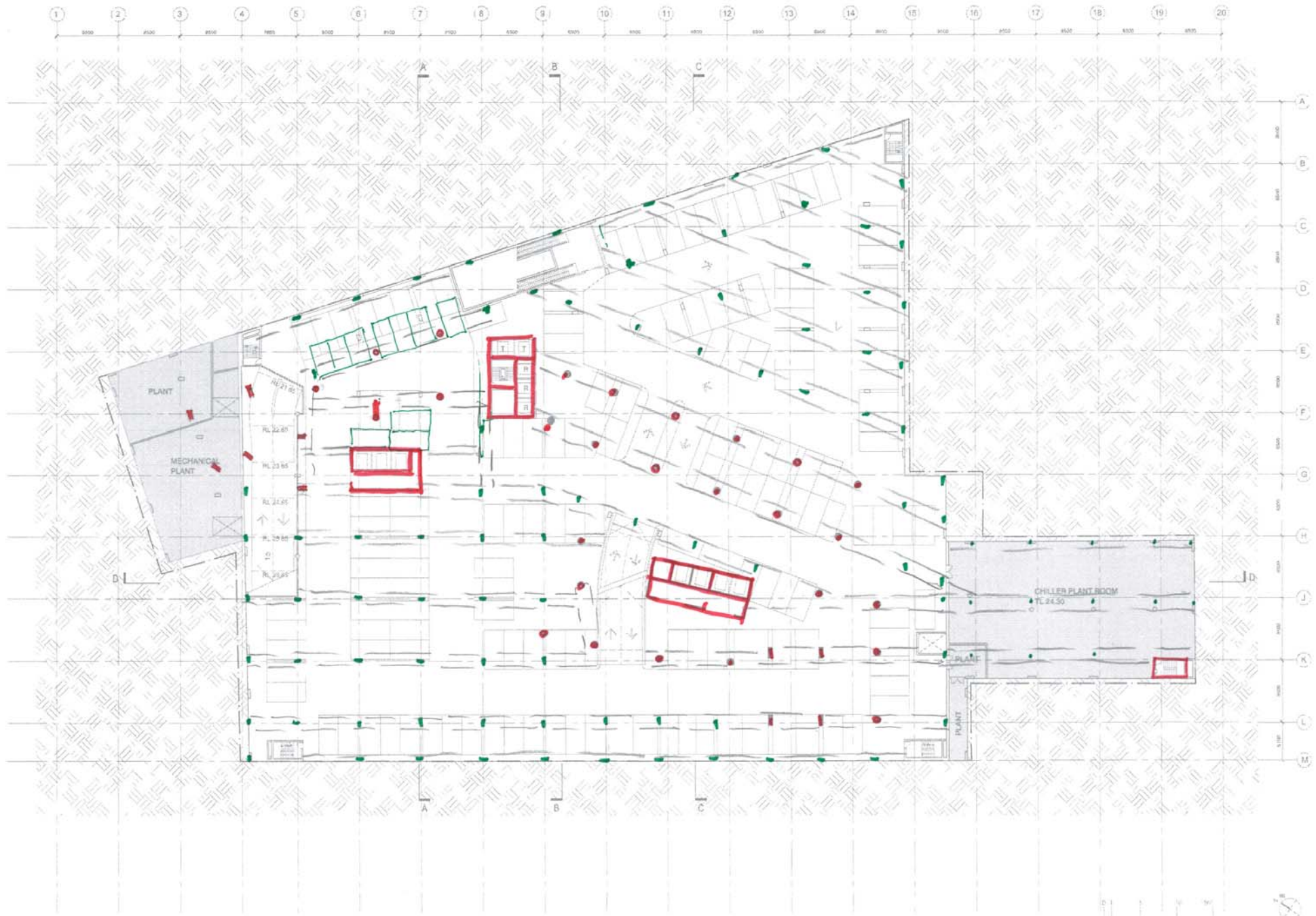


<p>Do not scale from drawings. Verify all dimensions on site before commencing work. Copying or the reproduction of this drawing is strictly prohibited without the consent of Frank Stanisko Architects P/L and PTW Architects P/L.</p>	<table border="1"> <thead> <tr> <th>Revision</th> <th>Description</th> <th>Date</th> </tr> </thead> <tbody> <tr> <td>07</td> <td>preliminary issue for coordination</td> <td>26.10.2011</td> </tr> <tr> <td>08</td> <td>service room update</td> <td>31.10.2011</td> </tr> <tr> <td>09</td> <td>parking update</td> <td>04.11.2011</td> </tr> <tr> <td>10</td> <td>altered to suit cinema & b5 deletion</td> <td>11.11.2011</td> </tr> <tr> <td>11</td> <td>update from Fire & Life Safety review</td> <td>17.11.2011</td> </tr> <tr> <td>12</td> <td>update from services review</td> <td>22.11.2011</td> </tr> <tr> <td>14</td> <td>for coordination</td> <td>18.01.2012</td> </tr> </tbody> </table>	Revision	Description	Date	07	preliminary issue for coordination	26.10.2011	08	service room update	31.10.2011	09	parking update	04.11.2011	10	altered to suit cinema & b5 deletion	11.11.2011	11	update from Fire & Life Safety review	17.11.2011	12	update from services review	22.11.2011	14	for coordination	18.01.2012	<table border="1"> <thead> <tr> <th>Client</th> <th>Contact + Design Architect</th> <th>Design Documentation Architect</th> </tr> </thead> <tbody> <tr> <td>Rozelle Village Pty Limited</td> <td>Frank Stanisko Architects Level 5, 245 Kent St Sydney NSW Australia 2000 T 612 9220 7871 F 612 9299 7872 www.stanisko.com.au</td> <td>PTW Architects Level 17, 4 Cadzowagh St Sydney NSW Australia 2000 T 612 9222 5877 F 612 9221 4129 www.ptw.com.au</td> </tr> </tbody> </table>	Client	Contact + Design Architect	Design Documentation Architect	Rozelle Village Pty Limited	Frank Stanisko Architects Level 5, 245 Kent St Sydney NSW Australia 2000 T 612 9220 7871 F 612 9299 7872 www.stanisko.com.au	PTW Architects Level 17, 4 Cadzowagh St Sydney NSW Australia 2000 T 612 9222 5877 F 612 9221 4129 www.ptw.com.au	<table border="1"> <thead> <tr> <th>Drawing</th> <th>Project</th> </tr> </thead> <tbody> <tr> <td>DRAWN: LJR CHECKED: DH</td> <td>Rozelle Village Victoria Road, Darling Street and Waterloo Street, Rozelle NSW Australia</td> </tr> </tbody> </table>	Drawing	Project	DRAWN: LJR CHECKED: DH	Rozelle Village Victoria Road, Darling Street and Waterloo Street, Rozelle NSW Australia	<p>PROJ NO: 216,006.00 SCALE: 1:300 (A1) DATE: 4/1/12</p> <p>PTW</p> <p>BASEMENT 7 PLAN RL 15.30</p> <p>PA 107/ 14</p>
Revision	Description	Date																																				
07	preliminary issue for coordination	26.10.2011																																				
08	service room update	31.10.2011																																				
09	parking update	04.11.2011																																				
10	altered to suit cinema & b5 deletion	11.11.2011																																				
11	update from Fire & Life Safety review	17.11.2011																																				
12	update from services review	22.11.2011																																				
14	for coordination	18.01.2012																																				
Client	Contact + Design Architect	Design Documentation Architect																																				
Rozelle Village Pty Limited	Frank Stanisko Architects Level 5, 245 Kent St Sydney NSW Australia 2000 T 612 9220 7871 F 612 9299 7872 www.stanisko.com.au	PTW Architects Level 17, 4 Cadzowagh St Sydney NSW Australia 2000 T 612 9222 5877 F 612 9221 4129 www.ptw.com.au																																				
Drawing	Project																																					
DRAWN: LJR CHECKED: DH	Rozelle Village Victoria Road, Darling Street and Waterloo Street, Rozelle NSW Australia																																					



<p>Do not scale from drawings, verify all dimensions on site before commencing work. Copying or the reproduction of this drawing is strictly prohibited without the consent of Franks Services Architects P/L and PTW Architects P/L.</p>	<p>Revision</p>	<p>Revision</p>	<p>Client</p>	<p>Concept + Design Architect</p>	<p>Design Documentation Architect</p>	<p>Drawing</p>	<p>Project</p>
	<p>14 preliminary issue for coordination</p>	<p>19.01.2010</p>	<p>Rozelle Village Pty Limited Level 17/115 Pitt St Sydney NSW Australia 2000</p>	<p>Level 3, 346 Kent St Sydney NSW Australia 2000 T 612 9290 7871 F 612 9296 7572 www.stanbic.com.au</p>	<p>Level 17, 115 Castle St Sydney NSW Australia 2000 T 612 9290 5977 F 612 9291 4159 www.ptw.com.au</p>	<p>PTW PTW ARCHITECTS</p>	<p>DRAWN: LJR CHECKED: DH PROJECT NO: 010,000.00 SCALE: 1:200 (A1) DATE: 4/1/09</p>

BASEMENT 8 PLAN
RL 12.30



Rev/Date	Description	Revision	Client	Contract / Design Address	Design Documentation Number	Drawing	Project
07	preliminary issue for coordination	26.10.2011	Rozelle Village Pty Limited	Contract - Design Address	PTW Architects	04/01	Rozelle Village
08	service room update	27.10.2011	Level 10/11 Pt E	Contract - Design Address	1/11 - 1/11	04/01	1/11 - 1/11
09	interior updates	04.11.2011	Grange North Australia 2000	Contract - Design Address	2/11 - 2/11	04/01	2/11 - 2/11
10	interior to suit cinema & 3D delivery	17.11.2011			3/11 - 3/11	04/01	3/11 - 3/11
11	update from Fire & Life Safety Review	17.11.2011			4/11 - 4/11	04/01	4/11 - 4/11
12	update from service review	22.11.2011			5/11 - 5/11	04/01	5/11 - 5/11
13	preliminary issue for coordination	22.11.2011			6/11 - 6/11	04/01	6/11 - 6/11
14	for coordination	19.01.2012			7/11 - 7/11	04/01	7/11 - 7/11

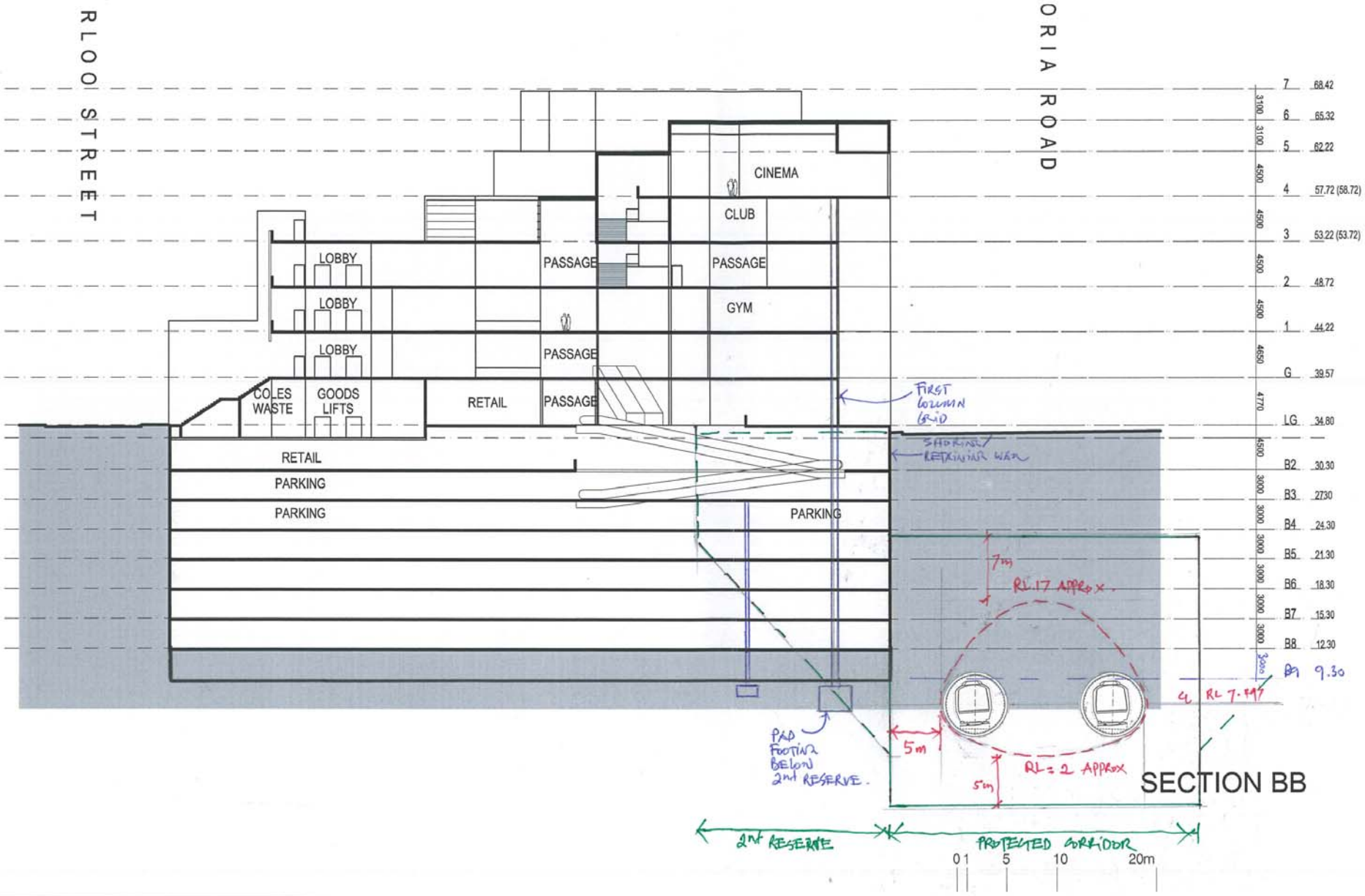
Rozelle Village
 1/11 - 1/11
 2/11 - 2/11
 3/11 - 3/11
 4/11 - 4/11
 5/11 - 5/11
 6/11 - 6/11
 7/11 - 7/11

PTW
 04/01
 05/01
 06/01
 07/01
 08/01
 09/01
 10/01
 11/01
 12/01
 13/01
 14/01
 15/01
 16/01
 17/01
 18/01
 19/01
 20/01

STANIC ASSOCIATES ARCHITECTS
 1/11 - 1/11
 2/11 - 2/11
 3/11 - 3/11
 4/11 - 4/11
 5/11 - 5/11
 6/11 - 6/11
 7/11 - 7/11
 8/11 - 8/11
 9/11 - 9/11
 10/11 - 10/11
 11/11 - 11/11
 12/11 - 12/11
 13/11 - 13/11
 14/11 - 14/11
 15/11 - 15/11
 16/11 - 16/11
 17/11 - 17/11
 18/11 - 18/11
 19/11 - 19/11
 20/11 - 20/11

Basement 4 Plan
 RL 24.30

04/01
 05/01
 06/01
 07/01
 08/01
 09/01
 10/01
 11/01
 12/01
 13/01
 14/01
 15/01
 16/01
 17/01
 18/01
 19/01
 20/01



SECTION BB

7	68.42
6	66.32
5	62.22
4	57.72 (58.72)
3	53.22 (53.72)
2	48.72
1	44.22
G	38.57
L.G.	34.80
B2	30.30
B3	27.30
B4	24.30
B5	21.30
B6	18.30
B7	15.30
B8	12.30
B9	9.30

