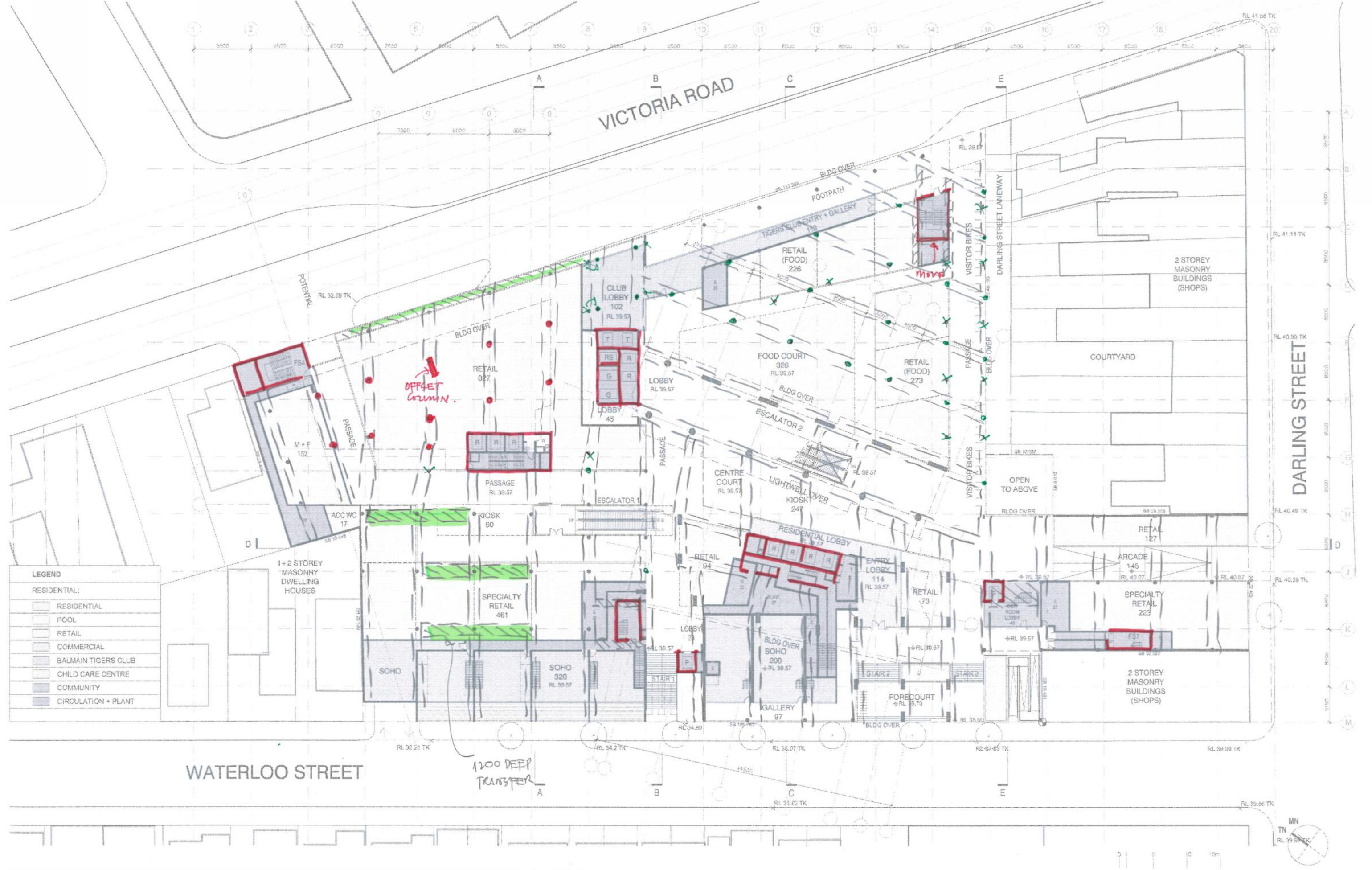

APPENDIX D

STRUCTURAL CONCEPT MARK-UPS



LEGEND

RESIDENTIAL:	
[Symbol]	RESIDENTIAL
[Symbol]	POOL
[Symbol]	RETAIL
[Symbol]	COMMERCIAL
[Symbol]	BALMAIN TIGERS CLUB
[Symbol]	CHILD CARE CENTRE
[Symbol]	COMMUNITY
[Symbol]	CIRCULATION + PLANT

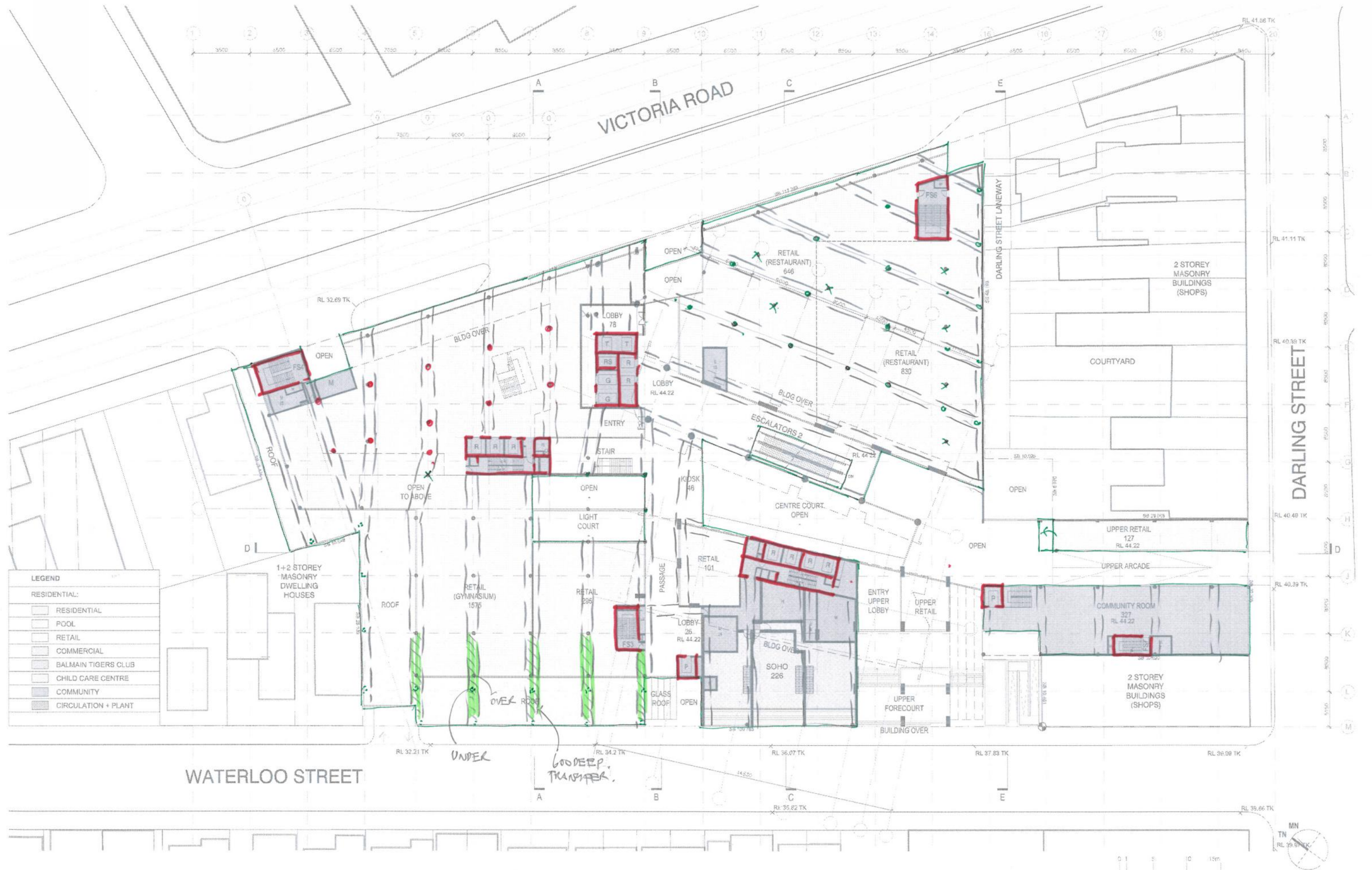
WATERLOO STREET

VICTORIA ROAD

DARLING STREET

<p>Do not scale from drawings verify all dimensions on site before commencing work. Copying or the reproduction of this drawing is strictly prohibited without the consent of Frank Stanic Architects P/L and PTW Architects P/L.</p>	<p>Revision 12 PRELIMINARY ISSUE FOR COORDINATION 17/01/12 Revision 13 PRELIMINARY ISSUE FOR COORDINATION 18/01/12 Revision 14 PRELIMINARY ISSUE FOR COORDINATION 20/01/12</p>	<p>Client Rozelle Village Pty Limited Level 17/115 Pitt St Sydney NSW Australia 2000 Telephone Facsimile e-mail</p>	<p>Contract - Design Architects  STANIC ASSOCIATES ARCHITECTS Level 5, 345 Kent St Sydney NSW Australia 2000 T 012 0290 7871 F 012 9299 7973 www.stanic.com.au</p>	<p>Design Documentation Architect PTW Architects  Level 17, 9 Castle St Sydney NSW Australia 2000 T 012 9232 6477 F 012 9231 4139 www.ptw.com.au</p>	<p>Drawing PROJECT: 11 009 SCALE: 1:250@A1 DATE: 29.01.12</p>	<p>Project Rozelle Village Victoria Road, Darling Street and Waterloo Street, Rozelle NSW Australia PA 110 14</p>
---	--	---	--	--	--	---

LEVEL GROUND PLAN
 RL 39.57

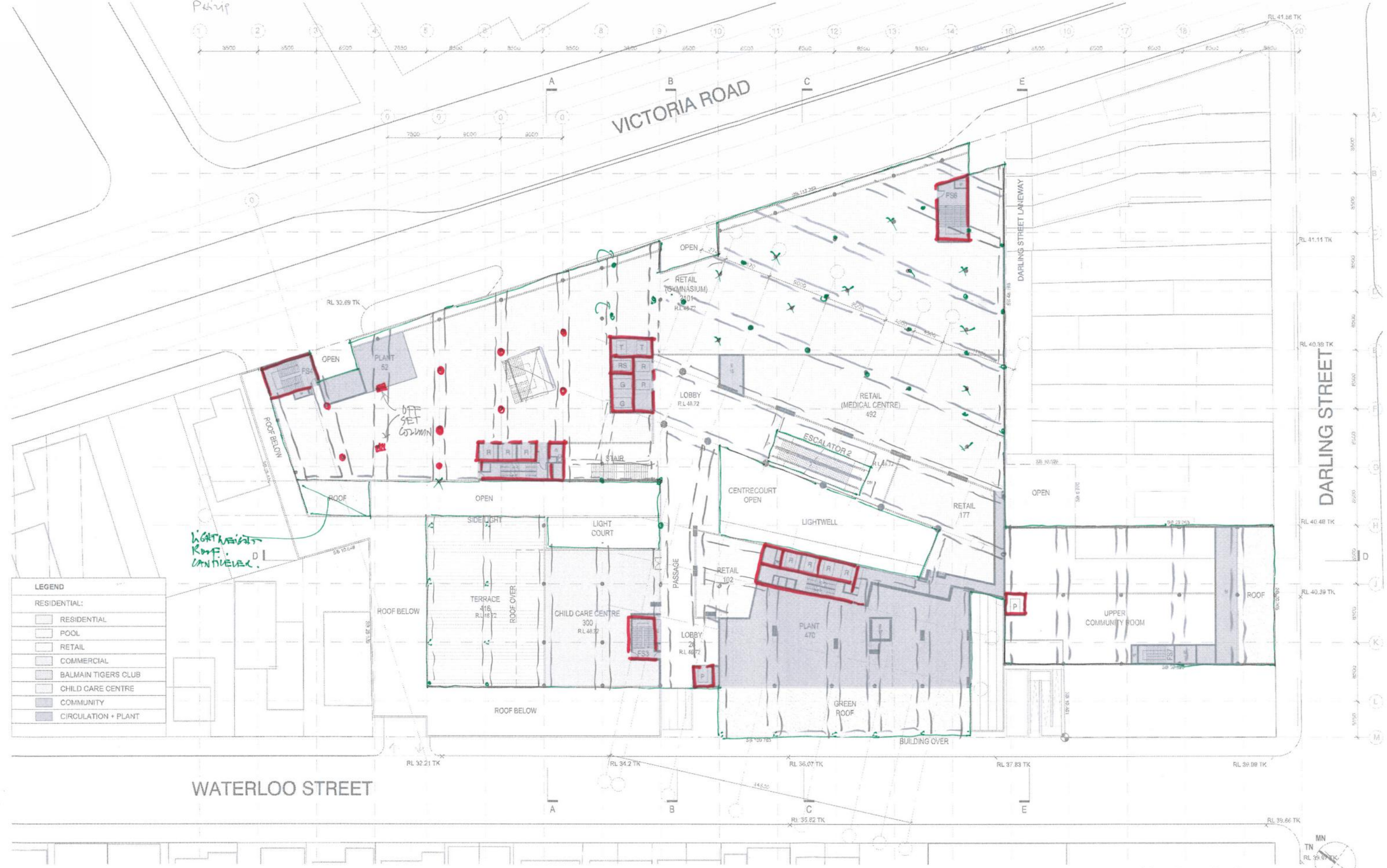


LEGEND

RESIDENTIAL:

- RESIDENTIAL
- POOL
- RETAIL
- COMMERCIAL
- BALMAIN TIGERS CLUB
- CHILD CARE CENTRE
- COMMUNITY
- CIRCULATION + PLANT

<p>Do not scale from drawings verify all dimensions on site before commencing work. Copying or the reproduction of the contents is strictly prohibited without the consent of Frank Stanic Architects P/L and PTW Architects P/L.</p>	<p>12 PRELIMINARY ISSUE FOR COORDINATION 17/01/12 13 PRELIMINARY ISSUE FOR COORDINATION 18/01/12 14 PRELIMINARY ISSUE FOR COORDINATION 20/01/12</p>	<p>Client Rozelle Village Pty Limited Level 3, 345 Kent St Sydney NSW Australia 2000 Telephone Facsimile email</p>	<p>Concept - Design Architect Level 3, 345 Kent St Sydney NSW Australia 2000 T 012 0290 7871 F 012 0299 7973 www.stanic.com.au</p>	<p>Design Documentation Architect PTW Architects Level 17, 9 Castle St Sydney NSW Australia 2000 T 012 0292 6477 F 012 0291 4109 www.ptw.com.au</p>	<p>Drawing PROJECT: 11 009 SCALE: 1:250 @ A1 DATE: 20.01.12</p>	<p>Project Rozelle Village Victoria Road, Darling Street and Waterloo Street Rozelle NSW Australia</p>
<p>LEVEL 1 PLAN RL 44.22</p>						<p>PA 111 14</p>



LEGEND

RESIDENTIAL:

- RESIDENTIAL
- POOL
- RETAIL
- COMMERCIAL
- BALMAIN TIGERS CLUB
- CHILD CARE CENTRE
- COMMUNITY
- CIRCULATION + PLANT

WATERLOO STREET

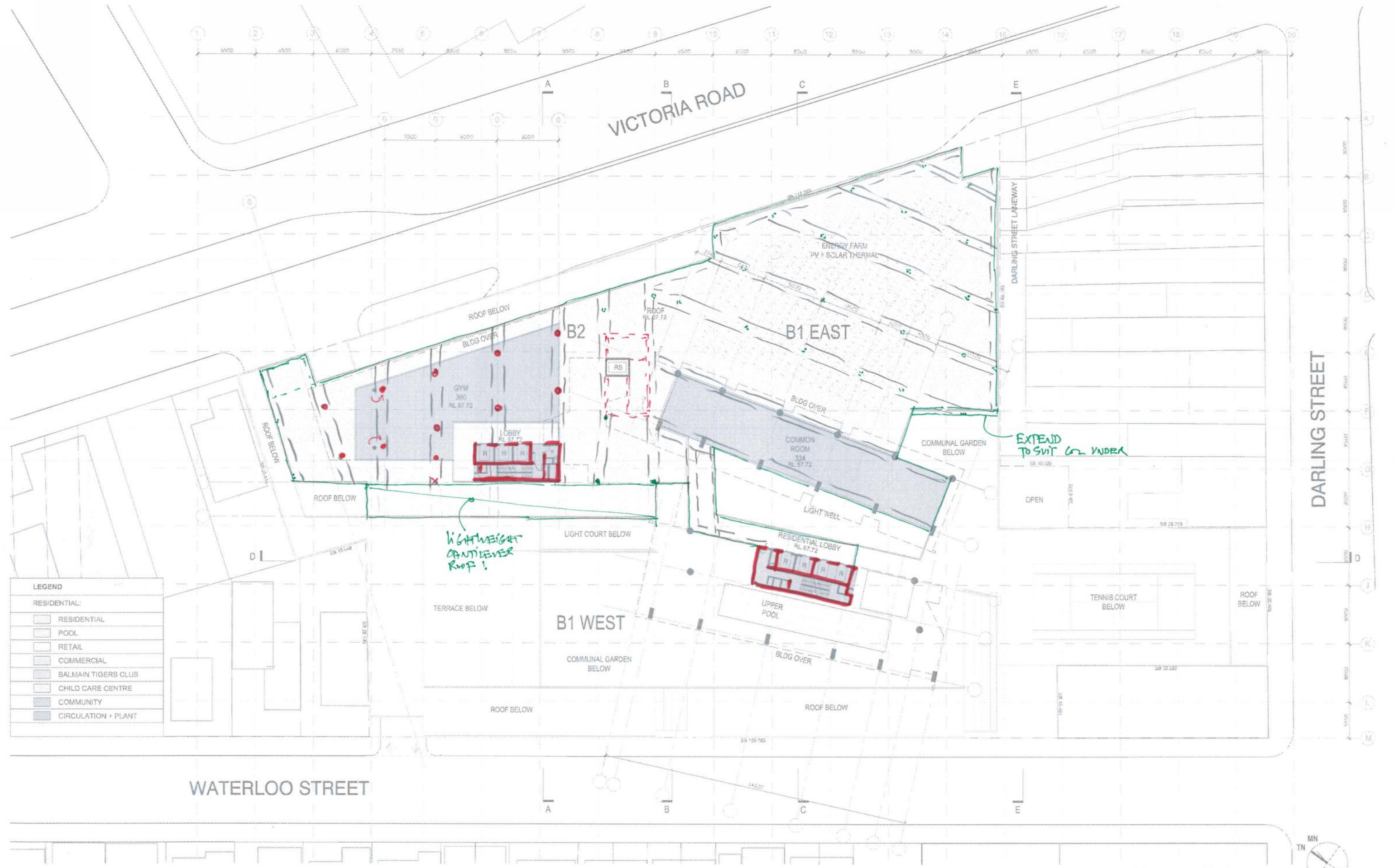
VICTORIA ROAD

DARLING STREET

Revision	Revision	Client	Contractor - Design Architect	Design Documentation Architect	Drawing	Project
12 PRELIMINARY ISSUE FOR COORDINATION 17/01/12	13 PRELIMINARY ISSUE FOR COORDINATION 18/01/12	Rozelle Village Pty Limited	STANISIC ASSOCIATES ARCHITECTS	PTW Architects	DRAWN: CHECKED:	Rozelle Village Victoria Road, Darling Street and Waterloo Street, Rozelle NSW Australia
14 PRELIMINARY ISSUE FOR COORDINATION 20/01/12		Level: 17/115 Pitt St, Sydney NSW Australia 2000 Telephone: Facsimile: e-mail:	Level: 3, 346 Kent St, Sydney NSW Australia 2000 T 012 0290 7871 F 012 0299 7973 www.stanisic.com.au	Level: 17, 9 Castle Street, Sydney NSW Australia 2000 T 012 0292 0477 F 012 0291 4139 www.ptw.com.au	PROJ NO: 11 009 SCALE: 1:250 @ A1 DATE: 20/01/12	PA 112 13

Do not scale from drawings verify all dimensions on site before commencing work. Copying or the reproduction of the drawing is strictly prohibited without the consent of Frank Stanisic Architects P/L and PTW Architects P/L

LEVEL 2 PLAN
RL 48.72



LEGEND

RESIDENTIAL:

- RESIDENTIAL
- POOL
- RETAIL
- COMMERCIAL
- BALMAIN TIGERS CLUB
- CHILD CARE CENTRE
- COMMUNITY
- CIRCULATION + PLANT

<p>Do not scale from drawings verify all dimensions on site before commencing work. Copying or the reproduction of this drawing is strictly prohibited without the consent of Frank Stanbic Architects P/L and PTW Architects P/L.</p>	<p>Revision</p> <table border="1" style="width: 100%; border-collapse: collapse;"> <tr> <td style="width: 33%;">12 PRELIMINARY ISSUE FOR COORDINATION</td> <td style="width: 33%;">17/01/12</td> </tr> <tr> <td>13 PRELIMINARY ISSUE FOR COORDINATION</td> <td>18/01/12</td> </tr> <tr> <td>14 PRELIMINARY ISSUE FOR COORDINATION</td> <td>20/01/12</td> </tr> </table>	12 PRELIMINARY ISSUE FOR COORDINATION	17/01/12	13 PRELIMINARY ISSUE FOR COORDINATION	18/01/12	14 PRELIMINARY ISSUE FOR COORDINATION	20/01/12	<p>Client</p> <p>Rozelle Village Pty Limited</p> <p>Level 12/115 Pitt St Sydney NSW Australia 2000 Telephone Facsimile e-mail</p>	<p>Concept - Design Architect</p> <p>SN STANBIC ASSOCIATES ARCHITECTS</p> <p>Level 3, 345 Kent St Sydney NSW Australia 2000 Tel: +61 2 9290 7871 Fax: +61 2 9299 7972 www.stanbic.com.au</p>	<p>Design Documentation Architect</p> <p>PTW Architects</p> <p>Level 17, 9 Castlereagh St Sydney NSW Australia 2000 Tel: +61 2 9232 6577 Fax: +61 2 9231 4139 www.ptw.com.au</p>	<p>Drawing</p> <p>DRAWN: PROJECT 11 009 CHECKED: SCALE 1:2500/A1 DATE 20/01/12</p>	<p>Project</p> <p>Rozelle Village Victoria Road, Darling Street and Waterloo Street, Rozelle NSW Australia</p> <p>PA 114 14</p>
12 PRELIMINARY ISSUE FOR COORDINATION	17/01/12											
13 PRELIMINARY ISSUE FOR COORDINATION	18/01/12											
14 PRELIMINARY ISSUE FOR COORDINATION	20/01/12											
<p>LEVEL 4 PLAN RL 57.72</p>												



Revision	Revision	Date	Client	Contract - Design Architect	Design Documentation Architect	Drawing	Project	
12. PRELIMINARY ISSUE FOR COORDINATION		13/01/12	Rozelle Village Pty Limited	STANISIC ASSOCIATES ARCHITECTS	PTW Architects	DRAWN	PROJECT: 11.009	
13. PRELIMINARY ISSUE FOR COORDINATION		18/01/12	Level 5, 345 Kent St, Sydney NSW Australia 2000	Level 5, 345 Kent St, Sydney NSW Australia 2000	Level 17, 9 Castlereagh St, Sydney NSW Australia 2000	CHECKED	SCALE: 1:250@A1	
14. PRELIMINARY ISSUE FOR COORDINATION		20/01/12	Telephone: Facsimile: e-mail:	Tel: 612 9290 7871 Fax: 612 9299 7972 www.stanisic.com.au	Tel: 612 9232 0477 Fax: 612 9231 4139 www.ptw.com.au		DATE: 20/01/12	
<p>Do not scale from drawings, verify all dimensions on site before commencing work. Copying or the reproduction of this drawing is strictly prohibited without the consent of Stanisic Architects P/L and PTW Architects P/L.</p>							<p>Rozelle Village Victoria Road, Darling Street and Waterloo Street Rozelle NSW Australia</p>	
						<p>PTW</p>	<p>LEVEL 5 PLAN RL 62.22</p>	<p>PA 115 14</p>



LEGEND

RESIDENTIAL:

- RESIDENTIAL
- POOL
- RETAIL
- COMMERCIAL
- BALMAIN TIGERS CLUB
- CHILD CARE CENTRE
- COMMUNITY
- CIRCULATION + PLANT

Revision	Revision	Client	Concept + Design Architect	Design Documentation Architect	Drawing	Project
12	17/01/12	Rozelle Village Pty Limited	Level 3, 346 Kent St Sydney NSW Australia 2000 T 612 9299 7871 F 612 9299 7872 www.stanisic.com.au	PTW Architects Level 17, 9 Castlereagh St Sydney NSW Australia 2000 T 612 9232 5877 F 612 9221 4139 www.ptw.com.au	DRAWN CHECKED	PROJ NO. 11.009 SCALE 1:250@A1 DATE 20.01.12
13	18/01/12					
14	20/01/12					

Do not scale from drawings verify all dimensions on site before commencing work. Copying or the reproduction of this drawing is strictly prohibited without the consent of Frank Stanisic Architects P/L and PTW Architects P/L.

12 PRELIMINARY ISSUE FOR COORDINATION
13 PRELIMINARY ISSUE FOR COORDINATION
14 PRELIMINARY ISSUE FOR COORDINATION

Rozelle Village Pty Limited

Level 17/15 Pitt St
Sydney NSW Australia 2000
Telephone
Facsimile
e-mail

Level 3, 346 Kent St
Sydney NSW Australia 2000
T 612 9299 7871
F 612 9299 7872
www.stanisic.com.au



PTW Architects
Level 17, 9 Castlereagh St
Sydney NSW Australia 2000
T 612 9232 5877
F 612 9221 4139
www.ptw.com.au



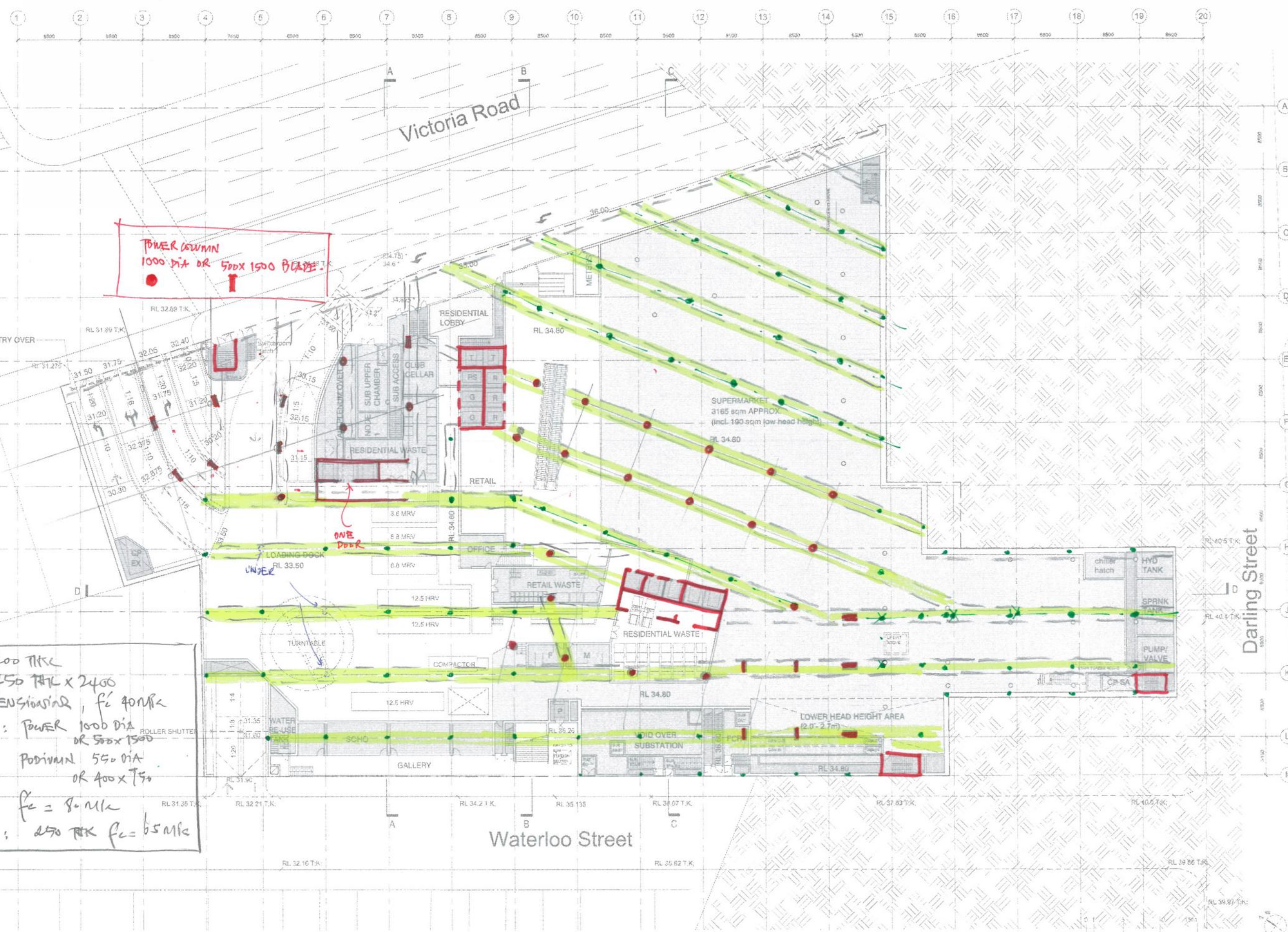
DRAWN
CHECKED

PROJ NO. 11.009
SCALE 1:250@A1
DATE 20.01.12

LEVELS 6 TO 10 PLAN (TYPE A)
RL 65.32 - 77.72

Rozelle Village
Victoria Road, Darling Street and Waterloo Street,
Rozelle NSW Australia

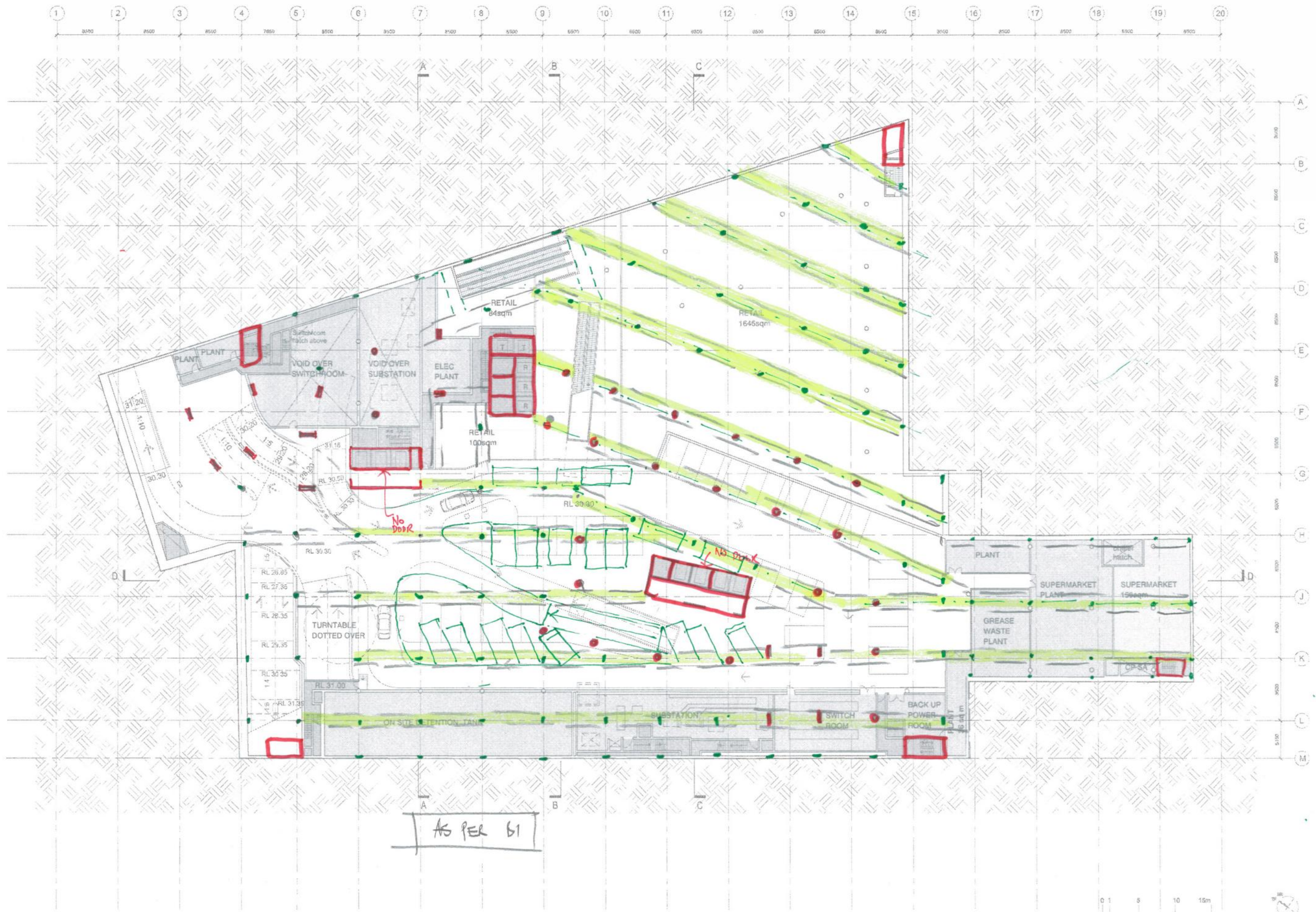
PA 116 14



POWER COLUMN
1000 DIA OR 500x1500 BLADE

SLAB 200 THK
 BAND 450 THK x 2400
 POST-TENSIONING, f_c 40MPa
 COLUMN: POWER 1000 DIA
 OR 500x1500
 PODIUM 550 DIA
 OR 400x150
 $f_c = 80$ MPa
 CORE: 250 THK $f_c = 65$ MPa

Revision	Description	Date	Client	Concept + Design Architect	Design Documentation Architect	Drawn	Checked	Proj. No.	Scale	Date	Project
07	preliminary issue for coordination	25.10.2011	Rozelle Village Pty Limited	STANIS ASSOCIATES ARCHITECTS	PTW Architects	LJR	DH	210.006.00	1:300 @ A1	4x Rev	Rozelle Village
08	update with services feedback	31.10.2011									Victoria Road, Darling Street and Waterloo Street, Rozelle NSW Australia
09	waste rooms revised	02.11.2011									
10	alter to suit cinema & bit deletion	11.11.2011									
11	update from Fire & Life Safety review	17.11.2011	Level 17/15 Pitt St Sydney NSW Australia 2000	Level 5, 346 Kent St Sydney NSW Australia 2000 T +61 2 9210 7571 F +61 2 9210 4139 www.stanis.com.au	Level 17, 4 Collins Street St Sydney NSW Australia 2000 T +61 2 9382 0877 F +61 2 9221 4139 www.ptw.com.au						
12	update from services review	22.11.2011									
13	preliminary issue for coordination	22.11.2011									
14	preliminary issue for coordination	18.01.2012									



Revision	Revision	Client	Concept + Design Architect	Design Documentation Architect	Drawing	Project
07 preliminary lease for coordination	28.10.2011	Rozelle Village Pty Limited	STANISIC ASSOCIATES ARCHITECTS	PTW Architects	DRAWN LJR	Victoria Road, Darling Street and Waterloo Street, Rozelle NSW Australia
08 service room updates	31.10.2011				CHECKED DH	
09 parking updates	04.11.2011	Level 17/16 Pitt St Sydney NSW Australia 2000	Level 3, 348 Kent St Sydney NSW Australia 2000 T 612 9299 7671 F 612 9299 7672 www.stanisic.com.au	Level 17, 9 Castlereagh St Sydney NSW Australia 2000 T 612 9232 6877 F 612 9221 4139 www.ptw.com.au	PROJ NO. 210.008.00 SCALE 1:250 @ A1 DATE as flow	PA 102/14
10 shared to suit cinema & bar collision	11.11.2011					
11 updates from Fire & Life Safety review	17.11.2011					
12 updates from services review	22.11.2011					
13 preliminary issues for coordination	22.11.2011					
14 for coordination	18.01.2012					

AS PER B1

