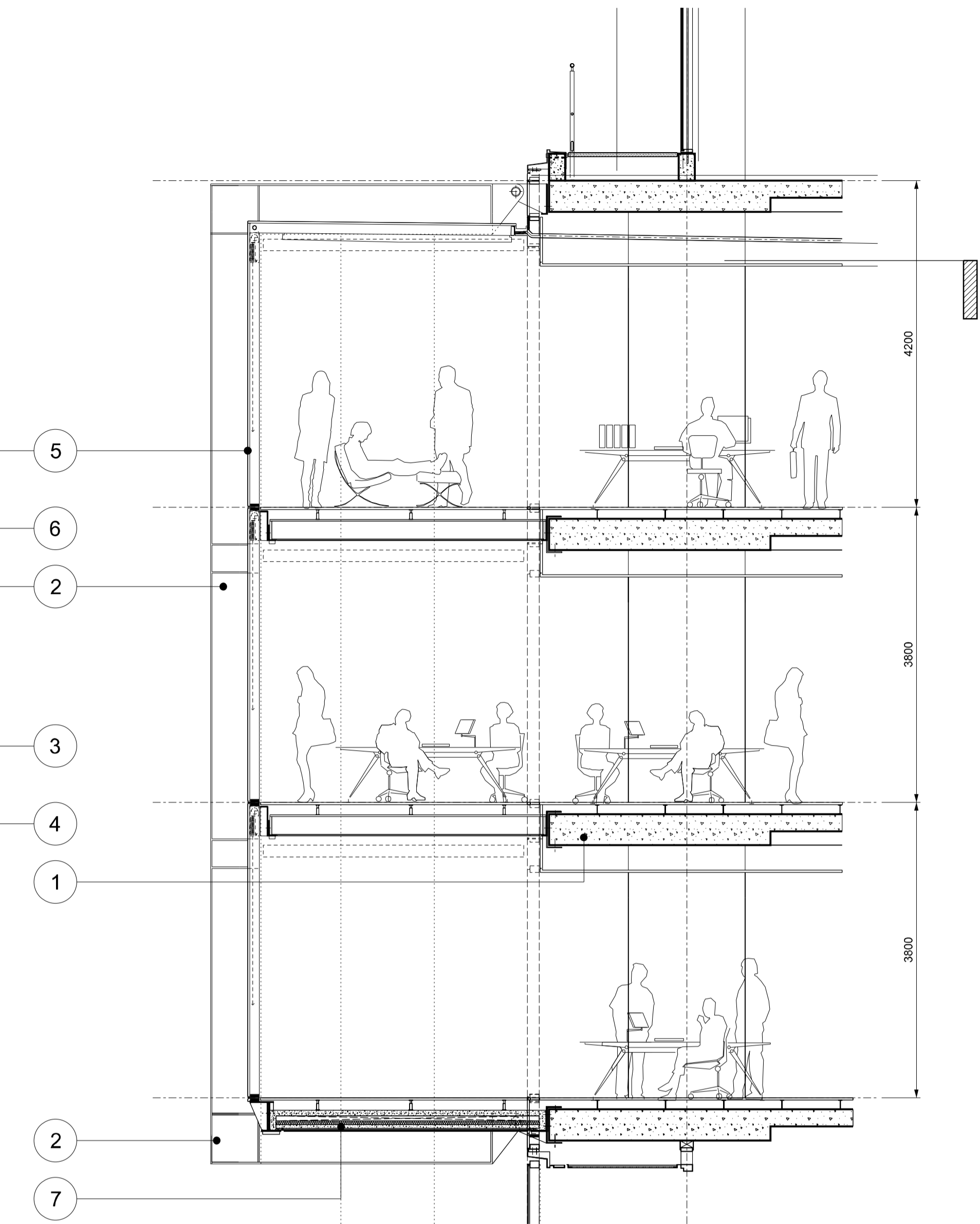
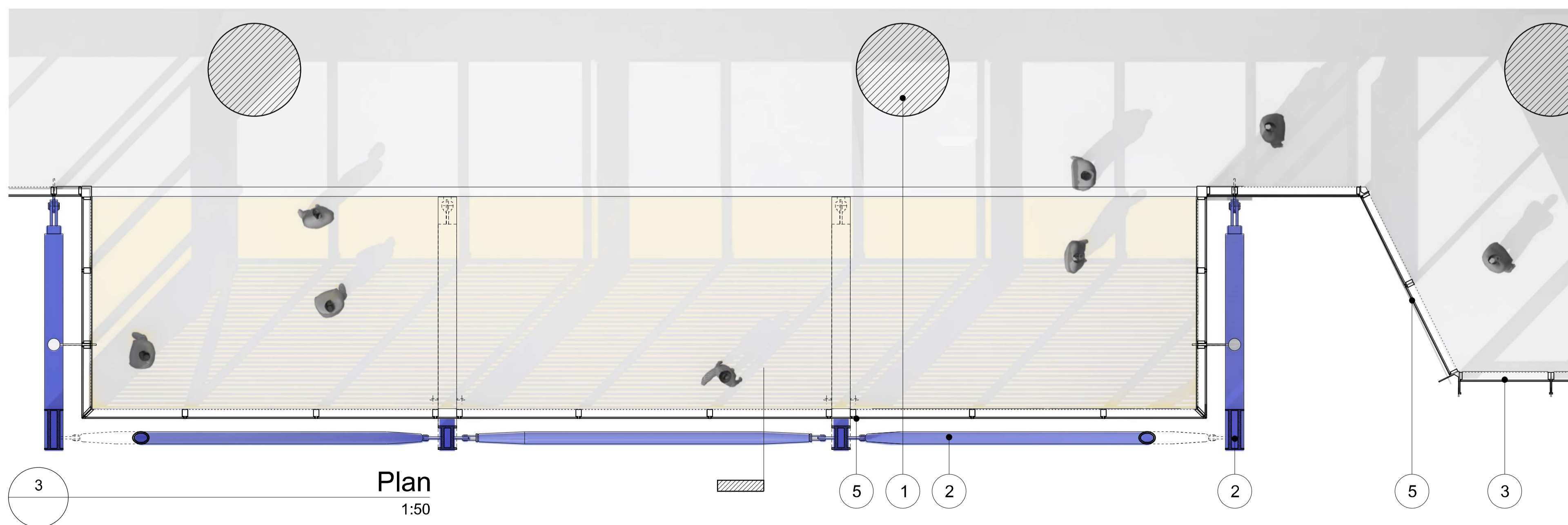


1  
**Elevation**  
1:50



2  
**Section**  
1:50



3  
**Plan**  
1:50

**MATERIAL DESCRIPTION**

- 1 - STRUCTURE  
Primary structural concrete frame
- 2 - STRUCTURE  
Painted steel structure to pop-out office box
- 3 - EXTERNAL ENVELOPE  
Double glazed unit within aluminium curtainwall system
- 4 - EXTERNAL ENVELOPE  
Back-painted glass spandrel and translucent upstand panels within aluminium curtainwall system
- 5 - SOUTH CUT  
Double glazed unit within aluminium curtainwall system
- 6 - SOUTH CUT  
Cementitious spandrel panel within aluminium curtainwall system
- 7 - EXTERNAL SOFFIT  
Back-painted glass soffit panel to pop-out office box supported on hidden sub-frame

Revision	Date	Description	Legal	Lead Architect	Collaborating Architect	Client	Site Address	Project	Drawn/Checked by	Drawing Title	Scale @ A1	Drawing Number
A	04-11-2011	Planning Application No.: MP10_0227	Do not scale from drawing. The author of this drawing takes no responsibility for any dimensions obtained by measuring or scaling from this drawing and no reliance must be placed on such dimensions. If no dimensions are given, it is the responsibility of the recipient to ascertain the dimensions specified from the author or other measurements. The lifting of all structural and non-structural elements must always be checked against the relevant engineering drawings. No reliance should be placed upon any information shown on this drawing. © copyright Rogers Stirk Harbour + Partners. All rights reserved 2010	<b>RSH Australia Pty Limited</b> Ivan Harbour   Principal Architect   RIAA NSW ARB 8484 65-69 Kent St Millers Point NSW 2000 Sydney, Australia t: +61 2 9253 5655 f: +61 2 9253 5666 email: J6100@rsh-p.com www.rsh-p.com	30 The Bond 30 Hickson Rd Millers Point NSW 2000 Sydney, Australia www.bovislendlease.com	Lend Lease design 30 The Bond 30 Hickson Rd Millers Point NSW 2000 Sydney, Australia www.bovislendlease.com	Barangaroo Hickson Rd Millers Point NSW 2000 Sydney, Australia	Barangaroo South - C5	JS/YT	Detailed Bay Typical South Facade South Cut + Pop-Out Box	1:50	RSH-A-C5-6120-S
B	24-02-2012	Amendments for Preferred Project Report						Planning Application No: MP10_0227-PPR			10-10-2011	Revision 24-02-2012 B