



NOTES:

COPYRIGHT © ALL RIGHTS RESERVED. THIS DRAWING MAY NOT BE REPRODUCED OR TRANSMITTED IN ANY FORM OR BY ANY MEANS IN PART OR IN WHOLE WITHOUT PERMISSION OF MORRIS BRAY MARTIN OLLMANN PTY. LTD.

ALL LEVELS AND DIMENSIONS TO BE VERIFIED PRIOR TO COMMENCEMENT OF WORK.  
USE FIGURED DIMENSIONS ONLY. DO NOT SCALE.

ALL WORK TO COMPLY WITH CURRENT REGULATIONS AND S.A.A. STANDARDS.

LEGEND:

B	KM	22.10.13	Updated East Elevation
A	MB	20.09.13	Approval
			PREVIOUS ISSUES REFER HAS-WH-DA220

No.	Initial	DATE	REVISION / ISSUE DETAILS
<b>QUANTITY SURVEYORS</b> <b>RIDER LEVETT BUCKNALL NSW PTY LTD</b> LEVEL 5, 41 McLAREN STREET PO BOX 531, NORTH SYDNEY, NSW 2059			
<b>ELECTRICAL, ICT &amp; LIFT SERVICES</b> <b>NDY MANAGEMENT PTY LTD</b> 40 MILLER STREET LEVEL 1 NORTH SYDNEY, NSW 2060			
<b>HYDRAULIC &amp; FIRE SERVICES</b> <b>ACOR CONSULTANTS PTY LTD</b> LEVEL 1, 24 FALCON STREET CROWS NEST, NSW, 2065			
<b>MECHANICAL SERVICES</b> <b>AECOM AUSTRALIA PTY LTD</b> LEVEL 21, 420 GEORGE STREET SYDNEY, NSW 2000			
<b>STRUCTURE</b> <b>TAYLOR THOMPSON WHITTING NSW PTY LTD</b> 48 CHANDOS STREET ST. LEONARDS, NSW 2065			
<b>PROJECT MANAGER</b> <b>JOHNSTAFF PROJECTS</b> LEVEL 8, 16 O'CONNELL STREET SYDNEY, NSW 2000			



ARCHITECT

**MBMO**  
MORRIS BRAY MARTIN OLLMANN  
180 The City Centre  
Level 15, 150 King Street  
Sydney NSW 2000 Australia  
Phone: 02 9251 1000  
www.mbmomo.com.au  
NSW Architects Registration Board nominated Architects: Terry Morris 3354, Gary Bray 3055

MAIN CONTRACTOR

**HANSEN YUNCKEN**  
LEVEL 6, 15 BOURKE ROAD  
MASCOT, NSW, 2020

PROJECT:

**ILLAWARRA ELECTIVE SURGERY SERVICE, WOLLONGONG HOSPITAL**

DRAWING TITLE:

**PERSPECTIVE VIEW 1**

SCALE:	DRAWN BY:	QA:	PLOT DATE:
N/A	@A0	KM/MB	CM
PROJECT:	DRAWING NUMBER:	ISSUE:	
<b>13031 MBMO-WH-DA-230</b>			<b>B</b>





NOTES:

COPYRIGHT © ALL RIGHTS RESERVED. THIS DRAWING MAY NOT BE REPRODUCED OR TRANSMITTED IN ANY FORM OR BY ANY MEANS IN PART OR IN WHOLE WITHOUT PERMISSION OF MORRIS BRAY MARTIN OLLMANN PTY. LTD.

ALL LEVELS AND DIMENSIONS TO BE VERIFIED PRIOR TO COMMENCEMENT OF WORK.  
USE FIGURED DIMENSIONS ONLY. DO NOT SCALE.

ALL WORK TO COMPLY WITH CURRENT REGULATIONS AND S.A.A. STANDARDS.

LEGEND:

PREVIOUS ISSUES REFER HAS-WH-DA220

No. Initial DATE

REVISION / ISSUE DETAILS

QUANTITY SURVEYORS

RIDER LEVETT BUCKNALL NSW PTY LTD

LEVEL 5, 41 McLAREN STREET  
PO BOX 531, NORTH SYDNEY, NSW 2059

RLB

Rider  
Levett  
Bucknall

ELECTRICAL, ICT & LIFT SERVICES

NDY MANAGEMENT PTY LTD

60 MILLER STREET LEVEL 1  
NORTH SYDNEY, NSW 2060

Norman  
Disney  
&  
Young

HYDRAULIC & FIRE SERVICES

ACOR CONSULTANTS PTY LTD

LEVEL 1, 24 FALCON STREET  
CROWS NEST, NSW, 2065

Ac  
OR

MECHANICAL SERVICES

AECOM AUSTRALIA PTY LTD

LEVEL 21, 420 GEORGE STREET  
SYDNEY, NSW 2000

AECOM

STRUCTURE

TAYLOR THOMPSON WHITTING NSW PTY LTD

48 CHANDOS STREET  
ST. LEONARDS, NSW 2065

TTW

PROJECT MANAGER

JOHNSTAFF PROJECTS

LEVEL 8, 16 O'CONNELL STREET  
SYDNEY, NSW 2000

JOHNSTAFF

NSW

GOVERNMENT

Health  
Infrastructure

NSW

GOVERNMENT

Health  
Illawarra Shoalhaven  
Local Health District

ARCHITECT

MBMO

MORRIS BRAY MARTIN OLLMANN

180 The Arcade, 1st Fl  
Crows Nest NSW 2065 Australia  
02 9551 1000 / 02 9551 1001  
www.mbmom.com.au  
NSW Architects Registration Board nominated Architects Terry Morris 3354 / Gary Bray 3055

0201 DA-014.pdf

MAIN CONTRACTOR

HANSEN YUNCKEN

LEVEL 6, 15 BOURKE ROAD  
MASCOT, NSW, 2020

hansen yuncken

BUILDING VALUE

PROJECT:

ILLAWARRA ELECTIVE SURGERY SERVICE,  
WOLLONGONG HOSPITAL

DRAWING TITLE:

PERSPECTIVE VIEW 2

SCALE:

DRAWN BY:

QA:

PLOT DATE:

NA

@AG

KM/MB

CM

23/09/2013

PROJECT:

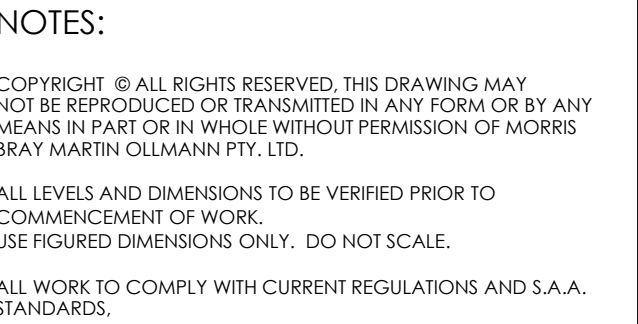
DRAWING NUMBER:

ISSUE:

13031 MBMO-WH-DA-231

N/A





1000000

PREVIOUS ISSUES REFER HAS-WH-DA220

No.	Initial	DATE	REVISION / ISSUE DETAILS
-----	---------	------	--------------------------

**QUANTITY SURVEYORS**  
**RIDER LEVETT BUCKNALL NSW PTY LTD**  
LEVEL 5, 41 McLAREN STREET  
PO BOX 531, NORTH SYDNEY, NSW 2059

The logo for Rider Levett Bucknall, featuring the letters 'RLB' in white on a blue square background, followed by the company name 'Rider Levett Bucknall' in a serif font.

**ELECTRICAL, ICT & LIFT SERVICES**  
**NDY MANAGEMENT PTY LTD**  
 60 MILLER STREET LEVEL 1  
 NORTH SYDNEY, NSW 2060

 **Norman  
Disney &  
Young**

**HYDRAULIC & FIRE SERVICES**  
**ACOR CONSULTANTS PTY LTD**  
LEVEL 1, 24 FALCON STREET  
CROWS NEST, NSW, 2065

**MECHANICAL SERVICES**  
**AECOM AUSTRALIA PTY LTD**  
LEVEL 21, 420 GEORGE STREET  
SYDNEY, NSW 2000

**AECOM**

**STRUCTURE**  
**TAYLOR THOMPSON WHITTING NSW PTY LTD**  
48 CHANDOS STREET  
ST. LEONARDS, NSW 2065

**PROJECT MANAGER**  
**JOHNSTAFF PROJECTS**  
LEVEL 8, 16 O'CONNELL STREET  
SYDNEY, NSW 2000

The logo for Johnstaff Projects, featuring a stylized diamond shape composed of four smaller diamonds, with the word "JOHNSTAFF" in blue capital letters below it.

**ARCHITECT**

**MBMCO**

**MORRIS BRAY MARTIN OLLMAN**

188 Willoughby Rd  
Crows Nest NSW 2065 Australia  
ABN 10 152 471 051

T +61 2 9439 6600  
info@mbmco.com  
www.mbmco.com

NSW Architects Registration Board Nominated Architects: Terry Morris 3354 Gary Bray 35

**MAIN CONTRACTOR**

**HANSEN YUNCKEN**  
LEVEL 6, 15 BOURKE ROAD  
MASCOT, NSW, 2020



The logo for Hansen Yuncken features a stylized blue wave icon to the left of the company name 'hansen yuncken' in a bold, lowercase sans-serif font. Below the company name, the tagline 'BUILDING VALUE' is written in a smaller, all-caps sans-serif font.

PROJECT:  
**ILLAWARRA ELECTIVE SURGERY  
SERVICE,  
WOLLONGONG HOSPITAL**

DRAWING TITLE:

**PERSPECTIVE VIEW 3**

SCALE:	DRAWN BY:	QA:	PLOT DATE:
NA @A0	KM/MB	CM	23/09/2013

PROJECT:	DRAWING NUMBER:	ISSUE:
<b>13031</b>	<b>MBMO-WH-DA-232</b>	<b>N/A</b>





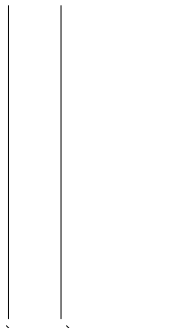
NOTES:

COPYRIGHT © ALL RIGHTS RESERVED. THIS DRAWING MAY NOT BE REPRODUCED OR TRANSMITTED IN ANY FORM OR BY ANY MEANS IN PART OR IN WHOLE WITHOUT PERMISSION OF MORRIS BRAY MARTIN OLLMANN PTY. LTD.

ALL LEVELS AND DIMENSIONS TO BE VERIFIED PRIOR TO COMMENCEMENT OF WORK. USE FIGURED DIMENSIONS ONLY. DO NOT SCALE.

ALL WORK TO COMPLY WITH CURRENT REGULATIONS AND S.A.A. STANDARDS.

LEGEND:



PREVIOUS ISSUES REFER HAS-WH-DA220

No. Initial DATE REVISION / ISSUE DETAILS

**QUANTITY SURVEYORS**  
**RIDER LEVETT BUCKNALL NSW PTY LTD**  
LEVEL 5, 41 McLAREN STREET  
PO BOX 531, NORTH SYDNEY, NSW 2059



**ELECTRICAL, ICT & LIFT SERVICES**  
**NDY MANAGEMENT PTY LTD**  
40 MILLER STREET LEVEL 1  
NORTH SYDNEY, NSW 2060



**HYDRAULIC & FIRE SERVICES**  
**ACOR CONSULTANTS PTY LTD**  
LEVEL 1, 24 FALCON STREET  
CROWS NEST, NSW, 2065



**MECHANICAL SERVICES**  
**AECOM AUSTRALIA PTY LTD**  
LEVEL 21, 420 GEORGE STREET  
SYDNEY, NSW 2000



**STRUCTURE**  
**TAYLOR THOMPSON WHITTING NSW PTY LTD**  
48 CHANDOS STREET  
ST. LEONARDS, NSW 2065



**PROJECT MANAGER**  
**JOHNSTAFF PROJECTS**  
LEVEL 8, 16 O'CONNELL STREET  
SYDNEY, NSW 2000



**ARCHITECT**  
**MBMO**  
MORRIS BRAY MARTIN OLLMANN  
188 Phillip Street  
Sydney NSW 2000 Australia  
02 9551 1000  
www.mbraymartin.com.au  
NSW Architects Registration Board nominated Architects Terry Marks 3354 / Gary Bray 3055

**MAIN CONTRACTOR**  
**HANSEN YUNCKEN**  
LEVEL 6, 15 BOURKE ROAD  
MASCOT, NSW, 2020



**PROJECT:**  
**ILLAWARRA ELECTIVE SURGERY SERVICE, WOLLONGONG HOSPITAL**

**DRAWING TITLE:**  
**PERSPECTIVE VIEW 4**

SCALE: DRAWN BY: QA: PLOT DATE:  
NA @A0 KM/MB CM 23/09/2013  
13031 DA 01.dwg

PROJECT: DRAWING NUMBER: ISSUE:  
**13031 MBMO-WH-DA-233 N/A**





E1 North Elevation  
SCALE 1:250

LEGEND

- 1 INSULATED WALL PANEL
- 2 CORRUGATED METAL SHEET
- 3 LIGHTWEIGHT WALL/ PAINTED
- 4 COMPOSITE ALUMINIUM PANEL
- 5 BRICK
- 6 ALUMINIUM FRAME WINDOW
- 7 FIBRE CEMENT PANEL
- 8 METAL LOUVRES
- 9 GLAZED CURTAIN WALL



E2 West Elevation  
SCALE 1:250

NOTES:

COPYRIGHT © ALL RIGHTS RESERVED. THIS DRAWING MAY NOT BE REPRODUCED OR TRANSMITTED IN ANY FORM OR BY ANY MEANS IN PART OR IN WHOLE WITHOUT PERMISSION OF MORRIS BRAY MARTIN OLLMANN PTY. LTD.

ALL LEVELS AND DIMENSIONS TO BE VERIFIED PRIOR TO COMMENCEMENT OF WORK.  
USE FIGURED DIMENSIONS ONLY. DO NOT SCALE.

ALL WORK TO COMPLY WITH CURRENT REGULATIONS AND S.A.A. STANDARDS.

LEGEND:

D	MB	20.09.13	Approval
			PREVIOUS ISSUES REFER HAS-WH-DA200

No.	Initial	DATE	REVISION / ISSUE DETAILS
<b>QUANTITY SURVEYORS</b> RIDER LEVETT BUCKNALL NSW PTY LTD LEVEL 5, 41 McLAREN STREET PO BOX 531, NORTH SYDNEY, NSW 2059			
<b>ELECTRICAL, ICT &amp; LIFT SERVICES</b> NDY MANAGEMENT PTY LTD 40 MILLER STREET LEVEL 1 NORTH SYDNEY, NSW 2060			
<b>HYDRAULIC &amp; FIRE SERVICES</b> ACOR CONSULTANTS PTY LTD LEVEL 1, 24 FALCON STREET CROWS NEST, NSW 2065			
<b>MECHANICAL SERVICES</b> AECOM AUSTRALIA PTY LTD LEVEL 21, 420 GEORGE STREET SYDNEY, NSW 2000			
<b>STRUCTURE</b> TAYLOR THOMPSON WHITTING NSW PTY LTD 48 CHANDOS STREET ST. LEONARDS, NSW 2065			
<b>PROJECT MANAGER</b> JOHNSTAFF PROJECTS LEVEL 8, 16 O'CONNELL STREET SYDNEY, NSW 2000			



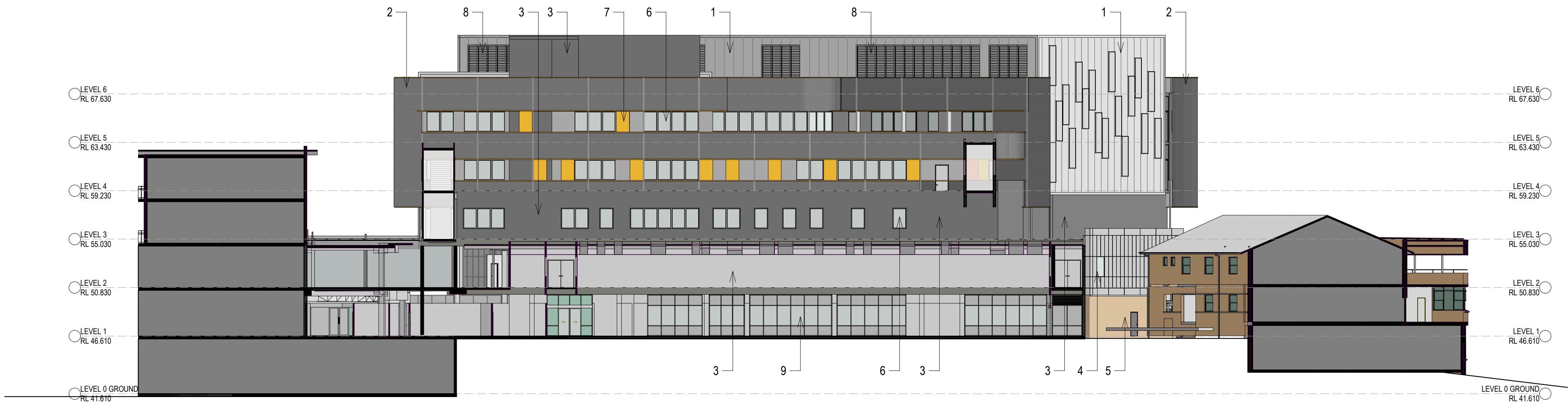
PROJECT:  
**ILLAWARRA ELECTIVE SURGERY SERVICE, WOLLONGONG HOSPITAL**

DRAWING TITLE:  
**ELEVATION SHEET 1**

SCALE: 1:250  
DRAWN BY: @AG  
QA: KM/MB  
CM  
PLOT DATE: 23/09/2013  
13031 DA 01a.dgn

PROJECT: 13031 MBMO-WH-DA-200  
DRAWING NUMBER:  
ISSUE: D

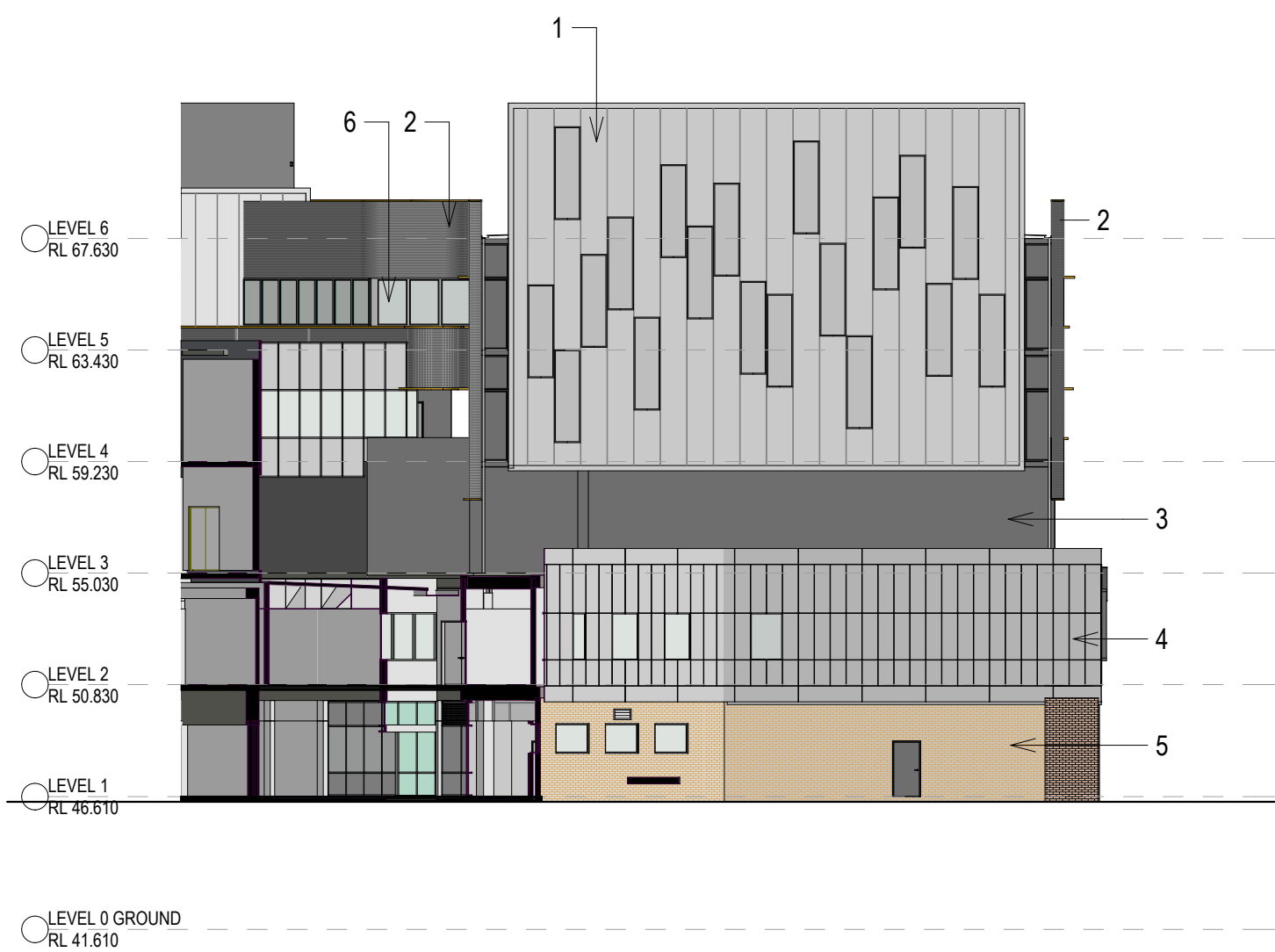




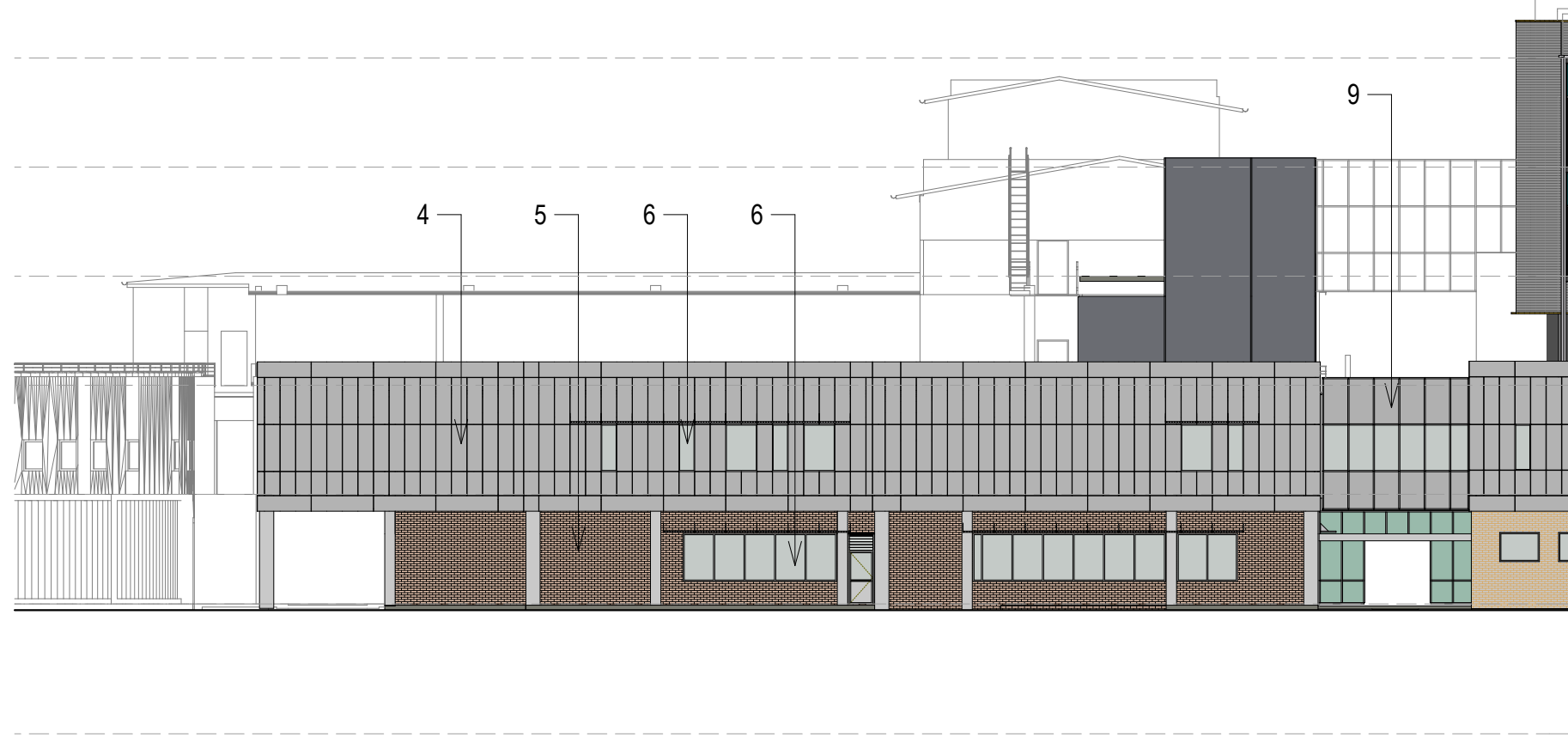
E3 South Elevation  
SCALE 1:250

### LEGEND

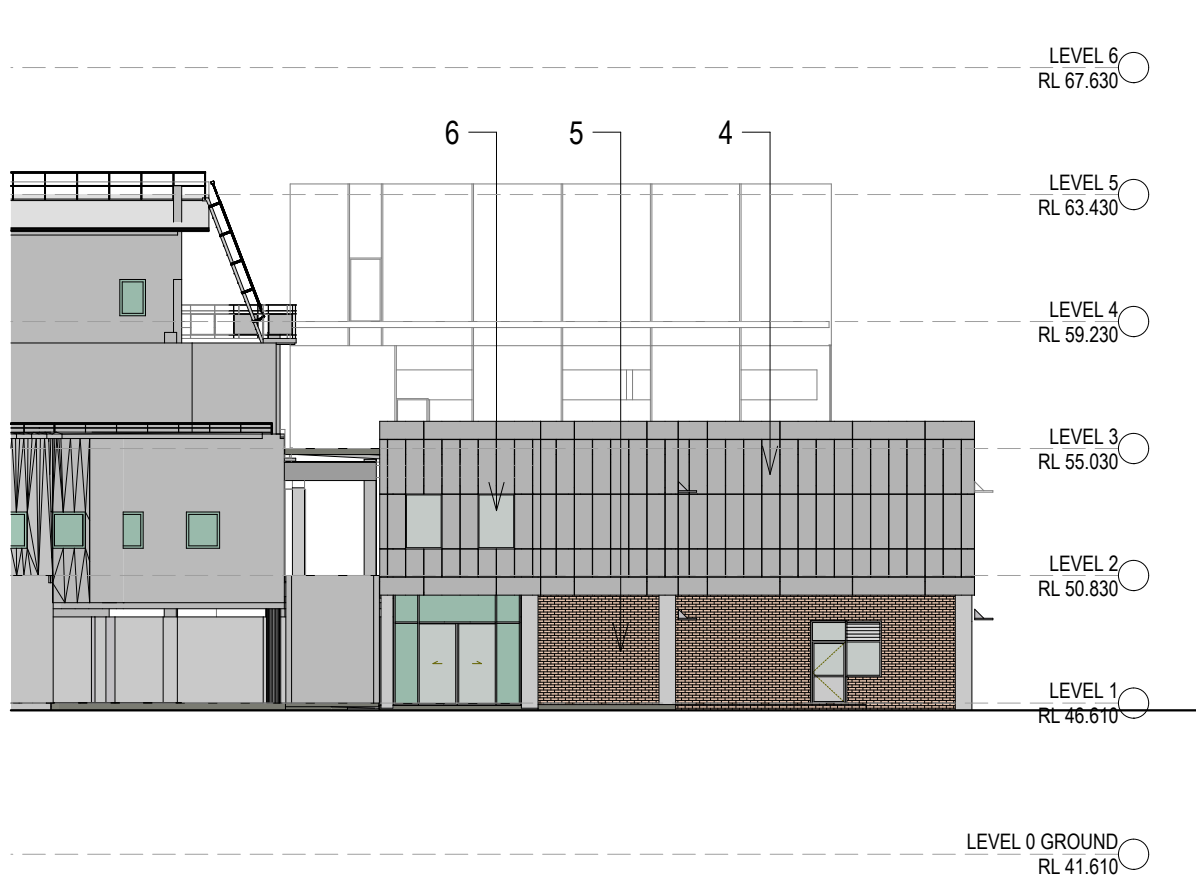
- 1 INSULATED WALL PANEL
- 2 CORRUGATED METAL SHEET
- 3 LIGHTWEIGHT WALL/ PAINTED
- 4 COMPOSITE ALUMINIUM PANEL
- 5 BRICK
- 6 ALUMINIUM FRAME WINDOW
- 7 FIBRE CEMENT PANEL
- 8 METAL LOUVRES
- 9 GLAZED CURTAIN WALL



E4 East Elevation  
SCALE 1:250



E5 East Elevation ED  
SCALE 1:250



E6 South Elevation ED  
SCALE 1:250

### NOTES:

COPYRIGHT © ALL RIGHTS RESERVED. THIS DRAWING MAY NOT BE REPRODUCED OR TRANSMITTED IN ANY FORM OR BY ANY MEANS IN PART OR IN WHOLE WITHOUT PERMISSION OF MORRIS BRAY MARTIN OLLMANN PTY. LTD.

ALL LEVELS AND DIMENSIONS TO BE VERIFIED PRIOR TO COMMENCEMENT OF WORK.  
USE FIGURED DIMENSIONS ONLY. DO NOT SCALE.

ALL WORK TO COMPLY WITH CURRENT REGULATIONS AND S.A.A. STANDARDS.

### LEGEND:

F	KM	22.10.13	Updated East Elevation
E	MB	20.09.13	Approval
			PREVIOUS ISSUES REFER HAS-WH-DA201

No. Initial DATE REVISION / ISSUE DETAILS

QUANTITY SURVEYORS  
**RIDER LEVETT BUCKNALL NSW PTY LTD**  
LEVEL 5, 41 McLAREN STREET  
PO BOX 531, NORTH SYDNEY, NSW 2059

ELECTRICAL, ICT & LIFT SERVICES  
**NDY MANAGEMENT PTY LTD**  
40 MILLER STREET LEVEL 1  
NORTH SYDNEY, NSW 2060

HYDRAULIC & FIRE SERVICES  
**ACOR CONSULTANTS PTY LTD**  
LEVEL 1, 24 FALCON STREET  
CROWS NEST, NSW, 2065

MECHANICAL SERVICES  
**AECOM AUSTRALIA PTY LTD**  
LEVEL 21, 420 GEORGE STREET  
SYDNEY, NSW 2000

STRUCTURE  
**TAYLOR THOMPSON WHITTING NSW PTY LTD**  
48 CHANDOS STREET  
ST. LEONARDS, NSW 2065

PROJECT MANAGER  
**JOHNSTAFF PROJECTS**  
LEVEL 8, 16 O'CONNELL STREET  
SYDNEY, NSW 2000

**NSW GOVERNMENT** Health Infrastructure  
**NSW GOVERNMENT** Health Illawarra Shoalhaven Local Health District

ARCHITECT  
**MBMO**  
MORRIS BRAY MARTIN OLLMANN  
14/1 CHANDOS  
Crows Nest NSW 2065 Australia  
0800 130 010  
NEW Architects Registration Board nominated Architects Terry Morris 3354 Conry Bay 2005

MAIN CONTRACTOR  
**HANSEN YUNCKEN**  
LEVEL 6, 15 BOURKE ROAD  
MASCOT, NSW, 2020

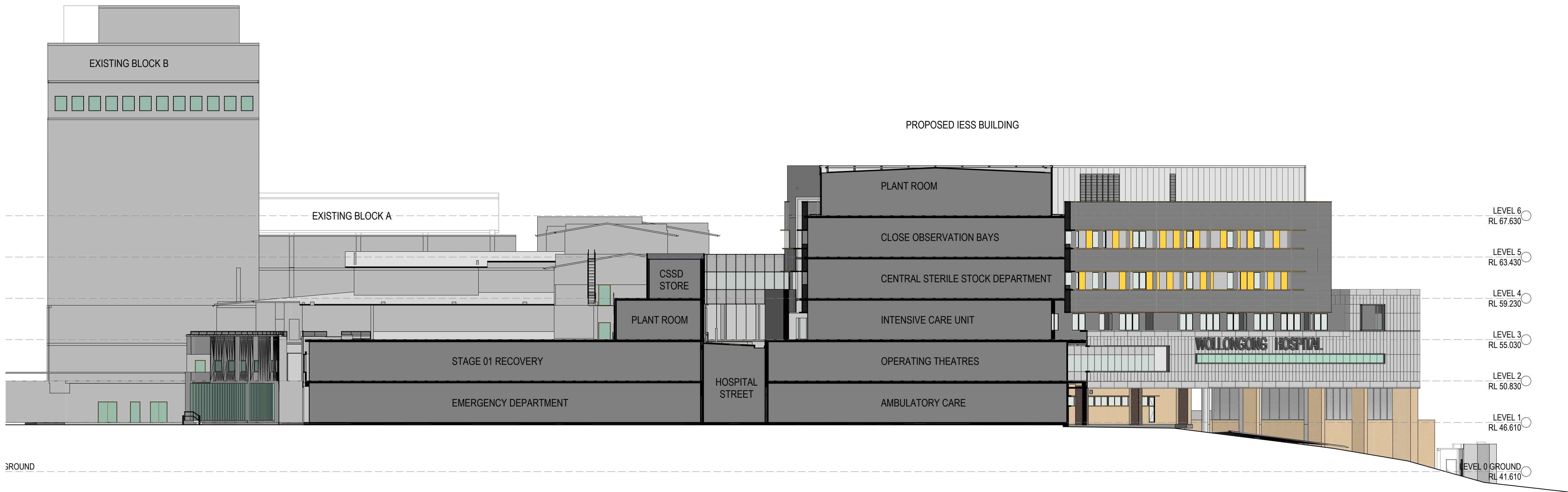
PROJECT:  
**ILLAWARRA ELECTIVE SURGERY SERVICE, WOLLONGONG HOSPITAL**

DRAWING TITLE:  
**ELEVATION SHEET 2**

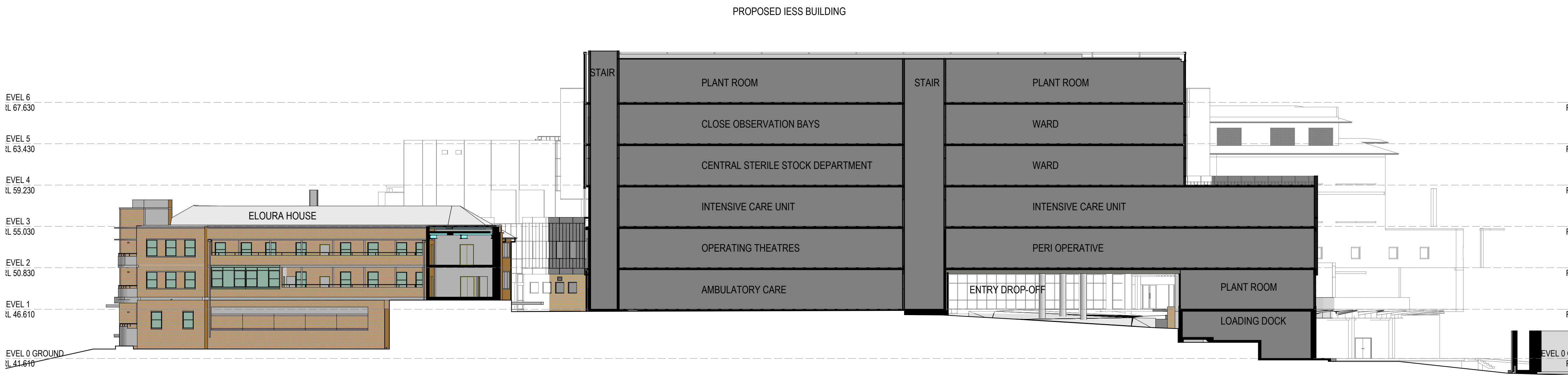
SCALE: 1:250 DRAWN BY: @AG QA: KM/MB CM PLOT DATE: 22/10/2013  
PROJECT: DRAWING NUMBER: 13031 DA 01a.dwg ISSUE:

**13031 MBMO-WH-DA-201 F**





AA SECTION AA  
SCALE 1:250



BB SECTION BB  
SCALE 1:250

NOTES:

COPYRIGHT © ALL RIGHTS RESERVED. THIS DRAWING MAY NOT BE REPRODUCED OR TRANSMITTED IN ANY FORM OR BY ANY MEANS IN PART OR IN WHOLE WITHOUT PERMISSION OF MORRIS BRAY MARTIN OLLMANN PTY. LTD.

ALL LEVELS AND DIMENSIONS TO BE VERIFIED PRIOR TO COMMENCEMENT OF WORK. USE FIGURED DIMENSIONS ONLY. DO NOT SCALE.

ALL WORK TO COMPLY WITH CURRENT REGULATIONS AND S.A.A. STANDARDS.

LEGEND:

C	MB	20.09.13	Approval
			PREVIOUS ISSUES REFER HAS-WH-DA220

No.	Initial	DATE	REVISION / ISSUE DETAILS
<b>QUANTITY SURVEYORS</b> <b>RIDER LEVETT BUCKNALL NSW PTY LTD</b> LEVEL 5, 41 McLAREN STREET PO BOX 531, NORTH SYDNEY, NSW 2059			
<b>ELECTRICAL, ICT &amp; LIFT SERVICES</b> <b>NDY MANAGEMENT PTY LTD</b> 40 MILLER STREET LEVEL 1 NORTH SYDNEY, NSW 2060			
<b>HYDRAULIC &amp; FIRE SERVICES</b> <b>ACOR CONSULTANTS PTY LTD</b> LEVEL 1, 24 FALCON STREET CROWS NEST, NSW, 2065			
<b>MECHANICAL SERVICES</b> <b>AECOM AUSTRALIA PTY LTD</b> LEVEL 21, 420 GEORGE STREET SYDNEY, NSW 2000			
<b>STRUCTURE</b> <b>TAYLOR THOMPSON WHITTING NSW PTY LTD</b> 48 CHANDOS STREET ST. LEONARDS, NSW 2065			
<b>PROJECT MANAGER</b> <b>JOHNSTAFF PROJECTS</b> LEVEL 8, 16 O'CONNELL STREET SYDNEY, NSW 2000			



PROJECT:  
**ILLAWARRA ELECTIVE SURGERY SERVICE, WOLLONGONG HOSPITAL**

DRAWING TITLE:  
**SECTION SHEET 1**

SCALE: 1:250	DRAWN BY: @AG	QA: KM/MB	PLOT DATE: 23/09/2013
PROJECT: <b>13031 MBMO-WH-DA-220</b>	DRAWING NUMBER:	ISSUE: <b>C</b>	13031 DA 01a.dgn