

11.2 Assault – Non domestic violence related

- Proportion of incidents by month
- Proportion of incidents by time of day, day of week
- Hotspot map

Figure 4. Proportion of non-domestic violence related assault incidents by month

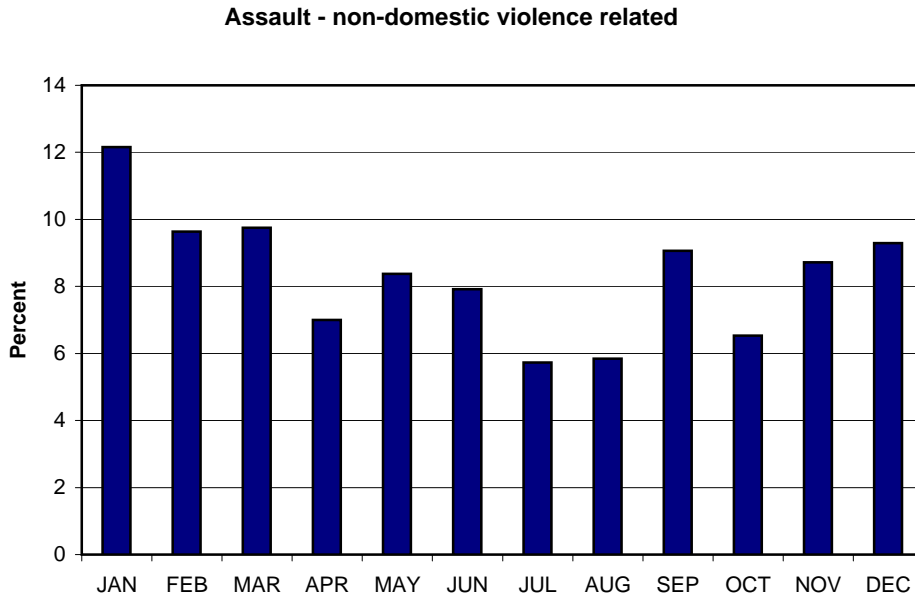


Figure 5. Proportion of non-domestic violence related assault incidents by time of day and day of week

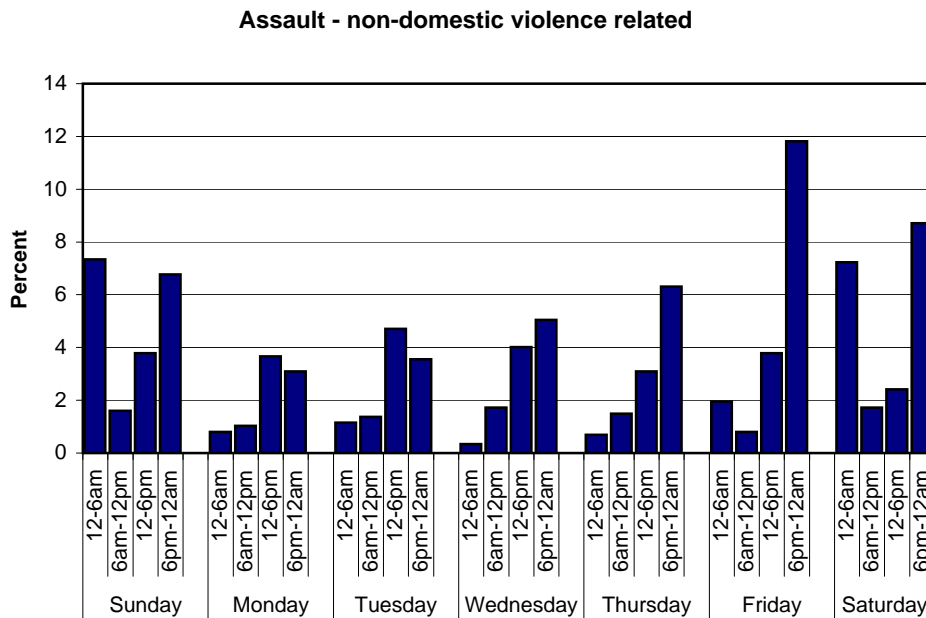
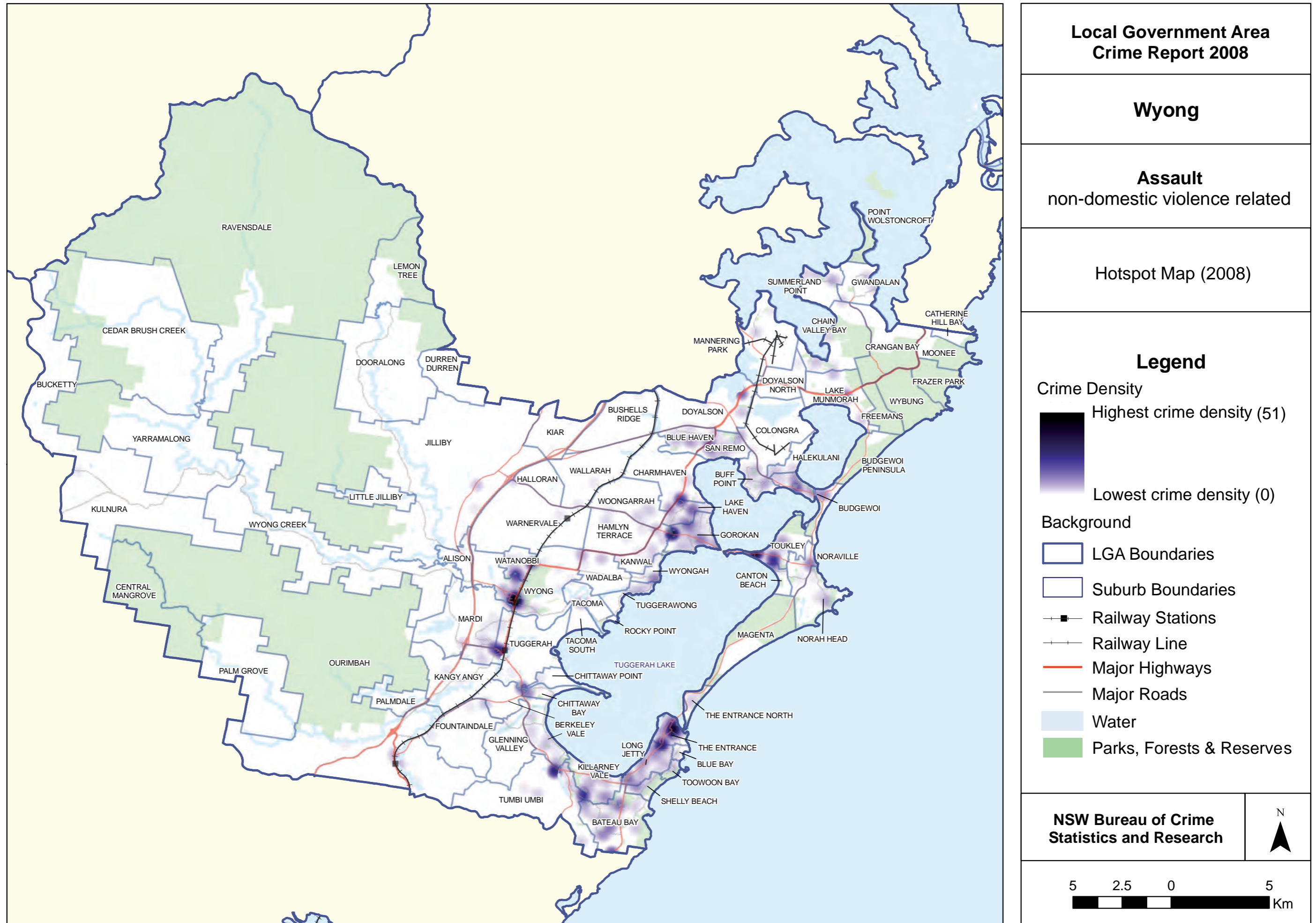


Figure 6. Hotspot map for non-domestic violence related assault incidents



11.3 Assault – alcohol related

- Proportion of incidents by month
- Proportion of incidents by time of day, day of week
- Hotspot map

Figure 7. Proportion of alcohol related assault incidents by month

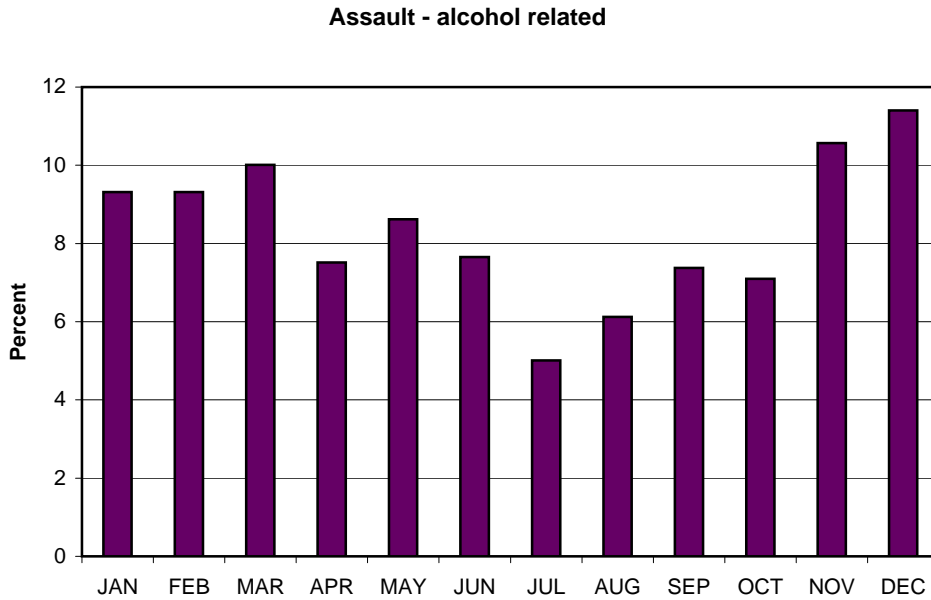


Figure 8. Proportion of alcohol related assault incidents by time of day and day of week

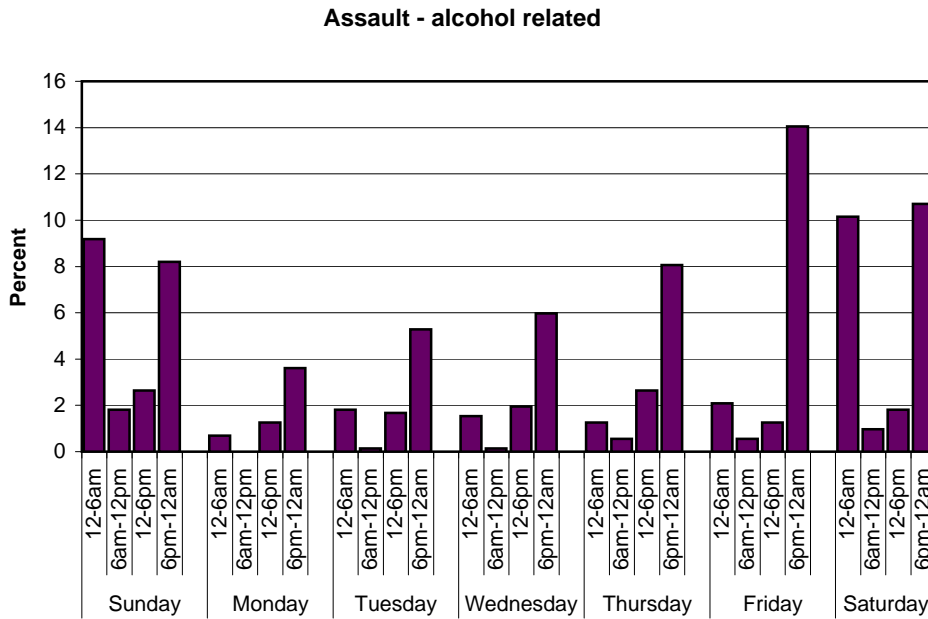
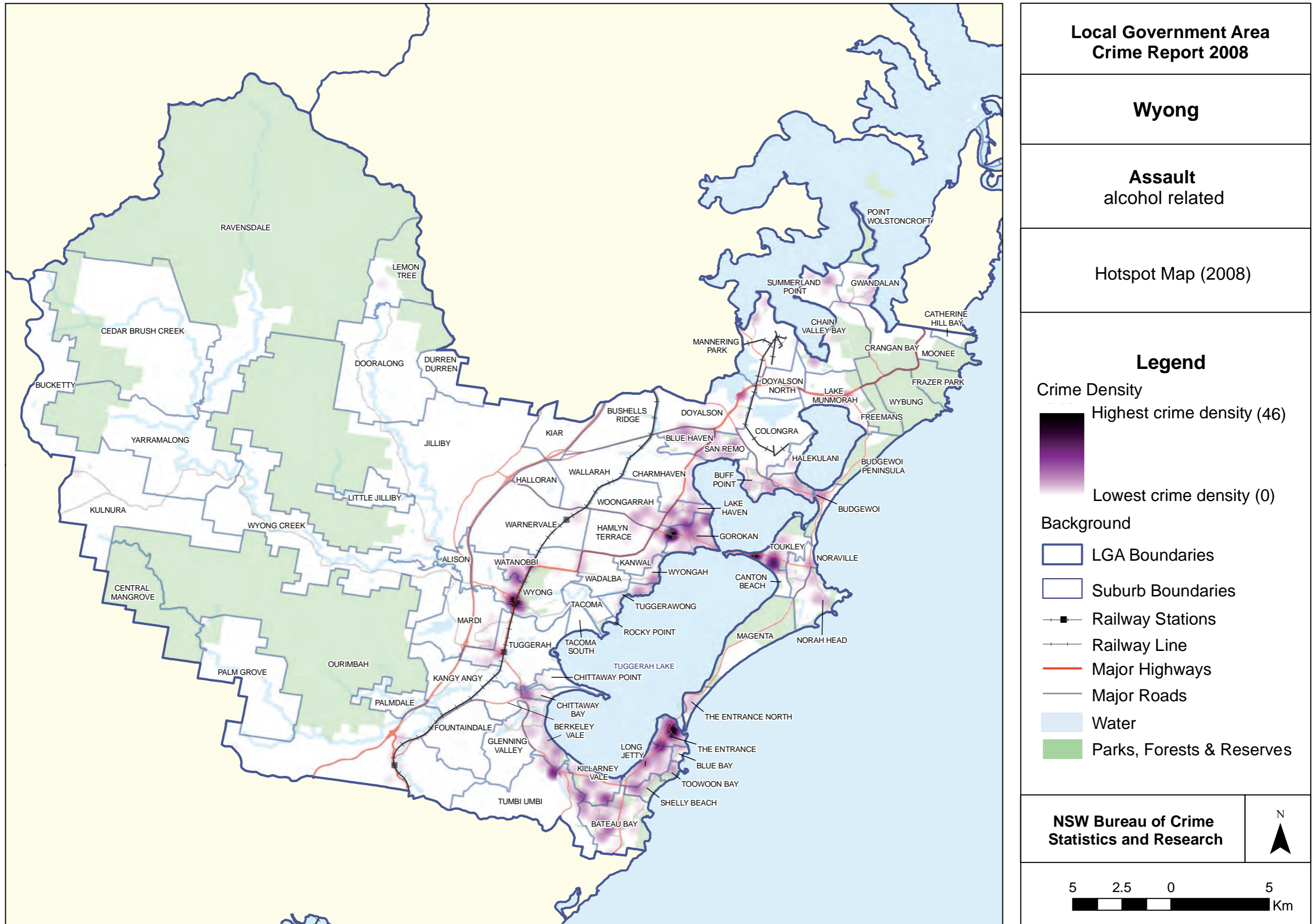


Figure 9. Hotspot map for alcohol related assault incidents



11.4 Robbery

- Proportion of incidents by month
- Proportion of incidents by time of day, day of week
- Hotspot map

Figure 10. Proportion of robbery incidents by month

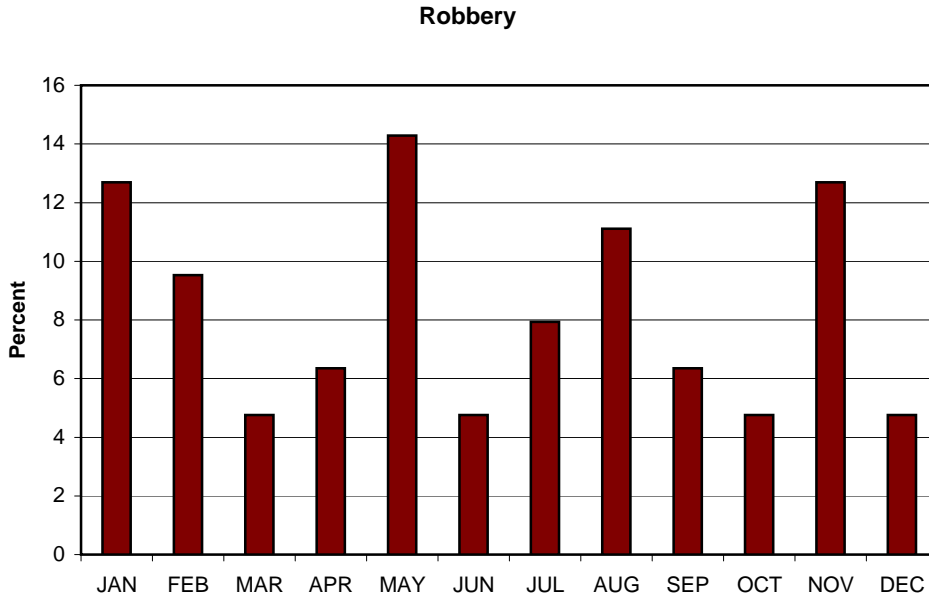


Figure 11. Proportion of robbery incidents by time of day and day of week

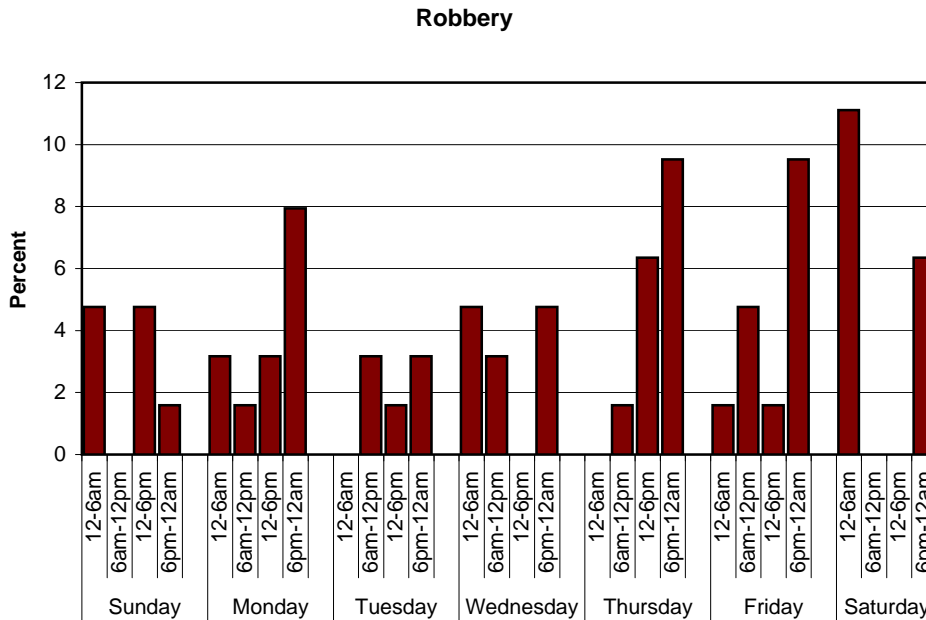
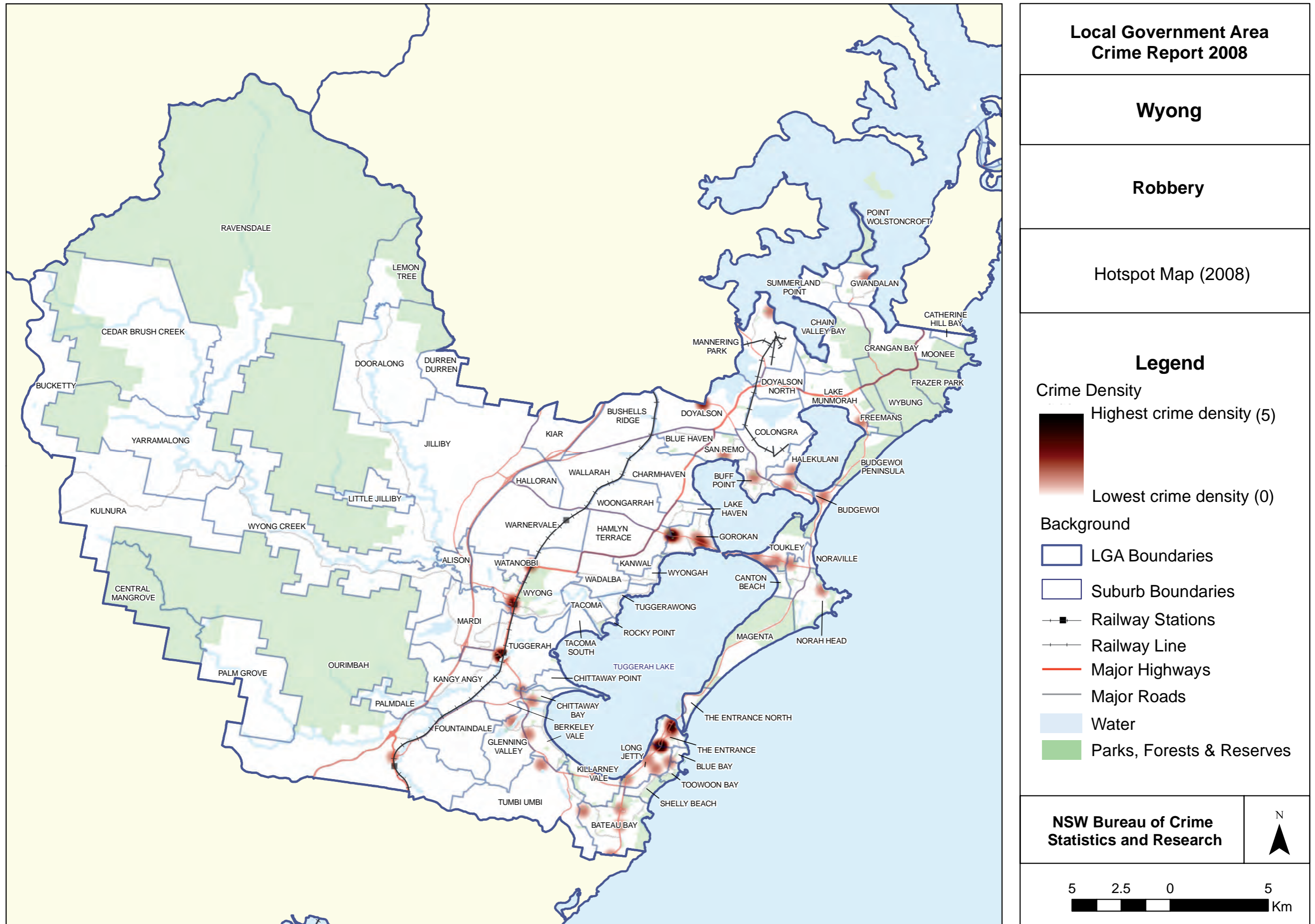


Figure 12. Hotspot map for robbery incidents



11.5 Break and enter - dwelling

- Proportion of incidents by month
- Proportion of incidents by time of day, day of week
- Hotspot map

Figure 13. Proportion of break and enter (dwelling) incidents by month

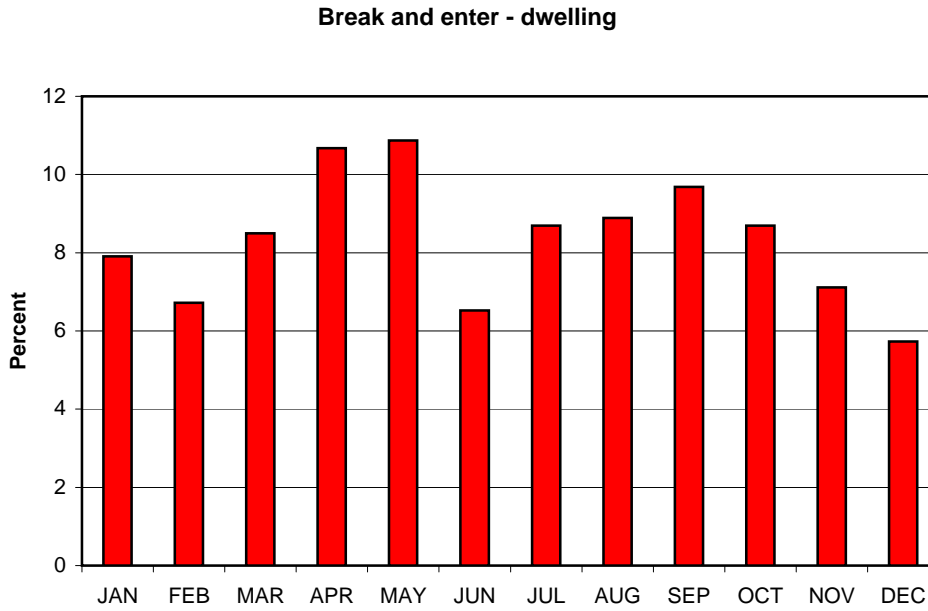


Figure 14. Proportion of break and enter (dwelling) incidents by time of day and day of week

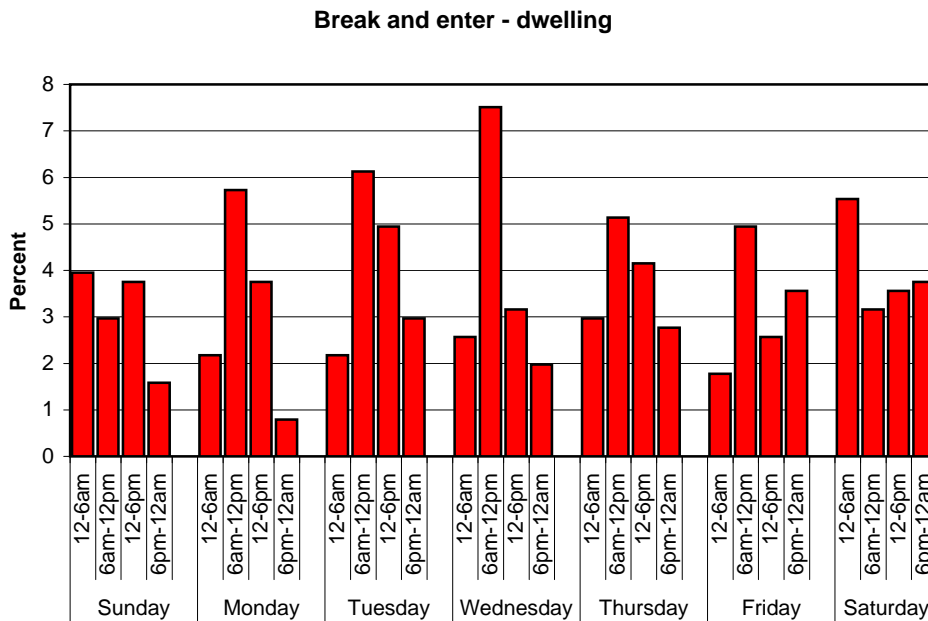
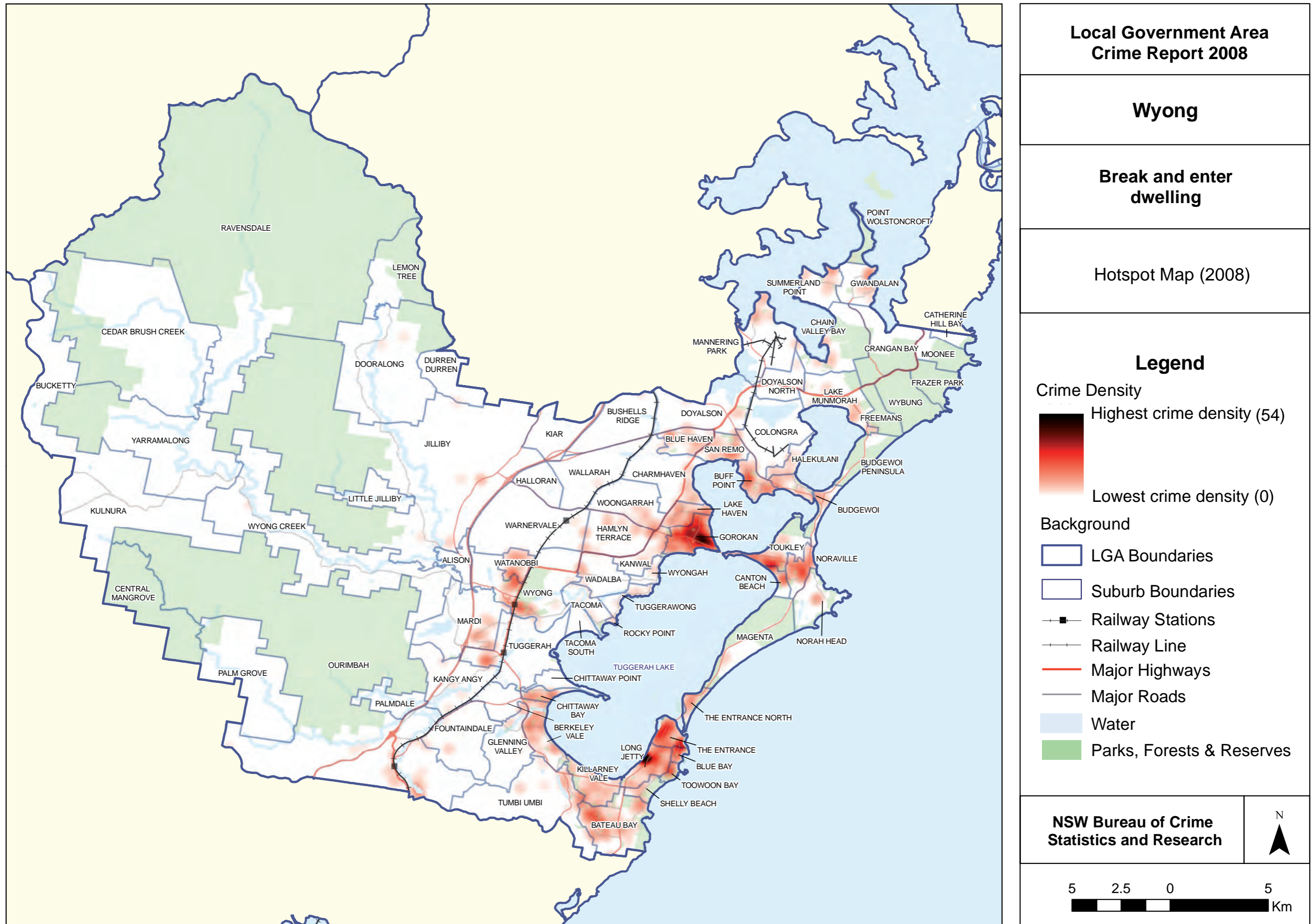


Figure 15. Hotspot map for break and enter (dwelling) incidents



11.6 Break and enter - non-dwelling

- Proportion of incidents by month
- Proportion of incidents by time of day, day of week
- Hotspot map

Figure 16. Proportion of break and enter (non-dwelling) incidents by month

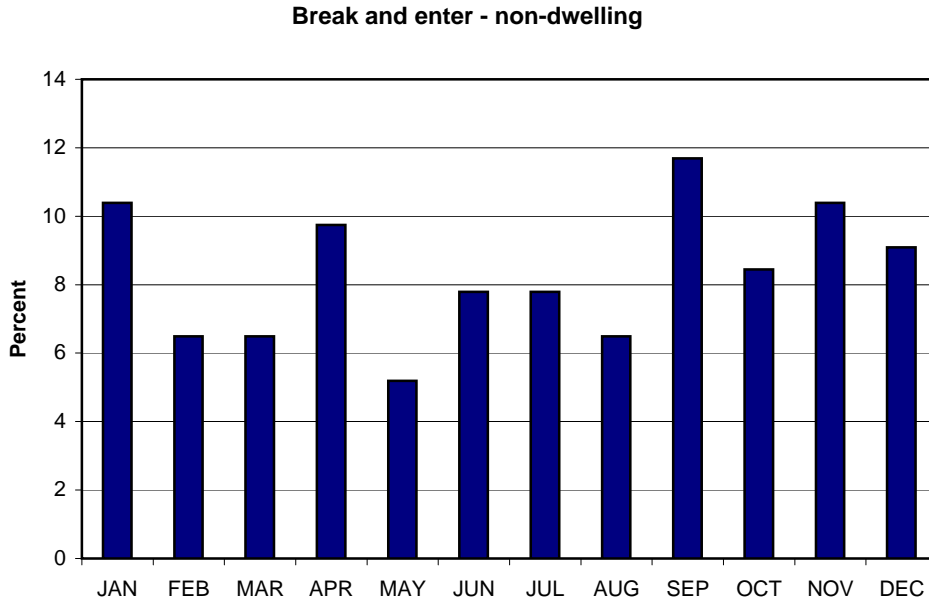


Figure 17. Proportion of break and enter (non-dwelling) incidents by time of day and day of week

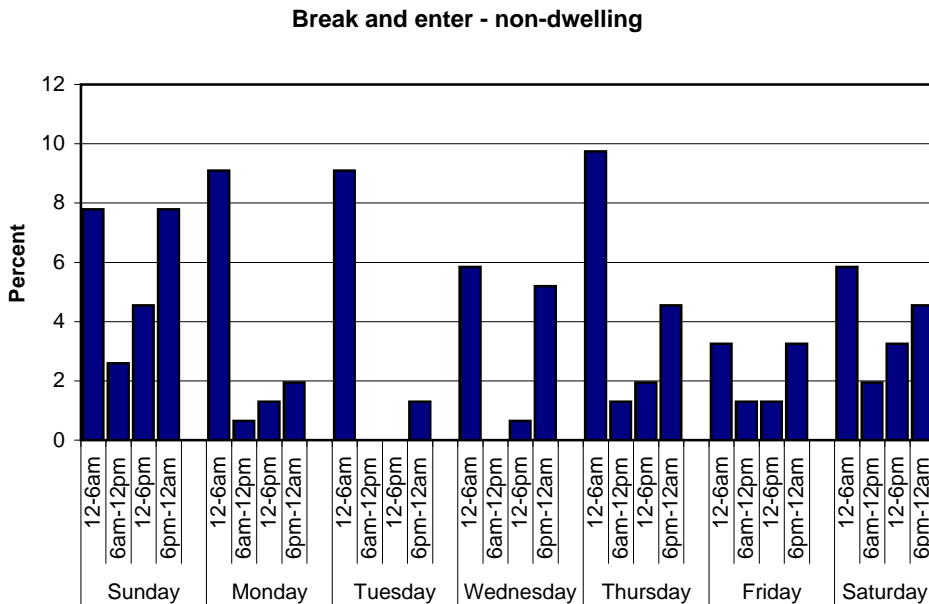
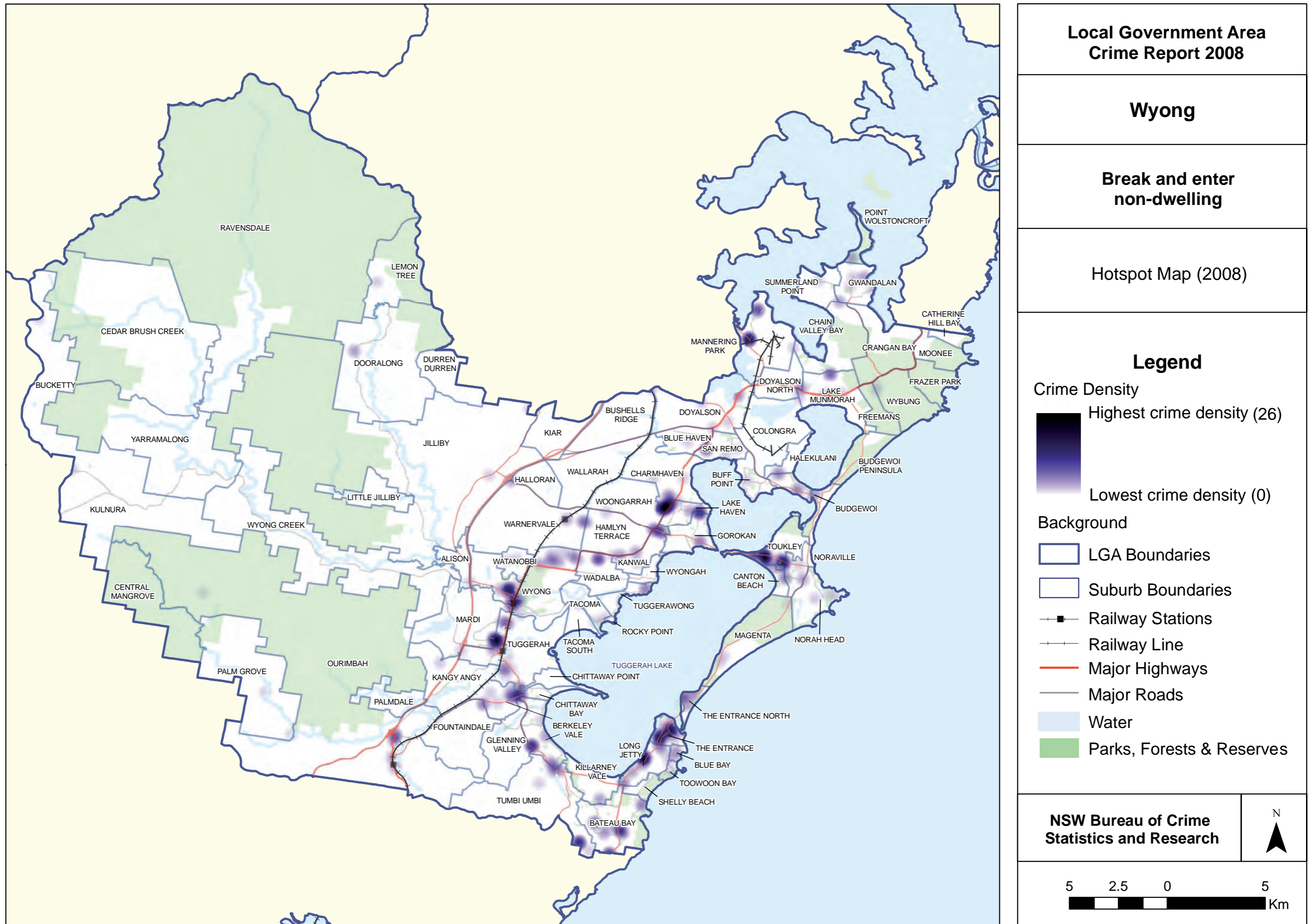


Figure 18. Hotspot map for break and enter (non-dwelling) incidents



11.7 Motor vehicle theft

- Proportion of incidents by month
- Proportion of incidents by time of day, day of week
- Hotspot map

Figure 19. Proportion of motor vehicle theft incidents by month

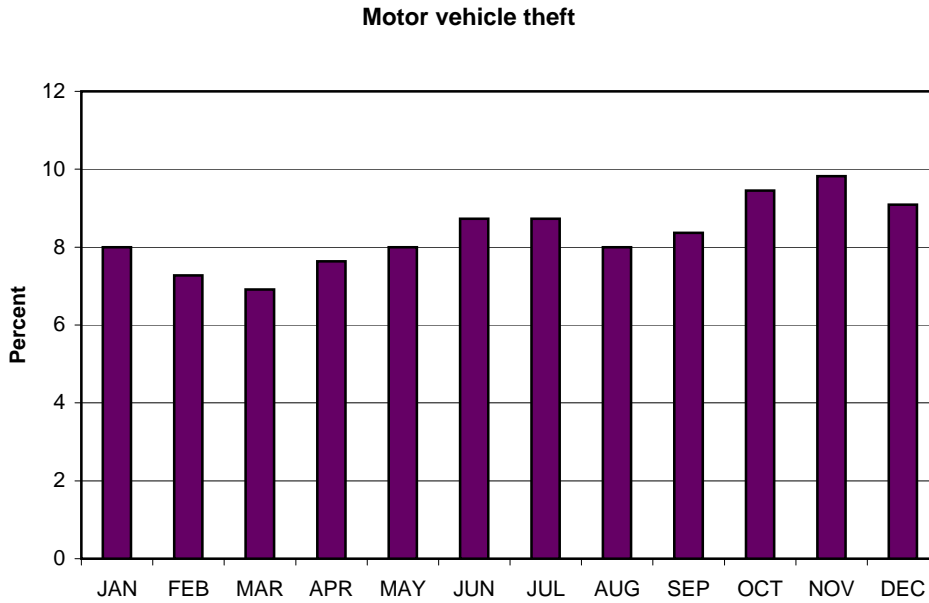


Figure 20. Proportion of motor vehicle theft incidents by time of day and day of week

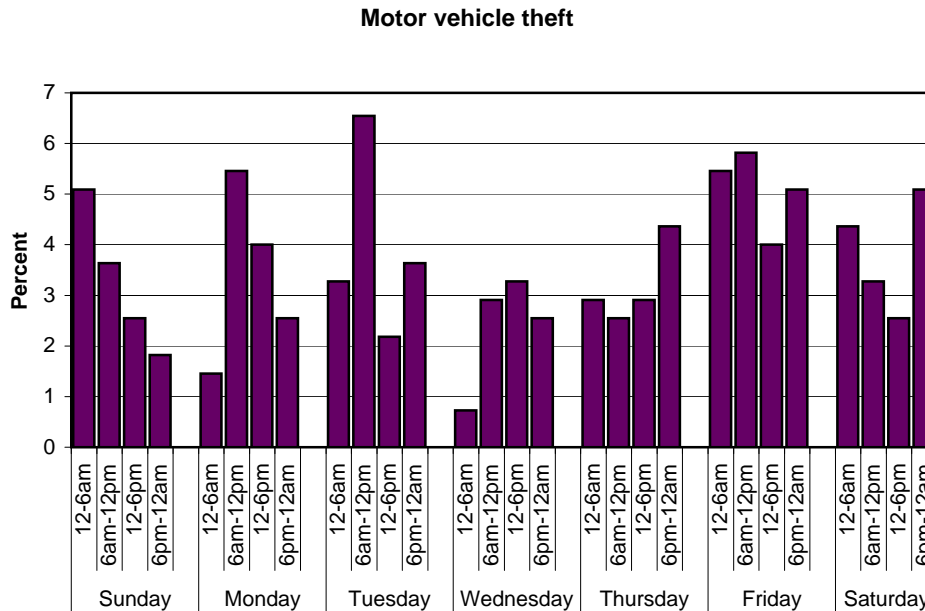
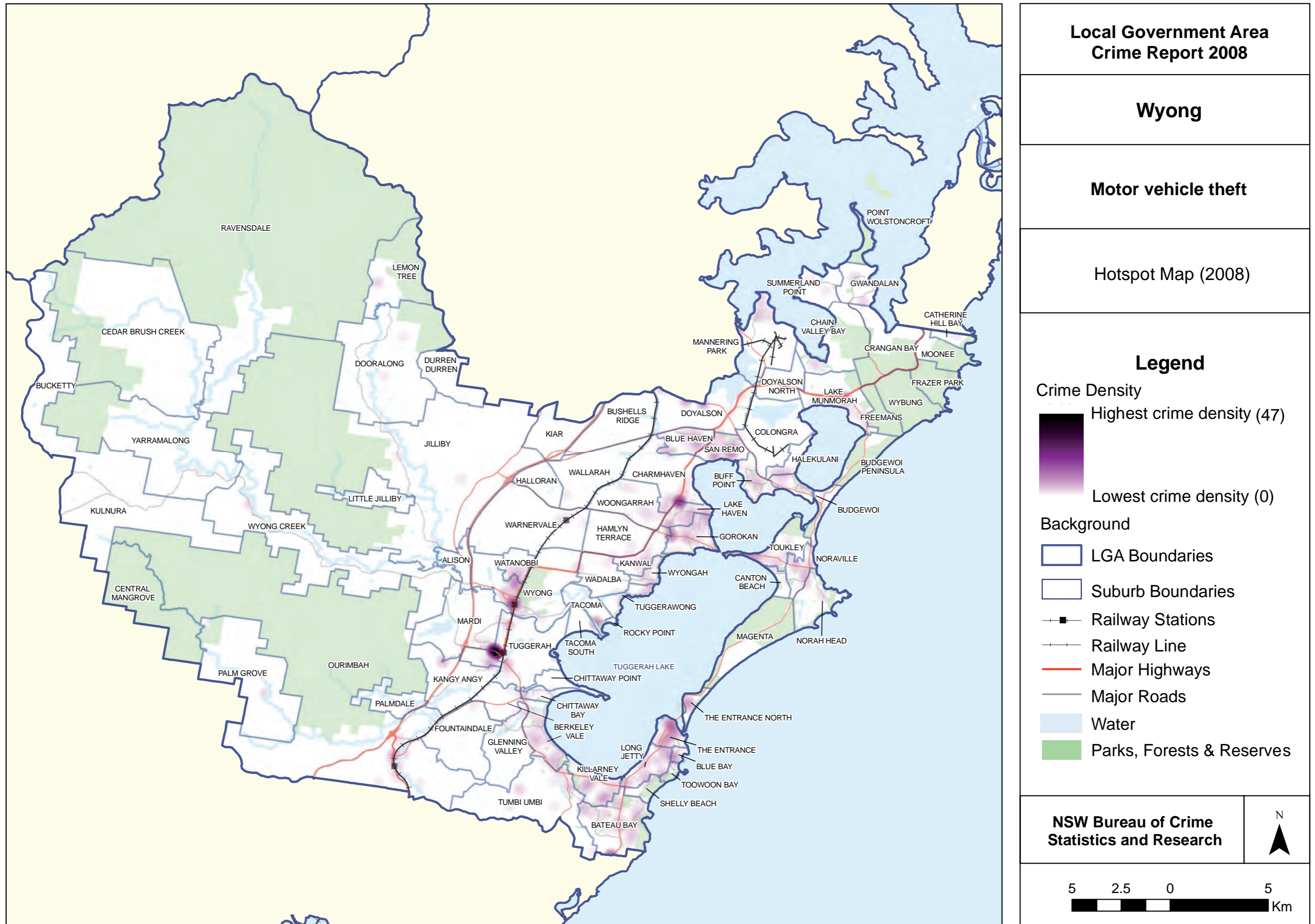


Figure 21. Hotspot map for motor vehicle theft incidents



11.8 *Steal from motor vehicle*

- Proportion of incidents by month
- Proportion of incidents by time of day, day of week
- Hotspot map

Figure 22. Proportion of steal from motor vehicle incidents by month

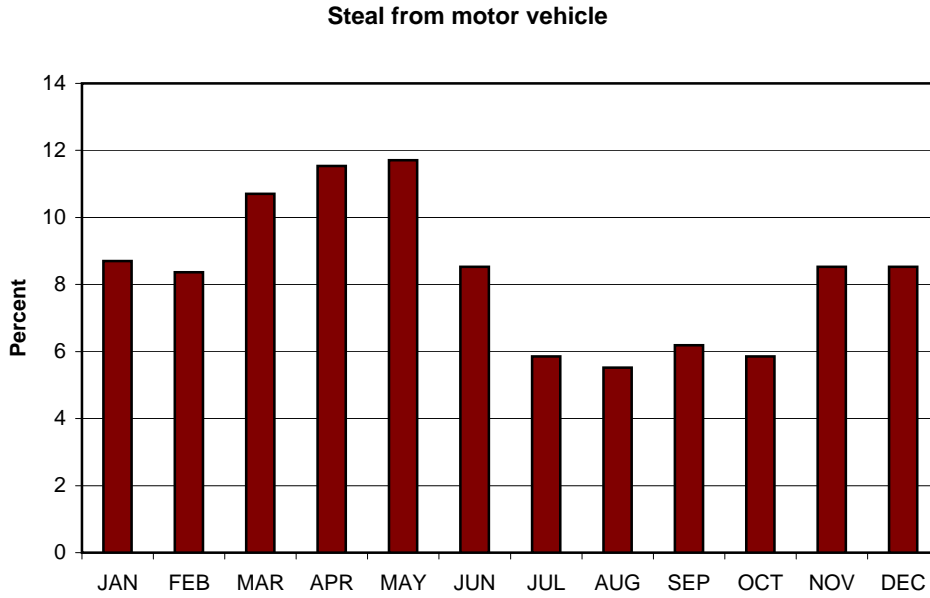


Figure 23. Proportion of steal from motor vehicle incidents by time of day and day of week

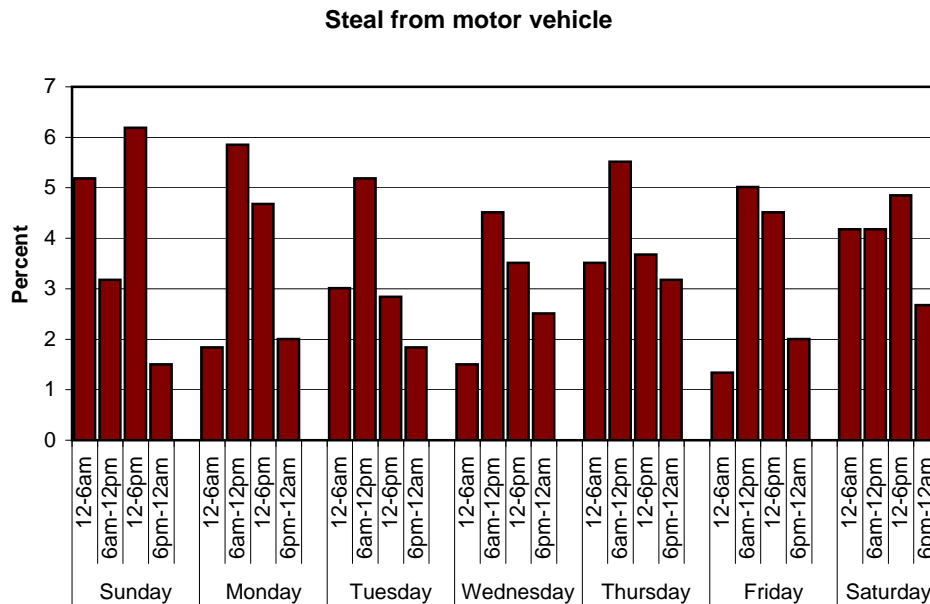
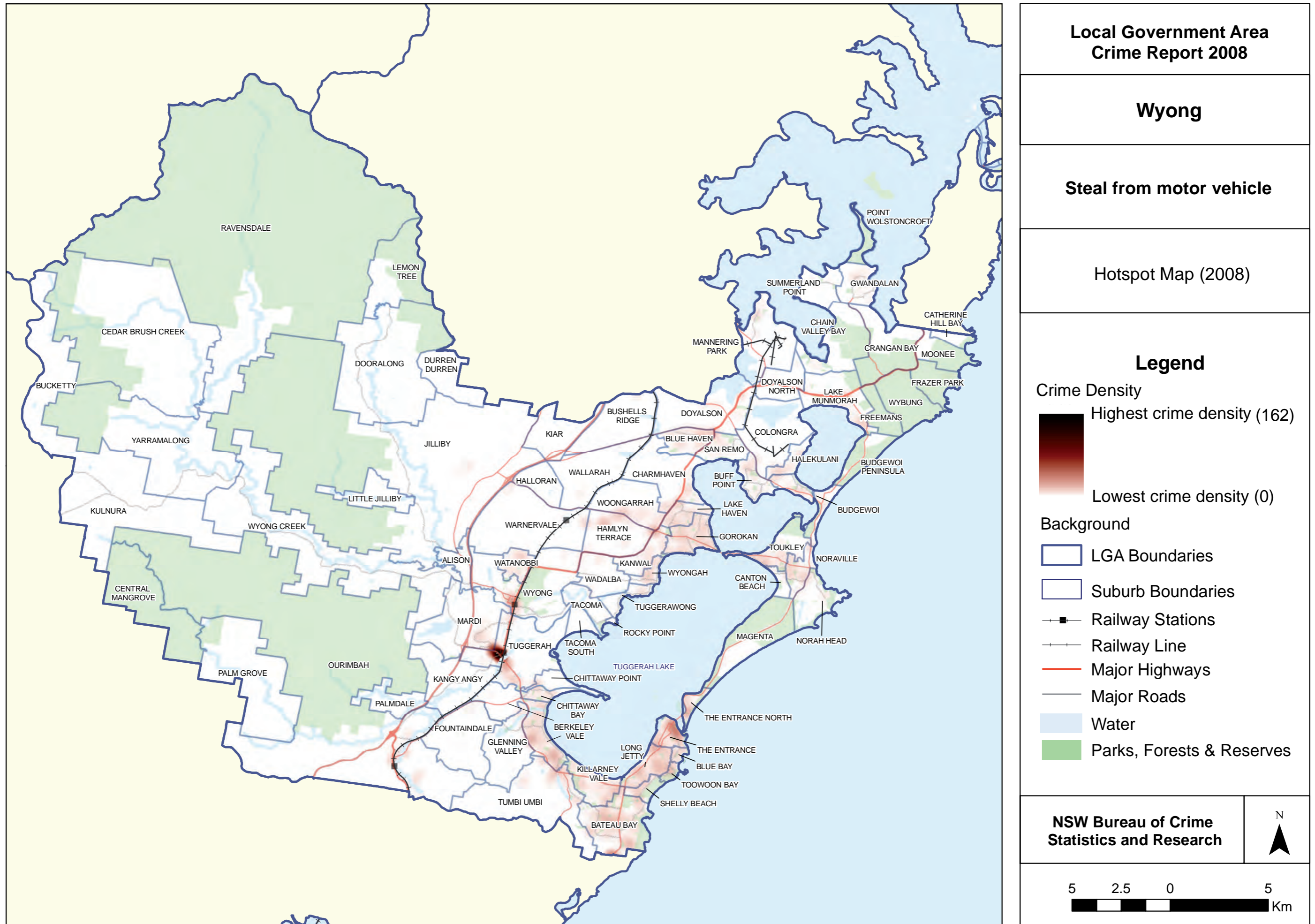


Figure 24. Hotspot map for steal from motor vehicle incidents



11.9 Steal from person

- Proportion of incidents by month
- Proportion of incidents by time of day, day of week
- Hotspot map

Figure 25. Proportion of steal from person incidents by month

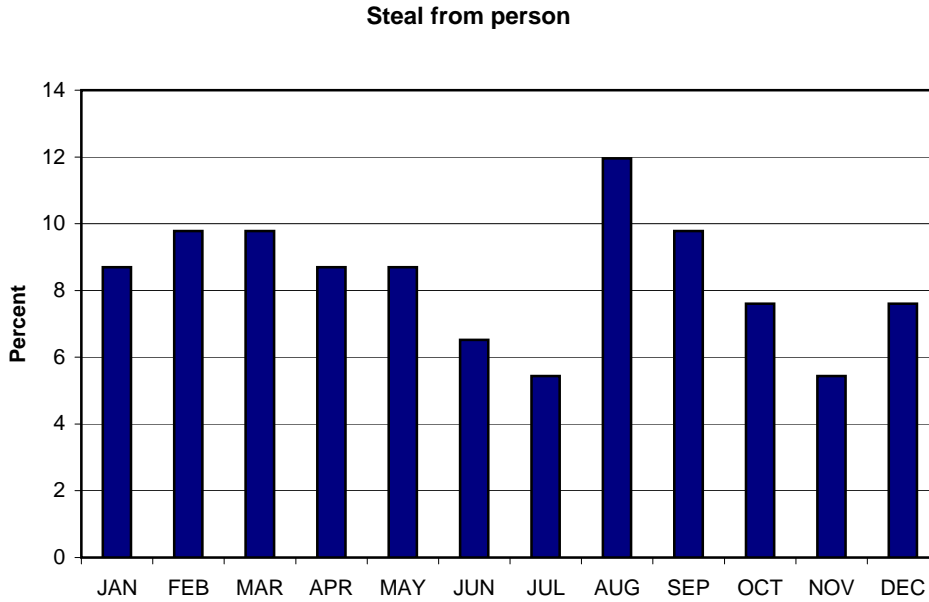


Figure 26. Proportion of steal from person incidents by time of day and day of week

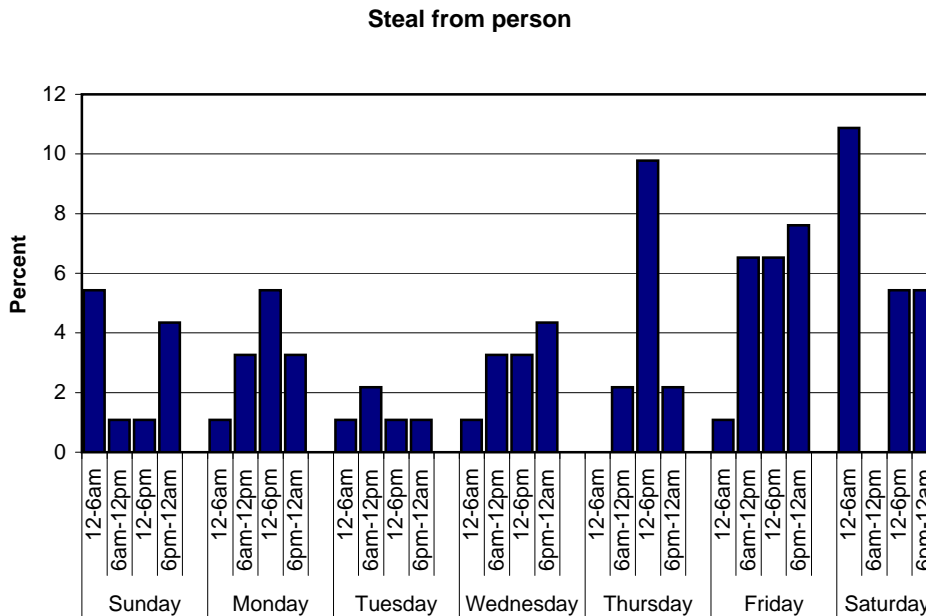
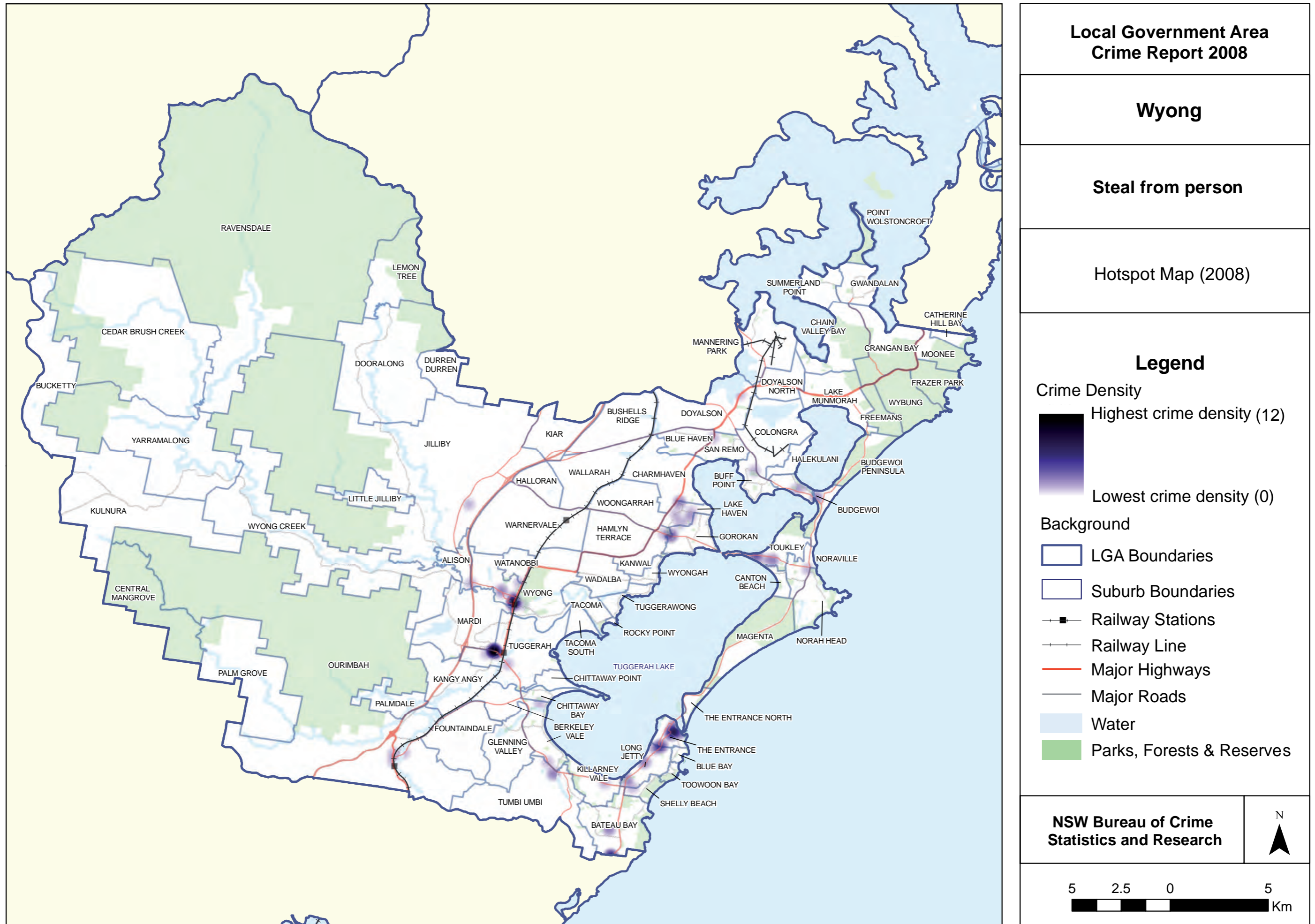


Figure 27. Hotspot map for steal from person incidents



11.10 Steal from dwelling

- Proportion of incidents by month
- Proportion of incidents by time of day, day of week
- Hotspot map

Figure 28. Proportion of steal from dwelling incidents by month

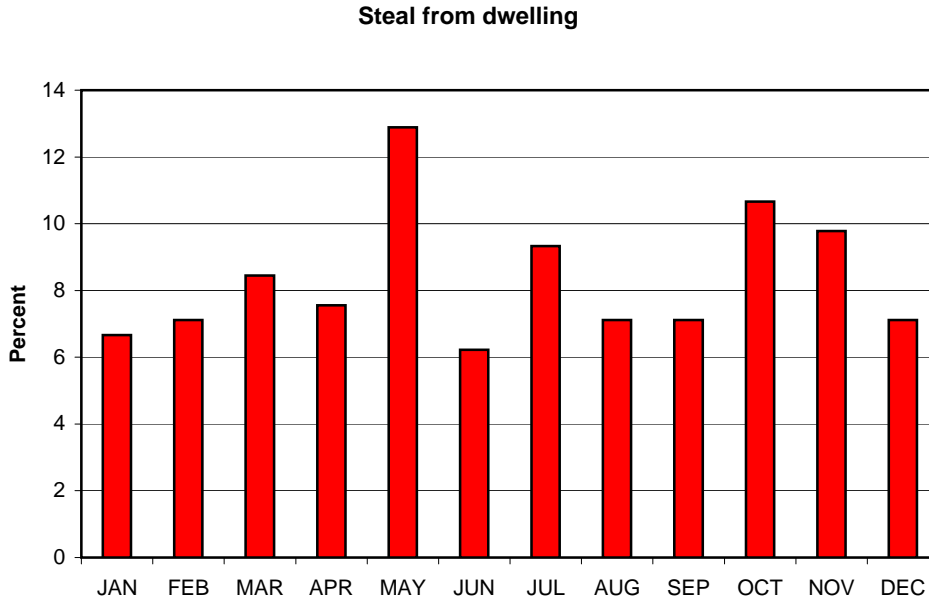


Figure 29. Proportion of steal from dwelling incidents by time of day and day of week

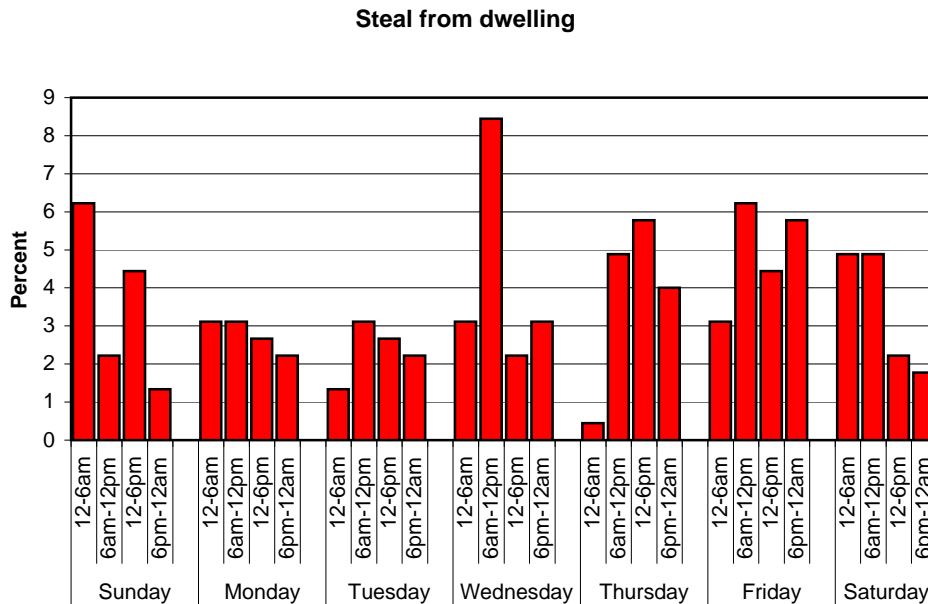
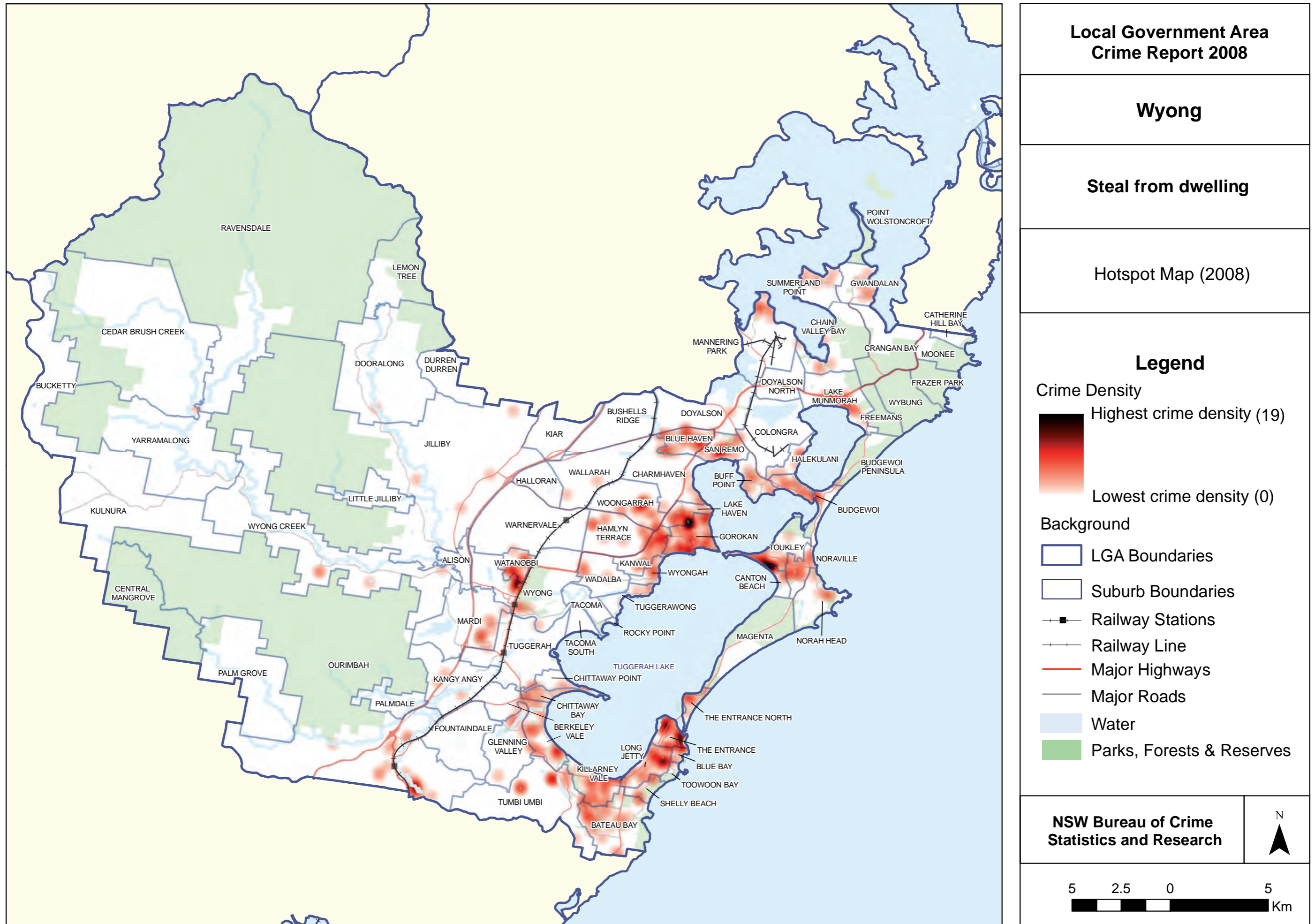


Figure 30. Hotspot map for steal from dwelling incidents



11.11 Malicious damage to property

- Proportion of incidents by month
- Proportion of incidents by time of day, day of week
- Hotspot map

Figure 31. Proportion of malicious damage to property incidents by month

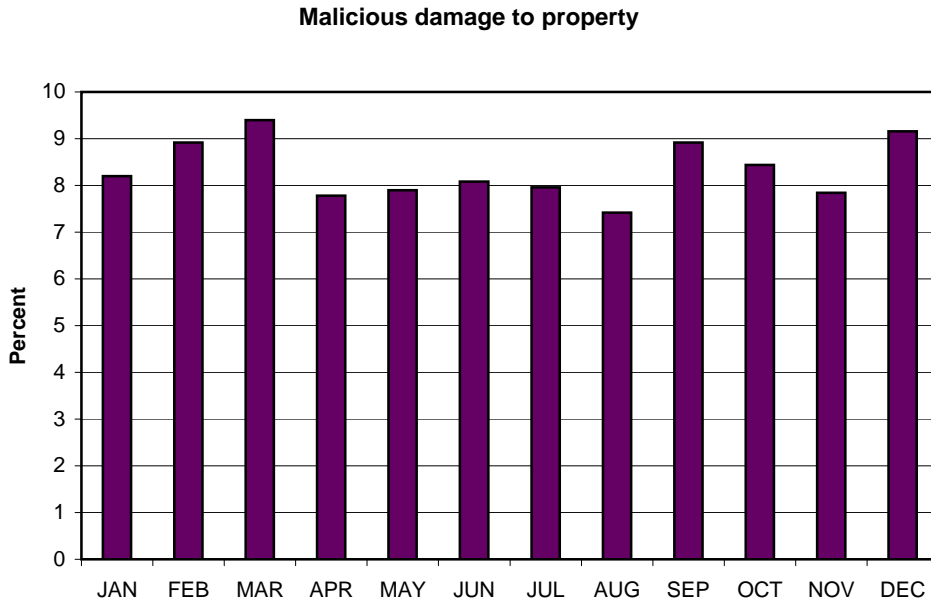


Figure 32. Proportion of malicious damage to property incidents by time of day and day of week

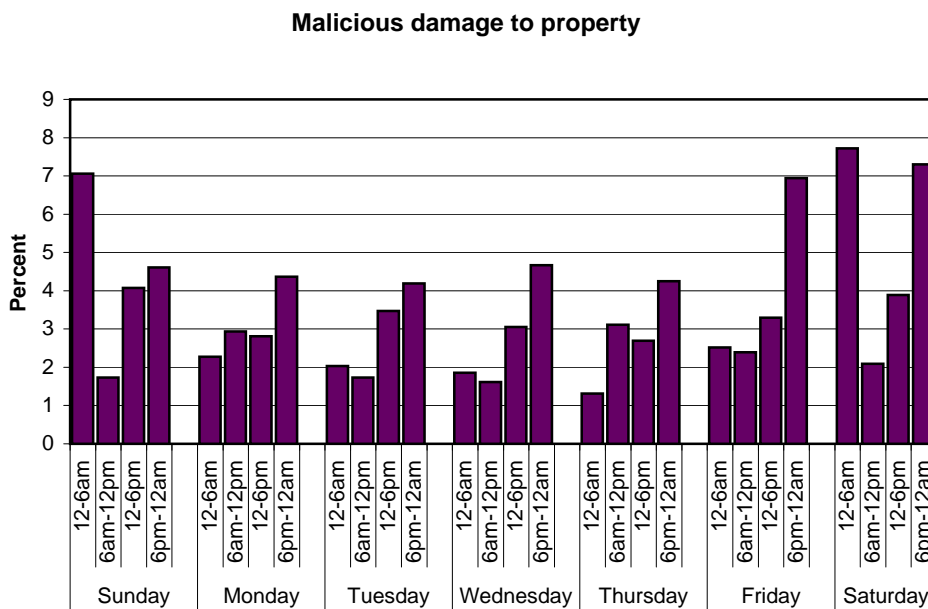
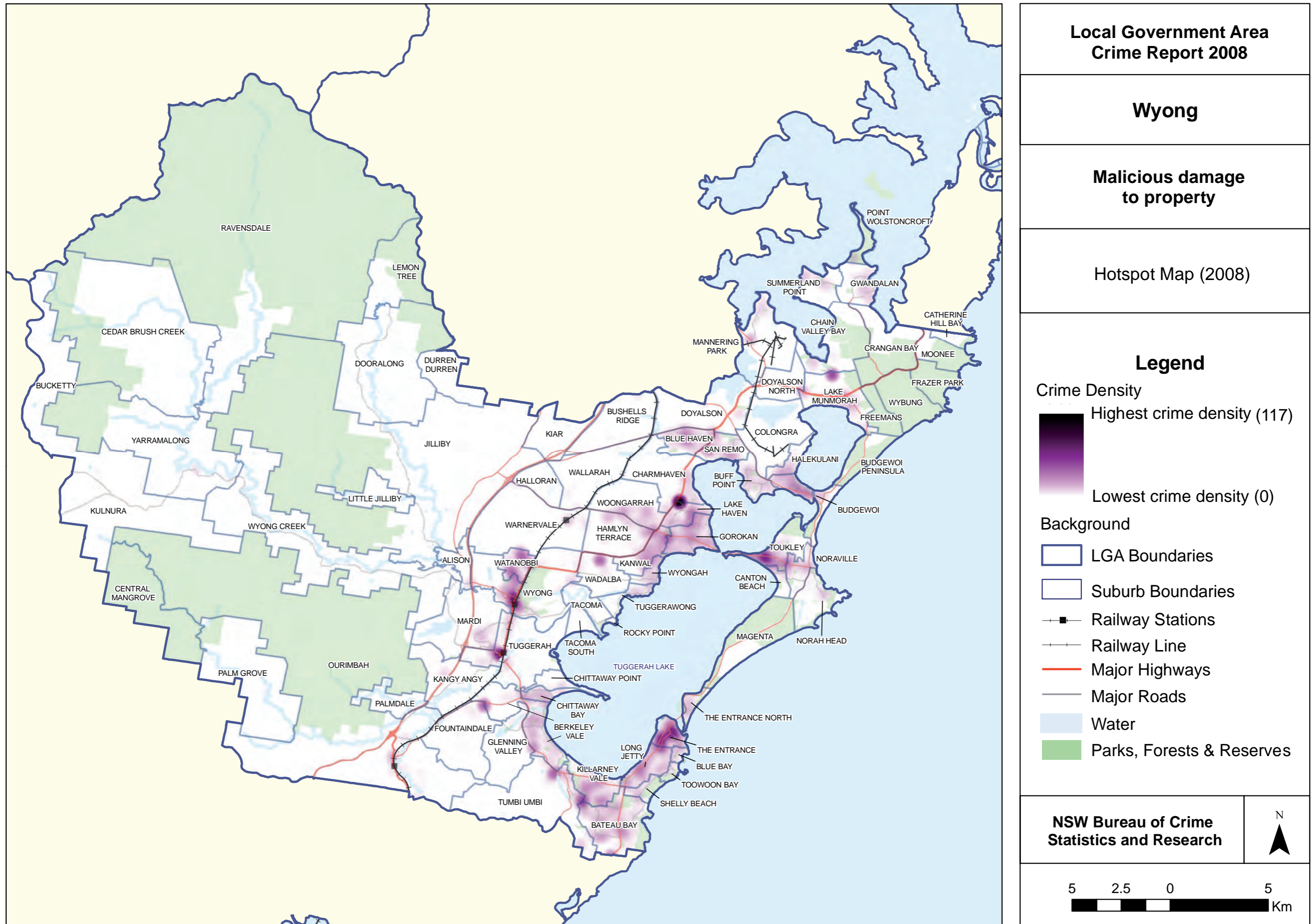


Figure 33. Hotspot map for malicious damage to property incidents



12. SELECTED OFFENCES BY PREMISES TYPE

Table 2. Number of incidents of selected offences recorded by NSW Police in the Wyong LGA, by premises type, 2008

Premises* type	Assault - domestic violence related	Assault - non-domestic violence related	Sexual offences	Robbery	Break and enter - non- dwelling	Motor vehicle theft	Steal from motor vehicle	Steal from person	Malicious damage to property
Adult entertainment	0	0	0	0	1	0	0	0	5
Financial institution	0	0	0	2	0	0	0	0	4
Office	0	3	0	0	15	1	3	0	51
Personal services	0	3	0	0	16	0	0	0	20
Retail/wholesale	14	73	5	7	128	22	36	26	349
Carpark	8	25	7	0	0	135	427	1	167
Education	1	24	6	0	107	0	4	4	242
Health	1	8	1	0	9	3	3	0	21
Industrial	0	1	0	0	42	3	16	0	22
Law enforcement	0	3	0	0	0	0	2	0	28
Licensed premises	13	127	3	5	25	14	11	24	46
Marine transport	0	1	0	0	0	0	0	0	1
Outdoor/public place	46	316	25	33	10	157	369	24	452
Recreation	1	12	0	0	40	0	3	3	49
Religious	0	0	1	0	7	0	0	0	10
Residential	680	263	181	11	26	257	706	5	1521
Rural Industry	0	0	0	0	6	5	0	0	1
Public Transport	3	42	1	6	3	3	21	7	37
Utilities	0	2	0	0	9	0	7	0	12
Vehicle	0	0	0	0	0	0	7	0	1
Unknown	0	1	1	0	0	0	2	0	0
Total	767	904	231	64	444	600	1,617	94	3,039

* see appendix 2 for second-level premises type definitions

13. AGE AND GENDER OF VICTIMS

Table 3. Age and gender of victims of selected offences recorded by NSW Police in the Wyong LGA, 2008

<i>Victim* gender</i>	<i>Victim* age</i>	<i>Assault - domestic violence related</i>	<i>Assault - non-domestic violence related</i>	<i>Robbery</i>	<i>Steal from person</i>
Male	< 18	50	144	15	9
	18 - 19	16	60	7	6
	20 - 29	69	167	11	9
	30 - 39	58	153	10	5
	40 - 49	56	117	6	4
	50 - 59	27	57	1	3
	60 +	24	31	6	1
	Missing / unknown	1	8	0	0
Total		301	737	56	37
Female	< 18	54	107	10	5
	18 - 19	34	24	1	9
	20 - 29	160	63	6	11
	30 - 39	152	46	2	6
	40 - 49	108	51	2	10
	50 - 59	41	19	2	5
	60 +	24	5	0	16
	Missing / unknown	2	1	0	0
Total		575	316	23	62
Unknown	< 18	0	0	0	0
	18 - 19	0	0	0	0
	20 - 29	0	1	0	0
	30 - 39	0	0	0	0
	40 - 49	0	1	0	0
	50 - 59	0	0	0	0
	60 +	0	0	0	0
	Missing / unknown	0	1	11	2
Total		0	3	11	2
Total	< 18	104	251	25	14
	18 - 19	50	84	8	15
	20 - 29	229	231	17	20
	30 - 39	210	199	12	11
	40 - 49	164	169	8	14
	50 - 59	68	76	3	8
	60 +	48	36	6	17
	Missing / unknown	3	10	11	2
Total		876	1,056	90	101

* This table does not give a count of unique individuals (see Note 8, page 9 for more information).

14. AGE AND GENDER OF PERSONS OF INTEREST

Table 4. Age and gender of persons of interest (POIs) proceeded against by NSW Police in relation to criminal incidents occurring in the Wyong LGA, 2008

POI* gender	POI* age	Assault - domestic violence related	Assault - non-domestic violence related	Robbery	Break and enter - dwelling#	Break and enter - non-vehicle theft#	Motor vehicle	Steal from retail store	Steal from person#	Malicious damage to property	
Male	10 - 17	20	27	10	24	30	22	8	75	1	126
	18 - 19	16	38	4	9	4	6	6	20	0	49
	20 - 29	102	64	3	14	8	4	6	21	1	101
	30 - 39	135	43	3	22	8	4	1	14	3	59
	40 +	75	25	1	3	0	0	0	21	0	36
	Missing / unknown	0	0	0	0	0	0	2	1	0	2
	Total	348	197	21	72	50	36	23	152	5	373
Female	10 - 17	10	22	4	5	5	3	0	103	0	17
	18 - 19	4	4	1	0	0	0	1	13	0	10
	20 - 29	16	12	0	3	0	0	0	18	1	11
	30 - 39	15	11	1	2	0	1	0	24	0	14
	40 +	17	9	0	0	0	0	1	33	0	12
	Missing / unknown	0	1	0	0	0	0	0	0	0	1
	Total	62	59	6	10	5	4	2	191	1	65
Unknown	10 - 17	0	0	0	0	0	0	0	0	0	0
	18 - 19	0	0	0	0	0	0	0	0	0	0
	20 - 29	0	0	0	0	0	0	0	0	0	0
	30 - 39	0	0	0	0	0	0	0	0	0	0
	40 +	0	0	0	0	0	0	0	0	0	0
	Missing / unknown	0	0	0	0	0	0	0	0	0	0
	Total	0	0	0	0	0	0	0	0	0	0
Total	10 - 17	30	49	14	29	35	25	8	178	1	143
	18 - 19	20	42	5	9	4	6	7	33	0	59
	20 - 29	118	76	3	17	8	4	6	39	2	112
	30 - 39	150	54	4	24	8	5	1	38	3	73
	40 +	92	34	1	3	0	0	1	54	0	48
	Missing / unknown	0	1	0	0	0	0	2	1	0	3
	Total	410	256	27	82	55	40	25	343	6	438

* This table does not give a count of unique individuals. (see Note 8 page 9 for more information).
POI characteristics should be treated cautiously for offence types that have low clear-up rates.

15. ALCOHOL-RELATED CRIME

Table 5. Number and proportion of selected offences flagged as alcohol related by NSW Police in the Wyong LGA, 2008

<i>Offence type</i>		<i>Alcohol Related*</i>	<i>Not Alcohol Related</i>	<i>Total</i>
Assault - domestic violence related	No.	356	411	767
	%	46	54	100
Assault - non-domestic violence related	No.	420	484	904
	%	46	54	100
Robbery	No.	24	40	64
	%	38	63	100
Break and enter - dwelling	No.	25	1,048	1,073
	%	2	98	100
Break and enter - non-dwelling	No.	16	428	444
	%	4	96	100
Motor vehicle theft	No.	23	577	600
	%	4	96	100
Steal from motor vehicle	No.	13	1,604	1,617
	%	1	99	100
Steal from retail store	No.	32	378	410
	%	8	92	100
Steal from person	No.	14	80	94
	%	15	85	100
Malicious damage to property	No.	397	2,642	3,039
	%	13	87	100

** It is difficult for police to make a determination about the involvement of alcohol in a criminal incident if the identity of the offender is not known. This is common for many property offences and these data should therefore be interpreted with this in mind (see Note 9, page 10 for more information)*

APPENDIX 1: OFFENCE CLASSIFICATIONS

This appendix broadly defines the offence classifications used in this report. As mentioned in Section 5, the offence classification used by the Bureau of Crime Statistics and Research is based on the Australian Bureau of Statistics' Australian Standard Offence Classification (ABS 1997 Cat. No. 1234.0).

This appendix includes the NSW Police Force incident categories that comprise the classifications used in this report.

MURDER

The Australian Bureau of Statistics (ABS) defines *murder* as "the unlawful killing of another person where there is either the intent to kill, the intent to cause grievous bodily harm, with the knowledge that it was probable that death or grievous bodily harm would occur (reckless indifference to life), or without intent to kill in the course of committing a crime (felony murder)".

Incidents classified in this report as *murder* include only the police incident category of murder.

ASSAULT

The ABS defines *assault* as "the direct (and immediate/confrontational) infliction of force, injury or violence upon a person or persons or the direct (and immediate/confrontational) threat of force, injury or violence where there is an apprehension that the threat could be enacted".

Incidents classified by the Bureau of Crime Statistics and Research as *assault* include the following police incident categories:

- actual bodily harm
- common assault
- assault officer
- grievous bodily harm (including malicious wounding) and
- shoot with intent other than to murder.

Assault can be flagged by police as being *domestic violence related* or *alcohol related*.

SEXUAL ASSAULT

The 'sexual assault' category employed by the Bureau of Crime Statistics and Research cannot be directly compared with the definition employed by the ABS.

Incidents classified by the Bureau of Crime Statistics and Research as sexual assault include the following police incident categories:

- sexual assault
- aggravated sexual assault and
- assault with intent to have sexual intercourse.

INDECENT ASSAULT, ACT OF INDECENCY AND OTHER SEXUAL OFFENCES

The 'indecent assault, act of indecency and other sexual offences' category employed by the Bureau of Crime Statistics and Research cannot be directly compared with the sexual offence definition employed by the ABS.

Incidents classified by the Bureau of Crime Statistics and Research as indecent assault, act of indecency and other sexual offences include the following police incident categories:

- act of indecency
- aggravated act of indecency
- aggravated indecent assault
- bestiality
- carnal knowledge
- incest
- indecent assault
- indecent communication
- peep or pry
- wilful and obscene exposure and
- other sexual offence.

ROBBERY

The ABS defines *robbery* as "the unlawful taking of property, with intent to permanently deprive the owner of the property, from the immediate possession, control, custody or care of a person, accompanied by the use, and/or threatened use of immediate force or violence".

Incidents classified by the Bureau of Crime Statistics and Research as *robbery* include the following police incident categories:

- armed robbery
- demand money with menaces
- robbery
- robbery with aggravation
- robbery with wounding and
- other robbery.

In this and other publications by the Bureau of Crime Statistics and Research, *robbery* is further categorised as *robbery without a weapon*, *robbery with a firearm* or *robbery with a weapon not a firearm*.

BREAK AND ENTER

The ABS defines *break and enter* (and *unlawful entry with intent/burglary*) as “the unlawful entry of a structure with the intent to commit an offence where the entry is either forced or unforced”.

Incidents classified by the Bureau of Crime Statistics and Research as *break and enter* include the following police incident categories:

- break, enter and steal
- break and enter with intent to steal
- break, enter and commit other felony and
- break and enter with intent to commit other felony.

Break and enter incidents can occur in *dwellings* or *non-dwellings*. *Dwellings* include residential premises such as houses, home units or villas. *Non-dwellings* include premises where people do not usually reside such as retail premises, wholesale premises, educational premises, industrial premises, recreational premises etc.

THEFT AND STEALING

The ABS defines *theft* as “the unlawful taking or obtaining of money or goods not involving the use of force, threat of force or violence, coercion or deception, with the intent to permanently or temporarily deprive the owner or possessor of the use of the money or goods, or the receiving or handling of money or goods obtained unlawfully”.

Motor vehicle theft

The ABS defines *motor vehicle theft* as “the taking of another person’s motor vehicle illegally and without permission with the intent of permanently depriving the owner or possessor of the use of the motor vehicle.”

Incidents classified by the Bureau of Crime Statistics and Research as *motor vehicle theft* include only the police incident category ‘stolen vehicle/vessel’.

Steal from motor vehicle

The ABS defines *theft of motor vehicle parts or contents* as “the unlawful taking of parts or contents from another person’s motor vehicle illegally and without permission”.

Incidents classified by the Bureau of Crime Statistics and Research as *steal from motor vehicle* include only the police incident category ‘steal from motor vehicle’.

Steal from retail store

The ABS defines *theft from retail premises* as “theft from retail premises of goods for sale, other than motor vehicles, by avoiding payment for those goods. This may also include the taking from retail premises of items not for sale, such as tools, equipment or furnishings”.

Incidents classified by the Bureau of Crime Statistics and Research as *steal from retail store* include only the police incident category ‘steal from retail store’.

Steal from dwelling

Steal from dwelling incidents are not separately defined by the ABS but typically involve stealing from parts of residential premises without breaking into the direct living space (e.g. stealing from verandas, balconies, driveways, sheds, gardens, clotheslines, carports, garages).

Incidents classified by the Bureau of Crime Statistics and Research as *steal from dwelling* include the following police incident categories:

- steal from dwelling and
- other stealing.

Steal from person

The ABS defines *theft from person* as “taking money or personal goods, whether from the immediate possession or control of a person without the use of force, threat of force or violence or putting the victim in fear”.

Incidents classified by the Bureau of Crime Statistics and Research as *steal from person* include only those police incident categories defined as ‘steal from person’.

FRAUD

The Bureau of Crime Statistics and Research fraud category is most closely aligned with the ABS *fraud, forgery or false financial instruments*, defined as “inducing a course of action, by deceit or other dishonest conduct, with the intent to obtain money or other benefit or to evade a liability. The making, use or possession of a forged financial instrument with an intention to obtain an advantage”.

Incidents classified by the Bureau of Crime Statistics and Research as *fraud* include the following police incident categories:

- company corporate offence
- computer crime
- copyright/intellectual property/trademark offences
- corrupt commission/practices
- corrupt payment (receive or pay)
- counterfeit currency
- deception offence
- embezzlement
- fail to pay
- fraudulent appropriation
- larceny clerk/servant/bailee
- make/use false instruments
- misappropriate cheque/funds
- possess false instruments
- publish false misleading statement
- receiving (fraud related) and
- other fraud.

MALICIOUS DAMAGE TO PROPERTY

The ABS defines *property damage and environmental pollution* as “the wilful and unlawful destruction, damage or defacement of public or private property or the pollution of property or a definable entity held in common by the community”.

Incidents classified by the Bureau of Crime Statistics and Research as *malicious damage to property* include the following Police incident categories:

- graffiti
- malicious damage to property
- public place – damage fountain/wall etc. and
- public place – damage shrine/monument.

APPENDIX 2: SECOND-LEVEL PREMISES TYPE CATEGORIES

Most of the premises types listed in Table 2 have a further definitional level. These are listed below.

Adult entertainment includes brothels, declared common gaming house, declared disorderly house, escort agency, gambling club, gaming house, homosexual club, indecent movies, indecent publication, massage parlour, sex shop, other.

Financial institution includes bank, building society, credit union, health insurance, insurance/superannuation, moneylender, stock exchange etc., other.

Office includes consulate, council chambers, electorate office, government office, parliament house, private office, real estate agency, other.

Personal services includes barber, beauty salon, dry cleaning, funeral parlour, hairdressing, laundromat, photographic studio, tailor, tattoo shop, other.

Retail/wholesale includes second hand dealer, art and craft, art gallery, boat retailer, book shop, bread shop, butcher, café, cafeteria, car yard, chemist, clothing shop, department store, electronic/sales, fabric shop, florist, fruit and veg shop, furniture store, general store, general wholesale, hardware store, homeware store, jewellery shop, kiosk, markets, milkbar, motor dealer, music store, newsagent, nursery, paper stand, pawnbrokers, photography shop, restaurant, saleyard, service station, shoe shop, shopping complex, showroom, sports store, stationery, supermarket, supermarket servo, takeaway food, tobacconist, toy store, travel agent, video hire/sales, wrecking yard, other.

Carpark includes beach parking area, business/commercial, commuter (excl railway), entertainment premises, hospital, parking station, railway, residential, restaurant/take away, shopping centre, sports ground, other.

Education includes CAE, conservatorium of music, library, preschool, school, TAFE, university, other.

Health includes ambulance station, baby health centre, dentist surgery, doctor surgery, drug referral centre, drug rehabilitation centre, hospital, laboratory, medical centre, medically supervised injecting room, nursing home, optical sales/optometrist, psychiatric centre, vet surgery, other.

Industrial includes building site, building site/shed, factory, mill, mine, mineral claim, petrol depot, quarry, refinery, repository, storage, warehouse, workshop, other.

Law enforcement includes call box, correctional centre, court, customs, defence, detention centre, police station, other police building, remand centre, other.

Licensed premises includes bottle shop, club, hotel/pub, licensed restaurant, nightclub, wine bar, other.

Marine transport includes boatshed, container terminal, dock/port, jetty, marina, public passenger terminal, wharf, other.

Outdoor/public place includes air, anchorage, bay, beach, billabong, bus stop, bushland/scrub, camping area, caravan park, cemetery, creek, crown land, crown land/national park, dressing shed, footpath, forest, harbour, lake, national park, ocean, oyster farm, park, public garden, public toilet, reserve, river, road/street, sea, state recreation area, taxi rank, vacant block, other.

Recreation includes amphitheatre, amusement park, art gallery (excl retail), blue light disco, bowling alley, casino, cinema, circus, club, dance studio, golf course, gymnasium, hall, lotteries office, museum, pavilion, racecourse, showground, skating rink, sporting centre, sports ground, squash court, swimming pool (public), Sydney entertainment centre, tv/film studio, tennis court (public), theatre live, Totalizator Agency Board, video arcade, wildlife sanctuary, zoo, other.

Religious includes cathedral, chapel, church, convent, monastery, mosque, presbytery, rectory, synagogue, temple, other.

Residential includes accommodation, non-dwelling, dwelling.

Rural industry includes barn, dam (private), farmland, machinery shed, orchard, paddock, shearers quarters, shearing shed, silo, stock & station agent, stockyard, storage shed, wool/hide/skin, other.

Transport includes airport, bus depot, bus passenger terminal, freight depot, rail building, rail station, railway siding, railway terminal, other.

Utilities includes council depot, dam/water supply, electricity, fire station, gas, lighthouse, mail exchange, pollution works, post office, reservoir, sewerage & stormwater drains, telecom depot, telephone booth, other.

Vehicle includes aircraft, aquacab, bus, ferry, private marine vessel, other passenger marine vessel, private motor vehicle, taxi, train, other vehicle.

local government area
crime report series

wyong 2008