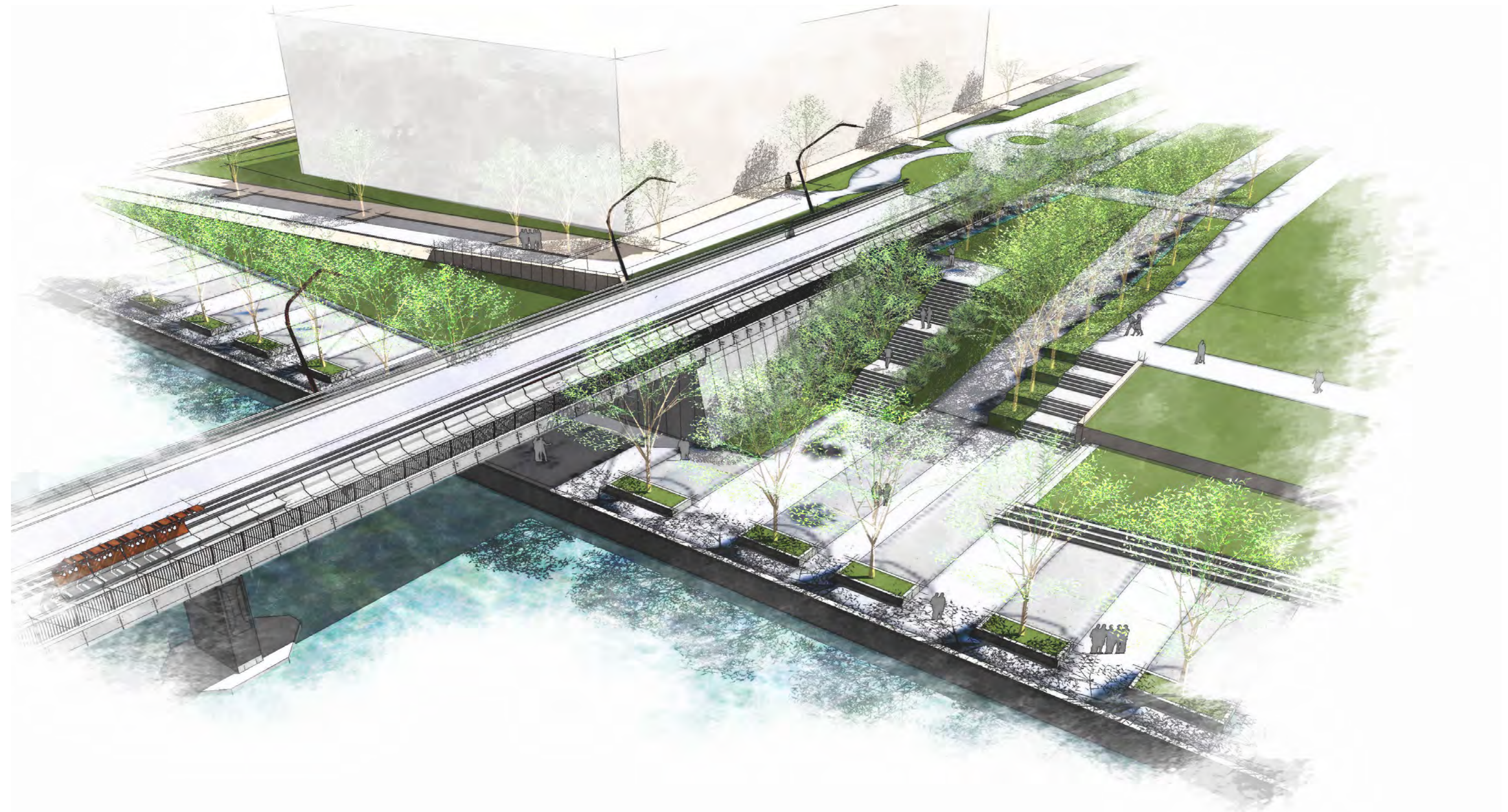


ARTIST IMPRESSION OF POTENTIAL OPEN SPACE TREATMENTS AND RELATIONSHIP WITH PROPOSED BRIDGE AND ITS LANDING AT RHODES.

*Image is indicative only, public domain design is subject to a separate detailed design and approval process by others.*



INDICATIVE PLAN ONLY



ARTIST IMPRESSION OF POTENTIAL OPEN SPACE TREATMENTS AND RELATIONSHIP WITH PROPOSED BRIDGE AND ITS LANDING AT WENTWORTH POINT.

*Image is indicative only, public domain design is subject to a separate detailed design and approval process by others.*



INDICATIVE PLAN ONLY