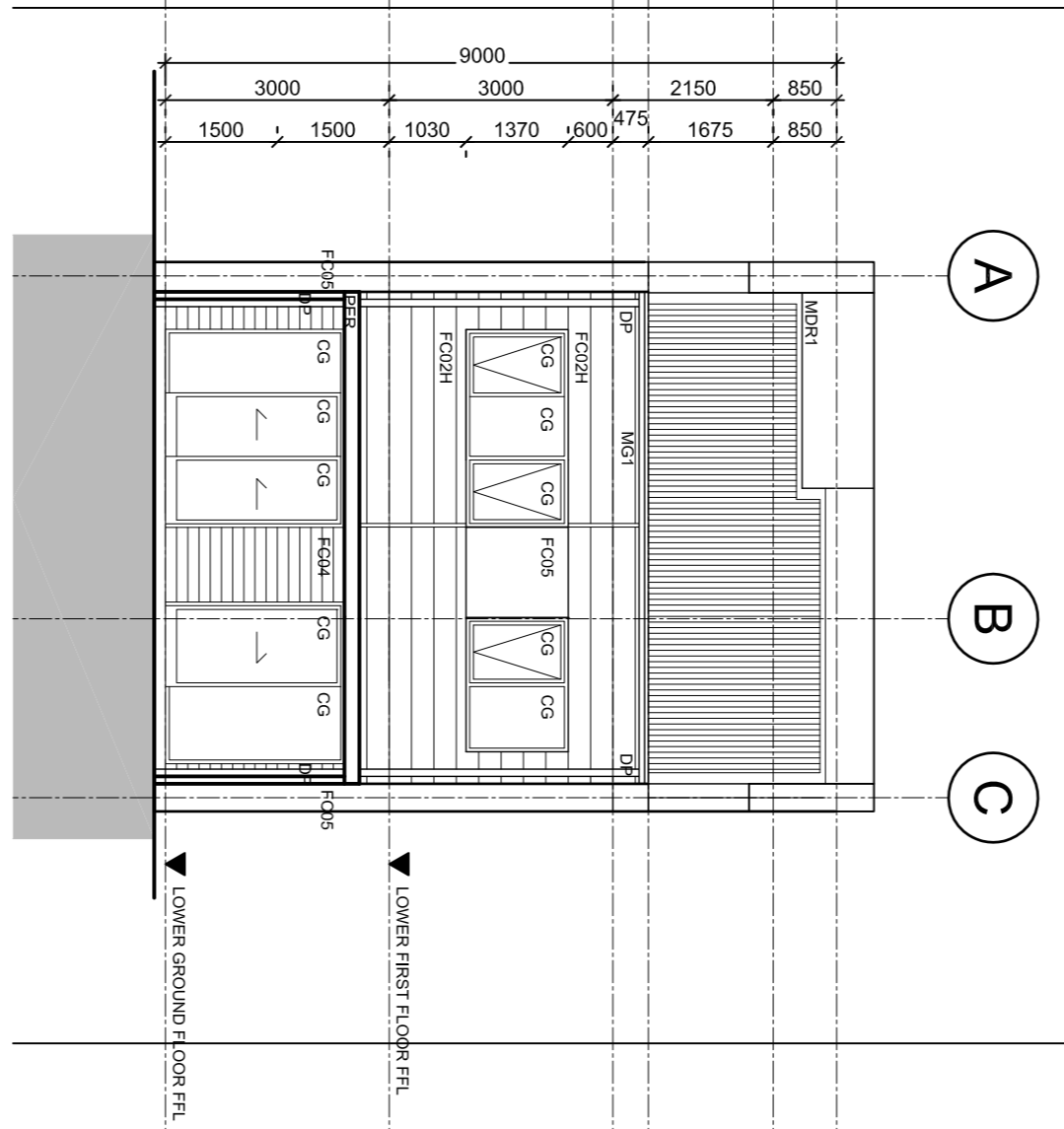
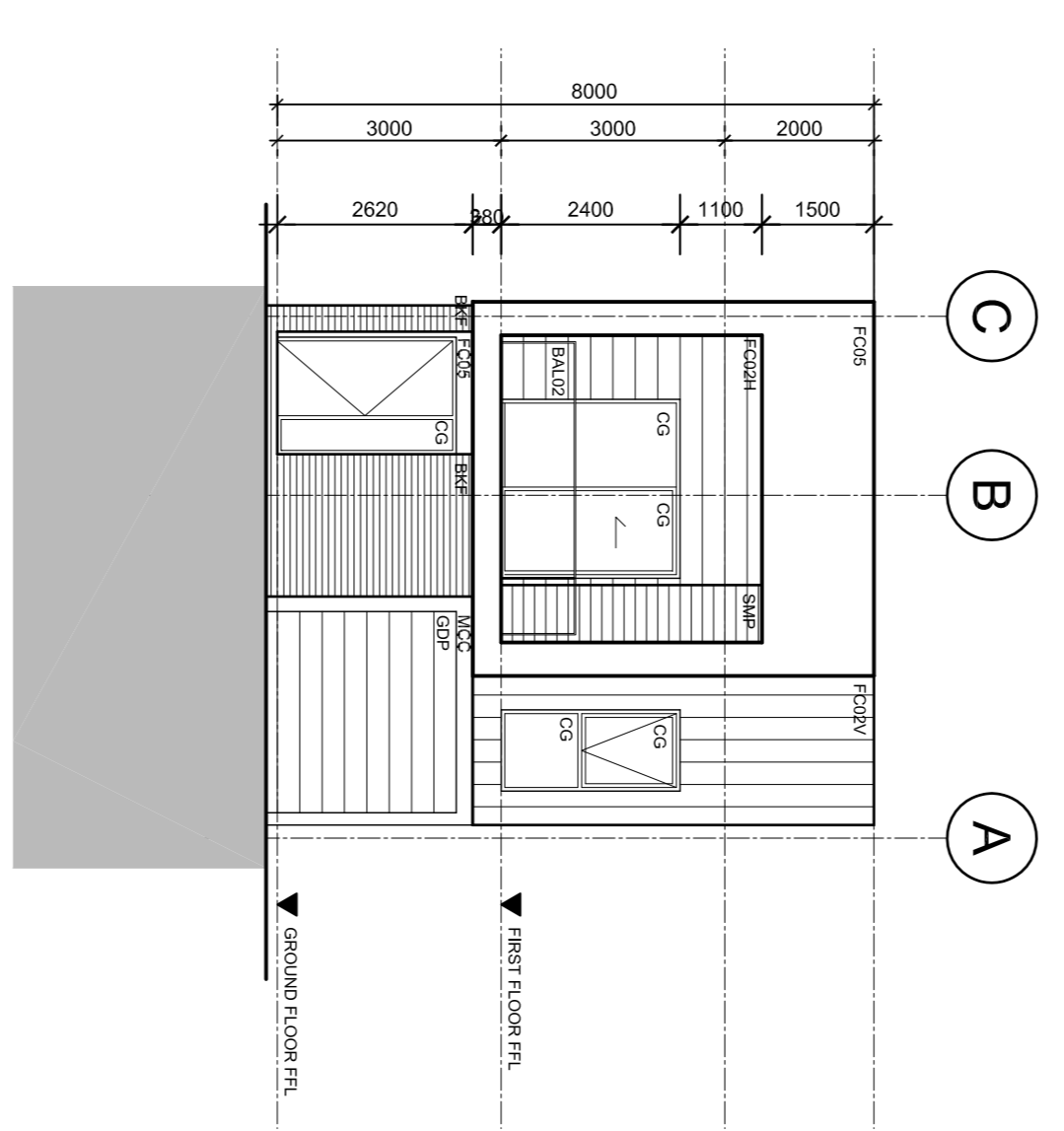
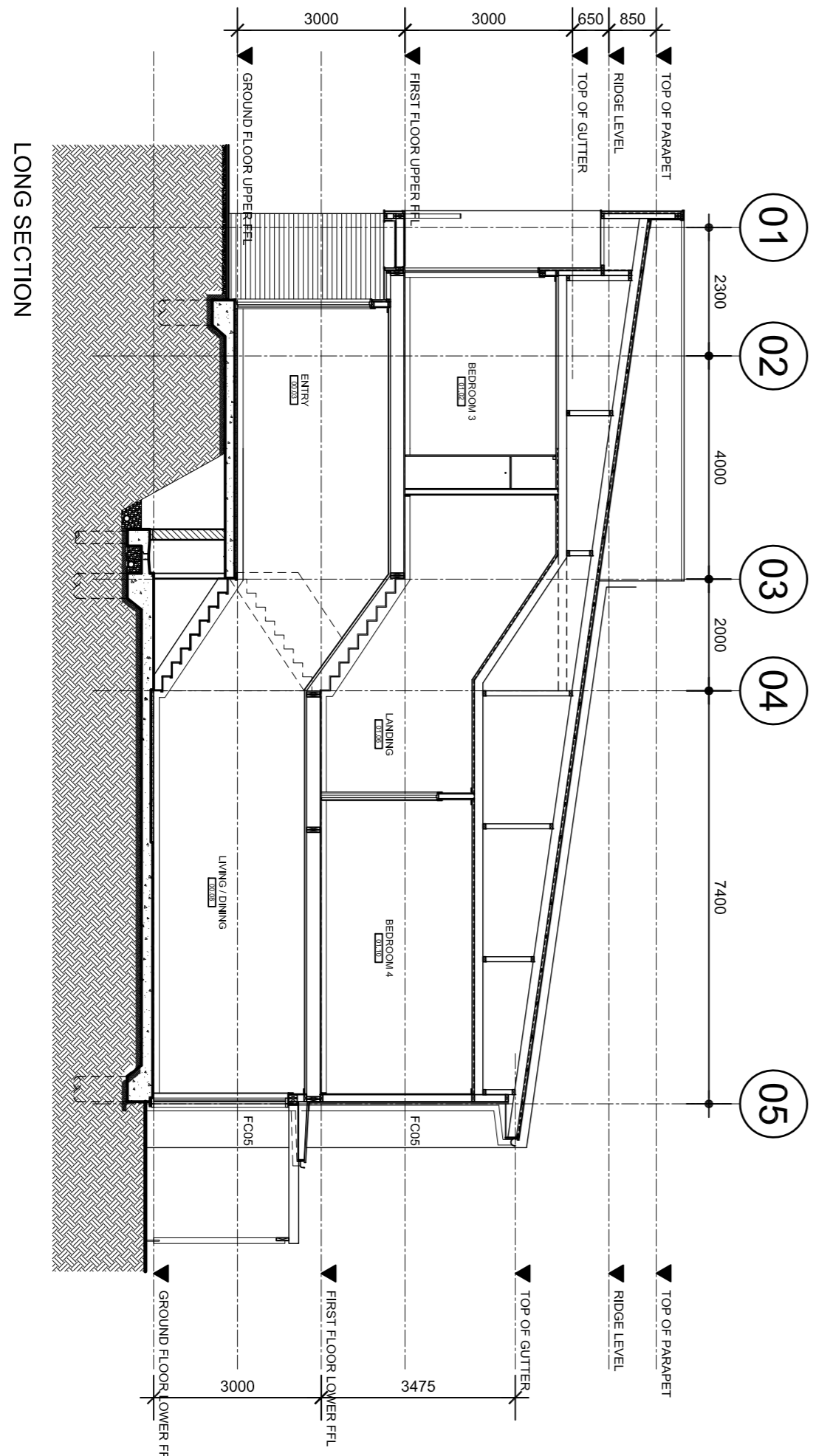


ABBREVIATIONS LEGEND:

WALLS	AGS : ALUMINIUM GLAZED SYSTEM	BAU1 : BAULSTRASSE - TYPE 1	GENERAL	MR : MIRROR	FLOORS
AGF : BRICKWORK FACE	BAU2 : STEEL PLATE BAULSTRASSE	FE : EXHAUST FAN	RWO : RAINWATER OUTLET	MRB : MIRROR	CFS : CONCRETE FINISHED-SLAB
BRF : BRICKWORK BENDER AND	BAU3 : BAULSTRASSE - TYPE 2	USR : UNDERSTAIR ROOF	ACU : AIRCONDITIONING CONDENSER	DP : DOWNPIPE-COLORBOND	DP : EXPANSION JOINT
BRP : CONCRETE BLOCK WORK -	BAU4 : BAULSTRASSE - TYPE 3	CL : CLOTHES LINE	ELB : ELECTRICAL DISTRIBUTION BOARD	EJ : EXTERNAL TILT UP	CFT1 : CERAMIC FLOOR TILES
CC : PAINT FINISH FRAMED CLEAR	FINISH	GLS : GAS REGULATOR SET	GLS : GAS REGULATOR SET	EDP : EXTERNAL DOWN TILT UP	CFP : CERAMIC FLANGED CHANNEL
CG : GLAZING	FC01 : FIBRE CEMENT CLADDING	GRS : GRS	GRS : GRS	FC : FINISHED	FC : FINISHED
CWTT : CERAMIC WALL TILES	FC02 : FIBRE CEMENT CLADDING WIRE	GRS : GRS	GRS : GRS		
MCC : METAL INFL PANEL	FC03 : FIBRE CEMENT CLADDING WIRE	GRS : GRS	GRS : GRS		
MFB : METAL FINED BLADE	FC04 : FIBRE CEMENT CLADDING WIRE	GRS : GRS	GRS : GRS		
MFSH : METAL SCREEN - FIXED HORIZONTAL	FC05 : FIBRE CEMENT CLADDING WIRE	GRS : GRS	GRS : GRS		
MFSV : METAL SCREEN - FIXED VERTICAL	FC06 : FIBRE CEMENT CLADDING WIRE	GRS : GRS	GRS : GRS		
MFSH : METAL SCREEN - FIXED HORIZONTAL	FC07 : FIBRE CEMENT CLADDING WIRE	GRS : GRS	GRS : GRS		
MFSV : METAL SCREEN - FIXED VERTICAL	FC08 : FIBRE CEMENT CLADDING WIRE	GRS : GRS	GRS : GRS		
MFSH : METAL SCREEN - FIXED HORIZONTAL	FC09 : FIBRE CEMENT CLADDING WIRE	GRS : GRS	GRS : GRS		
MFSV : METAL SCREEN - FIXED VERTICAL	FC10 : FIBRE CEMENT CLADDING WIRE	GRS : GRS	GRS : GRS		
MFSH : METAL SCREEN - FIXED HORIZONTAL	FC11 : FIBRE CEMENT CLADDING WIRE	GRS : GRS	GRS : GRS		
MFSV : METAL SCREEN - FIXED VERTICAL	FC12 : FIBRE CEMENT CLADDING WIRE	GRS : GRS	GRS : GRS		
MFSH : METAL SCREEN - FIXED HORIZONTAL	FC13 : FIBRE CEMENT CLADDING WIRE	GRS : GRS	GRS : GRS		
MFSV : METAL SCREEN - FIXED VERTICAL	FC14 : FIBRE CEMENT CLADDING WIRE	GRS : GRS	GRS : GRS		
MFSH : METAL SCREEN - FIXED HORIZONTAL	FC15 : FIBRE CEMENT CLADDING WIRE	GRS : GRS	GRS : GRS		
MFSV : METAL SCREEN - FIXED VERTICAL	FC16 : FIBRE CEMENT CLADDING WIRE	GRS : GRS	GRS : GRS		
MFSH : METAL SCREEN - FIXED HORIZONTAL	FC17 : FIBRE CEMENT CLADDING WIRE	GRS : GRS	GRS : GRS		
MFSV : METAL SCREEN - FIXED VERTICAL	FC18 : FIBRE CEMENT CLADDING WIRE	GRS : GRS	GRS : GRS		
MFSH : METAL SCREEN - FIXED HORIZONTAL	FC19 : FIBRE CEMENT CLADDING WIRE	GRS : GRS	GRS : GRS		
MFSV : METAL SCREEN - FIXED VERTICAL	FC20 : FIBRE CEMENT CLADDING WIRE	GRS : GRS	GRS : GRS		
MFSH : METAL SCREEN - FIXED HORIZONTAL	FC21 : FIBRE CEMENT CLADDING WIRE	GRS : GRS	GRS : GRS		
MFSV : METAL SCREEN - FIXED VERTICAL	FC22 : FIBRE CEMENT CLADDING WIRE	GRS : GRS	GRS : GRS		
MFSH : METAL SCREEN - FIXED HORIZONTAL	FC23 : FIBRE CEMENT CLADDING WIRE	GRS : GRS	GRS : GRS		
MFSV : METAL SCREEN - FIXED VERTICAL	FC24 : FIBRE CEMENT CLADDING WIRE	GRS : GRS	GRS : GRS		
MFSH : METAL SCREEN - FIXED HORIZONTAL	FC25 : FIBRE CEMENT CLADDING WIRE	GRS : GRS	GRS : GRS		
MFSV : METAL SCREEN - FIXED VERTICAL	FC26 : FIBRE CEMENT CLADDING WIRE	GRS : GRS	GRS : GRS		
MFSH : METAL SCREEN - FIXED HORIZONTAL	FC27 : FIBRE CEMENT CLADDING WIRE	GRS : GRS	GRS : GRS		
MFSV : METAL SCREEN - FIXED VERTICAL	FC28 : FIBRE CEMENT CLADDING WIRE	GRS : GRS	GRS : GRS		
MFSH : METAL SCREEN - FIXED HORIZONTAL	FC29 : FIBRE CEMENT CLADDING WIRE	GRS : GRS	GRS : GRS		
MFSV : METAL SCREEN - FIXED VERTICAL	FC30 : FIBRE CEMENT CLADDING WIRE	GRS : GRS	GRS : GRS		
MFSH : METAL SCREEN - FIXED HORIZONTAL	FC31 : FIBRE CEMENT CLADDING WIRE	GRS : GRS	GRS : GRS		
MFSV : METAL SCREEN - FIXED VERTICAL	FC32 : FIBRE CEMENT CLADDING WIRE	GRS : GRS	GRS : GRS		
MFSH : METAL SCREEN - FIXED HORIZONTAL	FC33 : FIBRE CEMENT CLADDING WIRE	GRS : GRS	GRS : GRS		
MFSV : METAL SCREEN - FIXED VERTICAL	FC34 : FIBRE CEMENT CLADDING WIRE	GRS : GRS	GRS : GRS		
MFSH : METAL SCREEN - FIXED HORIZONTAL	FC35 : FIBRE CEMENT CLADDING WIRE	GRS : GRS	GRS : GRS		
MFSV : METAL SCREEN - FIXED VERTICAL	FC36 : FIBRE CEMENT CLADDING WIRE	GRS : GRS	GRS : GRS		
MFSH : METAL SCREEN - FIXED HORIZONTAL	FC37 : FIBRE CEMENT CLADDING WIRE	GRS : GRS	GRS : GRS		
MFSV : METAL SCREEN - FIXED VERTICAL	FC38 : FIBRE CEMENT CLADDING WIRE	GRS : GRS	GRS : GRS		
MFSH : METAL SCREEN - FIXED HORIZONTAL	FC39 : FIBRE CEMENT CLADDING WIRE	GRS : GRS	GRS : GRS		
MFSV : METAL SCREEN - FIXED VERTICAL	FC40 : FIBRE CEMENT CLADDING WIRE	GRS : GRS	GRS : GRS		
MFSH : METAL SCREEN - FIXED HORIZONTAL	FC41 : FIBRE CEMENT CLADDING WIRE	GRS : GRS	GRS : GRS		
MFSV : METAL SCREEN - FIXED VERTICAL	FC42 : FIBRE CEMENT CLADDING WIRE	GRS : GRS	GRS : GRS		
MFSH : METAL SCREEN - FIXED HORIZONTAL	FC43 : FIBRE CEMENT CLADDING WIRE	GRS : GRS	GRS : GRS		
MFSV : METAL SCREEN - FIXED VERTICAL	FC44 : FIBRE CEMENT CLADDING WIRE	GRS : GRS	GRS : GRS		
MFSH : METAL SCREEN - FIXED HORIZONTAL	FC45 : FIBRE CEMENT CLADDING WIRE	GRS : GRS	GRS : GRS		
MFSV : METAL SCREEN - FIXED VERTICAL	FC46 : FIBRE CEMENT CLADDING WIRE	GRS : GRS	GRS : GRS		
MFSH : METAL SCREEN - FIXED HORIZONTAL	FC47 : FIBRE CEMENT CLADDING WIRE	GRS : GRS	GRS : GRS		
MFSV : METAL SCREEN - FIXED VERTICAL	FC48 : FIBRE CEMENT CLADDING WIRE	GRS : GRS	GRS : GRS		
MFSH : METAL SCREEN - FIXED HORIZONTAL	FC49 : FIBRE CEMENT CLADDING WIRE	GRS : GRS	GRS : GRS		
MFSV : METAL SCREEN - FIXED VERTICAL	FC50 : FIBRE CEMENT CLADDING WIRE	GRS : GRS	GRS : GRS		
MFSH : METAL SCREEN - FIXED HORIZONTAL	FC51 : FIBRE CEMENT CLADDING WIRE	GRS : GRS	GRS : GRS		
MFSV : METAL SCREEN - FIXED VERTICAL	FC52 : FIBRE CEMENT CLADDING WIRE	GRS : GRS	GRS : GRS		
MFSH : METAL SCREEN - FIXED HORIZONTAL	FC53 : FIBRE CEMENT CLADDING WIRE	GRS : GRS	GRS : GRS		
MFSV : METAL SCREEN - FIXED VERTICAL	FC54 : FIBRE CEMENT CLADDING WIRE	GRS : GRS	GRS : GRS		
MFSH : METAL SCREEN - FIXED HORIZONTAL	FC55 : FIBRE CEMENT CLADDING WIRE	GRS : GRS	GRS : GRS		
MFSV : METAL SCREEN - FIXED VERTICAL	FC56 : FIBRE CEMENT CLADDING WIRE	GRS : GRS	GRS : GRS		
MFSH : METAL SCREEN - FIXED HORIZONTAL	FC57 : FIBRE CEMENT CLADDING WIRE	GRS : GRS	GRS : GRS		
MFSV : METAL SCREEN - FIXED VERTICAL	FC58 : FIBRE CEMENT CLADDING WIRE	GRS : GRS	GRS : GRS		
MFSH : METAL SCREEN - FIXED HORIZONTAL	FC59 : FIBRE CEMENT CLADDING WIRE	GRS : GRS	GRS : GRS		
MFSV : METAL SCREEN - FIXED VERTICAL	FC60 : FIBRE CEMENT CLADDING WIRE	GRS : GRS	GRS : GRS		
MFSH : METAL SCREEN - FIXED HORIZONTAL	FC61 : FIBRE CEMENT CLADDING WIRE	GRS : GRS	GRS : GRS		
MFSV : METAL SCREEN - FIXED VERTICAL	FC62 : FIBRE CEMENT CLADDING WIRE	GRS : GRS	GRS : GRS		
MFSH : METAL SCREEN - FIXED HORIZONTAL	FC63 : FIBRE CEMENT CLADDING WIRE	GRS : GRS	GRS : GRS		
MFSV : METAL SCREEN - FIXED VERTICAL	FC64 : FIBRE CEMENT CLADDING WIRE	GRS : GRS	GRS : GRS		
MFSH : METAL SCREEN - FIXED HORIZONTAL	FC65 : FIBRE CEMENT CLADDING WIRE	GRS : GRS	GRS : GRS		
MFSV : METAL SCREEN - FIXED VERTICAL	FC66 : FIBRE CEMENT CLADDING WIRE	GRS : GRS	GRS : GRS		
MFSH : METAL SCREEN - FIXED HORIZONTAL	FC67 : FIBRE CEMENT CLADDING WIRE	GRS : GRS	GRS : GRS		
MFSV : METAL SCREEN - FIXED VERTICAL	FC68 : FIBRE CEMENT CLADDING WIRE	GRS : GRS	GRS : GRS		
MFSH : METAL SCREEN - FIXED HORIZONTAL	FC69 : FIBRE CEMENT CLADDING WIRE	GRS : GRS	GRS : GRS		
MFSV : METAL SCREEN - FIXED VERTICAL	FC70 : FIBRE CEMENT CLADDING WIRE	GRS : GRS	GRS : GRS		
MFSH : METAL SCREEN - FIXED HORIZONTAL	FC71 : FIBRE CEMENT CLADDING WIRE	GRS : GRS	GRS : GRS		
MFSV : METAL SCREEN - FIXED VERTICAL	FC72 : FIBRE CEMENT CLADDING WIRE	GRS : GRS	GRS : GRS		
MFSH : METAL SCREEN - FIXED HORIZONTAL	FC73 : FIBRE CEMENT CLADDING WIRE	GRS : GRS	GRS : GRS		
MFSV : METAL SCREEN - FIXED VERTICAL	FC74 : FIBRE CEMENT CLADDING WIRE	GRS : GRS	GRS : GRS		
MFSH : METAL SCREEN - FIXED HORIZONTAL	FC75 : FIBRE CEMENT CLADDING WIRE	GRS : GRS	GRS : GRS		
MFSV : METAL SCREEN - FIXED VERTICAL	FC76 : FIBRE CEMENT CLADDING WIRE	GRS : GRS	GRS : GRS		
MFSH : METAL SCREEN - FIXED HORIZONTAL	FC77 : FIBRE CEMENT CLADDING WIRE	GRS : GRS	GRS : GRS		
MFSV : METAL SCREEN - FIXED VERTICAL	FC78 : FIBRE CEMENT CLADDING WIRE	GRS : GRS	GRS : GRS		
MFSH : METAL SCREEN - FIXED HORIZONTAL	FC79 : FIBRE CEMENT CLADDING WIRE	GRS : GRS	GRS : GRS		
MFSV : METAL SCREEN - FIXED VERTICAL	FC80 : FIBRE CEMENT CLADDING WIRE	GRS : GRS	GRS : GRS		
MFSH : METAL SCREEN - FIXED HORIZONTAL	FC81 : FIBRE CEMENT CLADDING WIRE	GRS : GRS	GRS : GRS		
MFSV : METAL SCREEN - FIXED VERTICAL	FC82 : FIBRE CEMENT CLADDING WIRE	GRS : GRS	GRS : GRS		
MFSH : METAL SCREEN - FIXED HORIZONTAL	FC83 : FIBRE CEMENT CLADDING WIRE	GRS : GRS	GRS : GRS		
MFSV : METAL SCREEN - FIXED VERTICAL	FC84 : FIBRE CEMENT CLADDING WIRE	GRS : GRS	GRS : GRS		
MFSH : METAL SCREEN - FIXED HORIZONTAL	FC85 : FIBRE CEMENT CLADDING WIRE	GRS : GRS	GRS : GRS		
MFSV : METAL SCREEN - FIXED VERTICAL	FC86 : FIBRE CEMENT CLADDING WIRE	GRS : GRS	GRS : GRS		
MFSH : METAL SCREEN - FIXED HORIZONTAL	FC87 : FIBRE CEMENT CLADDING WIRE	GRS : GRS	GRS : GRS		
MFSV : METAL SCREEN - FIXED VERTICAL	FC88 : FIBRE CEMENT CLADDING WIRE	GRS : GRS	GRS : GRS		
MFSH : METAL SCREEN - FIXED HORIZONTAL	FC89 : FIBRE CEMENT CLADDING WIRE	GRS : GRS	GRS : GRS		
MFSV : METAL SCREEN - FIXED VERTICAL	FC90 : FIBRE CEMENT CLADDING WIRE	GRS : GRS	GRS : GRS		
MFSH : METAL SCREEN - FIXED HORIZONTAL	FC91 : FIBRE CEMENT CLADDING WIRE	GRS : GRS	GRS : GRS		
MFSV : METAL SCREEN - FIXED VERTICAL	FC92 : FIBRE CEMENT CLADDING WIRE	GRS : GRS	GRS : GRS		
MFSH : METAL SCREEN - FIXED HORIZONTAL	FC93 : FIBRE CEMENT CLADDING WIRE	GRS : GRS	GRS : GRS		
MFSV : METAL SCREEN - FIXED VERTICAL	FC94 : FIBRE CEMENT CLADDING WIRE	GRS : GRS	GRS : GRS		
MFSH : METAL SCREEN - FIXED HORIZONTAL	FC95 : FIBRE CEMENT CLADDING WIRE	GRS : GRS	GRS : GRS		
MFSV : METAL SCREEN - FIXED VERTICAL	FC96 : FIBRE CEMENT CLADDING WIRE	GRS : GRS	GRS : GRS		
MFSH : METAL SCREEN - FIXED HORIZONTAL	FC97 : FIBRE CEMENT CLADDING WIRE	GRS : GRS	GRS : GRS		
MFSV : METAL SCREEN - FIXED VERTICAL	FC98 : FIBRE CEMENT CLADDING WIRE	GRS : GRS	GRS : GRS		
MFSH : METAL SCREEN - FIXED HORIZONTAL	FC99 : FIBRE CEMENT CLADDING WIRE	GRS : GRS	GRS : GRS		
MFSV : METAL SCREEN - FIXED VERTICAL	FC100 : FIBRE CEMENT CLADDING WIRE	GRS : GRS	GRS : GRS		



Rev Description	By	Date	Rev Description	By	Date
01 PREFERRED PROJECT	RB	12-12-11			
<p>© COPYRIGHT COX ARCHITECTURE PTY LTD 2011. ALL RIGHTS RESERVED. THE CONTENTS OF THIS DOCUMENT ARE THE PROPERTY OF COX ARCHITECTURE PTY LTD. PERMISSION IS GRANTED TO CONSULTANTS AND PARTNERSHIP OF COX ARCHITECTURE PTY LTD TO COMMUNICATE AND MANAGE THE PROJECT.</p>					
<p>Consultants</p> <p>Project Manager: FRASERS PROPERTY</p> <p>BCA Consultant: JBA PLANNING</p> <p>Planning Consultant: MAG CONSULTING</p> <p>Structural: MENHARDT ENGINEERING</p> <p>Civil: ACCESS CONSULTING</p> <p>Building Services: ENVIRONMENTAL PARTNERSHIP</p> <p>Landscape: LHM SURVEY</p>			<p>Consultants</p> <p>Heritage Consultant: COX RICHARDSON</p> <p>Acoustic: COX RICHARDSON</p> <p>Environmental: COX RICHARDSON</p> <p>Traffic Consultant: COX RICHARDSON</p> <p>Access Consultant: COX RICHARDSON</p> <p>Cost Planner: COX RICHARDSON</p> <p>WT PARTNERSHIP: COX RICHARDSON</p>		
<p>Cox Richardson</p> <p>Level 2, 201 Clarence Street, Sydney 2000 Australia</p> <p>Phone: +61 (0)2 9239 5000</p> <p>Email: sydney@cox.com.au</p>					
<p>FRASERS PUTNEY</p>					
<p>HOUSING TYPE 56</p> <p>Drawing Number: A-P-A-FP-H5G</p> <p>Revision: 01</p> <p>Scale: 1:100@A1</p> <p>Issued for: PA</p> <p>Date: 2011-12-12</p> <p>Drawn: RB</p>					
<p>North</p>					
<p>Cox Architecture Pty Ltd ACN 002 535 891</p>					